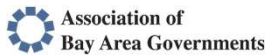


ABAG POWER Executive Committee Meeting

Thursday, June 15, 2023

Ryan Jacoby
Program Manager



1

Monthly Summary of Operations

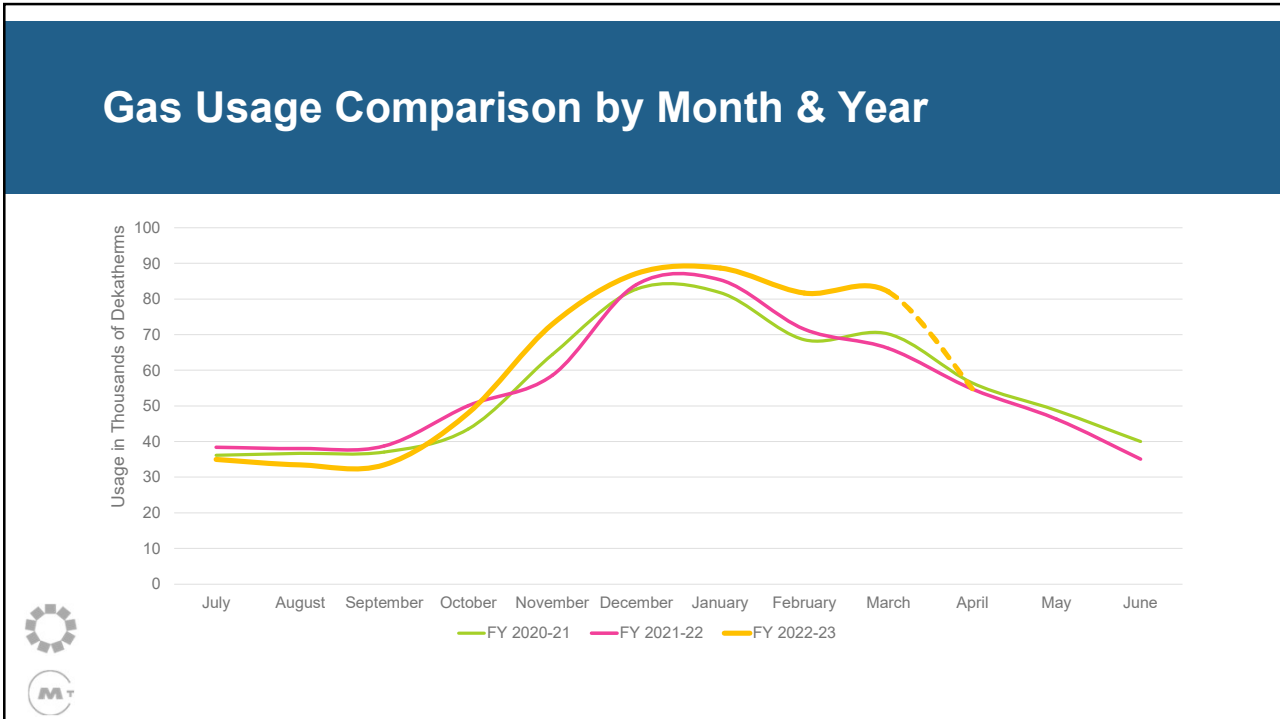
- Preliminary (unaudited) financial statements indicate the following fiscal year cumulative rates relative to PG&E's rate schedules:

	November '22	→ December '22	→ April '23
➤ Small Commercial:	+2.0%	+19.6%	+16.3%
➤ Large Commercial:	+4.7%	+22.5%	+19.0%
➤ Residential:	-1.8%	+17.7%	+1.8%
➤ Natural Gas Vehicle:	-0.4%	+19.6%	+0.9%

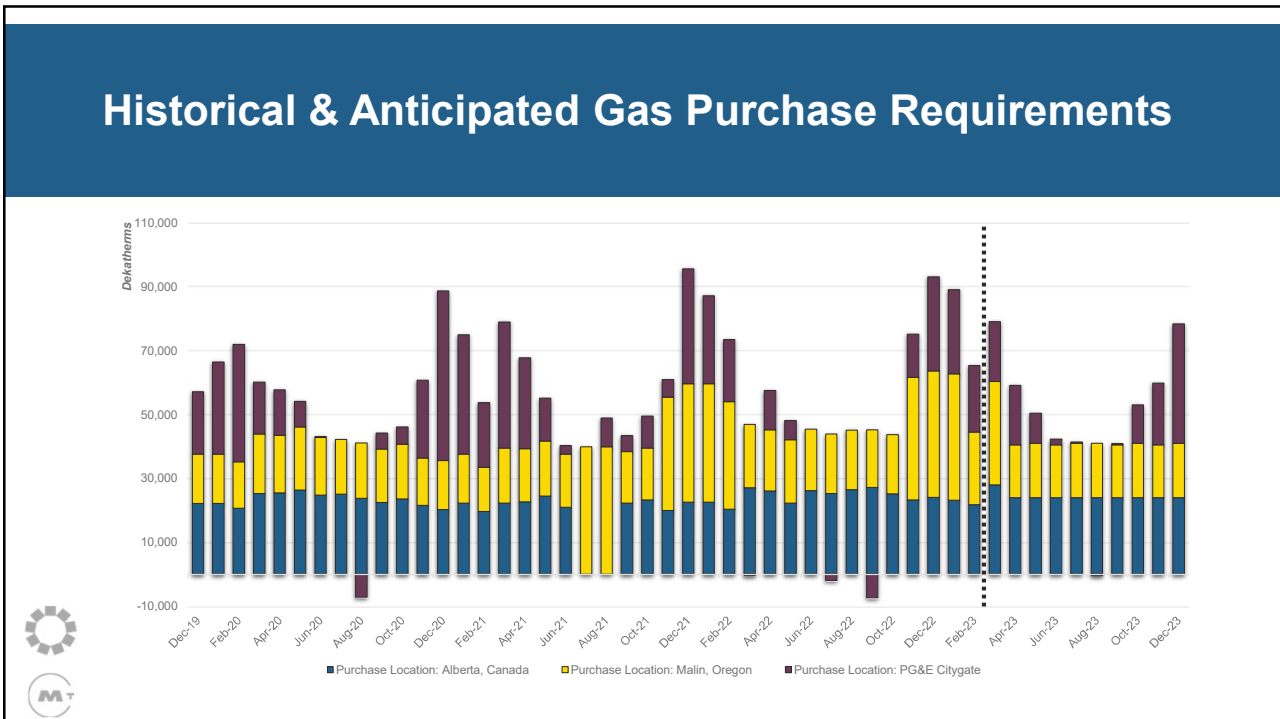
- Since winter pricing peaks, market pressure has declined resulted in pricing within the \$3-5 per dekatherm (close to historical averages).



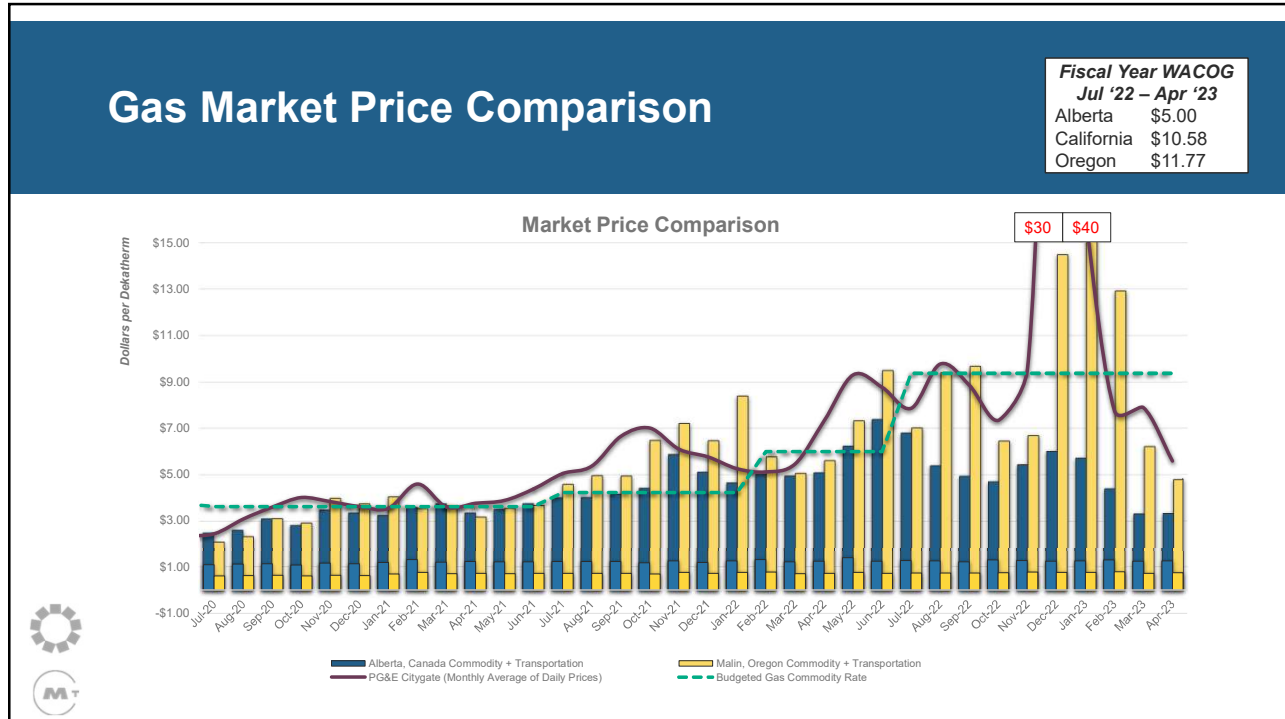
2



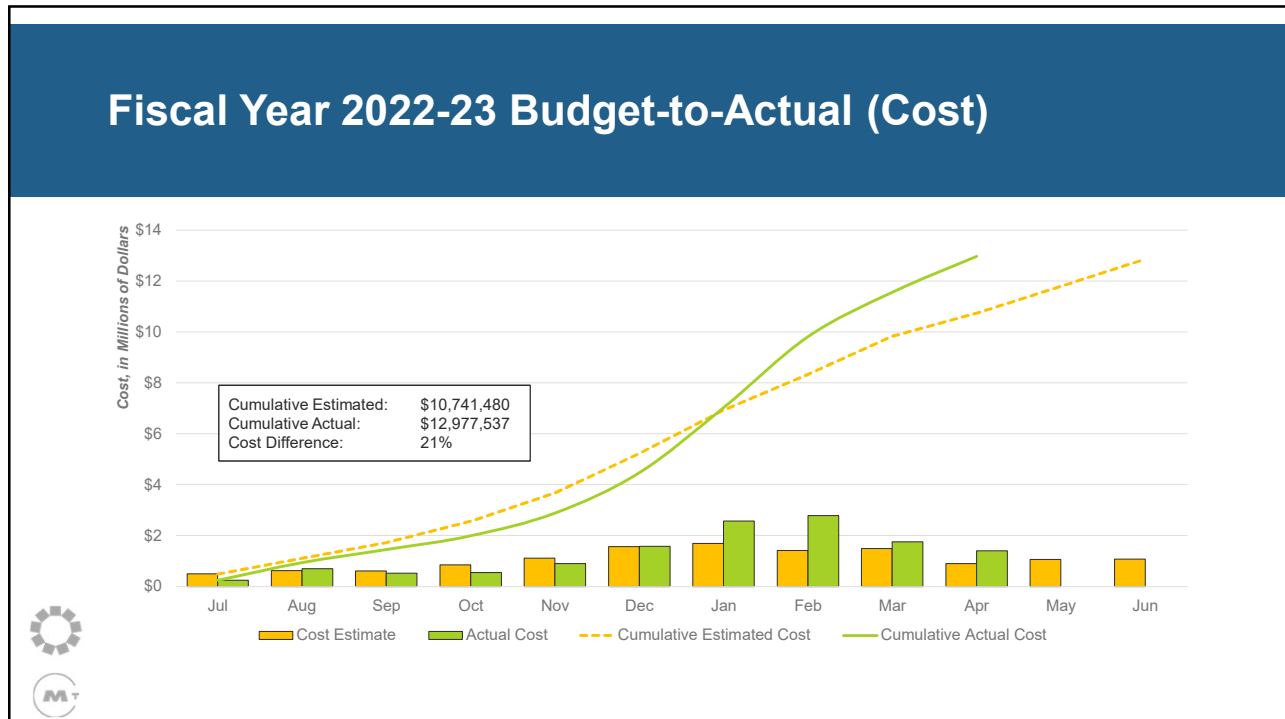
3



4



5



6

Fiscal Year 2022-23 Budget-to-Actual (Cost Cont'd)

	YTD Actual As of 04/30/23	Adopted Budget FY 2022-23	Budget Utilization
Revenue	10,731,089	12,869,639	83%
Expense			
Cost of Energy	12,465,188	11,984,226	104%
Staff, Consultant, and Other Expenses	512,350	882,082	58%
Surplus / (Deficit)	(2,246,449)	3,331	-

