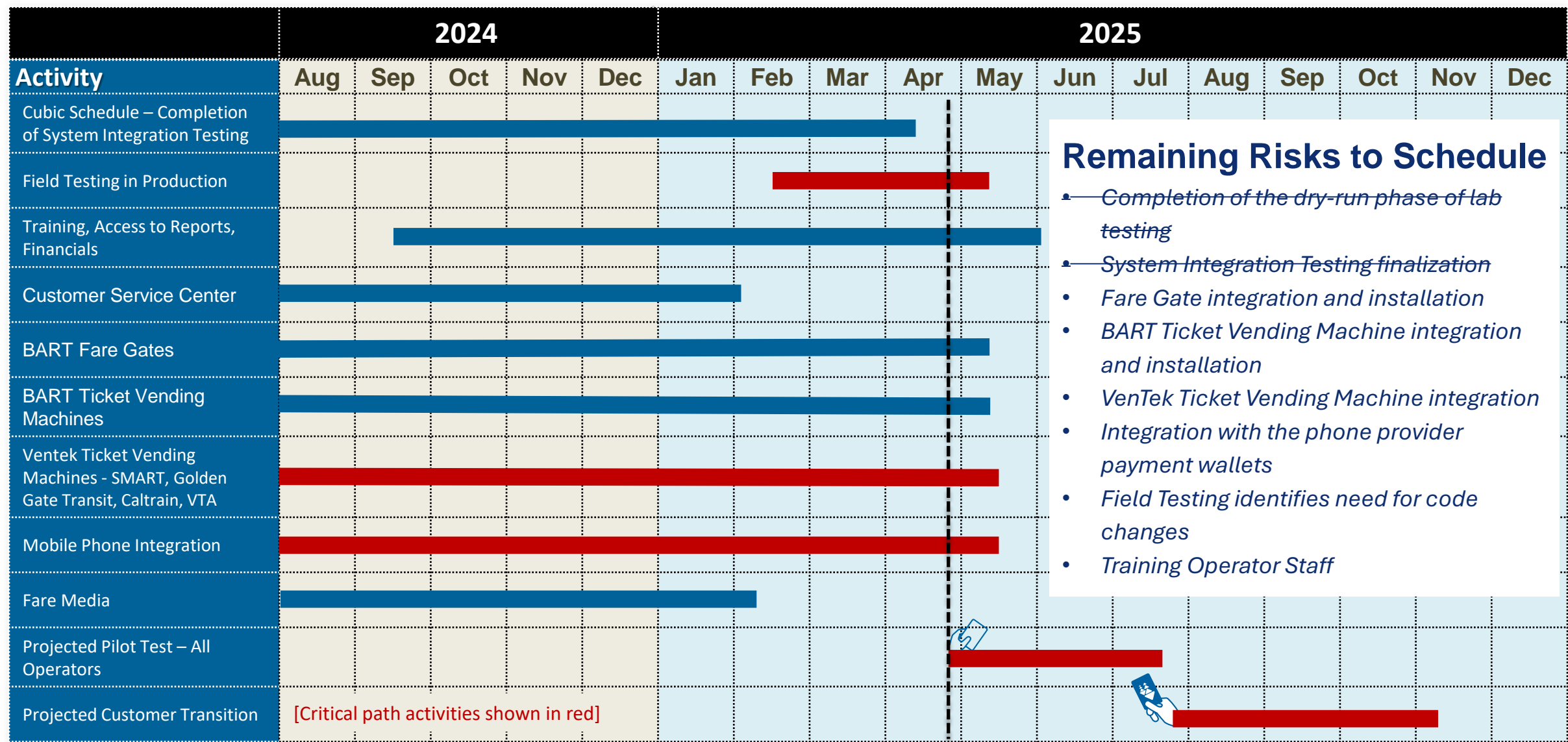




Clipper® Next Generation Schedule

Clipper Executive Board
June 2, 2025


Schedule, Remaining Risks & Critical Path – from CEB on April 28, 2025



Progress since April 28, 2025, CEB meeting

- **Field testing:**
 - Started testing fare card orders/fulfillment, discount card applications, and retail devices
 - Continued testing fare validators, inspection devices, fare media, website, and mobile app
- **Training:**
 - Operator training sessions held for inspection devices
 - Training materials being finalized for upcoming sessions
- **BART validators:**
 - Fare gate installations nearly complete
 - Ticket Vending Machine testing and installations continue
- **Muni fare gate validators:**
 - Installation completed
- **VenTek TVMs:**
 - Mechanical testing of fare media complete
 - Software configuration and testing progressing
- **Mobile integration:**
 - Mobile card field testing continues
 - Migration functionality ready for deployment for field testing

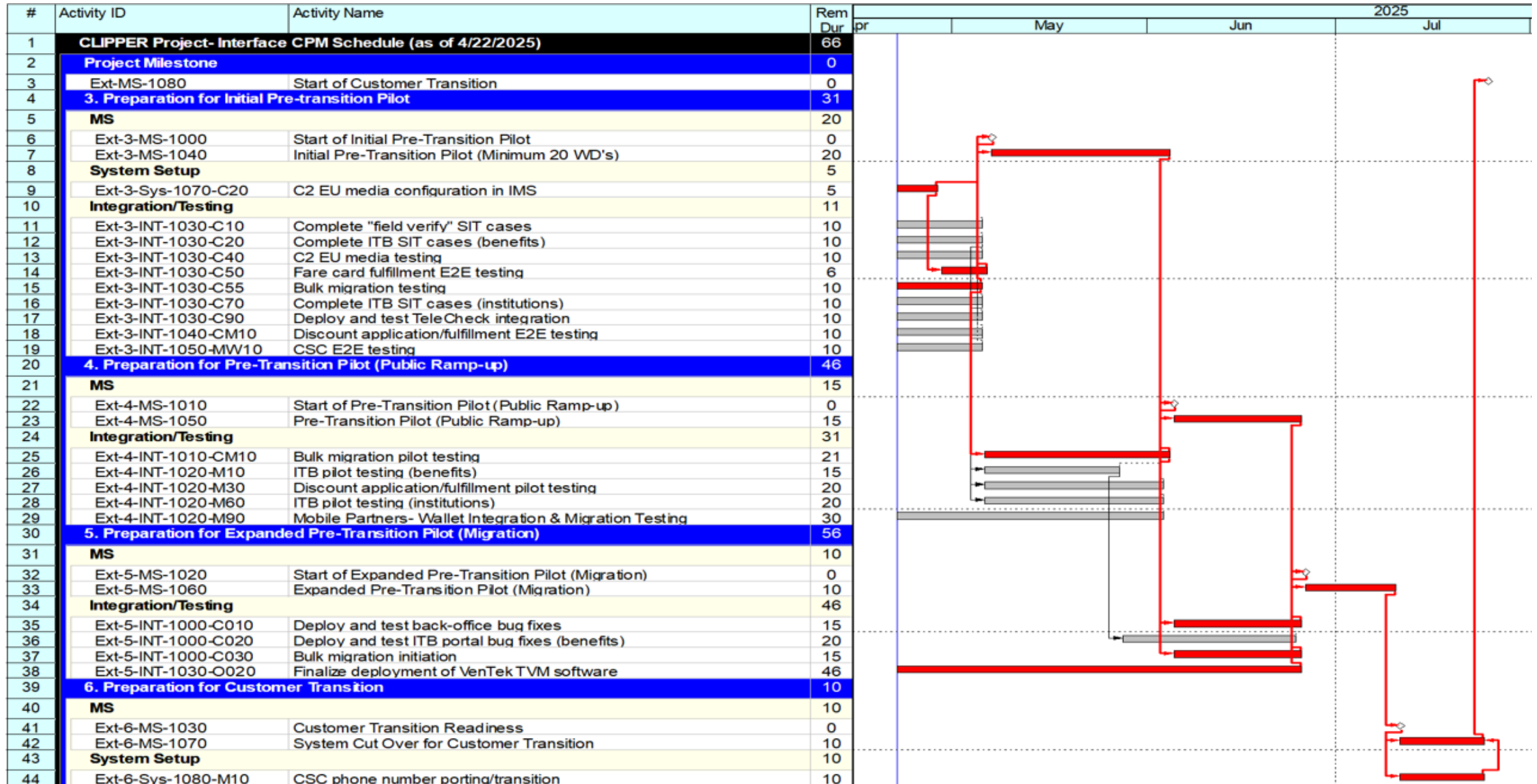
Remaining Risks to Schedule

- ~~Completion of the dry-run phase of lab testing~~
- ~~System Integration Testing finalization~~
- ~~Fare Gate integration and installation~~
- BART Ticket Vending Machine integration and installation
- VenTek Ticket Vending Machine integration
- Integration with the phone provider payment wallets
- Field Testing identifies need for code changes
- ~~Training Operator Staff~~
-  Removed since last CEB

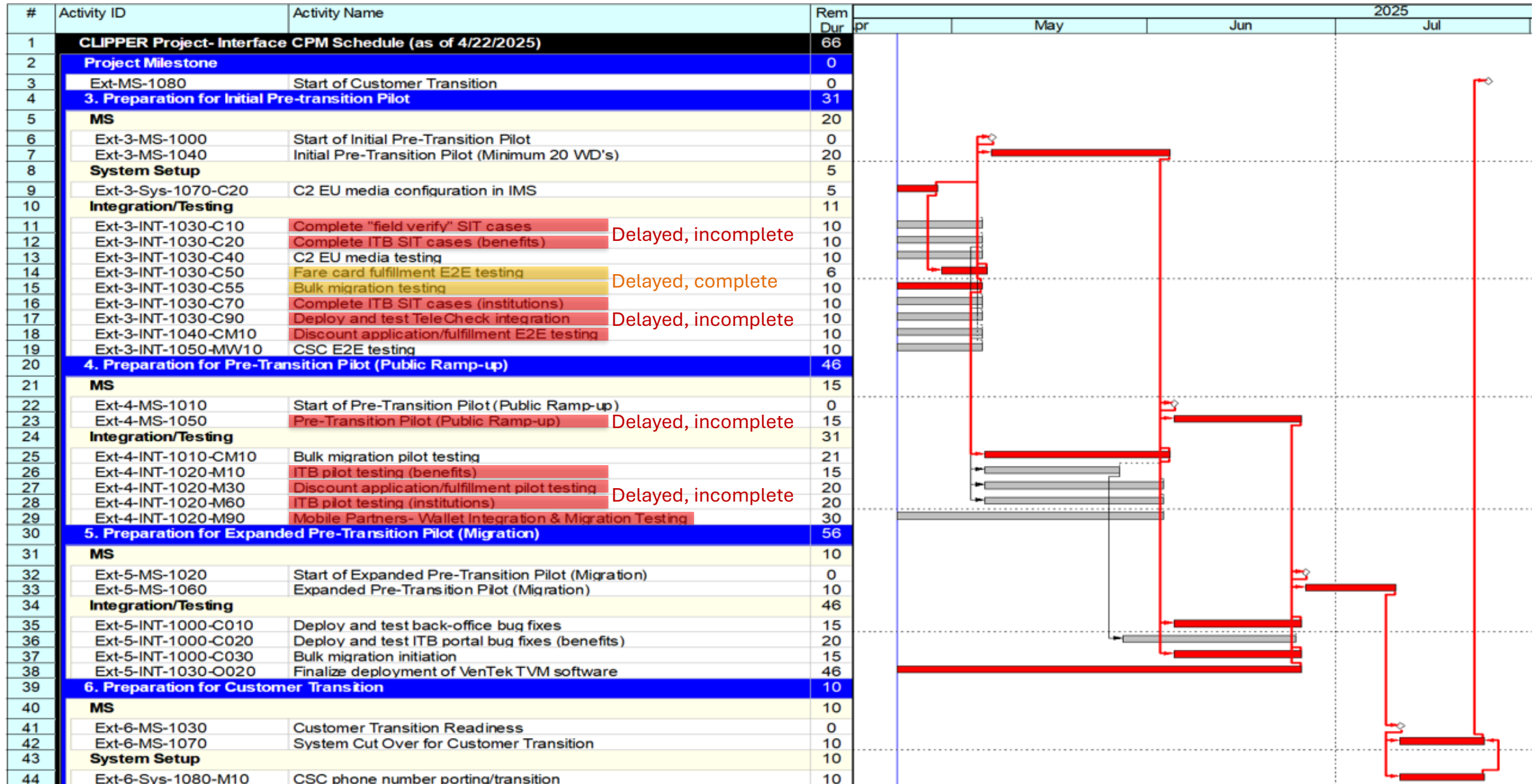
Testing & Pilot Activities

- All SFMTA faregates have next-generation Clipper readers installed, and are fully integrated with the new system
- BART has received sufficient inventory to complete all next-generation Clipper reader installations in their faregates, and faregate retrofits are nearly complete system-wide
- Updates to key training materials have been resubmitted to MTC for review, and training is progressing
- Account migration, card order fulfillment, and other critical workflows are being validated in production as part of the Pilot

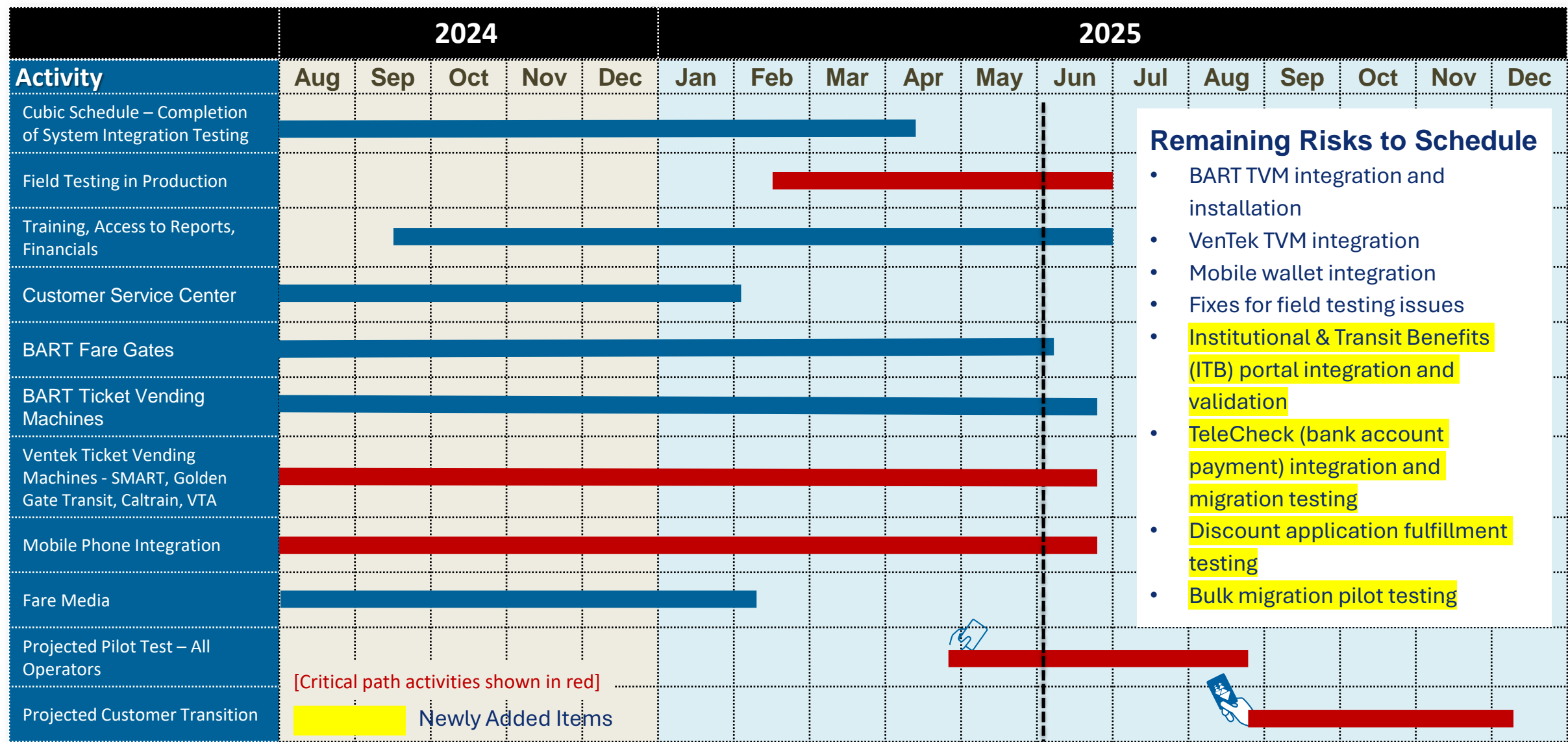
Critical Path with Additional Detail – from CEB on April 28, 2025



Critical Path with Additional Detail – from CEB on April 28, 2025



Schedule & Remaining Risks/Critical Activities – as of June 2, 2025



Critical Path with Additional Detail – as of June 2, 2025

