

Community Action Resource and Empowerment (CARE) Program

- Power Building & Engagement (Pb+E)
- Project Development Technical Assistance for CBTP Projects (CBTP TA)
- Participatory Budgeting and Implementation (PBI)

MTC ABAG Community Advisory Council
April 3, 2027

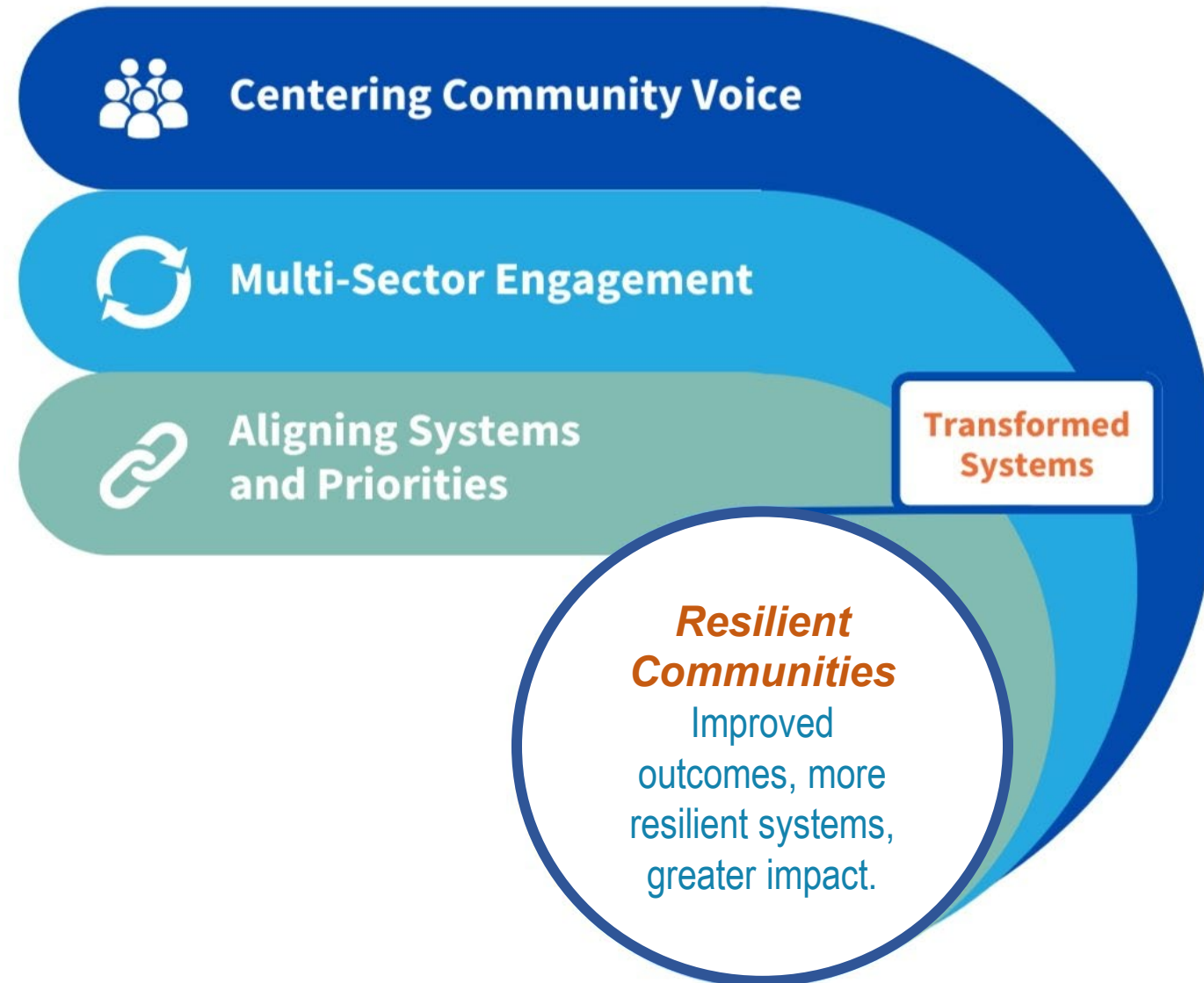


ASSOCIATION OF BAY AREA GOVERNMENTS
METROPOLITAN TRANSPORTATION COMMISSION



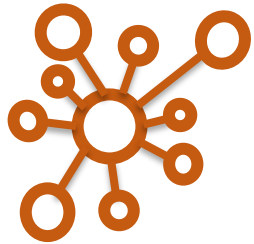
CARE Approach

- CARE is advancing a shift in how transit/transportation systems, community organizations, residents and multiple sectors collaborate to improve mobility, climate, and housing.



Evolution of Program's Equity Framework

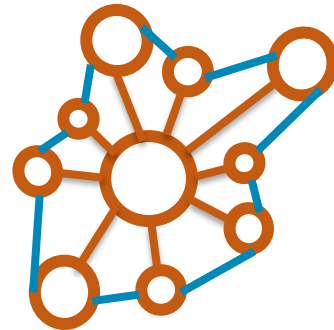
LIFELINE 1.0



Funding model of sites

2001 - 2017

LIFELINE 2.0



Expanding
regionwide and
deepening learning
across the network

2018 - 2022

CARE



Unifying and
mobilizing the
network with a
collective identity and
shared purpose for
transit/transportation/
housing/climate
systems
transformation

2023 - Present

CARE Program & Components

CARE is a funding and implementation program that centers community voices, strengthens community and multi-sector partnerships, and supports community-led solutions that improve livability for all people in the Bay Area, comprised of three key components:



Community Power-Building and Engagement (Pb+E)

- **Total Funding:** \$5 million
- **Objective:** Provide technical assistance and capacity building for/from/with community-based organizations and local government.
- **Timeline:** Fall 2025 – Winter 2026



Project Development Technical Assistance for CBTP Projects (CBTP TA)

- **Total Funding:** \$12 million
- **Objective:** Advance CBTP concepts to construction-ready projects.
- **Timeline:** Early 2026 – Winter 2026



Participatory Budgeting and Implementation (PBI)

- **Total Funding:** \$12.4M est.*
- **Objective:** Implement high-priority neighborhood projects from Participatory Budgeting processes or similar.
- **Timeline:** Adopt program guidelines May 2026

**Dependent on final OBAG 4 program funding level and future programming actions.*

Power-building + Engagement (Pb+E) Overview

GOALS:

- Build Community Leadership and Capacity-building in Transportation and Housing
- Facilitate Inclusive Multi-Sector Partnerships and Collaboration Development
- Implement Resilient Community Solutions

STRATEGY:

- Grant Program
- Wrap-Around Support: Technical Assistance, Peer Learning, Cohort Convenings, Expert Coaching
- Learning Action Lab Fellowship

Underlying Need: In order to reach their maximum impact, under-resourced Community-Based Organizations require a mix of capacity building, learning opportunities, and dedicated funding sources, but existing funding opportunities are highly limited.

Program Objective: The **Pb+E** program component engages diverse community groups from across the Bay Area to strengthen community capacity and engagement as well as foster partnerships and networks to amplify community voices. Building Trust.

Pb+E Delivery Framework

- Round 1: \$1.5M was awarded to 16 projects in November 2025.
- Round 2: Due to high demand, an additional \$1M was awarded to 10 projects in January 2026.

Category (Pb+E)	Number of Projects	Amount
Capacity Building	11	\$550,000
Multi-Sector Partnerships	7	\$700,000
Community Projects	8	\$1,250,000
TOTAL	26	\$2,500,000

- Details regarding the Learning Action Lab Fellowship program will be announced Spring 2026.

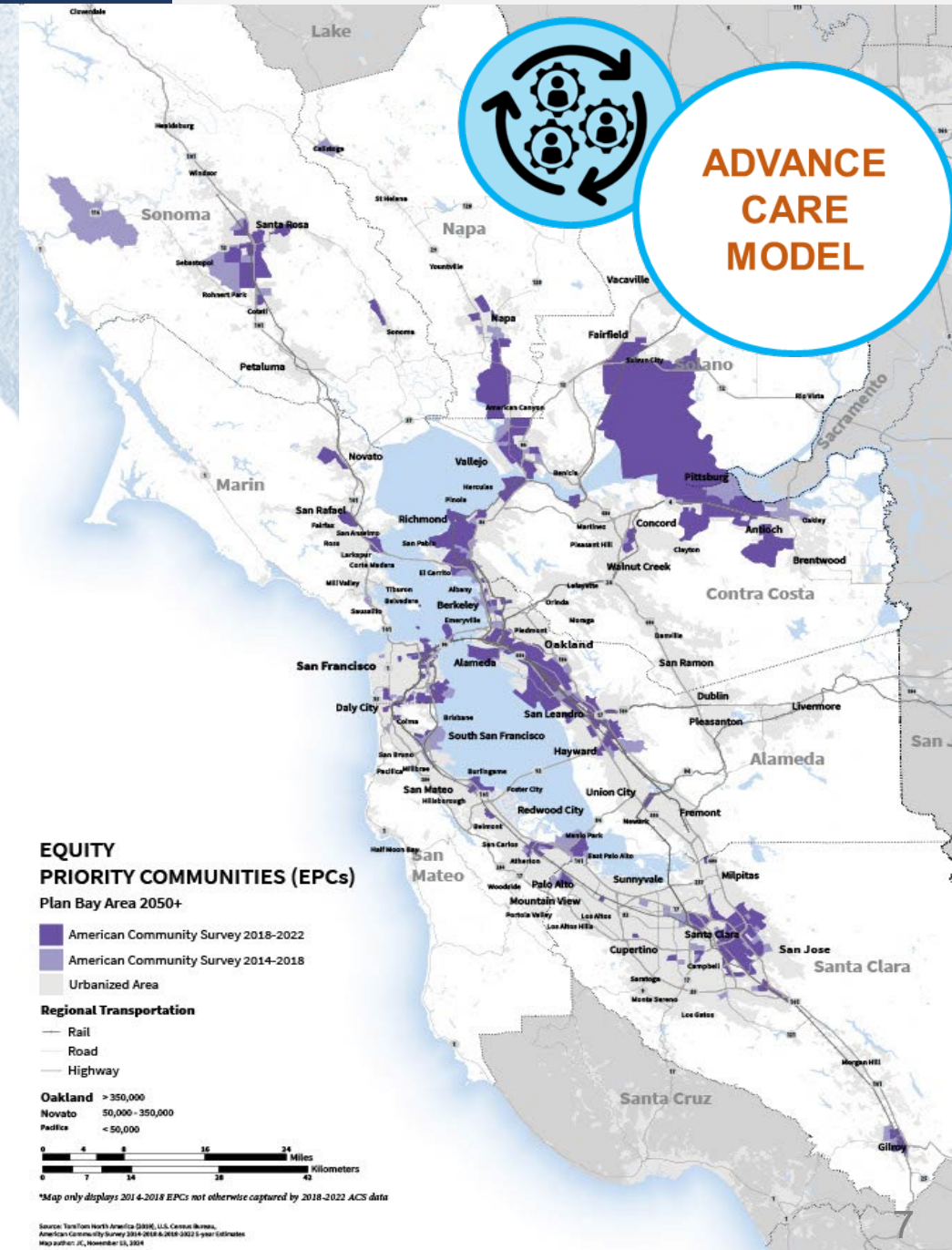


CBTP TA Overview

- Established in 2002, the Community-Based Transportation Planning (CBTP) Program has funded transportation plans in over 40 communities across the nine Bay Area counties.
- Funds planning in MTC-designated Equity Priority Communities (EPCs).
- Identifies projects/programs that improve access and mobility for residents of EPCs.
- Funded by MTC; Administered by County Transportation Authorities (CTAs).

Underlying Need: MTC has made funding available for CBTP planning, but funding to turn community priorities from concepts to ready-to-implement projects is scarce.

Program Objective: The **CBTP TA** program component supports delivery of community-identified projects by funding development studies, environmental analysis, and other required pre-construction activities.



CBTP TA Program Delivery Framework

- **Approach:** Deliver CBTP TA through a streamlined process that advances high-priority community projects.
- **Funding:** \$12M in non-federal funds.
- **Eligibility:** Projects should have benefits to underserved communities and must demonstrate meaningful community support. Sponsors will have flexible pathways to demonstrate support.
- **Status:** Guidelines were adopted in February 2026, and project nominations are due to MTC from CTAs Fall 2026. Awards are anticipated Early 2027.

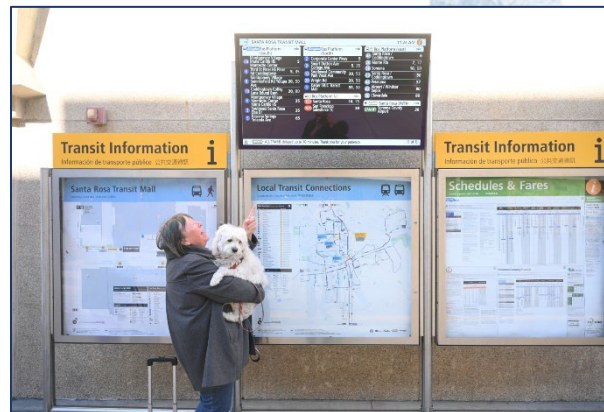
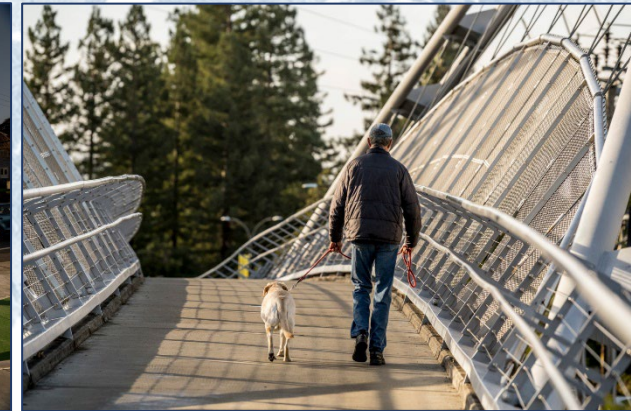
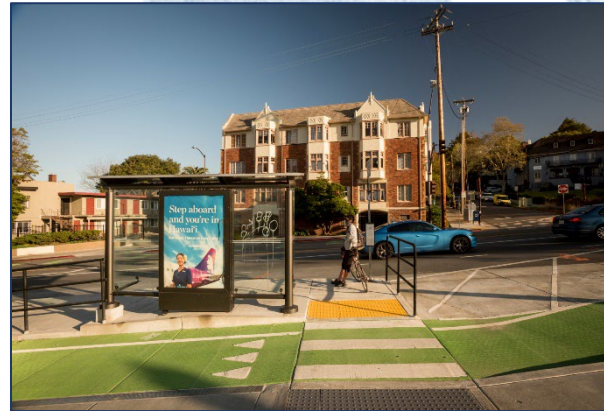
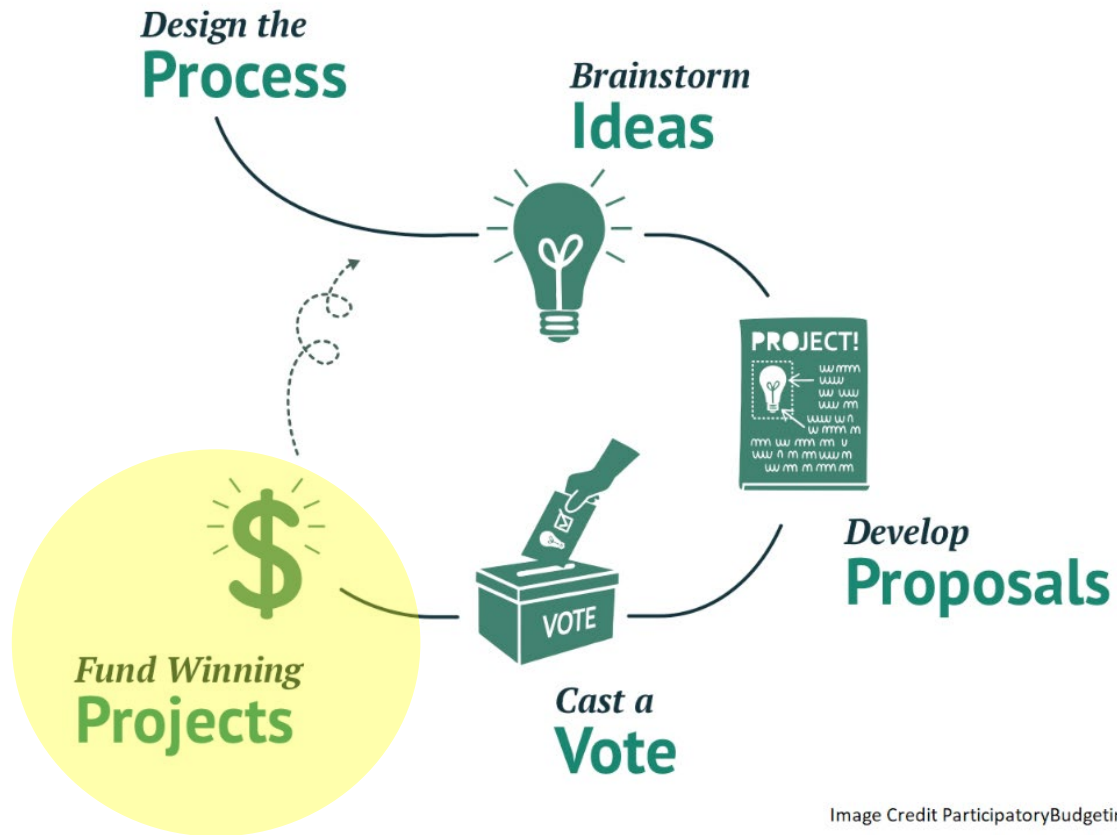


Photo Credit: Karl Nielsen; Noah Berger

Participatory Budgeting and Implementation Overview



- **Background**
 - PB is a formal community-driven process where residents and community champions help spend part of a public budget by developing and voting for project ideas to benefit their community.

Underlying Need: There is a need for dedicated funding to support implementation of high priority, community driven projects.

Program Objective: Through **PBI**, funds are available to construct projects that have been prioritized through a robust community-driven process or support further participatory budgeting processes.

Participatory Budgeting Pilot

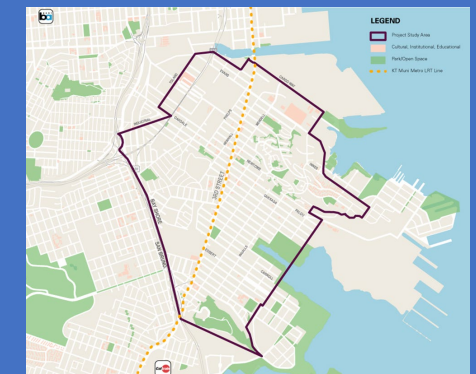
- MTC launched a pilot program for Participatory Budgeting in 2018 with a \$1,000,000 set-aside from its Lifeline Transportation Program
- The pilot program was developed with the goal of democratizing transportation planning and investment for the Bay Area's most marginalized communities
- **Bayview:** \$750,000 (\$150,000 local match) funded 7 high-priority projects that were developed by residents and voted on in a public ballot in July 2019
- **Vallejo:** \$400,000 funded 6 projects identified through a community voting process - four transit capital projects and two pedestrian projects that will improve safety and access to transit

The CARE PBI component will build upon successful 2018 pilots in Solano and San Francisco Counties

Solano Transportation Authority
Vallejo Community Based Transportation Plan



San Francisco County Transportation Authority/
San Francisco MTA
Bayview Community Based Transportation Plan



PBI Program Delivery Framework

- **Approach:** Develop a PBI framework that provides implementation funding to high-priority neighborhood projects, encourages robust engagement and participatory budgeting processes, and allows for flexibility in timeline to utilize funds in the most impactful way.
- **Funding:** Staff anticipate funding of approximately \$12.4 million contingent on future programming actions.
- **Eligibility (implementation funding):** Capital transportation improvement, located in an EPC, and have demonstrated meaningful community support.
- **Status:** Staff plans to propose revisions to the CARE Program (MTC Resolution No. 4604, Revised) in May 2026 to include programming levels and guidelines.



Next Steps: PBI

- **Engagement:**
 - Seeking feedback from CTAs, PB pilot project teams, community-based organizations (CBOs), and community members.
 - Incorporate feedback into guideline development
 - Adoption of guidelines in May 2026
 - Implementation: Fall/Winter 2026 onward
- **Questions for the Council:**
 - To receive PBI funds, sponsors must show that their project is a true community priority, through authentic and meaningful engagement. What does demonstrating authentic and meaningful engagement mean to you?
 - What types of projects are important to prioritize for implementation funding (limited to capital transportation projects)?
 - What are potential measures of success or outcomes for the PBI?