



PLAN BAY AREA 2050 +



ASSOCIATION OF BAY AREA GOVERNMENTS
METROPOLITAN TRANSPORTATION COMMISSION

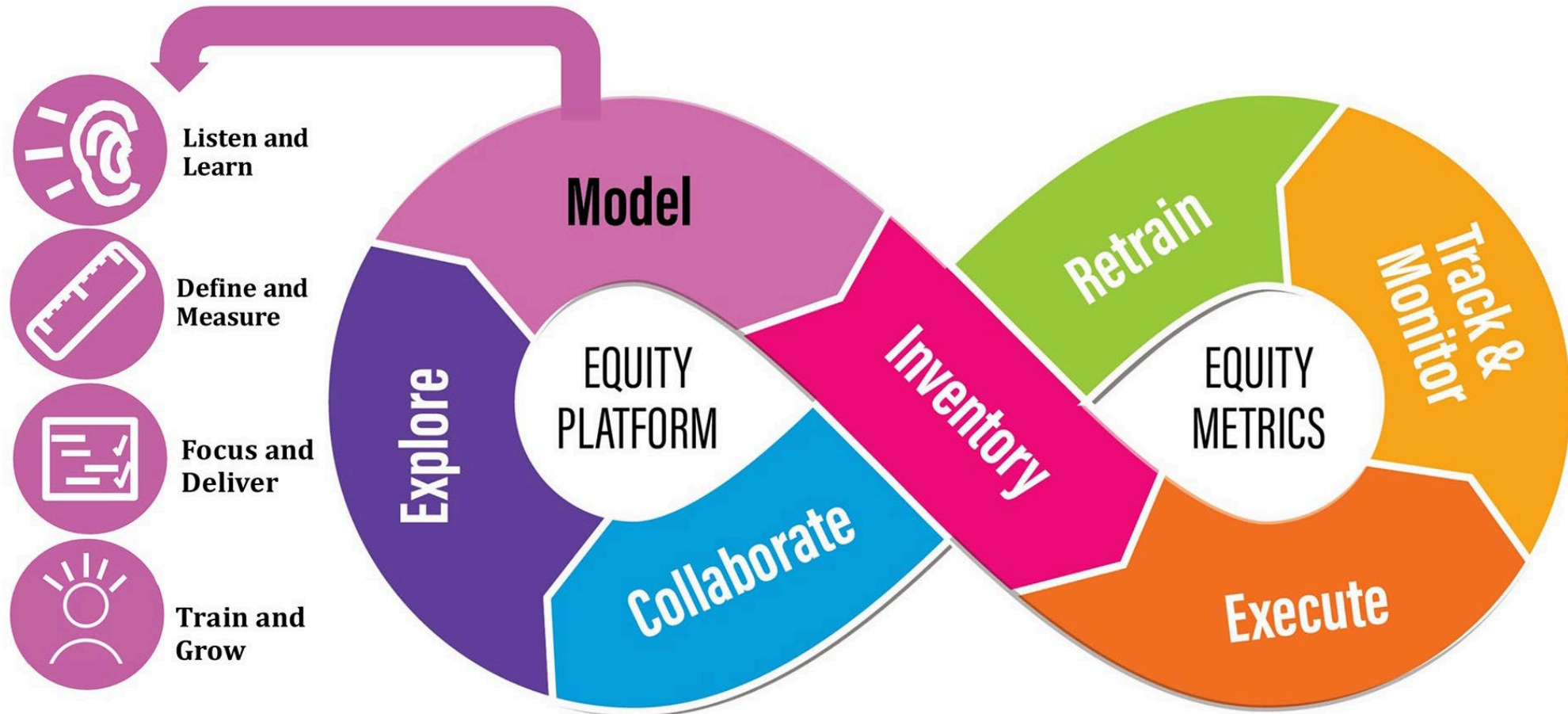
Equity Priority Communities (EPCs): 2024 EPCs and Re-Envisioning for the Future

MTC Planning Committee and ABAG Administrative Committee

December 13, 2024

MTC/ABAG Equity Platform

Adopted in January 2023, the Equity Platform is a framework for systems change to advance more fair and just outcomes. The Platform is meant to inform and address barriers to equity present in complex systems and environments.



Examples: Ongoing Equity Focus in MTC/ABAG Initiatives



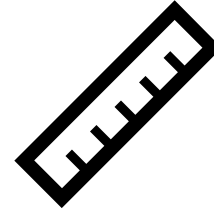
Listen and Learn

- Plan Bay Area 2050+ Outreach and Engagement
- Bay Trail Equity Strategy
- Estuary Blueprint (San Francisco Estuary Partnership)
- Policy Advisory Equity and Access Subcommittee



Define and Measure

- Equity Priority Communities Framework
- Plan Bay Area Performance and Equity Analysis
- Vital Signs
- BAHFA Business Plan and Equity Framework



Focus and Deliver

- Clipper and Express Lane START Programs
- Clipper BayPass Pilot Program
- Community Action Resource & Empowerment (CARE) Program (*formally Lifeline Transportation Program*)



Train and Grow

- Disadvantaged Business Enterprise (DBE) and Small Business Enterprise (SBE) Annual Outreach Plan
- Agency-wide Diversity, Equity, and Inclusion Training

Refresher: What are EPCs?

- MTC/ABAG has used census data to create and update EPCs since their inception in 1999.
- EPCs are census tracts that have a significant concentration of disadvantage “factors.”
- “Thresholds” are created to determine statistically significant concentrations for each “factor.”
- How does a tract qualify to be an EPC today¹?
 1. Meets thresholds for both people of color and low-income households
 2. Meets thresholds for both low-income households and three of any of the remaining six factors

MTC Equity Priority Community Disadvantage Factors

Low Income

People Of
Color

People With
Disabilities

Limited
English
Proficiency

Zero-Vehicle
Household

Seniors 75
Years and
Over

Single-Parent
Family

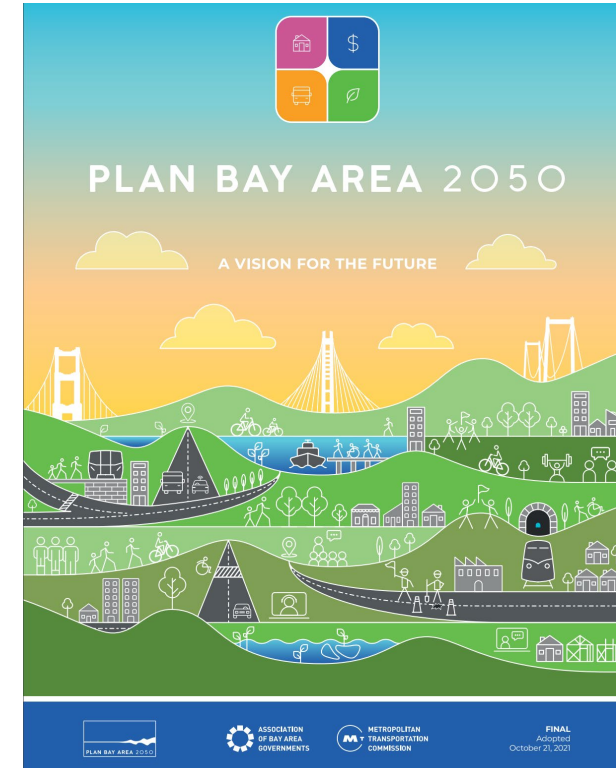
Severely Rent-
Burdened
Household

¹ The existing methodology was adopted in 2016 via MTC Resolution No. 4217 and developed in collaboration with MTC's Regional Equity Working Group; it has been used for each Plan Bay Area cycle since.

Background: EPCs and Plan Bay Area

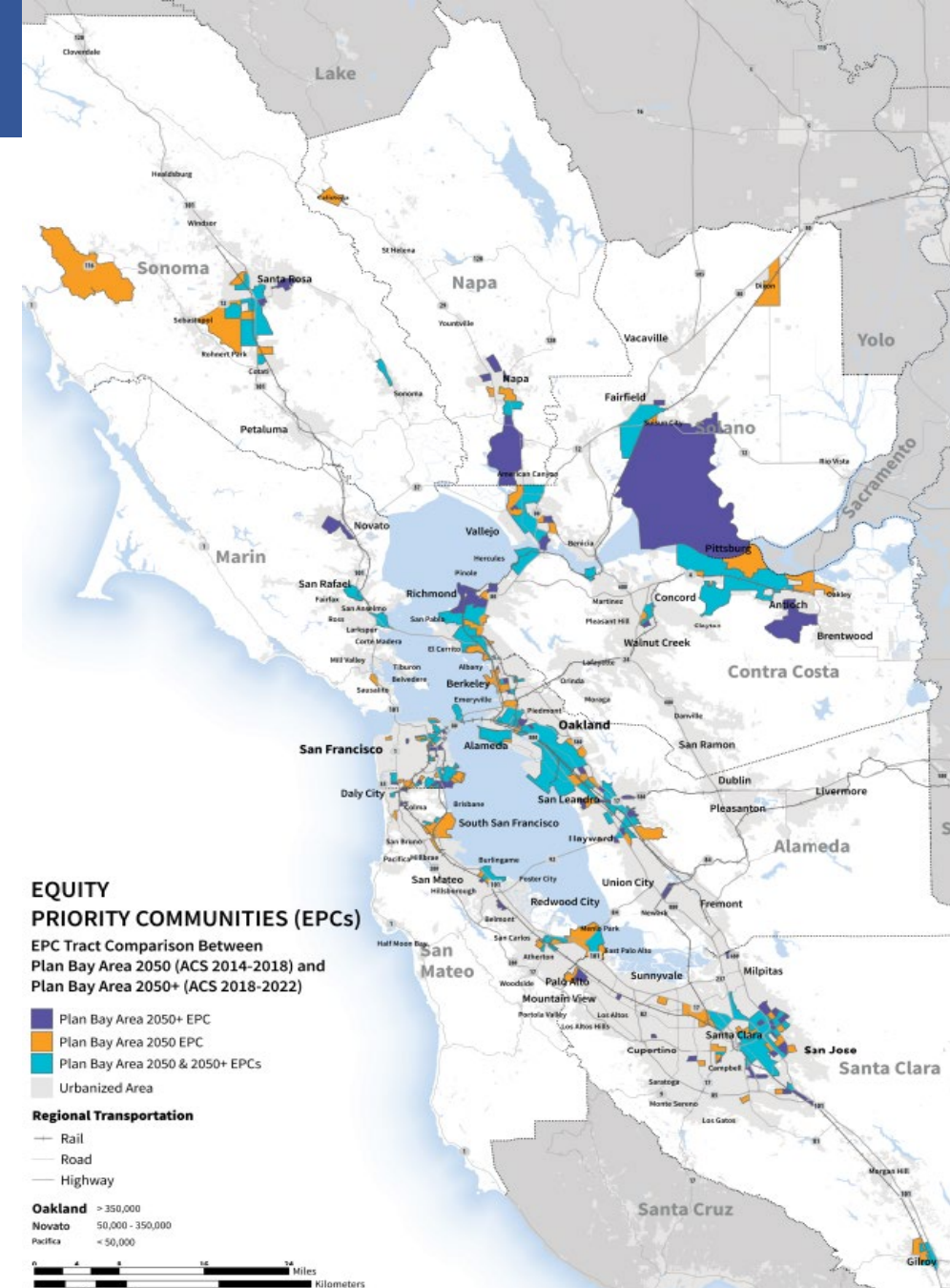
The equity framework for Plan Bay Area has three components:

- A federally-required ***Title VI*** analysis of transportation investments to assess disparate impacts on populations of different race, color or national origin;
- A federally required ***environmental justice*** analysis of transportation investments to assess disproportionate impacts on low-income and minority populations or communities of concern; and
- A supplemental ***equity analysis*** that assesses the distribution of benefits and burdens on communities of concern in comparison to the rest of the region.
- **Note:** Federal and state planning requirements specify that MPOs should use the latest data and assumptions when developing long-range plans.



Background: Draft 2024 EPC Update

- MTC/ABAG released draft 2024 EPCs in spring 2024 for public review and comment.
- The methodology to determine whether a census tract is an EPC remained the same; however, new data from the U.S. Census Bureau was integrated.
- Roughly 1 in 5 census tracts were identified as an EPC – similar to past cycles.
- The total number of EPC tracts in the region increased slightly, primarily as a result of a greater number of total tracts in the Bay Area following the 2020 Census.
- While the majority of EPCs were the same as prior cycles, demographic changes during and after the pandemic resulted in new EPC tracts as well as some tracts losing EPC status on the draft EPC map.



*Initial Draft 2024 EPC Update Map- Spring Release

Staff Outreach and Stakeholder Feedback

Round One: Formal Comment Period

- MTC/ABAG staff gathered comments from April 15 to May 15, 2024.
- Feedback was centered around data validity questions as well as concerns regarding planning and funding implications.

Staff Explorations:

In response to round one comments, staff:

- Analyzed US Census accuracy and margin of error to address concerns over data validity;
- Explored standard deviation adjustments to evaluate threshold cases;
- Reviewed alternative data sources; and
- Evaluated internal funding programs and their relationships to Equity Priority Communities.

Round Two: Continued Outreach

- Staff conducted a second round of engagement and outreach in the fall, presenting initial findings and recommendations to:
 - County Transportation Agencies (CTAs)
 - MTC Policy Advisory Council
- Stakeholders continued to express concerns regarding planning and funding implications for census tracts no longer identified as EPCs using the latest ACS data.
- Partners continued recommending that staff incorporate Plan Bay Area 2050 EPCs in the final Plan Bay Area 2050+ EPC map, in addition to maintaining newly identified EPCs.

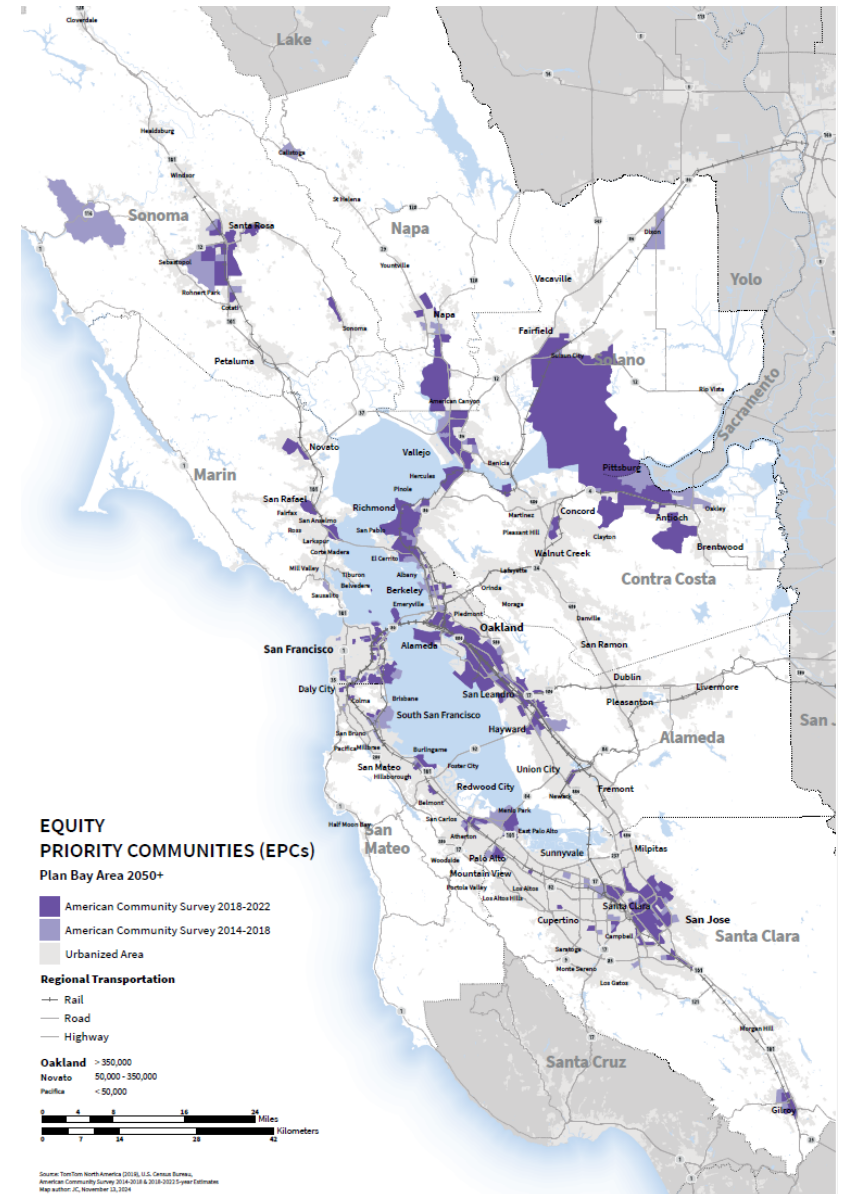
Recommendation: Final 2024 EPC Update

Final Staff Recommendation:

- Incorporate EPCs identified with 2014-2018 ACS data as well as EPCs identified with 2018-2022 ACS data into a **single consolidated map** of Plan Bay Area 2050+ Equity Priority Communities
- Plan Bay Area 2050+ will analyze **both data vintages** as part of Plan Bay Area 2050+ equity and performance analyses

Staff believe this approach will:

- Address partner/stakeholder concerns
- Meet federally required Title VI and Environmental Justice Analysis requirements
- Maintain the existing, board-approved methodology



See Attachment B for a detailed view of the Plan Bay Area 2050+ EPC map. Map only displays 2014-2018 EPCs not otherwise captured by 2018-2022 ACS data.

EPC Re-Envisioning: Goals

- In early 2025, MTC will kick off a multi-year effort to re-envision the EPC framework.
- This effort will comprehensively and collaboratively investigate many of the concern areas raised by partners, including:
 - Working with historically underserved communities to better identify needs and values.
 - Investigating and addressing concerns with the existing framework and methodology.

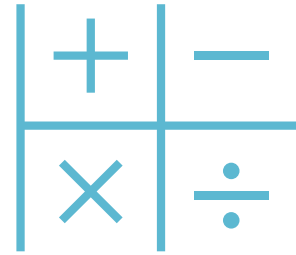
Goals and Approach:

Equity-Centered Community Design



- Engage diverse stakeholders
- Learn from historical impacts
- Identify gaps and opportunities

Updated Methodology



- Explore new opportunities for disaggregation and intersectionality
- Incorporate the Bay Area's unique local context
- Utilize latest research

Modernized Data Tool



- Develop a user-friendly interface
- Enhance public communications and information

EPC Re-Envisioning: Focus Areas & Next Steps

The EPC Re-Envisioning effort will help explore how the framework can better integrate topics such as:

The needs of people with disabilities

Gentrification and displacement

Definitions of "low-income"

The limitations of a place-based framework

Alternative data sources and types

Youth and student populations

Early 2025

Plan Bay Area 2050+ Final Blueprint approval & subsequent Equity Analysis with Plan Bay Area 2050+ EPCs



2025-2026

EPC Re-Envisioning

What does this mean for existing EPCs?

- Plan Bay Area 2050 EPCs will remain in place until the next plan (Plan Bay Area 2050+) is adopted.
- Plan Bay Area 2050+ EPCs will take effect in late 2025 until potentially late 2029, *pending the outcome and adoption of the EPC Re-Envisioning.*



Questions?

Contact Information:

Natasha Opfell – Email: nopfell@bayareametro.gov

Associate Planner/Analyst

Joshua Croff – Email: jcroff@bayareametro.gov

GIS Planner/Analyst

Thomas Arndt – Email: tarndt@bayareametro.gov

Associate Planner/Analyst