

# Regional Measure 3 Capital Program Semi-Annual Update



**METROPOLITAN  
TRANSPORTATION  
COMMISSION**

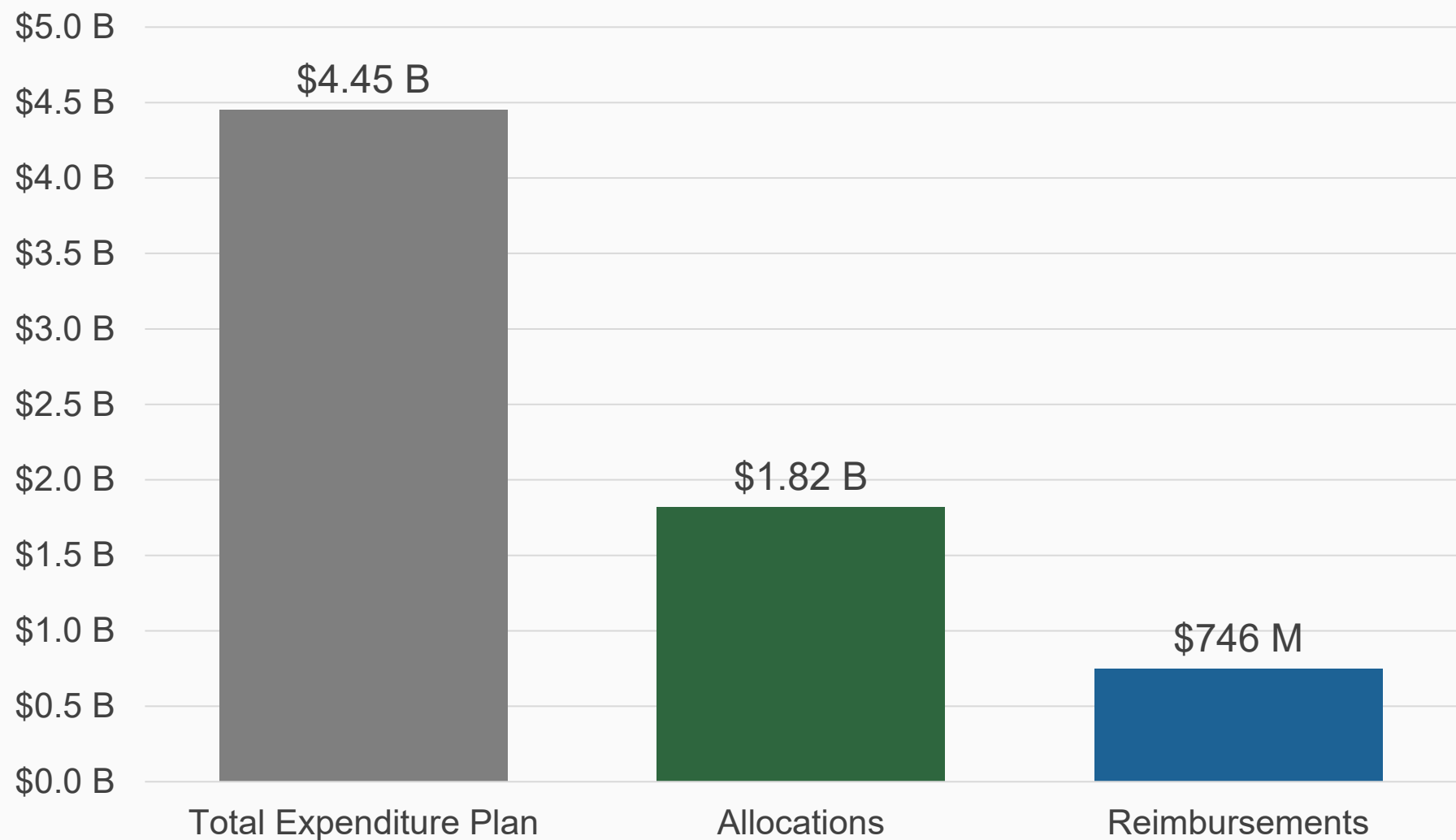
**MTC Programming and Allocations Committee**

December 10, 2025 | Agenda Item 3a-25-1486

MTC Staff

# 40% of the RM3 Capital program has been allocated

# 17% of the RM3 Capital program has been reimbursed





# Completed Projects

## AC Transit Telegraph Rapid and Quick Build Transit Priority Projects



AC Transit Photos



# Completed Projects, Continued

**I-680/SR-84 Interchange Reconstruction**

**Marin Sonoma Narrows**

**West CAT Express Bus Service in I-80 Corridor**



Caltrans Photo



WestCAT Photo



## 21 RM3-funded subprojects are in construction, highlights include:



GoPort 7<sup>th</sup> St. Grade  
Separation East

(Alameda CTC Photo)



San Mateo US-101/SR  
92 Area Improvements

(Caltrans Image)



## Construction and implementation highlights (2)



Solano SR 37/  
Fairgrounds Drive

(STA Rendering)



VTA Eastridge to BART  
Regional Connector

(VTA Photo)

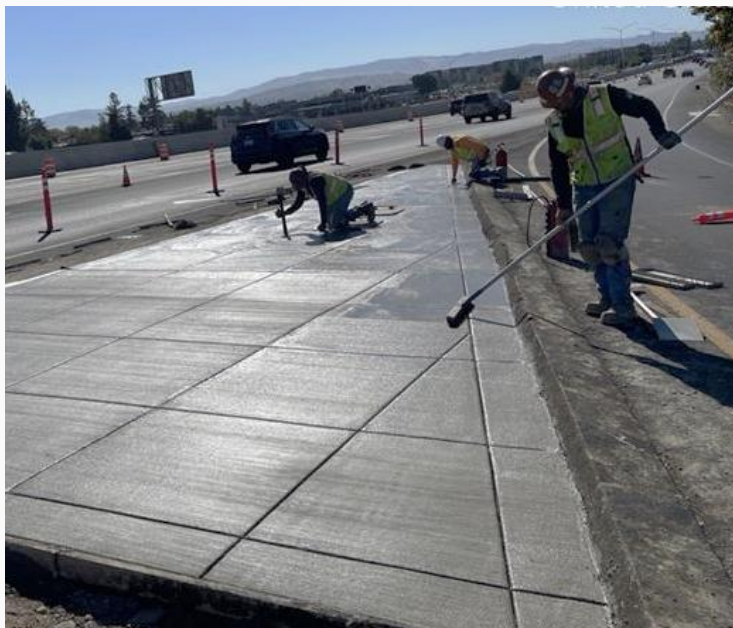


## Construction and implementation highlights (3)



### BART Expansion Cars

(BART photo)



### I-680 Express Lanes in Alameda County (pictured) and I-80 in Solano County

(Alameda CTC Photo)



### WETA Mission Bay Ferry Landing

(Port of SF Rendering)

# Regional Megaprojects are in early project development and design phases



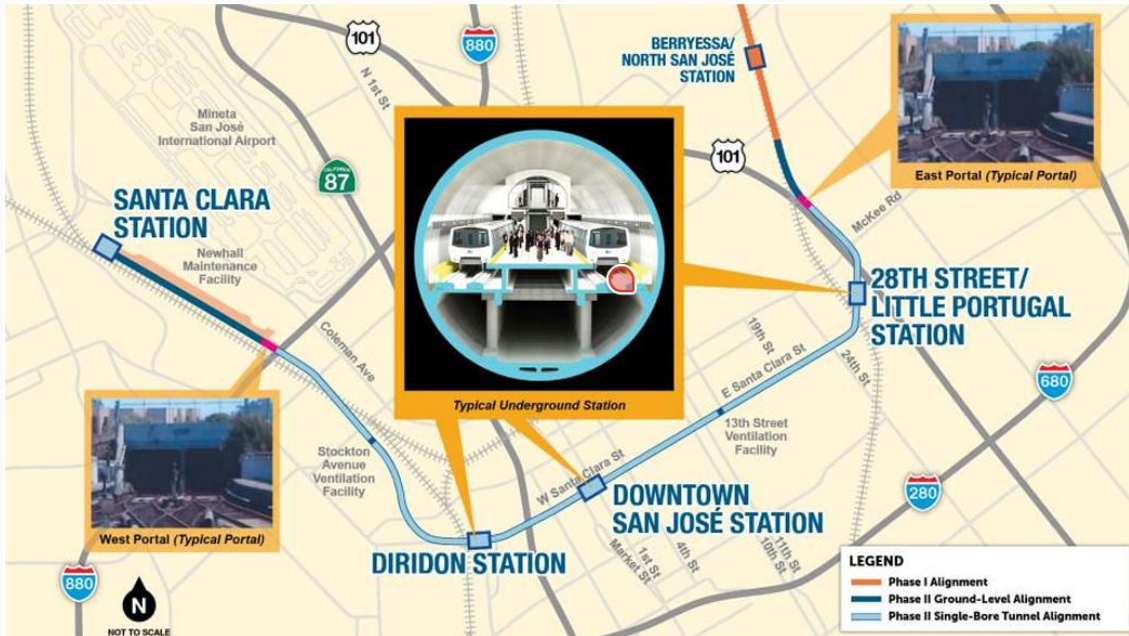
Diridon Station Rendering *(VTA Image)*



# Federal funding uncertainty adds to and exacerbates risk to delivering RM3 projects

- RM3 funding does not escalate, and delays to expending funds will effectively reduce the value of RM3 investment
- Discretionary federal grants are key elements of many RM3 project funding plans, especially large construction projects. Lack of federal awards, or delays to awards, increase project risk

# Look Ahead



BART to Silicon Valley Phase II  
Alignment Map (VTA Image)

- Total of \$96 million recommended for allocation in December
- Future: Express lanes in San Mateo County, SMART Extension to Healdsburg, US 101/ SR 84 Interchange Improvement project
- Discussions on project delivery and timing for major projects such as Bart to Silicon Valley Phase II

## Questions?