

**Association of Bay Area Governments
ABAG Administrative Committee**

September 12, 2025

Agenda Item 10b

**ABAG Resolution No. 11-2025. Adoption of Revised and New Priority Conservation Areas:
Geography Designation**

Subject:

Approval of proposed amendments to 173 existing Priority Conservation Area (PCAs) and approval of 69 proposed PCA nominations.

Background:

PCAs are a set of geographies nominated through a voluntary, locally-driven process by cities, counties, and park/open space districts, and then designated by ABAG. Although PCAs identify opportunities for land preservation and enhancement, PCA designation does not affect land use rights or override local zoning.

The PCA planning framework was first developed in 2007, but it underwent a significant update between 2022 and 2024. In May 2024, the ABAG Executive Board approved the [PCA Refresh Final Report \(Refresh\)](https://mtc.ca.gov/digital-library/5030093-priority-conservation-area-refresh-final-report) (<https://mtc.ca.gov/digital-library/5030093-priority-conservation-area-refresh-final-report>), finalizing two years of work with regional partners and stakeholders. The Refresh addressed deficiencies in the prior framework that hindered PCA analysis, planning, and advocacy. The Executive Board also directed staff to work with local governments to evaluate and amend non-conforming PCAs and to accept new nominations.

From summer 2024 to summer 2025, MTC/ABAG staff engaged with local government staff, sharing evaluations of existing PCAs and recommendations to bring them into compliance with the updated framework. During this period, 100% of PCAs needing amendments were amended. On February 13, 2025, a call for new PCA nominations was announced, resulting in 15 jurisdictions nominating 69 new PCAs. For more information on PCAs nominations, refer to Attachments B and C. Adoption of the resolution will maintain the eligibility of these PCAs for future rounds of the PCA Grant Program, while allowing new PCAs to be eligible as well.

PCA Designations:

The PCA designation process creates a map of areas that have the potential for conservation, enhancement, restoration and public access. Specific projects within designated PCAs may be eligible for future funding from the [PCA Grant Program](https://mtc.ca.gov/funding/funding-opportunities/priority-conservation-area-pca-grants) (<https://mtc.ca.gov/funding/funding-opportunities/priority-conservation-area-pca-grants>), which helps local governments, park districts, utility districts and other agencies protect or enhance properties designated as PCAs. PCAs are defined by two elements: (1) a mapped polygon geography, and (2) a designation as one or more of the five PCA types:

- Natural Lands
- Working Lands
- Urban Greening
- Recreation
- Climate Adaptation (*must be paired with a second PCA type*)

Distinctions are made between PCAs inside and outside community limits (defined as city limits or urban growth boundaries). Urban Greening PCAs are reserved for areas within community limits, while Working and most Natural Lands are reserved for areas outside them.

Existing PCA Amendments:

Upon completion of the Refresh, amendments were required to conform existing PCAs to the updated Refresh criteria over the past year. PCAs were required to eliminate any overlap between existing PCAs and conform to new data-informed requirements for PCA type designations. Amendments improved clarity in data management, supported consistent regional analysis, and ensured that PCAs designated under specific types met minimum, data-supported eligibility criteria. During the amendment process, MTC/ABAG staff held office hours with local staff to discuss amendments one-on-one and identify mapping changes. PCA amendments included revising mapped boundaries, changing PCA types, or a combination of both. All existing PCAs were amended to align with the new standards.

Amendments to Regional Trail PCAs:

The amendments include changes to four long-standing PCAs associated with the Bay Trail, Ridge Trail, Water Trail, and Coastal Trail. These regional trails were originally nominated in earlier rounds by the San Francisco Bay Trail Project in 2008 and San Mateo County on behalf of the State Coastal Conservancy in 2015. Amendments made in 2025 adjust the Bay and Ridge Trail designation from Natural Land to Recreation and reduce mapped coverage to eliminate overlaps with other PCAs, in order to ensure consistency with the updated planning framework. The Water Trail and Coastal Trail PCAs were similarly adjusted to remove overlaps.

Given the unique scale of these trail systems, the jurisdiction associated with these amendments has been classified as “Regional”, as each trail spans multiple counties and jurisdictions and therefore does not belong to any single nominating agency. For example, the Coastal Trail was originally nominated by San Mateo County but extends into Marin and other counties.

Although these PCA amendments are classified as “Regional”, it is important to note that jurisdictions and agencies would still be eligible to submit grant proposals for any PCA projects that may be located along relevant trail segments located within their boundaries. The amendment maintains PCA grant eligibility established by the original designation.

New PCA Nominations:

The 2025 call for new PCA nominations, the first call since 2019, opened from February 13 to May 2, 2025. An update was provided to the ABAG Administrative Committee on January 10, 2025, before the call was released. The nomination process included the following steps:

- **A town, city, county, or local special district** (e.g. parks or open space authority) used an online mapping tool to submit a nomination request by May 2, 2025.
- **ABAG/MTC staff reviewed submissions for eligibility** in alignment with the PCA Refresh framework, provided feedback within 3 to 10 business days, and coordinated directly with local governments to resolve any issues.
- **Local boards and councils adopted resolutions formally nominating the PCA** by July 25, 2025.

A suite of resources and targeted outreach supported local jurisdiction nomination process. An online mapping tool acted as a one-stop-shop for drawing, submitting, and editing PCA nominations, displaying a range of key datasets to inform where jurisdiction staff drew new boundaries. ABAG/MTC staff also developed a suite of resources to support local nominations, including a nomination briefier, a draft presentation template, a draft memo template, and a sample local resolution. These materials were available on the ABAG PCA webpage (<https://abag.ca.gov/PCA>). A webinar was held on March 4, 2025, at 11:00 am to share the nomination process and resources with local staff and answer initial questions; a recording of the webinar was posted to the website. Finally, ABAG/MTC staff sent individualized emails to Bay Area cities with Equity Priority Communities (EPCs) that had not previously nominated PCAs to offer additional support with the nomination process, if desired.

A total of 69 PCAs from 15 jurisdictions, covering a total of 133,000 acres, were nominated during the PCA nomination window.

Jurisdiction Feedback on PCA Amendment and Nomination Process

Local governments generally responded positively to the PCA mapping tool and associated resources. Most used the tool to submit nominations, citing its convenience and minimal information requirements. A primary motivation for most jurisdictions that nominated PCAs was to become eligible for the PCA grant program.

Some local staff did experience coordination challenges during the amendment process, particularly those who were contending with other competing local priorities or staff turnover. Staff also sought further clarification on the broad spectrum of PCA types, including how they apply in urban, suburban, and rural contexts. In response to jurisdiction feedback, staff developed enhanced mapping resources between the amendment process in 2024 and 2025 and clarified that PCA designation does not affect land use rights or override local zoning.

Recommendation:

Staff requests that the ABAG Administrative Committee approve and refer ABAG Resolution No. 11-2025 amending 173 PCAs and nominating 69 PCAs to the ABAG Executive Board for approval.

Next Steps:

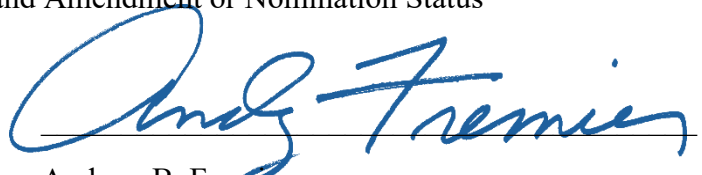
ABAG/MTC staff will maintain the PCA Mapping Viewer and data resources to ensure public access to PCA data. In both Plan Bay Area 2050+ and Plan Bay Area 2060, staff will further explore how PCAs can support both near-term implementation and long-range planning priorities.

Issues:

None identified.

Attachment:

- Attachment A: ABAG Resolution No. 11-2025
- Attachment B: Table of All PCAs and Amendment or Nomination Status
- Attachment C: Map of All PCAs and Amendment or Nomination Status



Andrew B. Fremier

**ASSOCIATION OF BAY AREA GOVERNMENTS
EXECUTIVE BOARD**

RESOLUTION NO. 11-2025

ABSTRACT

This resolution redesignates Priority Conservation Areas (PCAs) that were amended and nominated by local governments to conform to the 2024 updates to the PCA planning framework as described in ABAG Executive Board Resolution No. 7-2024. It further designates new PCAs nominated by local governments in spring 2025.

Further discussion of this action is contained in the ABAG Executive Board Summary Sheet dated September 18, 2025.

**ASSOCIATION OF BAY AREA GOVERNMENTS
EXECUTIVE BOARD**

RESOLUTION NO. 11-2025

WHEREAS, the Association of Bay Area Governments (ABAG) is the region's Council of Governments and regional land use planning agency for the San Francisco Bay Area pursuant to the Joint Exercise of Powers Act, California Government Code Section 6500 et seq.; and

WHEREAS, the Priority Conservation Areas (PCAs) planning framework recognizes that natural landscapes, unique microclimates, and varied park options are part of what makes the Bay Area a special place to live, and these natural features enable high levels of ecosystem biodiversity, a dynamic local food system, and a variety of recreation options; and

WHEREAS, PCAs identify opportunities for land preservation and enhancement; and

WHEREAS, PCAs have been a program of ABAG since they were first introduced in 2007; and

WHEREAS, PCA designation does not affect land use rights or override local zoning; and

WHEREAS, the PCA Refresh effort from 2022 to 2024 developed a comprehensive set of reforms to ensure a more effective planning framework that incorporates topics of equity and climate resilience that were adopted in Resolution No 7-2024; and

WHEREAS, staff engaged with lead contacts in local governments from summer 2024 to summer 2025, sharing evaluations of existing PCAs and recommendations for amendments to bring them into compliance with the updated framework; and

WHEREAS, on February 13, 2025, a call for new PCA nominations was announced; and

WHEREAS, 173 amended PCAs meet the updated planning framework criteria and have been approved by their respective local governments between August 2024 and July 2025; and

WHEREAS, 69 newly nominated PCAs meet the updated planning framework criteria and have been approved by their respective local governments via a local resolution between March 2025 and July 2025; and

**ASSOCIATION OF BAY AREA GOVERNMENTS
EXECUTIVE BOARD**

RESOLUTION NO. 11-2025

WHEREAS, certain long-standing Priority Conservation Areas associated with regionally significant trail networks including the Bay Trail, Ridge Trail, Water Trail, and Coastal Trail span multiple counties and jurisdictions, and were originally nominated by entities no longer serving as leads; and

WHEREAS, the preceding four PCAs are now classified as “Regional” PCAs, with amendments made in 2025 to update their type designations and remove overlaps with other PCAs; and

WHEREAS, both the amended and newly nominated PCAs will support future regional long-range plans, technical assistance, and advocacy efforts; now, therefore be it

RESOLVED, that the Executive Board of the Association of Bay Area Governments hereby certifies that the foregoing recitals are true and correct and incorporated by this reference; and, be it further

RESOLVED, that the Executive Board of the Association of Bay Area Governments, as a decision-making body, hereby designates the amendments to the Priority Conservation Areas and the newly nominated Priority Conservation Areas identified in Attachments B and C to this Resolution.

The foregoing was adopted by the ABAG Executive Board this 18th day of September, 2025.

Belia Ramos
President

Certification of Executive Board Approval

I, the undersigned, the appointed and qualified Clerk of the Board of the Association of Bay Area Governments (Association), do hereby certify that the foregoing resolution was adopted by the Executive Board at a duly called and noticed meeting held in San Francisco, California, and at other remote locations, on the 18th day of September, 2025.

Frederick Castro
Clerk of the Board

Table of Proposed PCA Nominations and Amendments

| County | Jurisdiction | Nomination or Amendment Status | Priority Conservation Area Name | Priority Conservation Area Types (Natural Land, Working Land, Urban Greening, Recreation, Climate Adaptation) |
|--------|---|--------------------------------|--|---|
| AL | City of Livermore | No Amendment Needed | Arroyo Las Positas Trail | Urban Greening; Recreation; Climate Adaptation |
| CC | City of Lafayette | No Amendment Needed | Burton Ridge | Recreation |
| CC | City of Lafayette | No Amendment Needed | Lafayette Ridge | Recreation |
| CC | City of Pittsburg | No Amendment Needed | Northwest Waterfront | Recreation |
| MR | Marin County Parks and Open Space Department | No Amendment Needed | North Golden Gate National Recreation Area Lagunitas Creek Parcels | Natural Lands; Recreation |
| NP | Napa County Regional Park and Open Space District | No Amendment Needed | Lake Curry/Suisun Creek Watershed | Natural Lands; Climate Adaptation |
| SF | San Francisco Planning | No Amendment Needed | Northern Waterfront | Recreation |
| SM | San Mateo County Parks Department | No Amendment Needed | Office of Education - Loma Mar Property | Natural Lands; Climate Adaptation |
| SC | City of Palo Alto | No Amendment Needed | Palo Alto Foothills | Natural Lands; Recreation |
| SC | Santa Clara County Parks & Recreation Department | No Amendment Needed | Alum Rock Foothills | Natural Lands; Working Lands; Recreation |
| SC | Santa Clara Valley Open Space Authority | No Amendment Needed | Coyote Ridge | Urban Greening; Recreation |
| SN | City of Santa Rosa | No Amendment Needed | Southast Greenway | Urban Greening; Recreation; Climate Adaptation |
| AL | City of Albany | Amendment | Albany Hill | Recreation |

Table of Proposed PCA Nominations and Amendments

| County | Jurisdiction | Nomination or Amendment Status | Priority Conservation Area Name | Priority Conservation Area Types (Natural Land, Working Land, Urban Greening, Recreation, Climate Adaptation) |
|--------|-------------------|--------------------------------|--|---|
| AL | City of Fremont | Amendment | Site 1-Coyote Hills | Natural Lands |
| AL | City of Livermore | Amendment | First Street | Urban Greening; Recreation; Climate Adaptation |
| AL | City of Livermore | Amendment | Livermore Arroyos, Parks and Trails | Urban Greening; Recreation |
| AL | City of Livermore | Amendment | North Livermore Valley | Natural Lands; Working Lands |
| AL | City of Livermore | Amendment | South Livermore Valley | Natural Lands; Working Lands |
| AL | City of Oakland | Amendment | Butters Canyon/Headwaters of Peralta Creek | Recreation; Climate Adaptation |
| AL | City of Oakland | Amendment | East Bay Greenway | Urban Greening; Recreation; Climate Adaptation |
| AL | City of Oakland | Amendment | Leona Canyon Creek Tributaries | Recreation; Climate Adaptation |
| AL | City of Oakland | Amendment | Oakland Natural Landscapes | Recreation; Climate Adaptation |
| AL | City of Oakland | Amendment | Oakland Priority Creek Trails | Urban Greening; Climate Adaptation |
| AL | City of Oakland | Amendment | Oakland Priority Creeks | Recreation; Climate Adaptation |
| AL | City of Oakland | Amendment | Oakland Priority Estuaries, Natural Lands | Natural Lands; Recreation; Climate Adaptation |
| AL | City of Oakland | Amendment | Oakland Priority Estuaries, Recreation | Recreation; Climate Adaptation |

Table of Proposed PCA Nominations and Amendments

| County | Jurisdiction | Nomination or Amendment Status | Priority Conservation Area Name | Priority Conservation Area Types (Natural Land, Working Land, Urban Greening, Recreation, Climate Adaptation) |
|--------|---|--------------------------------|---------------------------------|---|
| AL | City of Oakland | Amendment | Oakland Recreational Trails | Recreation; Climate Adaptation |
| AL | City of Oakland | Amendment | Oakland Urban Greening | Urban Greening; Climate Adaptation |
| AL | City of Oakland | Amendment | Ridgemont West | Recreation; Climate Adaptation |
| AL | City of Oakland | Amendment | South Hills, San Leandro Creek | Recreation; Climate Adaptation |
| AL | City of Oakland | Amendment | Temescal Creek/North Oakland | Recreation; Climate Adaptation |
| AL | City of Union City | Amendment | Union City Hillside Area | Recreation |
| AL | East Bay Regional Park District (EBRPD) | Amendment | Cedar Mountain Area | Natural Lands; Climate Adaptation |
| AL | East Bay Regional Park District (EBRPD) | Amendment | Chain of Lakes Area | Natural Lands; Climate Adaptation |
| AL | East Bay Regional Park District (EBRPD) | Amendment | Duarte Canyon Area | Natural Lands; Climate Adaptation |
| AL | East Bay Regional Park District (EBRPD) | Amendment | Potential Tesla Area | Natural Lands; Working Lands; Climate Adaptation |
| CC | City of El Cerrito | Amendment | Cerrito Creek | Recreation; Climate Adaptation |
| CC | City of El Cerrito | Amendment | Hillside Natural Area | Recreation; Climate Adaptation |
| CC | City of El Cerrito | Amendment | Ohlone Greenway | Recreation; Climate Adaptation |

Table of Proposed PCA Nominations and Amendments

| County | Jurisdiction | Nomination or Amendment Status | Priority Conservation Area Name | Priority Conservation Area Types (Natural Land, Working Land, Urban Greening, Recreation, Climate Adaptation) |
|--------|---|--------------------------------|--|---|
| CC | City of Hercules | Amendment | Central Hercules and Waterfront District | Urban Greening; Recreation; Climate Adaptation |
| CC | City of San Ramon | Amendment | Big Canyon | Natural Lands; Climate Adaptation |
| CC | Contra Costa County | Amendment | Contra Costa County Agricultural Core | Working Lands; Climate Adaptation |
| CC | Contra Costa County | Amendment | East Contra Costa County Habitat Conservation Plan/Natural Community Conservation Plan (ECCC HCP/NCCP) | Natural Lands; Working Lands; Climate Adaptation |
| CC | Contra Costa Resource Conservation District | Amendment | Pinole Creek Watershed | Natural Lands |
| CC | East Bay Municipal Utility District | Amendment | Indian Valley | Recreation; Climate Adaptation |
| CC | East Bay Regional Park District (EBRPD) | Amendment | Delta Recreation Area | Natural Lands; Climate Adaptation |
| CC | East Bay Regional Park District (EBRPD) | Amendment | Point Edith Wetlands Area | Recreation; Climate Adaptation |
| CC | East Bay Regional Park District (EBRPD) | Amendment | Point Edith Wetlands Area - Natural Lands | Natural Lands; Recreation; Climate Adaptation |
| CC | East Bay Regional Park District (EBRPD) | Amendment | Potential Pinole Watershed Area | Natural Lands; Working Lands; Recreation; Climate Adaptation |
| CC | Town of Moraga | Amendment | MOSO and NON-MOSO Open Space | Recreation |
| MR | City of Novato | Amendment | Carmel Open Space | Recreation; Climate Adaptation |
| MR | City of Novato | Amendment | Davidson Hill Area | Recreation |

Table of Proposed PCA Nominations and Amendments

| County | Jurisdiction | Nomination or Amendment Status | Priority Conservation Area Name | Priority Conservation Area Types (Natural Land, Working Land, Urban Greening, Recreation, Climate Adaptation) |
|--------|--|--------------------------------|---|---|
| MR | City of Novato | Amendment | Hill Recreation and Arroyo Avichi Creek Area | Urban Greening; Climate Adaptation |
| MR | City of Novato | Amendment | O'Hair Park | Recreation |
| MR | Fairfax, San Anselmo | Amendment | Multi-Jurisdictional: Northern Fairfax/Sleepy Hollow/Oak Manor/Wall | Recreation |
| MR | Fairfax, San Anselmo, Ross | Amendment | Multi-Jurisdictional: Southern Fairfax/Bald Hill | Recreation |
| MR | City of San Rafael | Amendment | Central Marin Bayfront, Canalways | Recreation; Climate Adaptation |
| MR | Marin County Parks and Open Space Department | Amendment | Big Rock Ridge Lands | Recreation |
| MR | Marin County Parks and Open Space Department | Amendment | Bothin Waterfront | Natural Lands; Climate Adaptation |
| MR | Marin County Parks and Open Space Department | Amendment | Bowman Canyon | Natural Lands; Working Lands |
| MR | Marin County Parks and Open Space Department | Amendment | Central Marin Ridge Lands Natural Lands | Natural Lands |
| MR | Marin County Parks and Open Space Department | Amendment | Central Marin Ridge Lands Recreation | Recreation |
| MR | Marin County Parks and Open Space Department | Amendment | Marin City Ridge | Recreation; Climate Adaptation |
| MR | Marin County Parks and Open Space Department | Amendment | Marin County Agricultural Lands | Working Lands |
| MR | Marin County Parks and Open Space Department | Amendment | North County Gateway | Natural Lands |

Table of Proposed PCA Nominations and Amendments

| County | Jurisdiction | Nomination or Amendment Status | Priority Conservation Area Name | Priority Conservation Area Types (Natural Land, Working Land, Urban Greening, Recreation, Climate Adaptation) |
|--------|--|--------------------------------|--|---|
| MR | Marin County Parks and Open Space Department | Amendment | San Geronimo Valley Headwaters of the Lagunitas Watershed and Shore of Tomales Bay | Natural Lands |
| MR | Marin County Parks and Open Space Department | Amendment | St. Vincent's and Silveira Properties | Natural Lands |
| MR | Marin County Parks and Open Space Department | Amendment | Third Valley Creek/Chicken Ranch Beach Conservation Area | Recreation; Climate Adaptation |
| MR | Marin County Parks and Open Space Department | Amendment | Tiburon Ridge Lands | Recreation |
| MR | Town of Corte Madera | Amendment | Corte Madera Marsh | Natural Lands; Recreation; Climate Adaptation |
| MR | Town of Fairfax | Amendment | Fairfax Zone 1 - Western Fairfax/Tamarancho/Cascade | Recreation |
| MR | Town of Tiburon | Amendment | Tiburon Open Space | Recreation |
| MULTI | Regional | Amendment | California Coastal Trail | Recreation |
| MULTI | Regional | Amendment | San Francisco Bay Area Water Trail | Recreation |
| MULTI | Regional | Amendment | San Francisco Bay Trail - Bay Area Ridge Trail | Recreation |
| MULTI | East Bay Regional Park District (EBRPD) | Amendment | Bethany Reservoir Area | Natural Lands; Working Lands; Climate Adaptation |
| MULTI | East Bay Regional Park District (EBRPD) | Amendment | Regional Trails System Gaps | Recreation |
| MULTI | Midpeninsula Regional Open Space District | Amendment | San Francisco Watershed Lands to Wilder Ranch State Park | Natural Lands |

Table of Proposed PCA Nominations and Amendments

| County | Jurisdiction | Nomination or Amendment Status | Priority Conservation Area Name | Priority Conservation Area Types (Natural Land, Working Land, Urban Greening, Recreation, Climate Adaptation) |
|--------|---|--------------------------------|---|---|
| NP | Land Trust of Napa County | Amendment | Napa Valley - Napa River Corridor | Natural Lands; Climate Adaptation |
| NP | Napa County | Amendment | Napa County Agricultural Lands | Working Lands |
| NP | Napa County Regional Park and Open Space District | Amendment | Blue Oak Woodlands | Natural Lands; Climate Adaptation |
| NP | Napa County Regional Park and Open Space District | Amendment | Bothe-Napa Valley State Park to Sugarloaf Ridge State Park Priority Conservation Area | Natural Lands; Climate Adaptation |
| NP | Napa County Regional Park and Open Space District | Amendment | Interior Mountains - Moore Creek to Milliken Creek | Natural Lands; Climate Adaptation |
| NP | Napa County Regional Park and Open Space District | Amendment | Palisades - Mount Saint Helena to Angwin | Natural Lands; Climate Adaptation |
| NP | Napa County Regional Park and Open Space District | Amendment | Redwood & Dry Creek Watersheds | Natural Lands |
| NP | Napa County Regional Park and Open Space District | Amendment | Southern Mountains - Skyline Park to Newell Preserve | Natural Lands |
| SF | San Francisco Planning | Amendment | Bayview Hill | Recreation |
| SF | San Francisco Planning | Amendment | Crosstown Trail | Recreation |
| SF | San Francisco Planning | Amendment | Lake Merced | Recreation |
| SF | San Francisco Planning | Amendment | McLaren Park | Recreation |
| SF | San Francisco Planning | Amendment | Ocean Beach | Recreation; Climate Adaptation |

Table of Proposed PCA Nominations and Amendments

| County | Jurisdiction | Nomination or Amendment Status | Priority Conservation Area Name | Priority Conservation Area Types (Natural Land, Working Land, Urban Greening, Recreation, Climate Adaptation) |
|--------|---|--------------------------------|---|---|
| SF | San Francisco Planning | Amendment | Outer Mission Park Connections | Urban Greening |
| SF | San Francisco Planning | Amendment | Palou Phelps Natural Area | Recreation; Climate Adaptation |
| SF | San Francisco Planning | Amendment | Treasure Island Yerba Buena Island Open Space | Urban Greening; Recreation; Climate Adaptation |
| SF | San Francisco Planning | Amendment | Twin Peaks/Glen Cayon Bioregion | Recreation |
| SF | San Francisco Planning | Amendment | Central Waterfront | Urban Greening; Recreation; Climate Adaptation |
| SF | San Francisco Planning | Amendment | India Basin Waterfront Open Space | Urban Greening; Recreation; Climate Adaptation |
| SM | City of Menlo Park | Amendment | Bedwell Bayfront Park | Recreation |
| SM | City of Menlo Park | Amendment | Menlo Park and East Palo Alto Baylands (NL) | Natural Lands; Recreation; Climate Adaptation |
| SM | City of Pacifica | Amendment | Pacifica Conservation Area: South of Mussell Rock to McNee Ranch State Park | Recreation |
| SM | City of Pacifica | Amendment | Pedro Point Headlands | Recreation |
| SM | Midpeninsula Regional Open Space District | Amendment | Lobitos Ridge Corridor | Natural Lands; Working Lands; Recreation |
| SM | Midpeninsula Regional Open Space District | Amendment | Miramontes | Natural Lands; Working Lands; Climate Adaptation |
| SM | Midpeninsula Regional Open Space District | Amendment | North Skyline | Natural Lands; Working Lands; Climate Adaptation |

Table of Proposed PCA Nominations and Amendments

| County | Jurisdiction | Nomination or Amendment Status | Priority Conservation Area Name | Priority Conservation Area Types (Natural Land, Working Land, Urban Greening, Recreation, Climate Adaptation) |
|--------|---|--------------------------------|---|---|
| SM | Midpeninsula Regional Open Space District | Amendment | South Skyline | Natural Lands; Working Lands; Climate Adaptation |
| SM | Midpeninsula Regional Open Space District | Amendment | Southern San Mateo Coast | Natural Lands; Working Lands |
| SM | Midpeninsula Regional Open Space District | Amendment | Teague Hill | Natural Lands; Climate Adaptation |
| SM | Midpeninsula Regional Open Space District | Amendment | Teague Hill Urban Area | Recreation; Climate Adaptation |
| SM | Midpeninsula Regional Open Space District | Amendment | Windy Hill | Recreation |
| SM | San Mateo County Parks Department | Amendment | Montara Mountain Complex | Recreation |
| SM | San Mateo County Parks Department | Amendment | San Bruno Mountain and Surrounding Area | Recreation; Climate Adaptation |
| SC | City of Palo Alto | Amendment | Palo Alto Baylands - Natural Lands | Natural Lands; Recreation; Climate Adaptation |
| SC | City of Palo Alto | Amendment | Palo Alto Baylands - Recreation Only | Recreation; Climate Adaptation |
| SC | Midpeninsula Regional Open Space District | Amendment | Critical Wildlife Linkage | Natural Lands; Climate Adaptation |
| SC | Midpeninsula Regional Open Space District | Amendment | Rancho San Antonio | Natural Lands; Working Lands; Climate Adaptation |
| SC | Midpeninsula Regional Open Space District | Amendment | Rancho San Antonio Urban | Recreation |
| SC | Midpeninsula Regional Open Space District | Amendment | Sierra Azul | Natural Lands; Recreation; Climate Adaptation |

Table of Proposed PCA Nominations and Amendments

| County | Jurisdiction | Nomination or Amendment Status | Priority Conservation Area Name | Priority Conservation Area Types (Natural Land, Working Land, Urban Greening, Recreation, Climate Adaptation) |
|--------|--|--------------------------------|--|---|
| SC | Midpeninsula Regional Open Space District | Amendment | Sierra Azul Urban | Recreation; Climate Adaptation |
| SC | Santa Clara County Open Space Authority | Amendment | Rancho Cañada | Natural Lands; Working Lands; Climate Adaptation |
| SC | Santa Clara County Parks & Recreation Department | Amendment | Anderson/Coyote Connection | Natural Lands; Working Lands; Climate Adaptation |
| SC | Santa Clara County Parks & Recreation Department | Amendment | Coyote Creek Parkway at Anderson | Recreation |
| SC | Santa Clara County Parks & Recreation Department | Amendment | Coyote Creek Parkway at Hellyer | Recreation; Climate Adaptation |
| SC | Santa Clara County Parks & Recreation Department | Amendment | Coyote Creek Parkway at Metcalf | Natural Lands; Recreation |
| SC | Santa Clara County Parks & Recreation Department | Amendment | East Berryessa Foothills | Natural Lands; Working Lands |
| SC | Santa Clara County Parks & Recreation Department | Amendment | East Coyote Foothills to Almaden Quicksilver | Natural Lands; Working Lands |
| SC | Santa Clara County Parks & Recreation Department | Amendment | East Gilroy Foothills | Natural Lands; Working Lands |
| SC | Santa Clara County Parks & Recreation Department | Amendment | Joseph D. Grant to Coyote Ridge | Natural Lands; Working Lands; Climate Adaptation |
| SC | Santa Clara County Parks & Recreation Department | Amendment | Lexington Hills | Natural Lands; Working Lands; Climate Adaptation |
| SC | Santa Clara County Parks & Recreation Department | Amendment | Martial Cottle | Recreation; Climate Adaptation |
| SC | Santa Clara County Parks & Recreation Department | Amendment | Paradise Valley to Calero | Natural Lands; Working Lands; Climate Adaptation |

Table of Proposed PCA Nominations and Amendments

| County | Jurisdiction | Nomination or Amendment Status | Priority Conservation Area Name | Priority Conservation Area Types (Natural Land, Working Land, Urban Greening, Recreation, Climate Adaptation) |
|--------|--|--------------------------------|---------------------------------|---|
| SC | Santa Clara County Parks & Recreation Department | Amendment | Penitencia Creek County Park | Recreation; Climate Adaptation |
| SC | Santa Clara County Parks & Recreation Department | Amendment | Pescadero/Tar Creek | Natural Lands; Working Lands; Climate Adaptation |
| SC | Santa Clara County Parks & Recreation Department | Amendment | Sanborn Skyline | Natural Lands; Working Lands; Climate Adaptation |
| SC | Santa Clara County Parks & Recreation Department | Amendment | Santa Teresa Hills | Natural Lands; Recreation; Climate Adaptation |
| SC | Santa Clara County Parks & Recreation Department | Amendment | Santa Teresa Hills North | Recreation |
| SC | Santa Clara Valley Open Space Authority | Amendment | Baylands | Natural Lands; Recreation; Climate Adaptation |
| SC | Santa Clara Valley Open Space Authority | Amendment | Baylands (Urban) | Recreation; Climate Adaptation |
| SC | Santa Clara Valley Open Space Authority | Amendment | Coyote Valley - Mid/south | Natural Lands |
| SC | Santa Clara Valley Open Space Authority | Amendment | Coyote Valley - North | Urban Greening; Recreation |
| SC | Santa Clara Valley Open Space Authority | Amendment | Field Sports Park | Natural Lands; Recreation |
| SC | Santa Clara Valley Open Space Authority | Amendment | Gilroy South | Recreation |
| SC | Santa Clara Valley Open Space Authority | Amendment | Los Gatos Creek Park | Recreation |
| SC | Santa Clara Valley Open Space Authority | Amendment | Metcalf | Natural Lands; Working Lands; Recreation; Climate Adaptation |

Table of Proposed PCA Nominations and Amendments

| County | Jurisdiction | Nomination or Amendment Status | Priority Conservation Area Name | Priority Conservation Area Types (Natural Land, Working Land, Urban Greening, Recreation, Climate Adaptation) |
|--------|---|--------------------------------|------------------------------------|---|
| SC | Santa Clara Valley Open Space Authority | Amendment | Morgan Hill South | Recreation; Climate Adaptation |
| SC | Santa Clara Valley Open Space Authority | Amendment | Mount Hamilton Range | Natural Lands; Working Lands; Climate Adaptation |
| SC | Santa Clara Valley Open Space Authority | Amendment | Northeastern Quadrant | Working Lands |
| SC | Santa Clara Valley Open Space Authority | Amendment | Pacheco Agriculture | Natural Lands; Working Lands |
| SC | Santa Clara Valley Open Space Authority | Amendment | Riparian Corridor | Urban Greening; Recreation; Climate Adaptation |
| SC | Santa Clara Valley Open Space Authority | Amendment | San Martin North Agriculture | Working Lands |
| SC | Santa Clara Valley Open Space Authority | Amendment | San Martin South Agriculture | Working Lands |
| SC | Santa Clara Valley Open Space Authority | Amendment | Santa Cruz Mountains East | Natural Lands; Working Lands; Climate Adaptation |
| SC | Santa Clara Valley Open Space Authority | Amendment | Santa Teresa Hills (Urban) | Urban Greening; Recreation |
| SC | Santa Clara Valley Open Space Authority | Amendment | Sierra Vista (Natural Land) | Natural Lands; Working Lands; Recreation |
| SC | Santa Clara Valley Open Space Authority | Amendment | Sierra Vista (Urban) | Urban Greening; Recreation |
| SC | Santa Clara Valley Open Space Authority | Amendment | South County Agriculture/Soap Lake | Working Lands; Climate Adaptation |
| SC | Santa Clara Valley Open Space Authority | Amendment | Ulistac Natural Area | Urban Greening; Recreation |

Table of Proposed PCA Nominations and Amendments

| County | Jurisdiction | Nomination or Amendment Status | Priority Conservation Area Name | Priority Conservation Area Types (Natural Land, Working Land, Urban Greening, Recreation, Climate Adaptation) |
|--------|---|--------------------------------|--|---|
| SC | Santa Clara Valley Open Space Authority | Amendment | Upper Pajaro Agriculture | Working Lands |
| SL | City of Fairfield; City of Vacaville; Solano County | Amendment | Vacaville-Fairfield-Solano Greenbelt (NL) | Natural Lands; Climate Adaptation |
| SL | City of Fairfield; City of Vacaville; Solano County | Amendment | Vacaville-Fairfield-Solano Greenbelt (Rec) | Recreation; Climate Adaptation |
| SL | City of Fairfield; City of Vacaville; Solano County | Amendment | Vacaville-Fairfield-Solano Greenbelt (WL) | Working Lands; Climate Adaptation |
| SL | City of Vallejo | Amendment | Mare Island Open Space (NL) | Natural Lands; Climate Adaptation |
| SL | City of Vallejo | Amendment | Mare Island Open Space (Rec) | Recreation |
| SL | City of Vallejo | Amendment | Napa-Sonoma Marshes Wildlife Area | Recreation; Climate Adaptation |
| SL | City of Vallejo | Amendment | White Slough Wetlands Area | Natural Lands; Recreation; Climate Adaptation |
| SL | Solano County | Amendment | Blue Ridge Hills, Vaca Mountains (East) | Natural Lands; Working Lands |
| SL | Solano County | Amendment | Blue Ridge Hills, Vaca Mountains (West) | Natural Lands; Climate Adaptation |
| SL | Solano County | Amendment | Cache Slough | Working Lands; Climate Adaptation |
| SL | Solano County | Amendment | Dixon Agricultural Service Area | Working Lands |
| SL | Solano County | Amendment | Suisun Valley | Natural Lands; Working Lands |

Table of Proposed PCA Nominations and Amendments

| County | Jurisdiction | Nomination or Amendment Status | Priority Conservation Area Name | Priority Conservation Area Types (Natural Land, Working Land, Urban Greening, Recreation, Climate Adaptation) |
|--------|---|--------------------------------|--|---|
| SL | Solano County | Amendment | Tri City and County Cooperative Planning Area (Non-Urban) | Natural Lands; Working Lands |
| SL | Solano County | Amendment | Western Hills (North) | Natural Lands |
| SL | Solano County | Amendment | Western Hills (South) | Working Lands |
| SL | Solano County; Vallejo; Fairfield | Amendment | Tri City and County Cooperative Planning Area (Urban) | Urban Greening; Recreation |
| SN | Sonoma County Agricultural Preservation and Open Space District | Amendment | Coastal Agriculture | Working Lands |
| SN | Sonoma County Agricultural Preservation and Open Space District | Amendment | Coastal Forestlands (formerly Coastal Sonoma to Armstrong Redwoods) | Natural Lands; Working Lands; Climate Adaptation |
| SN | Sonoma County Agricultural Preservation and Open Space District | Amendment | Green Valley-Atascadero Creek Watershed (formerly Pitkin Marsh - Atascadero Creek Watershed) | Working Lands |
| SN | Sonoma County Agricultural Preservation and Open Space District | Amendment | Laguna de Santa Rosa | Natural Lands; Climate Adaptation |
| SN | Sonoma County Agricultural Preservation and Open Space District | Amendment | Mayacamas North (Sonoma County) (formerly Northern Mayacamas) | Natural Lands; Working Lands; Climate Adaptation |
| SN | Sonoma County Agricultural Preservation and Open Space District | Amendment | Santa Rosa Plain | Natural Lands |
| SN | Sonoma County Agricultural Preservation and Open Space District | Amendment | Sonoma Baylands | Natural Lands; Climate Adaptation |

Table of Proposed PCA Nominations and Amendments

| County | Jurisdiction | Nomination or Amendment Status | Priority Conservation Area Name | Priority Conservation Area Types (Natural Land, Working Land, Urban Greening, Recreation, Climate Adaptation) |
|--------|---|--------------------------------|--|---|
| SN | Sonoma County Agricultural Preservation and Open Space District | Amendment | Sonoma Coast (formerly Coastal Access and Resource Protection) | Natural Lands; Climate Adaptation |
| SN | Sonoma County Agricultural Preservation and Open Space District | Amendment | Sonoma Mountain | Natural Lands; Working Lands |
| SN | Sonoma County Agricultural Preservation and Open Space District | Amendment | The Cedars | Natural Lands; Climate Adaptation |
| SN | Sonoma County Regional Parks | Amendment | Russian River (formerly Russian River Access) | Natural Lands; Climate Adaptation |
| SN | Sonoma Resource Conservation District | Amendment | Mayacamas South (Sonoma County) (formerly Mark West Creek Watershed) | Natural Lands; Climate Adaptation |
| AL | Alameda County Community Development Agency Planning Department | Nomination | Environmental Justice Priority Communities "Green Zone" | Urban Greening; Recreation; Climate Adaptation |
| AL | Alameda County Community Development Agency Planning Department | Nomination | Regional Trail Connectors in the Working Landscape | Natural Lands; Working Lands; Climate Adaptation |
| AL | Alameda County Community Development Agency Planning Department | Nomination | Resilient Fairview | Recreation; Climate Adaptation |
| AL | Alameda County Community Development Agency Planning Department | Nomination | South Bay Aqueduct Trail | Natural Lands; Working Lands; Climate Adaptation |

Table of Proposed PCA Nominations and Amendments

| County | Jurisdiction | Nomination or Amendment Status | Priority Conservation Area Name | Priority Conservation Area Types (Natural Land, Working Land, Urban Greening, Recreation, Climate Adaptation) |
|--------|---|--------------------------------|---|---|
| AL | Alameda County Community Development Agency Planning Department | Nomination | Sunol Area Creeks - Non-Urban | Natural Lands; Working Lands; Climate Adaptation |
| AL | Alameda County Community Development Agency Planning Department | Nomination | Sunol Area Creeks - Urban | Urban Greening; Recreation; Climate Adaptation |
| AL | City of Alameda | Nomination | City of Alameda Corridor | Urban Greening; Recreation |
| AL | City of Alameda | Nomination | City of Alameda Parks | Urban Greening; Recreation; Climate Adaptation |
| AL | City of Alameda | Nomination | City of Alameda Priority Planting Areas | Urban Greening; Climate Adaptation |
| AL | City of Alameda | Nomination | City of Alameda Shoreline | Urban Greening; Recreation; Climate Adaptation |
| AL | City of Alameda | Nomination | City of Alameda Trails | Urban Greening; Recreation |
| AL | City of Albany | Nomination | Albany Bay Trail/Waterfront - Recreation Only | Recreation |
| AL | City of Albany | Nomination | Albany Bay Trail/Waterfront - Climate Adaptation & Recreation | Recreation; Climate Adaptation |
| AL | City of Albany | Nomination | Priority Tree Canopy Area: Street Tree Management Plan | Urban Greening; Climate Adaptation |
| AL | Hayward Area Recreation & Park District | Nomination | 1350 E Streets Future Park (D & Clay) | Recreation |
| AL | Hayward Area Recreation & Park District | Nomination | Bay Trees Park | Recreation |

Table of Proposed PCA Nominations and Amendments

| County | Jurisdiction | Nomination or Amendment Status | Priority Conservation Area Name | Priority Conservation Area Types (Natural Land, Working Land, Urban Greening, Recreation, Climate Adaptation) |
|--------|---|--------------------------------|---------------------------------|---|
| AL | Hayward Area Recreation & Park District | Nomination | Earl Warren Park | Recreation |
| AL | Hayward Area Recreation & Park District | Nomination | Eden Greenway | Urban Greening; Recreation; Climate Adaptation |
| AL | Hayward Area Recreation & Park District | Nomination | Foothill Trail | Recreation; Climate Adaptation |
| AL | Hayward Area Recreation & Park District | Nomination | Greenbelt Trail System | Recreation; Climate Adaptation |
| AL | Hayward Area Recreation & Park District | Nomination | Greenridge Park | Natural Lands; Recreation; Climate Adaptation |
| AL | Hayward Area Recreation & Park District | Nomination | Hayward Shoreline | Recreation; Climate Adaptation |
| AL | Hayward Area Recreation & Park District | Nomination | La Vista Park | Urban Greening; Recreation |
| AL | Hayward Area Recreation & Park District | Nomination | Laurel School Site | Urban Greening; Recreation |
| AL | Hayward Area Recreation & Park District | Nomination | Meek Estate Park | Urban Greening; Recreation |
| AL | Hayward Area Recreation & Park District | Nomination | Mount Eden Mansion | Urban Greening; Recreation; Climate Adaptation |
| AL | Hayward Area Recreation & Park District | Nomination | Rowell Ranch | Working Lands |
| AL | Hayward Area Recreation & Park District | Nomination | Sulphur Creek Nature Center | Recreation |
| AL | Hayward Area Recreation & Park District | Nomination | Taper Park | Recreation |

Table of Proposed PCA Nominations and Amendments

| County | Jurisdiction | Nomination or Amendment Status | Priority Conservation Area Name | Priority Conservation Area Types (Natural Land, Working Land, Urban Greening, Recreation, Climate Adaptation) |
|--------|---|--------------------------------|---|---|
| AL | Hayward Area Recreation & Park District | Nomination | Unity Park | Urban Greening; Recreation |
| AL | Hayward Area Recreation & Park District | Nomination | Valley View Park | Urban Greening; Recreation |
| CC | City of San Pablo | Nomination | Davis Park | Urban Greening; Recreation; Climate Adaptation |
| CC | City of San Pablo | Nomination | El Portal Creekside County Property | Recreation; Climate Adaptation |
| CC | City of San Pablo | Nomination | McNeil Park | Urban Greening; Climate Adaptation |
| CC | City of San Pablo | Nomination | SPD-Hillcrest Hillside City Owned Parcels | Urban Greening; Recreation; Climate Adaptation |
| CC | City of San Pablo | Nomination | Wanlass Park | Urban Greening; Recreation; Climate Adaptation |
| CC | City of San Pablo | Nomination | Wildcat Creek-University Avenue | Urban Greening; Recreation; Climate Adaptation |
| CC | Contra Costa County | Nomination | Briones Hills Agricultural Preserve Area | Natural Lands; Working Lands; Climate Adaptation |
| CC | Contra Costa County | Nomination | Iron Horse Trail Corridor | Urban Greening; Recreation; Climate Adaptation |
| CC | Contra Costa County | Nomination | Marsh Creek Trail Corridor - Non-Urban | Natural Lands; Working Lands; Recreation; Climate Adaptation |
| CC | Contra Costa County | Nomination | Marsh Creek Trail Corridor - Urban | Recreation; Climate Adaptation |
| CC | Contra Costa County | Nomination | Tassajara Valley Preservation and Agricultural Enhancement Area | Natural Lands; Working Lands; Climate Adaptation |

Table of Proposed PCA Nominations and Amendments

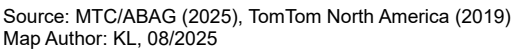
| County | Jurisdiction | Nomination or Amendment Status | Priority Conservation Area Name | Priority Conservation Area Types (Natural Land, Working Land, Urban Greening, Recreation, Climate Adaptation) |
|--------|---|--------------------------------|---|---|
| MR | Town of San Anselmo | Nomination | Faude Park | Recreation |
| MR | Town of San Anselmo | Nomination | Sorich Ranch | Recreation |
| NP | Napa County Regional Park and Open Space District | Nomination | Vine Trail | Recreation |
| SF | San Francisco Planning | Nomination | Bernal Hill | Recreation |
| SF | San Francisco Planning | Nomination | Embarcadero Waterfront | Urban Greening; Recreation |
| SF | San Francisco Planning | Nomination | Golden Gate Park | Recreation |
| SF | San Francisco Planning | Nomination | Islais Creek Area | Urban Greening; Climate Adaptation |
| SF | San Francisco Planning | Nomination | SF Core | Urban Greening; Recreation; Climate Adaptation |
| SF | San Francisco Planning | Nomination | Buena Vista Park/Corona Heights | Recreation |
| SF | San Francisco Planning | Nomination | Mission Creek and Mission Green Zone Area | Urban Greening; Recreation; Climate Adaptation |
| SF | San Francisco Planning | Nomination | Sunset Boulevard | Urban Greening |
| SF | San Francisco Planning | Nomination | Yosemite Creek and Candlestick Area | Urban Greening; Recreation; Climate Adaptation |
| SM | City of Redwood City Community Development Department | Nomination | Bair Island and Westpoint Slough | Recreation; Climate Adaptation |

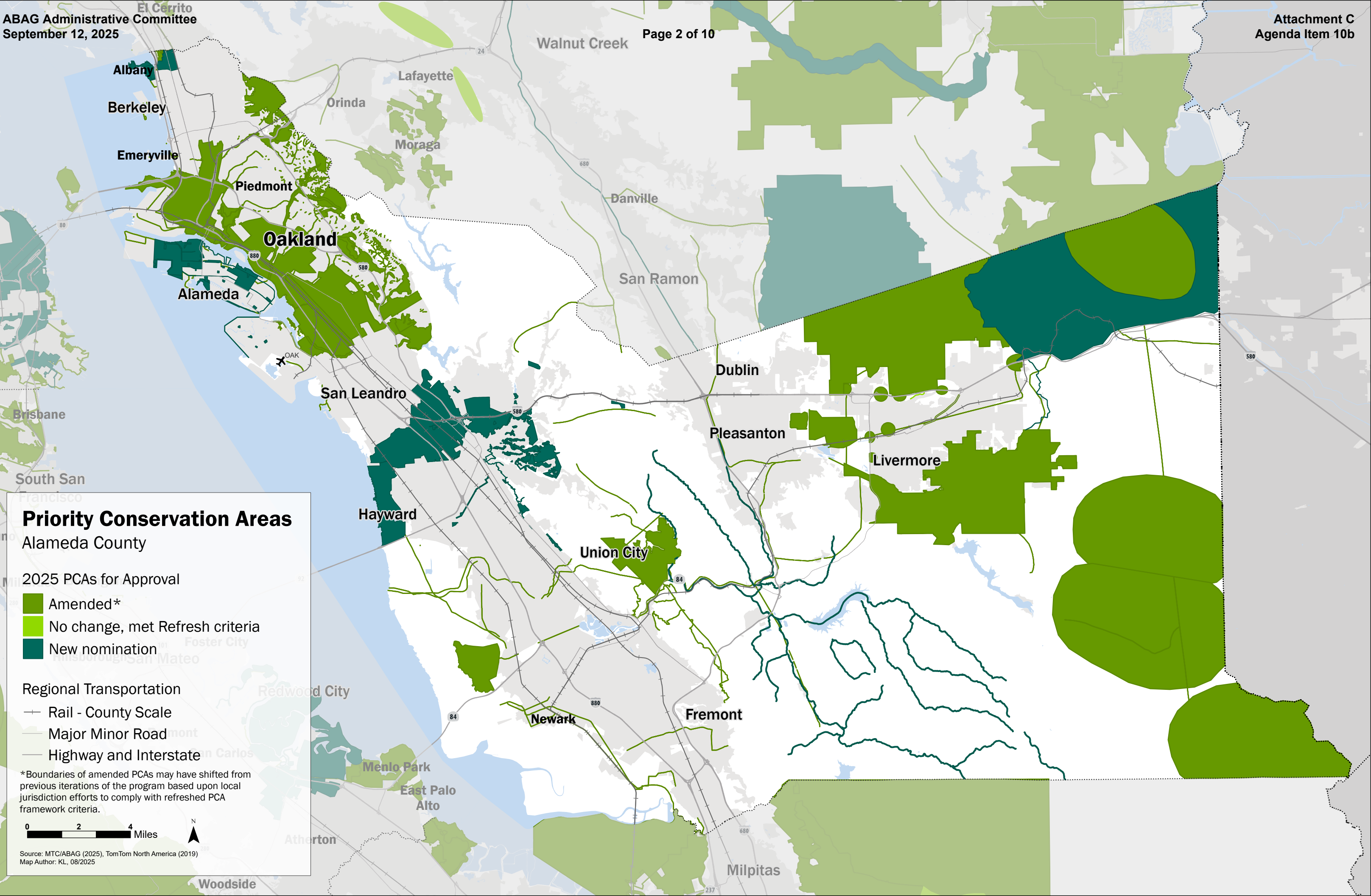
Table of Proposed PCA Nominations and Amendments

| County | Jurisdiction | Nomination or Amendment Status | Priority Conservation Area Name | Priority Conservation Area Types (Natural Land, Working Land, Urban Greening, Recreation, Climate Adaptation) |
|--------|---|--------------------------------|---|---|
| SM | City of Redwood City Community Development Department | Nomination | Greater Downtown and Southeast Redwood City | Urban Greening; Recreation; Climate Adaptation |
| SM | City of Redwood City Community Development Department | Nomination | Redwood Shores | Recreation; Climate Adaptation |
| SM | Town of Portola Valley | Nomination | Alpine Road Scenic Corridor | Recreation; Climate Adaptation |
| SC | City of Petaluma | Nomination | Climate-Adaptive Safe Routes to School PCA | Urban Greening; Recreation; Climate Adaptation |
| SC | City of Petaluma | Nomination | Petaluma River Park | Urban Greening; Recreation; Climate Adaptation |
| SC | City of Petaluma | Nomination | Petaluma River Park II | Urban Greening; Recreation; Climate Adaptation |
| SC | Santa Clara Valley Habitat Agency | Nomination | Upper Pacheco | Natural Lands; Working Lands; Climate Adaptation |
| SN | City of Cotati | Nomination | Laguna de Santa Rosa and Cotati Creek | Urban Greening; Recreation; Climate Adaptation |
| SN | City of Cotati | Nomination | McGinnis Open Space | Urban Greening; Climate Adaptation |
| SN | City of Cotati | Nomination | Veronda-Falletti Ranch | Urban Greening; Recreation; Climate Adaptation |
| SN | City of Sonoma | Nomination | Fryer Creek | Recreation; Climate Adaptation |
| SN | City of Sonoma | Nomination | Nathanson Creek | Urban Greening; Climate Adaptation |
| SN | City of Sonoma | Nomination | Regional Trail | Urban Greening; Recreation; Climate Adaptation |

Table of Proposed PCA Nominations and Amendments

| County Jurisdiction | | Nomination or Amendment Status | Priority Conservation Area Name | Priority Conservation Area Types (Natural Land, Working Land, Urban Greening, Recreation, Climate Adaptation) |
|---------------------|----------------|--------------------------------|---------------------------------|---|
| SN | City of Sonoma | Nomination | Sonoma Creek | Urban Greening; Recreation; Climate Adaptation |





Priority Conservation Areas

Alameda County

2025 PCAs for Approval

- Amended*
- No change, met Refresh criteria
- New nomination

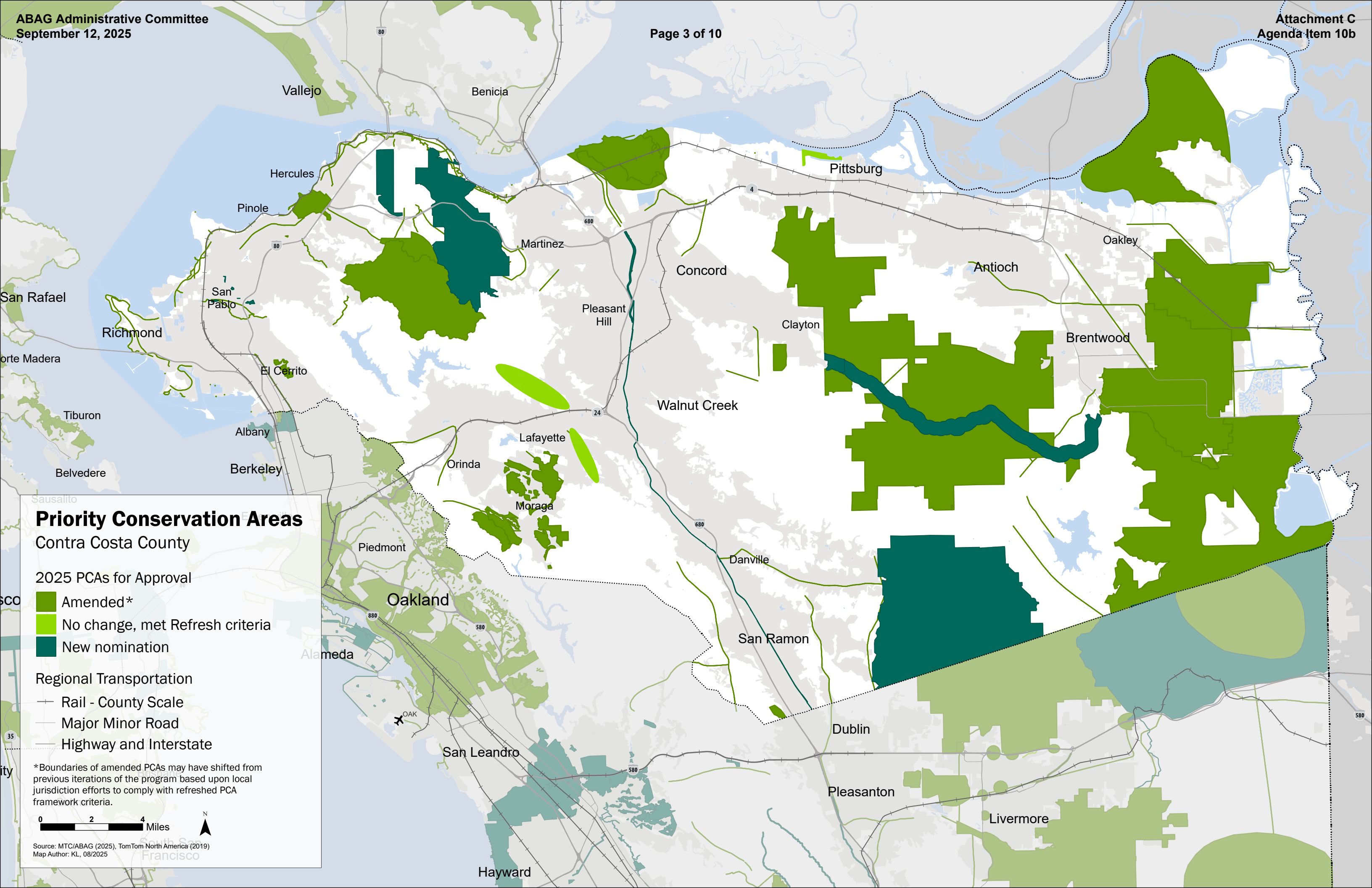
Regional Transportation

- Rail - County Scale
- Major Minor Road
- Highway and Interstate

*Boundaries of amended PCAs may have shifted from previous iterations of the program based upon local jurisdiction efforts to comply with refreshed PCA framework criteria.

0 2 4 Miles

Source: MTC/ABAG (2025), TomTom North America (2019)
Map Author: KL, 08/2025



Priority Conservation Areas

Contra Costa County

2025 PCAs for Approval

- Amended*
- No change, met Refresh criteria
- New nomination

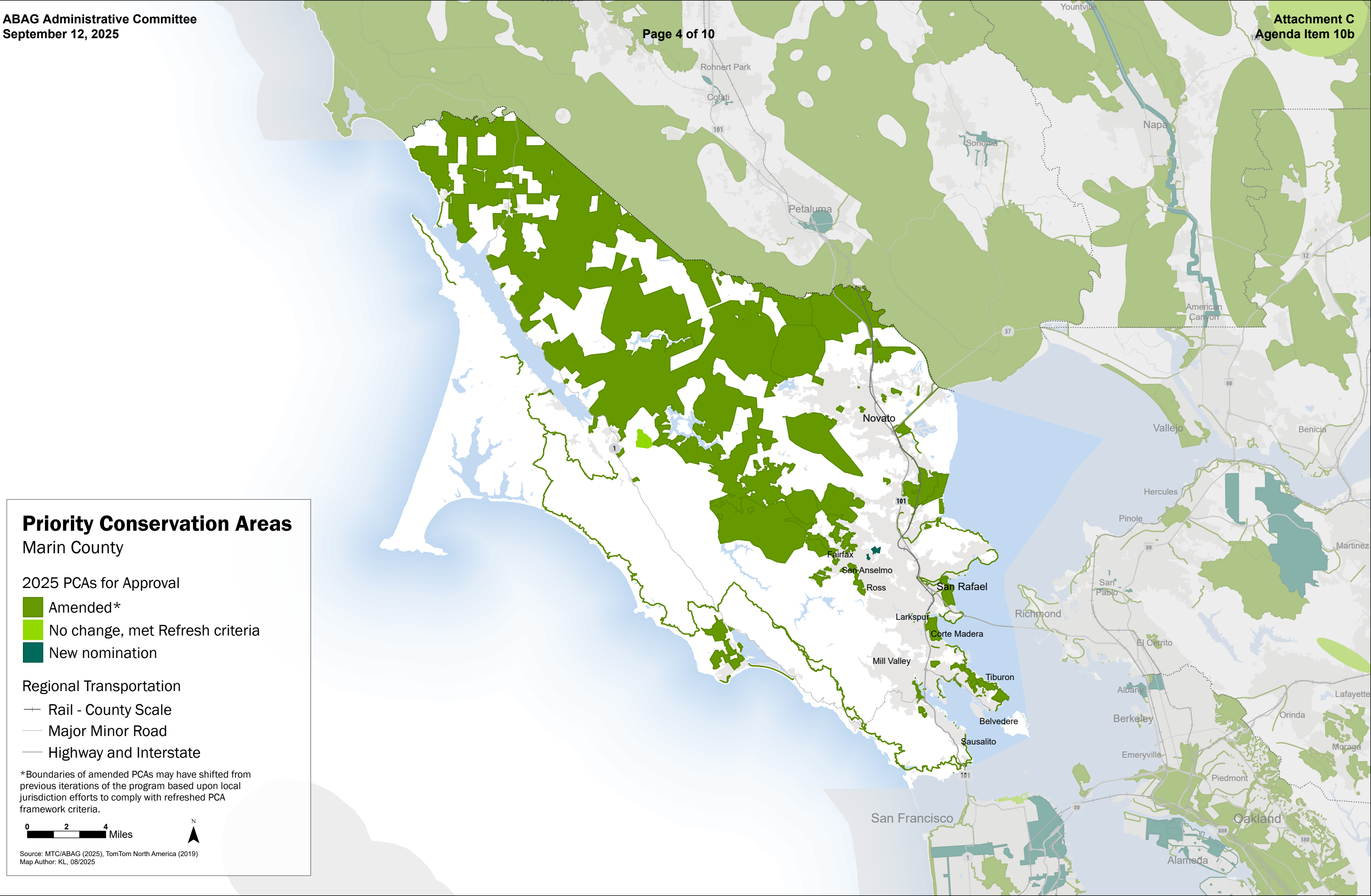
Regional Transportation

- Rail - County Scale
- Major Minor Road
- Highway and Interstate

*Boundaries of amended PCAs may have shifted from previous iterations of the program based upon local jurisdiction efforts to comply with refreshed PCA framework criteria.

0 2 4 Miles

Source: MTC/ABAG (2025), TomTom North America (2019)
Map Author: KL, 08/2025



Priority Conservation Areas

Marin County

2025 PCAs for Approval

- Amended*
- No change, met Refresh criteria
- New nomination

Regional Transportation

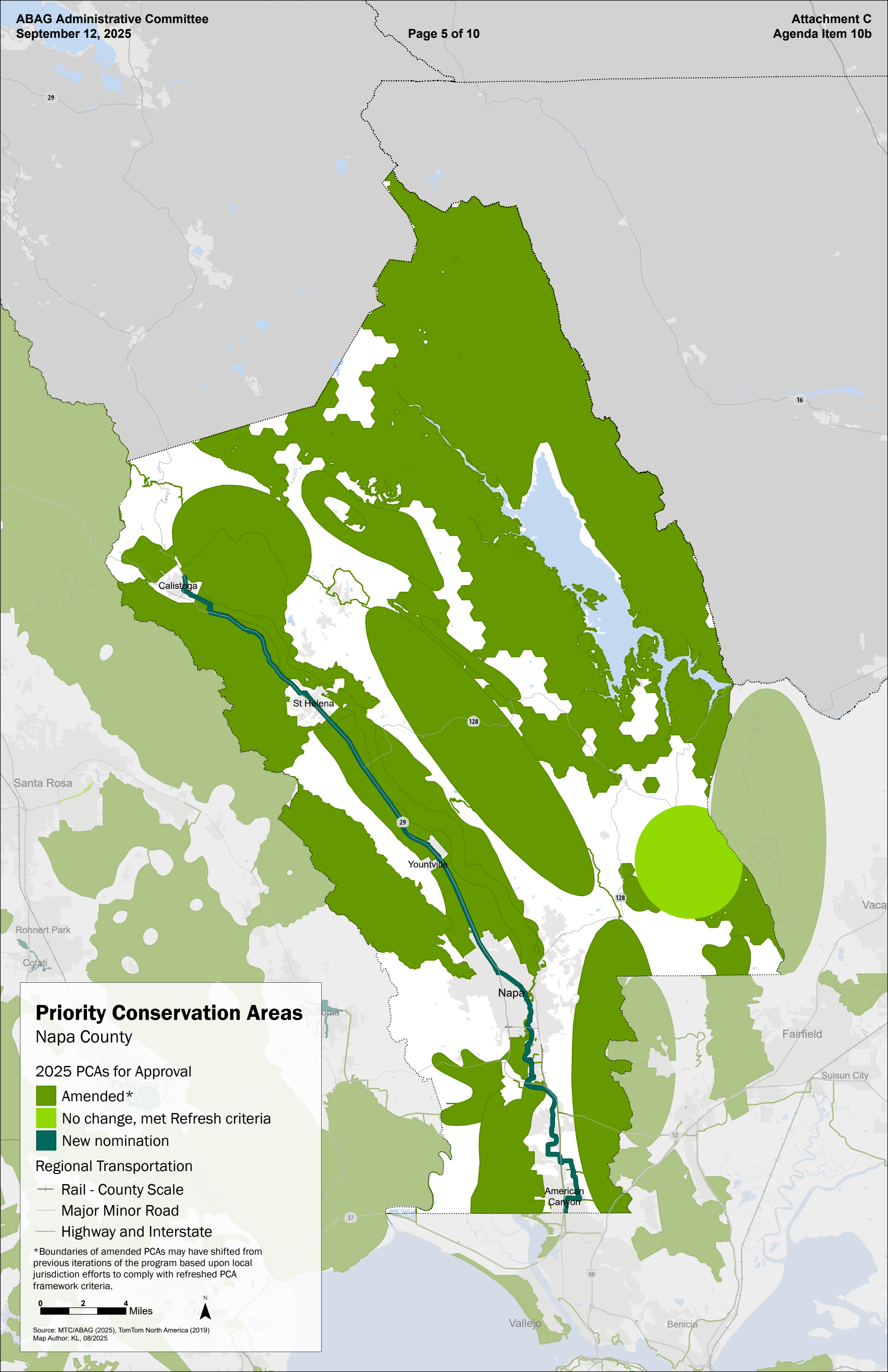
- Rail - County Scale
- Major Minor Road
- Highway and Interstate

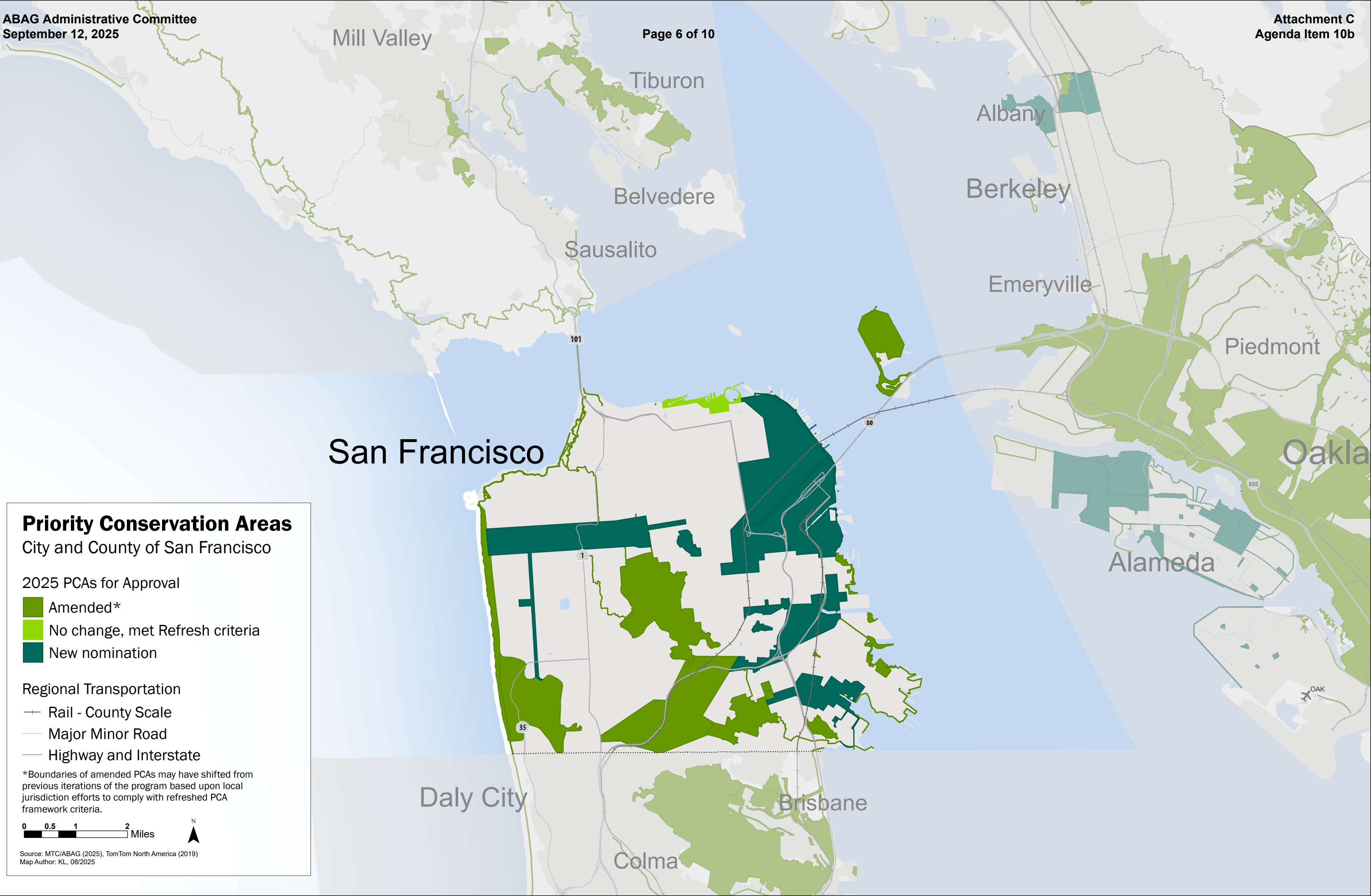
*Boundaries of amended PCAs may have shifted from previous iterations of the program based upon local jurisdiction efforts to comply with refreshed PCA framework criteria.

0 2 4 Miles



Source: MTC/ABAG (2025), TomTom North America (2019)
Map Author: KL, 08/2025





Priority Conservation Areas

City and County of San Francisco

2025 PCAs for Approval

- Amended*
- No change, met Refresh criteria
- New nomination

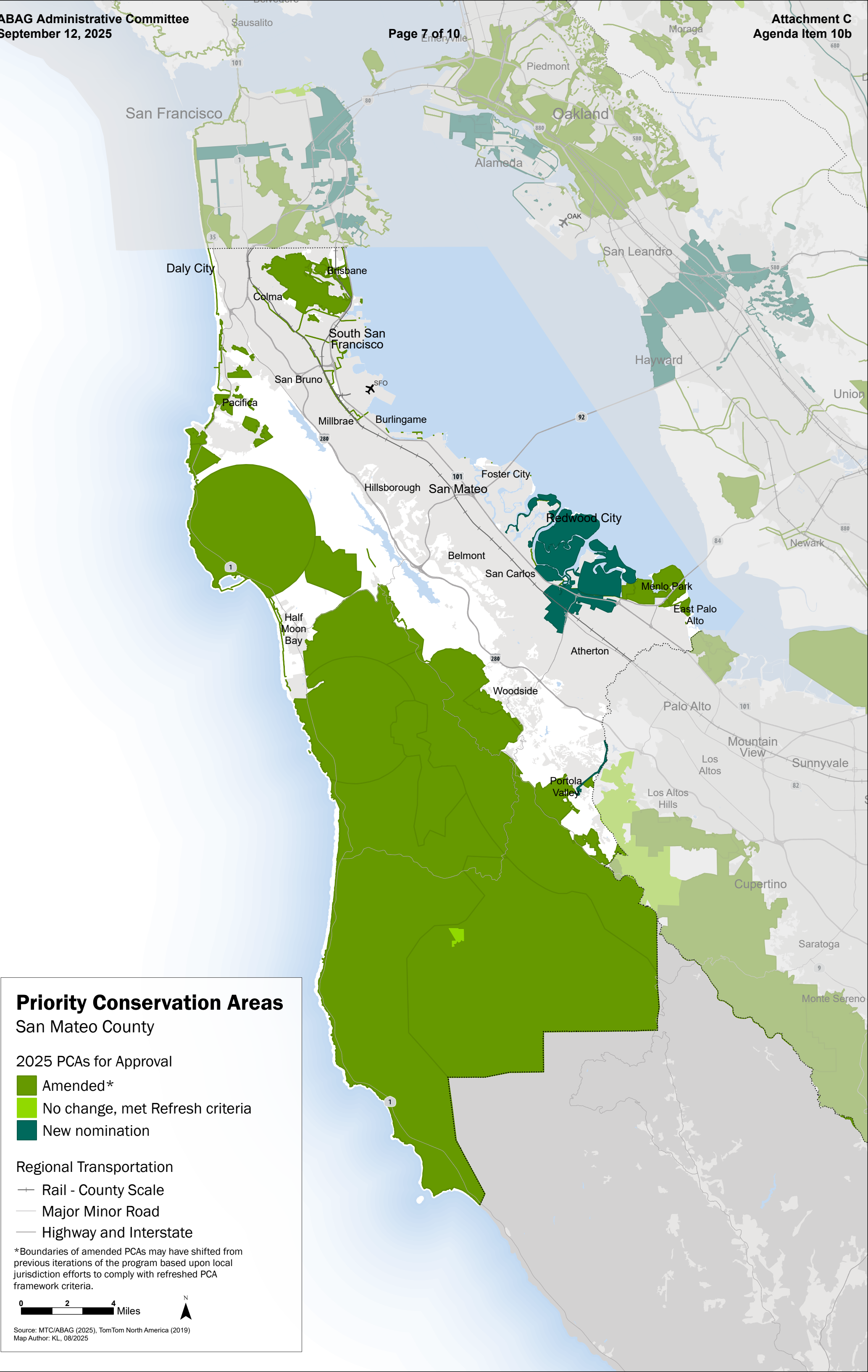
Regional Transportation

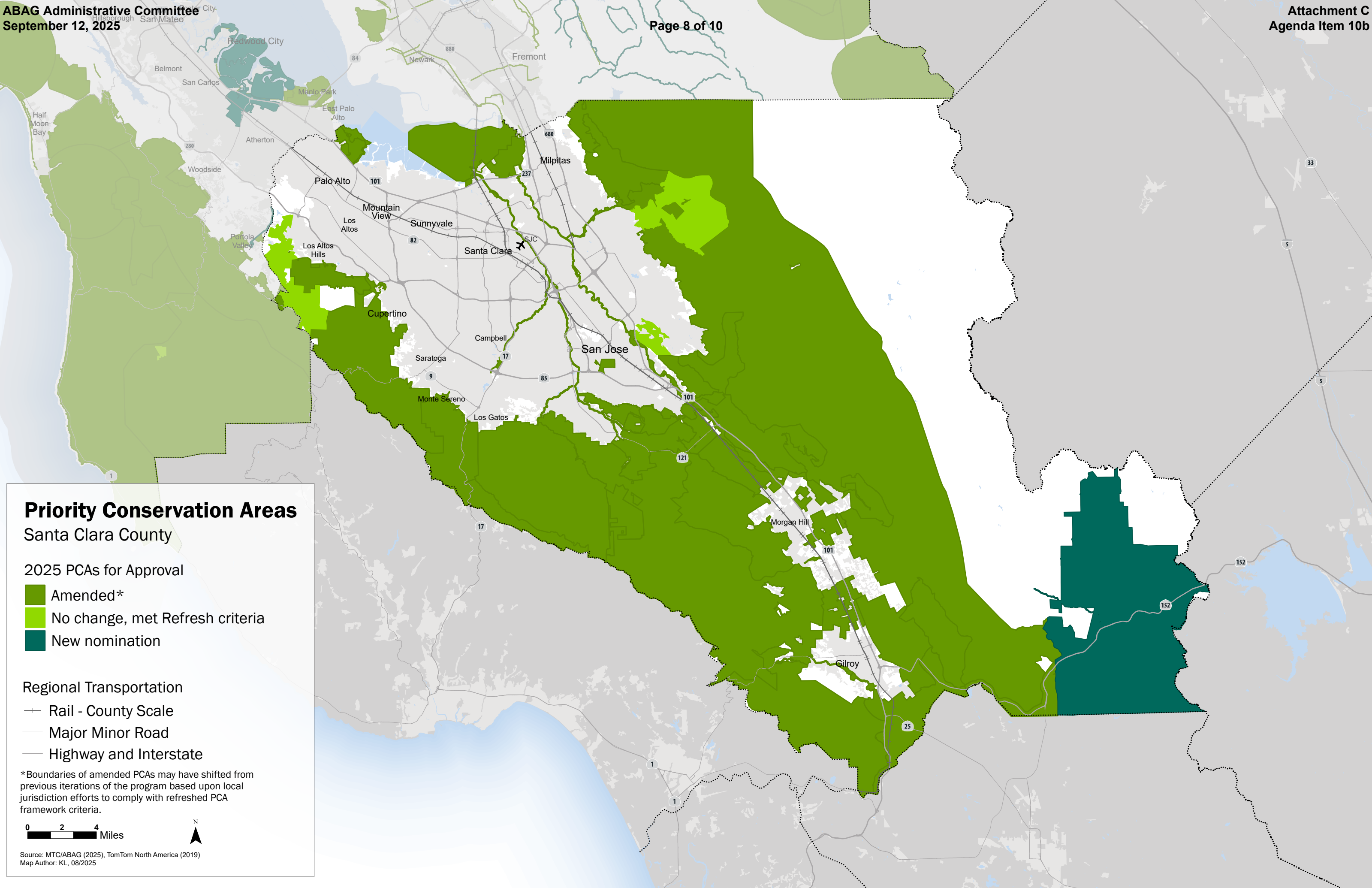
- Rail - County Scale
- Major Minor Road
- Highway and Interstate

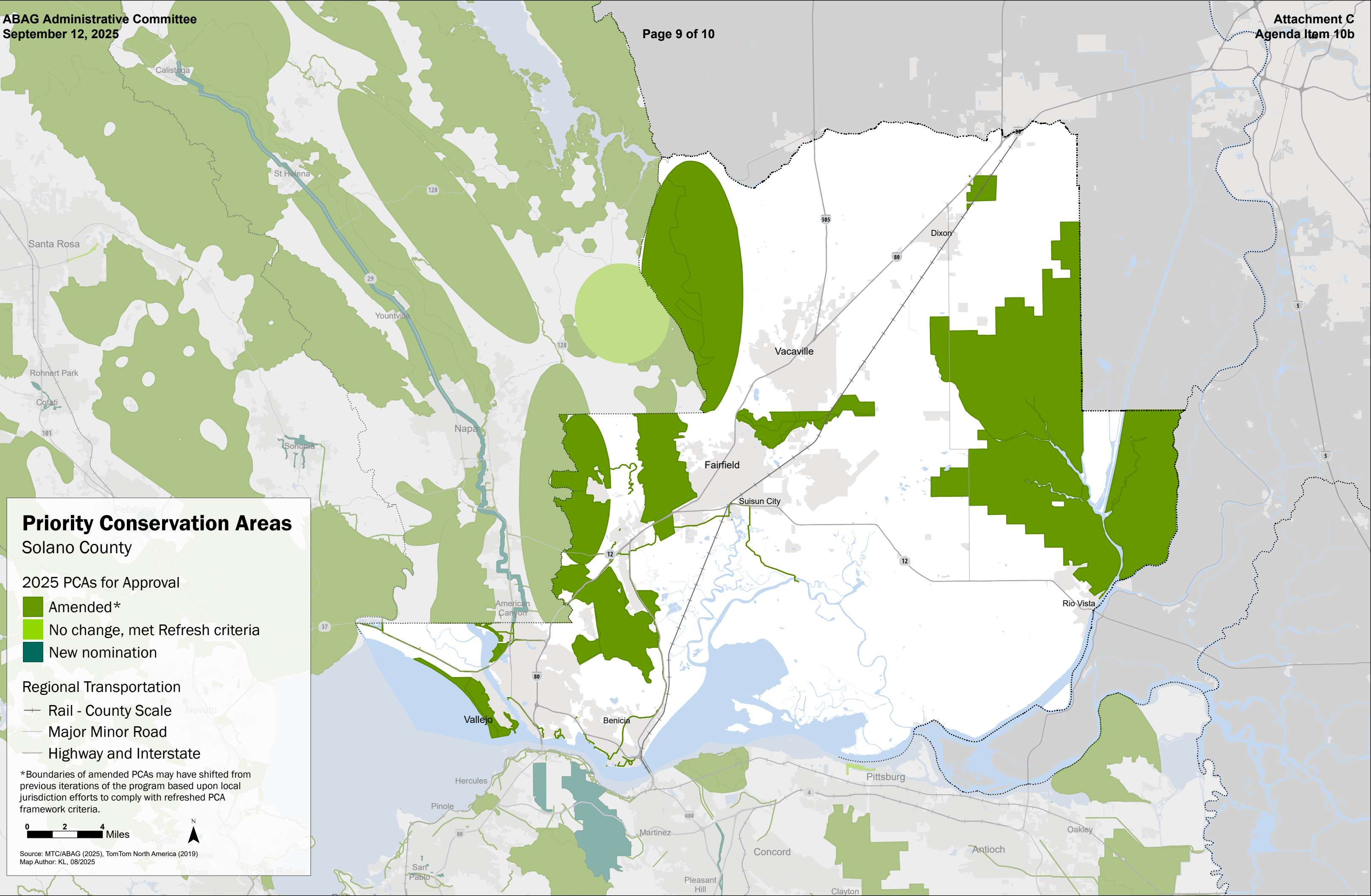
*Boundaries of amended PCAs may have shifted from previous iterations of the program based upon local jurisdiction efforts to comply with refreshed PCA framework criteria.

0 0.5 1 2 Miles

Source: MTC/ABAG (2025), TomTom North America (2019)
Map Author: KL, 08/2025







Priority Conservation Areas Solano County

2025 PCAs for Approval

- Amended*
- No change, met Refresh criteria
- New nomination

Regional Transportation

- Rail - County Scale
- Major Minor Road
- Highway and Interstate

*Boundaries of amended PCAs may have shifted from previous iterations of the program based upon local jurisdiction efforts to comply with refreshed PCA framework criteria.

0 2 4 Miles



Source: MTC/ABAG (2025), TomTom North America (2019)
Map Author: KL, 08/2025

Priority Conservation Areas
Sonoma County

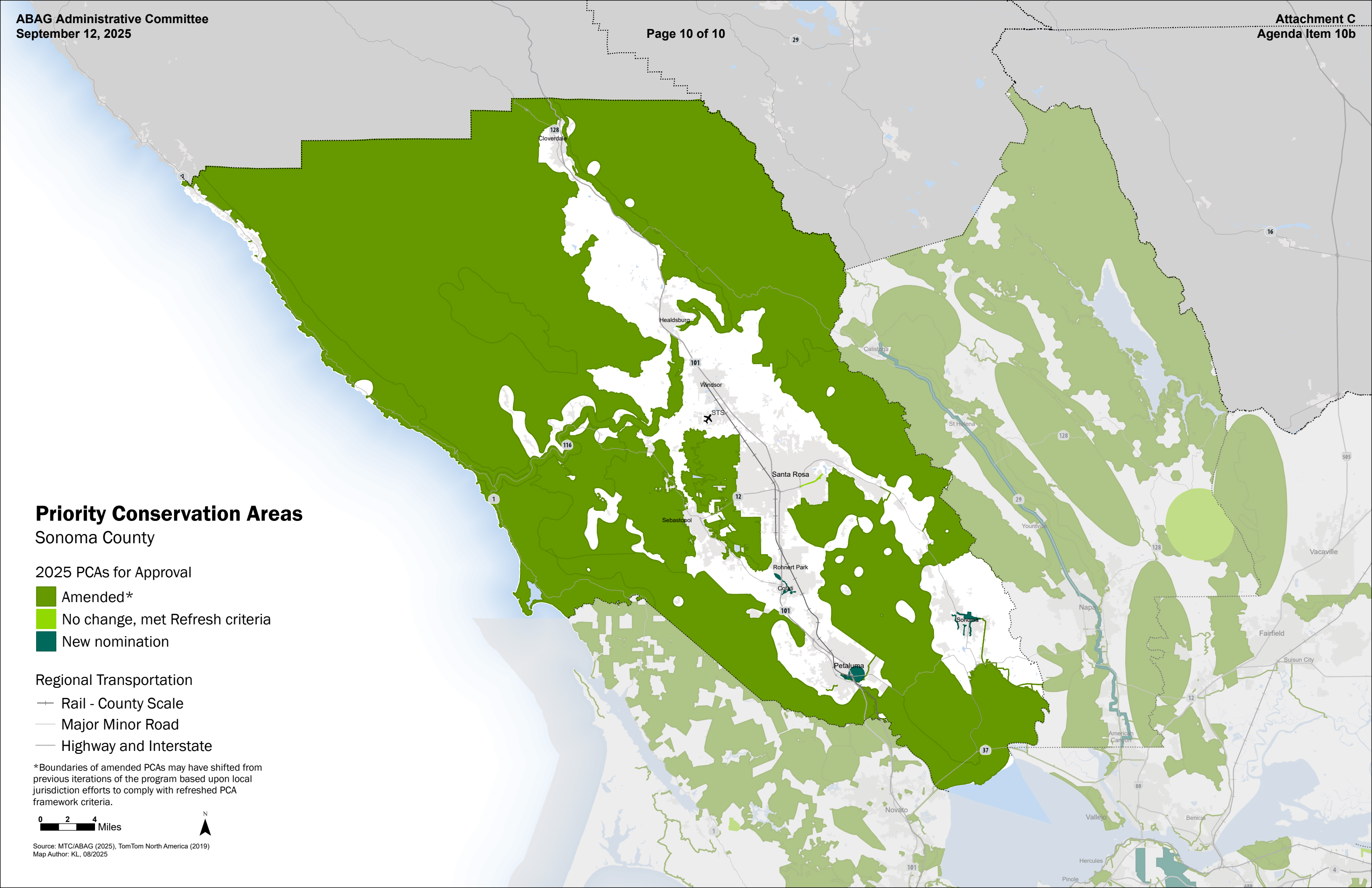
2025 PCAs for Approval

- Amended*
- No change, met Refresh criteria
- New nomination

Regional Transportation

- Rail - County Scale
- Major Minor Road
- Highway and Interstate

*Boundaries of amended PCAs may have shifted from previous iterations of the program based upon local jurisdiction efforts to comply with refreshed PCA framework criteria.



From: [Martha Silver](#)
To: [Martha Silver](#)
Subject: Agenda Item 10b: Priority Conservation Area App - Petaluma River Park
Date: Monday, August 25, 2025 12:04:05 PM

From: Susan Kirks
Sent: Sunday, August 24, 2025 2:54 PM
To: MTC-ABAG Info <info@bayareametro.gov>
Cc: Fred Castro <fcastro@bayareametro.gov>; Kate Lyons <klyons@bayareametro.gov>
Subject: Priority Conservation Area App - Petaluma River Park

You don't often get email from . [Learn why this is important](#)

External Email

August 24, 2025

Dear Ms. Lyons,

I understand ABAG has received or will receive an application from the Petaluma River Park Foundation and the City of Petaluma, to designate a park, adjacent property to the park purchased to develop, and, rather oddly, the Petaluma River and a Safe Routes to School segment of the requested PCA designation..

I oppose this application and do not believe this constructed application merits consideration as a Priority Conservation Area. The application is self-motivated from the Petaluma River Park Foundation and appears also to be an action to promote opportunities for other grant funding, rather than being a strong environmental area that would merit protection.

If the City of Petaluma and community groups are interested in understanding environmental areas that could merit Priority Conservation Area designations, then a comprehensive understanding of the Petaluma Valley where the City of Petaluma exists and relevant environmental areas need to be undertaken. The City of Petaluma is currently engaged in a General Plan Update process, but input from environmental experts to that process has been generally ignored, in favor of the politically popular information. The Environment and Natural Systems section of this Update is woefully inadequate with inaccurate information. I would not be surprised to see the City Council move through a process to approve the Update, with the inaccurate and incomplete information.

The Petaluma River is a tidal slough, the northernmost area of the San Francisco Bay Estuary. Conservation efforts related to the Petaluma River have been minimal, if at all, compared to promotion of recreation and human encroachment into sensitive areas. The City ignored input about a longstanding migratory Cliff Swallow nesting colony under the Petaluma River Bridge in south Petaluma and submitted a grant

application for trail funding directly beneath this nesting area. That application was denied at the State level and at the Regional level. The City staff do not listen to input about federal and state regulatory requirements related to nesting birds and only began complying somewhat with these regulations after I brought a CDFW Warden to the City Parks Department to explain the requirements. Thus, over many many years, the City and its contractors have mowed down active nests and killed birds, without any regard whatsoever for the environment or the delicate life in migratory nesting areas of the Petaluma Wetlands.

The Petaluma Wetlands in the southern part of Petaluma, adjacent to the Petaluma River, received a designation of Ramsar Wetland of International Importance in 2018. How did this occur? It certainly was not as a result of City of Petaluma action. I initiated the application, completed the application and mapping with GreenInfo Network, funded the application, and handed it to the City of Petaluma staff to submit for consideration. This was the City's only action in this entire process. From 2014 to 2018, I then regularly followed up with the San Francisco Bay Joint Venture to press for the application to be submitted and recognized by the USFWS. Finally, in 2018, the designation became official. This was achieved via the auspices of Madrone Audubon, an organization I led for many years. To this date, the City of Petaluma has never acknowledged or expressed one word of gratitude for all of the effort given toward true environmental protection and recognition achieved for the Petaluma Wetlands properties. Not requested as a Priority Conservation Area, the Petaluma Wetlands would definitely merit such an application. Typical the City of Petaluma's insensitivity, the City constructed a large concrete pad stage with metal benches to seat up to 50 people in an area of part of the Petaluma Wetlands that is proximal to longstanding ground nesting bird habitat and foraging area for shorebirds - to be a "gathering" place for people and a place to educate students. This sends a message to students that they are most important in an environmental park setting - not the birds and organisms that rely on the area for nesting and sustenance. This is the wrong message for young people in the climate crisis. This concrete pad stage and the metal benches were readily approved by the Petaluma City Council, a group of elected officials without environmental awareness, which follows the inadequacy of the City government policies and actions.

Another important area of priority conservation in the Petaluma Valley is the West Hills and urban-rural transition of West Petaluma. Whereas the Petaluma Wetlands are habitat to multiple bird species, including threatened and endangered, the West Hills comprise grassland and an urban-wildland interface with diminishing, critically important grassland, home and movement areas to special status American Badger, a keystone species, along with multiple other local wildlife, raptors and songbirds. The City of Petaluma has caused severe damage to a conserved open space land, the only badger sanctuary in California, with the City's construction actions in habitat causing displacement of an adult female badger from her natal territory. Wildlife corridors in the Petaluma Valley are also important to understand and protect, a reality the City of Petaluma ignores and mischaracterizes by claiming that the Sonoma Valley Wildlife Corridor is adjacent to the City of Petaluma (false).

As someone whose conservation work in Petaluma, Sonoma County and the Bay

Area for 26 years, I have been engaged in advocacy and action to protect the environment in the Petaluma Valley and the North Bay Area. We have wildlife who are desperate to remain in their habitat, forage for prey and find water to survive. Of course, obtaining funds to purchase a part of the McNear Peninsula and make that into a high-access for people park and to purchase an adjacent property to add housing and purport to "restore" habitat is admirable. But, this area is not critical for habitat in the Petaluma area and the effort to add Petaluma River and Safe Routes to School as part of the application does not add merit to the application. If we are going to consider Priority Conservation Areas, these need to be truly areas in need of conservation as a priority. As for the Petaluma River, the tidal slough, the Petaluma City Council just approved a large townhouse complex near the banks of the Petaluma River after a very strong community effort to conserve the same land along with other acreage in the north river area.

The Safe Routes to School segment of the River Park's PCA application is also odd and appears to be an effort to boost the application into a transportation related area. The City's Active Transportation Plan has resulted in bike lanes on busy streets that are not safe and, frankly, few parents would say good bye to a child going to school, riding a bike in a bike lane on a Petaluma street. Such a segment also does not relate to the Petaluma River Park.

The City of Petaluma is not racially diverse and changes in that reality are not occurring. The City's racial composition is primarily white, uppder middle class and upper class white, with a small percentage of Latino/a and Hispanic residents, and a minute percentage of other racial groups. We see quite a bit of promotion of "diversity and equity" but the reality is far from the exaggerated public relations of the City government. Even a building for housing that incudes some low income and very low income units will not change the City of Petaluma known lack of racial diversity.

It is my impression the Petaluma River Park application to ABAG, with the City of Petaluma jumping on board to be a "partner" attempts to create a so-called conservation area that would appear to have components in several of the PCA considerations. This is a fabricated circumstance, however, and this small peninsula "park" with adjacent land that will be developed at some point in the future,, and added segments to attempt to enhance the application.

While I can appreciate an effort to obtain a PCA, this application, without any question, does not merit such a designation by ABAG. Habitat and natural resources are minimal, and in the Petaluma Valley where this park exists, many more areas are in dire need of conservation and ongoing protection to help species and their habitats survive.

The Petaluma River and Safe Routes to School additions to this application are both inappropriate and unrealistic in terms of how community members in Petaluma live and care for their families and each other.

I understand politics and other influences normally comprise decisions of government entities. I do not expect my comment to be influential, unless committee members

and Board members are interested in decisions that are based more in reality as compared to PR and questionable reasons for requesting a PCA designation. My interest is actual conservation to support natural resource protection, enhancement and harmony. If a real evaluation of natural resources and other facets of a greater community occur, decisions from that approach will build upon each other to contribute to Bay Area quality of life for all.

Sincerely,
iSusan Kirks
Naturalist
Chair of Board, Paula Lane Action Network (PLAN)
Past President, Madrone Audubon, Sonoma County