

Multimodal Bay Skyway

RM3: Safe Routes to Transit/Bay Trail



San Francisco
County Transportation
Authority

Multimodal Bay Skyway

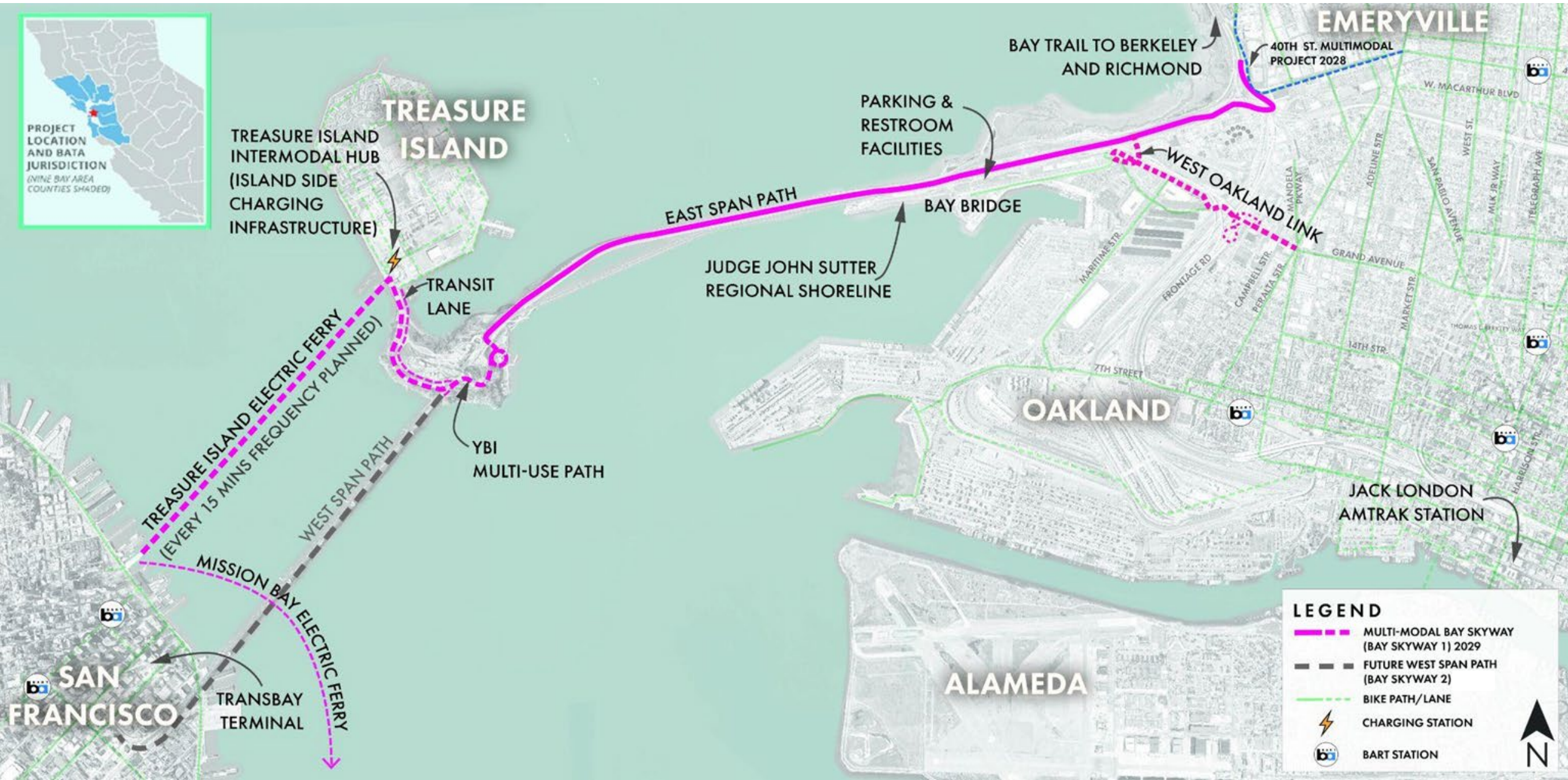
The Multimodal Bay Skyway (MMBS) is a transformative project that will:

- Extend the existing East Span multi-use path to Treasure Island via the Yerba Buena Island Multi-Use Path and to West Oakland via the West Oakland Link.
- Provide a safe, emission-free, and low-cost multimodal transportation connection between West Oakland and downtown San Francisco by connecting to future electric ferry transit and expedited bus services.

Although the absence of full funding prevents all segments from being constructed as planned, the RM3:Bay Trail/Safe Routes to Transit funding (\$23.75 million) will allow for an interim solution that provides similar access. The Interim MMBS will utilize the Bay Bridge Forward Grand Ave path and new projects on Yerba Buena Island to deliver a multimodal solution in 2029, with the full Multimodal Bay Skyway coming when other funding sources are secured.

Original Multimodal Bay Skyway

(Original West Oakland Link (WOL) + Original Yerba Buena Island Multi-Use Path (YBI MUP))



Interim Multimodal Bay Skyway

(Interim West Oakland Link (WOL) + Interim Yerba Buena Island Multi-Use Path (YBI MUP))

