

# **CARTA + Northern California Megaregion Working Group**

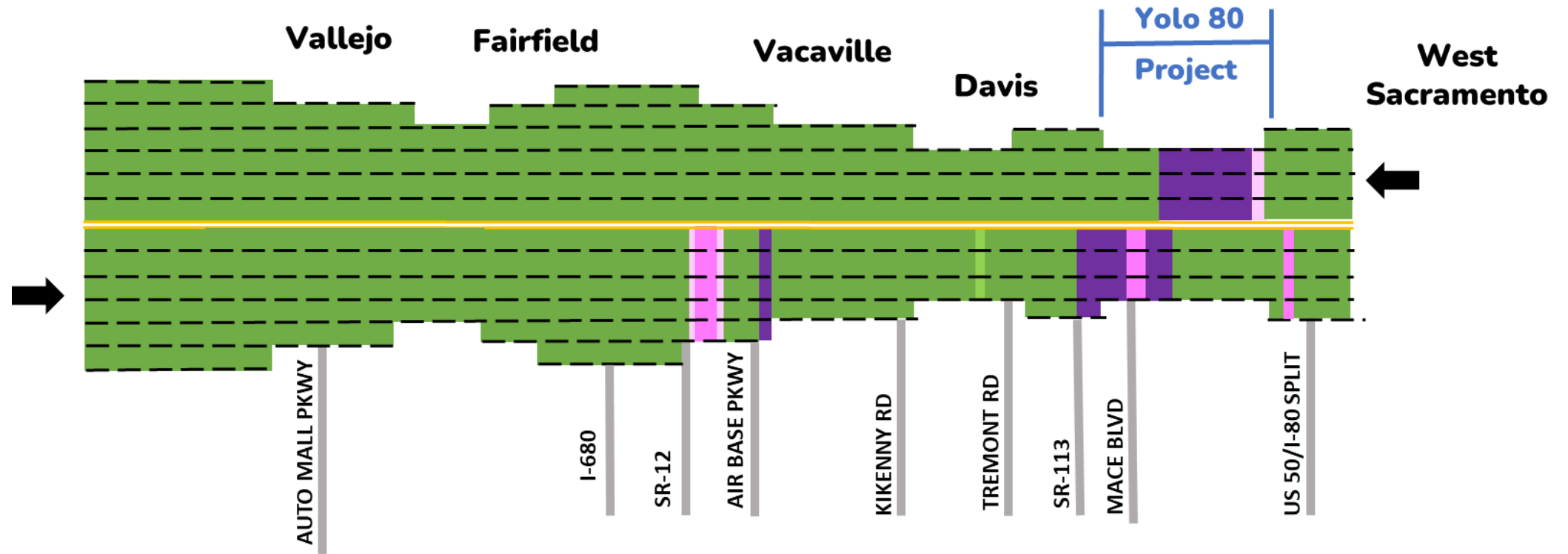
20 June 2025



# Agenda

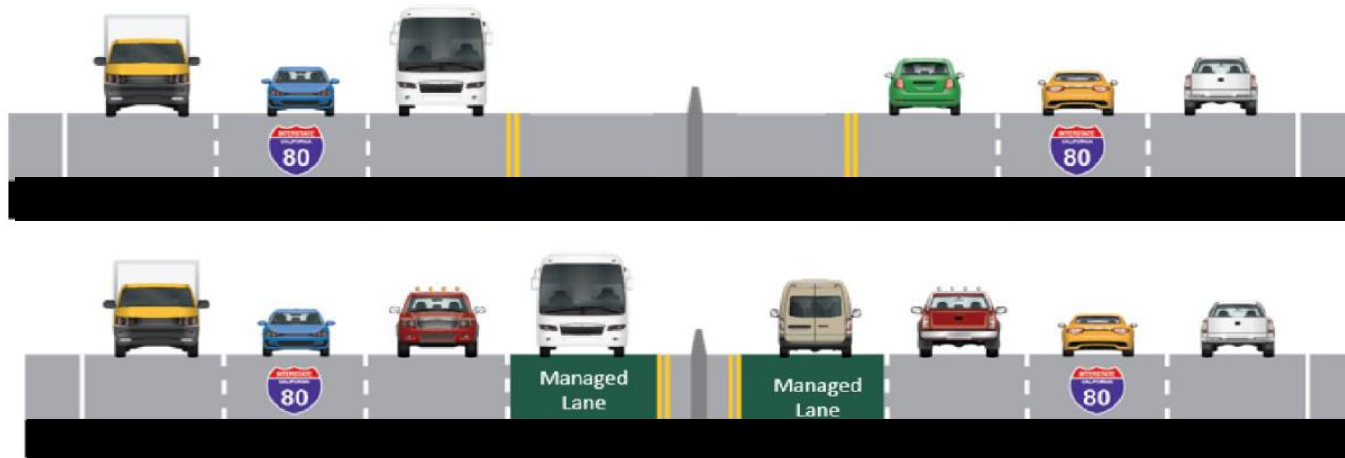
- Yolo 80 Project + VMT Mitigation
- CARTA Overview
- Toll Policy Process
- Questions + Discussion

# Congestion at Yolo Causeway

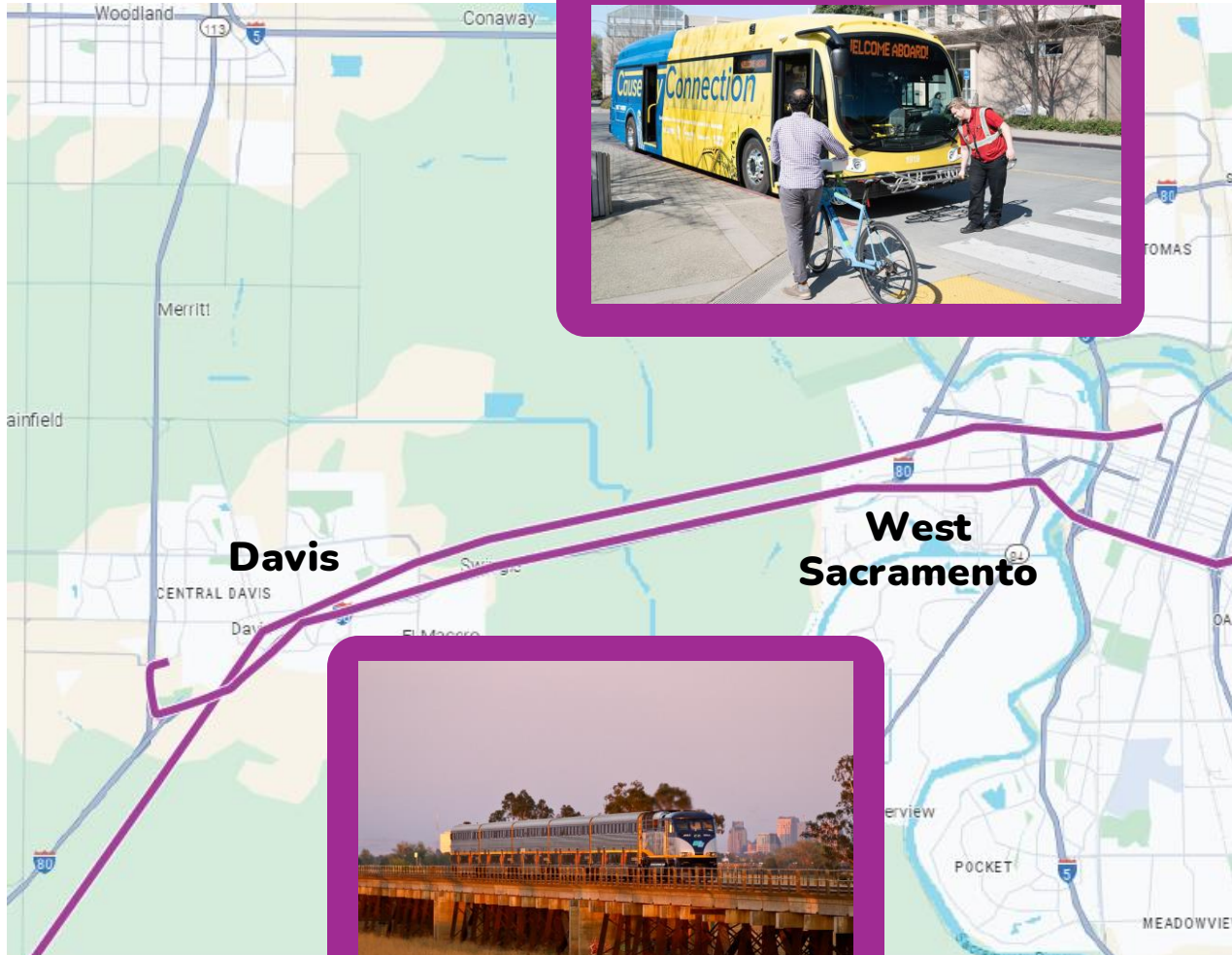


% of Days with Hourly Congestion  
(directional peak hours – Aug 2023)

# Yolo 80 Project



# VMT Mitigation Examples



**3 round trips**

Added daily to  
Capitol Corridor

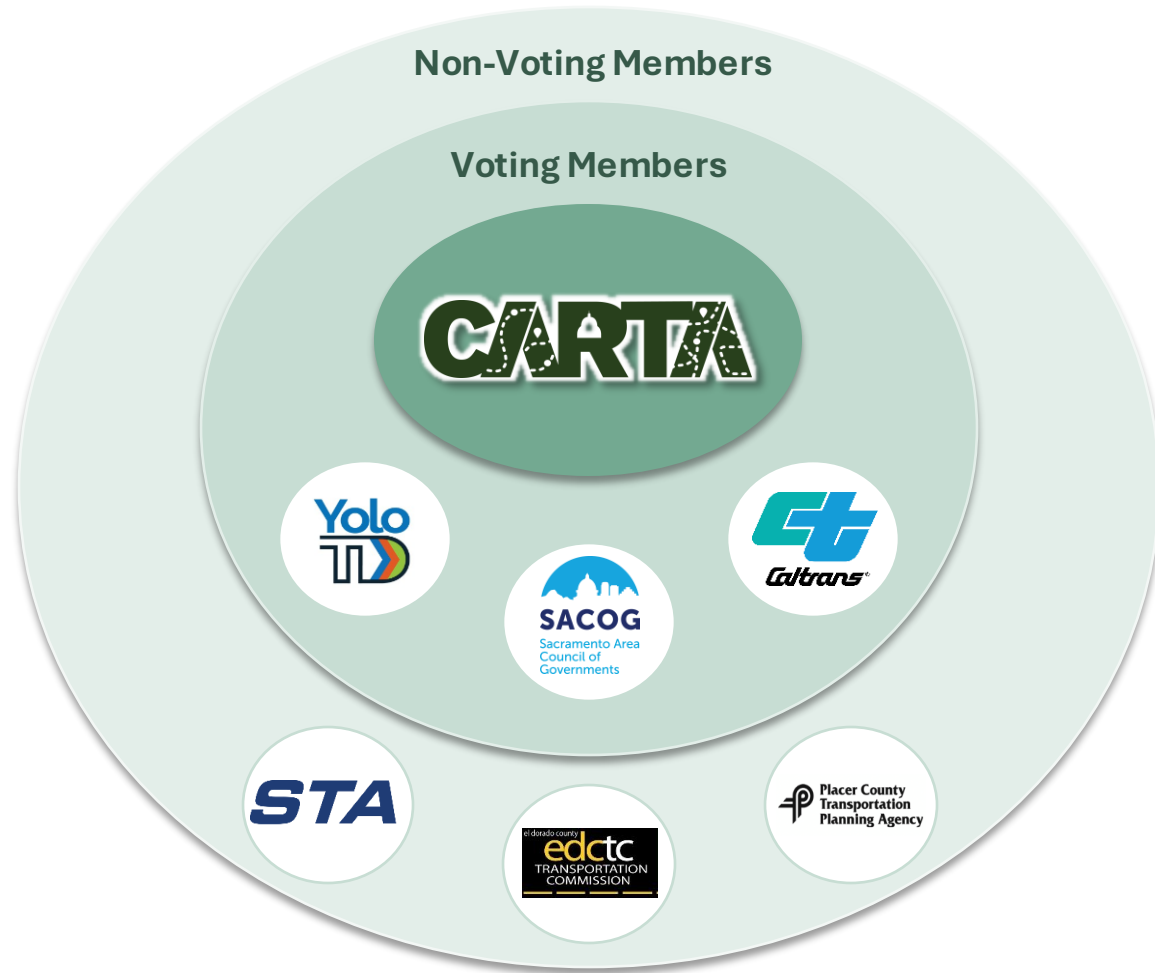
**\$17.3 million**

To increase bus service  
frequency

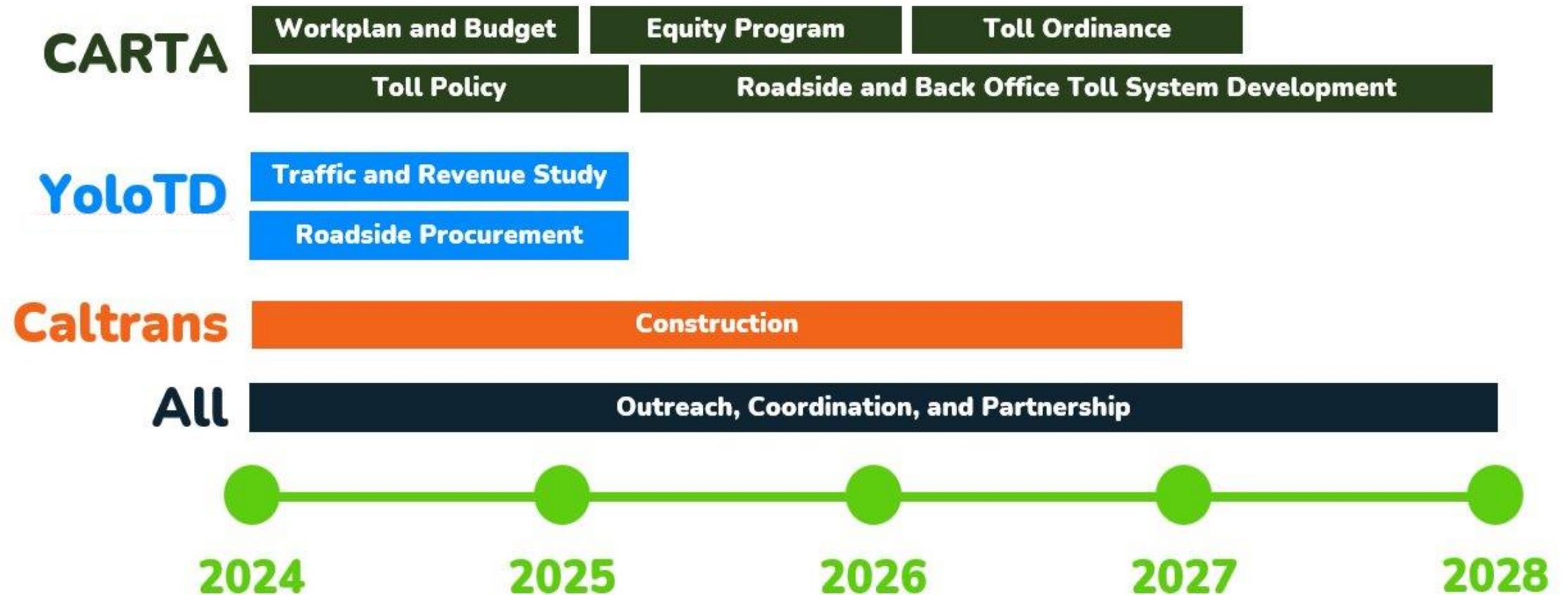
**\$20.7 million**

For transit pass subsidies  
and incentive programs

# CARTA JPA



# CARTA Timeline



# CARTA Policy Approach

Feb - Sept

1. **Discuss:** workshop information item on individual policy issues
2. **Decide:** action item with draft language for individual policy issues

Oct-Dec

3. **Adopt:** Finalize toll policy resolution



# Key Policy Decisions To Date

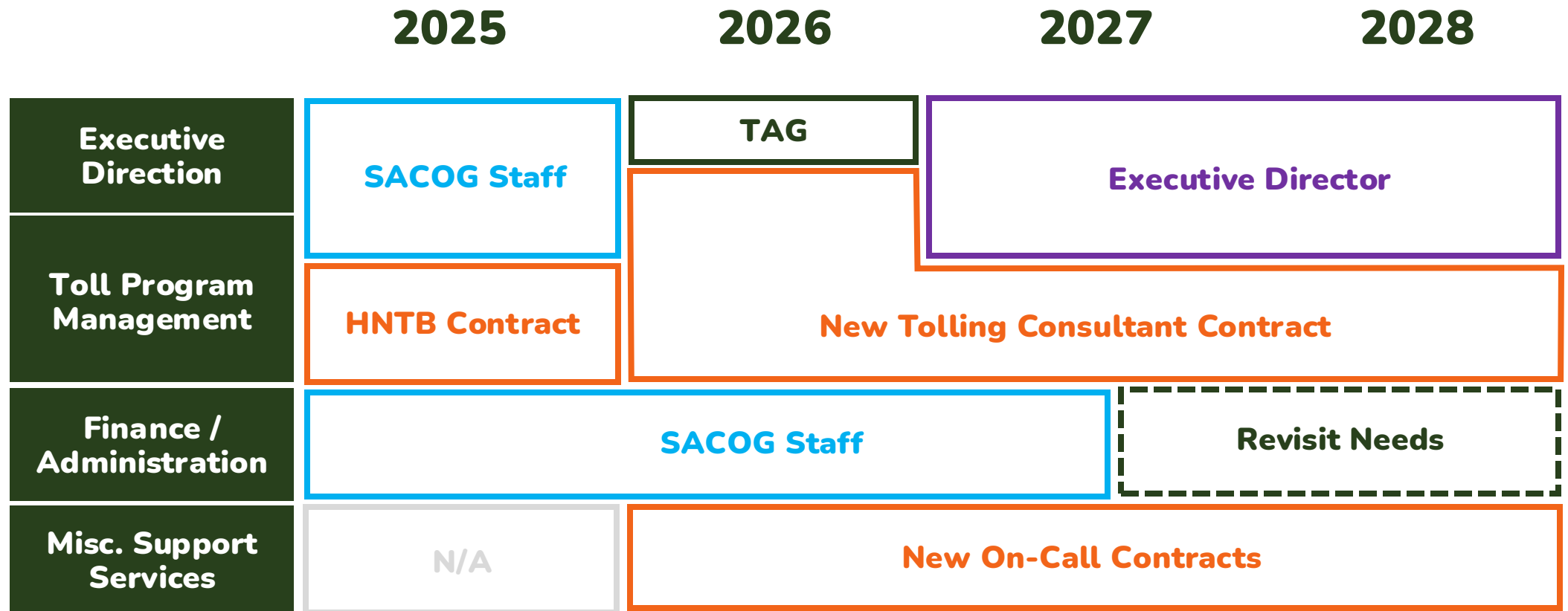
- Contract with an existing Back Office System and Customer Service Center
- Dynamically priced lanes
- Segment-based pricing
- 24/7 Operations (tolling and non-tolling modes)
- FasTrak® Required



**Capital Area Regional Tolling Authority**

[captollauthority.org](http://captollauthority.org) | [kaziz@sacog.org](mailto:kaziz@sacog.org)

# Staffing structure



# CARTA Board with Two Corridors

