

PLAN BAY AREA 2050+



ASSOCIATION OF BAY AREA GOVERNMENTS  
METROPOLITAN TRANSPORTATION COMMISSION

# Plan Bay Area 2050+: Scope, Schedule and Progress To-Date

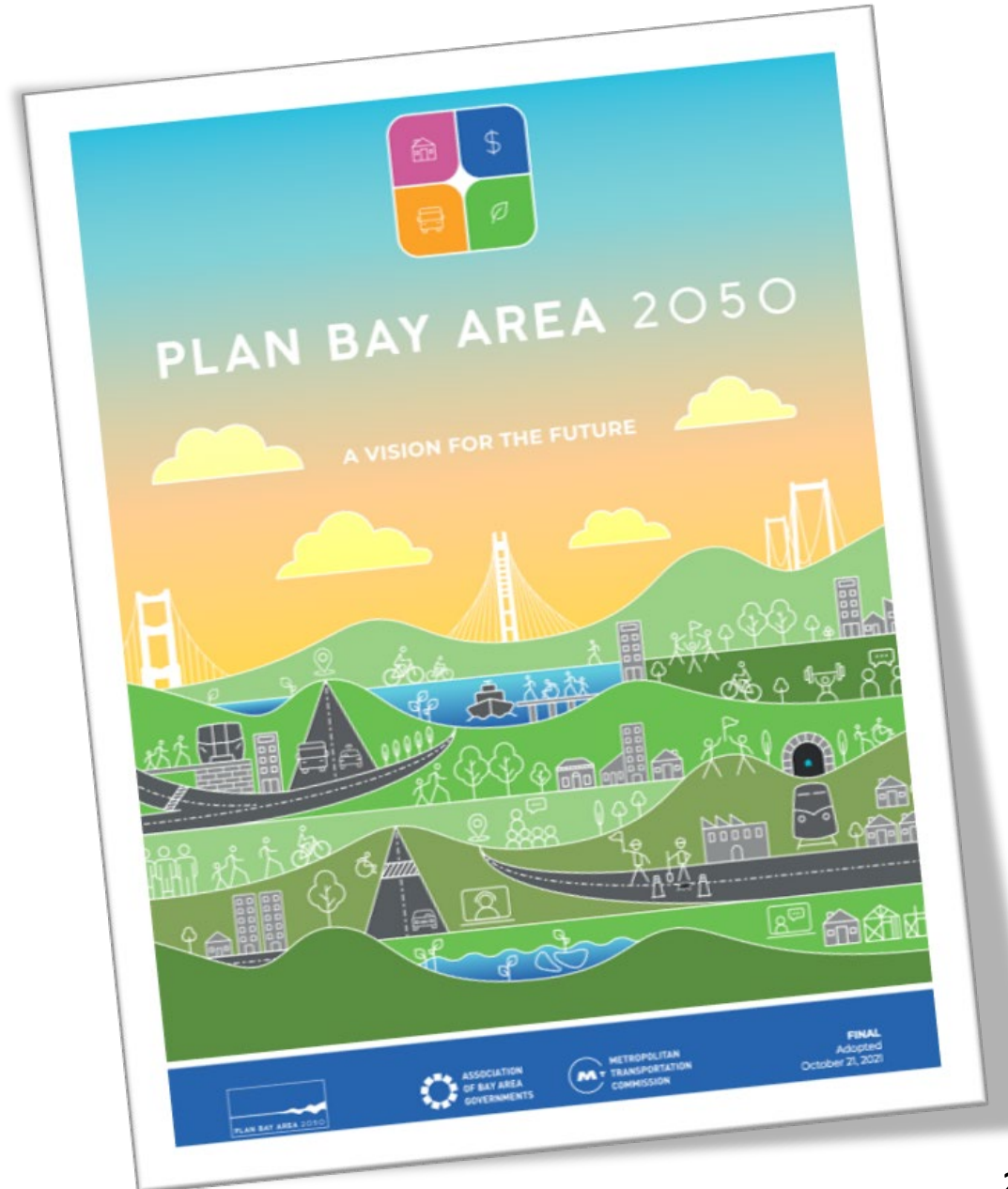
ABAG Executive Board

November 16, 2023 – Chirag Rabari



# Plan Bay Area 2050: Refresher

- Adopted in October 2021, Plan Bay Area 2050 represents the **most comprehensive regional vision to date**, leveraging deep community engagement and a strong commitment to equity when planning for an uncertain future.
- This long-range plan responded to clear direction from policy leaders to be **“bold and unflinching”** in identifying what it would take to address many of the region’s thorniest policy challenges.
- Since adoption, ABAG and MTC have been singularly focused on **advancing plan implementation to achieve regional outcomes.**



# Plan Bay Area 2050+ and Transit 2050+

- Federal and state law require that the plan be **updated every four years**, with the next statutory deadline in **fall 2025**
- Staff are currently advancing two long-range planning efforts in parallel:
  - *Plan Bay Area 2050+*: A **limited and focused update** to the solid foundation of Plan Bay Area 2050, with no concurrent Regional Housing Needs Allocation (RHNA)
  - *Transit 2050+*: A **service-oriented, fiscally-constrained transit network plan** for the Bay Area
- The goal of this presentation is to provide an update on Plan Bay Area 2050+ scope, schedule, and progress to-date, including:
  - **Round 1 public and partner engagement findings**
  - **The draft Regional Growth Forecast and draft Needs and Revenue forecasts**
  - **Potential Draft Blueprint strategy refinements**

## Plan Bay Area 2050+:

Responsible for targeted refinements to the plan's 29 strategies unrelated to transit

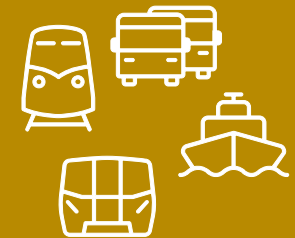
Plan Bay Area 2050+



## Transit 2050+:

Responsible for a comprehensive reimagining of the plan's six transit-oriented strategies

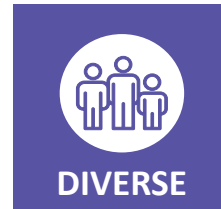
Transit 2050+



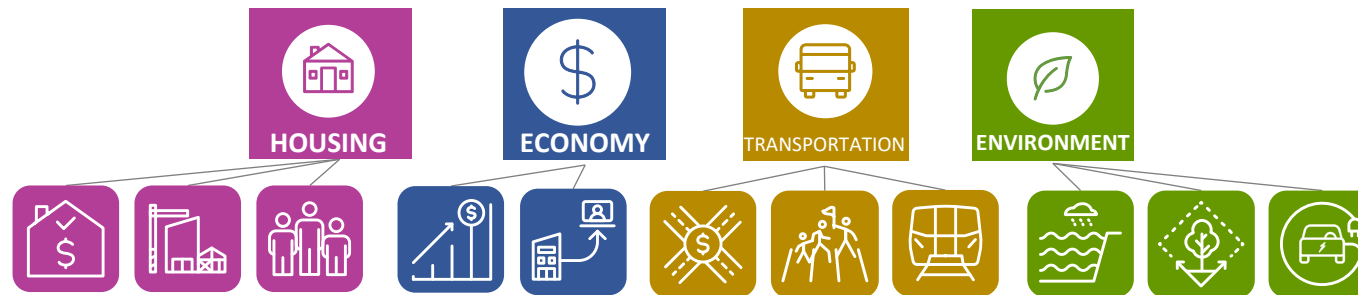
# Plan Bay Area 2050+: Scope

In addition to addressing all federal and state planning requirements,  
Plan Bay Area 2050+ will:

**Leverage the vision and guiding principles established in Plan Bay Area 2050**



**Maintain the long-range plan's existing strategic framework and organization**



**Focus on three core priorities: public information, implementation, and updated assumptions**



# Plan Bay Area 2050+: Themes and Strategies



**Maintain and Optimize the Existing System**



**Create Healthy and Safe Streets**



**Build a Next-Generation Transit Network**



**Protect and Preserve Affordable Housing**



**Spur Housing Production at All Income Levels**



**Create Inclusive Communities**

## Building Upon Plan Bay Area 2050's Themes & Strategies



**Improve Economic Mobility**



**Shift the Location of Jobs**



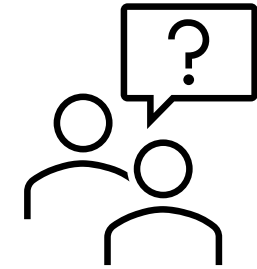
**Reduce Risks from Hazards**



**Expand Access to Parks and Open Space**



**Reduce Climate Emissions**



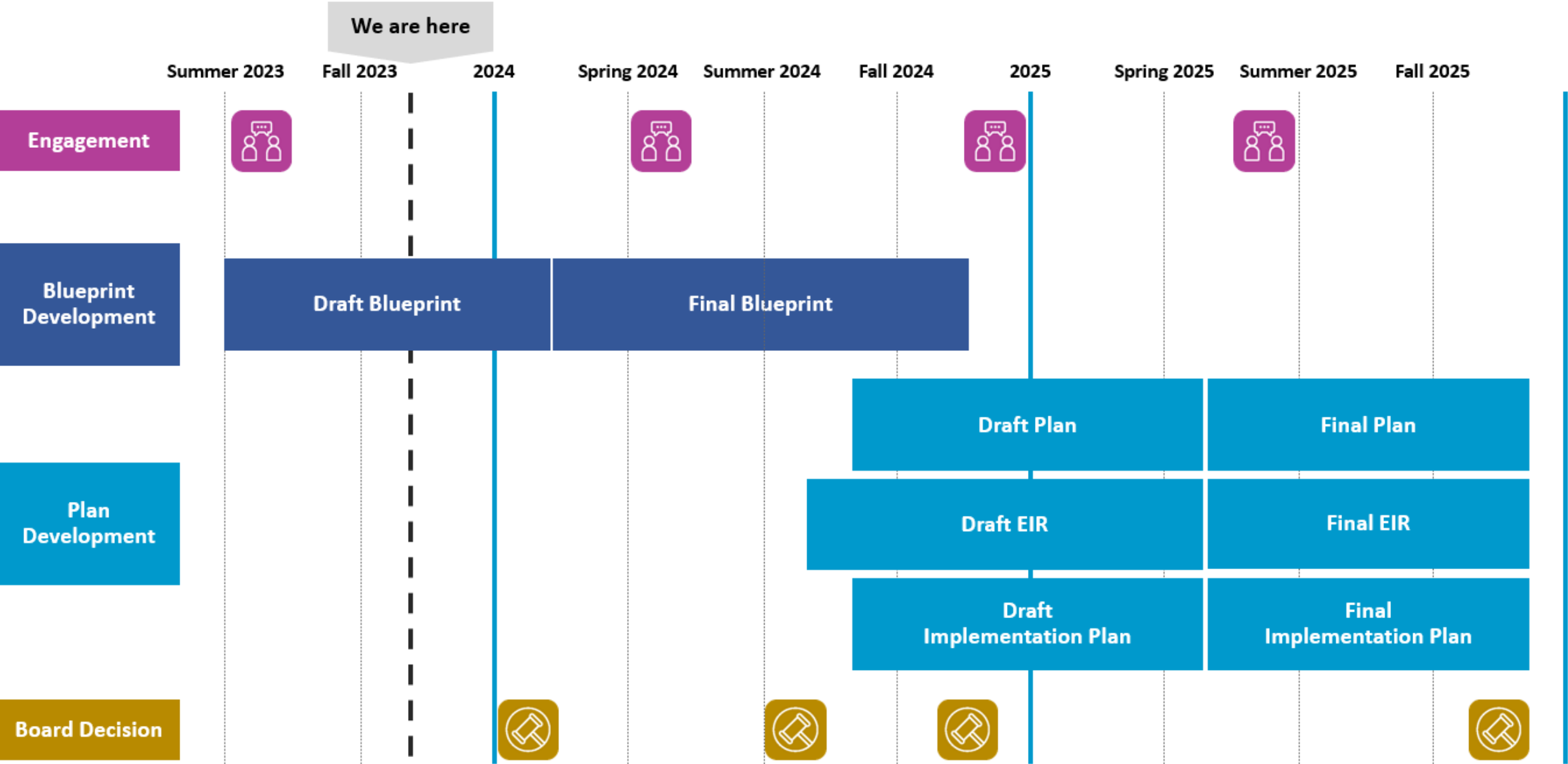
## What is a Strategy?

A strategy is either a public policy or a set of investments that can be implemented in the Bay Area over the next 25 years at the local, regional, or state levels.

Strategies will be linked to near-term implementation actions during the Implementation Plan phase in 2025.

Refer to **Attachment D** for a refresher on the strategies included in Plan Bay Area 2050.

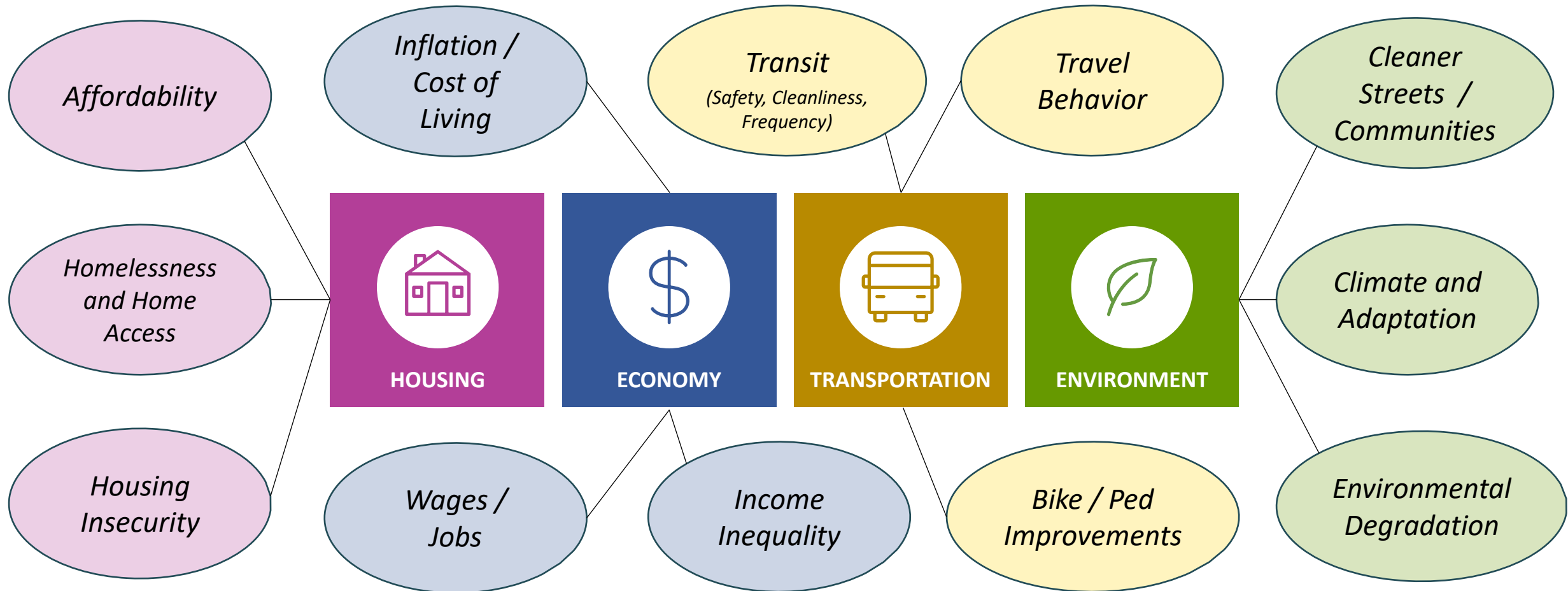
# Plan Bay Area 2050+: Schedule



Refer to **Attachment B** for a more detailed project timeline.

# Public Engagement: Round 1 Key Themes

Round 1 activities generated over 16,000 public comments and engaged hundreds of partner organizations through pop-up public workshops, online surveys, virtual stakeholder events, CBO partnerships, and more.



# Plan Bay Area 2050+: Draft Regional Growth Forecast



## **Population:**

Moderately lower population growth, driven by COVID-19 slowdown and declining fertility + U.S. immigration



## **Jobs:**

Mostly unchanged jobs picture, driven by a strong national economy and a continued competitive Bay Area economy



## **Households and Age:**

With an aging population comes declining average household size, as older populations tend to have smaller households



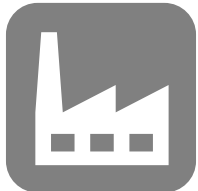
## **Racial/Ethnic Diversity:**

Bay Area population continues to diversify, driven by both migration and fertility dynamics



## **Income:**

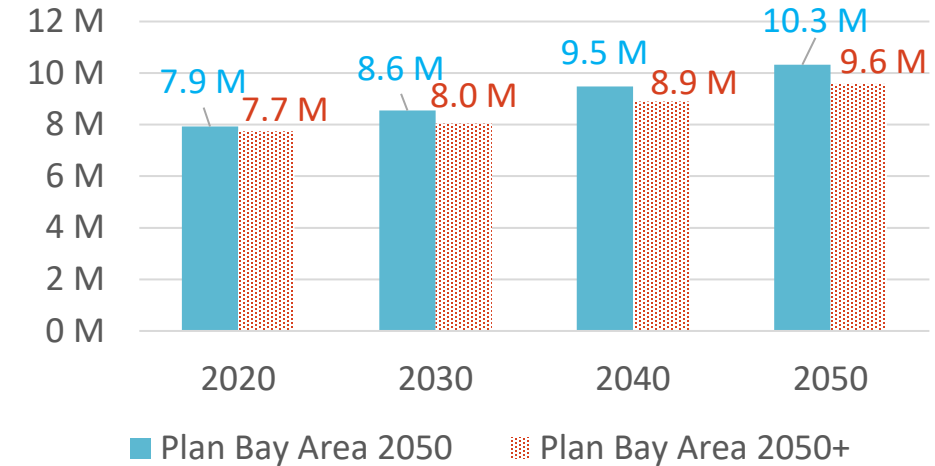
A continued shrinkage of the middle class, offset by increases in both high- and low-income populations



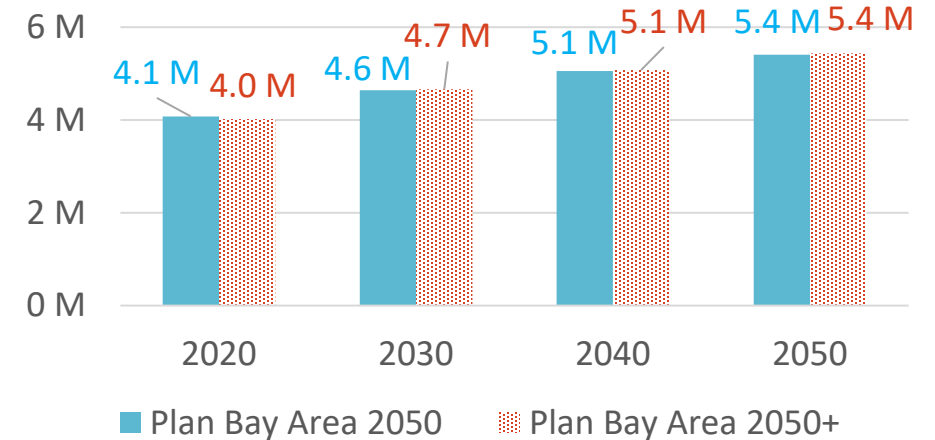
## **Industry Composition:**

The region will continue to be a center for innovation, technology, and high-value services and industries

### Population



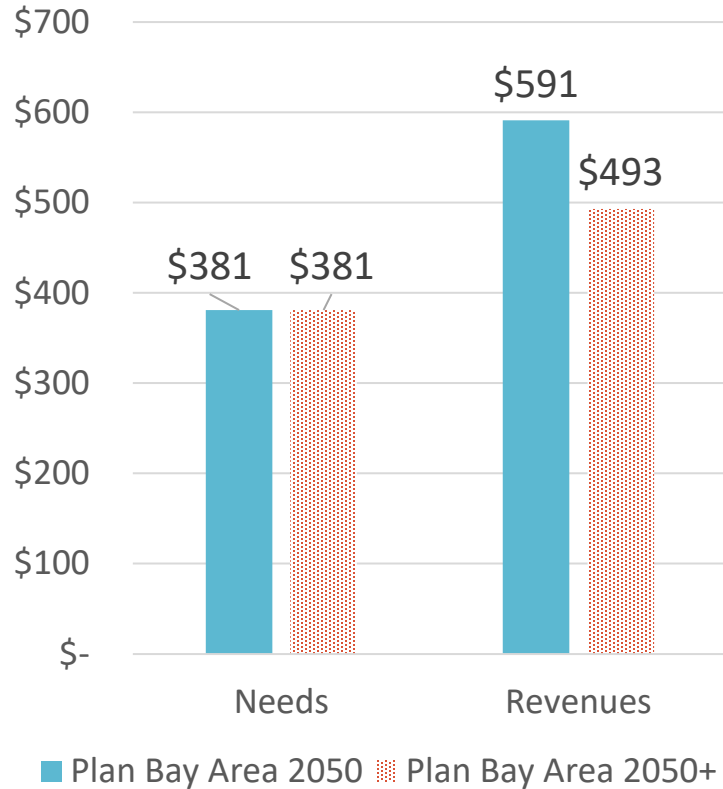
### Employment





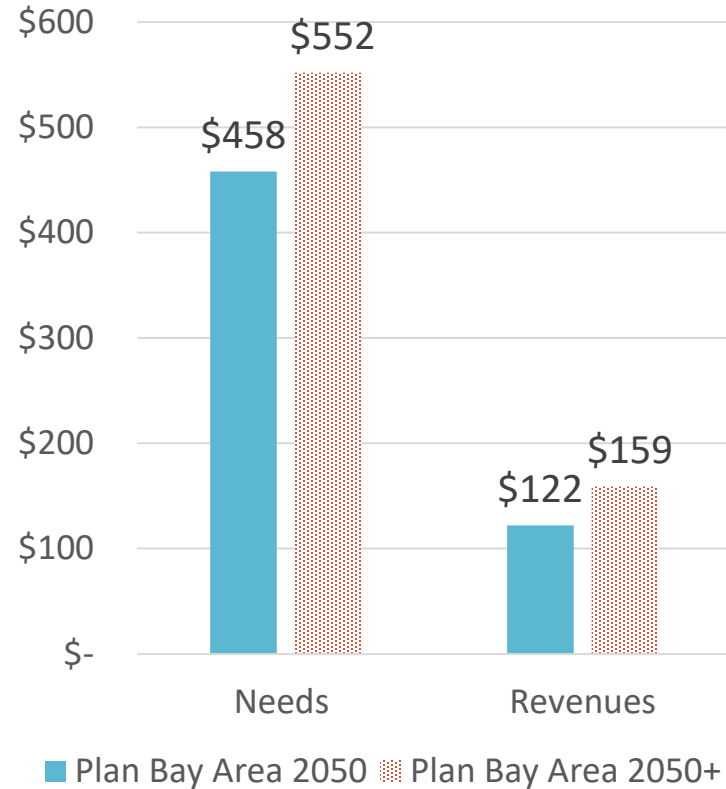
# Plan Bay Area 2050+: Financial Challenges

Draft Transportation Needs & Revenues (\$ in billions)



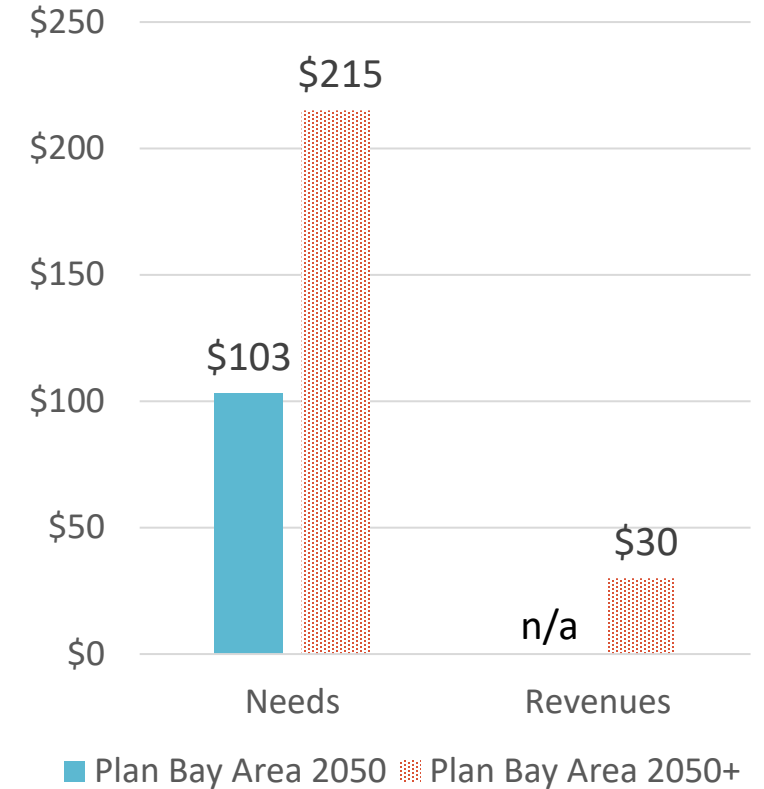
**Transportation revenues decrease by \$98 billion, despite similar level of needs to operate and maintain the system.** This leaves significantly less funding for remaining transportation strategies and associated projects.

Draft Housing Needs & Revenues (\$ in billions)



**Housing needs increase by \$97 billion, despite only \$37 billion in revenue increase.** This indicates a significant financial gap that requires federal, state, regional, and local monies to provide sufficient affordable housing for all.

Draft Environment Needs & Revenues (\$ in billions)



**Environment needs increase by \$112 billion, far exceeding the available revenues.** This indicates a significant financial gap that requires federal, state, regional, and local monies to advance environmental goals.

# Proposed Strategy Refinements (1 of 2)

Engagement Theme  
(from summer '23)

Proposed Refinements and [Relevant Implementation Efforts](#)

**Improve transit safety, cleanliness, and frequency**

Undertake a more comprehensive update to transit strategies via the parallel Transit 2050+ effort to support connectivity, ridership recovery, system reliability, and more. Recommendations will be integrated during Plan Bay Area 2050+ Final Blueprint phase in mid-2024.

**Ensure equitable pricing strategies and reduce driving demand**

Propose refinements to per-mile freeway tolling strategy (Strategy T5) with expanded equity considerations. Weave together the plan's existing pricing strategies with a refreshed approach, while also considering expanding the strategy to include a new regional mileage-based user fee.

- [Express Lanes START, Clipper® START and Clipper® BayPass](#)
- [Next Generation Freeways Study](#)

**Encourage safe active transportation**

Propose refinements to Strategy T8 and T9 to enhance access and safety on the High Injury and Regional Active Transportation Networks using design. Stakeholders also highlighted the need to protect key community spaces, especially schools & senior centers.

- [Regional Active Transportation Plan and Active Transportation Network](#)
- [Complete Streets Policy](#)



Photo: rawpixel



Photo: San Francisco Bike Coalition`

Refer to **Attachment D** for more information on proposed strategy refinements.

# Proposed Strategy Refinements (2 of 2)

Engagement Theme (*from summer '23*)

## Proposed Refinements and Relevant Implementation Efforts

**Remove local policy barriers to building housing and support innovation**

Integrate areas subject to the Transit-Oriented Communities Policy as part of minor refresh to Growth Geographies (Strategy H3). Refine affordable housing production strategies (Strategies H4, H5, H6, H8) to integrate innovative construction & finance models and Priority Sites.

- [Transit-Oriented Communities Policy](#)
- [Priority Development Area Program](#)
- [BAHFA Pilot Programs](#)

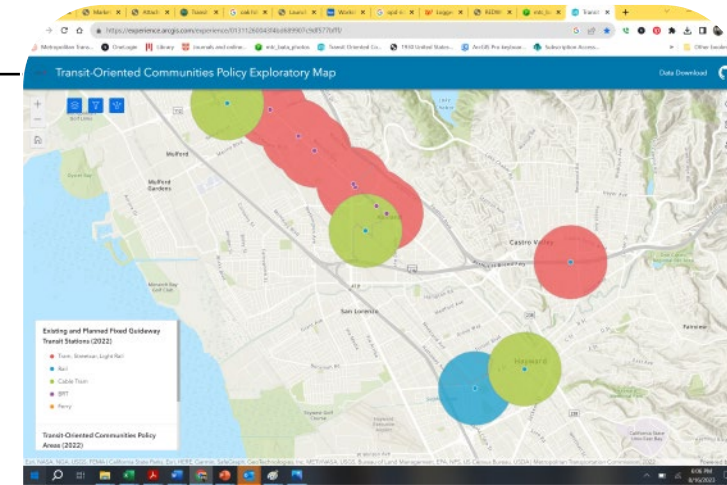


Photo: MTC Photo Library

**Do more to reduce greenhouse gas emissions**

Propose targeted expansion for building decarbonization (Strategy EN3), electric vehicles (Strategy EN8), and transportation demand management programs (Strategy EN9). Consider integrating e-bikes into approach for Strategy EN8.

- [MTC Climate Initiative Grant Programs](#)
- [BayREN Strategic Business Plan](#)



Photo: Karl Nielsen, Fagan Marsh State Marine Park

**Do more to adapt to climate change impacts**

Propose a significant expansion to address sea level rise with updated cost assumptions (Strategy EN1) and expand urban greening efforts with more tree canopy (Strategy EN6).

- [MTC/BCDC Sea Level Rise Adaptation Funding & Investment Framework](#)
- [MTC/ABAG Priority Conservation Area Refresh](#)

Refer to **Attachment D** for more information on proposed strategy refinements.





PLAN BAY AREA 2050+



ASSOCIATION OF BAY AREA GOVERNMENTS  
METROPOLITAN TRANSPORTATION COMMISSION

# Next Steps

**January 2024:** Seek Approval of Draft Blueprint Strategies at the Joint MTC Planning with the ABAG Administrative Committee

**Winter/Spring 2024:** Analysis of Draft Blueprint Performance & Equity Outcomes

**Spring 2024:** Round 2 of Public & Stakeholder Engagement

## Contact Information:

Chirag Rabari – [crabari@bayareametro.gov](mailto:crabari@bayareametro.gov) – Plan Bay Area 2050+ Project Manager