

PLAN BAY AREA 2050+



ASSOCIATION OF BAY AREA GOVERNMENTS  
METROPOLITAN TRANSPORTATION COMMISSION

# Plan Bay Area 2050+: Scope and Schedule

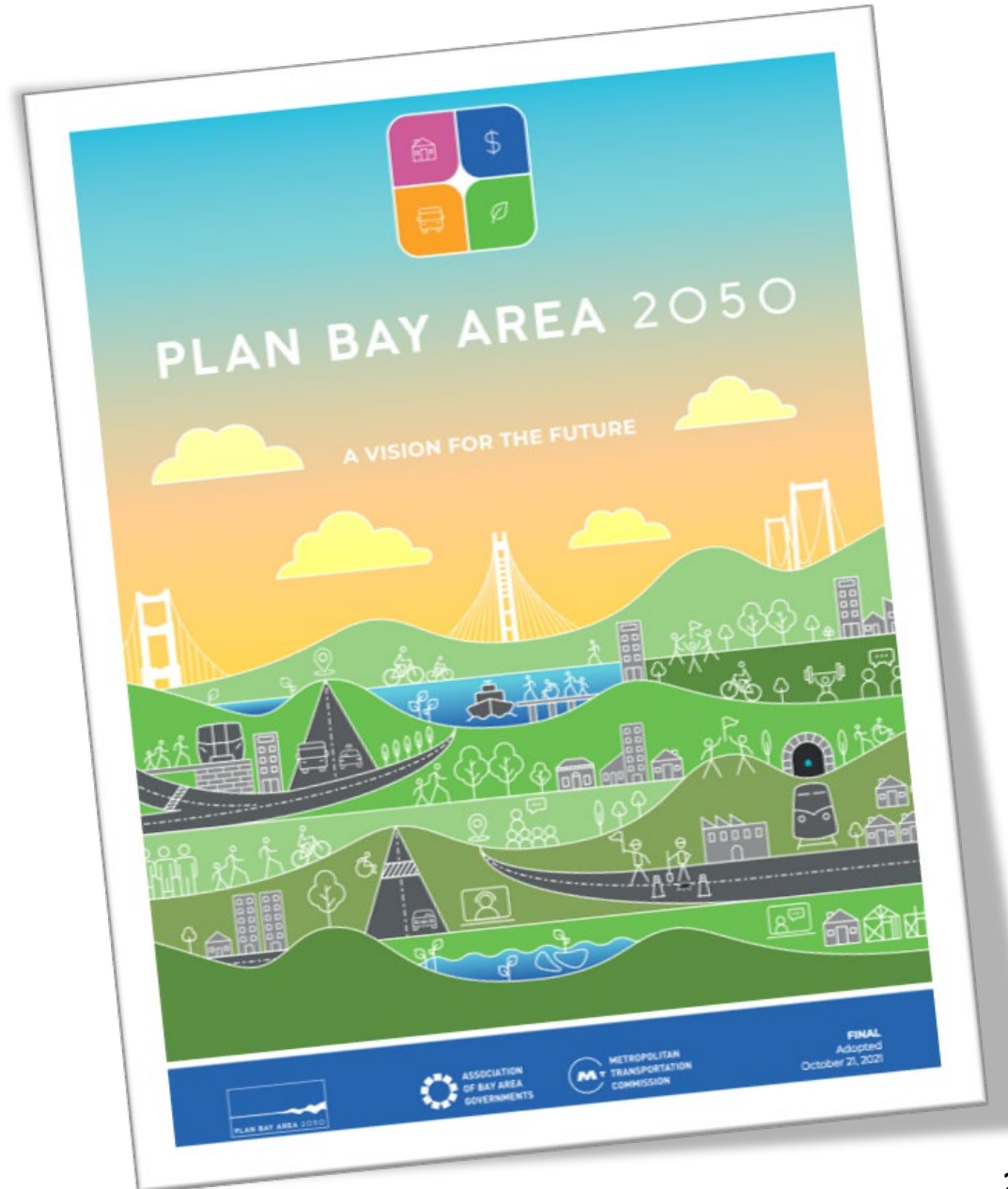
MTC Policy Advisory Council

July 28, 2023



# Plan Bay Area 2050: Refresher

- Adopted in October 2021, Plan Bay Area 2050 represents the **most comprehensive regional vision to date**, leveraging deep community engagement and a strong commitment to equity when planning for an uncertain future.
- This long-range plan responded to clear direction from policy leaders to be **“bold and unflinching”** in identifying what it would take to address many of the region’s thorniest policy challenges.
- Since adoption, ABAG and MTC have been singularly focused on **advancing plan implementation to achieve regional outcomes.**



# Plan Bay Area 2050+ and Transit 2050+

- Federal and state law require that the plan be **updated every four years**, with the next statutory deadline in **fall 2025**
- In December 2022, staff proposed advancing two long-range planning efforts in parallel:
  - *Plan Bay Area 2050+*: A **limited and focused update** to the solid foundation of Plan Bay Area 2050, with no required Regional Housing Needs Allocation (RHNA) process
  - *Transit 2050+*: A **service-oriented, fiscally-constrained transit network plan** for the nine-county Bay Area
- Plan Bay Area 2050 envisioned a robust, connected transit network, but the rapid change in commute patterns and reduction in anticipated revenue requires a comprehensive update via Transit 2050+

## Plan Bay Area 2050+:

Responsible for targeted refinements to the plan's 29 strategies unrelated to transit

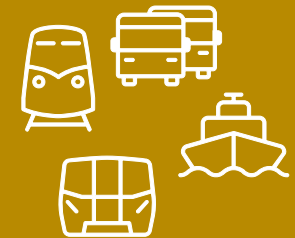
Plan Bay Area 2050+



## Transit 2050+:

Responsible for a comprehensive reimagining of the plan's six transit-oriented strategies

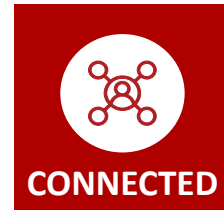
Transit 2050+



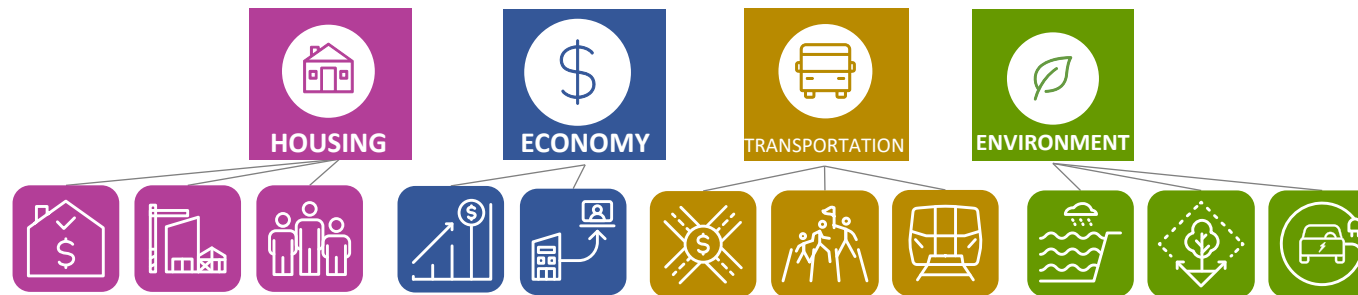
# Plan Bay Area 2050+: Scope

In addition to addressing all federal and state planning requirements,  
Plan Bay Area 2050+ will:

Leverage the vision and guiding principles established in Plan Bay Area 2050



Maintain the long-range plan's existing strategic framework and organization



Focus on three core priorities: education, implementation, and updated assumptions



# Key Priorities for a Limited and Focused Update



Image Source: MidPen Housing



Image Source: Noah Berger



Image Source: Clipper



Image Source: Peter Beeler



Image Source: Karl Nielsen

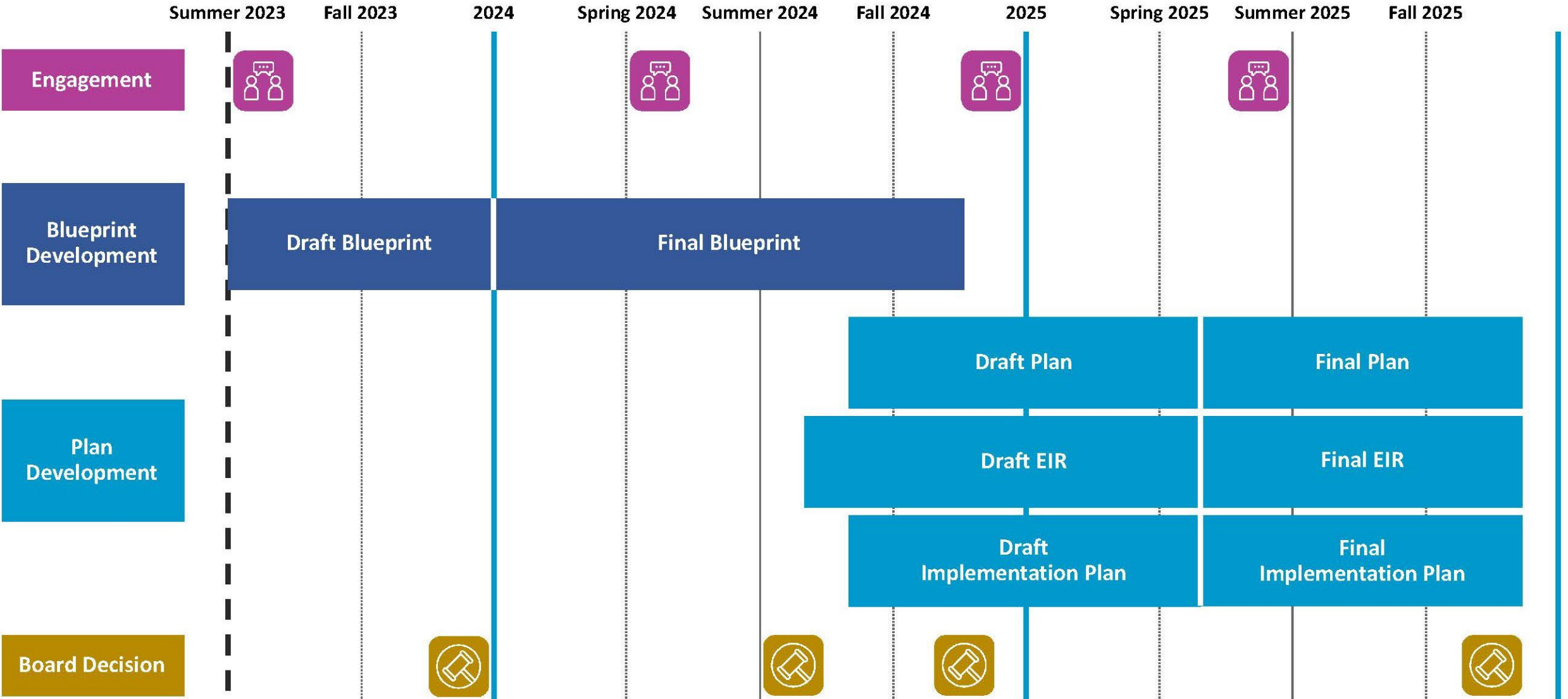


Image Source: Karl Nielsen

Education	Implementation	Updated Assumptions
<ul style="list-style-type: none"> <li>• Provide the public with more background information on who we are, what we do, and why</li> </ul>	<ul style="list-style-type: none"> <li>• Continue implementation of initiatives that will drive regional outcomes</li> </ul>	<ul style="list-style-type: none"> <li>• Update the plan's technical and planning assumptions to better reflect the post-COVID environment</li> </ul>
<ul style="list-style-type: none"> <li>• Focus Plan Bay Area 2050+ education efforts on the purpose, strategies, and real-world impact of the long-range plan</li> </ul>	<ul style="list-style-type: none"> <li>• Lean on high-profile implementation efforts to inform refinements to select plan strategies</li> </ul>	<ul style="list-style-type: none"> <li>• Focus on financial forecasts, the regional economy, demographics, and areas likely to impact plan outcomes</li> </ul>

# Plan Bay Area 2050+: Schedule

We are here



For a more detailed project schedule, please see Attachment A

# Plan Bay Area 2050+: Next Steps

- A **first round of public engagement** – including pop-ups, workshops, webinars, and a survey – will take place over **summer 2023**.
- Staff will provide **updates to committees** on a variety of topics over the course of 2023, including:
  - Draft Core Planning Assumptions (*September 2023 – Information*)
  - Anticipated Draft Blueprint Refinements (*October 2023 – Information*)
  - Round 1 Public Engagement Findings (*November 2023 – Information*)
  - Draft Blueprint Strategy Adoption (*December 2023 - Action*)



An individual participating at an event in Oakland. Credit: Noah Berger

An aerial photograph of a suburban neighborhood featuring a network of canals and numerous houses. The houses are mostly two-story structures with varying roof colors and styles. The canals are filled with water, and some have small boats or docks. The overall scene is a typical suburban waterway community.

PLAN BAY AREA 2050 +

# Questions or Comments?

Chirag Rabari – [crabari@bayareametro.gov](mailto:crabari@bayareametro.gov)

Plan Bay Area 2050+ Project Manager