

State Coastal Conservancy (SCC) Project Recommendations

October 4, 2021



Agenda

- Overview of Block Grant 6 Grant Recommendations
- Overview of Severely Disadvantaged Communities and the Bay Trail
- Staff Recommended Projects

Overview of Block Grant 6 Grant Recommendations

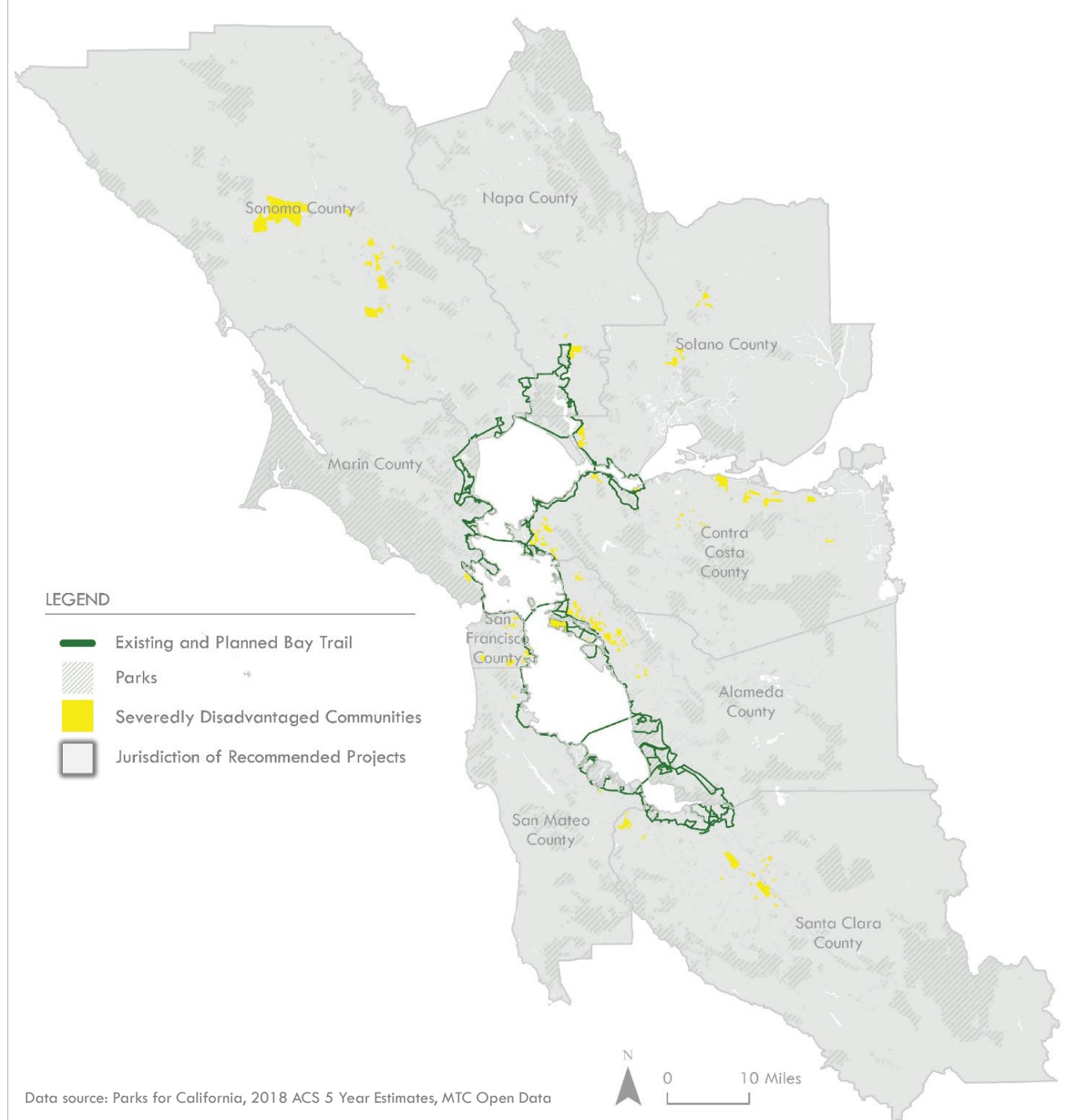
Definition:

SDAC: Census block-groups with a Median Household Income less than 60% of California MHI (\$42,737)

Funding Available:

\$955,000 dedicated for SDAC Projects

\$445,000 open for Non-SDAC Projects

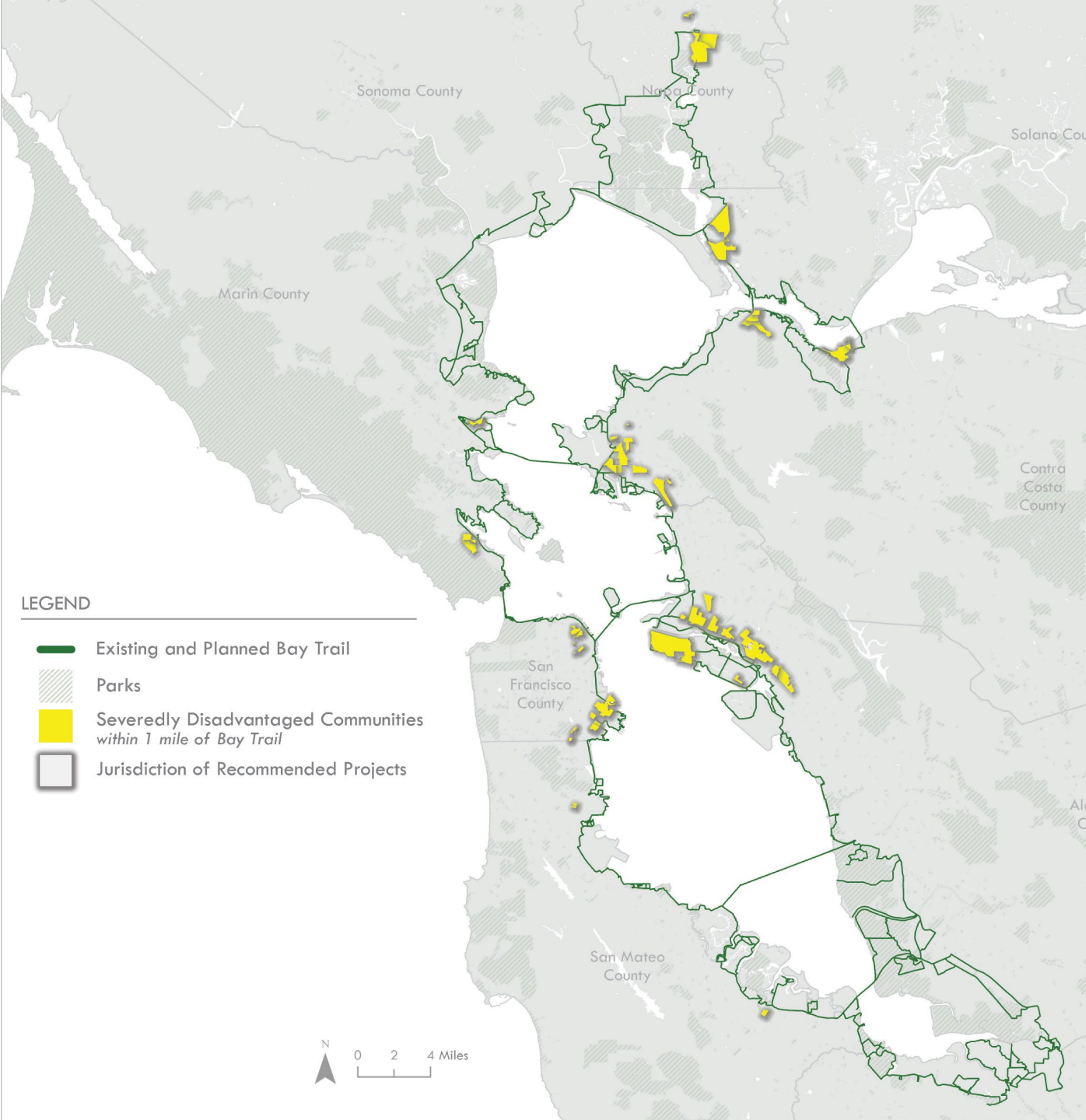
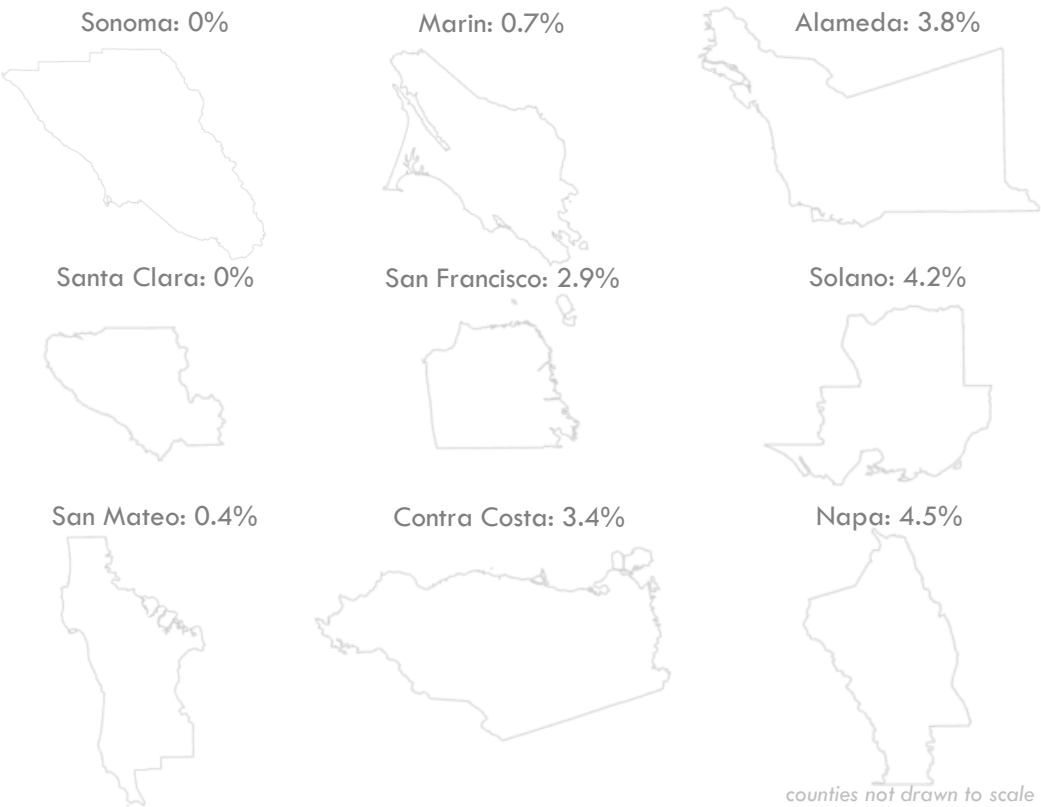


Severely Disadvantaged Communities within 1 Mile of the Bay Trail

SDAC:

2.4% of the Bay Trail is within 1 mile of an SDAC (existing and planned)

Varies by County



SCC Project Recommendations

LEGEND

- Recommended Projects
- Existing Bay Trail
- Planned Bay Trail
- Parks
- Severely Disadvantaged Communities
- Jurisdiction of Recommended Projects

Bay Trail Extension on Grand Avenue

Applicant: City of San Rafael
Length: 0.04 miles
Funds Requested: \$240,000
SDAC: Yes

Bridgeway Bike Lane Project

Applicant: City of Sausalito
Length: 0.4 miles
Funds Requested: \$67,214
SDAC: No

Richmond - Point Polate Bay Trail

Applicant: City of Richmond
Length: 1.25 miles
Funds Requested: \$150,000
SDAC: No

EBRPD - Point Molate Bay Trail

Applicant: East Bay Regional Park District
Length: 1.25 miles
Funds Requested: \$150,000
SDAC: No

Bay Trail/Vine Trail Gap Closure Project

Applicant: Solano Transportation Authority
Length: 3.7 miles
Funds Requested: \$400,000
SDAC: Yes

Martinez Bay Trail - Phase II

Applicant: East Bay Regional Park District
Length: 0.5 miles
Funds Requested: \$200,000
SDAC: Yes



Martinez Bay Trail – Phase II

East Bay Regional Park District



Location: City of Martinez. Nejedly Staging Area to Berrellessa Street along the Union Pacific Railroad Corridor

Project Details: Construct a paved, Class I, shared-use path.

Length: 0.50 miles

Funds Requested: \$200,000

Total Project Cost: \$3,500,000

SDAC: Yes

Grant Type: Construction

Environmental Clearance: Mitigated Negative Declaration Addendum



Bay Trail/Vine Trail Gap Closure Project

Solano Transportation Authority



Location: City of Vallejo. Wilson Avenue, Sacramento Street, Enterprise Street, Lewis Brown Drive, Broadway Street, Sonoma Boulevard, Meadows Drive, Catalina Way

Project Details: Construct a series of Class I, II, and IV bikeways along with pedestrian improvements along 3.7 miles of Bay Trail stretching from Wilson Avenue to Catalina Way

Length: 3.70 miles

Funds Requested: \$400,000

Total Project Cost: \$8,728,000

SDAC: Yes

Grant Type: Construction

Environmental Clearance: Categorical Exemption



Bay Trail Extension on Grand Avenue

City of San Rafael



Location: Grand Avenue between Second and Third Streets

Project Details: Construct a Class IV Bikeway along Grand Avenue

Length: 0.04 miles

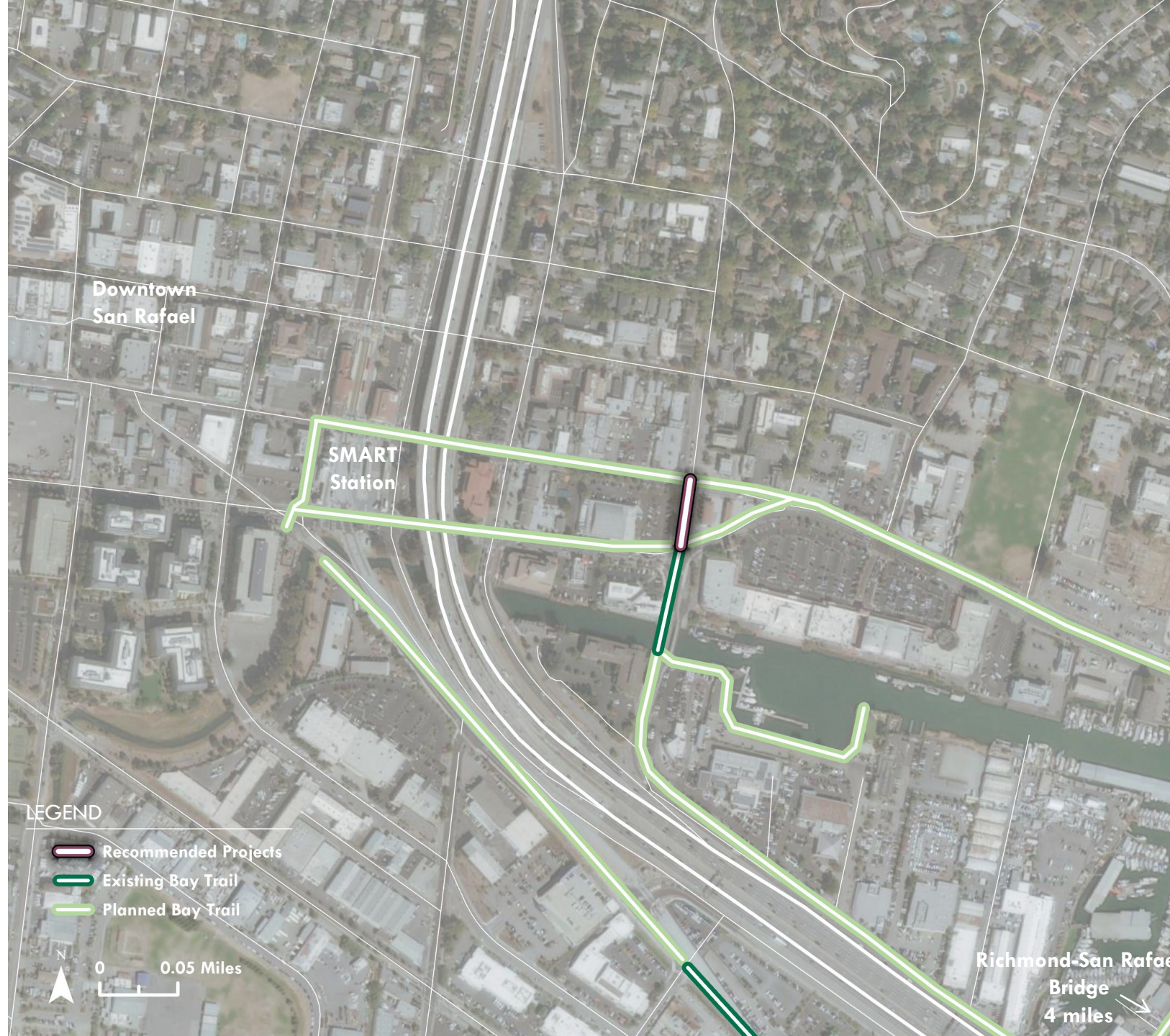
Funds Requested: \$240,000

Total Project Cost: \$370,000

SDAC: Yes

Grant Type: Construction

Environmental Clearance: Categorical Exemption



Bridgeway Bike Lane Project

City of Sausalito



Location: Bridgeway Boulevard between Princess and Richardson

Project Details: Develop plans and cost estimates for:

- one-direction, Class II Bicycle Lane for southbound travel and
- one-direction, Class IV Bikeway for northbound bicycle travel on Bridgeway Blvd.

Length: 0.40 miles

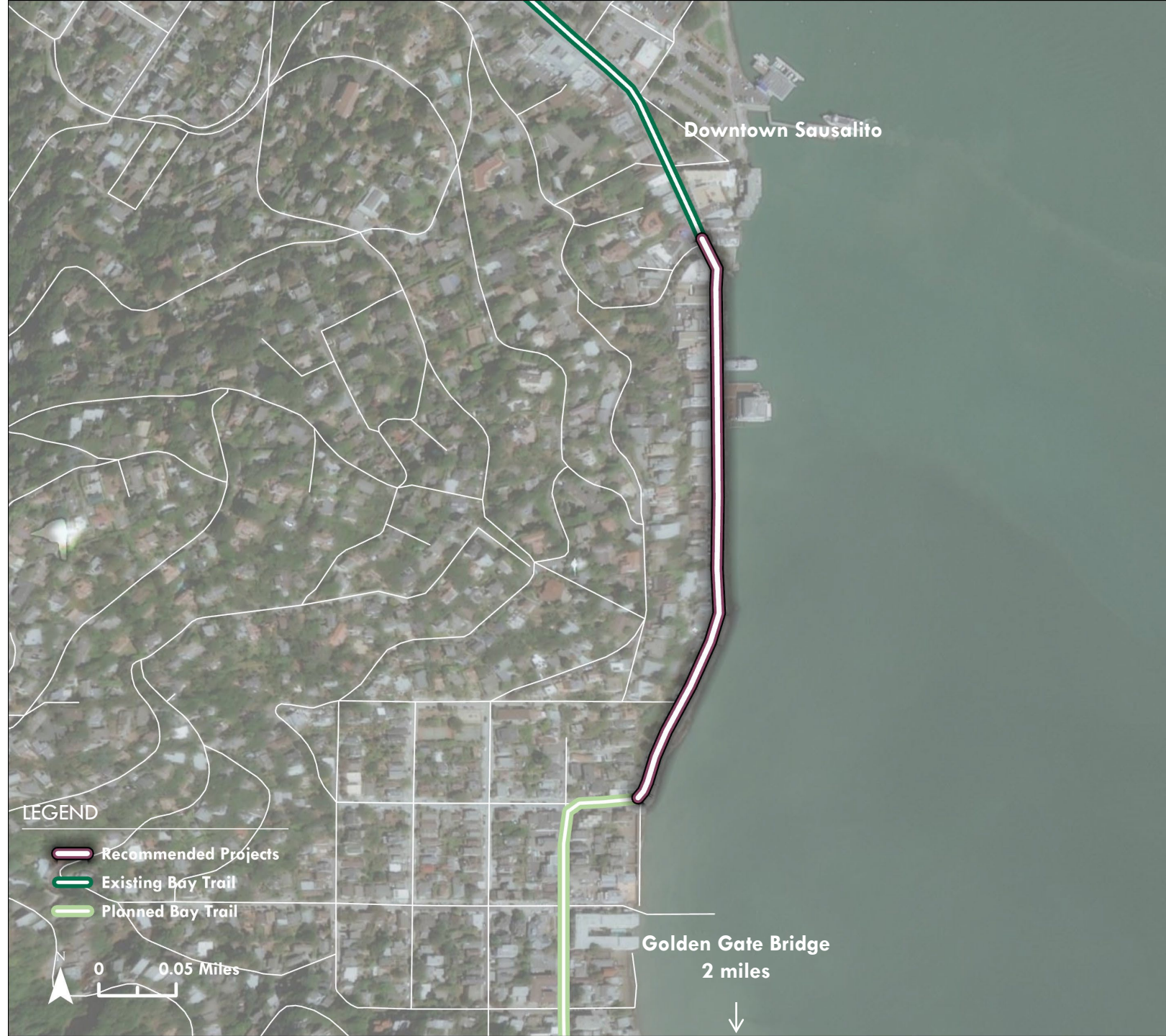
Funds Requested: \$67,214

Total Project Cost: \$77,214

SDAC: No

Grant Type: Design

Environmental Clearance: N/A



Richmond-Point Molate Bay Trail

City of Richmond



Location: City of Richmond. Point Molate from Point Molate Beach halfway to Richmond-San Rafael Bridge Trail

Project Details: Construct a paved, Class I, shared-use path that will be 10-feet-wide with 5-foot shoulders.

Length: 1.25 miles

Funds Requested: \$150,000

Total Project Cost: \$3,150,000

SDAC: No

Grant Type: Construction

Environmental Clearance: Mitigated Negative Declaration



EBRPD-Point Molate Bay Trail

East Bay Regional Park District



Location: City of Richmond. Point Molate from the Richmond- San Rafael Bridge Trail landing running halfway to Point Molate Beach Park

Project Description: Construct a paved, Class I, shared-use path that will be 10-feet-wide with 5-foot shoulders.

Length: 1.25 miles

Funds Requested: \$150,000

Total Project Cost: \$5,513,290

SDAC: No

Grant Type: Construction

Environmental Clearance: Mitigated Negative Declaration



Questions:

Lee Huo

lhuo@bayareametro.gov

Laura Krull

lkrull@bayareametro.gov

