



Estuary Blueprint Update ABAG Executive Board Meeting September 16, 2021



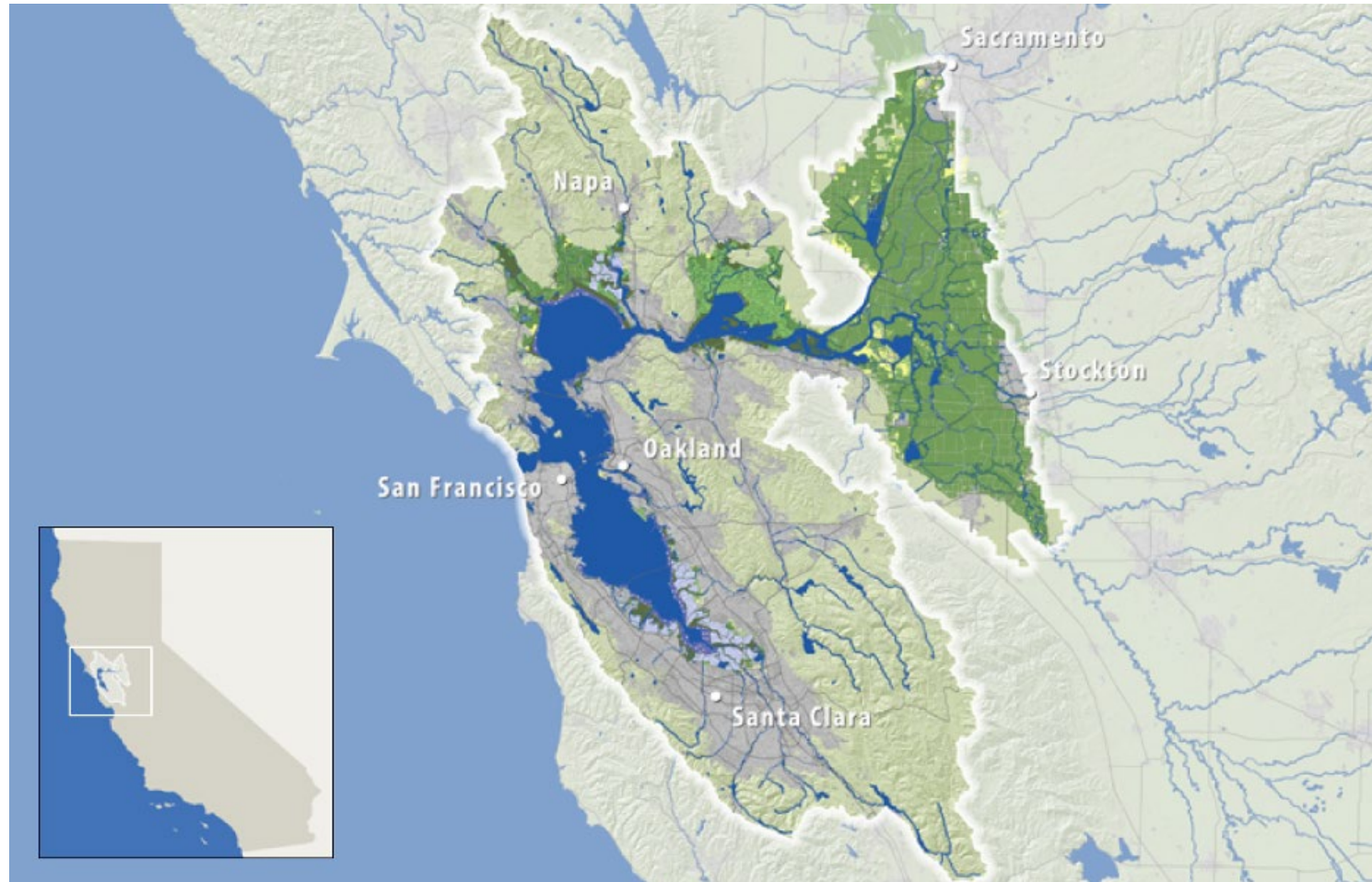
San Francisco
ESTUARY PARTNERSHIP

San Francisco Estuary Partnership

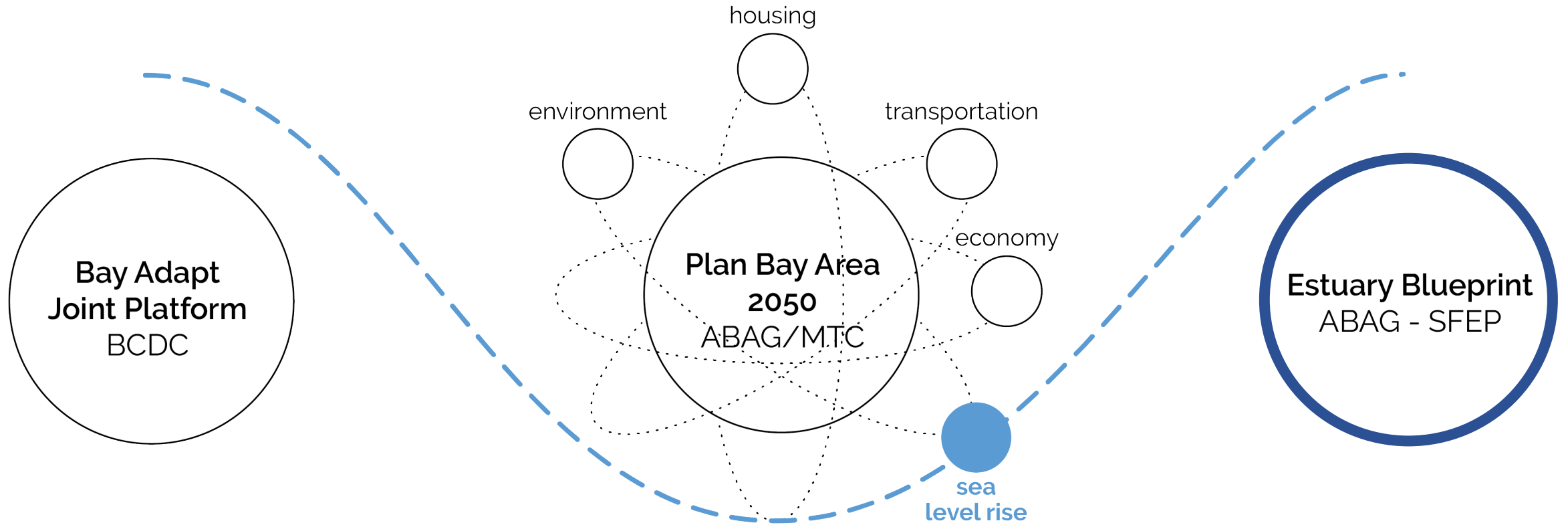
- A place-based EPA program
- Collaborative and non-regulatory
- Created to leverage federal, state, and regional resources to support local projects



Estuary Partnership Planning Area



Estuary Blueprint within the Galaxy



Estuary Blueprint Background

- The Clean Water Act calls for each NEP to develop and implement a Comprehensive Conservation and Management Plan (CCMP)
- EPA requires periodic review and revisions of CCMPs
 - 1993 – First CCMP completed for the San Francisco Estuary
 - 2007 – CCMP updated (revised existing and added new actions)
 - 2016 – Major revision of CCMP (renamed “SF Estuary Blueprint”)





2016 - 2021 Estuary Blueprint



A Regional, Collaborative Vision for the Future of the Estuary

Where do we want to be in 2050?



2016 Estuary Blueprint

- 4 Goals
- 12 Objectives
- 32 Actions
- 80 Partners
- 5 Years (2016 - 2021)



2016 Estuary Blueprint

Actions

- Strategies or set of Tasks
- Task Milestones:
Achievable within 5 Years
- Identified Task Owners
and Collaborating Partners

ACTION
21

Reduce water use for landscaping around the Estuary

Facilitate more efficient use of water, whether recycled or potable, on landscaping. Collaborate with municipalities, water supply agencies, land use agencies, and others to reduce overall water use on landscaping. Create standards for measuring progress regionwide.

TASK 21-1 Work with water supply agencies, municipalities, the California Department of Water Resources (DWR), the California State Water Resources Control Board, and others to develop a standardized approach to quantifying and reporting on water use for all new and existing landscaped areas. Use the latest available technology, as well as the methodology developed by DWR for the updated 2015 Model Water Efficiency Landscape Ordinance (MWELO), and other methods as appropriate.

BY 2018 Ensure standardized reporting in place.

TASK 21-2 Working with the partners identified in Task 21-1, develop permanent (i.e., non-drought) performance standards against which progress in reducing landscape water use region-wide will be measured.

BY 2018 Ensure performance standards in place.

TASK 21-3 Support expansion of local or regional water efficient landscape maintenance training programs that use the watershed approach. Support use of models such as the California Friendly Landscape Training Program and Bay-Friendly Landscape (Rescape California) Program.

BY 2019 Launch training programs in three new regions around the state.

TASK 21-4 Collaborate with municipalities, land use agencies, and others to create pilot programs that expand the application of efficiency standards to all new and existing landscaping projects.

BY 2020 Establish pilot programs in three municipalities.

BACKGROUND

Outdoor water use is responsible for about 40 percent of total water use in the Estuary's urban environment, and an even higher percentage of use in hotter inland portions of the region. Existing state law calls for a 20 percent reduction in per capita water use by 2020. Although many parts of the region have already met or exceeded that goal under the recent drought regulations, these reductions may be short-lived according to the 2015 *State of the Estuary Report*.

While additional indoor water use efficiency is possible through the installation of low-flow toilets, shower heads, leak detection, and other steps, getting to the next level of long-term reduction will require focused attention on outdoor water use, including housing and development planning (see Action 23).

Reductions in water use for landscaping and gardening can benefit stormwater management, water quality, and water supply. Water use policies that include reductions for landscaping can both increase water supply reliability and offset use of imported water, as well as groundwater and local stream flows.

The CCMP action supports the Department of Water Resources' revised Model Water Efficient Landscape Ordinance (MWELO, 2015). The revised ordinance applies to new landscaping projects over 500 square feet and rehabilitated landscapes over 2,500 square feet. The MWELO also encourages the use of a watershed approach and collaboration among industry, government, and property owners to achieve multiple benefits, and provides a methodology for calculating the upper limit for water use on a particular landscape. This methodology, or a similar approach, could be applied to all existing landscaped areas.

In the long term, incentive programs such as lawn-to-garden or "cash-for-grass" rebates, stormwater capture, greywater reuse, and other on-site reuse by both residential and commercial water users will be key to reducing urban water use. This CCMP action has been identified in the *California Water Action Plan*, Executive Order B-29-15, and the non-governmental report *Wetter or Not*. It has also been written into state law through the Water Conservation in Landscaping Act of 2006 (AB 1881). The State Water Resources Control Board is also formulating performance standards for long-term water use reduction, which will help inform the tasks associated with this action.

OWNERS

Rescape California (Task 21-3)
SF Estuary Partnership (Tasks 21-1, 21-2, 21-3, 21-4)

COLLABORATING PARTNERS

CA Department of Water Resources, CA Urban Water Conservation Council, State Water Resources Control Board, The Bay Institute, various local and regional governments and planning agencies, and local water agencies

NEXUS

Actions 18, 19, 22-24, 27
Goals 1, 3, 4
Objectives a, g, j



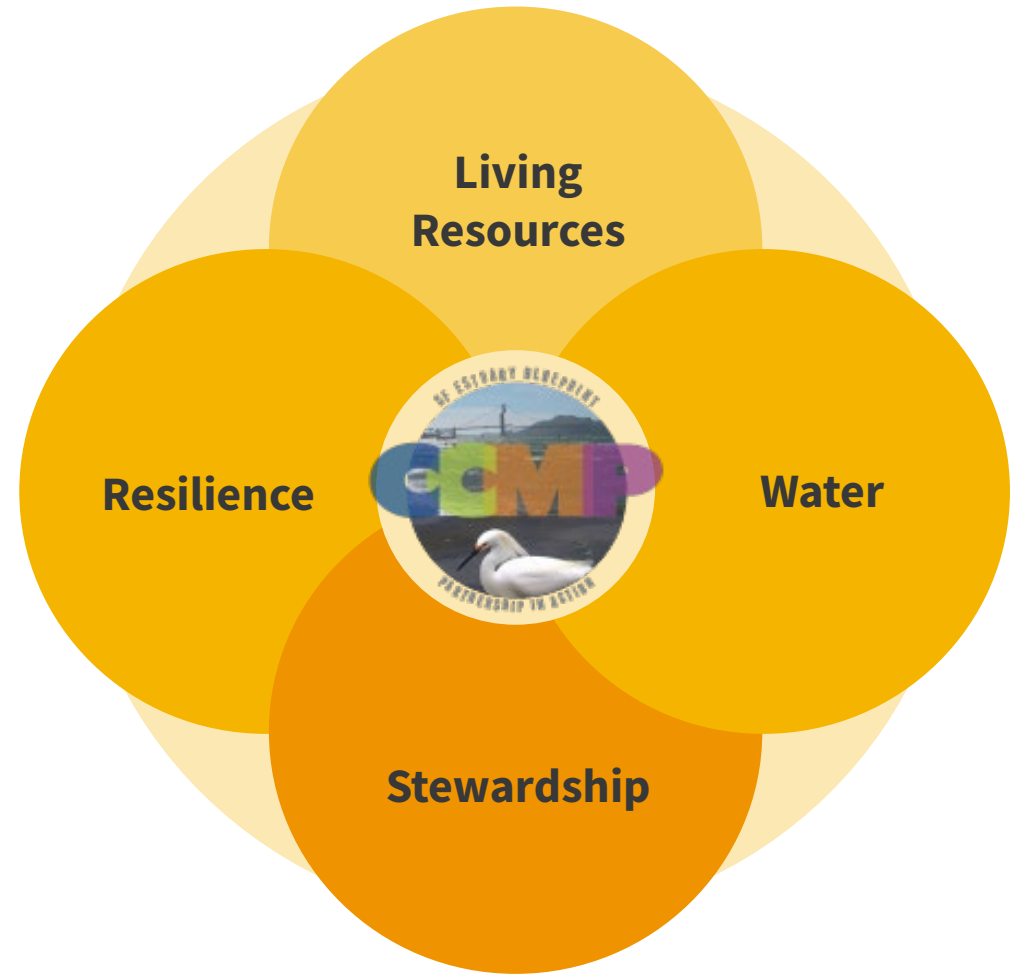
From Estuary 2016 Blueprint

2022-2026 Estuary Blueprint



2022 Estuary Blueprint Update

GOALS → OBJECTIVES → **ACTIONS** → TASKS



2022 Estuary Blueprint Update – Guiding Principles



Remain aspirational yet feasible



Expand and deepen multi-sectoral engagement



Integrate further across geographies and plans



Focus on equity



Improve clarity and responsibility



Estuary Blueprint Update: Resilience

Advance natural resource protection while planning for increased resilience of shoreline communities

Accelerate implementation of climate adaptation projects that prioritize natural and nature-based strategies

Raise the bar for water conservation by reducing remaining barriers to increased water use efficiency

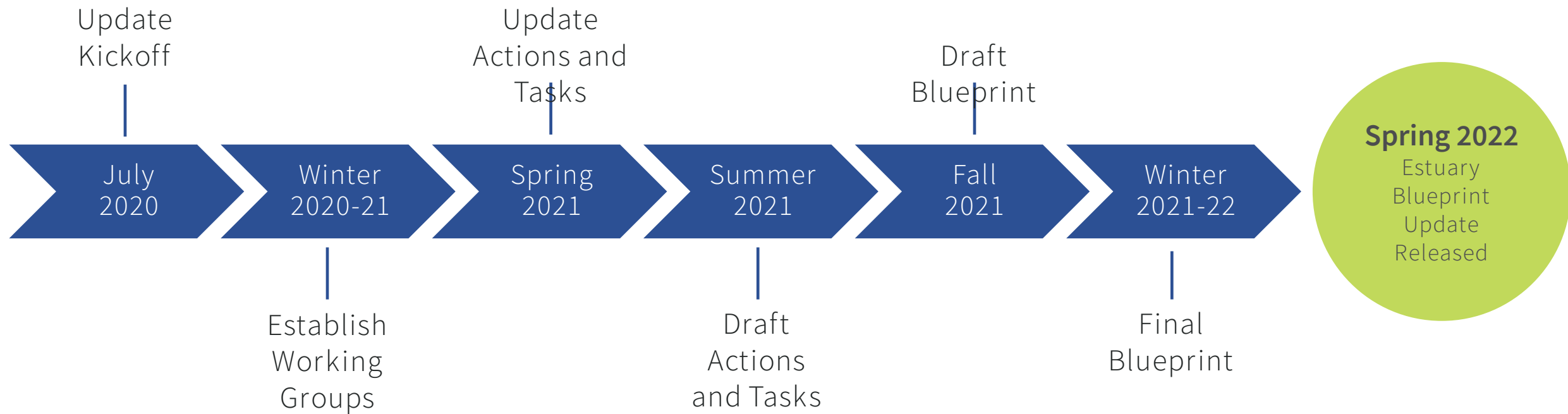
Envision sustainable streets that manage stormwater, reduce flooding, and improve water quality



Photo credit: Karen McDowell, SFEP



Estuary Blueprint Update - Timeline



To learn more or get involved:



San Francisco
ESTUARY
PARTNERSHIP

Have Questions?

Darcie Luce | Program Manager

o 415.778.6673

Darcie.luce@sfestuary.org

sfestuary.org





Thank You

Darcie Luce | darcie.luce@sfestuary.org



San Francisco
ESTUARY PARTNERSHIP