

Bay Area Express Lanes Strategic Plan

Operations Committee Meeting

April 9, 2021



METROPOLITAN TRANSPORTATION COMMISSION

Background:

Simultaneous Efforts, in Concert with Partners

Summer 20

Fall 20

Winter 20

Spring 21

Plan Bay
Area 2050



Finalized Network

Strategic
Plan



- Express Bus
- Equity
- GHG/VMT Reduction
- Road Pricing Strategies
- Interconnectedness
- Consistent Operating Policies
- Financing Strategies
- Strategic Funding Principles

Equity: BAIFA FasTrak® START pilot

Strategic Plan Adoption



BAY AREA EXPRESS LANES

Key Components

Purpose



Overview



Background



Network



Vision



Process



Recommendation



Findings



Achieving Goals



Building the Network



Planning for Change



Continuing Work



Recommendations



Near-Term Actions



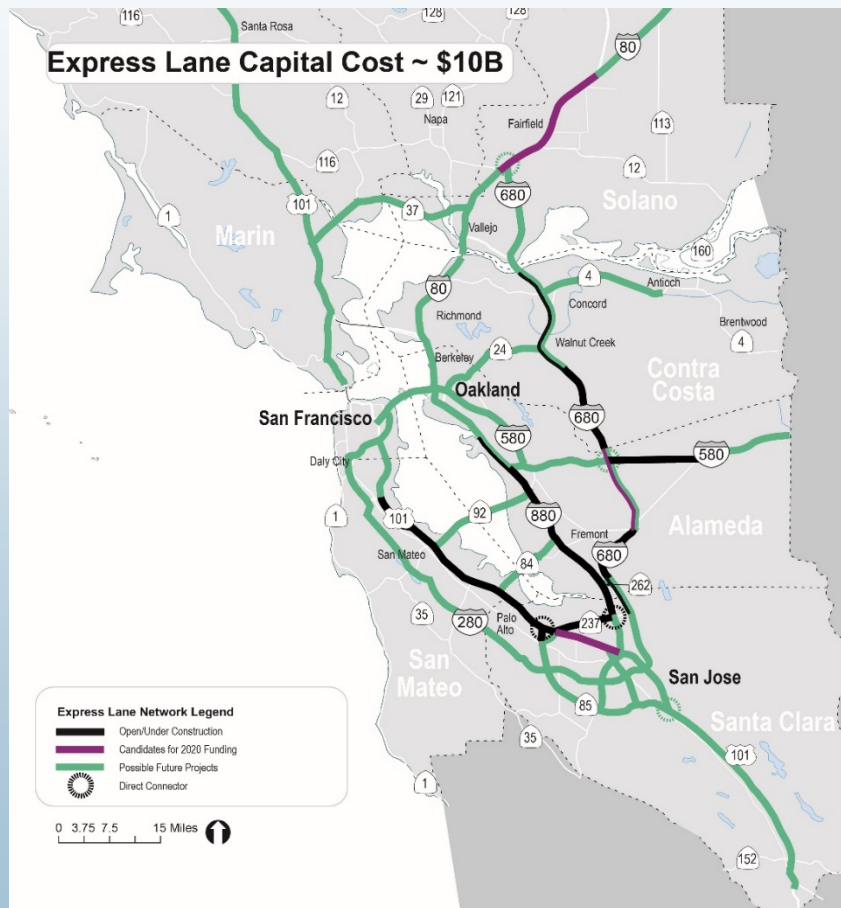
BAY AREA EXPRESS LANES

2: Network

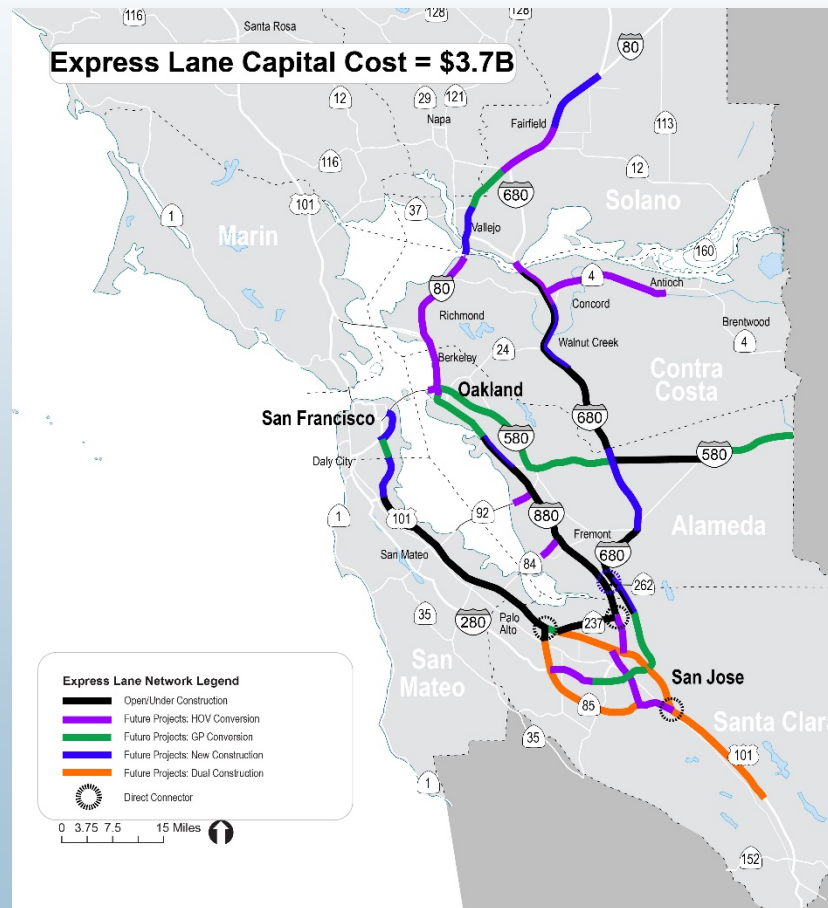


2: Network

Vision



Plan Bay Area 2050 Network

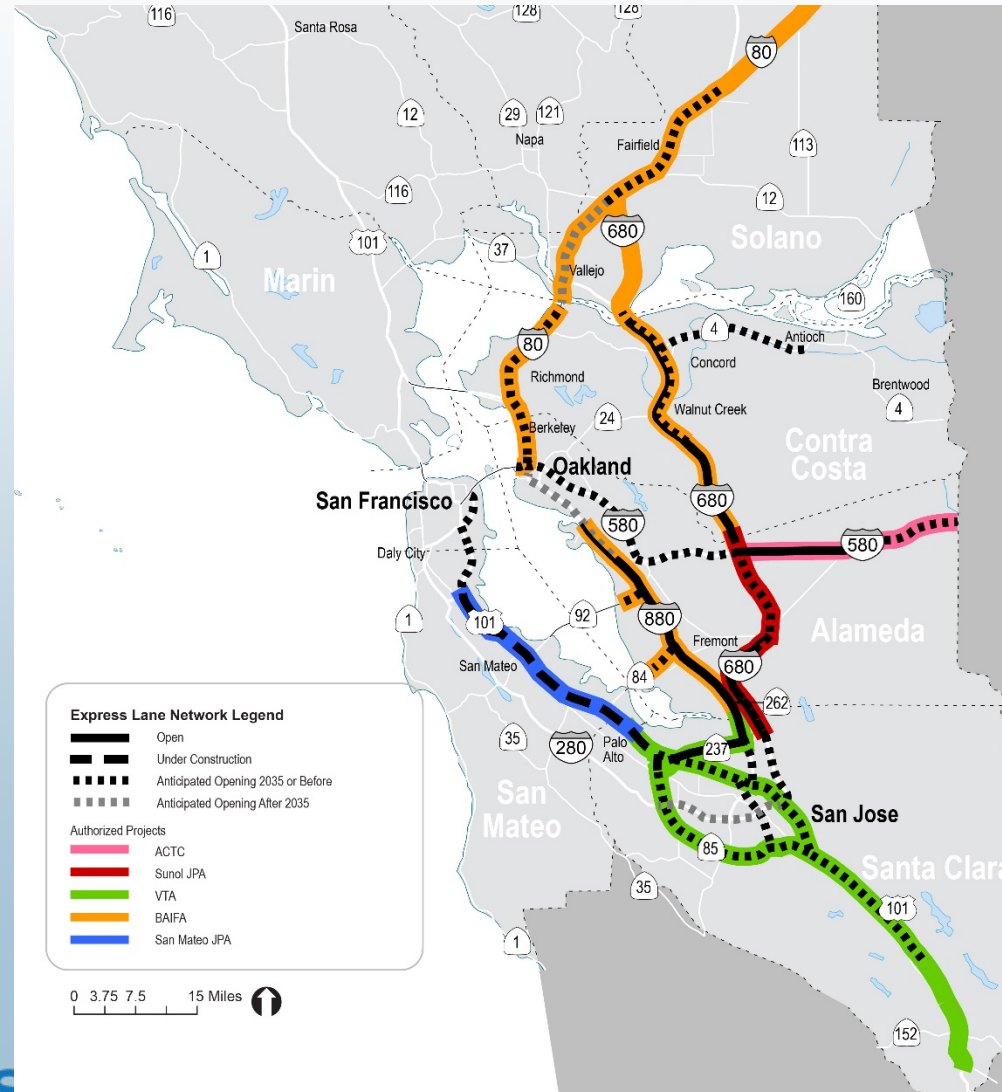


PBA 2050 Network Stats:

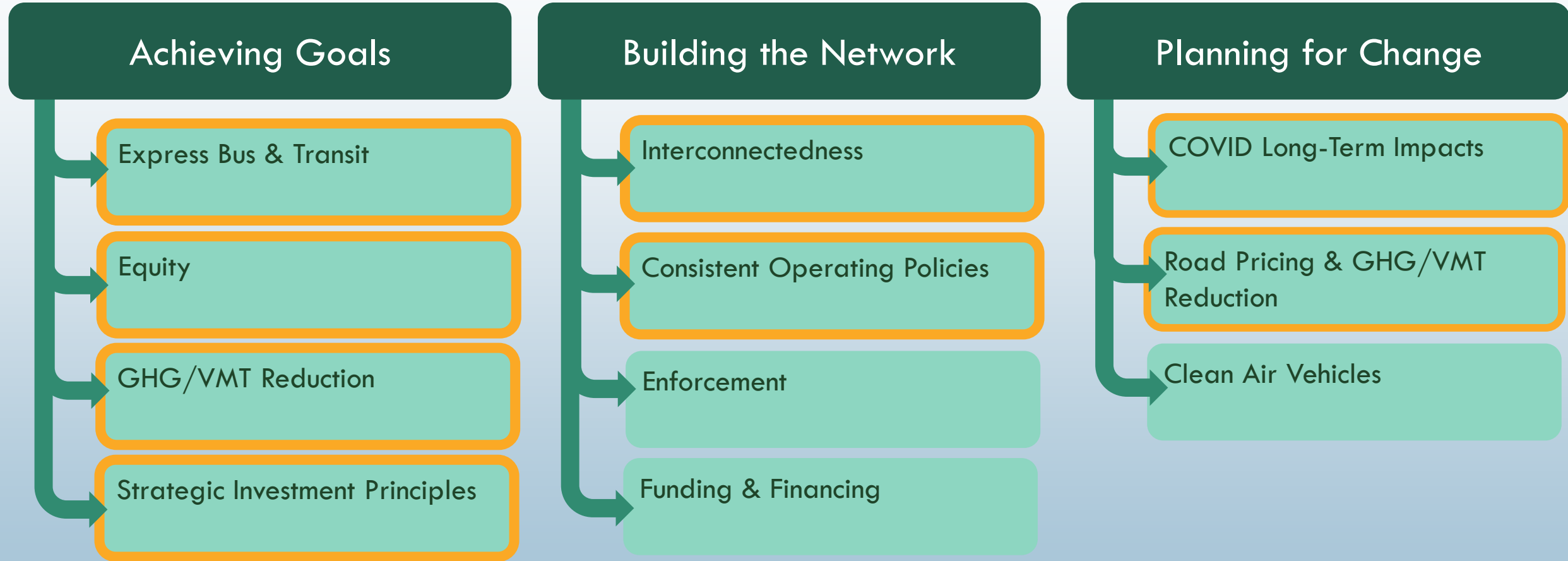
- ~750 lane-miles
- By stage:
 - 130 in operation
 - 70 under construction
 - 250 in environmental/design
 - 130 in planning
 - 170 remaining
- By type:
 - 290 HOV Conversion
 - 140 GP Conversion
 - 140 New Lane
 - 170 Dual Lane



2: Network by Agency and Timing



3: Findings



3: Findings – Express Bus and Transit

Achieving Goals



Express Bus & Transit

Equity

GHG/VMT Reduction

Strategic Investment Principles

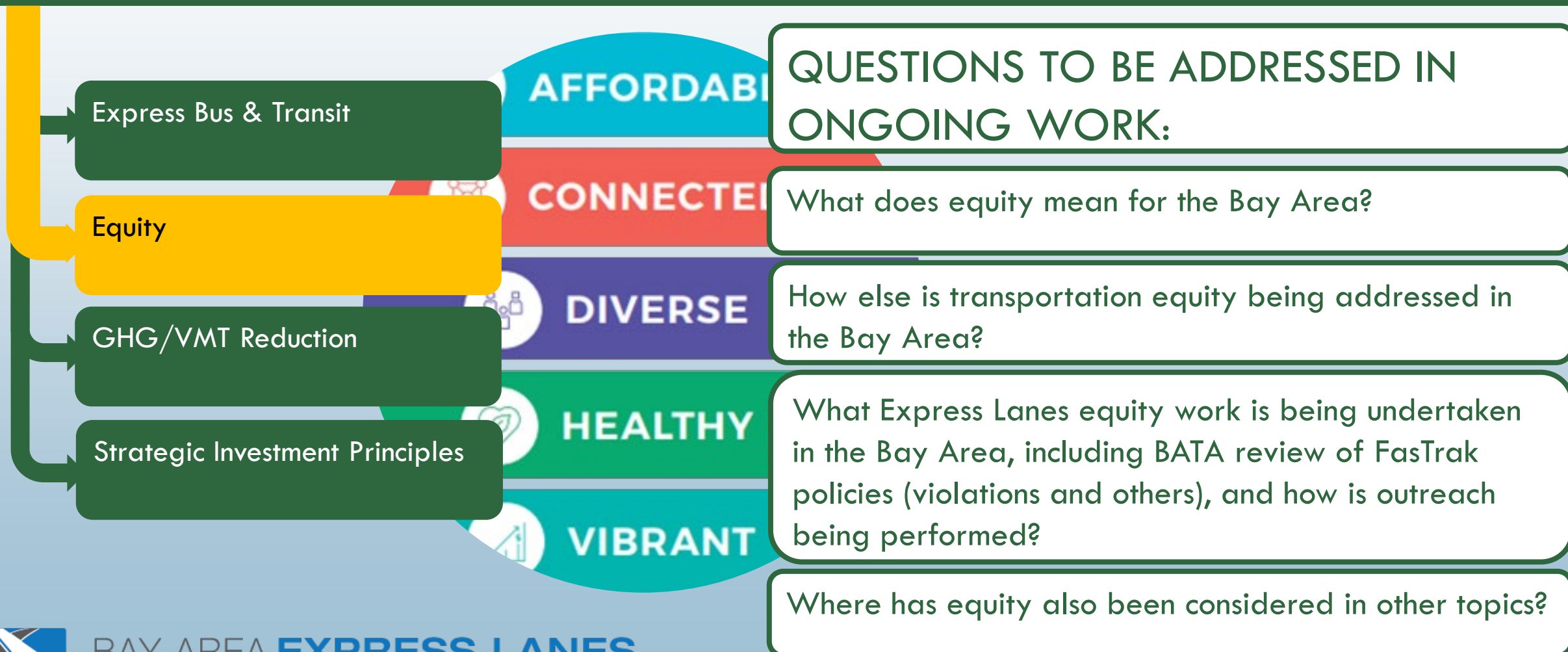
RECOMMENDATIONS:

1. Work with transit planners and operators to enhance transit priority and improve accessibility to the express lanes for express buses and other high-occupancy modes
2. Since express buses will not perform well everywhere, work with partners on criteria and performance metrics to prioritize investments
3. Advocate for transit operators and planners to increase connectivity and communication of transit services
4. Identify opportunities to link transit and transit demand management (TDM) investments with SB-743 mitigation strategies while acknowledging operations funding challenges



3: Findings - Equity

Achieving Goals



3: Findings – GHG/VMT Reduction

Achieving Goals



Express Bus & Transit

Equity

GHG/VMT Reduction

Strategic Investment Principles

RECOMMENDATIONS:

1. Participate with partners to promote regional- and county-level mitigation solutions
2. Advocate for legislation to allow General Purpose (GP) to Express Lane (EL) conversion pilots



3: Findings – Strategic Investment Principles

Achieving Goals



Express Bus & Transit

Equity

GHG/VMT Reduction

Strategic Investment Principles

RECOMMENDATIONS:

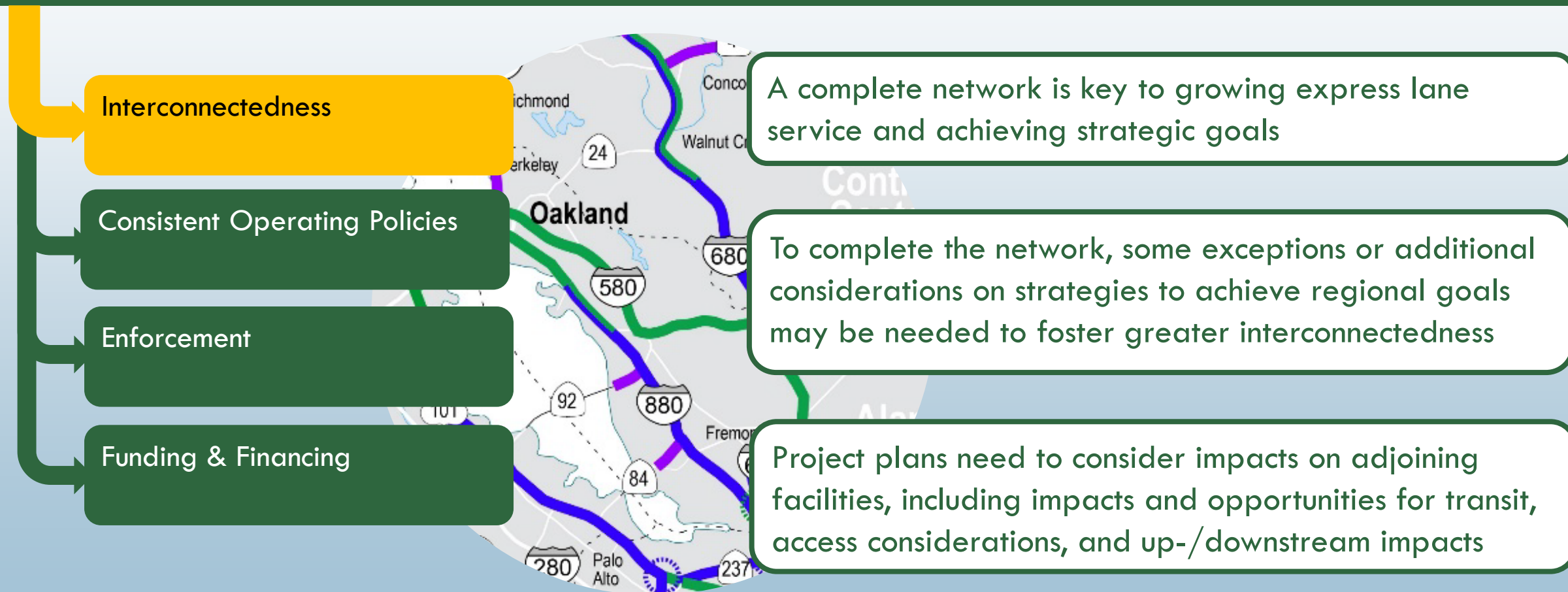
Evaluate projects for future funding by:

1. Merit (Connected Mobility, Benefits and Costs, Equity)
2. Readiness



3: Findings – Interconnectedness

Building the Network



3: Findings – Consistent Operating Policies

Building the Network



Operations Policy	Consistent? (Adopted Operator Policies)*
Hours of Operation**	✓
HOV Occupancy***	✓
Toll Discounts (HOV/Clean Air Vehicles)	✓
Violation Penalties/Fees	✓
Automated Occupancy Enforcement	Future Policy
Equity Programs	Future Policy

* San Mateo JPA has yet to adopt policies

** Determined by Caltrans

*** Based on corridor traffic

3: Findings – Consistent Operating Policies

Building the Network

Interconnectedness

Consistent Operating Policies

Enforcement

Funding & Financing

NEAR TERM ACTIONS:

1. Formalize a consensus-building process through an MOU
2. Introduce a framework to help understand what level of consistency makes sense for each policy



3: Findings – Expectations for Upcoming Disruptions

Planning for Change



COVID Long-Term Impacts

Road Pricing & GHG/VMT Reduction

Clean Air Vehicles

- Reduced transit and carpool ridership, at least temporarily
- Sustained increase in remote work, which reduces revenue

Key express lanes questions for road pricing study:

1. How will congestion be impacted?
2. What are possible operational changes for express lanes?
3. How will debt obligations be satisfied?
4. How will express lane and road pricing policies be administered?

- SB 743 developments
- Possible Plan Bay Area 2050 demand management strategies: speed limit decreases, remote working
- Possible Federal climate initiatives



4: Continuing and Future Work

Recommendations

GHG/VMT Reduction

1. Promote regional- & county-level mitigation solutions (All Partners)
2. Advocate for legislation to allow General Purpose to Express Lane conversion pilots (CTAs & MTC)

Funding and Financing Strategies

1. Advocate and seek opportunities for state and federal funding (All Partners)
2. Monitor future regional funding initiatives (All Partners)

Express Bus & Transit

1. Work with transit planners and operators to enhance transit priority and improve accessibility to the express lanes for express buses and other high-occupancy modes (All Partners)
2. Since express buses will not perform well everywhere, establish criteria and performance metrics to prioritize investments (TBD)
3. Advocate for operators and planners to increase connectivity and communication (All Partners)
4. Identify opportunities to link transit & TDM investments with SB-743 mitigation strategies while acknowledging operations funding challenges (All Partners)

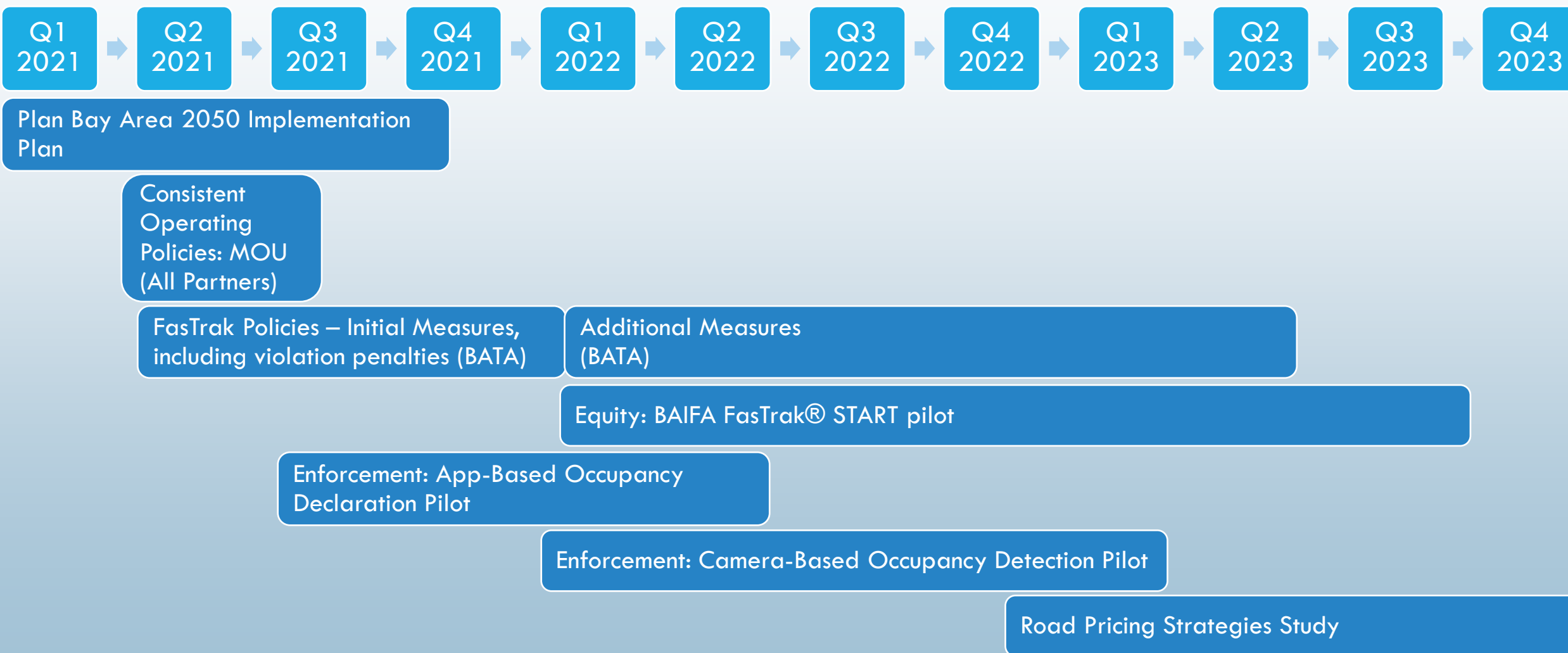
Strategic Investment Principles

Evaluate projects for future funding by:

1. Merit (Connected Mobility, Benefits and Costs, Equity)
2. Readiness (MTC)

4: Continuing and Future Work

Near-Term Actions (led by MTC except as indicated)



5: Continuing and Future Work

Closing Thoughts

1. Express lanes provide a much needed benefit to help Bay Area residents make transportation choices that will help achieve our regional goals.
2. We can overcome challenges by continuing to work together collaboratively as a region.
3. Even with uncertainty in the future, the region is committed to the Express Lanes being a tool to help:
 1. Reduce regional GHG impacts from transportation
 2. Provide priority to transit and carpools
 3. Promote equity in the region

An aerial photograph of a multi-lane highway. Several cars are visible in different lanes, moving away from the viewer. The road has white dashed lane markings. In the lower-left lane, the words "EXPRESS" and "LANE" are painted in large white letters on the asphalt. A semi-transparent white box with a blue gradient is overlaid on the top-left corner of the image, containing contact information.

Contact Information:

Jim Macrae

Assistant Director, Express Lanes

jmacrae@bayareametro.gov

(415) 778-6714