

ABAG POWER

Executive Committee Meeting

Thursday, April 15, 2021

Ryan Jacoby
Program Manager



1

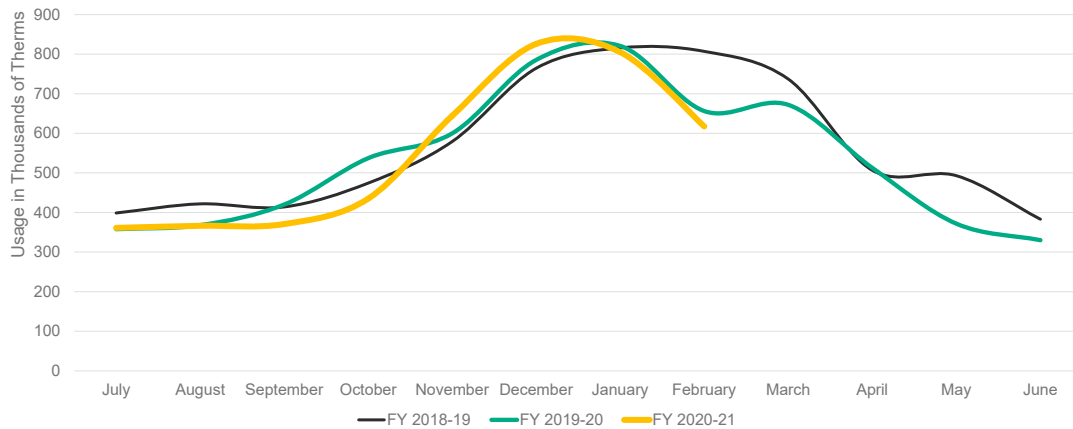
8.a. - Monthly Summary of Operations

- Preliminary (unaudited) financial statements indicate a fiscal year cumulative rate **1.4%** higher relative to PG&E's small commercial rate schedule
- Finalization of Task Orders with GPT, Inc.:
 - Task Order 1: Program Design
 - Task Order 2: Business Optimization
 - Task Order 3: Operations



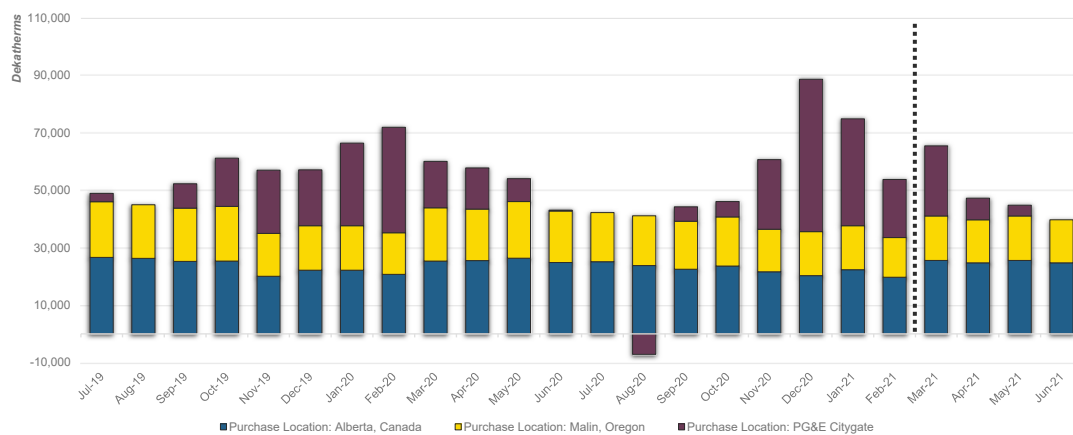
2

8.a. - Monthly Summary of Operations



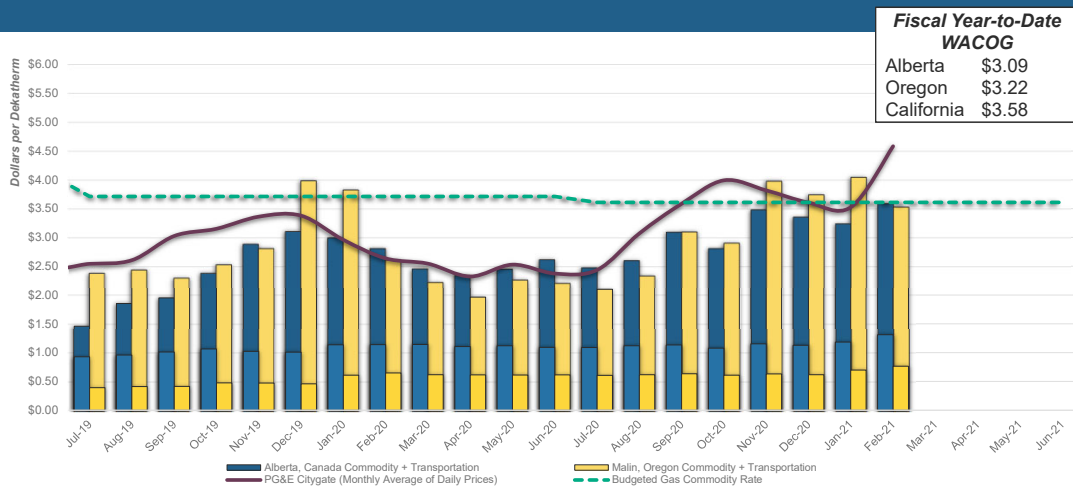
3

8.b. – Gas Supply by Origin



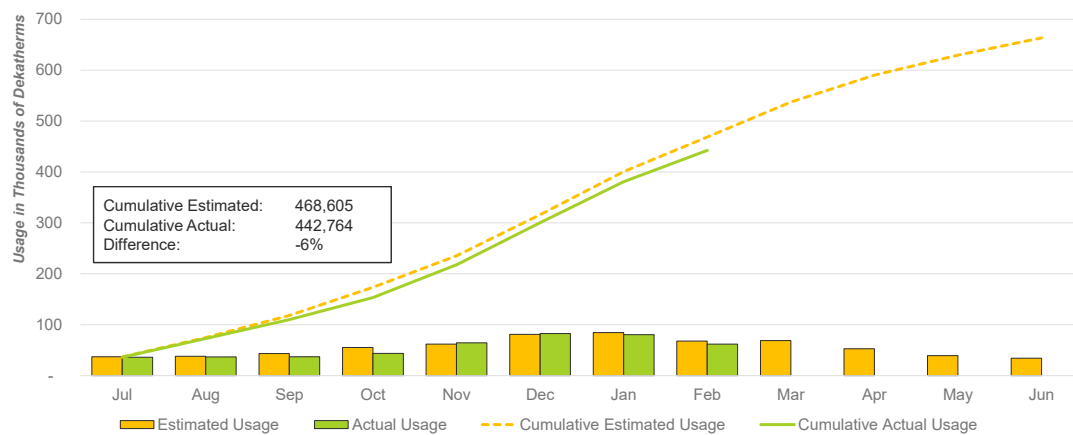
4

8.c. – Market Price Comparison



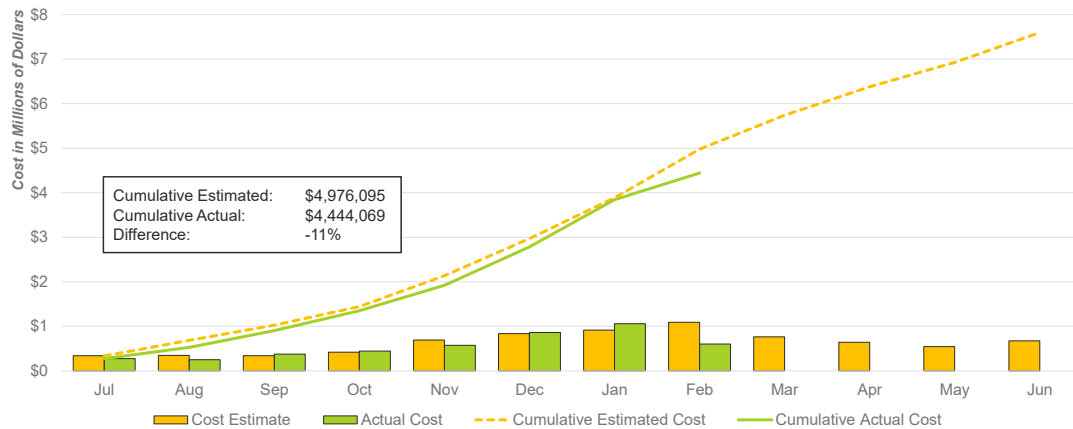
5

8.d. – FY 2020-21 Budget-to-Actual



6

8.d. – FY 2020-21 Budget-to-Actual



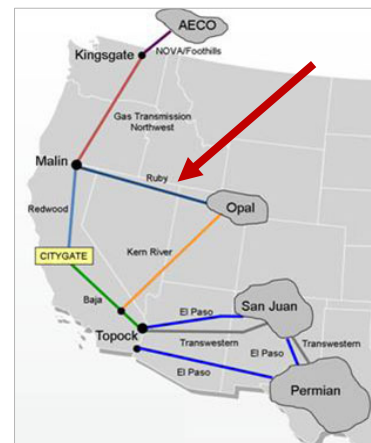
7

8.e. – Regulatory Proceedings

A.20-08-23: PG&E's Long-Term Gas Transportation Agreements w/ Ruby Pipeline

Seeks approval of:

- Amendments executed in May 2020
- Future amendments through an Advice Letter, rather than formal proceeding
- Proposed procedures for annual step-down and "evergreen" contract rights
- Cost recovery mechanism



8