

## Agenda Item 5.a.1 – Summary of Natural Gas Program

December 8, 2020

Page 1 of 5

# ABAG POWER Executive Committee Meeting

Tuesday, December 8, 2020

Ryan Jacoby  
Program Manager



1

## 5.a. - Monthly Summary of Operations

- Preliminary (unaudited) financial statements indicate a fiscal year cumulative rate 20.6% higher relative to PG&E's small commercial rate schedule.
- Seasonal weather and usage started to return in late October and will have a positive impact on rate comparison.
- PG&E's procurement rate is likely to rise in the coming months.

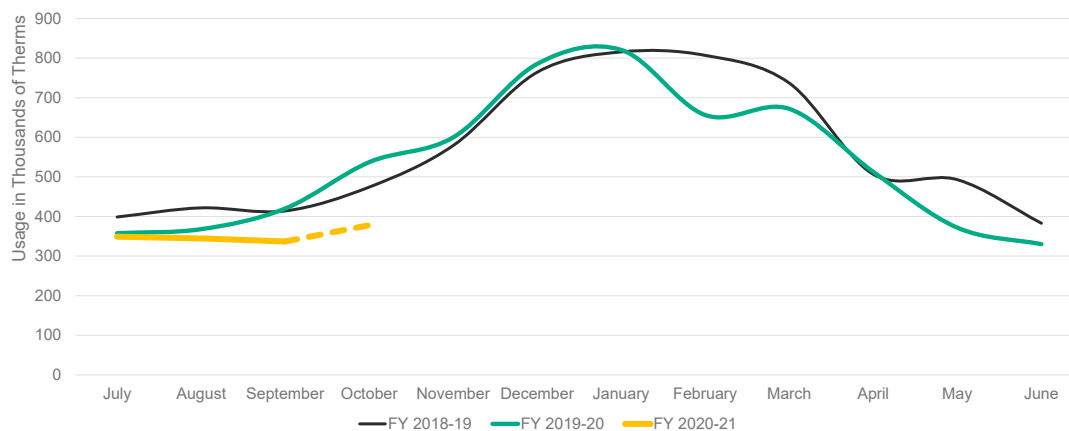


2

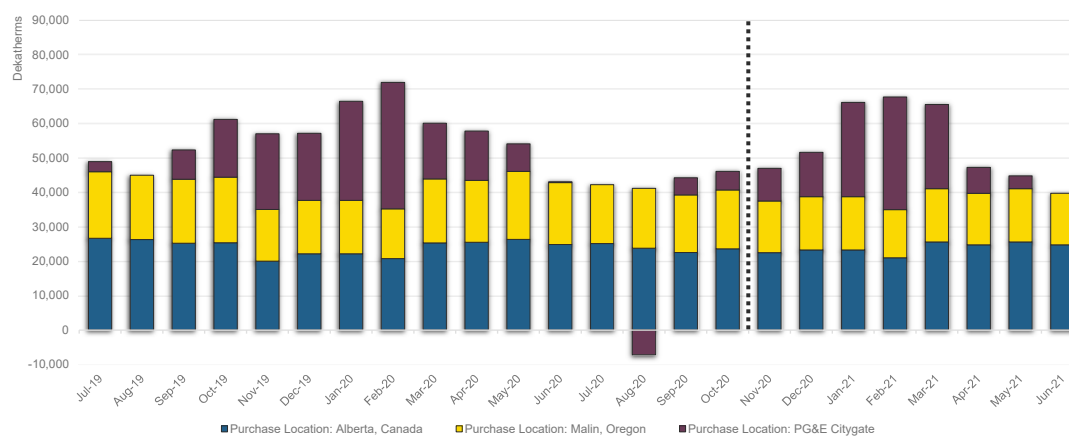
**Agenda Item 5.a.1 – Summary of Natural Gas Program**

December 8, 2020

Page 2 of 5

**5.a. - Monthly Summary of Operations**

3

**5.b. – Gas Purchases by Origin**

4

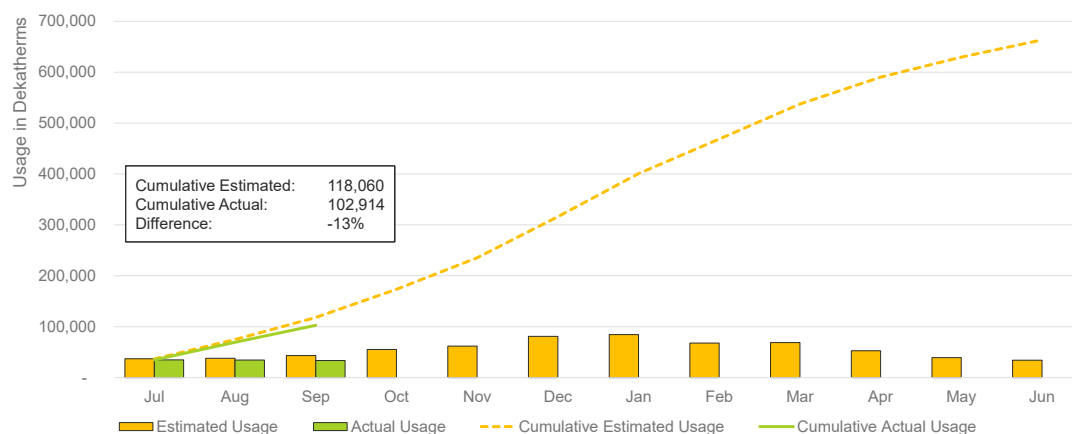
**Agenda Item 5.a.1 – Summary of Natural Gas Program**

December 8, 2020

Page 3 of 5

**5.c. – Market Price Comparison**

5

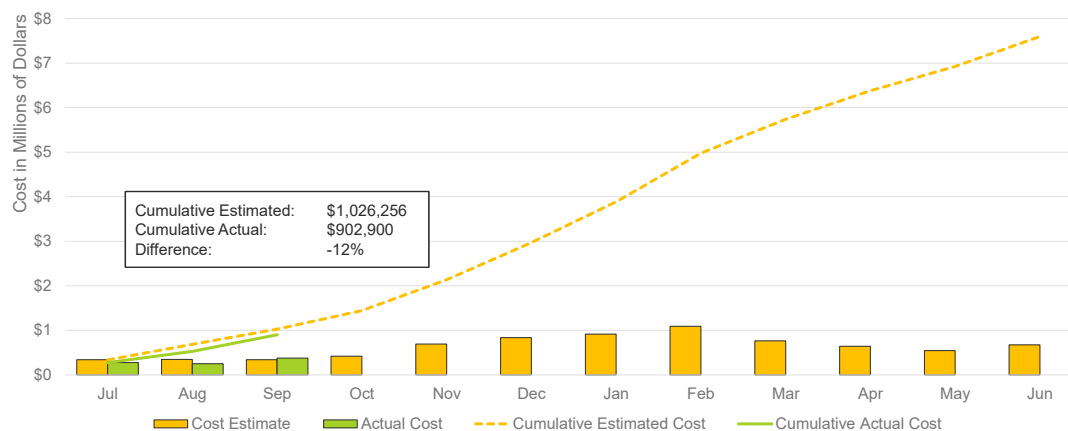
**5.d. – FY 2020-21 Budget-to-Actual**

6

**Agenda Item 5.a.1 – Summary of Natural Gas Program**

December 8, 2020

Page 4 of 5

**5.d. – FY 2020-21 Budget-to-Actual**

7

**5.e. – FY 2019-20 True-up Summary****➤ Process<sup>1</sup>**

- Compares site-level budgeted (invoiced) vs. actual costs
- Difference in costs is amortized in equal monthly installments over the remaining months in fiscal year

Current Fiscal Year Monthly Levelized Charge											
					→ Prior Fiscal Year Monthly True-Up Allocation						
Jul	Aug	Sep	Oct	Nov	Dec	Jan	Feb	Mar	Apr	May	Jun

<sup>1</sup> Section 9.4 of the Natural Gas Sales and Aggregation Agreement states this process shall be conducted after the end of each fiscal year

8

## 5.e. – FY 2019-20 True-up Summary

### ➤ Takeaways

- Usage is the primary predictor of cost, but rate schedules and load profiles cause variations in cost even if usage is identical for two accounts.
- Core usage was 10% lower than budgeted while noncore usage was 30% higher than budgeted.
- The weighted-average method of usage prediction is imperfect but generally provides a reasonably accurate annual projection.

