

4. SUMMARY AND NEXT STEPS

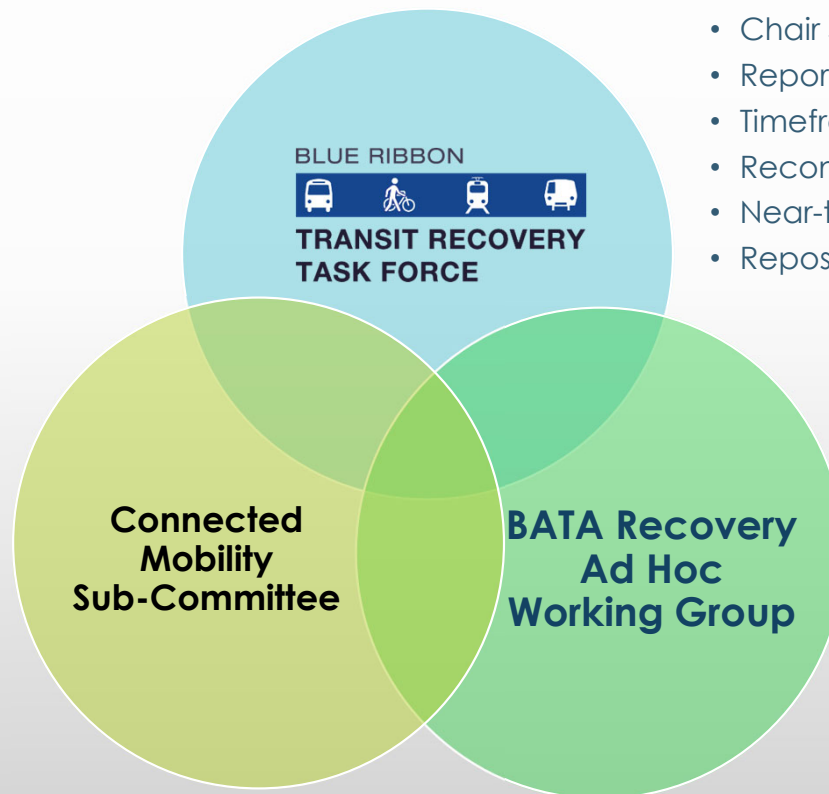


November 20, 2020

MTC COVID-19 Response Efforts: Inter-Relationships

- Subcommittee of Partnership Board
- Chair Deborah Degang, VTA
- Reports to: BARC/Partnership Board
- Timeframe: 3 to 12 months
- Quick Complete Streets, data requirements, first and last mile, technology platforms, TDM, telecommuting, employer outreach
- Fare Integration Study
Timeframe: 18 months

BATA Recovery Ad Hoc Working Group



- 30-member
- Chair Sperling, Facilitator Kinsey
- Reports to: MTC
- Timeframe: 1 year +
- Recommendations for future CARES funding
- Near-term recovery strategies
- Reposition transit for future

- **Commissioners from BATA Oversight, MTC Operations and BAIFA**
- **Chair Worth**
- **Reports to: BATA**
- **Timeframe: 6 months+**
- **Address impact of constrained revenue on mobility, operations and asset management.**

AD HOC WORKING GROUP MEETING TIMELINE

Deep Dive

Recommendations

✓ **August**

Traffic &
Revenue Trends
Finances
Ad Hoc Goals



✓ **September**

Fast-Track
Projects to
Serve Buses &
Carpools



✓ **October**

Toll Collection
& Toll Plaza
Operations



✓ **November**

Toll Bridge
Rehabilitation
& Asset
Management



December

Agency Roles &
Responsibilities
BATA/Caltrans
Joint Venture

February

Program
Costs,
Shortfalls
& Priorities
Next Steps

1
2
3

ASSET MANAGEMENT ROADMAP

1. Evaluate Highest Cost Projects

Paint



- 72% of Top 20
- 28% of Identified Potential Projects

Decks



- 4% of Top 20
- 32% of Identified Potential Projects

2. Create Bridge Asset Management Plans

1. Desired State of Good Repair

2. Gaps

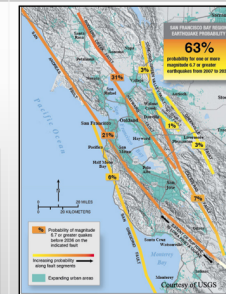


What is the condition today...

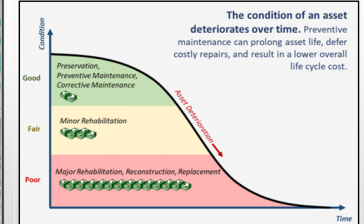


...versus the state of good repair?

3. Risks

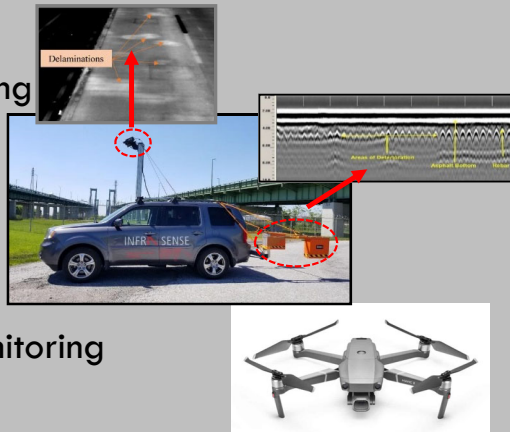


4. Lifecycle



4. Evaluate Tools

- Non-destructive testing
- Paint testing
- Digital twin
- Drone inspection
- Structural health monitoring
- ISO 55001



3. Deliver Projects Efficiently and Effectively

- Alternative delivery
 - Contracted vs state crews
 - Alternatives to design-bid-build
 - Streamline delivery of repetitive work
- Seek administrative-cost efficiencies
 - Review Caltrans overhead rate
 - Position eligible projects for federal stimulus