

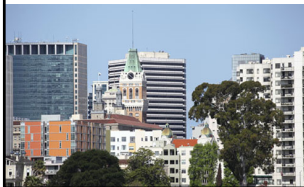
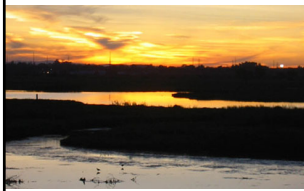
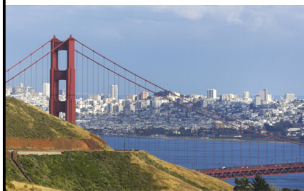


## Introduction to the Association of Bay Area Governments (ABAG)



Association of Bay Area Governments  
Serving the counties, cities and towns of the Bay Area since 1961

## ABAG Formation



- Formed in 1961 to address common issues from a regional perspective
- Established as a joint powers authority, ABAG is unique among regional agencies in mission and governance
- Fosters partnerships among local jurisdictions and provides services through Local Government Services programs

## ABAG and MTC Consolidation



- May 2016, ABAG Executive Board and Metropolitan Transportation Commission (MTC) voted to support full functional consolidation of staff and the pursuit of new governance options.
- Retained independence and statutory responsibilities of both boards and called for consideration of new governance options by both ABAG and MTC

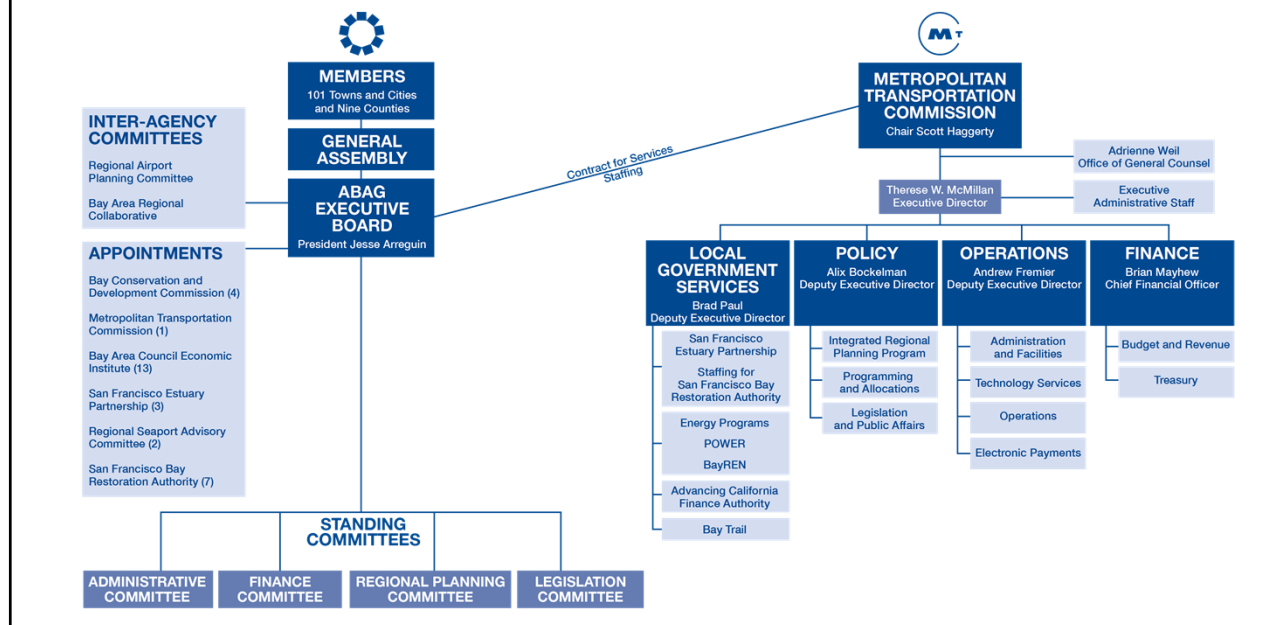
ASSOCIATION OF BAY AREA GOVERNMENTS  
 +  
 METROPOLITAN TRANSPORTATION COMMISSION

**CONSOLIDATION**

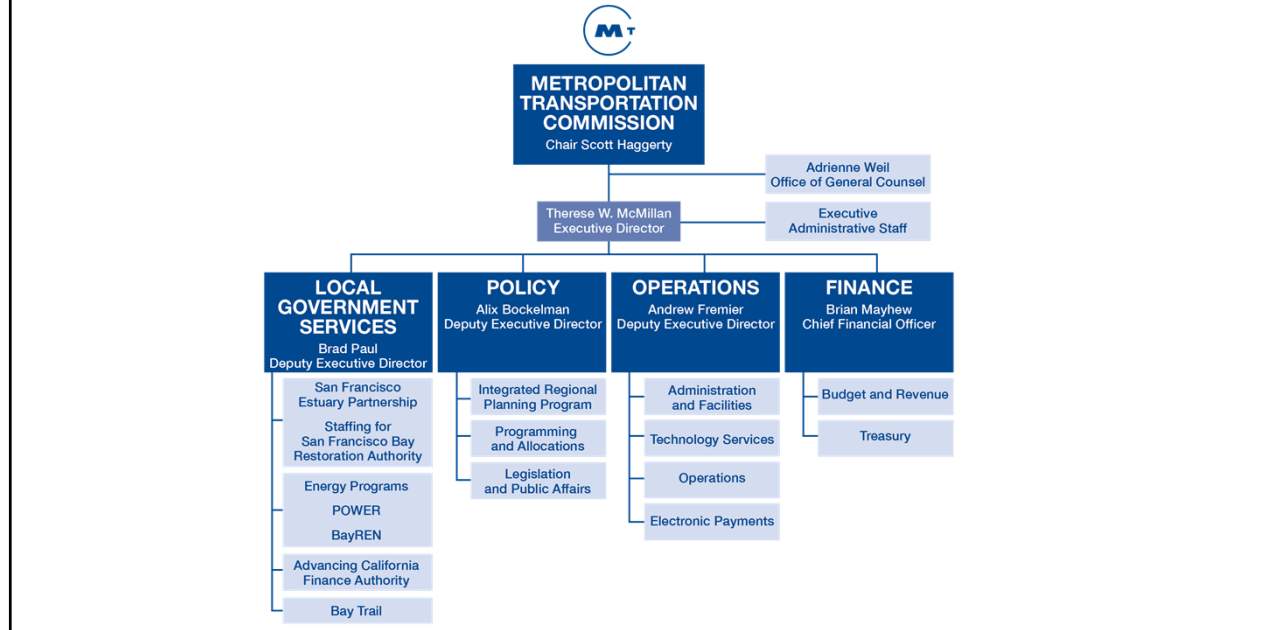
- 1 staff serving 2 boards
- 291 staff strong

ASSOCIATION OF BAY AREA GOVERNMENTS  
 METROPOLITAN TRANSPORTATION COMMISSION

## ABAG Governance Structure



## Consolidated Staff



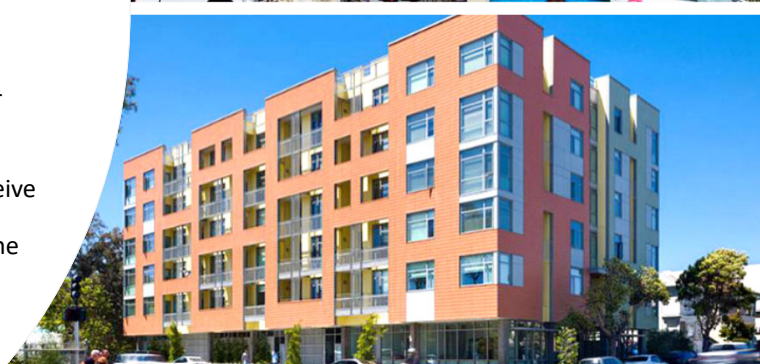
## ABAG, RHNA and Local Government

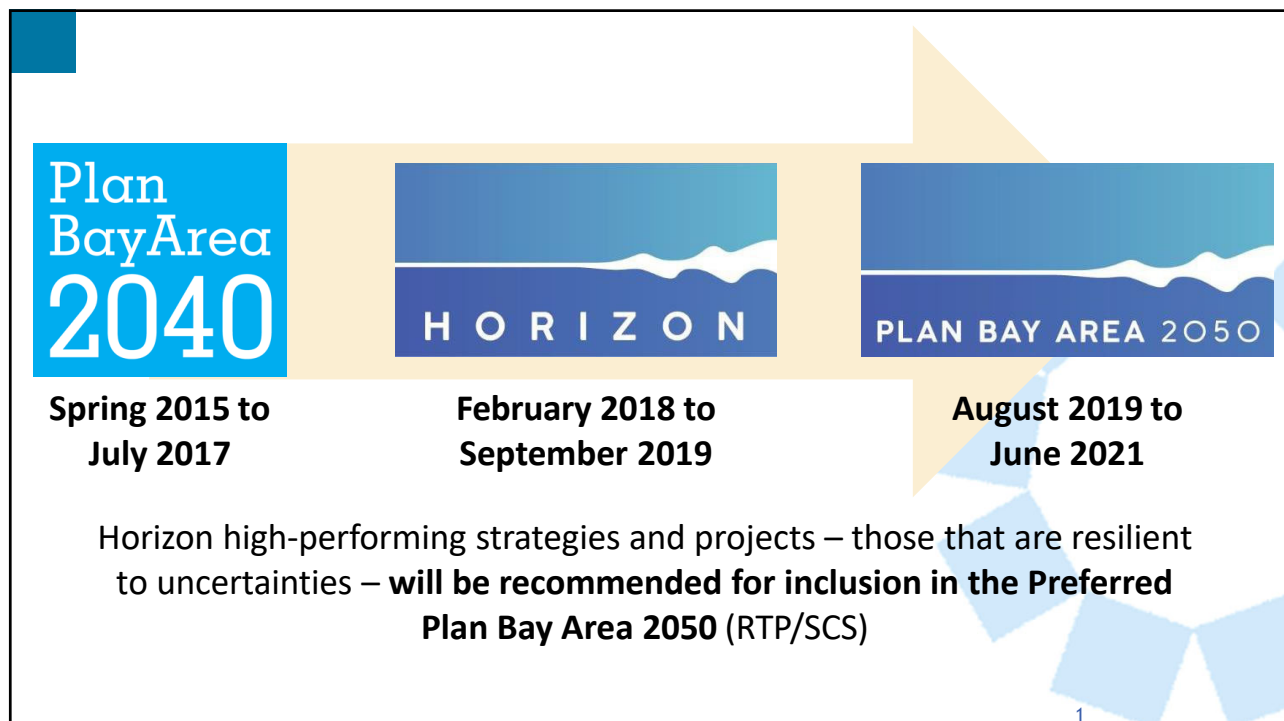


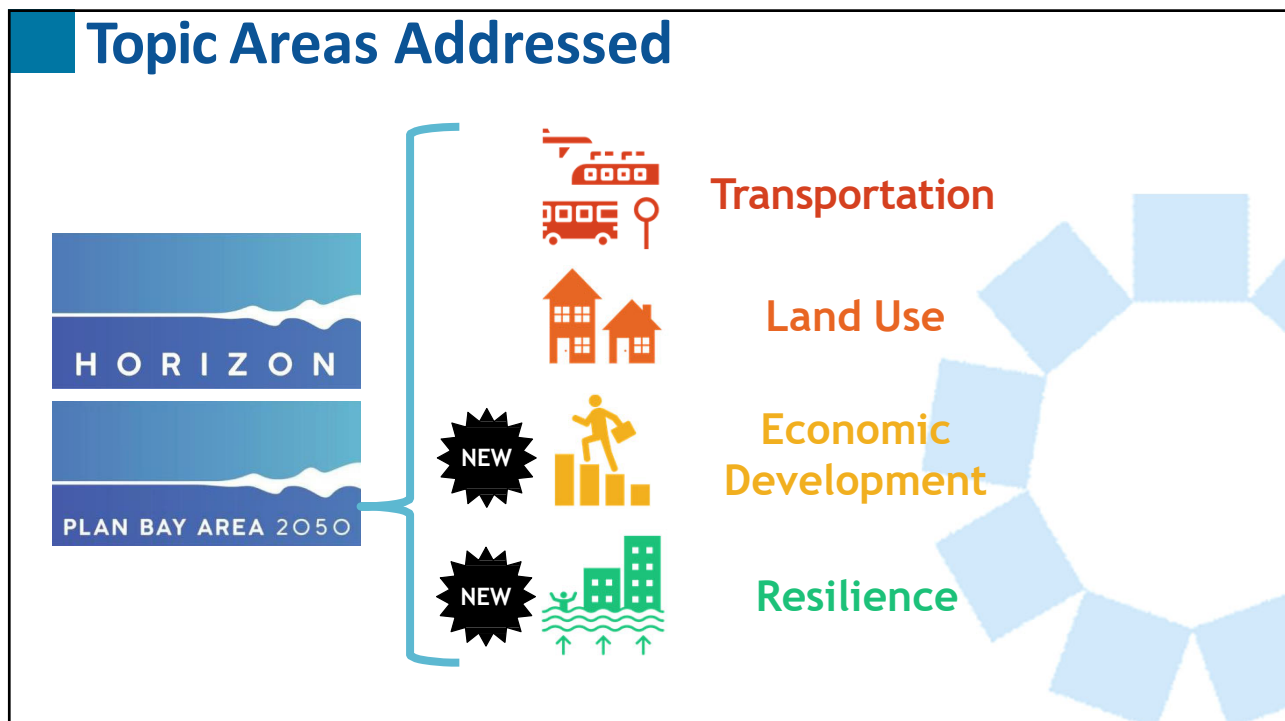
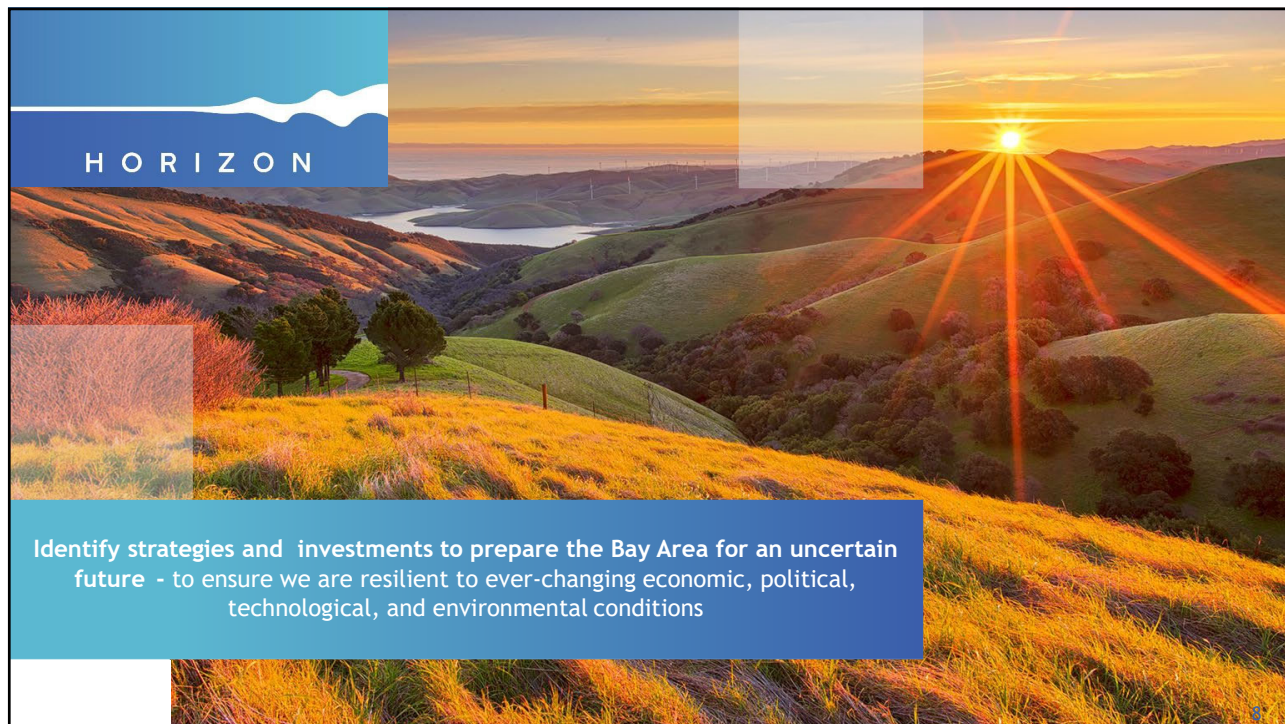
- State-mandated process to plan for housing need by income levels for 8-year period
- CA Department of Housing and Community Development: identifies total need for region
- **ABAG creates RHNA methodology** to distribute regional housing numbers to individual jurisdictions
- Jurisdictions update Housing Elements to show the zoning changes and potential sites, allowing accommodation of new RHNA numbers

### AB 1487 – Bay Area Housing Finance Act


- Grants authority to raise funding for affordable housing across the 9-county Bay Area
- ABAG and MTC (acting as Bay Area Housing Finance Authority or BAHFA) decide:
  - 1) whether to advance ballot measure;
  - 2) revenue source; and
  - 3) how to spend regional share of funds.
- Counties develop expenditure plans for their respective portion of funds.
- 3 largest cities (SF, SJ and Oakland) receive direct allocation while other cities with more than 30% of a county's low-income RHNA have option for direct allocation.








The San Francisco Bay Area  
aspires to be:




AFFORDABLE



CONNECTED



DIVERSE



HEALTHY



VIBRANT

All Bay Area residents and workers have sufficient housing options they can afford - households are economically secure.

An expanded, well-functioning transportation system connects the Bay Area - fast, frequent and efficient intercity trips are complemented by a suite of local transportation options, connecting communities and creating a cohesive region.

The Bay Area is an inclusive region where people from all backgrounds, abilities, and ages can remain in place - with access to the region's assets and resources.

The region's natural resources, open space, clean water and clean air are conserved - the region actively reduces its environmental footprint and protects residents from environmental impacts.

The Bay Area region is an innovation leader, creating quality job opportunities for all and ample fiscal resources for communities.



Icons Credit: The NounProject

Three Futures – “What If?” Scenarios

A



Rising Tides,  
Falling Fortunes

**What if...** the federal government cuts spending and reduces regulations, leaving more policy decisions to states and regions?


B



Clean  
and Green

**What if...** new technologies and a national carbon tax enabled greater telecommuting and distributed job centers?

C



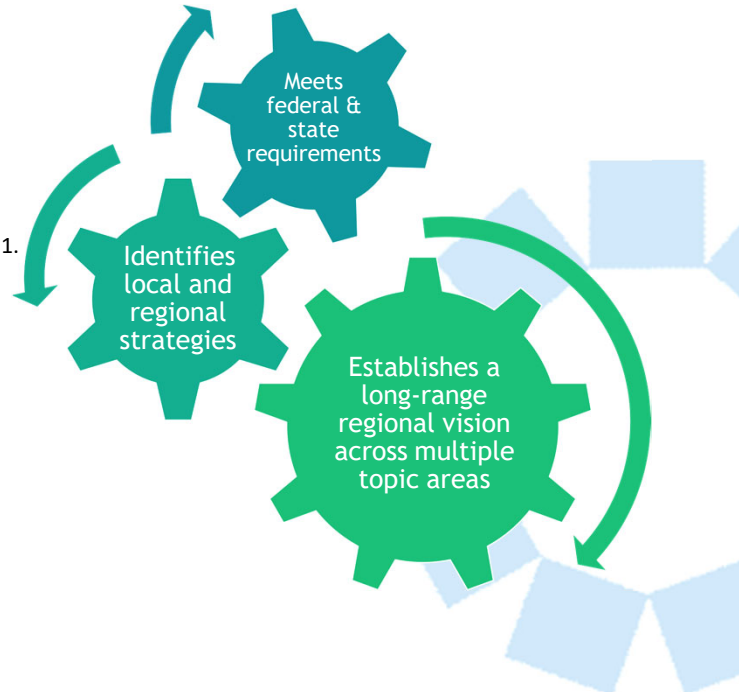
Back to  
the Future

**What if...** an economic boom and new transportation options spur a new wave of development?

14

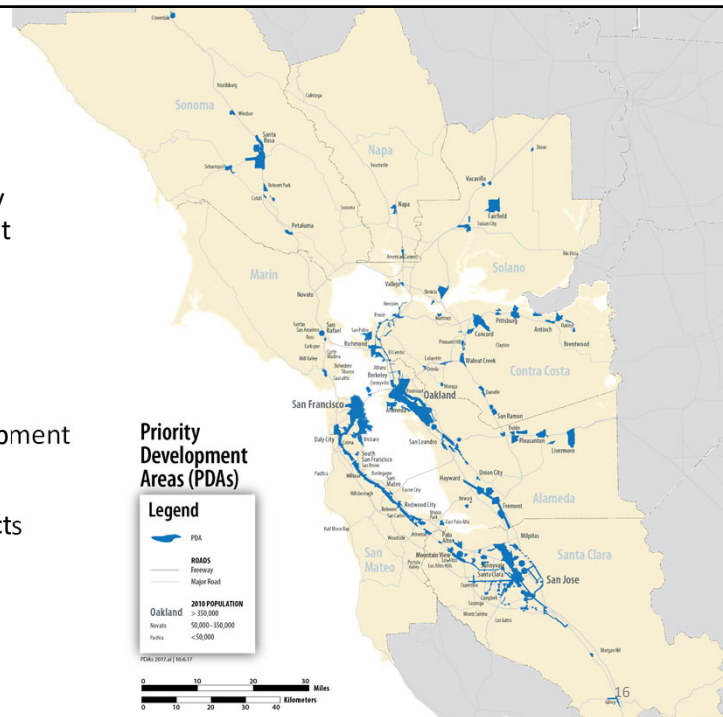
## Plan Bay Area?

- A regional plan or a **blueprint for growth and infrastructure for the next 30 years**
- **Updated every 4 years**, major update due in 2021.
- Reflection of **the shared priorities of the diverse nine-county San Francisco Bay Area**
- **Fiscally-constrained**, aspires to tackle the Bay Area's big challenges with specific strategies
- **Not an expenditure plan**; focused on setting priorities, over the long term and looking holistically across “silos”



## Priority Development Area (PDA) Planning & Technical Assistance

- PDAs: Existing neighborhoods, served by public transit, identified for development
- PDA Planning – 51 projects
  - 70,000 + housing units
  - 110,000 + new jobs
  - 26 million sq. ft. commercial development
- Technical/Staffing Assistance – 31 projects
  - Focus on barriers to local planning implementation





ASSOCIATION OF BAY AREA GOVERNMENTS  
**RESILIENCE PROGRAM**


- Translate technical natural hazard data
- Support local mitigation/ adaption planning
- Provide technical assistance
  - ✓ Policy development
  - ✓ Grants
  - ✓ Community of practice


Sample Product: Earthquake Field Guide & Housing Quiz





## EARTHQUAKE FIELD GUIDE

Housing Type

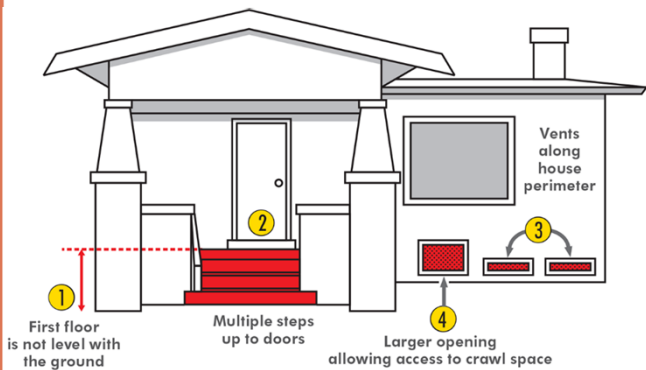
- 

**Identifying Features**  
The visual clues to help you ID homes from the street.
- 

**Commonly Found With**  
Some homes fit more than one type, we highlight common hybrids.
- 

**Common Problem in an Earthquake**  
A description of common damage patterns for the building type.
- 

**Next Steps**  
Spoiler Alert! It's always to take the quiz.



## ABAG Local Government Services

- ABAG POWER
- BayREN
- SF Estuary Partnership
- ABAG Finance Authority (FAN/ACFA)
- Regional Trails Program (Bay and Water Trails)



## ABAG POWER Natural Gas Program



### About

- 22<sup>nd</sup> Year of Operation
- Local Gov't Leadership in Energy Procurement / Management
- Natural Gas Purchasing & Transportation
- 38 Participating Members



### Program Goals

- Cost Savings
- Price Stability
- Services to Communities
- Environmental Sustainability

## Bay Area Regional Energy Network (BayREN)

- BayREN is a Program Administrator of Ratepayer Funds from the State PUC
- Successful climate, resource, and sustainability programs:
  - Single Family
  - Multifamily
  - Commercial
  - Codes & Standards
  - Water Bill Savings
- By coordinating efforts at the regional level and delivering integrated solutions, RENs help State meet our aggressive climate change goals



### Single Family

- Free step-by-step technical assistance to consumers & contractors for energy & water efficiency programs
- Rebates, education & outreach

### Multifamily

- Technical assistance to property owners for energy upgrades & rebates

### Codes & Standards

- Advocacy & support for green building codes
- Trainings to governments on standards & best practices

### Commercial

- Options to assist business with energy projects

**BAY AREA** Regional Energy Network



## BAYREN - Recent ACKNOWLEDGEMENTS

### January 2019

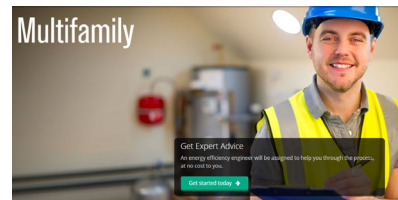
- Multifamily Program Recognized Nationally for Effectiveness and Innovation

### February 2019

- Commercial Program Partner, Mission Asset Fund, Nominated for Visionary of the Year

### December 2019

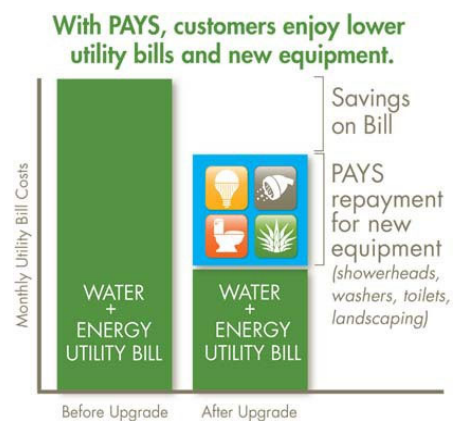
- PUC upgrades BayREN's status from Pilot Program (since 2013) to Permanent Status



## Water Bill Savings Program

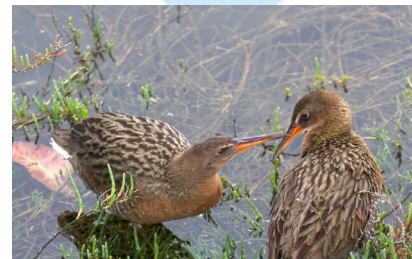
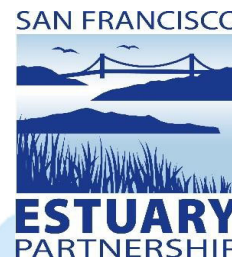
Allows water utilities to install eligible improvements field tested in Windsor, Hayward and with EBMUD

- No up-front payment, no new debt obligation, no credit checks, and no liens
- Monthly surcharge significantly lower than estimated savings
- Pay only while a utility customer at that location
- Guarantees that failed measures repaired or the payment obligation terminated



## SF Estuary Partnership

- Bolster resilience of ecosystems, shorelines, and communities to climate change
- Improve water quality/quantity of fresh water
- SF Bay Restoration Authority (\$25M/year)
- Champion the Estuary
  - ✓ Annual Conference
  - ✓ NEP Conference



[www.sfestuary.org](http://www.sfestuary.org)

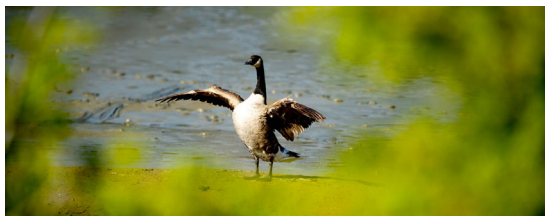
KM8

## Measure AA

In 2016, the nine-county San Francisco Bay Area's residents passed Measure AA, the San Francisco Bay Clean Water, Pollution Prevention and Habitat Restoration Measure with a 70% majority

KM9

- Parcel tax of \$12 per year, raising approximately \$25 million annually for twenty years to fund shoreline projects that would protect and restore San Francisco Bay
- Funds raised via Measure AA allocated by the San Francisco Bay Restoration Authority, created by the California Legislature in 2008
- Restoration Authority is staffed by the San Francisco Estuary Partnership, an ABAG Local Government Program and the State Coastal Conservancy





## FINANCE AUTHORITY

- Conduit financing to public and private entities in CA since 1978
- Secure means to meet the capital borrowing and financing needs of public agencies and their nonprofit partners
- New joint powers authority, the Advancing CA Finance Authority recently approved by ABAG Executive Board



## Successful Track Record

- Since 1978, \$8 billion in tax-exempt financing
- Financings constructed/preserved/refinanced
  - 12,000 units of housing
  - Schools
  - Hospitals and clinics
  - Water Districts
  - Municipal Infrastructure
  - Museums
  - CFDs



## Key Benefits

- Simple, fast and low-cost financing
  - Proven Track Record
  - Experienced Staff
  - Streamlined Approvals Process
- Staff expertise in local land use/housing issues
- Fee revenue supports ABAG and its Local Government Services

## San Francisco Bay Trail



- Vision connecting 9 counties via 500 miles of bike/pedestrian paths
- Links 47 cities and over seven toll bridges
- 360 miles (72%) complete



## San Francisco Bay Trail



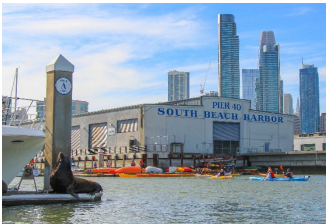
- Initiated in 1989
- Three ABAG/MTC staff and a 30-member non-profit board coordinate completion
- Cost \$1.4 billion to close remaining gaps, with \$230 million in funding needs over next five years

## Bay Area Water Trail



- A network of launching and landing sites around the Bay for non-motorized small boats
- Links over 500-square miles of navigable waters -- by far the region's **largest open space**

## Bay Area Water Trail



- One full-time staffer since 2011
- Provides expertise and relationships with partners to continue this work
- Produces and provides high-quality planning documents, stakeholder outreach and services, and grants management



## Questions?