

**Metropolitan Transportation Commission  
Programming and Allocations Committee**

January 8, 2020

Agenda Item 3b

**MTC Resolution No. 4347, Revised**

**Lifeline Transportation Program Cycle 5: Participatory Budgeting Pilot**

---

**Subject:** A request to program \$600,000 in State Transit Assistance funds from the Participatory Budgeting (PB) Pilot Reserve to the San Francisco Municipal Transportation Agency's Bayview Community Based Transportation Plan Participatory Budgeting Pilot – Bayview Transit Assistants project.

**Background:** MTC's Lifeline Transportation Program (LTP) funds projects that improve mobility for the region's low-income communities. The program is administered by the nine County Transportation Agencies (CTAs), and in Santa Clara County via a joint arrangement between the CTA and the County.

In January 2018, MTC adopted Resolution No. 4309, which established guidelines for Cycle 5 of MTC's Lifeline Transportation Program. A voluntary participatory budgeting pilot reserve of \$1 million was introduced in Cycle 5 to identify elements of the participatory budgeting process that could be scalable to planning at the regional and county levels. Participatory Budgeting (PB) is a democratic process in which community members decide how to spend part of a public budget. The PB process was integrated into and conducted as part of an overall Community Based Transportation Planning (CBTP) process.

State Transit Assistance funds were reserved for projects identified through the PB process. Two CTAs, the San Francisco County Transportation Authority (SFCTA) and the Solano Transportation Authority (STA), submitted proposals to participate in the Pilot. Based on the percentage of low-income residents in their two Communities of Concern areas, the \$1 million reserve was divided by 60% to San Francisco (\$600,000) and 40% to Solano (\$400,000).

San Francisco has completed their PB process and projects have been selected through the Bayview Hunter's Point Community Based Transportation Planning process. The SFCTA has concurred with the proposed projects and confirmed consistency with the Lifeline Transportation Program's goals. Staff is returning to the Commission to amend the specific projects for San Francisco into the LTP Cycle 5 Program.

Solano is currently implementing their PB process through the Vallejo Community Based Transportation Plan. Staff will return to the Commission with Solano County's projects upon completion of their PB process anticipated in spring 2020.

**San Francisco PB Pilot Recommended Program**

As part of San Francisco's PB pilot, the San Francisco Municipal Transportation Agency (SFMTA) led the PB pilot as part of its Bayview CBTP process. Bayview residents nominated projects, developed project proposals in collaboration with SFMTA staff, and established a Community Steering Committee that selected which projects to place on a ballot. Residents then voted on their priorities. The SFMTA is recommending the highest-ranked eligible project receive the \$600,000 in LTP funds.

Staff recommends programming \$600,000 to the Bayview Community Based Transportation Plan Participatory Budgeting Pilot – Bayview Transit Assistants project. This project will fund three new Transit Assistant (TA) positions through the Muni Transit Assistance Program (MTAP). The TA positions will focus on the Bayview and segments of the transit system Bayview residents ride on most frequently. The TAs aid transit riders, answer questions about transit service, deter vandalism, act as an unarmed safety presence on transit lines, and de-escalate conflicts between riders (often youth). TAs work in teams of two and their hours of operation are 10AM to 6PM. The three positions will be hired on a 3-year contract and will ride on the 29 Sunset, the 44 O'Shaughnessy, and the T-Third lines. The TAs funded through this project will be hired from the Bayview.

The recommended funding is part of the PB pilot program. Securing additional funding for the project is the responsibility of the project sponsor.

The recommended funding and projects are listed in Attachment A of MTC Resolution No. 4347 (attached).

**Recommendation:** Refer MTC Resolution No. 4347, Revised to the Commission for approval.

**Attachments:** MTC Resolution No. 4347, Revised

  
\_\_\_\_\_  
Therese W. McMillan

Date: July 25, 2018  
W.I.: 1311  
Referred by: PAC  
Revised: 12/19/18-C  
06/26/19-C  
01/22/20-C

ABSTRACT

Resolution No. 4347, Revised

This resolution adopts the FY2016-17 through FY2017-18 Program of Projects for MTC's Cycle 5 Lifeline Transportation Program, funded with State Transit Assistance (STA) and FTA Section 5307 Urbanized Area funds.

The evaluation criteria established in Resolution No. 4309 were used by the local entities administering the program to develop the program of projects.

The following attachments are provided with this resolution:

Attachment A — Cycle 5 Lifeline Transportation Program of Projects -  
FY2016 - 17 and FY2017-18

This resolution was amended on December 19, 2018 to program additional projects resulting from increased State Transit Assistance (STA) for Lifeline Cycle 5, and to program approximately \$5 million for Santa Clara County projects.

This resolution was amended on June 26, 2019 to program additional projects resulting from increased State Transit Assistance (STA) for Lifeline Cycle 5, and to program \$391,151 in State Transit Assistance funds to Marin Transit, which involves a funding exchange with local Measure AA funds through the Transportation Authority of Marin.

This resolution was amended on January 22, 2020 to program \$600,000 in State Transit Assistance funds from the Participatory Budgeting (PB) Pilot Reserve to the San Francisco Municipal Transportation Agency's Bayview Community Based Transportation Plan Participatory Budgeting Pilot – Bayview Transit Assistants project.

Further discussion of this action is contained in the Programming and Allocations Committee summary sheets dated July 11, 2018, December 12, 2018, June 12, 2019, and January 8, 2020.

Date: July 25, 2018  
W.I.: 1311  
Referred by: PAC

RE: Cycle 5 Lifeline Transportation Program of Projects – FY2016-17 and FY2017-18

METROPOLITAN TRANSPORTATION COMMISSION  
RESOLUTION NO. 4347

WHEREAS, the Metropolitan Transportation Commission (MTC) is the regional transportation planning agency for the San Francisco Bay Area pursuant to Government Code § 66500 et seq.; and

WHEREAS, MTC adopted Resolution No. 4309, which establishes program guidelines to be used for the funding and oversight of the Cycle 5 Lifeline Transportation Program, Fiscal Years 2016-17 and 2017-18; and

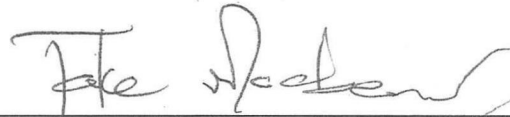
WHEREAS, MTC used the process and criteria set forth in Attachment A of Resolution No. 4309 to fund a Program of Projects for the Cycle 5 Lifeline Transportation Program with State Transit Assistance (STA) and Section 5307 Urbanized Area funds; and

WHEREAS, the Cycle 5 Lifeline Transportation Program of Projects is set forth in Attachment A of this resolution, attached hereto and incorporated herein as though set forth at length; now therefore be it

RESOLVED, that MTC approves the Program of Projects for the Cycle 5 Lifeline Transportation Program, as set forth in Attachment A of this resolution; and be it further

RESOLVED, that the Executive Director shall forward a copy of this resolution, and such other information as may be required, to the Governor, Caltrans, and to such other agencies as may be appropriate.

METROPOLITAN TRANSPORTATION COMMISSION

A handwritten signature in black ink, appearing to read "Jake Mackenzie", written over a horizontal line.

Jake Mackenzie, Chair

The above resolution was entered into by  
the Metropolitan Transportation Commission  
at a regular meeting of the Commission  
held in San Francisco, California, on July 25, 2018.

### Cycle 5 Lifeline Transportation Program of Projects (FY2016-17 and FY2017-18)

#	Project	Project Sponsor	Project Description					TOTAL Lifeline Funding	Notes
				STA (95%) <sup>1</sup>	STA (5% Conting.) <sup>1</sup>	STA (add'l revenue) <sup>4</sup>	5307		
<b>Alameda County</b>									
1	Preservation of Existing Services in Communities of Concern	AC Transit	The project aims to continue and improve transit service to several key Communities of Concern in the southern, central and northern portions of Alameda County. The routes (Route 20, 40, 51A, 51B, 72, 800, and 801) serve low-income communities that have been identified because of spatial gaps in service in the Community Based Transportation Plan (CBTP).	2,051,426	83,748		1,514,825	3,649,999	
2	Route 14 Operating Assistance	LAVTA	Wheels Route 14 provides service between the North Livermore Low Income Community and a variety of essential destinations including shopping, employment, healthcare, and direct regional rail connections via the Livermore Transit Center/ACE station and Dublin/Pleasanton BART station.	320,000				320,000	
3	Coliseum BART Elevator Renovation Project	BART	Renovation of two elevators at the Coliseum BART Station as part of Phase 1 for the Elevator Renovation Program. The project addresses the growing needs of aging equipment to provide safe, reliable, and operational elevators in an area servicing a community that is roughly 30% low-income.	720,000		104,940		824,940	(8)
4	Operations Support for Route 2	Union City Transit	The Route 2 is the main east-west route in the area that connects the Union City Intermodal Station with job centers along the Whipple Road corridor, which includes a lot of manufacturing and distribution facilities. The route provides vital lifeline public transportation access for the Decoto neighborhood, an established Community of Concern in Union City.	182,512		104,940		287,452	(8)

<b>County Bid Target</b>	<b>3,273,938</b>	<b>83,748</b>	<b>209,881</b>	<b>1,514,825</b>	
<b>Proposed Programming</b>	<b>3,273,938</b>	<b>83,748</b>	<b>209,880</b>	<b>1,514,825</b>	<b>5,082,391</b>
<b>Unprogrammed Balance</b>	<b>-</b>	<b>-</b>	<b>1</b>	<b>-</b>	<b>1</b>

<b>Contra Costa County</b>									
5	Preserve Operations in Central County Communities of Concern	County Connection (CCCTA)	Maintain existing services on routes in low income areas in Central Contra Costa County. The identified routes link low-income riders with employment centers, schools, retail and services.	752,666			14,057	766,723	
6	Pittsburg Bay Point Elevator Replacement	BART	Renovation of two elevators at the Pittsburg/Bay Point/Antioch BART Station as part of the Elevator Renovation Program. The project addresses the growing needs of aging equipment to provide safe, reliable, and operational elevators in an area servicing a Community of Concern.	-			954,259	954,259	
7	Preserve Operations in West County Communities of Concern	AC Transit	Maintain existing service on Lines 71, 76, 376, 800. These routes provide basic transportation services to AC Transit riders, 70 percent of whom are low income. All lines serve and/or are predominantly located in Communities of Concern. All lines presently provide service to employment, services, retail, schools, health care and coordination to BART stations. Funding this project would preserve existing headways and service span.	1,090,123				1,090,123	
8	Contra Costa College Connection: Increase Frequency on C3 Operations	WestCAT	Increase frequency on Route C3, which operates between Hercules Transit Center and Contra Costa College in San Pablo. The Lifeline funding under this grant would allow WestCAT to decrease headways from 60 minutes to 30 minutes. WestCAT estimates the increased service will increase low income ridership 35-40% or approximately 26,000 new low income passenger trips annually.	250,000				250,000	
9	Preserve Operating Support for Routes 200 and 201	Tri Delta Transit	Route 200 operates between the Pittsburg/Bay Point BART Station, the veterans/county hospitals, and the county/court buildings in Martinez. Route 201 is a lifeline service operating between Pittsburg/Bay Point BART and Concord with stops at Mt. Diablo High School and John Muir Medical Center.		53,534	123,947		177,481	(10)

<b>County Bid Target</b>	<b>2,092,789</b>	<b>53,534</b>	<b>123,947</b>	<b>968,316</b>	
<b>Proposed Programming</b>	<b>2,092,789</b>	<b>53,534</b>	<b>123,947</b>	<b>968,316</b>	<b>3,238,586</b>
<b>Unprogrammed Balance</b>	<b>-</b>	<b>-</b>	<b>-</b>	<b>-</b>	<b>-</b>

**Cycle 5 Lifeline Transportation Program of Projects (FY2016-17 and FY2017-18)**

#	Project	Project Sponsor	Project Description					TOTAL Lifeline Funding	Notes
				STA (95%) <sup>1</sup>	STA (5% Conting.) <sup>1</sup>	STA (add'l revenue) <sup>4</sup>	5307		
<b>Marin County</b>									
10	Bus Stop Improvements	Marin Transit	This project will fund bus stop improvements and real time transit information signs in the Canal neighborhood of San Rafael and additional real time transit information signs at high usage stops in the City of Novato.	24,545	1,292		174,163	200,000	
11	Route 36 (funding exchange project)	Marin Transit	This project will support operations for Route 36 between Marin City and Canal that provides mobility for low-income residents (Funding exchange for three projects: Marin Transit's School Transportation Service in Novato, Marin County's Drake/Cole Pedestrian Improvements, and City of San Rafael's Canal Neighborhood Crosswalk Improvements.	351,867	8,337	30,947		391,151	(11)
<b>County Bid Target</b>				<b>376,412</b>	<b>9,629</b>	<b>30,947</b>	<b>174,163</b>	<b>591,151</b>	
<b>Proposed Programming</b>				<b>376,412</b>	<b>9,629</b>	<b>30,947</b>	<b>174,163</b>	<b>591,151</b>	
<b>Unprogrammed Balance</b>				-	-	-	-	-	
<b>Napa County</b>									
12	Imola Avenue/SR 29 Express Bus Improvement	Napa Valley Transportation Agency (NVTA)	Rehabilitation of the Park and Ride facility; and bicycle and pedestrian facilities on State Route 29 (SR-29) and Imola Avenue; northbound and southbound on/off ramps to serve Vine Transit express buses. Improvements will allow Vine Route 29, which provides service to the Vallejo Ferry Terminal and the El Cerrito del Norte BART station, to operate on the corridor.	295,846	7,567	20,911	150,398	474,722	(8)
<b>County Bid Target</b>				<b>295,846</b>	<b>7,567</b>	<b>20,911</b>	<b>150,398</b>		
<b>Proposed Programming</b>				<b>295,846</b>	<b>7,567</b>	<b>20,911</b>	<b>150,398</b>	<b>474,722</b>	
<b>Unprogrammed Balance</b>				-	-	-	-	-	
<b>San Francisco County</b>									
13	Expanding and Continuing Late Night Transit Service to Communities in Need	SFMTA	SFMTA will provide new late night service on the L Owl line along the Embarcadero to Fisherman's Wharf and continue providing Owl service on key segments of the 44 O'Shaughnessy line, 48 Quintara/24th Street Muni lines. This service provides transit access from a Community of Concern to activity centers.	1,732,392	44,315		801,563	2,578,270	
14	Wheelchair Accessible Taxi Incentive Program	SFMTA	This program provides financial incentives to increase the supply of accessible wheelchair ramp taxis available through the Paratransit program. The additional ramp taxis will be in general circulation, increasing mobility options citywide for wheelchair users.			75,000			(6)
15	Enhanced Shop-a-Round and Van Gogh Recreational Shuttle Service	SFMTA	SFMTA will provide Shop-Around Shuttle service that seeks to provide group van transportation to and from grocery stores with driver assistance in carrying grocery bags for seniors and individuals with disabilities who do not meet ADA program requirements. It provides service seven days a week with two pick-up times available			32,462			(6)
<b>County Bid Target</b>				<b>1,732,392</b>	<b>44,315</b>	<b>107,462</b>	<b>801,563</b>		
<b>Proposed Programming</b>				<b>1,732,392</b>	<b>44,315</b>	<b>107,462</b>	<b>801,563</b>	<b>2,685,732</b>	
<b>Unprogrammed Balance</b>				-	-	-	-	-	



### Cycle 5 Lifeline Transportation Program of Projects (FY2016-17 and FY2017-18)

#	Project	Project Sponsor	Project Description					TOTAL Lifeline Funding	Notes
				STA (95%) <sup>1</sup>	STA (5% Conting.) <sup>1</sup>	STA (add'l revenue) <sup>4</sup>	5307		
<b>San Mateo County</b>									
14	Daly City Bayshore Shuttle	City of Daly City (via SamTrans)	Provide a circulator shuttle service connecting the Bayshore neighborhood in Daly City with transit and important destinations in the western portion of Daly City. The shuttle is free for passengers and operates for 14 hours, Monday through Friday, providing 11 round trips.	300,000				<b>300,000</b>	
16	Operating Support for Expanded Route 17 Service	SamTrans	This project will continue funding the operation of existing Lifeline funded expanded fixed route service for SamTrans Route 17 on the Coastsides of San Mateo County. The expanded service provides service to Montara, additional peak commute period service, Sunday service, and later evening hours 7 days a week.	338,312				<b>338,312</b>	
17	Operating Support for SamCoast Service	SamTrans	This project will continue funding the operation of SamCoast, a general public demand response system on the Coastsides of San Mateo County centered in Pescadero.	203,220		25,420		<b>228,640</b>	(5)
18	San Mateo County Transportation Assistance for Low-Income Residents	Human Services Agency (via SamTrans)	The Transportation Assistance Program (TAP) will provide fares for public transportation (such as bus tickets or tokens and possibly bus passes) to low-income families and individuals who are receiving homeless and safety net services from a network of countywide provider agencies. The transportation assistance will assist clients with their transportation needs related to Self-Sufficiency and Family Strengthening activities such as: employment search, employment workshops, job interviews, emergency and health related needs, family counseling, trips to referral agencies, trips to homeless shelters, and housing search.	200,000		36,000		<b>236,000</b>	(5)
19	DriveForward Vehicle Loan Program, San Mateo County	Peninsula Family Services (via VTA)	The DriveForward Vehicle Loan Program provides low-interest auto loans to individuals who are unable to access affordably-priced consumer loan financing. The loans, coupled with financial education credit repair assistance, help address transportation barriers so that individuals can pursue efforts at self-sufficiency, including work, education, asset building, and job training.				275,000	<b>275,000</b>	
20	Menlo Park Crosstown Shuttle	City of Menlo Park (via SamTrans)	The Menlo Park Crosstown Shuttle is a proposed expansion to the current "Midday Shuttle" (M1-Menlo Midday and M2-BelleHaven routes), which has been providing the Belle Haven community and other neighborhoods with reliable local transit since 1998. The shuttle primarily serves the low-income community by providing all-day access to essential destinations not otherwise available.	150,000	30,480	13,865		<b>194,345</b>	(7)
21	Fixed Route 280	SamTrans	Route 280 provides vital connections which serve Communities of Concern between East Palo Alto, the Stanford Shopping Center, and the Palo Alto Caltrain Station. Route 280 provides residents of East Palo Alto access to public transit options for completing work trips without the use of an automobile.				276,311	<b>276,311</b>	

**County Bid Target      1,191,532            30,480            75,285            551,311**

**Proposed Programming      1,191,532            30,480            75,285            551,311            1,848,608**

**Unprogrammed Balance            -            -            -            -            -**

### Cycle 5 Lifeline Transportation Program of Projects (FY2016-17 and FY2017-18)

#	Project	Project Sponsor	Project Description					TOTAL Lifeline Funding	Notes
				STA (95%) <sup>1</sup>	STA (5% Conting.) <sup>1</sup>	STA (add'l revenue) <sup>4</sup>	5307		
<b>Santa Clara County</b>									
21	Bus Stop Enhancement Program	Valley Transportation Authority	This program will provide up to 100 new bus shelters, ADA enhancements, upgraded stop amenities such as benches, lighting, trash receptacles, and digital real-time displays at various bus stops located along high ridership corridors and in Community-Based Transportation Plan study areas.	2,405,763	40,815	101,083	1,581,482	<b>4,129,143</b>	(2)
22	Mobility Assistance Program (MAP)	Valley Transportation Authority	This program seeks to provide several reduced cost and no-cost transportation options to all qualified low-income individuals and families in Santa Clara County with an emphasis on CalWORKSs Program participants, older adult workers, and disabled and low income individuals. Programs include door-to-door rides, supporting public transit use with a focus on residents of MTC's designated Communities of Concern.	785,345	40,815	101,082		<b>927,242</b>	(2)

<b>County Bid Target</b>	<b>3,191,108</b>	<b>81,630</b>	<b>202,165</b>	<b>1,581,482</b>	
<b>Proposed Programming</b>	<b>3,191,108</b>	<b>81,630</b>	<b>202,165</b>	<b>1,581,482</b>	<b>5,056,385</b>
<b>Unprogrammed Balance</b>	-	-	-	-	-

<b>Solano County</b>									
23	Reduced Fare Local Taxi Program	Fairfield and Suisun Transit	The reduced fare Taxi Program provides a subsidized taxi for seniors or people with disability residing in Fairfield or Suisun City.	141,836				<b>141,836</b>	
24	SolTrans Route 1 - Maintain Lifeline Fixed Route Service	SolTrans	The funding request is for SolTrans fixed route 1 which services the communities of concern in Vallejo.	600,000				<b>600,000</b>	
25	Solano County Intercity Taxi Scrip Program	Solano Transportation Authority	The Intercity Taxi Card Program provides a subsidized taxi for seniors or people with disability residing in Solano County.	200,000				<b>200,000</b>	
26	SolanoExpress Blue Line Expanded Service (Fairfield)	Fairfield and Suisun Transit	The project will help fund expanded service for the new Solano Express Blue line which services several communities of concern between Pleasant Hill Bart and Downtown Sacramento.				236,460	<b>236,460</b>	
27	SolanoExpress Blue Line Expanded Service (Vacaville)	Fairfield and Suisun Transit	The project will help fund expanded service for the new Solano Express Blue line which services several communities of concern between Pleasant Hill Bart and Downtown Sacramento.				102,657	<b>102,657</b>	
28	SolTrans Route 2 - Maintain Lifeline Fixed Route Service (Vallejo)	Fairfield and Suisun Transit	The funding request is for SolTrans Fixed Route 2 which services the communities of concern in Vallejo.				300,929	<b>300,929</b>	
29	Solano Express	Fairfield and Suisun Transit and Solano County Transit (SolTrans)	The funding request is for Intercity Transit Service Blue, Green, Yellow, 80 and 85 servicing communities of concern.		24,093	53,375		<b>77,468</b>	(9)

<b>County Bid Target</b>	<b>941,836</b>	<b>24,093</b>	<b>53,375</b>	<b>640,046</b>	
<b>Proposed Programming</b>	<b>941,836</b>	<b>24,093</b>	<b>53,375</b>	<b>640,046</b>	<b>1,659,350</b>
<b>Unprogrammed Balance</b>	-	-	1	-	1



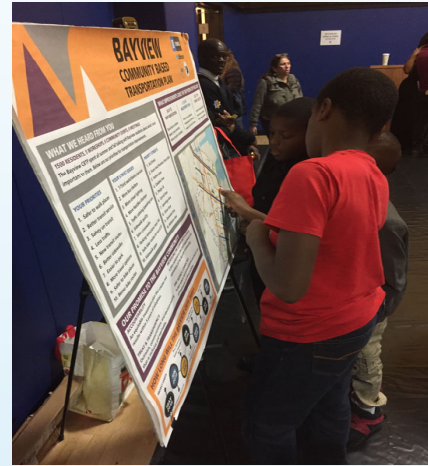
### Cycle 5 Lifeline Transportation Program of Projects (FY2016-17 and FY2017-18)

#	Project	Project Sponsor	Project Description					TOTAL Lifeline Funding	Notes
				STA (95%) <sup>1</sup>	STA (5% Conting.) <sup>1</sup>	STA (add'l revenue) <sup>4</sup>	5307		
<b>Multi-County &amp; Regional Projects <sup>3</sup></b>									
34	Bayview Community Based Transportation Plan Participatory Budgeting Pilot - Bayview Transit Assistants	San Francisco Municipal Transportation Agency (SFMTA)	The SFMTA will fund three new Transit Assistant positions through the Muni Transit Assistance Program (MTAP). Transit Assistants (TAs) aid transit riders, answer questions about transit service, deter vandalism, act as an unarmed safety presence on transit lines, and de-escalate conflicts between riders. TAs work in teams of two and their hours of operation are 10AM to 6PM. The three TA positions will be hired on a 3-year contract and will ride on the 29 Sunset, the 44 O'Shaughnessy, and the T-Third lines. The TAs funded through this project will be hired from the Bayview.	600,000				600,000	(12)
35	Participatory Budget Pilot Reserve - City of Vallejo Community Based Transportation Plan	TBD	Reserve funds for Participation Budgeting pilot projects that are recommended through Solano Transportation Authority's City of Vallejo Community Based Transportation Plan and PB Pilot program.	400,000				400,000	
<b>Multi-County &amp; Regional Target</b>				<b>1,000,000</b>				-	
<b>Proposed Programming</b>				<b>1,000,000</b>	-			-	<b>1,000,000</b>
<b>Unprogrammed Balance</b>				-	-			-	-
<b>Regional Grand Totals</b>									
<b>Lifeline Program Revenue Sources</b>				<b>15,190,842</b>	<b>363,006</b>	<b>890,164</b>	<b>6,805,264</b>	<b>23,249,276</b>	
<b>Total Proposed Programming</b>				<b>15,190,842</b>	<b>363,006</b>	<b>890,162</b>	<b>6,805,264</b>	<b>23,249,274</b>	
<b>Unprogrammed Balance</b>				-	-	<b>2</b>	-	<b>2</b>	

**Notes**

- (1) Because the FY 18 actual STA amounts will be confirmed by the State Controller after July 2018, only 95 percent of each county's STA amount will be available to be claimed by project sponsors until further notice. The County Lifeline Program Administrators programmed 95 percent of their county's STA amount, and then developed a contingency plan for the remaining five percent should it be available. Some agencies have contingencies unprogrammed.
- (2) On 12/19/18, Santa Clara County projects are being programmed.
- (3) Funds are being reserved for each PB Pilot program as listed. Specific projects will be amended and add into this Cycle 5 program, once projects have been recommended through the PB Pilot program process.
- (4) On 12/19/18, additional State Transit Assistance funds have been added to program due to higher than anticipated diesel sales tax revenue as a result of Senate Bill 1.
- (5) On 12/19/18, additional STA funds are being programmed to existing projects.
- (6) On 12/19/18, additional STA funds are being programmed to new projects in San Francisco County.
- (7) On 12/19/18, the 5% STA contingency and additional STA funds are being programmed to existing project in San Mateo County.
- (8) On 06/26/19, additional STA funds are being programmed to existing projects: \$104,940 for Coliseum BART Elevator Renovation, \$104, 940 for Operations Support for Route 2, and \$20,911 for Imola Avenue/SR 29 projects.
- (9) On 06/26/19, 5% STA contingency and additional STA funds are being programmed to new projects: \$77,468 for Solano Express in Solano County.
- (10) On 06/26/19, additional STA funds (\$123,947) and 5% STA contingency (\$53,534) are being programmed to a new project, Preserve Operating Support for Routes 200 and 201. The programming of \$53,534 in 5% STA contingency is conditioned on CCTA Board approval.
- (11) On 06/26/19, additional STA funds and remaining unprogrammed STA and 5% contingency funds are being programmed to Route 36 (funding exchange). The Marin County Lifeline Program Administrator (Transportation Authority of Marin (TAM) had originally programmed in STA funds \$75,151 for the School Transportation Service in Novato, \$68,000 for the Drake/Cole Pedestrian Improvements, and \$248,000 for Canal Neighborhood Crosswalk Improvements, but these three projects were found to be ineligible for STA funds. As a result, TAM pursued and approved a funding exchange with Marin Transit. Marin Transit will receive \$391,151 in STA funds for Route 36 and in exchange will give TAM, Measure AA Sales Tax Strategy 4: Local Busfunds to fully fund
- (12) On 01/22/20, Participatory Budgeting Pilot projects for San Francisco's Bayview Hunter's Point Community Based Transportation Plan were recommended and added into this Cycle 5 program, through the PB Pilot program process. The San Francisco Municipal Transportation Agency (SFMTA) will fund three new Transit Assistant (TA) positions through the Muni Transit Assistance Program (MTAP). The three TA positions will be hired on a 3-year contract and will ride on the 29 Sunset, the 44 O'Shaughnessy, and the T-Third lines.

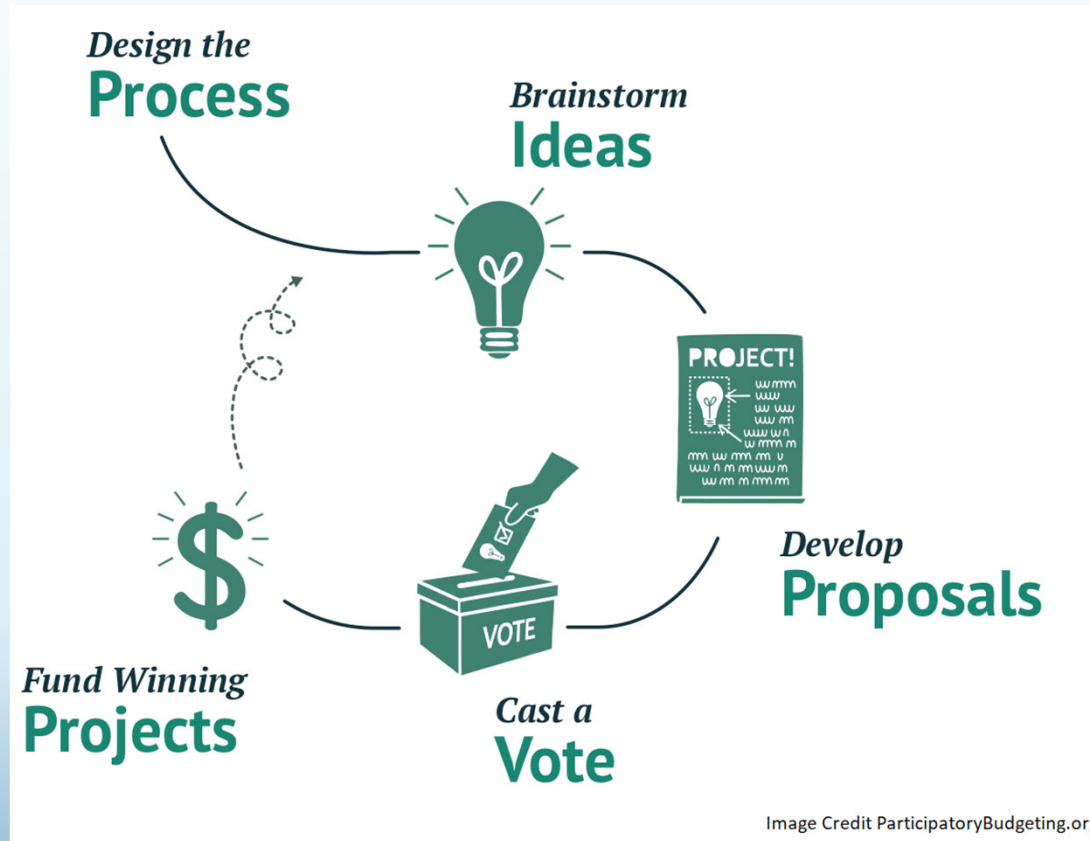
# Lifeline Transportation Program



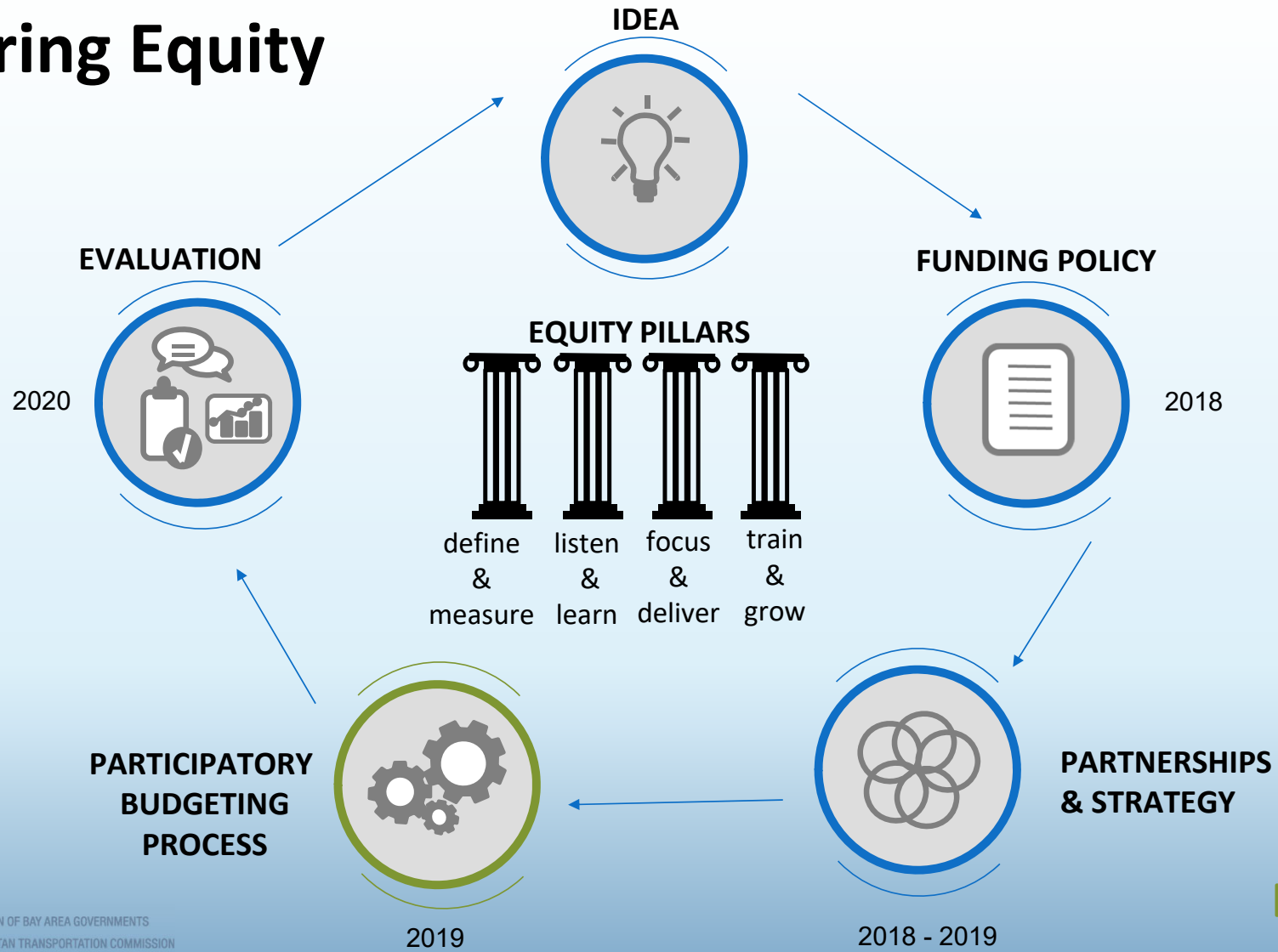
## Bayview Community Based Transportation Plan **PARTICIPATORY BUDGETING PILOT**

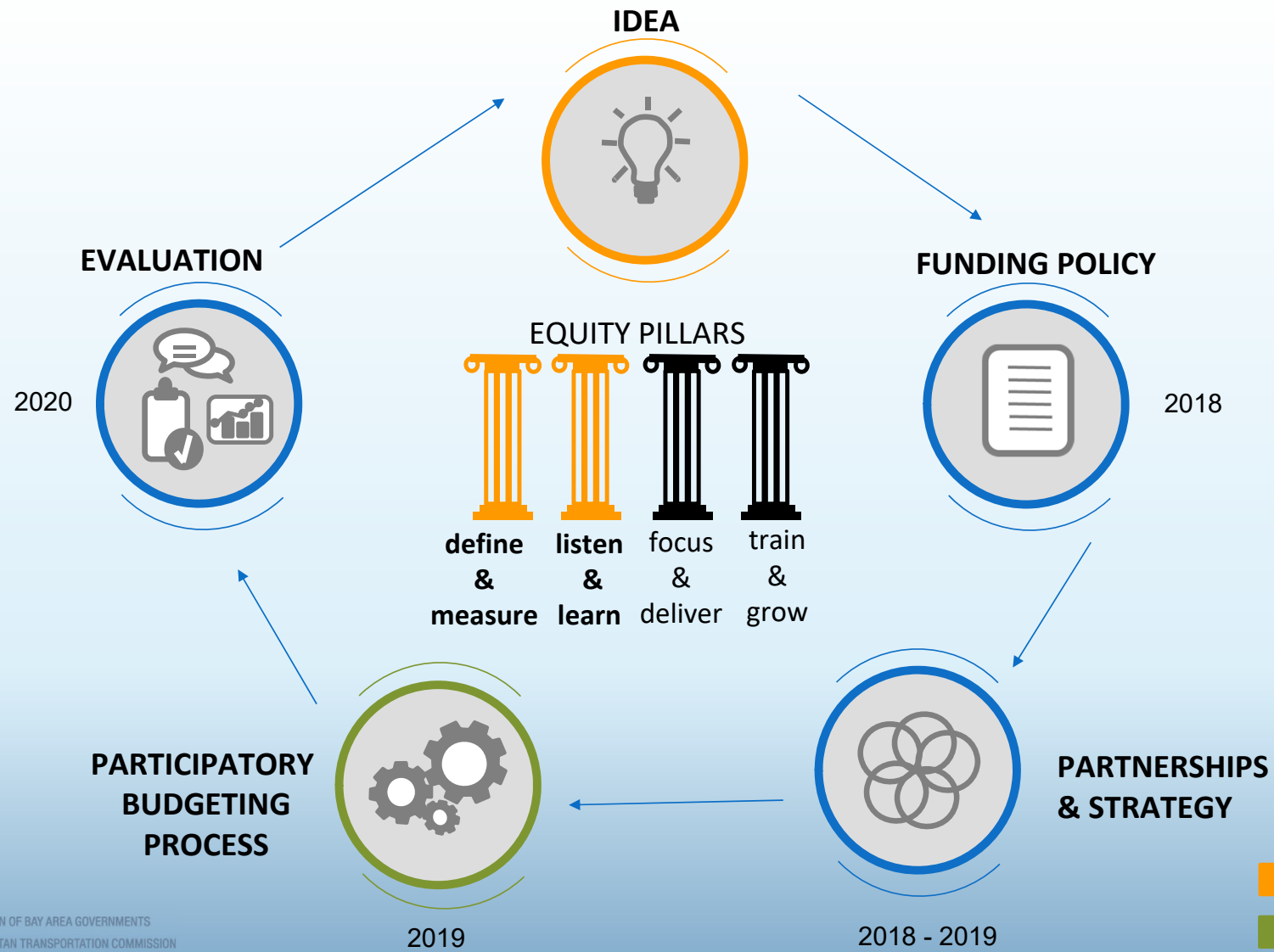
Programming and Allocations Committee  
January 8, 2020 – Judis Santos

# Participatory Budgeting Process



# Centering Equity

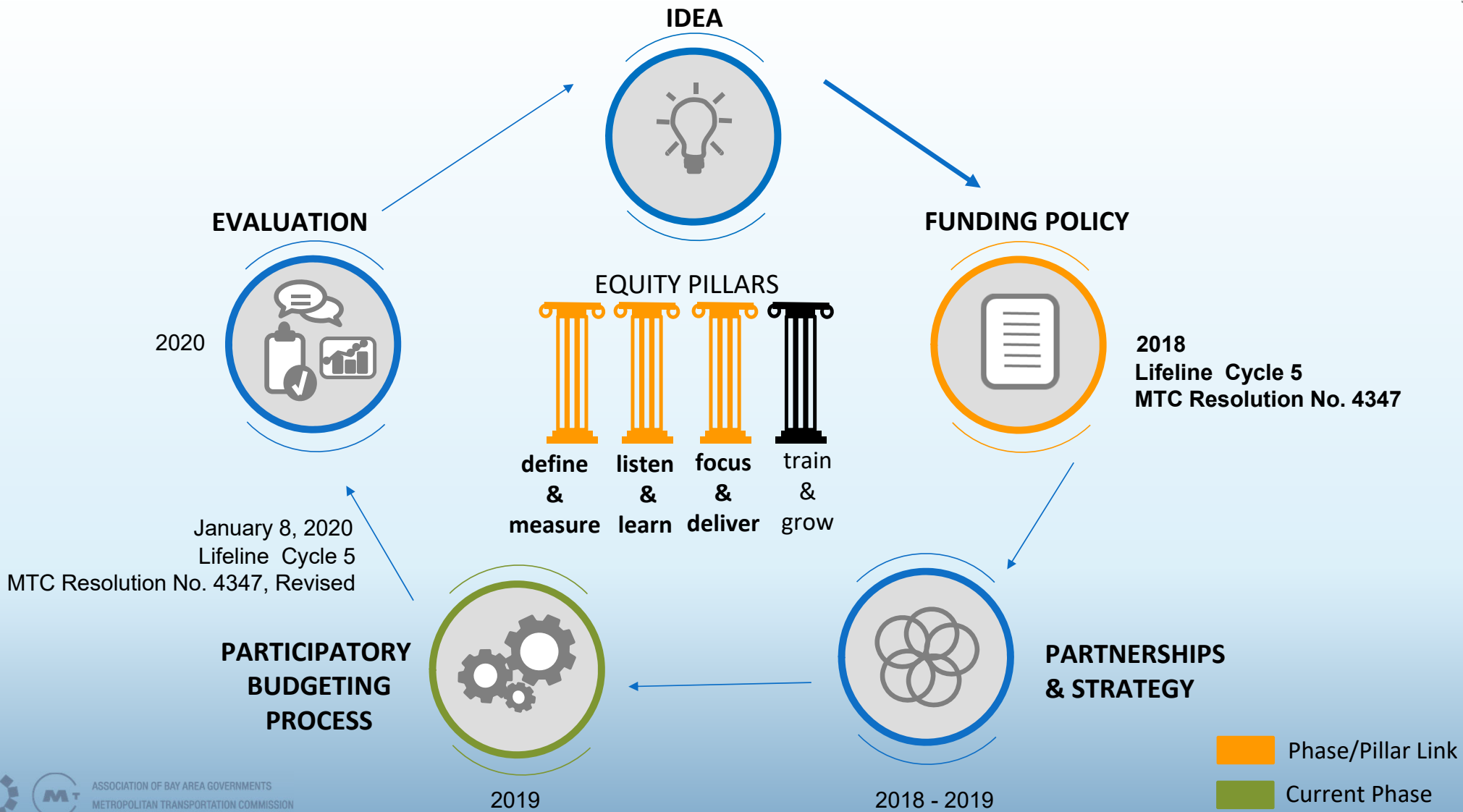


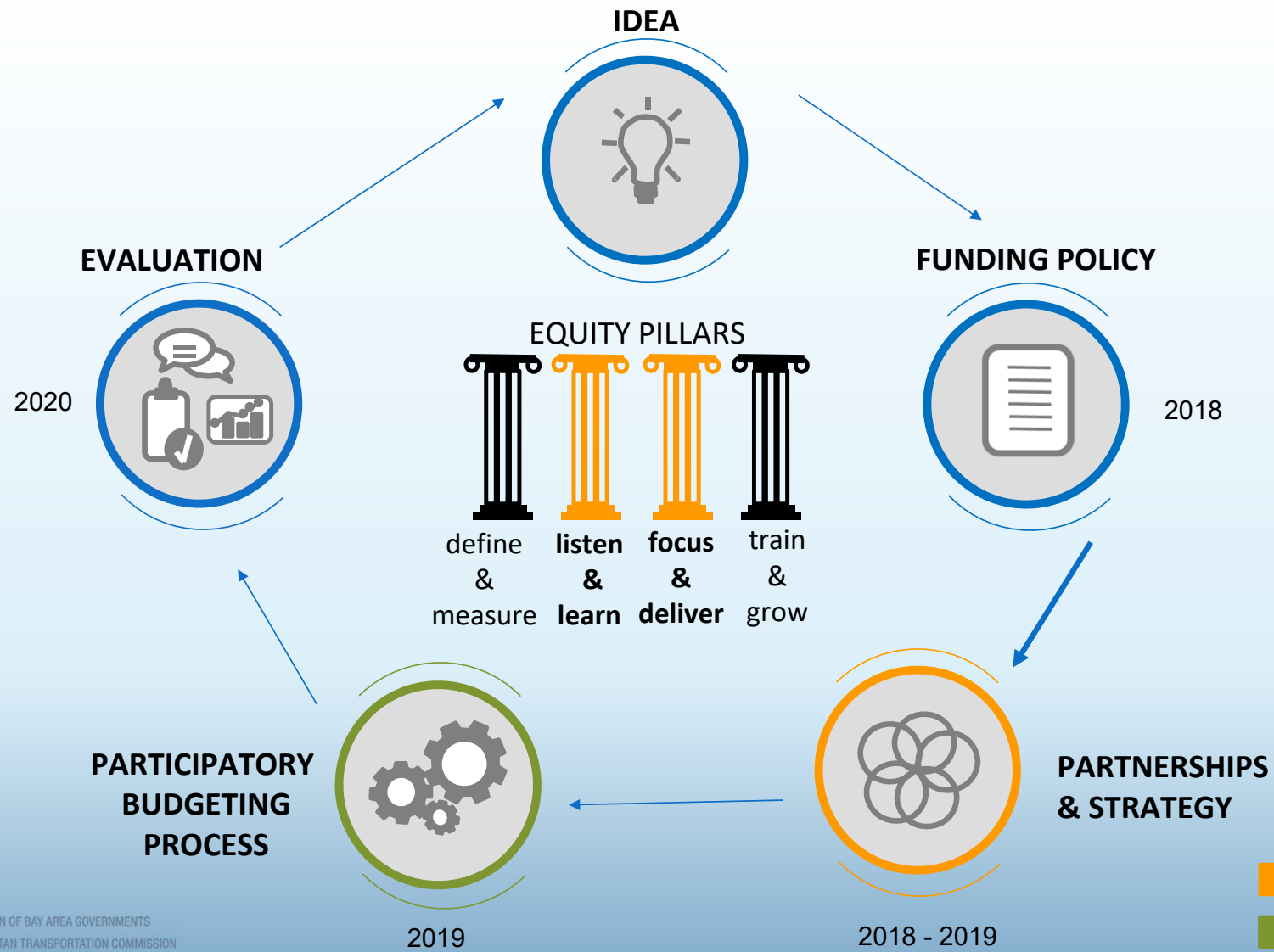


Phase/Pillar Link

Current Phase

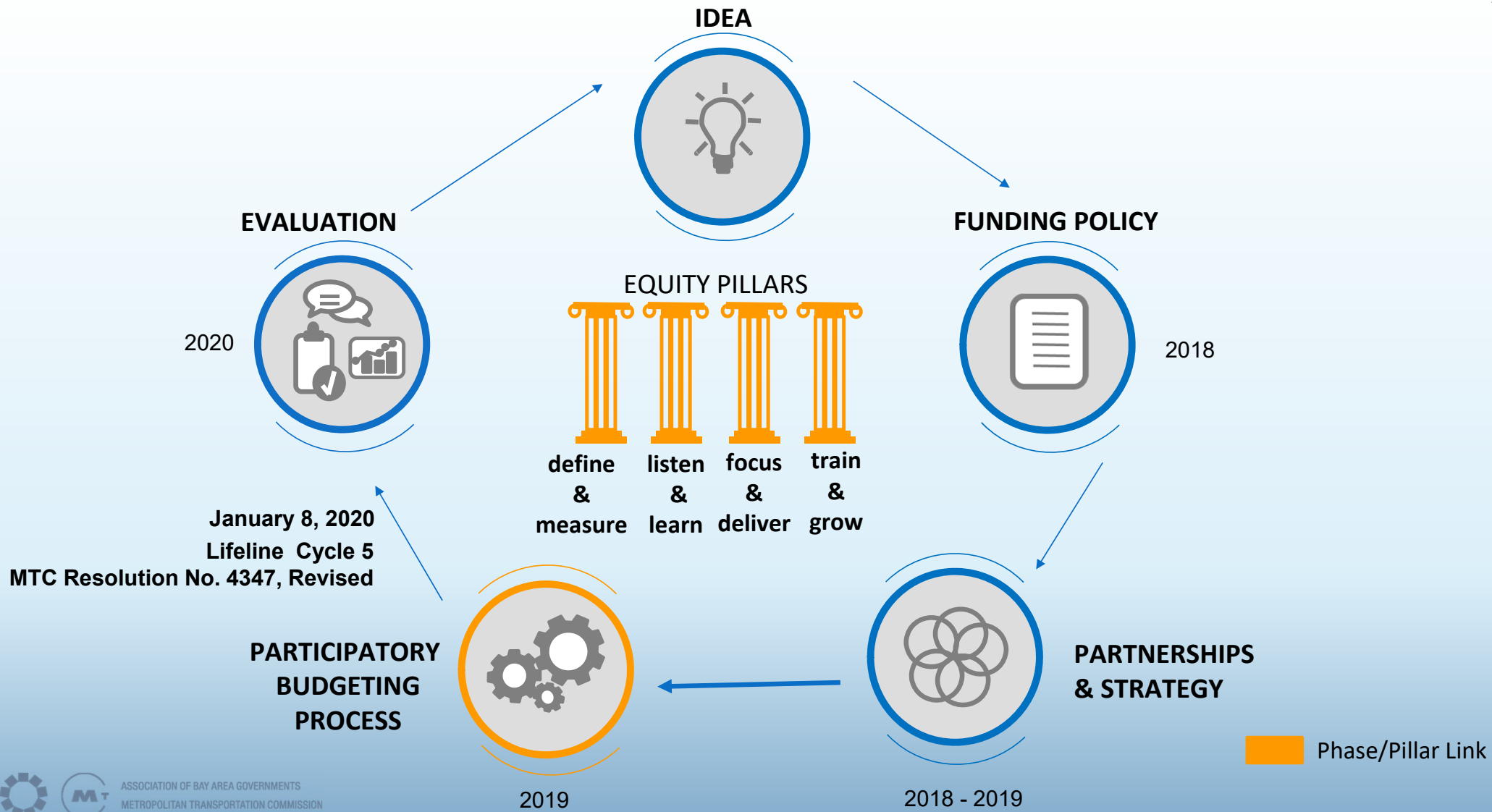


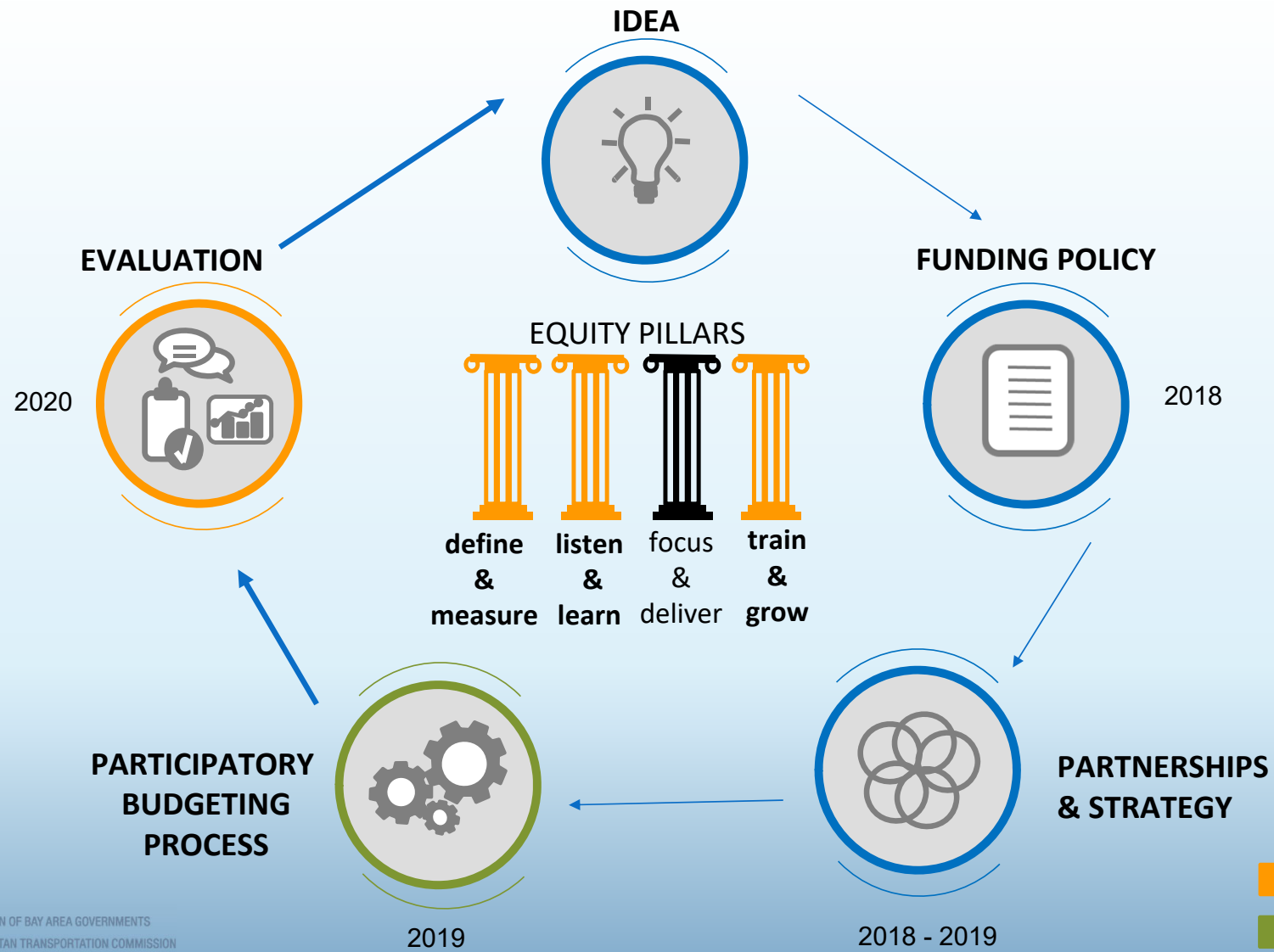




Phase/Pillar Link

Current Phase





Phase/Pillar Link

Current Phase

# Bayview Participatory Budgeting (PB) Pilot

- 14-member Community Steering Committee (compensated)
- Over 250 ideas
- Recruited residents to develop proposals
- 7-week vote period in summer
- 375 ballots submitted – voter demographics align with community demographics
- Recommended for PB Reserve funding: Bayview Transit Assistants Program



## Next Steps

- **Commission Action:** Approval of request to program \$600,000 from PB Pilot Reserve to the SFMTA Bayview Community Based Transportation Plan (CBTP) – Bayview Transit Assistants Project
- **PB Process** underway for Solano Transportation Authority, City of Vallejo. Anticipated Completion - Summer 2020
- **Present Evaluation Findings** from Bayview and Vallejo PB Pilots – Anticipated Summer 2020

## Participating CTAs

San Francisco County Transportation Authority/  
San Francisco MTA  
*Bayview Community Based Transportation Plan*



Solano Transportation Authority  
*Vallejo Community Based Transportation Plan*

