



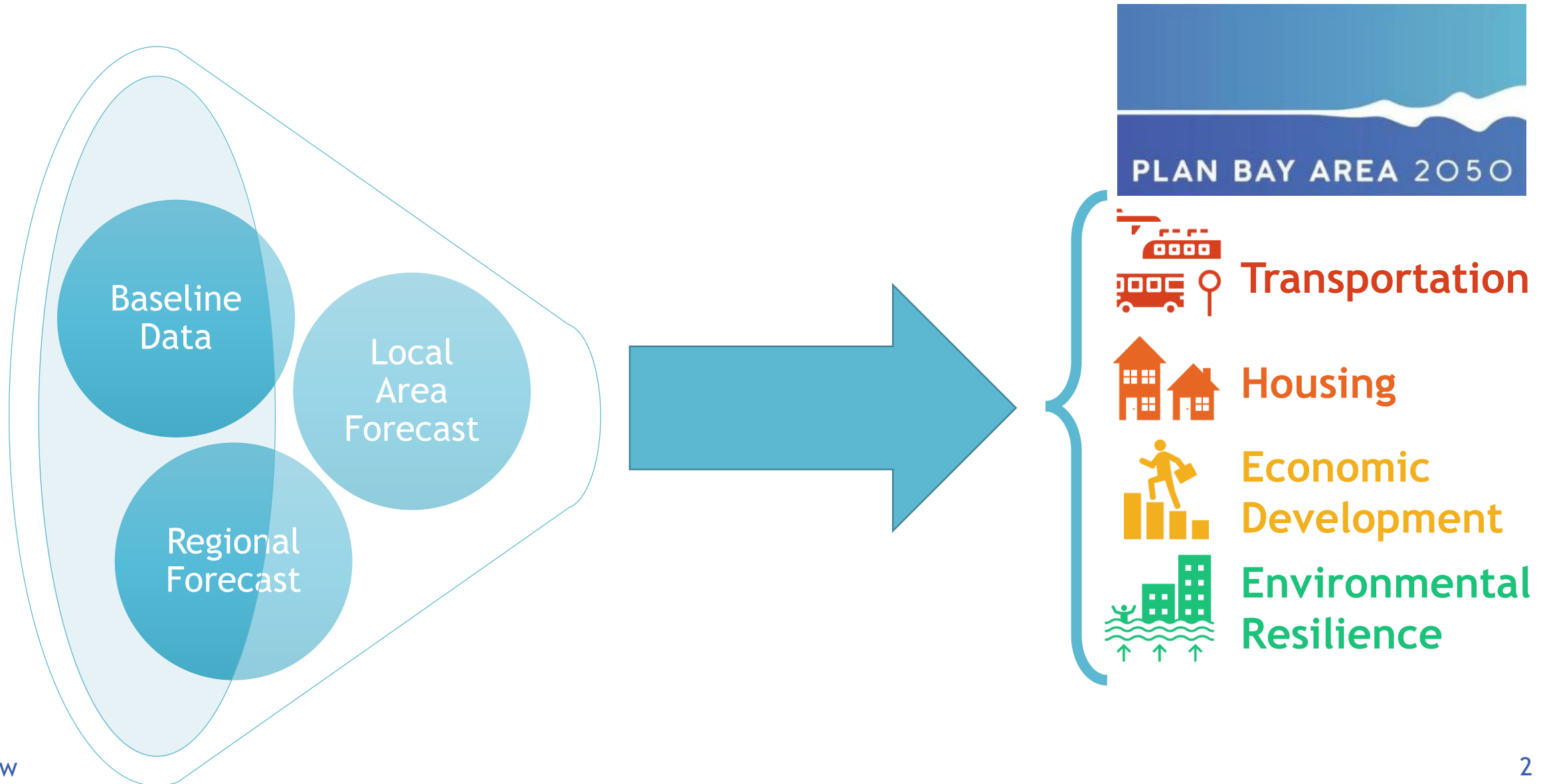
PLAN BAY AREA 2050

Regional Growth Forecast Methodology

Setting the Stage for Crafting Plan Bay Area 2050's
Growth Pattern

Cynthia Kroll, Kearey Smith, David Vautin - ABAG/MTC
July 2019

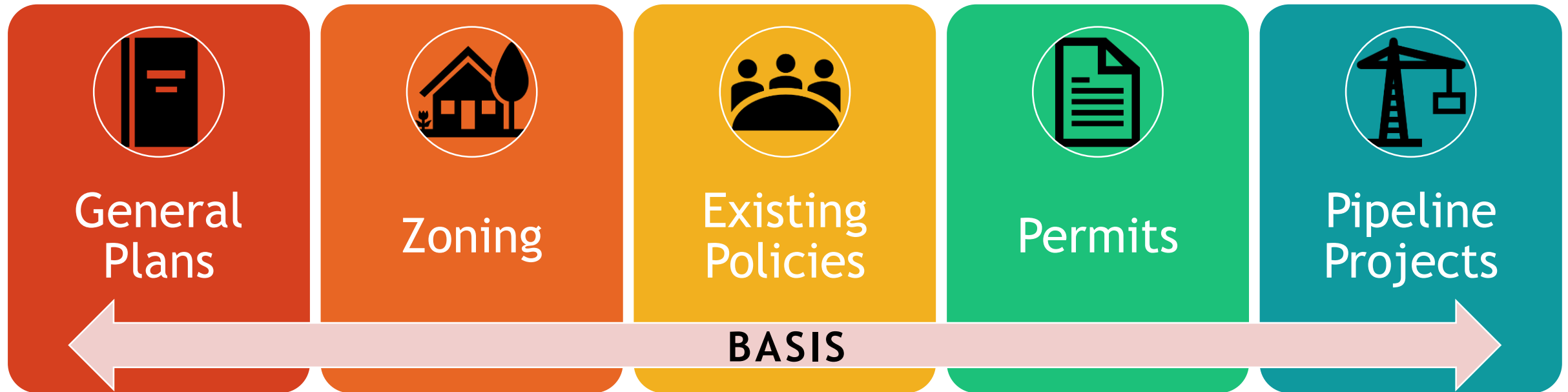
How Will We Forecast the Growth Pattern?



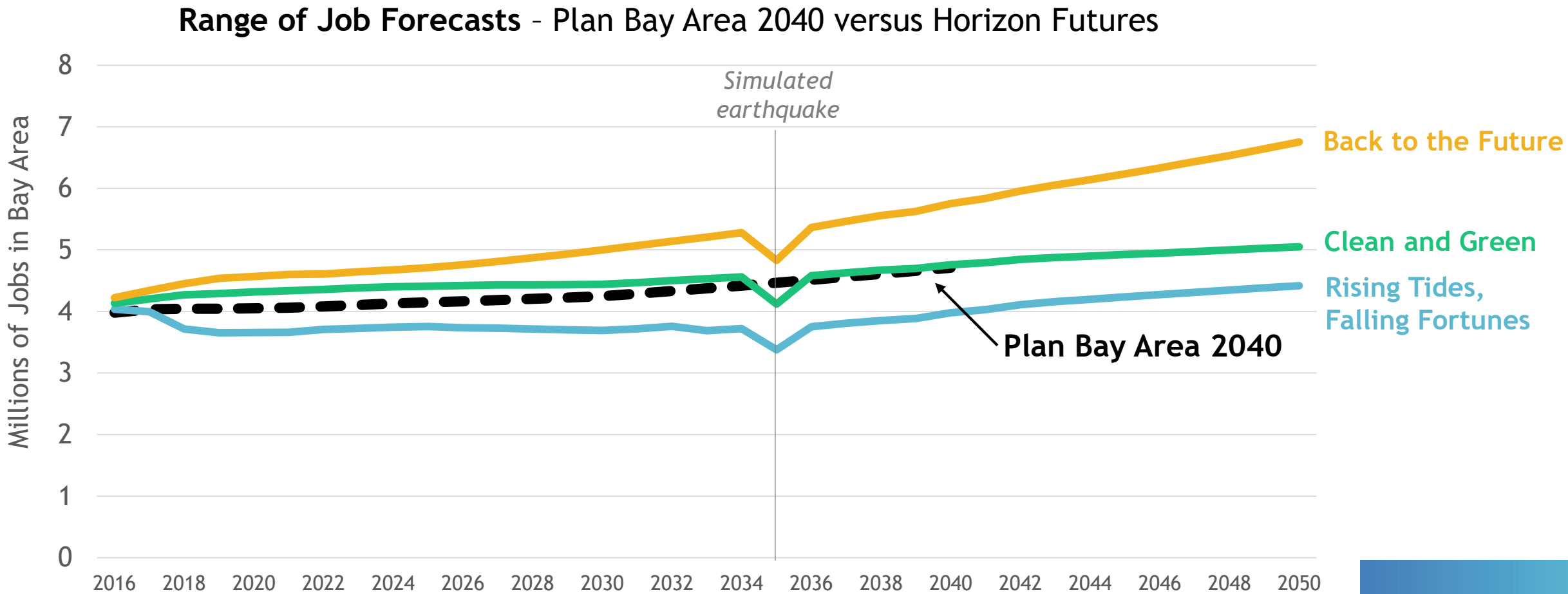
BASIS: Working to Improve Baseline Data

Baseline
Data

What datasets are specifically being updated at this time?



Exploring Uncertain Futures: What Have We Learned from Horizon?



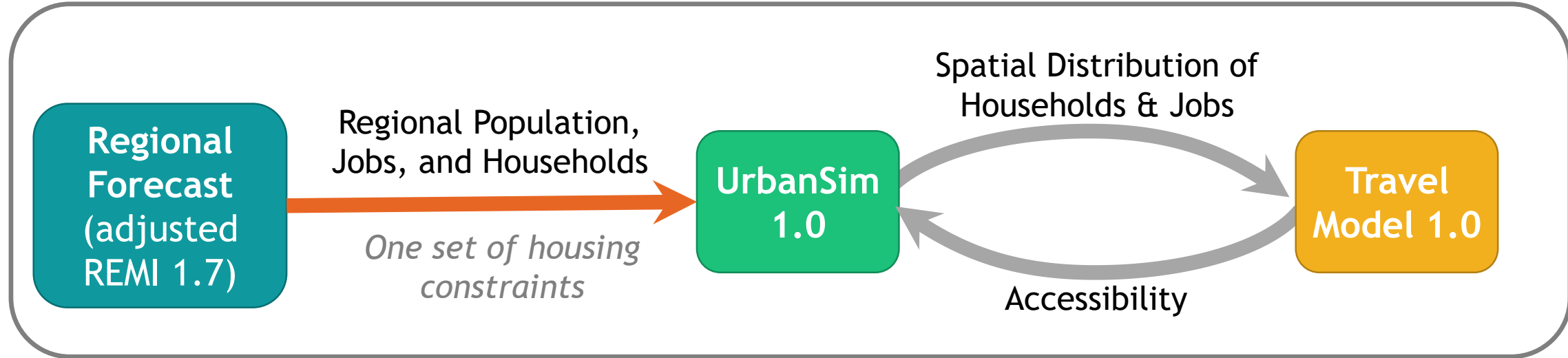
Pivoting to Plan Bay Area 2050: Developing the Regional Forecast

Regional
Forecast

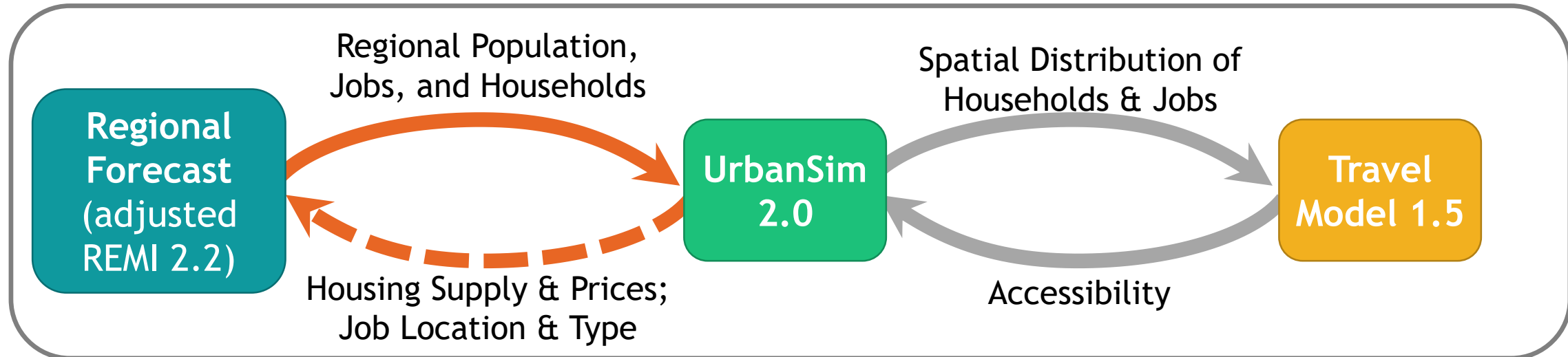
- Consulting with Center for Continuing Study of the California Economy (CCSCE) and a Technical Advisory Committee
- Tools to craft the Regional Growth Forecast
 - Regional Economic Models, Inc. (REM) version 2.2 - for the San Francisco Bay Area
 - Household + Income Model (*developed in-house*)
 - In-Commute Assessment (*developed in-house*)
- In general, our approach **builds upon the REMI model**, making adjustments when supported by further data analysis by ABAG/MTC or CCCSE.
- **Attachment A** provides additional technical information on the draft methodology under development.

Model Flow Chart: Interactive Approach

Plan
Bay
Area
2040

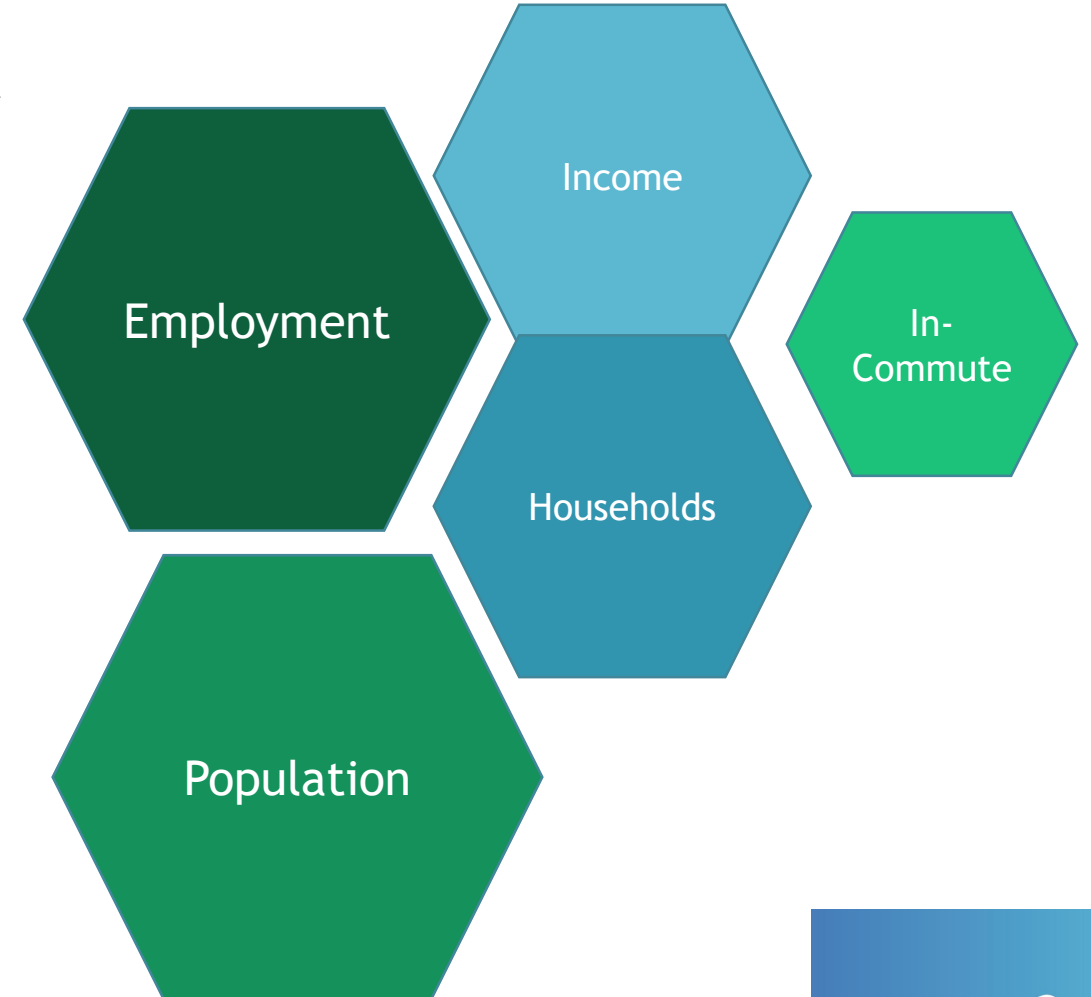


Plan
Bay
Area
2050
(draft)



Elements of the Regional Forecast

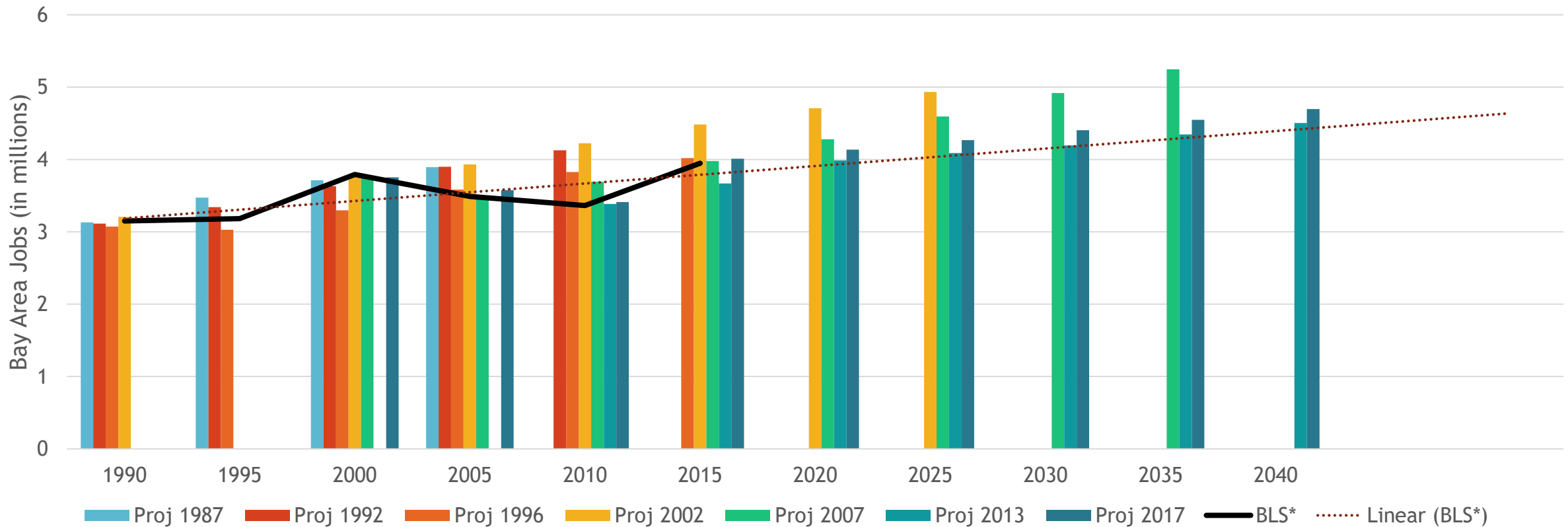
- **The Regional Growth Forecast** estimates employment and population, households by income category, and how much in-commuting may change.
- **Key underlying factors:**
 - Bay Area employment drivers: national growth, competitiveness and strength of key industries.
 - Population drivers: who is here today, economic conditions, immigration trends.
 - Household drivers: job growth, population growth, housing prices.



Understanding Job Predictions: Jobs are volatile

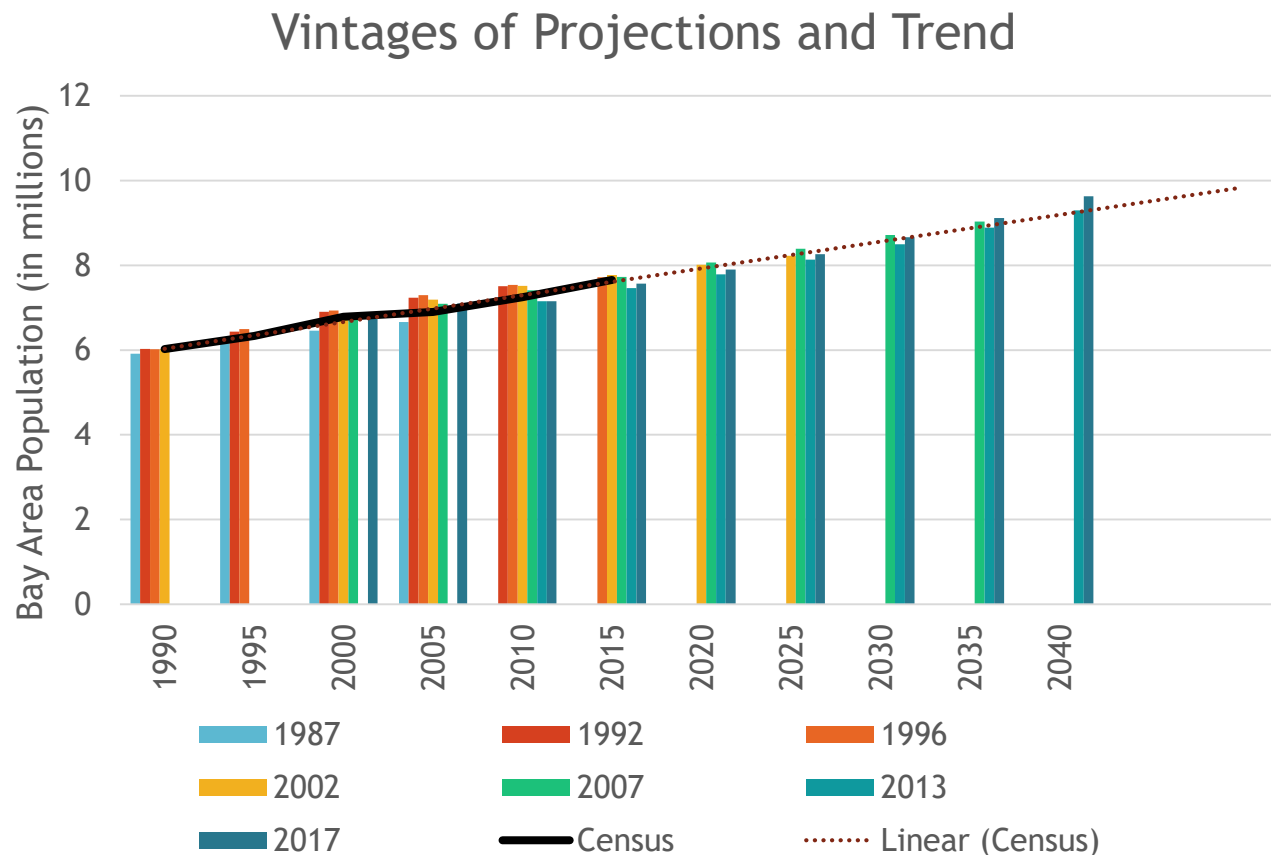
Regional
Forecast

Vintages of Projections Compared to Trend Line Forecast Since 1990



Population Less Volatile, More Predictable But small changes affect housing demand

Regional
Forecast



- Population age, ethnicity affect household numbers and size
- Immigration, income levels, and housing prices all affect how people choose to form households
- Both housing supply and economic prosperity affect household income.

Questions? Comments?

Contact Cynthia Kroll at
ckroll@bayareametro.gov

PLAN BAY AREA 2050

What's Next for the Regional Growth Forecast?

- Public Comment Period - through August 19, 2019
- Seek Methodology Adoption - September 19, 2019
- Draft Regional Growth Forecast - Fall 2019
- Final Regional Growth Forecast - Spring 2020