

# **Planning a more inclusive and resilient Bay Area for and with young people**

**Presentation to BARC Board**

**June 21, 2019**

**Deborah McKoy, PhD**

Executive Director, Center for Cities + Schools  
UC Berkeley

# Goals for Social Equity and Inclusion



1. **Why?** Need for diverse voices and perspectives for an equitable Bay Area
2. **How?** Y-PLAN civic learning strategy
3. **Where?** Three promising practices of Y-PLAN in action

# UC Berkeley Center for Cities + Schools

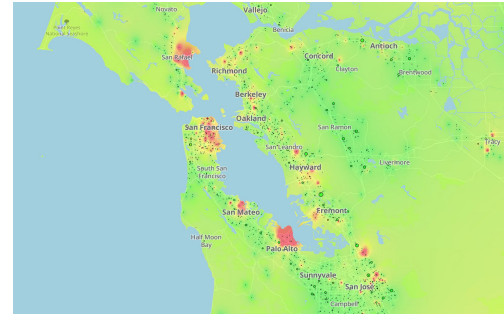


## Mission:

To promote high quality education as an essential component of urban and metropolitan vitality to create **equitable, healthy, sustainable** and **joyful** communities for all.

# I. **Why?** Lack of affordable housing and displacement has significant impact on schools

- Significant increase in **K-12 student homelessness** (15,000 reported in Bay Area in 2017)
  - Ravenswood in EPA is highest, 37% of student population is homeless
  - Oakland Unified, yearly increases, 400 in 2014-15 to 635 in 2015-16 to 901 in 2016-17 and growing
- Movement of low income families out of cities => **huge loss of funding** for local schools as educational funds follow students
- **Leads to significant transportation costs and long commutes** as students seeking to remain in former districts, when allowable, travel up to 4 hours in cars to/from school each day



***Homeless student hotspots***

# I. **Why?** Loss of teachers, racial and economic isolation within schools

## Regional crisis in teacher housing drives unprecedented levels of teacher turnover across Bay Area districts

- 3 out of 4 Oakland Unified teachers and staff do NOT expect to be able to live in Bay Area in coming 5 years

## Massive movement of families drives racial and economic isolation and lack of K-12 school diversity

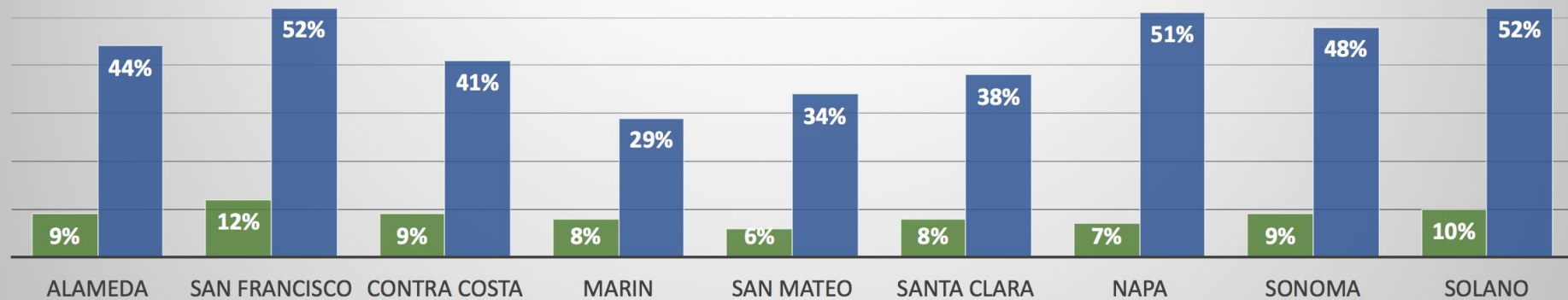
- A diverse workforce is needed to plan the future for all sectors of the economy, from technology to transportation, ensuring all voices and lived experiences inform our planning and public policy.



# I. Why? Concentration of Poverty in Counties and Public Schools

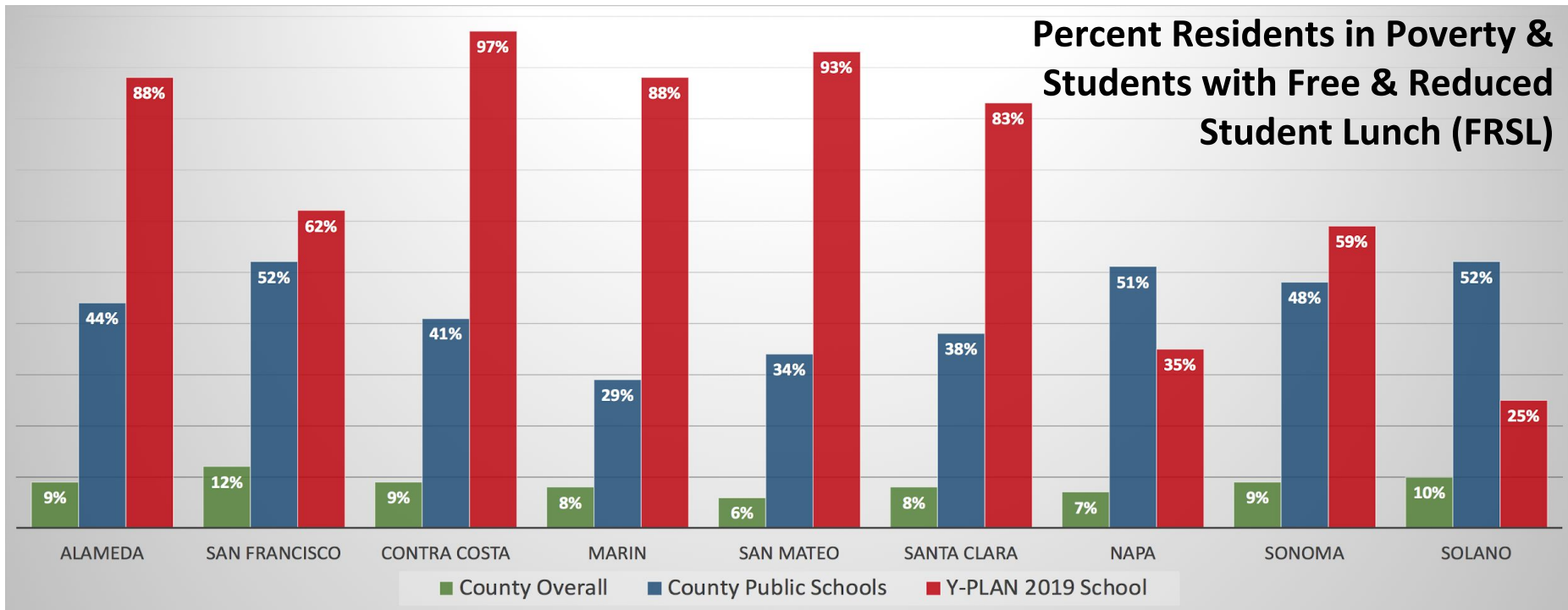
■ County Overall ■ Public Schools in the County

Percent Residents in Poverty & Students with Free + Reduced Student Lunch (FRSL)



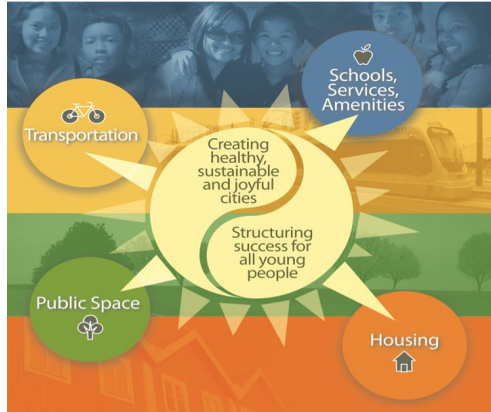
**Sources:** “Percent in Poverty” from US Census Quickfacts and “Percent Free and Reduced Price Meals” from EdData.org

# I. **Why?** Concentration of Poverty in Counties and Public Schools



**Sources:** “Percent in Poverty” from US Census Quickfacts and “Percent Free and Reduced Price Meals” from EdData.org

## II. **How?** Y-PLAN (Youth - Plan, Learn, Act, Now)



- **Civic learning global initiative** bringing young people and schools into the heart of city planning
  - UC Berkeley **seminar** & K-12 curriculum
- **Capacity building strategy** and tool for innovative, equity-focused policy
- **Intergenerational community of practice**





**CENTER FOR  
CITIES+SCHOOLS**  
UNIVERSITY OF CALIFORNIA BERKELEY

# WHY-PLAN?



CENTER FOR  
CITIES+SCHOOLS  
UNIVERSITY OF CALIFORNIA BERKELEY

# WHY-PLAN?

**How can my community prepare for climate change?**

**AND,** If we improve the community, will we still afford to live in it?

How can we feel safer biking and walking to and from school?

Why don't our bus stops have benches and provide shelter?

Why is there so much violence on our streets?

**Why are the conditions the way  
they are here, and not in  
another part of  
our city?**

# WHY NOT?

# What Makes Y-PLAN Different?

- Authentic Civic Client
- Classroom + Academic Based
- Social Justice + Equity Focused
- 5-Step Methodology
- Place-Based





CENTER FOR  
CITIES+SCHOOLS  
UNIVERSITY OF CALIFORNIA BERKELEY

# Y-PLAN

## Youth - Plan, Learn, Act, Now

### 5 STEP METHODOLOGY



## DOUBLE BOTTOM LINE

## III. Promising Practices Y-PLAN in Action

- *Y-PLAN Oakland:* BART
- *Y-PLAN Peninsula:* Cities of EPA + Menlo Park & Facebook
- *Y-PLAN Bay Area:* RbD & MTC/ABAG



**Project Question:** How can the Coliseum BART station be better connected with the surrounding community?

**Why Y-PLAN:** BART came to CC+S to have Y-PLAN assist with a problem: ridership is declining, particularly during off-peak hours. Commuters are taking BART to work, but BART sees room to expand their market to include people outside of this demographic, especially young people. BART has identified community connectivity as one way to increase ridership numbers among young people, and has asked the students of Skyline and Oakland High Schools to help them figure out how to best connect BART stations to the communities they serve.



## Civic Impact

### Short Term: Policy Action

- Youth age BART fare extended from 12 years old to 18 years old
- Addition of ticket machines that take small bills at stations in Oakland

### Long Term: Mindshift

- Demonstrated shift in Client's perceptions of the young black men they serve and the value they bring to planning
- **Summer internship** created for Y-PLAN student scholars

[Detailed Policy Brief](#)

# Y-PLAN Peninsula

Housing



**Project Question:** How can we stabilize Peninsula communities by making housing more affordable?

**Why Y-PLAN:** The Peninsula is facing a rapid increase in housing costs. As housing and rent prices around Silicon Valley rise due to an influx of tech workers, long-term residents, who are often people of color, are at risk of being displaced due to higher rents and cost of living.

Recognizing their own impact on the local housing economy, Facebook and the Cities of East Palo Alto and Menlo Park partnered with CC+S to support local high school students in researching current housing conditions in their region. Students conducted interviews, surveys, site mapping, and best practices research as they elevated the experiences of local residents and offered their own recommendations for change. See the Peninsula Story Map for this project at: [www.tinyurl.com/YPLANStoryMapSouthBay](http://www.tinyurl.com/YPLANStoryMapSouthBay)





[Detailed Policy Brief](#)

## Civic Impact

### Short Term: Policy Action

- Facebook listened to student recs on Accessory Dwelling Units and gave \$325,000 towards a \$1.1 million ADU project to fund 4 units through a partnership with local non profit Soup

### Long Term: Mindshift

- Sustained authentic partnership between young people and their Client
- FB/Peninsula Youth leadership network in development

# Y-PLAN Bay Area



## **Resilient by Design Project Question 2018**

How can young people inform climate resilient cities across the Bay Area?

## **MTC/ABAG Horizon Project Question 2019**

How can our schools and communities thrive in the year 2050?

**Why Y-PLAN** RbD saw a need to engage communities vulnerable to sea level rise and climate change. They partnered with CC+S to learn more about how young people could inform resilience and climate change planning. Through this process, it became clear that the Y-PLAN student scholars are already resilient and their lived experience is an untapped resource in addressing current inequities and planning for our future.

After RbD, it was a natural next step to partner with MTC Horizon and engage young people in all 9 Bay Area counties on the future of schools in 2050. Both RbD and MTC saw a need to work with young people to plan for the future they'll be living.

## Civic Impact

### Short Term: Policy Action

- Regional MTC/ABAG planners have been active in the classroom and at presentations putting young people at the forefront of resiliency and long-range planning
- Shift from foundation to government-funded partnerships with MTC/ABAG, SF Planning, LA County, and more

### Long Term: Mindshift

- Emerging analysis from Y-PLAN Horizon reveal youth-driven findings and insights on each of the four sectors: Transportation, Housing, Economic Development, and Resilience



# Insights and Recommendations for Civic Leaders



**1. Safety & Stability:** *While planning for the future, we also need consider basic needs of low-income young people today.*

**2. Mutual Understanding:** *Bring young people to the planning table.*

**3. Trust & Relationships:** *Take the time to build real connections with young people over time.*

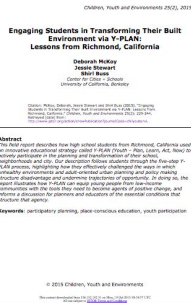
# Insights and Recommendations for Civic Leaders



**4. Power of Age and Place:** *Involve schools and students across the K-12 trajectory.*

**5. Real Tools:** *Engage young people using planning and policy tools, i.e., maps, terms, and practices.*

**6. Access to Opportunity:** *Build social network across the region to increase access to opportunity, share best practices, and provide resources.*



***The Critical Role of Young People and Schools in Resiliency Planning (forthcoming - July, 2019)***

***The Power of Civic Learning in a Resilient City (forthcoming white paper - Summer 2019)***

***Cultivating Inclusion, Belonging, and Agency in Young Black Men Through Civic Action Research (2019)***

***Connecting Coliseum BART to the Community Policy Brief (2017)***

***Engaging Students in Transforming Their Built Environment via Y-PLAN: Lessons from Richmond, California (2015)***

© 2015 CHILDREN, YOUTH AND ENVIRONMENTS

Reprints: 2015-2017 <http://www.cce.berkeley.edu/y-plan>



# Y-PLAN Scholars in the Media



Y-PLAN Student Scholars have also been featured this spring by:

- [San Jose Mercury News](#)
- [San Francisco Chronicle](#)
- [Patch.com](#)
- [The Almanac](#)
- [NBC News Bay Area](#)
- [Telemundo 48](#)
- KCBS News
- [The Press Democrat](#)\*
- [Marin Independent Journal](#)\*

\* student op-ed piece



**CENTER FOR  
CITIES+SCHOOLS**  
UNIVERSITY OF CALIFORNIA BERKELEY

# Questions + Dialogue

**Deborah McKoy**

**UC Berkeley Center for Cities + Schools**

[debmckoy@berkeley.edu](mailto:debmckoy@berkeley.edu)

[y-plan.berkeley.edu](http://y-plan.berkeley.edu)