

BARC Executive Director Update

Allison Brooks

BARC Governing Board

April 19, 2019



Bay Area
**Regional
Collaborative**

To Be Discussed

Project Updates

- Resilient by Design - transition
- ART Bay Area
 - Report on Work w/ BARHII and Community Partners

Developing Next BARC 2-Year Work Plan

- Revisit Organizational Plan and Role of BARC



Bay Area
**Regional
Collaborative**

Celebrating Success, Project transition



BAY AREA CHALLENGE

RESILIENT

BY

DESIGN



Celebrating Success

Awards

WTS SF Chapter – *Innovative Transportation Solutions Annual Award*

Project Awards:

Hassell+ (South SF)

- *Finalist in Fast Company's World Changing Ideas Awards*
- *Shortlisted in World Landscape Architecture's 2019 WLA Awards.*

Home Team (North Richmond)

- *ASLA Merit Award/Planning & Analysis*

Big+ONE+Sherwood (Islais Creek, SF)

- *ASLA – NY Merit Award*



Bay Area
**Regional
Collaborative**



Celebrating Success



Project Awards:

Public Sediment (Alameda Creek)

- *Archpaper Best of Design Award*
- *AIA California Council Merit Award in Urban Design*
- *ASLA-NY Honor Award*
- *American AIA Urban Design Merit Award*
- *Architects Newspaper Best of Design Award*



Bay Area
**Regional
Collaborative**



Celebrating Success

UC Berkeley's Center for Cities and Schools: Y-Plan Partnership with RbD

- Winner of Chancellor's Award for Public Service
- Students across Bay Area now participating in MTC/ABAG Plan Bay Area

Release of Book

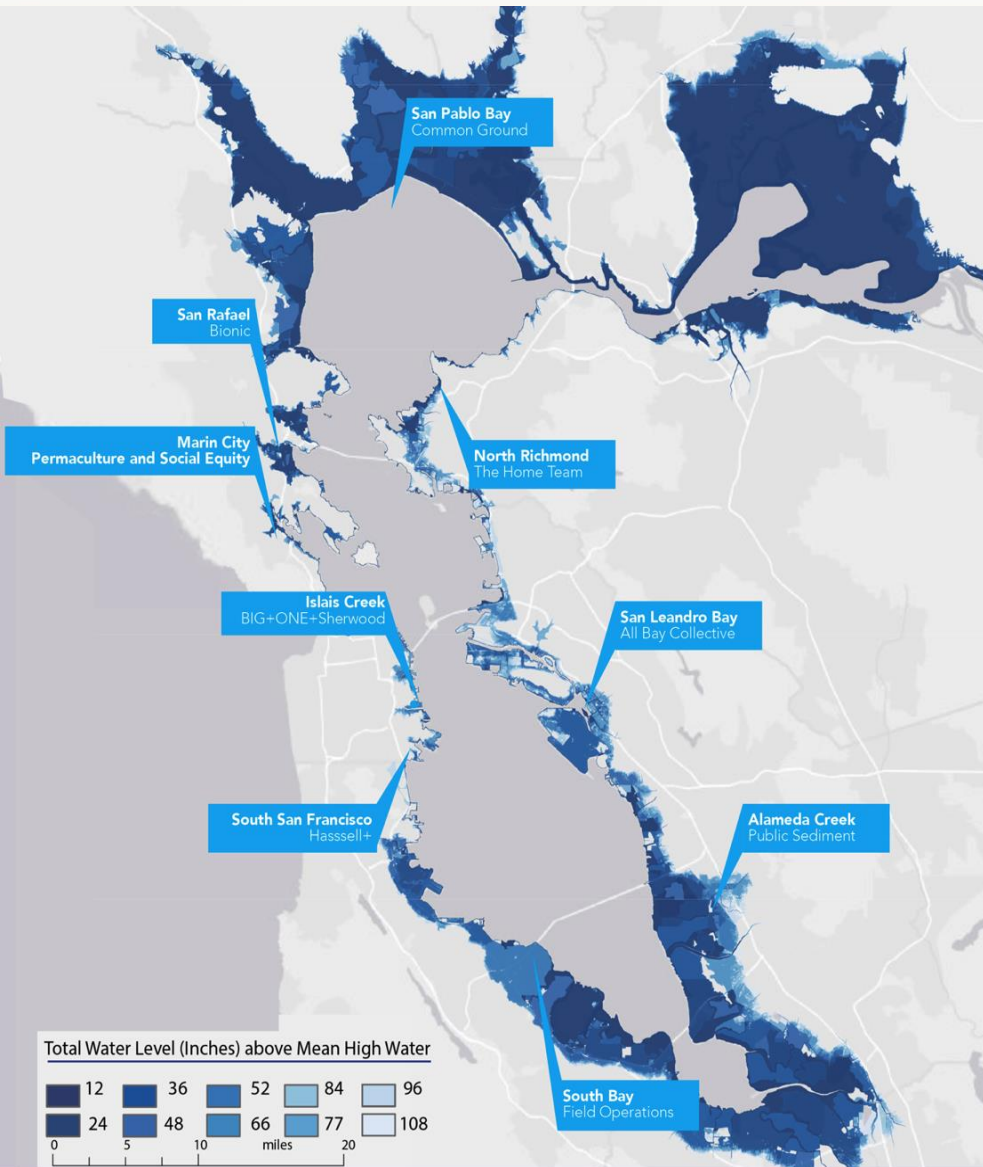
- Book launch party April 16th at Oakland SPUR offices



Bay Area
**Regional
Collaborative**



Project Implementation



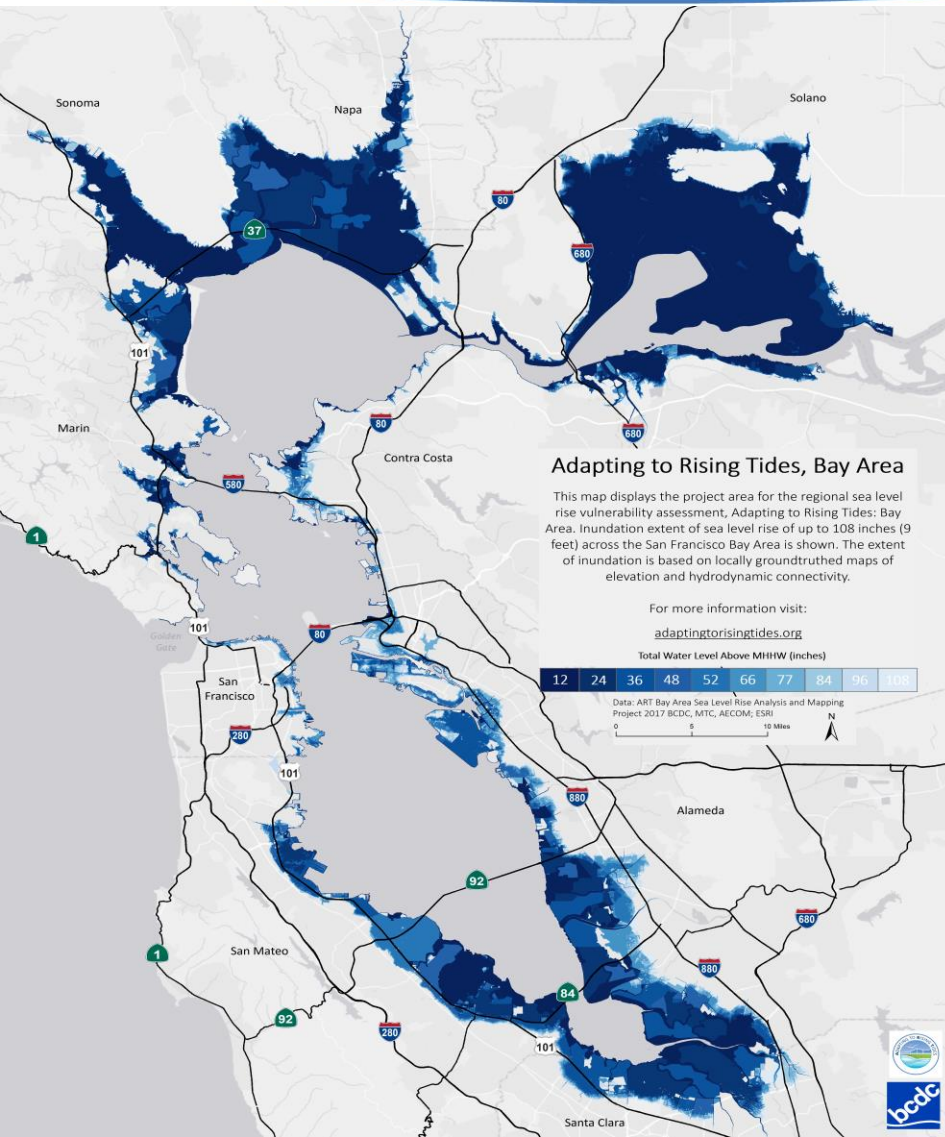
SB1 Planning Grants:

- ☐ **Resilient South City | HASSELL+**
South San Francisco (BARC/MTC)
- ☐ **The Grand Bayway | Common Ground**
San Pablo Bay (BARC/MTC)
- ☐ **Islais Creek | Islais Creek, San Francisco**

Other Grants & Funding:

- ☐ **Unlock Alameda Creek | Public Sediment** SCC lead
- ☐ **Peoples Plan | P+SET**
Marin City – SCC lead
- ☐ **Elevate San Rafael | Bionic Team**
Project integrated into City Climate Action Plan - SCC lead
- ☐ **ouR-HOME | The Home Team**
North Richmond – SFEP and the Watershed Project leading work

Project Update: ART Bay Area



- Complete regional-scale vulnerability assessment
- Establish framework for prioritization
- Increase public participation and local capacity for long-term effort
- Apply project results to related efforts - MTC's Horizon and Plan Bay Area 2050

ART Bay Area Asset Categories

Transportation Infrastructure



Priority Development Areas



Vulnerable Communities



Priority Conservation Areas (PCAs)

New Model for Community Partnerships with Frontline Communities

ART Bay Area

Working with *Bay Area Regional Health Inequities Initiative (BARHII)* and community based partners

- East Palo Alto: *Nuestra Casa, YUCA*
- East Contra Costa: *Ensuring Opportunity*

Level Playing Field

Build off learning underway with ART Bay Area, AB617 (led by BAAQMD), SB1 grants, and Resilient by Design



Bay Area
**Regional
Collaborative**

BARC 2-Year Work Plan

Next Steps:

- Revisit Role of BARC
- Build upon ongoing efforts, identify areas where coordination will be essential to achieving shared goals and outcomes



Bay Area
**Regional
Collaborative**

THANK YOU!

Allison Brooks

Abrooks@bayareametro.gov

(415) 778-5265



Bay Area
**Regional
Collaborative**