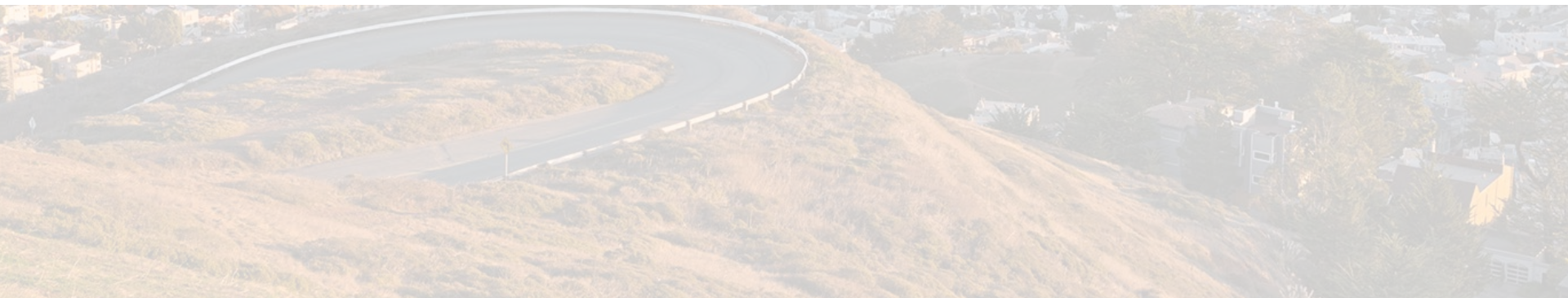




BARC Executive Director Update

BARC Governing Board
November 16, 2018



Overview

I. Resilient Bay Area

- ART Bay Area
- SB1 Awards: South San Francisco, North Bay/SR37, Dumbarton Bridget/East Palo Alto

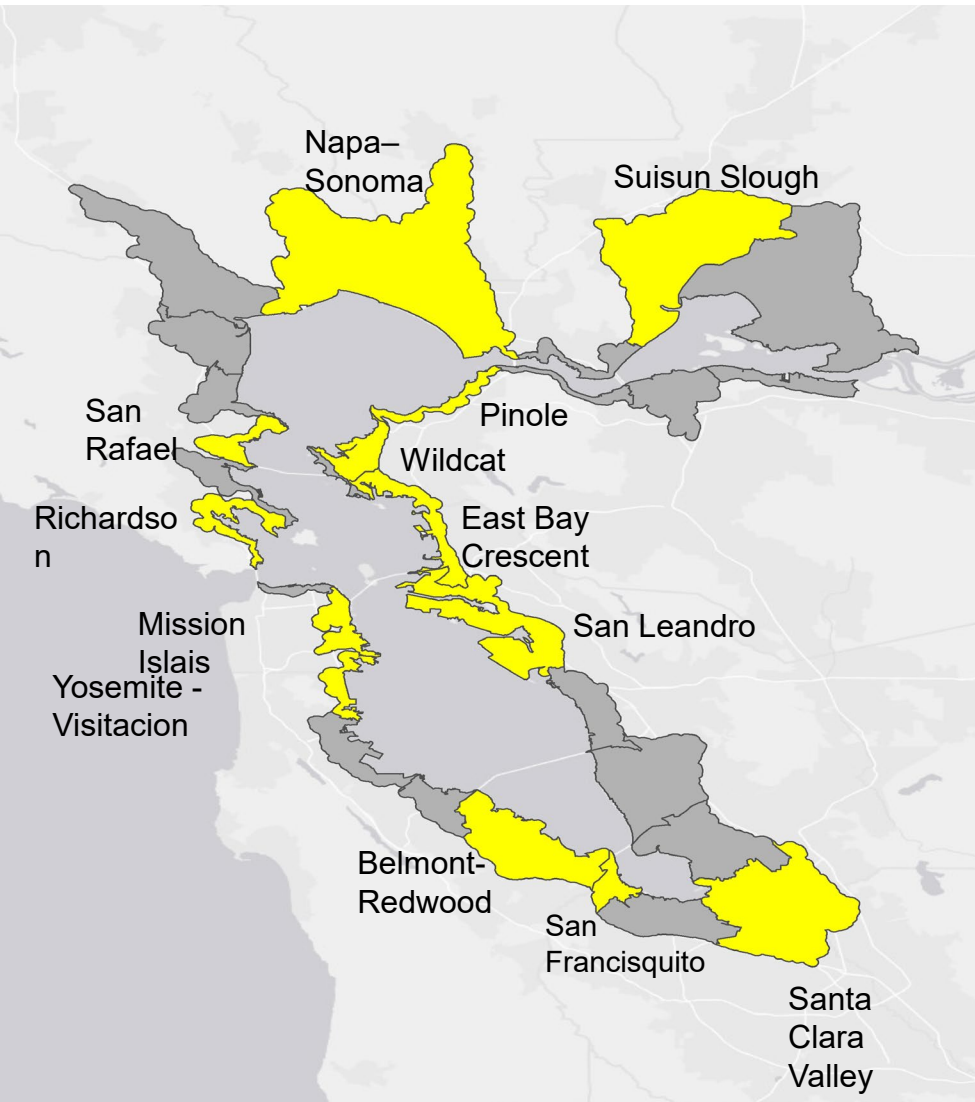
II. Level Playing Field

- Priority Communities Mapping

III. Carbon Free Future

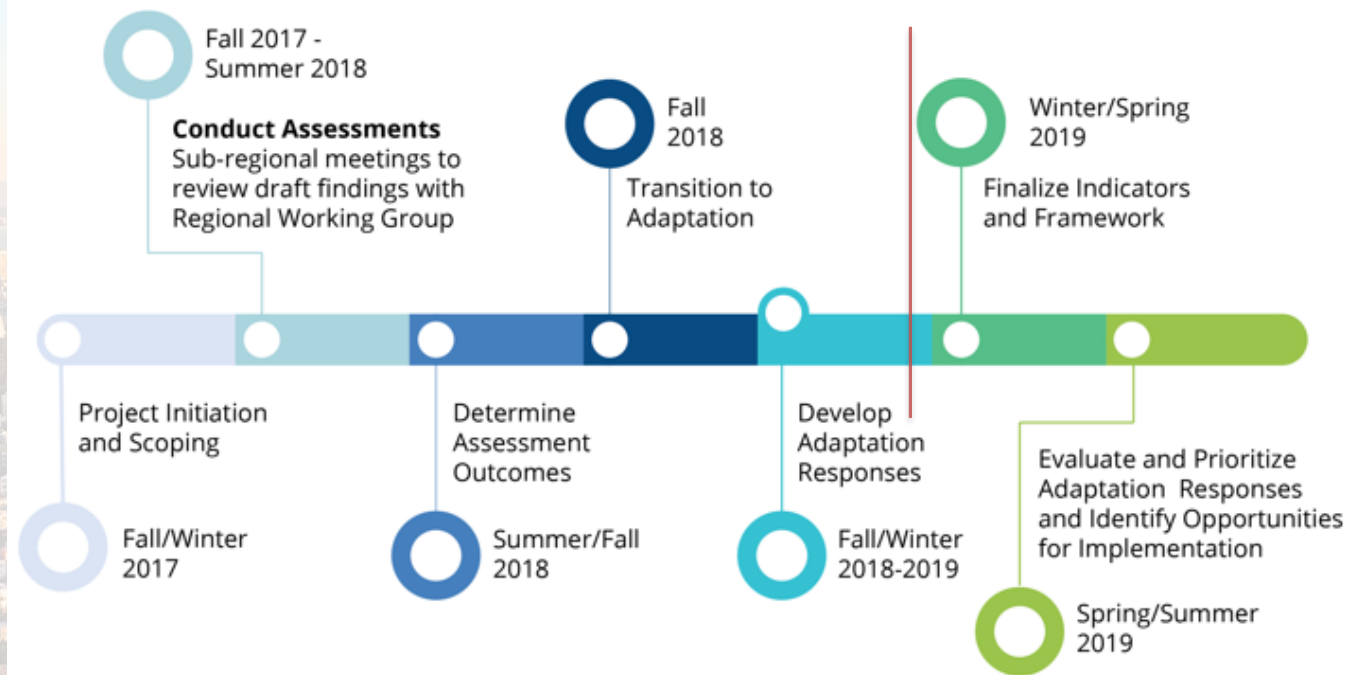
- BAAQMD, BayREN, BARC - Focus on existing buildings

ART Bay Area: Project Milestones



- Organizing vulnerability assessment results by Operational Landscape Units (OLU's) – 30 in Bay Area
- NatCap Partner: Completed coastal hazards damage assessments at each total water level (by census blockgroup)
- BARHII-led public participation
 - East Contra Costa (Pittsburg-Baypoint)
 - East Palo Alto

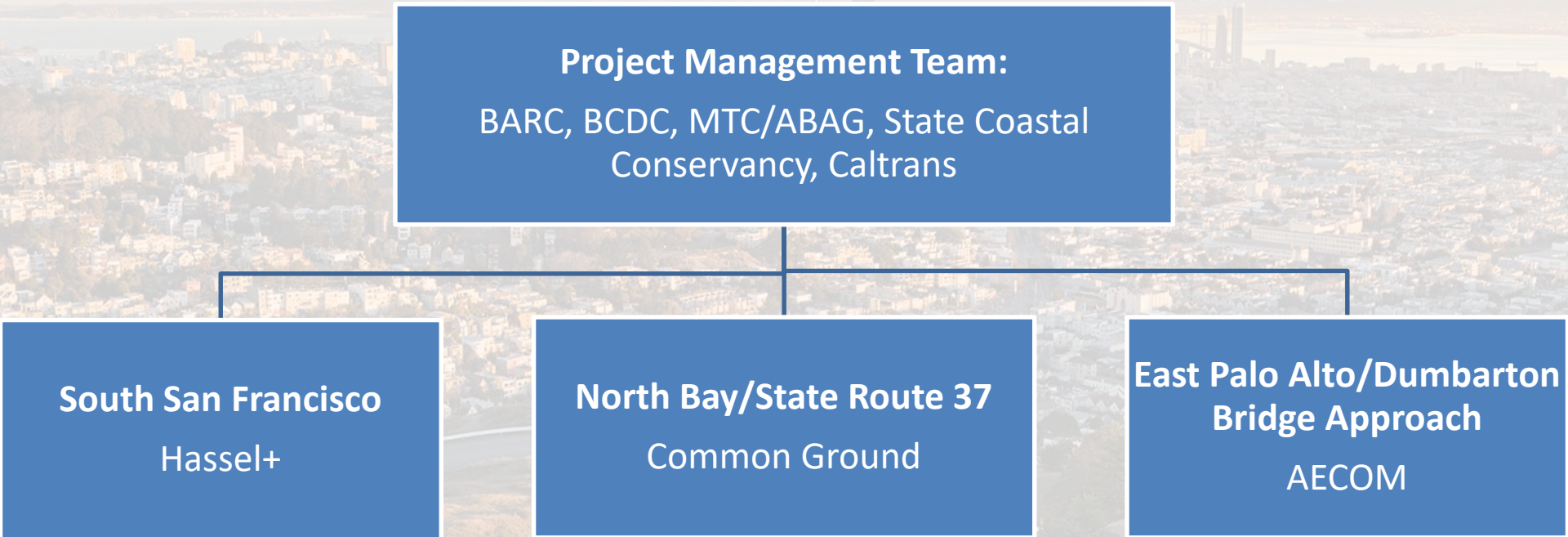
ART Bay Area Timeline



1. **Regional Working Group 6, Nov 27th**, Port of San Francisco: Presentation on draft regional indicators and framework
2. Developing cost estimates for adaptation strategies
3. Horizon coordination ongoing

Addressing Sea Level Rise in the Region

Caltrans SB 1 Adaptation Planning Grants

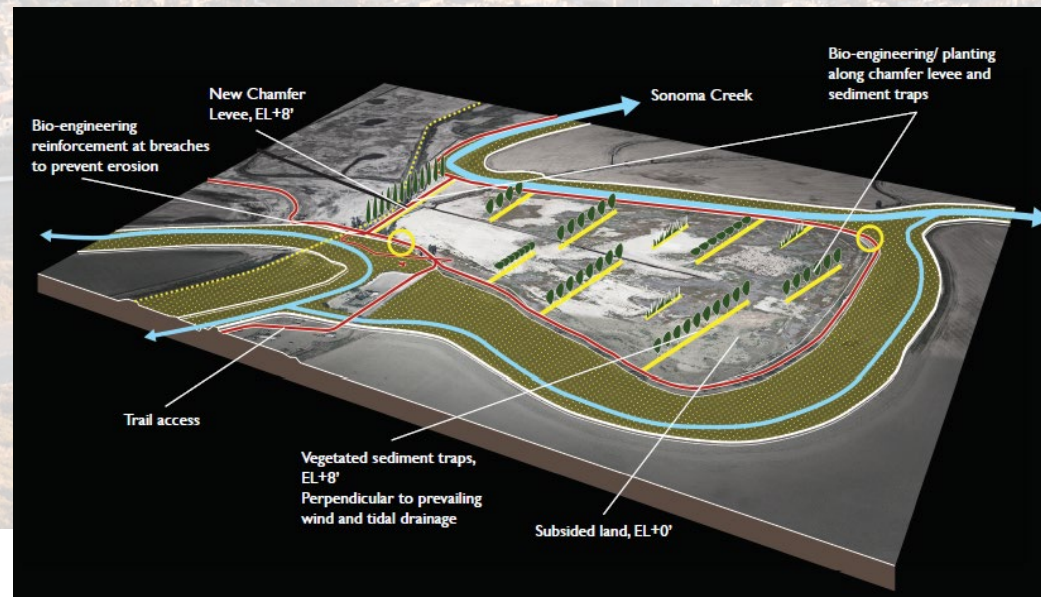


North Bay, SR-37 Public Access

Objective: Create equitable and resilient multimodal public access along SR37 corridor and in San Pablo Bay

Key activities include:

- Develop strategic adaptation interventions to expand public access to the Bay Trail
- Coordinate trail and access options with near and long-term SR 37 improvements



South San Francisco, Colma Creek

Objective: *To design for improved mobility and equitable access to the CalTrain and BayTrail while reducing risks to current and future flooding.*

Key activities include:

- Mitigate flooding associated with Colma Creek
- Develop 3 adaptation design proposals including hydraulic and transport modeling
- Expand Resilient South City' public engagement

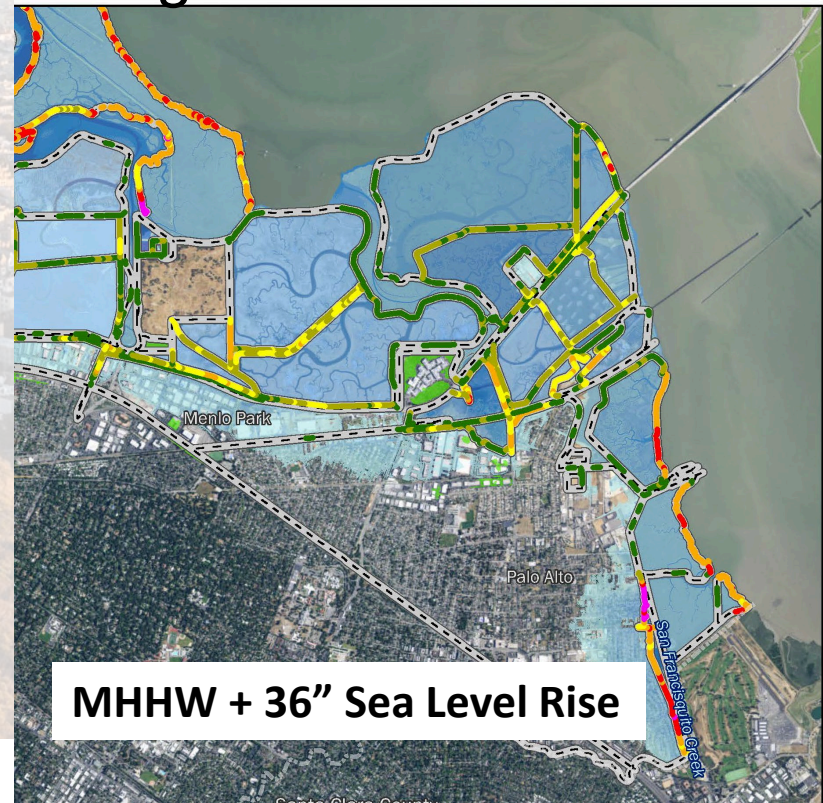


East Palo Alto/Dumbarton Bridge Resilience Study

Objective: *Identify adaptation strategies to protect the City of East Palo Alto and the Dumbarton Bridge western approach.*

Key activities include:

- Stakeholder engagement w/ East Palo Alto community and relevant asset managers
- Identification of near-term and long term adaptation strategies
- Implementation plan that identifies a path forward for selected adaptation strategies



Level Playing Field – Program Development

Goal: *Coordinated support for capacity building and measurably improved outcomes in Bay Area's priority communities*

Exploratory Analysis

- Priority Communities Mapping: Overlay of MTC/ABAG, BCDC, BAAQMD methods

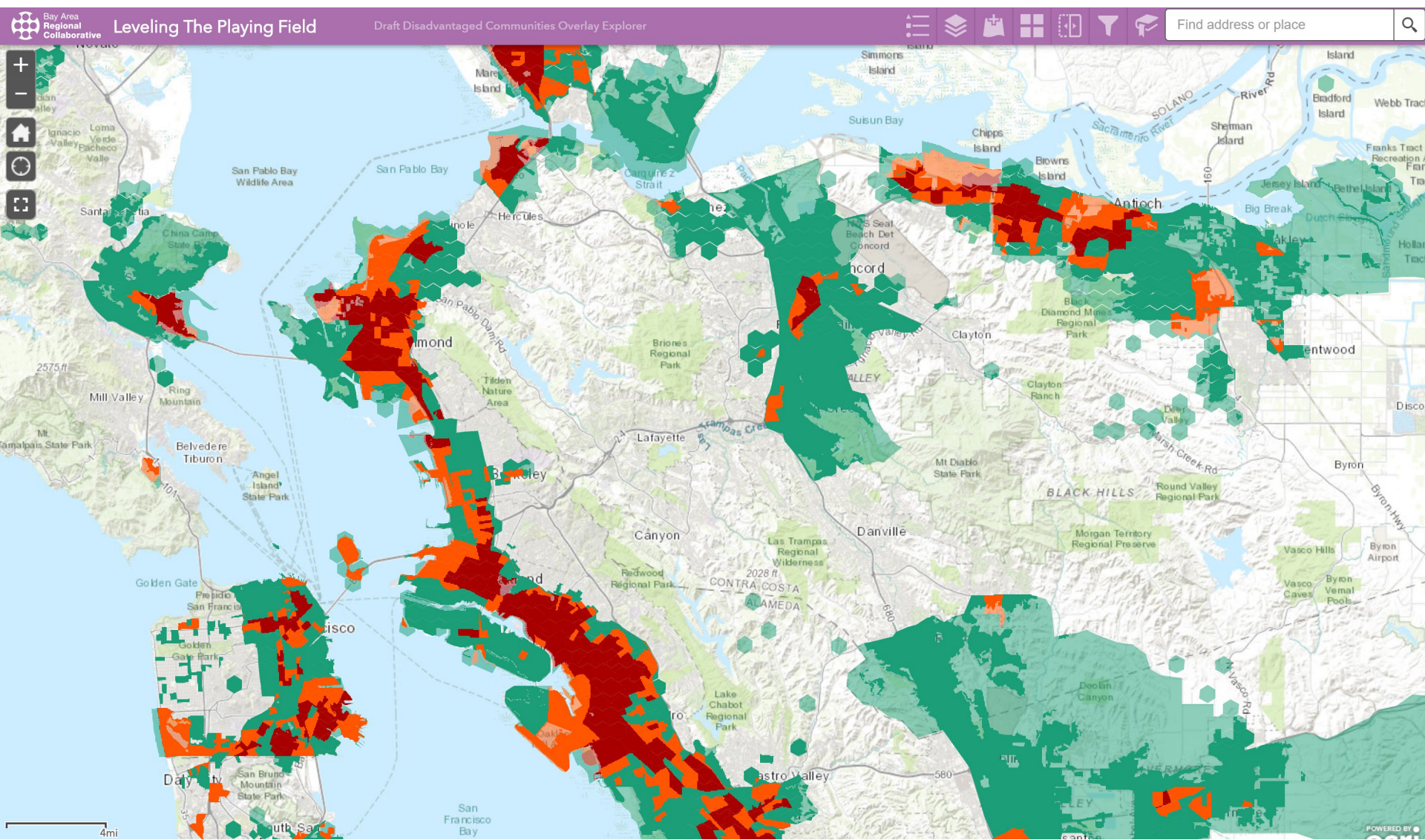
Needs Assessment

- Due-diligence assessment of programs and investments in each community across agencies
- Community needs assessments (AB 617, ART Bay Area)

Next Steps

- Strategic Partnerships Proposal
- Co-design process with local government and community leaders

Level Playing Field: Priority Communities



Carbon-Free Future

Project: *Working with consultant to assess how BAAQMD and regional agency partners can best support local governments in accelerating efforts to reduce greenhouse gas emissions (GHG) from existing buildings.*

Current Activity:

- Working with staff from local governments, community choice energy programs and state agencies to develop initial research approach



THANK YOU!

Allison Brooks

Abrooks@bayareametro.gov

(415) 778-5265