



# Assessment Findings: Resilient by Design Bay Area

November 16, 2018

Amy Hutzler, Deputy Executive Officer, State Coastal Conservancy  
Adrian Covert, Vice President, Public Policy, Bay Area Council

Item 8, Presentation

# Assessment

---

- **CBI** conducted an assessment of the RbD process and outcomes.
- **Purpose:** Assess impacts, lessons learned and potential next steps.
- **Methodology:** 28 interviews plus informal conversations.
- **Participants:** Agency, nonprofit, community, elected officials and design team representatives.

“We can design coastlines and resilient landscapes differently, and design can play a leadership role to formulate and develop strong narratives for projects needed to meet the challenges of the 21st century.” -Designer

# Impact of the Challenge

---

- Brought resilience to the forefront on a regional scale.
- Created opportunity to plan big, for long-term.
- Design can play an aspirational, creative role in a frightful conversation.

“Retreating doesn’t have to look like failure. The designs provided visualizations of something to achieve as opposed to something to avoid.”

# New, Integrated Ideas

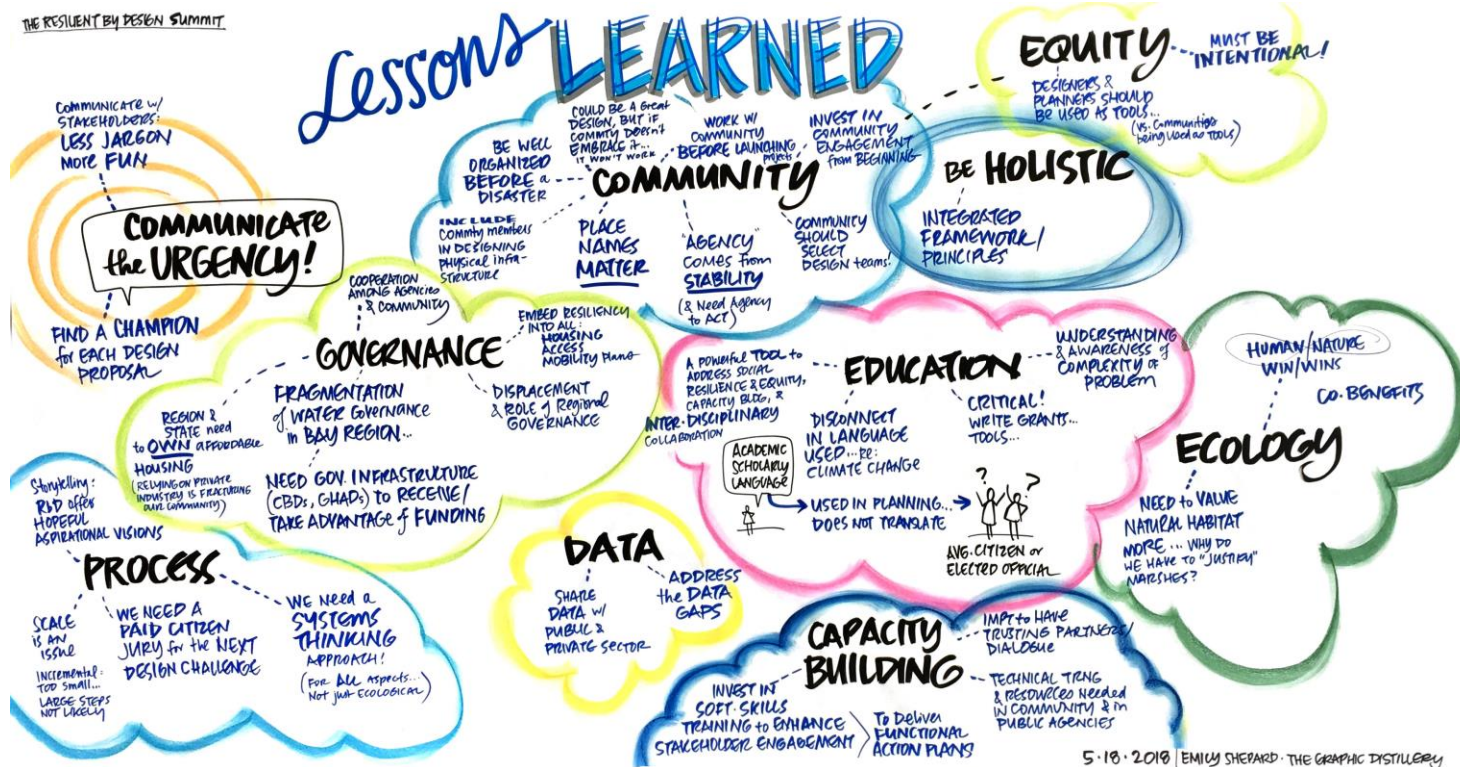
---

Resilience depends on **integrating social equity, ecosystems, and the built environment** to manage sea level rise, transportation, housing, the environment, and other vulnerabilities.

**International perspectives** and attention brought **new ideas** to the Bay Area.

“We have to solve for multiple things...we should fund projects that have multi-system and interdisciplinary approach.”

# Lessons Learned for Future Challenges



- Social equity is key, and relationship-building with communities must start day one.
- Structure & timeline did not support meaningful engagement.
- Academic partnership provides insights and builds capacity for future.
- Scope of some projects was too broad.
- Allow for regional strategies or team learning across sites.



# Opportunities for Advancing Design Elements

- Connect regional resiliency with local issues.
- Challenges / Hurdles
  - **Funding** will be the biggest challenge.
  - **Implementation** may take major multi-jurisdictional coordination and/or modification
  - All the designs lacked an **articulation of the first steps** for how to start down the path towards implementing the bigger vision.
  - **Residual distrust** remain from the Challenge for some stakeholders.



# Interviewees on Going Forward: Engagement

---

- Build on the Challenge's momentum.
- Acknowledge mistakes and **scale up** lessons learned for community relations to the region.
- Invest in both **broad and focused education efforts** to raise awareness and understanding
- **Timing** is important. Pace engagement with identifying priorities and advancing projects.
- Build enthusiasm and capacity for **young people**.
- Build organizational governance and **institutionalize political will** across scales (state, regional, local)
- Maintain **media presence**, web site, etc.

# Interviewees: What's Needed Going Forward

---

We're not finished. Need **champion(s)** to advance elements of the designs.

- Build on existing initiatives and relationships.
- Specific list of potential elements to advance.
- Short-, mid-, and long-term implementation.
- Maintain / update and make accessible **resiliency-related** information.

*"The majority of this work started by the Challenge will fade away without a **champion**. We are going to need technical support, fundraising, regional support, and advocacy if we are going to be successful implementing projects."*-  
Local Agency



# Moving our IDEAS FORWARD

DESIGN NATURE to work for US...

DON'T WORK AGAINST NATURAL PROCESSES

OPEN SPACE as GREEN INFRASTRUCTURE

ELEVATE ECOLOGY as GREEN INFRASTRUCTURE

RECOGNIZE the POWER of the CREEKS!  
REHAB THE CREEK CORRIDORS

## REGIONAL & BEYOND Level:

## GOVERNMENTAL Level

## COMMUNITY/ORGANIZATIONAL Level



5.18.2018 | EMILY SHEPARD - THE GRAPHIC DISTILLERY



# Interviewees on Going Forward: Funding + Structure

---

- Funding and Financing
- Dedicated Staff
- Structure Recommendations
  - Resilience Network / Hub
  - Potential Home at Existing Entity – no new entities!

*“RbD needs to create the table, keep the conversations going, and help provide funding to keep people at the table.”*



# Contact

---

## Gina Bartlett

CBI West Director and Senior Mediator

[gina@cbi.org](mailto:gina@cbi.org)

415.271.0049

## Tania Carlone

Senior Associate

[tcarlone@cbi.org](mailto:tcarlone@cbi.org)

510.684.0504