

EARTHQUAKE FIELD GUIDE & HOUSING QUIZ

Spotting Common Problems
in Bay Area Housing



Michael Germeraad
Association of Bay Area Governments
Metropolitan Transportation Commission
mgermeraad@bayareametro.gov



Dana Brechwald
Association of Bay Area Governments
Metropolitan Transportation Commission
dbrechwald@bayareametro.gov

resilience.abag.ca.gov | homequakequiz.org



EARTHQUAKE FIELD GUIDE & HOUSING QUIZ

Spotting Common Problems
in Bay Area Housing



Michael Germeraad

Association of Bay Area Governments
Metropolitan Transportation Commission
mgermeraad@bayareametro.gov



Dana Brechwald

Association of Bay Area Governments
Metropolitan Transportation Commission
dbrechwald@bayareametro.gov

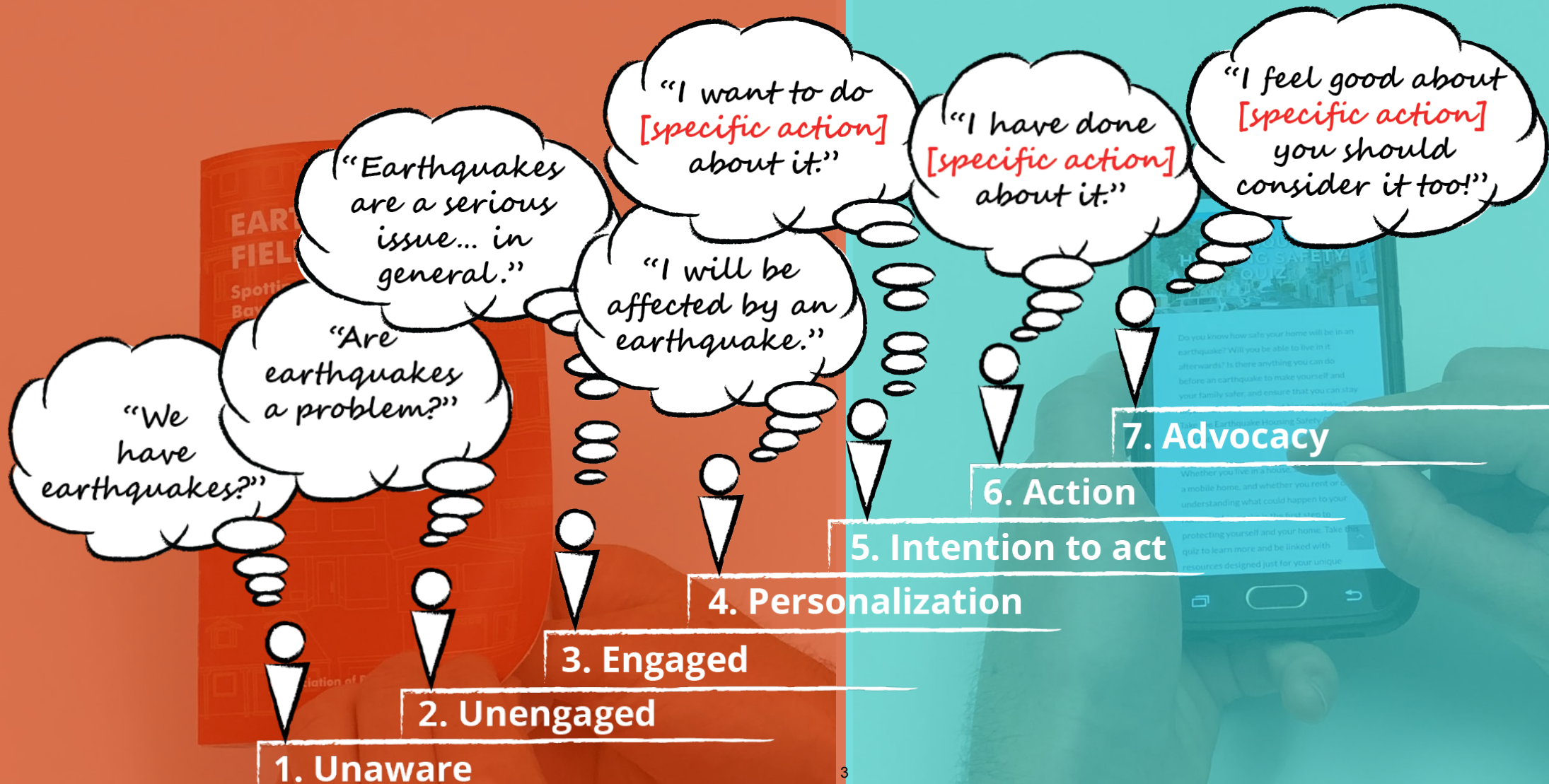
resilience.abag.ca.gov | homequakequiz.org



EARTHQUAKE FIELD GUIDE

EARTHQUAKE HOUSING SAFETY QUIZ

Agenda Item 8 Attachment 1



EARTHQUAKE FIELD GUIDE

Housing Type



Identifying Features

The visual clues to help you ID homes from the street.



Commonly Found With

Some homes fit more than one type, we highlight common hybrids.

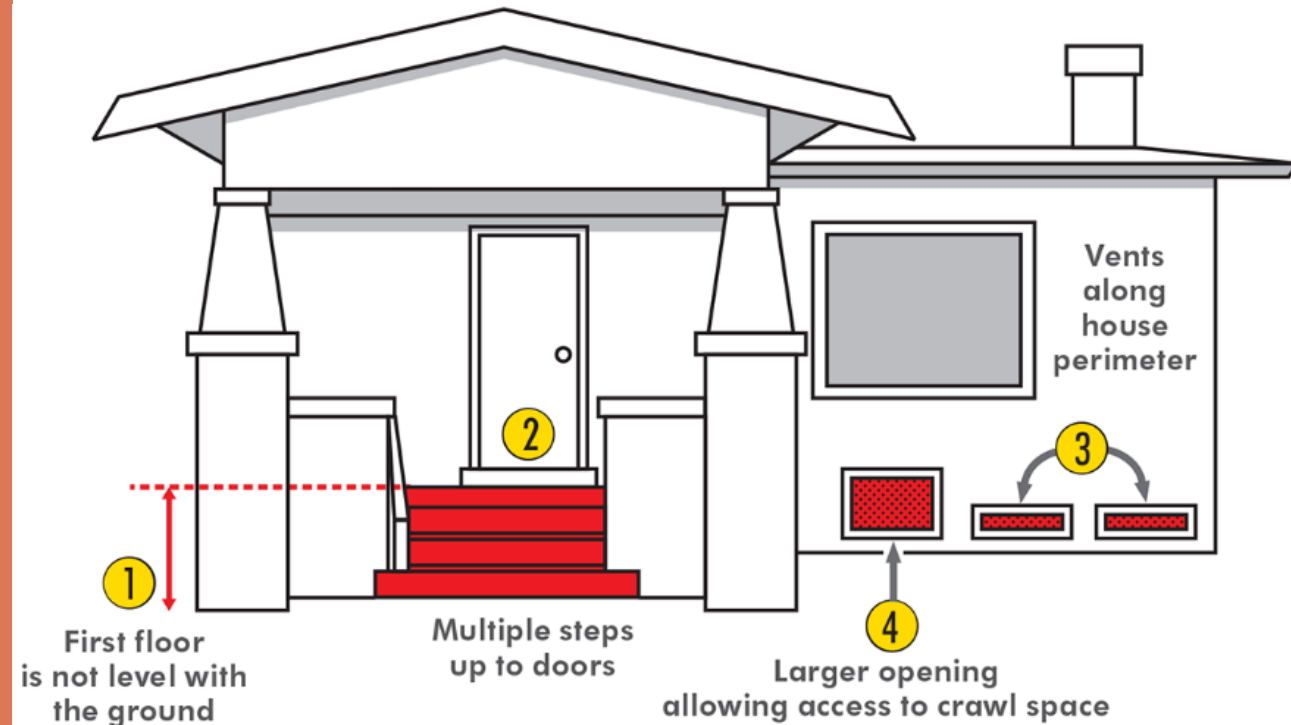


Common Problem in an Earthquake
A description of common damage patterns for the building type.



Next Steps

Spoiler Alert! It's always to take the quiz.



EARTHQUAKE HOUSING SAFETY QUIZ

Three Unique Quizzes

- Single Family Homes
- Multi-Family Homes
- Mobile or Manufactured Homes

Three Sections in Each

- Geologic Hazards
- Structural
- Non-Structural

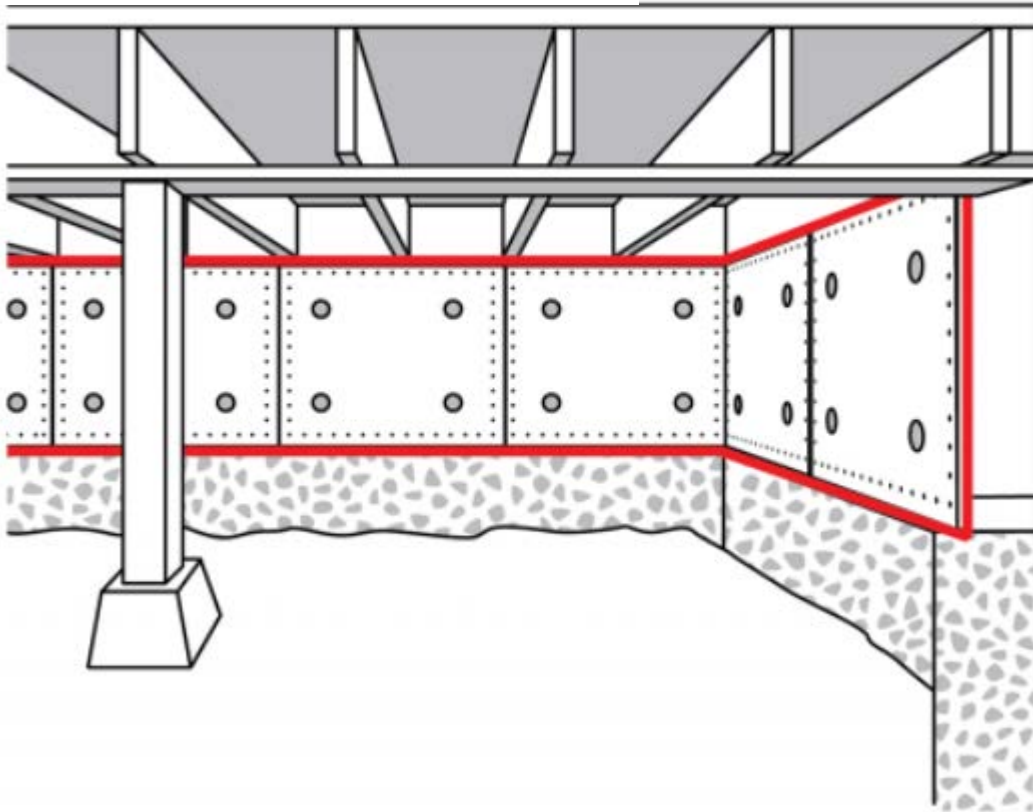
Adaptive Questions

The user is only asked relevant questions.

Resources to Help Answer Questions

Resource Page to explain complex concepts

Wood studs with a qualifying retrofit



If the portions of the wall at the perimeter are covered with plywood or oriented strand board (OSB) and you cannot see wood studs, this is a sign that your cripple wall may have been retrofitted. If you have participated in a program such as the California Earthquake Authority's Earthquake Brace and Bolt Program or using Standard Plan Set A, choose "Wood studs with a qualifying retrofit." If you have a retrofit that was not part of a program, please consult a contractor to evaluate your retrofit.

EARTHQUAKE HOUSING SAFETY QUIZ

Agenda Item 8 Attachment 1

PRONE TO CRAWL SPACE COLLAPSE

How safe is my home in an earthquake?	How livable is my home after an earthquake?	How much does retrofit typically cost?	Is this a high priority retrofit?
TODAY Medium safety	TODAY Low livability	\$1,000 to \$10,000	Yes
AFTER RETROFIT High safety	AFTER RETROFIT High livability		

What does this mean and what do I do next?

If the crawl space framing is not bolted to the foundation, the home can slide off the foundation. If the crawl space is not properly braced with plywood, all or a portion of the crawl space can experience significant lean or collapse.

Strengthen crawl space walls. If the cripple wall is under 7 feet, you may be able to do this yourself or with a contractor. For taller cripple walls, consult a civil or structural engineer or architect.

> [MORE INFORMATION.](#)

Outcomes Page

Organized by the three sections of the Quiz

- Geologic
- Structural
- Non-Structural

Four Dimensions to help make decisions

- Safety
- Liveability
- Retrofit Cost
- Priority

Resources

When available, links to guidance, standard plan sets, or funding are shared.

HOW YOU CAN HELP

Use it yourself!

Amplify homequakequiz.org

- On your website – change old links!
- As part of your local programs and outreach
- Share with your partners and neighboring communities

Request additional copies of the printed Field Guide

- We're making 10 copies available to local jurisdictions
- We're making 3 copies available to other organizations

Adapt elements for your needs

- All the elements can be adapted for local programs and outreach materials

The Field Guide & Housing Quiz were supported by two USGS grants.



Visit
homequakequiz.org