

HANDOUT - BATA AGENDA ITEM 4a

From: Roland Lebrun

Sent: Tuesday, July 24, 2018 5:42 AM

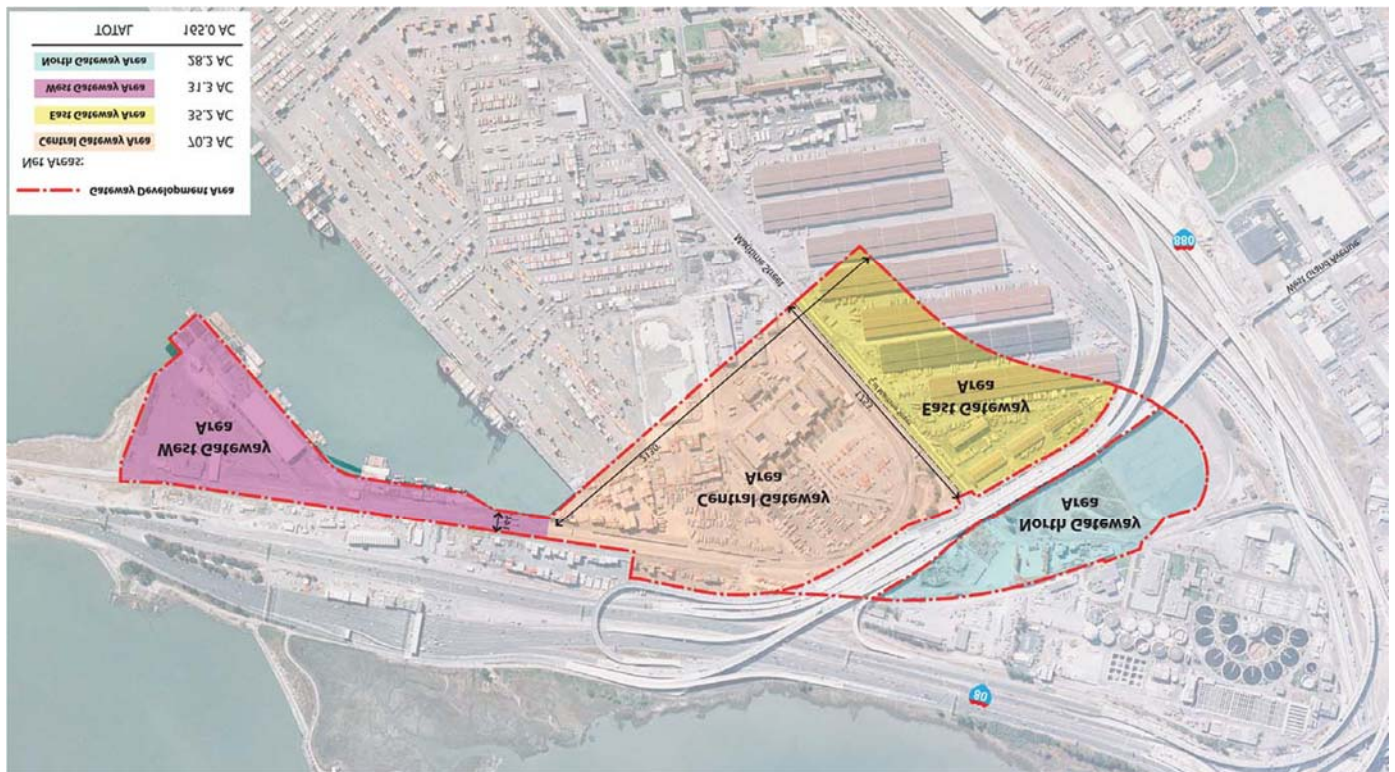
To: [Jake](#) Mackenzie

Cc: MTC Info <info@bayareametro.gov>; CHSRA Board; Caltrain Board; Nila Gonzales; SFCTA CAC; Caltrain CAC Secretary; CAC@TJPA.org; Steve Stamos, Clerk of the Board <clerk@sfcta.org>

Subject: Item 4.a BATA Resolution No. 125: Adoption of Final EIR for Gateway Park

Dear Chair Mackenzie and Members of the Bay Area Toll Authority Board of Directors,

The intent of the attached letter is to voice strong support for BATA Resolution No. 125: Adoption of Final EIR for Gateway Park and to elaborate on comments I made during the July 13th Planning Committee requesting that MTC consider taking actions to protect a future Transbay tunnel alignment from potentially conflicting developments.



cc:

Metropolitan Transportation Commission

SFCTA Board of Directors

High Speed Rail Authority Board of Directors

TJPA Board of Directors

Caltrain Board of Directors

SFCTA CAC

Caltrain CAC

TJPA CAC

HANDOUT - BATA AGENDA ITEM 4a

July 23 2018

Bay Area Toll Authority

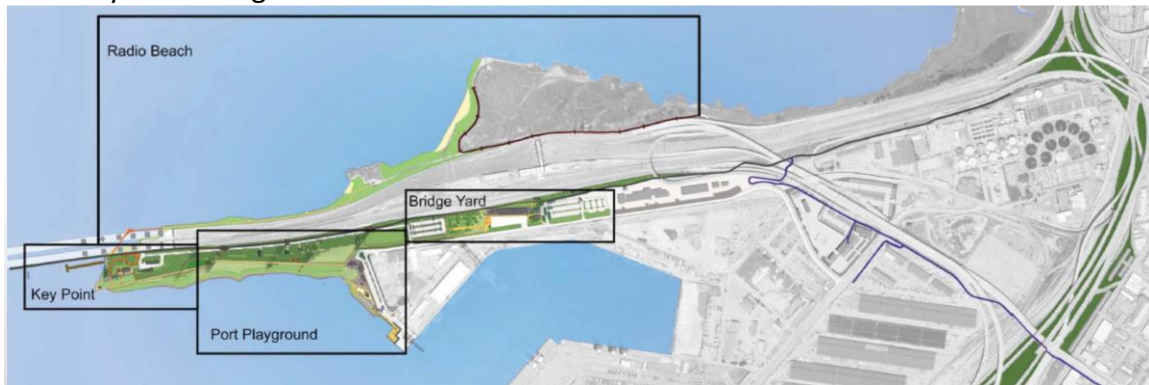
July 25 Board Meeting

Item 4.A BATA Resolution No. 125: Final EIR for Gateway Park

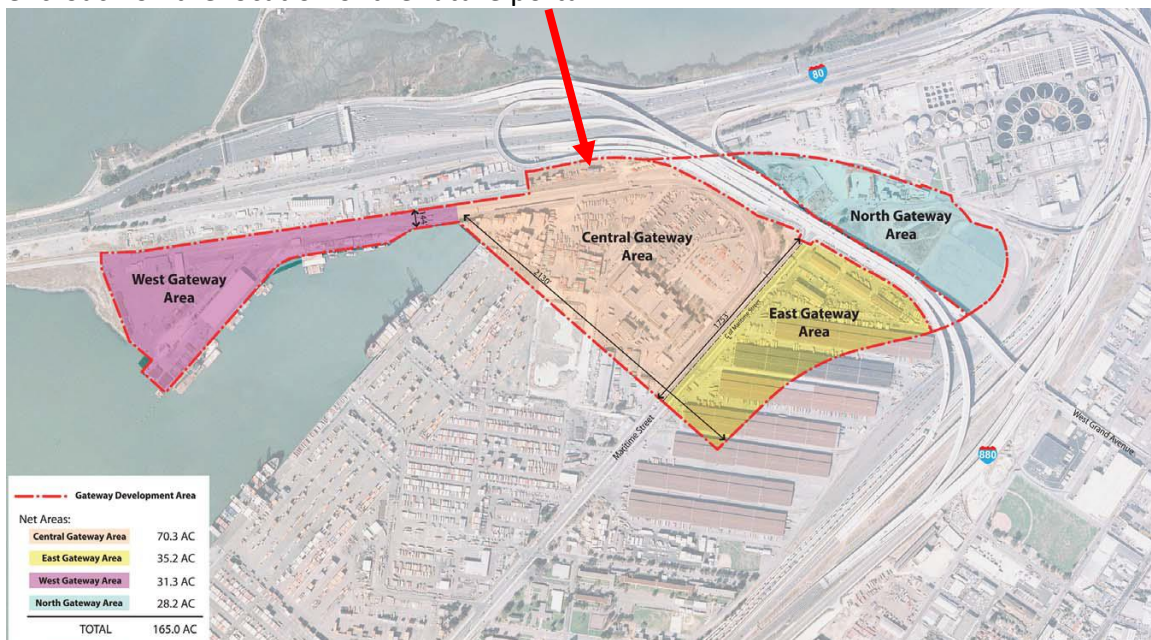
Dear Chair Mackenzie and Members of the Bay Area Toll Authority Board of Directors,

The intent of this letter is to voice strong support for BATA Resolution No. 125: Adoption of Final EIR for Gateway Park and to elaborate on the comments I made during the July 13th Planning Committee requesting that MTC consider taking actions to protect a future Transbay tunnel alignment from any conflicting development.

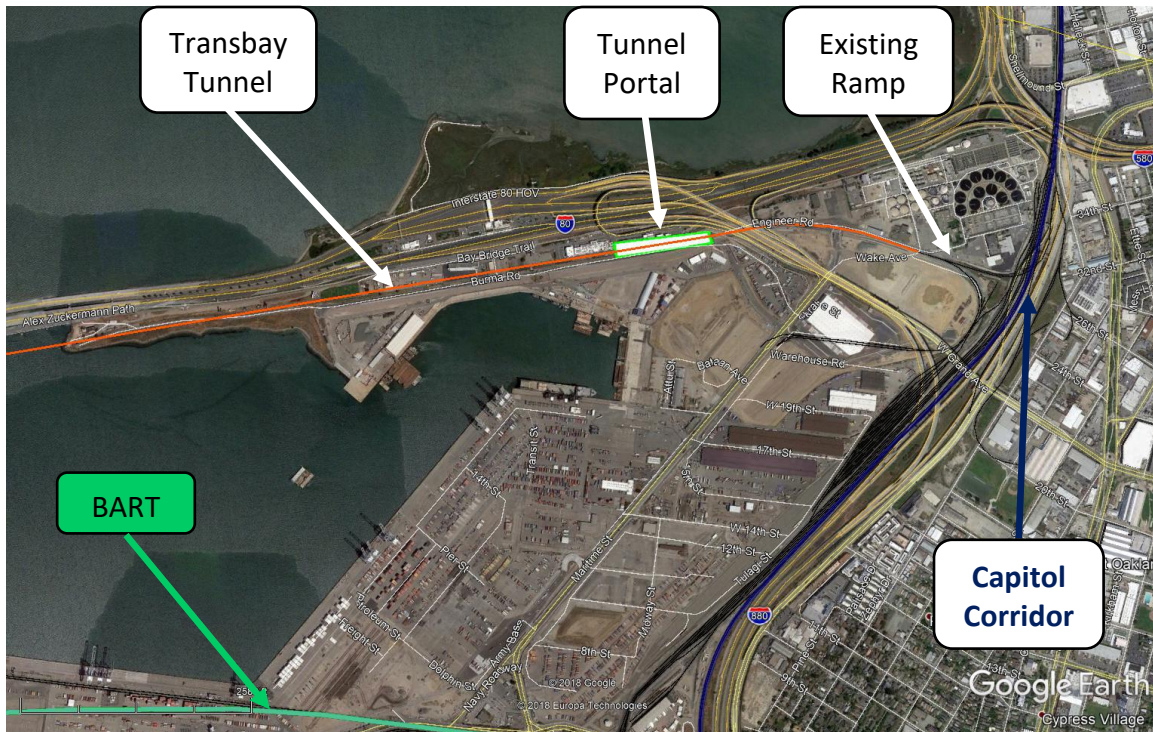
As can be seen below, the Key Point, Port Playground and Bridge Yard protect the future Transbay tunnel alignment.



The issue is with the Army Base redevelopment's Central & North Gateway Areas which encroach on the location of the future portal.



HANDOUT - BATA AGENDA ITEM 4a



Please consider protecting this right of way by extending Gateway Park all the way to the existing Union Pacific connecting ramp to Emeryville and Sacramento.



Thank You.

Roland Lebrun