



# **GATEWAY PARK**

Final Environmental Impact Report

# GATEWAY PARK WORKING GROUP

## Gateway Park Area Letter of Intent

February 4, 2009

The development of the Gateway Park Area, located at the eastern touchdown of the San Francisco-Oakland Bay Bridge in Oakland, California, presents a unique opportunity to provide a significant new public place for the residents of the San Francisco Bay Area. In July 2008, an initial Visioning Conference, which included policy and management representatives of the major stakeholders of the project, was held to create the vision for the Gateway Park Area. At the conference the participants agreed that the Gateway Park Area should be transformed into a world-class waterfront public space, and further agreed that to realize this vision it would take an ongoing collaborative effort among many agencies and stakeholders.

At a follow-up Visioning Conference held on February 4, 2009, the project stakeholders approved a plan to initiate a Project Study Report (PSR) for the Gateway Park Area. The PSR will examine alternatives in regards to land uses, activities, environmental impacts, and public access to define the scope, schedule, cost estimates and funding plan for the delivery of a Gateway Park Area project. The PSR will include community and stakeholder input to develop a project that is compatible with the goals of the interested parties and to achieve consensus among regional and local jurisdictions.

To successfully complete the PSR and to design and develop a successful project, it will continue to take a comprehensive and collaborative process among many parties. Therefore, it is agreed that the Gateway Park Working Group, which includes dedicated staff resources from the undersigned agencies, is formally established to continue the collaborative planning efforts to oversee completion of the PSR and advance the design and delivery of a Gateway Park Area project.

  
California Department of Transportation

  
City of Oakland

  
California Transportation Commission

  
East Bay Regional Park District

  
Bay Area Toll Authority

  
Bay Conservation & Development Commission

  
Port of Oakland

  
Association of Bay Area Governments

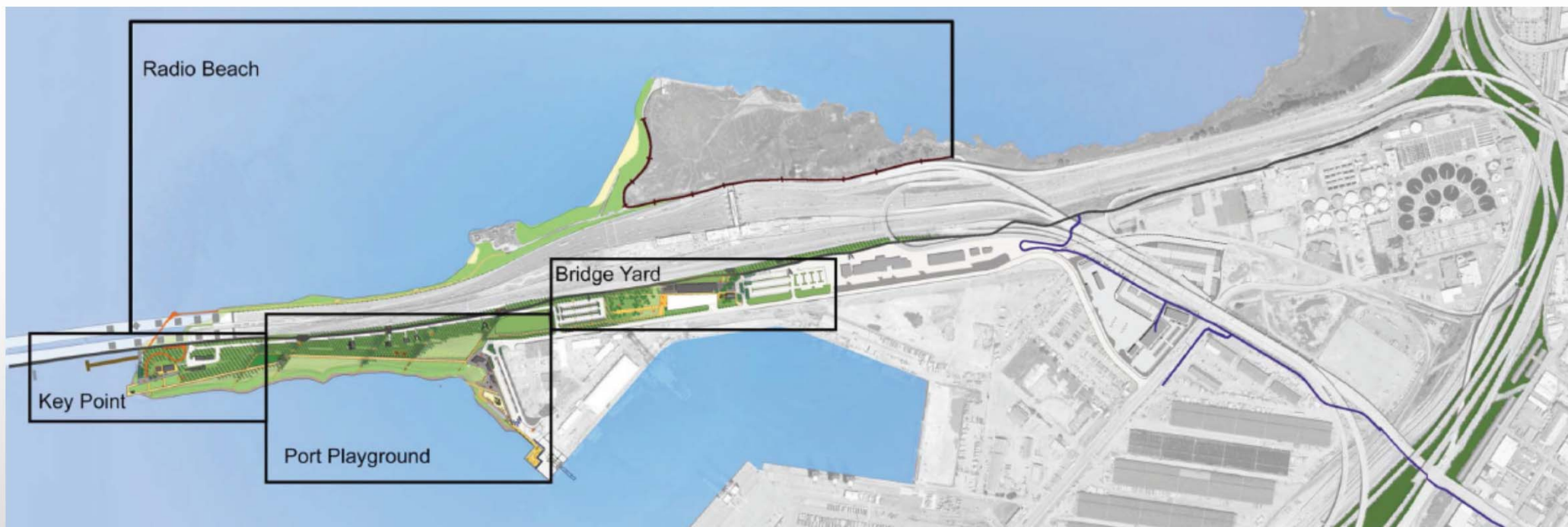


\*EBRPD is a participating member of the Gateway Park Working Group, not a signatory on this letter

# FEIR GATEWAY PARK PROJECT

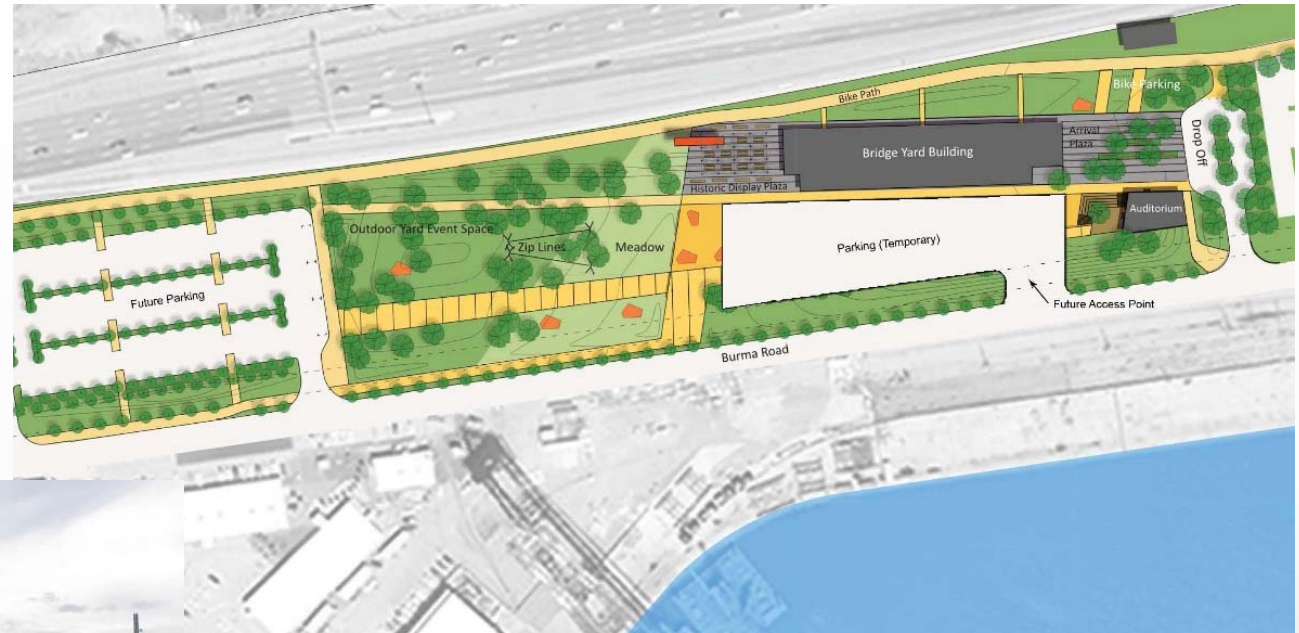


# VISION PLAN FOR PARK SEGMENTS





# BRIDGE YARD



Simulated Conditions.

# PORT PLAYGROUND



# KEY POINT



Source: TYLIN, 2017.

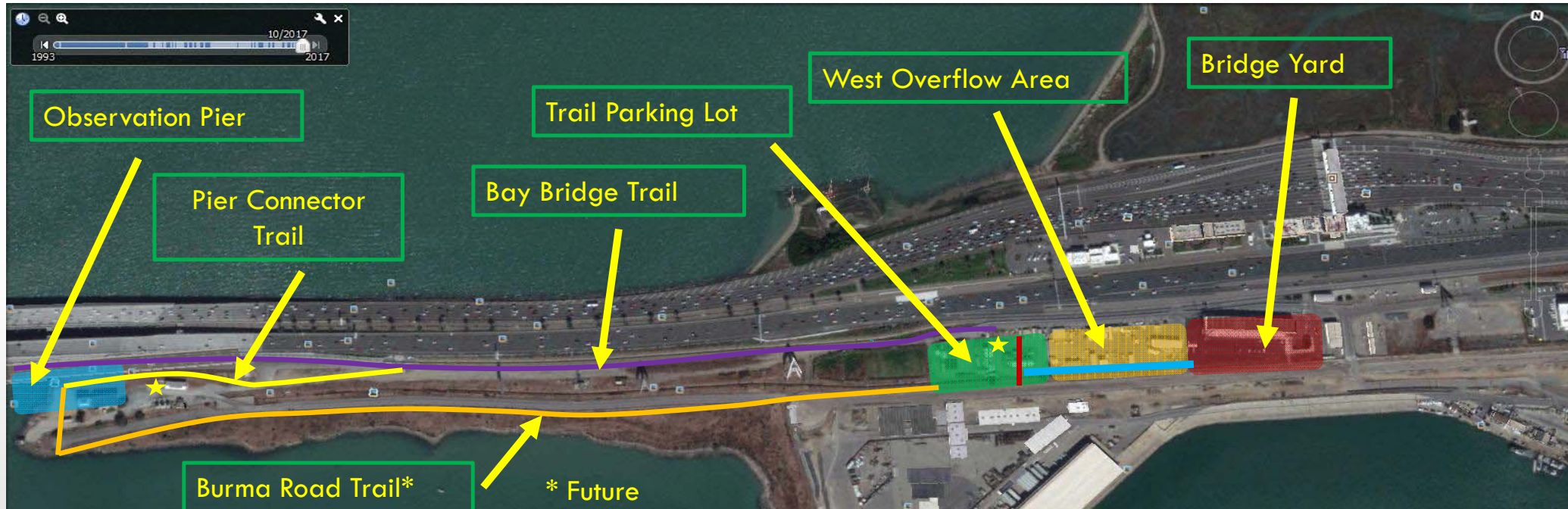


# RADIO BEACH





# GATEWAY REGIONAL PARK



★ = Restroom

Interim Park Development activities – Update  
Jim O'Connor, Assistant General Manager, EBRPD

