



H O R I Z O N



Overview & Progress to Date

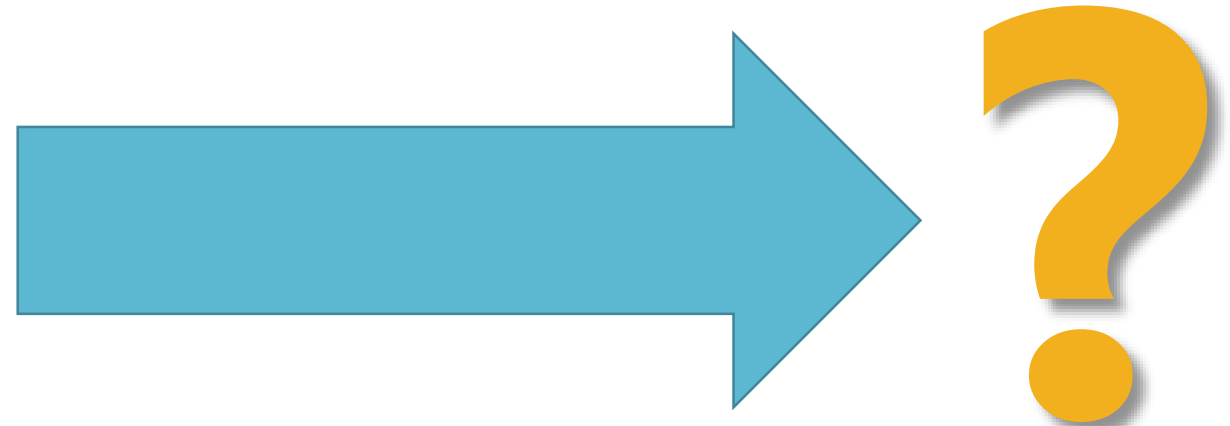
Horizon & Plan Bay Area 2050

Dave Vautin, Principal Planner - MTC/ABAG

BARC Board - June 15, 2018



We live in a time of incredible uncertainty. **And our regional plans need to acknowledge this reality.**



Our region's history inspired our thought process on how to prepare for ever-changing circumstances.



1906 – Earthquake on San Andreas Fault

Our resilience to external forces – environmental, political, economic, technological – has been our greatest strength.

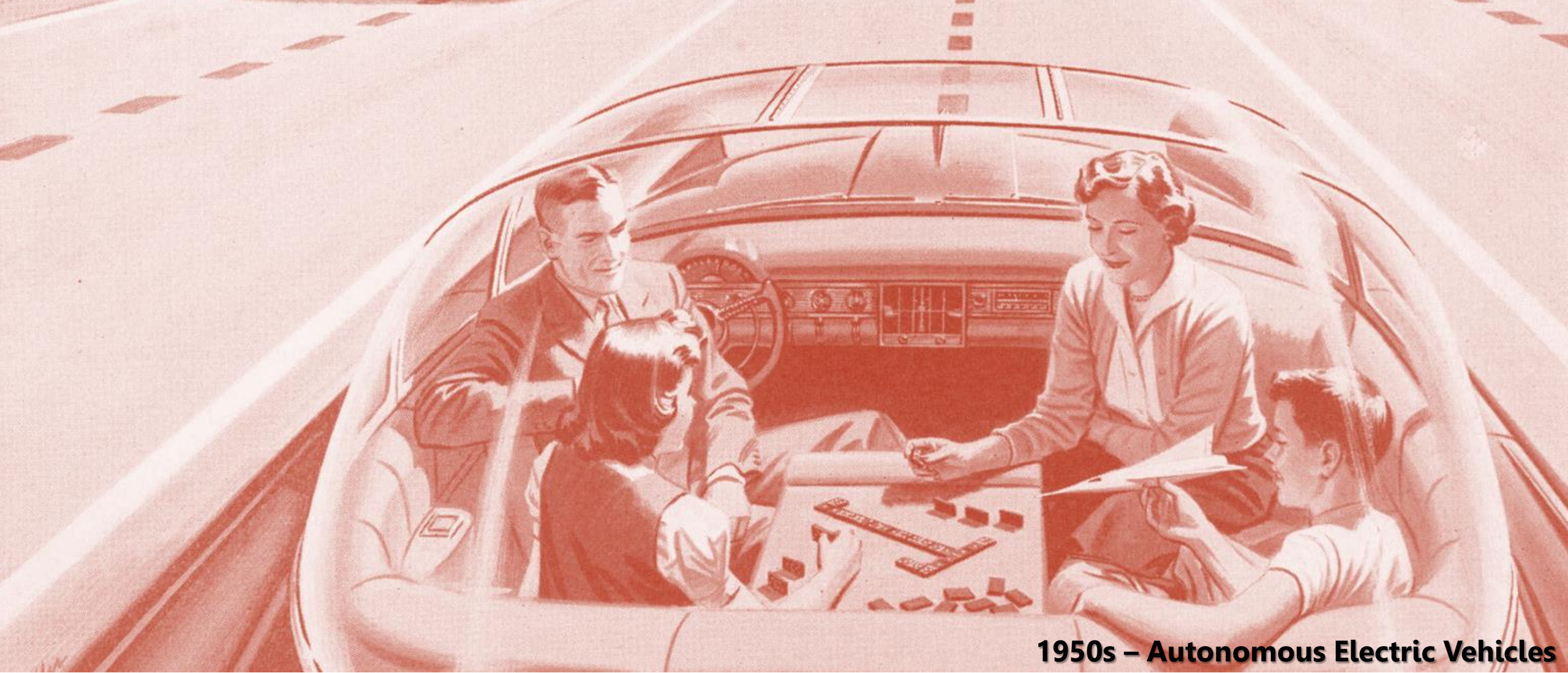
NOT TO BE RELEASED
FOR PUBLICATION
NAVY YARD MARE ISLAND, CALIF

RESTRICTED



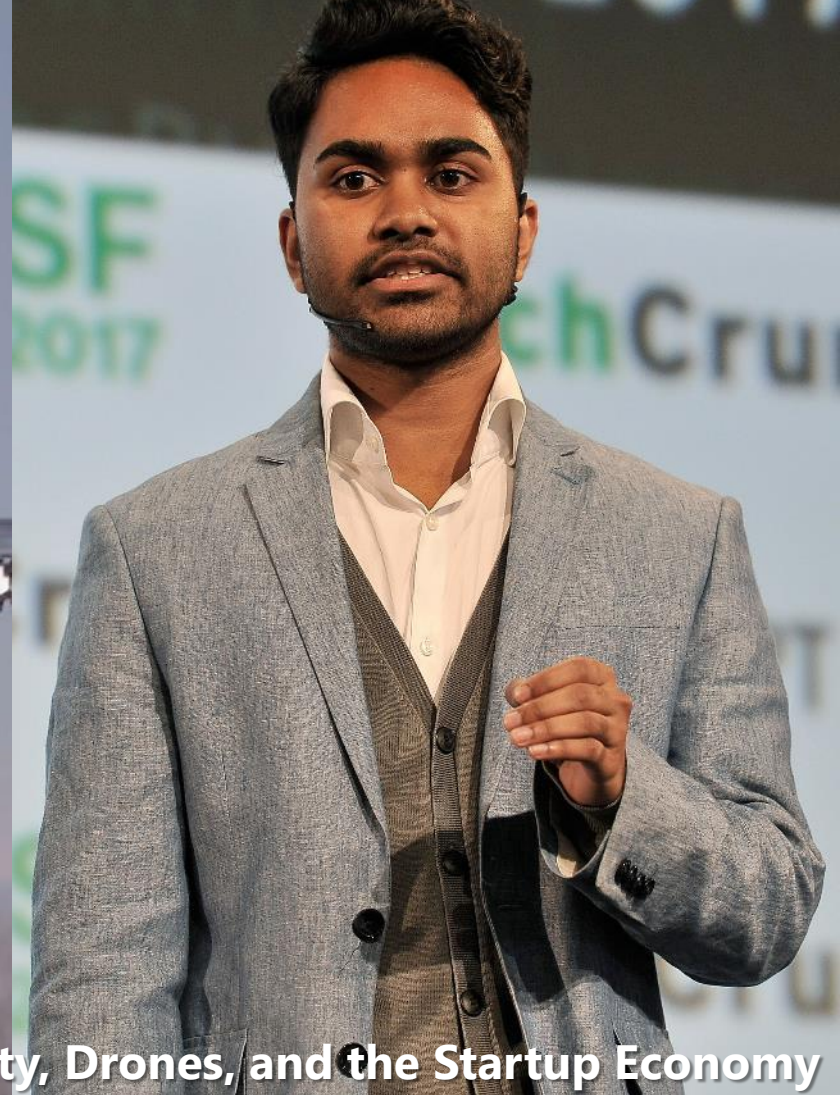
1940s – Mare Island, Vallejo

Unanticipated events – such as wars and earthquakes – shaped our region.



1950s – Autonomous Electric Vehicles

We've long dreamed about innovations that could change our lifestyles and our communities...



2010s – Virtual Reality, Drones, and the Startup Economy

... but with the accelerating pace of innovation, shifts may occur sooner than expected.



Immigration Crackdowns, Displacement, and Vulnerability to Disasters

**The challenges we face are not merely technological
– they are political, economic, and environmental.**



1960s/1970s – Creation of Regional Agencies

Yet we have a history of taking action to address regional crises – will we rise to the challenges of the 21st century?

The background is a scenic landscape photograph. In the foreground, there are rolling hills covered in tall, golden-brown grass. A few green trees are scattered across the middle ground. In the distance, a body of water is visible, surrounded by more hills. The sky is a mix of orange and blue, suggesting a sunset or sunrise. The sun is a bright yellow circle on the horizon, with rays of light extending outwards.

The **Horizon** initiative seeks to explore a suite of challenging questions that transcend the traditional framework used for past **Plan Bay Area** efforts.



**What might
autonomous vehicle
adoption mean for our
pipeline of
transportation
investments?**



What strategies should we consider to prepare for increasingly-frequent disasters?




What changes need to be made to land use and transportation policies to tackle rising sea levels?

A white rectangular sign with the word "FORECLOSURE" in large, bold, red capital letters. The sign is mounted on a white post. In the background, there is a house with a brown tiled roof and some trees.

FORECLOSURE

How should the region respond if economic output, population, and employment suddenly boom or bust?

sale

A photograph of a modern automotive assembly line. White robotic arms with red joints are positioned over a car body. The background shows more of the factory floor with other vehicles and equipment.

**What role should
government play to
ensure that everyone
benefits in tomorrow's
economy?**

A satellite image of Earth showing a large, swirling storm system over the ocean, with landmasses visible in the upper right and lower left.

**What actions can we
take to improve our
resilience to
geopolitical and
economic shifts?**



**Spring 2015 to
July 2017**



**February 2018
to June 2019**



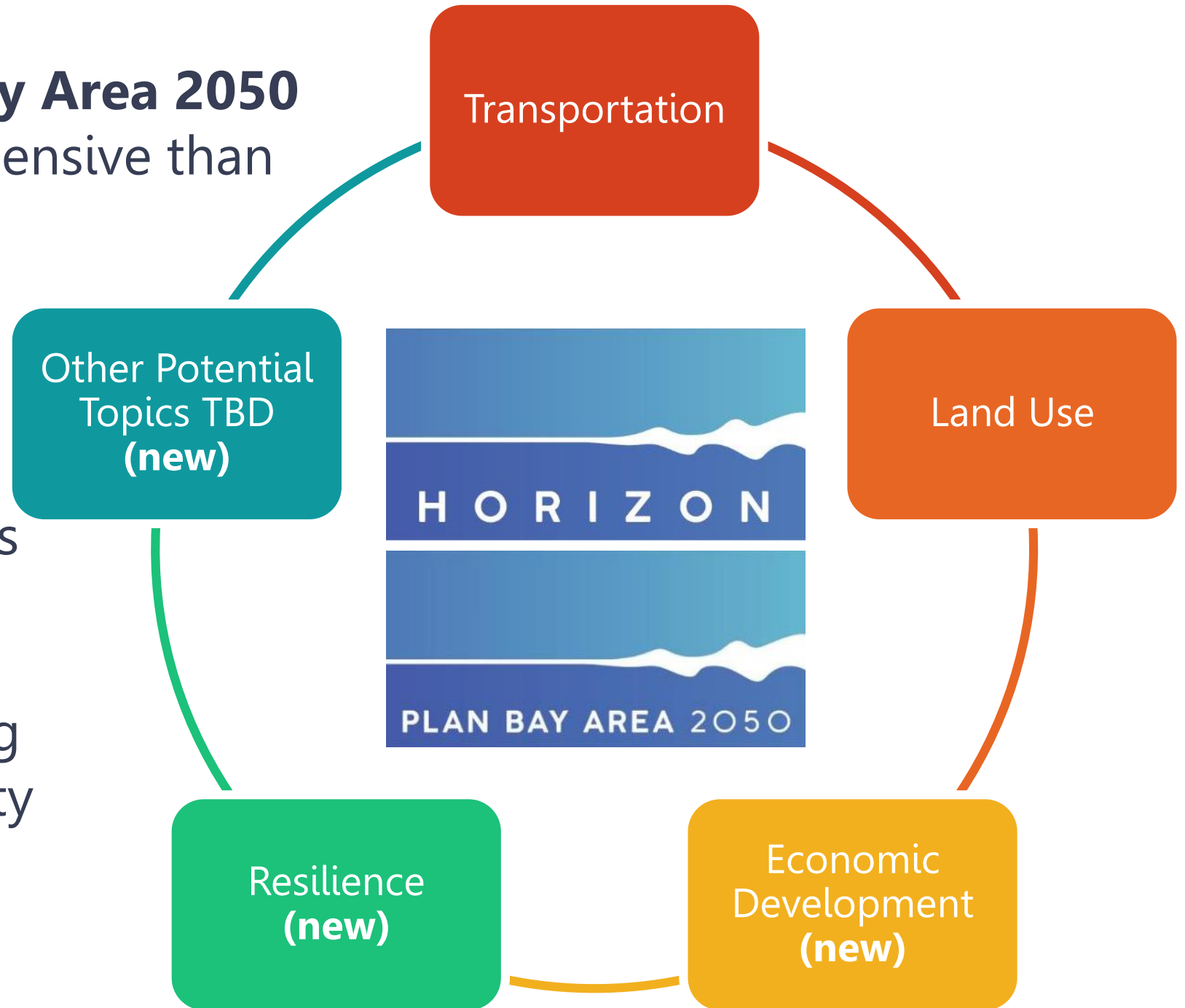
**July 2019 to
June 2021**

High-performing strategies and projects from *Horizon* – those that are resilient to uncertainties – **will be recommended for inclusion in the Preferred** Plan Bay Area 2050 (RTP/SCS).

Horizon and Plan Bay Area 2050

will be more comprehensive than past RTP/SCS cycles.

Horizon's Guiding Principles and **Plan Bay Area 2050's** goals & targets will guide decision-making and integrate cross-cutting issues, including equity and sustainability.

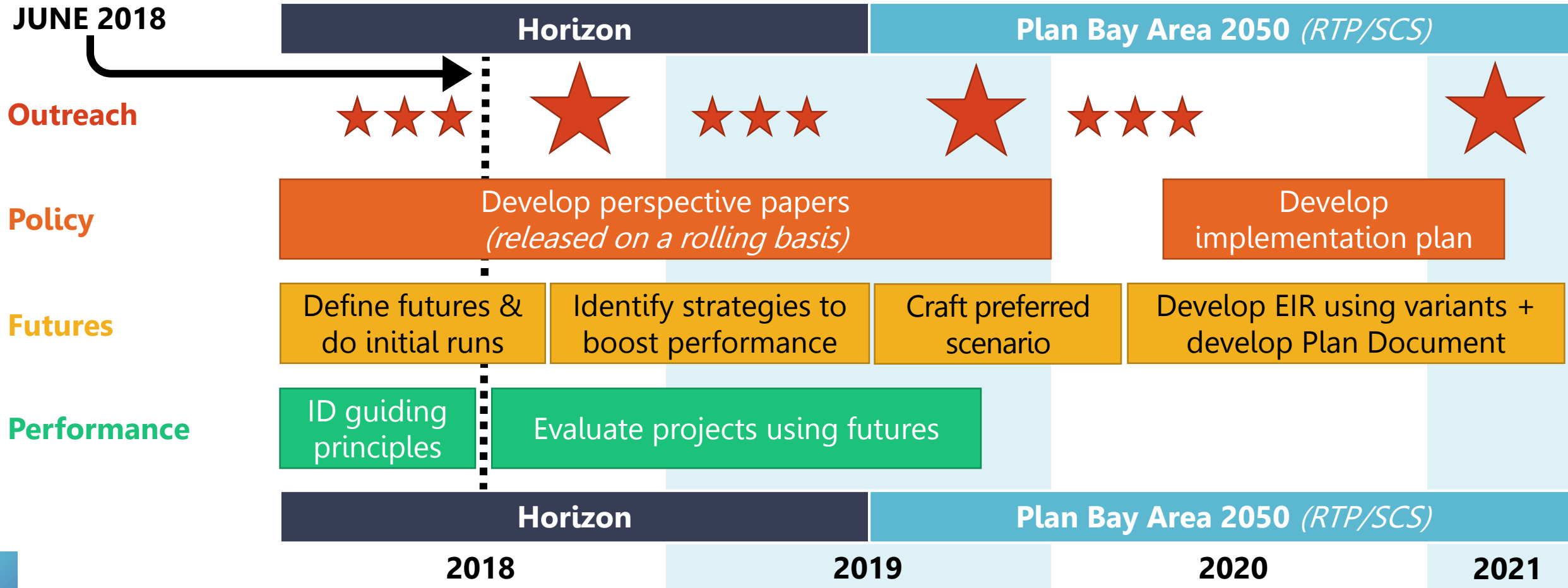


The background of the slide is a collage of images. The top half features an aerial view of a high-speed train with a white, blue, and red livery crossing a concrete bridge over a dry riverbed. The surrounding landscape is arid with yellowish-brown grass and some green shrubs. The bottom half of the slide is a solid blue rectangle containing the text. The bottom edge of the slide shows a close-up of the train tracks and gravel bed.

Progress to Date

Horizon Update: June 2018

Horizon + Plan Bay Area 2050 Overview



Public & Stakeholder Outreach

- **Round 1 Public Outreach**
 - Pop-Ups
 - Online Surveys
 - Request for Transformative Projects
- **Ongoing Stakeholder Outreach**
 - Regional Advisory Working Group
 - Online Surveys
 - Webinars



Round 1 Outreach

YES Conference	Feb. 24
NVTA Transit Center (Napa)	Feb. 28
Santa Rosa Junior College	Feb. 28
Pickleweed Library (Marin)	March 3
Newark Farmer's Market	March 4
Clement St. Farmer's Market (SF)	March 4
Berryessa Flea Market (San Jose)	March 4
Vallejo Art Walk	March 9
Stoneridge Mall (Pleasanton)	March 10
Campbell Farmers Market	March 11
Sunday Streets Mission District (SF)	March 11
Diridon Caltrain Station (San Jose)	March 13
Broadway Plaza Mall (Walnut Crk)	March 17
Strong Girls Conference (Sta Rosa)	March 17
Marin Farmer's Market	March 18
Sebastopol Farmer's Market	March 18
Castro Valley Middle School	March 19
SF Ferry Building	March 22
Berkeley Farmers Market	March 22
Lake Merritt	March 24
East Palo Alto Farmers Market	March 24
Sunday Streets Excelsior District (SF)	March 25
Mountain View Farmers Market	March 25
Redwood City Library	March 26
Richmond Library	March 26
Oxbow Market (Napa)	March 27
Jelly Belly Factory (Fairfield)	March 27
Daly City Farmers Market	March 29

10,000+
comments
when combined with
Horizon online survey

**Of the 28 events, 17 were
located in or serving
communities of concern**

*The San Francisco Bay Area
aspires to be:*



AFFORDABLE

All Bay Area residents and workers have sufficient housing options they can afford – households are economically secure.



CONNECTED

An expanded, well-functioning transportation system connects the Bay Area – fast, frequent and efficient intercity trips are complemented by a suite of local transportation options, connecting communities and creating a cohesive region.



DIVERSE

The Bay Area is an inclusive region where people from all backgrounds, abilities, and ages can remain in place – with access to the region's assets and resources.



HEALTHY

The region's natural resources, open space, clean water and clean air are conserved – the region actively reduces its environmental footprint and protects residents from environmental impacts.



VIBRANT

The Bay Area region is an innovation leader, creating quality job opportunities for all and ample fiscal resources for communities.

Final Guiding Principles

Creating **Futures** to Explore

3-Minute Video –
Summary of April 23rd
Horizon Peer Exchange

<https://youtu.be/1rDmygU5yn0>



Perspective Papers



1) Autonomous Vehicles



2) Climate Mitigation



3) Growth Strategies



4) Crossings



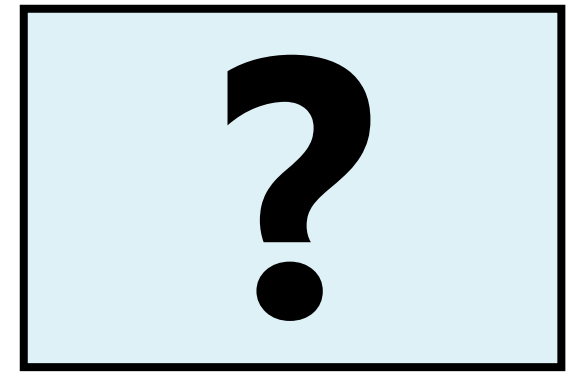
5) Future of Jobs



6) Governance



7) Better Buildings



More to Come?

Project Performance – Benefit-Cost Analysis

Benefits – for travelers & society



Travel Time



Noise



Travel Costs



Health



Safety



*Other
Potential
Benefits?*



Emissions

*Incorporates benefits for
all modes: autos, trucks,
transit, walking, biking*

Costs – for public sector



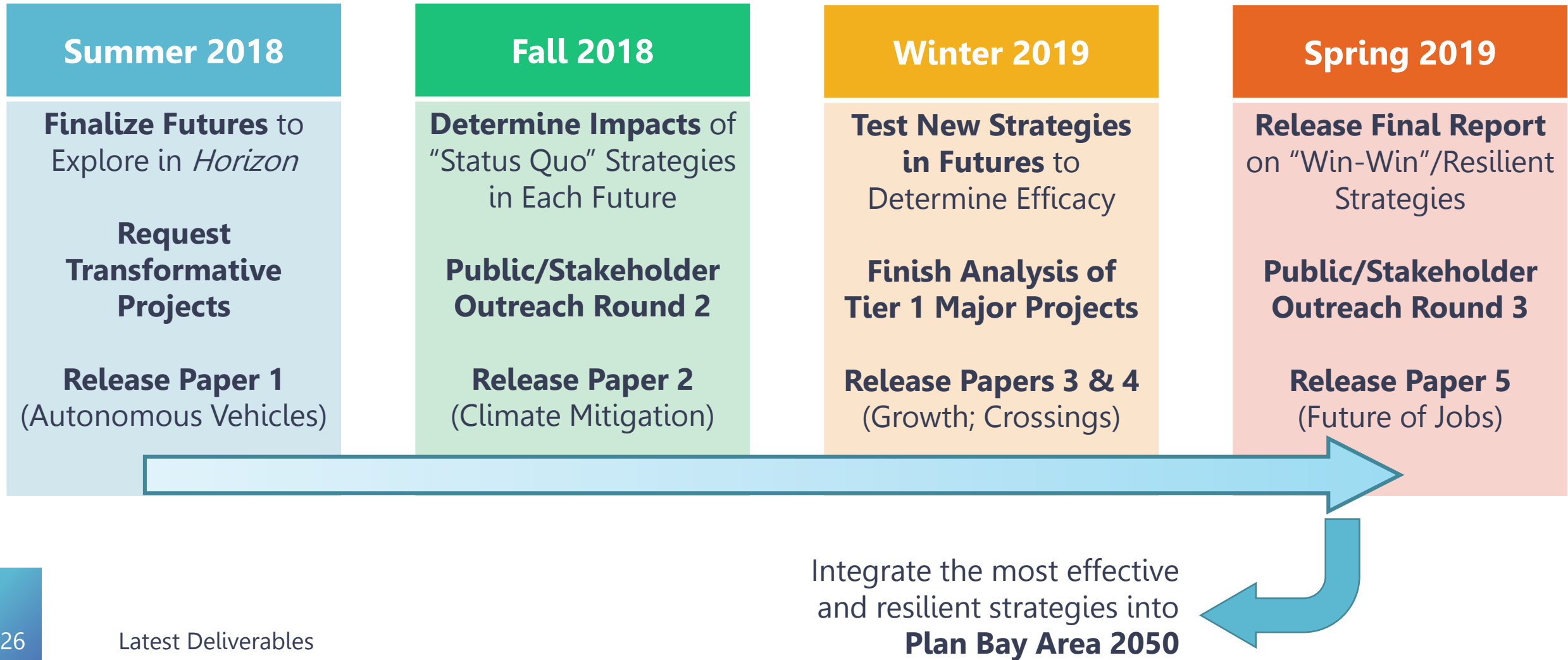
Capital Costs



Net Operating &
Maintenance Costs

$$\text{Benefit-Cost Ratio} = \frac{\text{Benefits}}{\text{Costs}}$$

What's Next for **Horizon**





H O R I Z O N



Questions?

For more information, go to: mtc.ca.gov/horizon.