

# Metropolitan Transportation Commission Programming and Allocations Committee

May 9, 2018

Agenda Item 2f

## Regional Measure 2 Capital Program: Semi-Annual Update

---

**Subject:** Semi-annual update on the Regional Measure 2 (RM2) Capital Program

**Background:** **RM2 Capital Program**

RM2 was passed by the voters in March 2004 and the Commission began allocating funds in July 2004. The attached staff presentation is the latest semiannual report for the RM2 capital program.

**Allocation/Expenditure Status**

The RM2 Capital Program has a programmed amount of approximately \$1.6 billion, with an additional \$74 million from unneeded financing cost coverage programmed to projects by the Commission in December 2016. As of April 2018, MTC has approved nearly \$1.5 billion in capital allocations, of which over \$1.3 billion has been expended.

**Project Status**

The majority of projects are completed or are on track and under construction. Highlights of this report include the debut of BART's new cars; the opening of the Fairfield/Vacaville Intermodal Train Station to Capitol Corridor service; the start of construction for Caltrain Electrification and the Richmond Ferry Terminal; and continued progress toward expected 2018 openings for the Transbay Transit Center and E-BART (May 26<sup>th</sup>). Construction continues on the San Francisco Ferry Terminal Expansion, AC Transit East Bay Bus Rapid Transit, SMART Larkspur Extension, and I-880 North Safety Improvements in Oakland.

Staff continues to work with sponsors to move projects with remaining unallocated funds toward construction. Overall, staff continues to monitor projects to ensure continued progress.

**Issues:** None

**Recommendation:** Information

**Attachments:** Presentation Slides

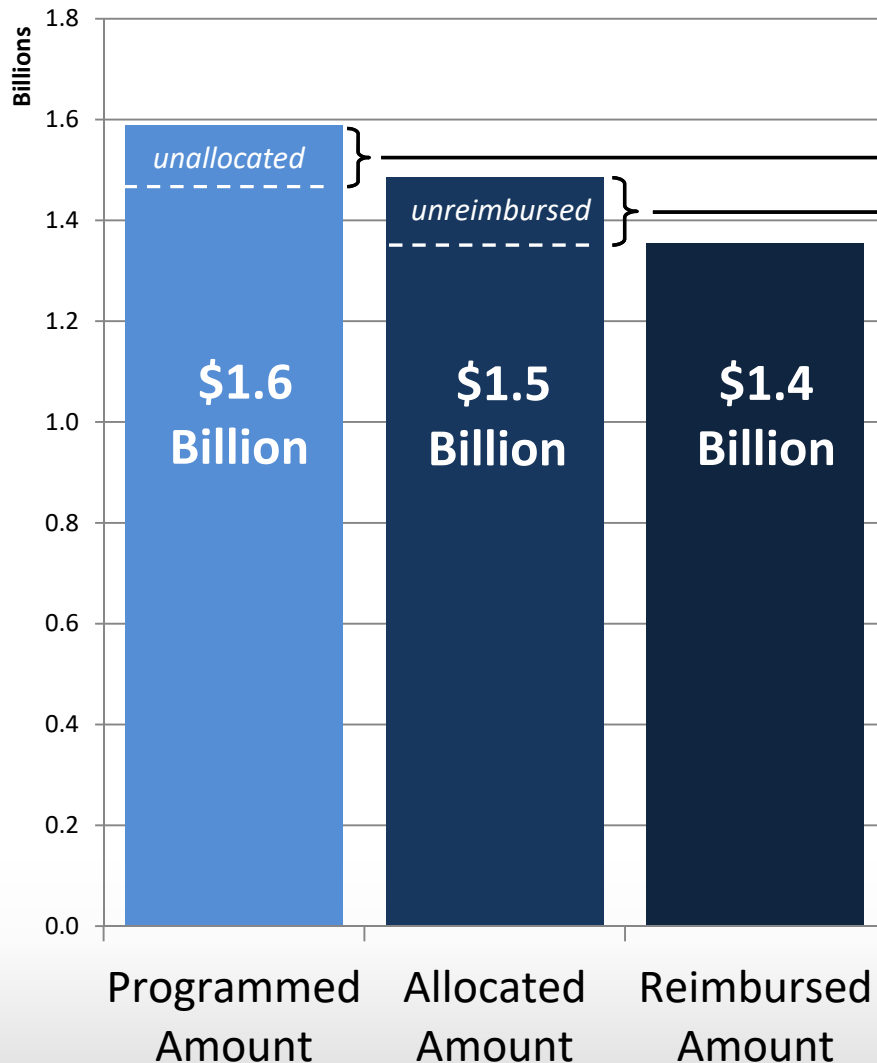
# Regional Measure 2 Capital Program Update



METROPOLITAN  
TRANSPORTATION  
COMMISSION

Programming and Allocations  
Committee  
May 9, 2018

# Capital Program Summary



The remaining \$103 million not yet allocated includes the following projects:

- BART Cars\* (\$40M)
- North South Greenway - Marin (\$14M)
- Clipper\* (\$13M)
- Bay Bridge Forward\* (\$12M)
- I-580 Transit Improvements (\$12M)
- BART/Muni Connection (\$3M)
- Richmond Parkway P&R (\$2M)

The \$132 million not yet reimbursed includes these projects entering, under, or completing construction:

- AC Transit BRT (\$39M)
- BART Extension to Warm Springs (\$17M)
- SF Ferry Terminal Expansion (\$13M)
- Bay Bridge Forward\* (\$8M)
- SMART (incl. Larkspur) (\$6M)
- Ferry Vessels incl. Richmond (\$9M)
- I-680 HOV Lane Connector (\$5M)
- Regional Express Lanes (\$5M)
- Fairfield/Vacaville Train Station (\$5M)
- Safe Routes to Transit projects (\$4M)
- E-BART (\$3M)

\*Project funding added to RM2 program in December 2016

# Program Assessment

- Majority of projects are “On Track” and “Under Construction”, or completed
- MTC monitors projects to minimize risk, provide opportunities for meaningful scope changes, and address funding shortfalls.
- MTC works with sponsors to provide direction, secure additional funds, or phase/down-scope the projects.
- Local construction market strong; could lead to cost escalation.

# BART Cars

- Initial 10 new cars entered service in January 2018
- Approximately 16 cars scheduled to arrive monthly starting in 2018 until all 775 cars delivered under current contract with Bombardier
- An additional 306 cars planned for a second contract – CalSTA awarded \$318 million from SB 1 Transit and Intercity Rail Capital Program (TIRCP) toward BART Transbay Capacity Program



# Fairfield/Vacaville Intermodal Train Station

- Opened for Capitol Corridor service in November 2017
- Major roadway work complete
- Punchlist items ongoing
- Train Station building design underway



# SMART

## Initial Operating Segment

- Full operations underway since August 2017

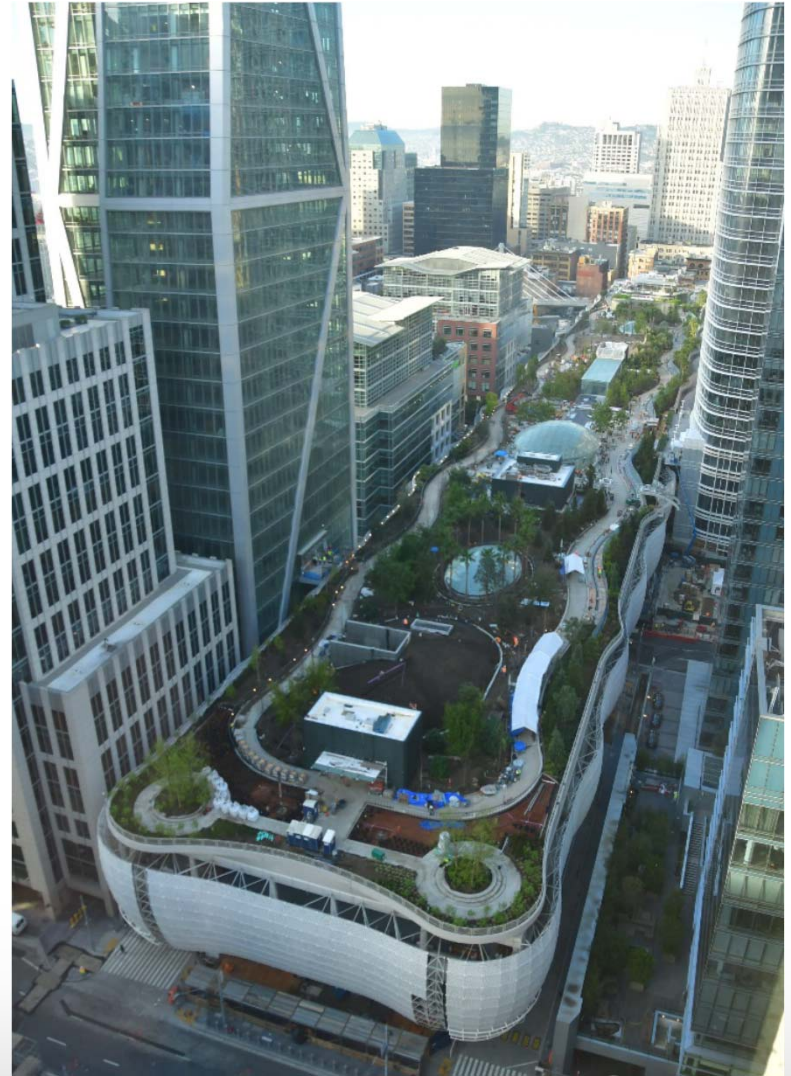
## Larkspur Extension

- Larkspur design/build construction underway
- Federal Small Starts Grant awarded in April
- Extension to Windsor received funding through SB1 TIRCP



# Transbay Terminal

- Construction Progress:
  - Walls, decks, interior, systems, landscaping work ongoing
  - Bus Storage Facility construction progressing on schedule
- Muni #5 bus service began December 2017, bus deck transit operations may begin Summer 2018
- Contractor has committed to June 15, 2018 Temporary Certificate of Occupancy
- Electrical related work is driving schedule



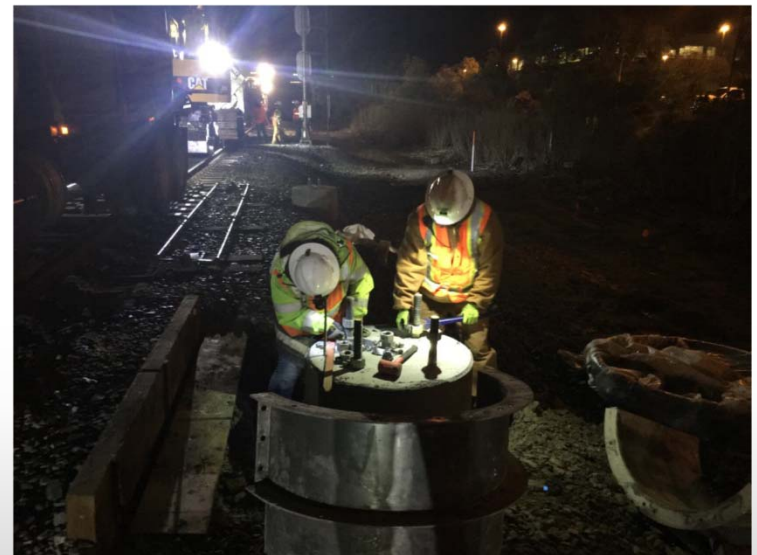
# eBART

- Trackwork, System, and Facility Finishes construction is ongoing – testing is underway
- Vehicles have all been accepted
- Transfer platform, maintenance facility, and parking lot are completed
- Opening announced for May 26



# Caltrain Electrification

- Full notices to proceed issued for Design/Build and vehicle procurement contracts
- Final design continuing
- Overhead catenary system foundation installation underway
- Manufacturing of EMU car shells underway
- CalSTA awarded \$161 million for additional EMU's (beyond scope of electrification project) from TIRCP



# AC Transit East Bay BRT

- Advanced utilities, off-street parking, traffic mitigation packages completed
- Major construction is underway – signals, utilities, sidewalks, curbs
- Project funding gap is likely based on updated risk assessment; AC Transit is planning cost and schedule mitigations and committing additional funding
- Revenue service target is late 2019



# Ferry Projects



- Richmond Terminal and vessels construction underway
  - Waterside pile installation complete, construction underway
  - Landside improvements underway
  - Expected opening Fall 2018
- SF Terminal expansion construction continues
  - Dredging and demolition complete
  - Promenade, pedestrian bridge, and gate construction underway
  - Expected opening in late 2019

# I-80/I-680/SR-12 Interchange – Solano County

- Initial Construction Package (WB 80 – WB 12 Connector): Open for use
- Utility relocations complete
- PS&E being prepared for subsequent construction packages
  - Package 2a: EB12 – EB 80 Connector
  - Package 2b: Red Top Road Interchange
  - Package 3: I-80/I-680 Interchange



- CTC recommended \$53 million in SB1 Trade Corridor Enhancement Program for Phase 2a construction

# I-880 North Safety Improvements



- Reconstruction of I-880 in Oakland from 29<sup>th</sup> Ave to 23<sup>rd</sup> Ave
- Total cost: \$102 million
- Construction approximately 70% complete
- Reconstruction of 29<sup>th</sup> Ave overcrossing completed, partially open to traffic
- Current focus on new off-ramp structure at 29<sup>th</sup> Ave and reconstruction of 23<sup>rd</sup> Ave structures

## I-680 Express Lanes



- I-680 SB from Marina Vista to Rudgear
- Environmental phase completed in December 2016
- CCTA has prepared 100% design
- Project expected to advertise for construction this year and open in 2020

## Bay Bridge Forward



- West Grand Ave HOV/Bus Lane and Commuter Parking Initiative expected to open by end of 2018
- HOV enforcement and Vehicle Occupancy Detection Pilots underway
- Casual Carpooling Initiative underway; identifying opportunities for improvements and new pick-up spots

# RM2 Program - Look Forward

- Several major projects opening in 2018
- Working with sponsors who have unallocated funds
- Tracking New Starts/Small Starts projects closely
- Coordinating with other major funding programs and related projects

