

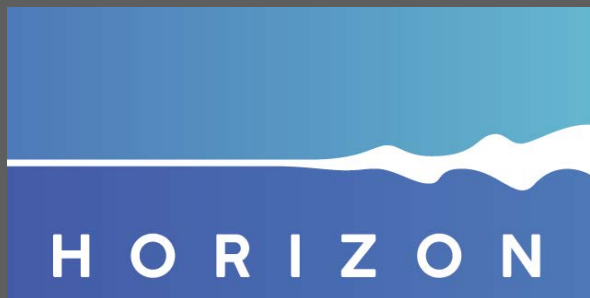
**Illustrative**  
Visionary  
Transit Map



*Horizon Guiding Principles +  
Horizon Peer Exchange Report-Out +  
Project Performance Assessment*  
May 1, 2018

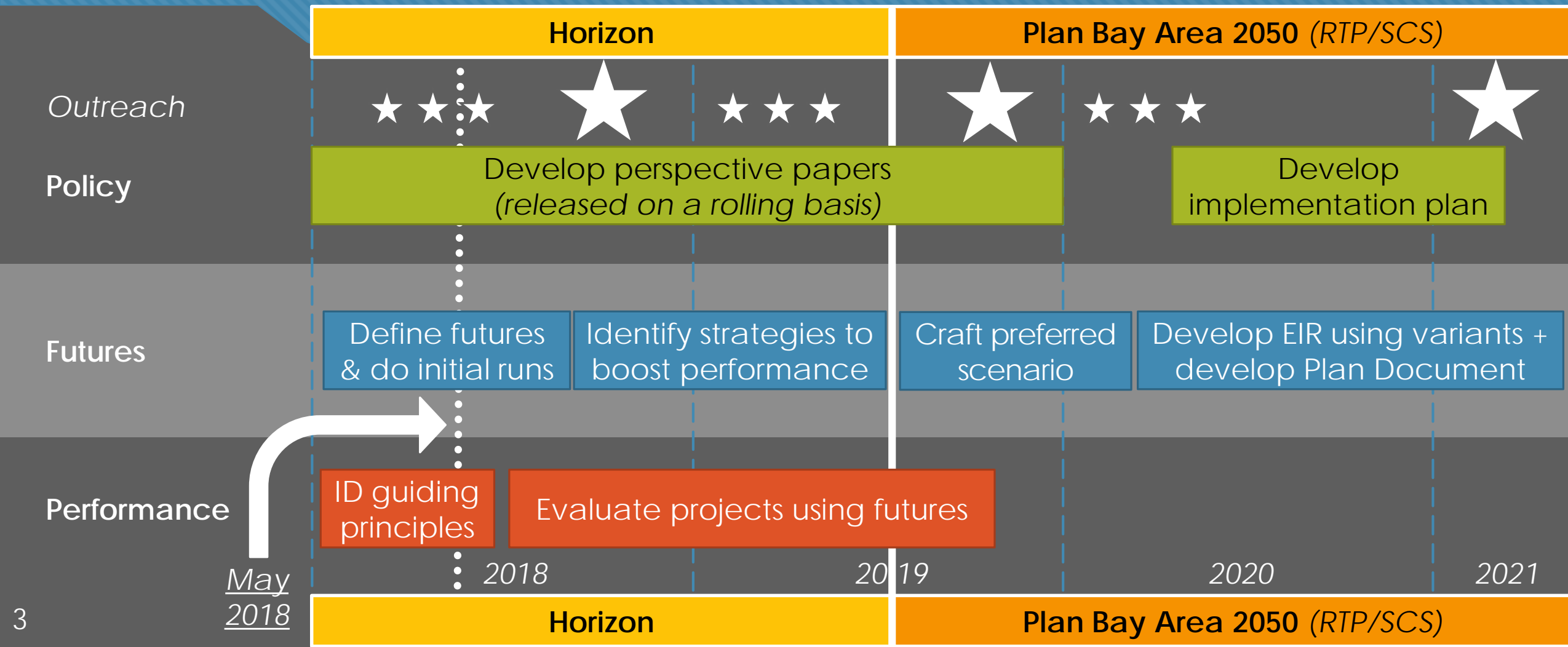


North Bay



## Overview and Current Schedule

# Process Overview





# Current Status

## Overall Schedule

- Entering month 4 of the 18-month **Horizon** planning process

## Guiding Principles

- Guiding principles are in the process of being finalized based on feedback
- Principles will be used to inform all elements of **Horizon**

## Outreach

- 28 pop-ups during February & March + online survey
- Received ~10,000 comments to inform Guiding Principles

## Futures

- Peer exchange generated “universe” of ~10 futures
- Online surveying & stakeholder engagement will guide selection of 3-4 futures

## Policy Papers

- 5 papers currently under development
- First is related to autonomous vehicles and will be released next month

## Project Performance

- Focus of detailed presentation today – looking for feedback on overall approach
- Will delve into methodology development this summer





San Jose



## Guiding Principles - *Revised*



## Affordable

All Bay Area residents and workers have sufficient access to housing options they can afford – households are economically secure.

## Connected

An expanded, well-functioning transportation system connects the Bay Area – fast, frequent and efficient intercity trips are complemented by a suite of local transportation options, connecting communities and creating a cohesive region.

## Diverse

The Bay Area is an inclusive region where people from all backgrounds, abilities, and ages can remain in places with access to the region's assets and resources.

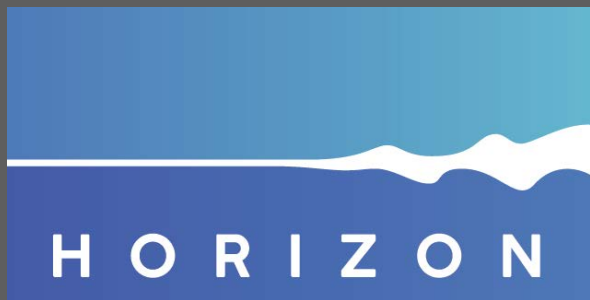
## Healthy

The region's natural resources, open space, clean water and clean air are conserved – the region actively reduces its environmental footprint and protects residents from environmental impacts.

## Vibrant

The Bay Area region is an innovation leader, creating job opportunities for all and ample fiscal resources for communities.





## Report Back from Peer Exchange (Create-a-Future)



# How Might We Select the Shortlist of Futures?

Likelihood

Impact  
on Bay  
Area

Ability to  
Mitigate  
Impacts





H O R I Z O N

PLAN BAY AREA 2050

# Project Performance Assessment

# Two Primary Goals



Ensure  
**transparency and  
accountability** for  
major investments

Assess next  
generation of  
**transformative  
projects**



***Horizon*** is a new process which means we have an opportunity to enhance our evaluation approach from the past two cycles.

Contingent on staff time and model availability, **we believe there is value in linking project performance to futures – to identify projects that are resilient to a broader range of external circumstances.**



# Overall Approach

## Plan Bay Area 2040

Benefit-Cost  
Assessment

Targets  
Assessment

Supplemental  
Assessments



## Horizon & Plan Bay Area 2050 *(proposed)*

Benefit-Cost  
Assessment

Guiding Principles  
Assessment

Supplemental  
Assessments



# Proposed Approach for This Cycle

## Benefit-Cost Assessment

- Propose analyzing cost-effectiveness in **each future**
- Update technical methodology to reflect current best practices & leverage new Travel Model Two features

## Guiding Principles Assessment

- Use Final Guiding Principles as screening criteria to flag projects that do not support one or more principles

## Supplemental Assessments

- Equity Assessment – similar to Plan Bay Area 2040
- Confidence Assessment – similar to Plan Bay Area 2040

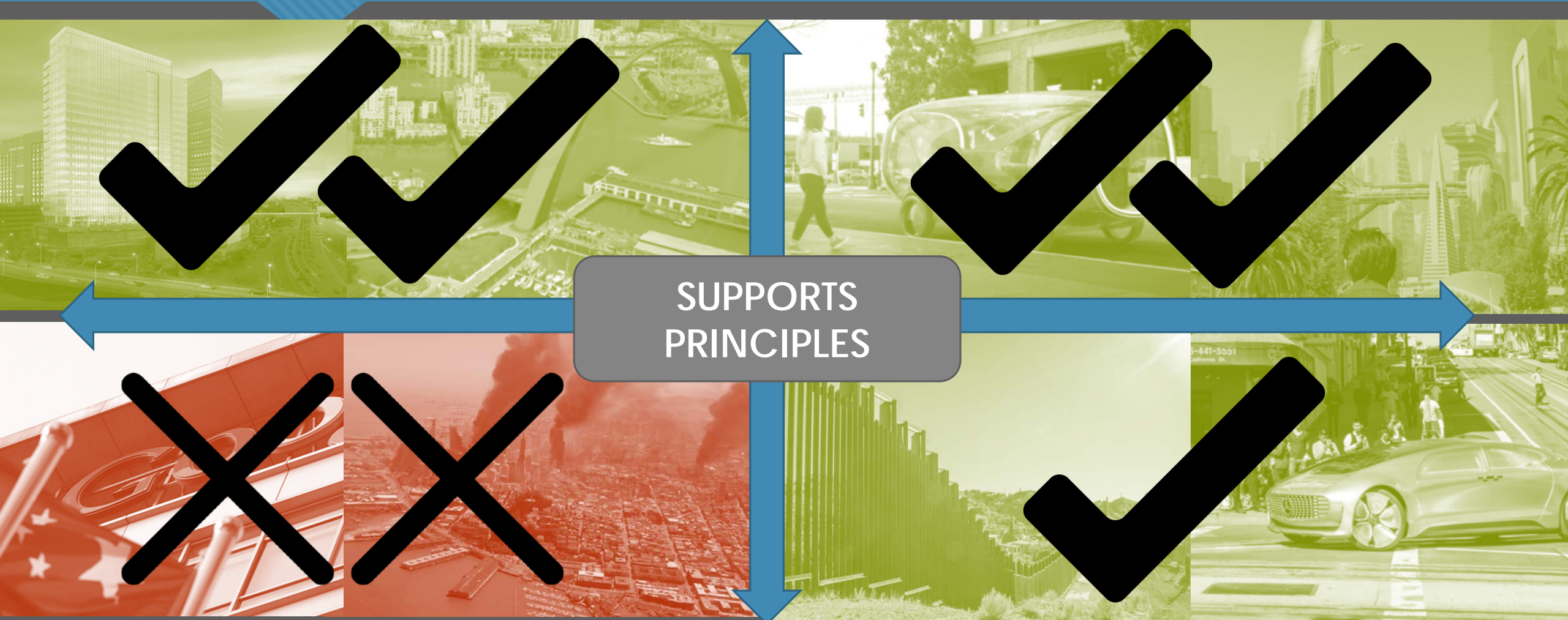


# Example Project Score



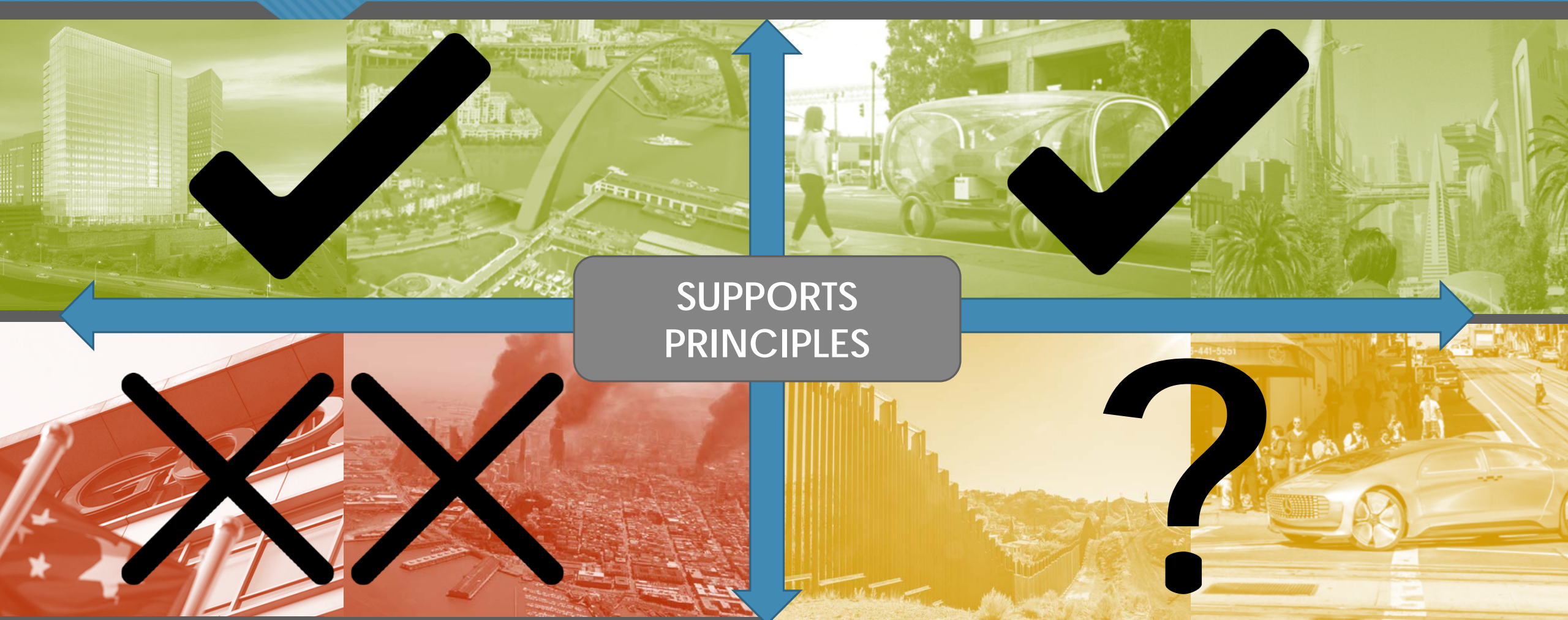


# High-Performing Project (example)



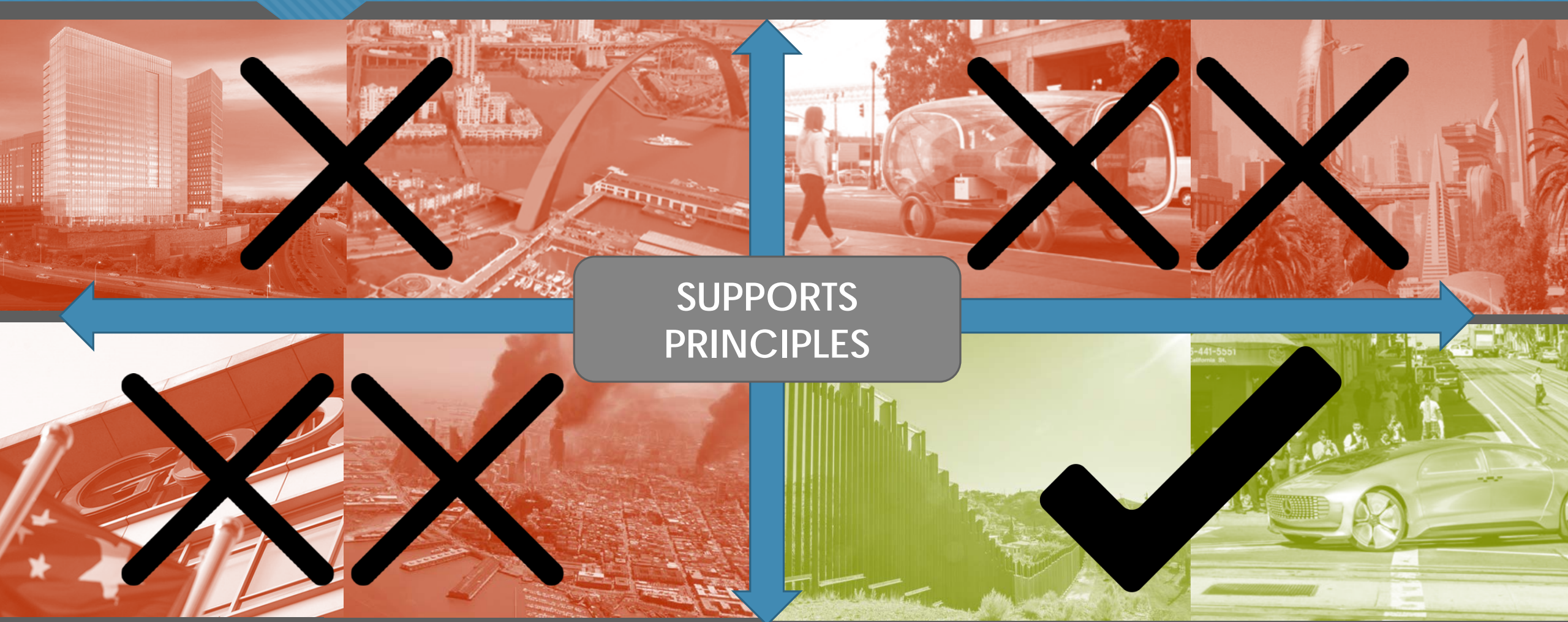


# Medium-Performing Project (example)





# Low-Performing Project (example #1)





# Low-Performing Project (example #2)



# Proposed Thresholds

For reference:  
PBA40 threshold  
>\$100M

## Major Projects Update

- Update scope/costs/etc. for **tier 1 major projects (>\$1B)** and **tier 2 major projects (\$250M-\$1B)** with CMAs & major transit operators
- Also update baseline project details (e.g., under construction)

## Round 1 Analysis

- Analyze existing **tier 1 major projects (>\$1B)**
- Analyze new vision projects (>\$1B) from transportation agencies + 5-10 projects from NGOs/public/etc. + operational strategies

## Round 2 Analysis

- Analyze **tier 2 major projects** with costs of **\$250-\$1B** submitted by CMAs and major transit operators
- Analyze any **tier 1 major projects** identified after September 2018

## High & Low Performers

- High-, medium-, and low-performing thresholds would be developed with Planning/Admin Committees in **spring 2019**



# Proposed Timeline

## Major Projects Update

- **Update Process** – early May through early July
- **CMA/Major Operator Role:** confirm & update information for currently proposed projects

## Round 1 Analysis

- **Transformative Investments Request** – early June to early Sept.
- **CMA/Major Operator/NGO/Public Role:** submit visionary major projects not in PBA40

## Round 2 Analysis

- **Integrated RTP/TIP Call for Projects** – March to June 2019
- **CMA/Major Operator Role:** more similar to past Call for Projects, but with a goal of reducing administrative burden

## High & Low Performers

- **Round 1 Process** – Spring 2019; **Round 2 Process** – Fall 2019
- **CMA Role:** coordinate with affected project sponsors (similar to past cycles)

# Uncommitted Tier 1 Major Projects (15)

>\$1 billion AND either capacity-increasing OR SLR resilience project OR transformational operational strategy

- **Pricing:** Downtown SF Congestion Pricing
- **BART** to San Jose Phase 2\*\*
- **BART** Metro
- **Caltrain** Downtown Extension
- **Express Lanes** Regional Network
- **Frequency:** VTA Bus/LRT Frequency Increase
- **Frequency:** AC Transit Frequency Increase
- **LRT:** 19<sup>th</sup> Avenue Subway
- **LRT:** Downtown San Jose Subway
- **LRT:** Stevens Creek LRT
- **BRT:** Geneva-Harney BRT
- **Tollway:** TriLink Tollway
- **Tollway:** SR-152 Tollway
- **Tollway:** SR-17 Tollway + LRT
- **Other:** Regional Ferry Network

\*\* = if FFGA for this project is signed before project is subject to assessment, project would be fully funded and thus committed (exempt from assessment)





# Uncommitted Tier 2 Major Projects (23)

*\$250 million to \$1 billion AND either capacity-increasing OR SLR resilience project OR transformational operational strategy*

- **Pricing:** Treasure Island Congestion Pricing
- **Caltrain** Modernization Phase 2
- **eBART** Phase 2
- **SMART** Phase 3
- **Frequency:** Sonoma Frequency Increase
- **Frequency:** Muni Forward + Frequency Increase
- **Frequency:** VTA Express Bus Frequency Increase
- **Interchange:** I-680/SR-84 Interchange + Widening
- **LRT:** Capitol Expressway LRT Phase 2
- **LRT:** Vasona LRT Phase 2
- **LRT:** North Bayshore LRT
- **BRT:** El Camino Real BRT
- **BRT:** Geary BRT
- **BRT:** San Pablo BRT
- **ITS:** Columbus Day Initiative
- **Freeway:** Lawrence Freeway
- **Freeway:** I-680/SR-4 Interchange
- **Freeway:** SR-4 Auxiliary Lanes
- **Freeway:** SR-4 Widening
- **Freeway:** I-80/I-680/SR-12 Interchange Improv.
- **Other:** Bay Bridge Bike Path
- **Other:** Better Market Street
- **Other:** Southeast Waterfront Improvements

# What New Projects Might Be Submitted?

*>\$1 billion AND either capacity-increasing OR SLR resilience project OR transformational operational strategy*

## Vision Projects Not Submitted for PBA 2040

- 2<sup>nd</sup> Transbay Tube
- Southern Crossing/Mid-Bay Bridge
- SR-92 Widening
- BART to Livermore
- ACE Forward
- BART to Richmond/Sunset Districts
- SMART to Solano County
- Dumbarton Rail
- SR-85 LRT/BRT
- SR-37 Widening/Resilience Project
- Central Subway Extension
- Capitol Corridor Vision

## New Ideas from Stakeholders & Public

- **Resilience Projects** ★
- **Transformational Operational Strategies** ★
- BART Extension from Millbrae to San Jose
- New BART Line from Concord to Dublin
- 2<sup>nd</sup> Transbay Tube
  - The Boring Company
- eBART to Stockton
- SMART to San Francisco via Golden Gate Bridge
- New Freeway Corridors in Santa Clara County
- US-101 Tunnel in San Francisco
- New Subway Lines in San Francisco
- New Network of Aerial Trams/Gondolas
- Automated Vehicle Lane Network

Open to  
**packages of  
investments**  
when cost  
does not  
exceed \$1  
billion



# Transformative Investments Submission

## Proposed Questions for Online Form

### All Submissions

- Project Name
- Submitter Name, Affiliation & Contact Info
- Project Description
  - Roads: route, endpoints, direction, capacity, facility type, tolls, etc.
  - Transit: mode, route(s), stops, frequencies, fares, etc.
  - Strategy: brief description, intended objective(s)

### Government Agencies Only

- Lifecycle Project Cost\*
  - Capital Costs
  - Annual Operating & Maintenance Costs

### All Other Submitters\*\*

- Open Response Questions
  - What is the **greatest opportunity** associated with this investment/strategy?
  - What is the **greatest risk** associated with this investment/strategy?

\* = MTC/ABAG is seeking input on how to ensure that SLR mitigation costs are incorporated; costs should be in year 2021 dollars.

\*\* = For projects not submitted by government agencies, project cost will be estimated by MTC/ABAG.

# *Transformative Investments Submission*

## How Will Projects from Public Be Selected?

- In September, a “jury” of **public- and private-sector experts** will review projects & strategies proposed by the public to identify the best ideas that merit further evaluation.
- Criteria will be identified at a future RAWG meeting, but **feasibility/deliverability, alignment with Guiding Principles, and potential efficacy in solving regional challenges** would likely be considered when narrowing down the list.





# Integrating Resilience Investments

- Given the scope of *Horizon* and *Plan Bay Area 2050*, MTC/ABAG is interested in evaluating non-capacity-increasing projects that are specifically designed to improve resilience of the system, in particular to address sea level rise.
- Facilities at the highest level of risk through 2050 include: SR-37, SR-237, US-101 (Marin, San Mateo, Santa Clara), bridge approaches, and several transit facilities.
- **Open question:** should resilience projects **unrelated to transportation infrastructure** be assessed through this element of Horizon/PBA 2050 as well?

State Route 37





# Integrating Operational Strategies

- For **Horizon**, staff is also interested in exploring transportation strategies that are operational in nature, with costs below the project performance cost thresholds but with significant regional impacts.
- Similar to projects submitted by the public, the “jury” of experts will select a handful of the most promising operational strategies for analysis.
- Example strategies:
  - Odd-even license plate days
  - Comprehensive speed camera network
  - Significant vehicle VMT tax
  - Regional ban on gas/diesel-powered vehicles





# What's Next for Project Performance?

- Major Projects Update Process – starts in early May with CMAs & operators
- Request for Transformative Investments – open to all starting in early June
- Project Performance Methodology – summer RAWG presentation(s)





# Other *Horizon* Milestones Ahead

- Proposed Shortlist of Futures – June
- Release of Perspective Paper #1 (Autonomous Vehicles) – June
- Final Futures for Analysis – July
- “Status Quo” Analysis of Futures – through September/October
- Release of Perspective Paper #2 (TDM/Climate) – September

