

Transportation Funding Overview



Programming & Allocations Section

November 2017

Programming & Allocations

Main Functions

- Fund Programming, Monitoring, Forecasting
- Project Oversight
- Policy Analysis and Specialized Studies
- Asset Management
- Stakeholder Outreach/working groups



The Revenue Picture

- What are the various revenue programs?
- Where does the revenue come from?
- How much comes to MTC?



Key Transportation Funding Decision — Makers

Federal Funds

- FHWA & FTA
- Caltrans
- MTC

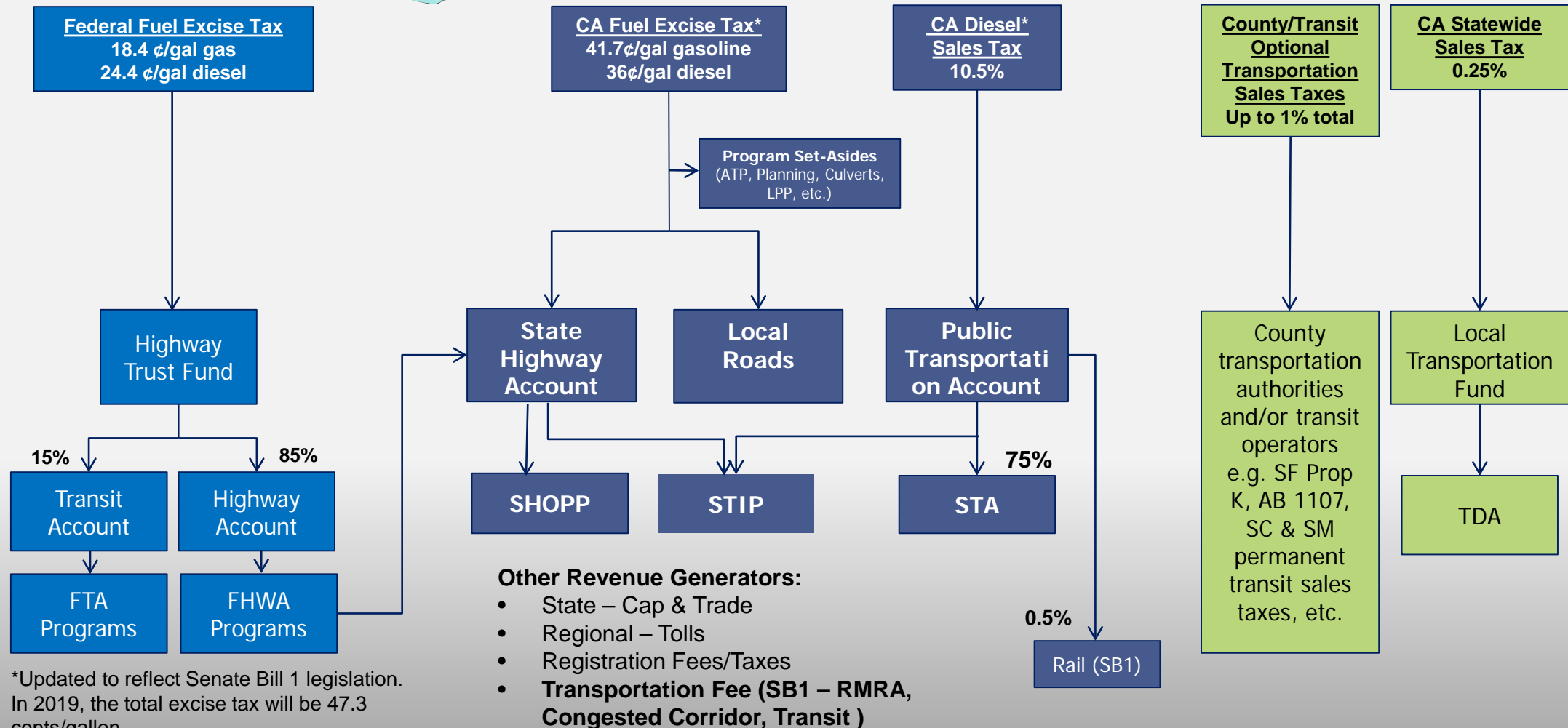
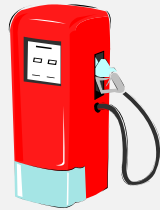
State Funds

- CA Legislature
- CTC
- CARB / SGC / Other
- Caltrans
- CalSTA
- MTC

Regional & Local Funds

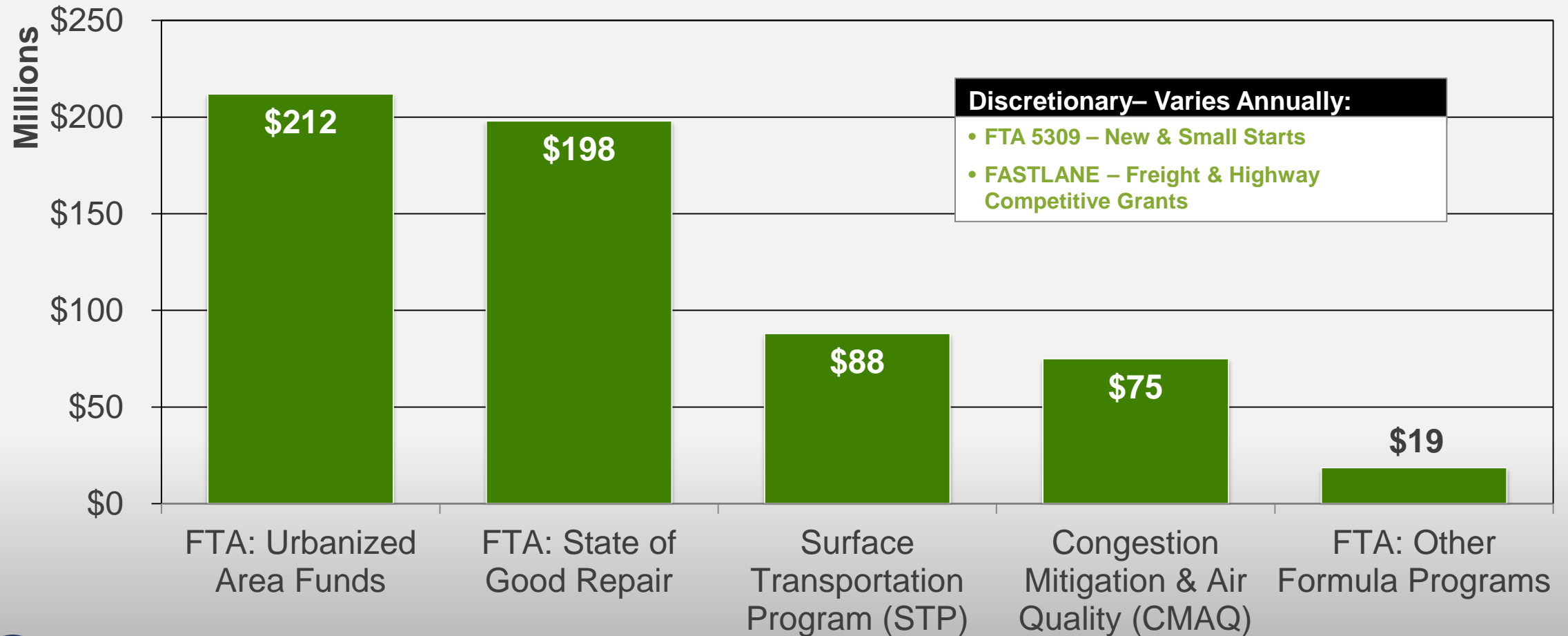
- MTC/BATA
- CMAs
- Transit Agencies
- Cities/Public Works Departments

Revenue Generation — Simplified



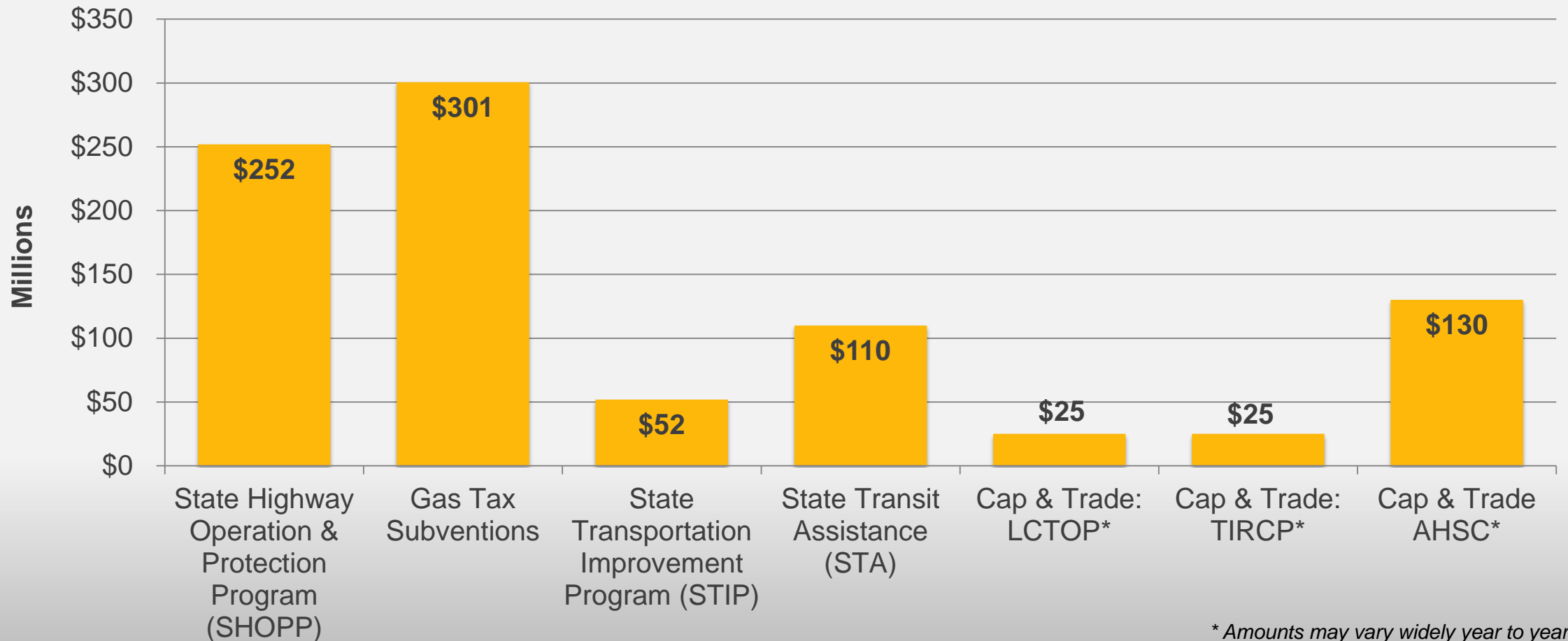
Funding Sources: Federal

Annual Revenue Amounts — 2016



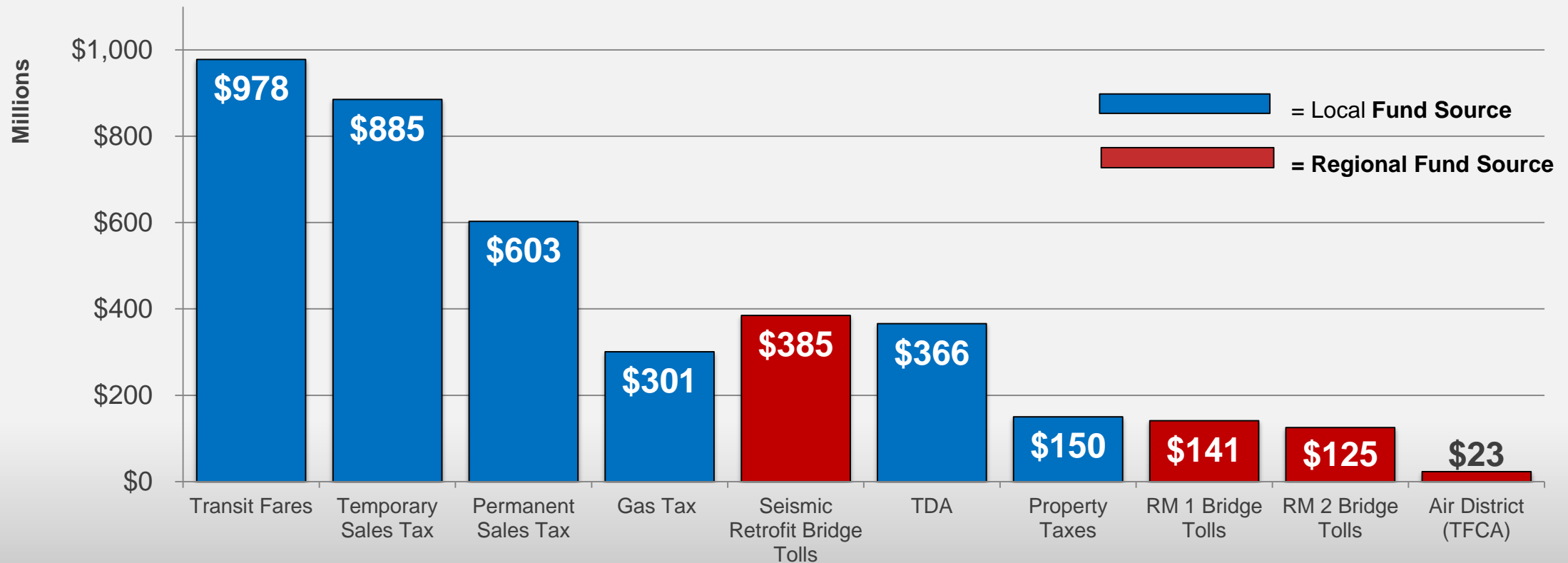
Funding Sources: State

Annual Revenue Amounts



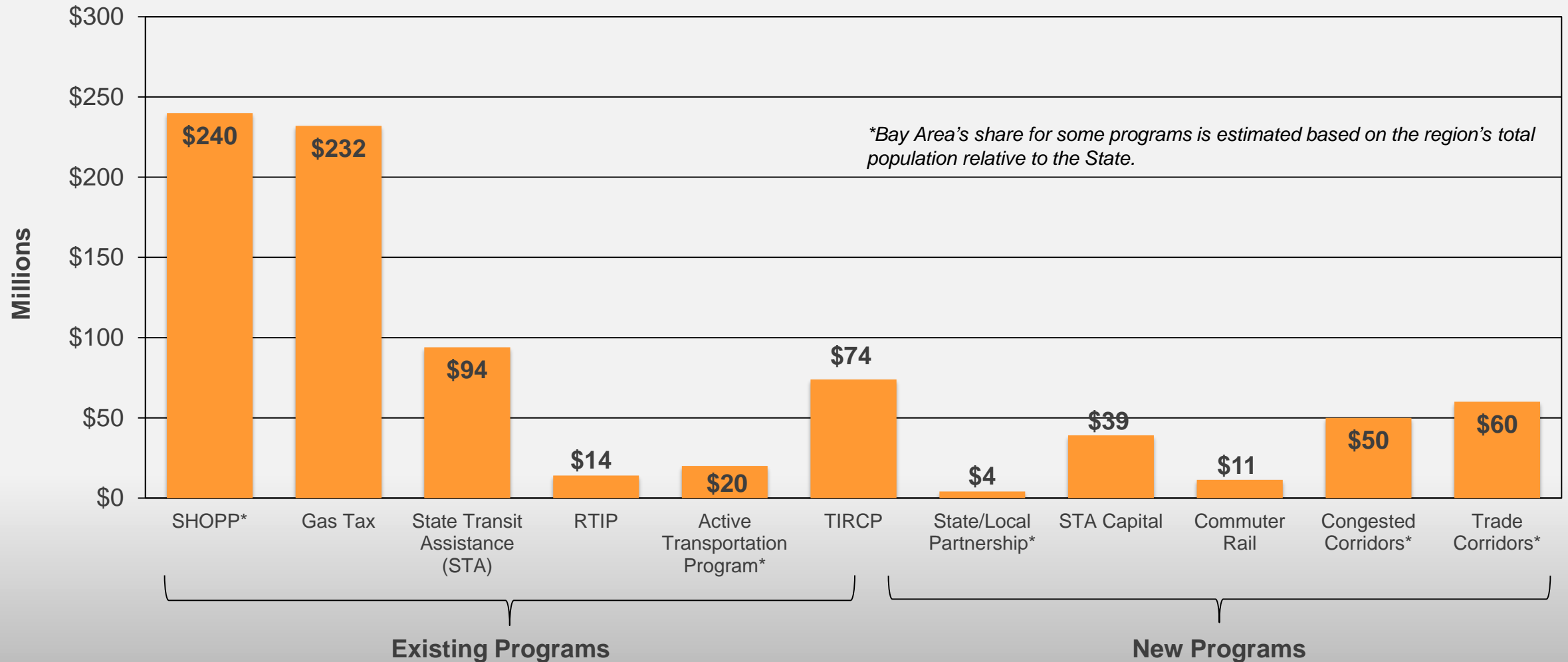
Funding Sources: Local & Regional

Annual Revenue Amounts — 2016



Estimated SB1 Program Revenue Increases

Annual Revenue Increase Anticipated in FY 2018-19



Major Funding Programs

- How does MTC assign funds?
- Which revenue sources support which MTC programs?
- Who gets how much?
- What are the program cycles / timing?



General Process for Programming Funds

1. Prepare program guidelines, typically approved by Commission
2. Conduct project selection or fund assignment process
3. Funding recommendations considered at Commission
4. Implement program/projects – varies by program (file grant applications, allocate funds, enter into agreements, etc.)
5. Monitor, assess, adjust/amend
6. For state/federal competitive programs, MTC may endorse projects
7. Stakeholder outreach happens throughout process

Program Funding by Mode / Purpose

	TDA	STA	RM2	OBAG	TCP	ATP	C&T	STIP
Transit Operating	X	X	X		X		X	
Transit Capital	X	X	X	X	X		X	X
Streets & Roads				X				X
Hwys & Regional Operations			X	X				X
Bike/Ped	X			X		X	X	
Local Planning				X				
Climate				X			X	
Low-income, senior, disabled populations	X	X			X	X	X	
Housing				X			X	

Federal Programs

Transit Capital Priorities: \$475 M

- FTA formula funds apportioned by Urbanized Areas (UA)
- Based on operators' highest scoring needs (capped)
- Replacement of buses, trains, ferries and fixed guideway are highest priority

Specialized Programs – with Caltrans

- **FTA 5310** – senior, disabled, elderly transportation services and coordination
 - Approx. every two years, **\$4 M/yr**
- **FTA 5311** – Rural transit services
 - Annual program, **\$2 M**

One Bay Area Grant:

Funding: STP & CMAQ (Five years, FY 2018 – 22):

- Support the Sustainable Communities Strategy
 - Promote investment in Priority Development Areas (PDAs) and Priority Conservation Areas (PCAs)
- **County Program: \$386 M**
 - Provides flexibility to spend on local priorities
 - Incentivizes Housing
- **Regional Program: \$476 M**
 - Support regional initiatives and key programs

State Programs

Active Transportation Program:

- State program for bicycle/pedestrian focused projects
 - 50% Statewide Competitive Program
 - MTC region awarded \$32M out of \$132M (FY 2017)
 - 10% Small Urban and Rural Program
 - 40% Large Urbanized Areas (Regional) Program
 - MTC guidelines and scoring mirror state's, plus regional considerations
 - Regional program = approx. **\$20 M**

State Transportation Improvement Program (STIP):

- State's five-year spending plan for State and Federal funding retained by the State
- 75% Regional Transportation Improvement Program (RTIP) – Programmed by regions / counties
- 25% Interregional Transportation Improvement Program (ITIP) – Programmed by state
- Approximately **\$52 M** annually – Has been highly volatile; expected to stabilize and increase with SB1

Major Funding Programs: Local / Regional

Fund Estimate: **\$654 M**

- Adopted Annually
- Fund Sources = TDA, STA, AB1107, Bridge Tolls, LCTOP
- Basis for transit providers' budgets

STA Population-Based: **\$29M**

- Part of Annual Fund Estimate
- Supports small operators, paratransit, Lifeline program, Clipper/511

Regional Measure 2:

- Funds transit and highway projects in bridge corridors
- Capital program = 39 projects totaling \$1.5B (nearly complete)
- Operating program = 13 projects ranging from express and late night bus service to ferry service to metro service; **\$43 M/yr**

Other Bridge Toll Programs: **\$16M**

- AB664, 2%-5% – Transit capital, ferries, Bay Trail

Examples of Special Studies and Policy Analysis

- **Transit Sustainability Project**
 - Analysis of transit operator cost effectiveness and efficiency, and service
 - Requires transit operators to meet one of three performance targets related to cost containment
- **Asset Management**
 - Manage StreetSaver software – used by every Bay Area city/town to inventory road assets and conditions – annual Pavement Condition Index (PCI) report for best and worst roads
 - Inventory of all transit assets in region – required by FTA and used to assess maintenance needs/costs
- **TIP Investment Analysis**
 - TIP is a federally-required document, listing major regional projects (approx. 900)
 - Every two years, analyze how region's investments are distributed including to minority and low income communities
- **Transit Coordination**
 - SMART – Bus coordination study
 - BART-AC Transit fare coordination study

Upcoming Initiative Related to Housing Crisis

- Per Commission direction, and consistent with CASA:
 - Staff to develop potential criteria to link housing performance (including production, preservation, and protection) with funding decisions, that would consider all funding sources
 - Complete by July 1, 2018 for public/stakeholder and Commission review
- Past housing-related actions have included:
 - Direct investment (modest) – example: TOAH program
 - Funding conditions (significant) – example: OBAG county program
 - Rewards (in the middle) – example: “80k x 2020” program

