

Policy Advisory Council Orientation

Electronic Payments Section

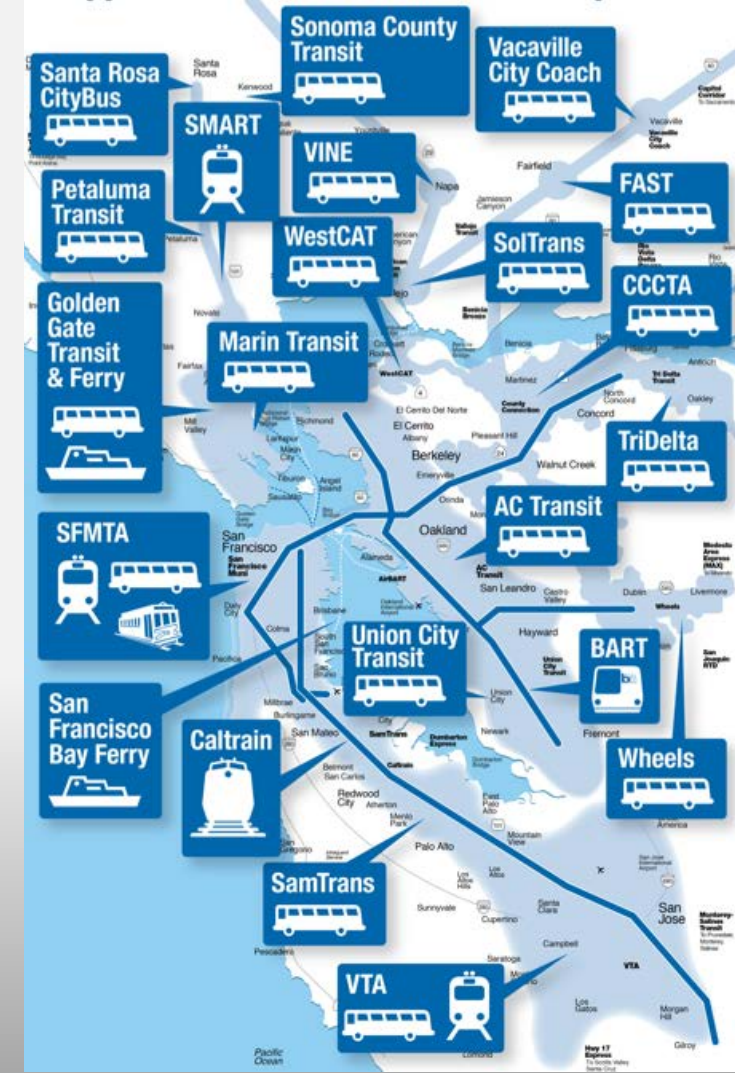
Carol Kuester, Director
November 2017



Electronic Payment Responsibilities



CLIPPER Transit Fare Payment System



Clipper Overview

- **Bay Area transit fare payment system**
 - Available to virtually all Bay Area transit riders
 - Accepted on 22 transit agencies
 - Includes buses, street cars, light and heavy rail, cable cars and ferries
 - Clipper card stores passes and cash value
 - System automatically calculates discounts and transfers



Clipper Today



952,000

Unique Cards Used Each Month

50%

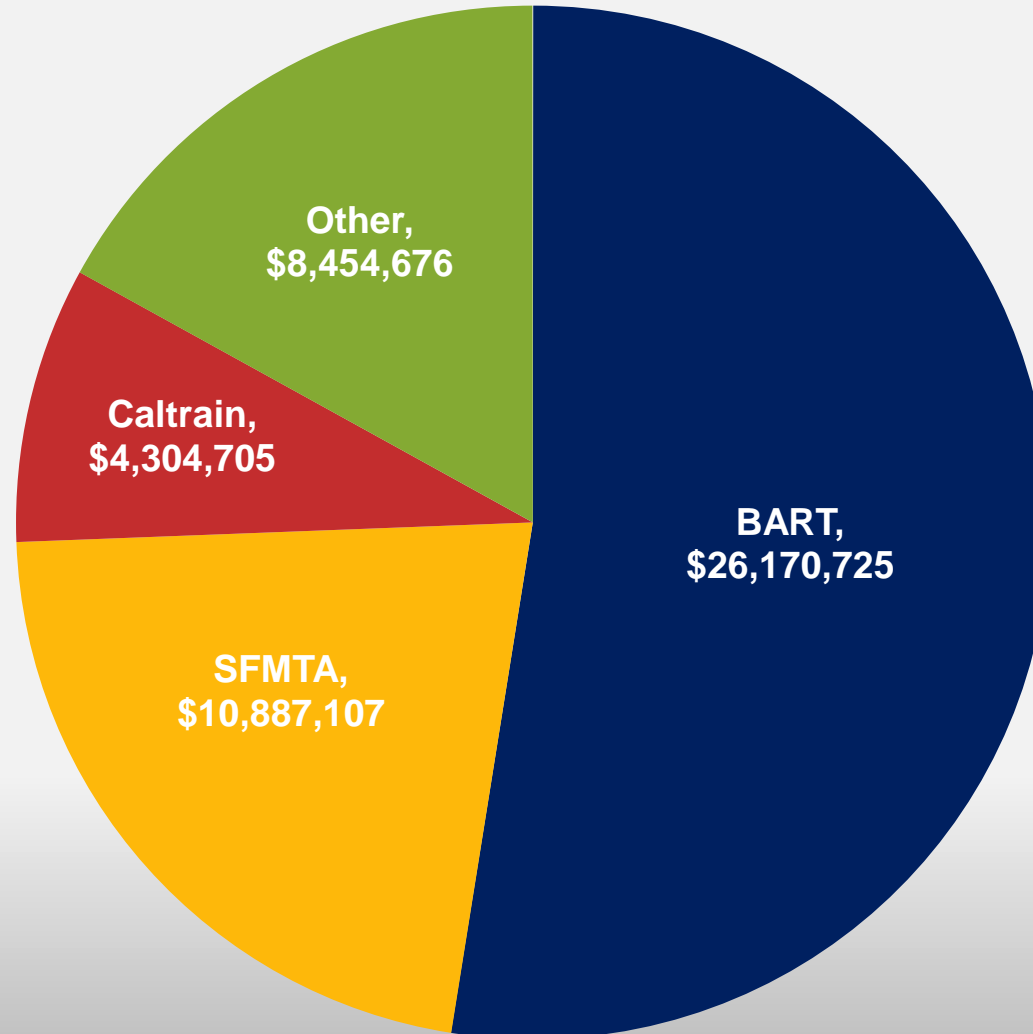
Market Share

\$46M

Monthly Transit Operator Revenue

Monthly average August 2016 to August 2017

Monthly Revenue by Transit Agency



Data from August 2017

FasTrak[®] Toll Collection System



Bridge Tolls



Express Lanes



SFO Parking

FasTrak Today



1.2 million

Toll Tags Used Each Month

69%

Market Share

\$51M

Monthly Toll Revenue Collected

Monthly average August 2016 to August 2017

State Bridge FasTrak Usage

Bridge	Peak Period % FasTrak*	Annual Traffic**
SF-Oakland Bay	78%	44,200,000
Carquinez	62%	20,000,000
Benicia-Martinez	68%	18,200,000
San Mateo-Hayward	73%	16,200,000
Richmond-San Rafael	67%	12,500,000
Dumbarton	75%	9,900,000
Antioch	51%	2,200,000
TOTAL	75%	123,200,000

* July 18, 2017

** FY 2016-17



Golden Gate Bridge All Electronic Tolling (AET)

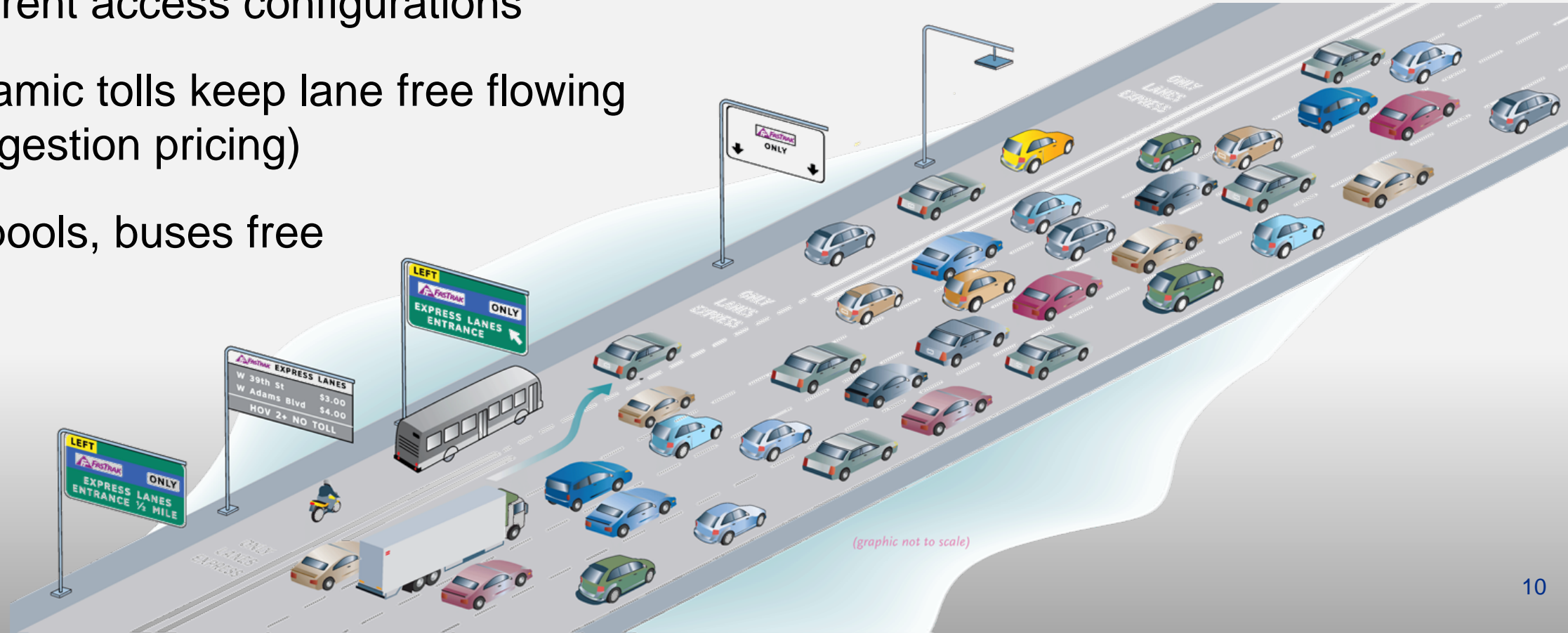
Cash collection removed from toll plaza in March 2013



- **Toll collection methods**
 - License plate image used to bill the registered vehicle owner
 - FasTrak tag
- **Introduced new payment options**
 - Image based license plate accounts
 - Cash payment kiosks at retail locations

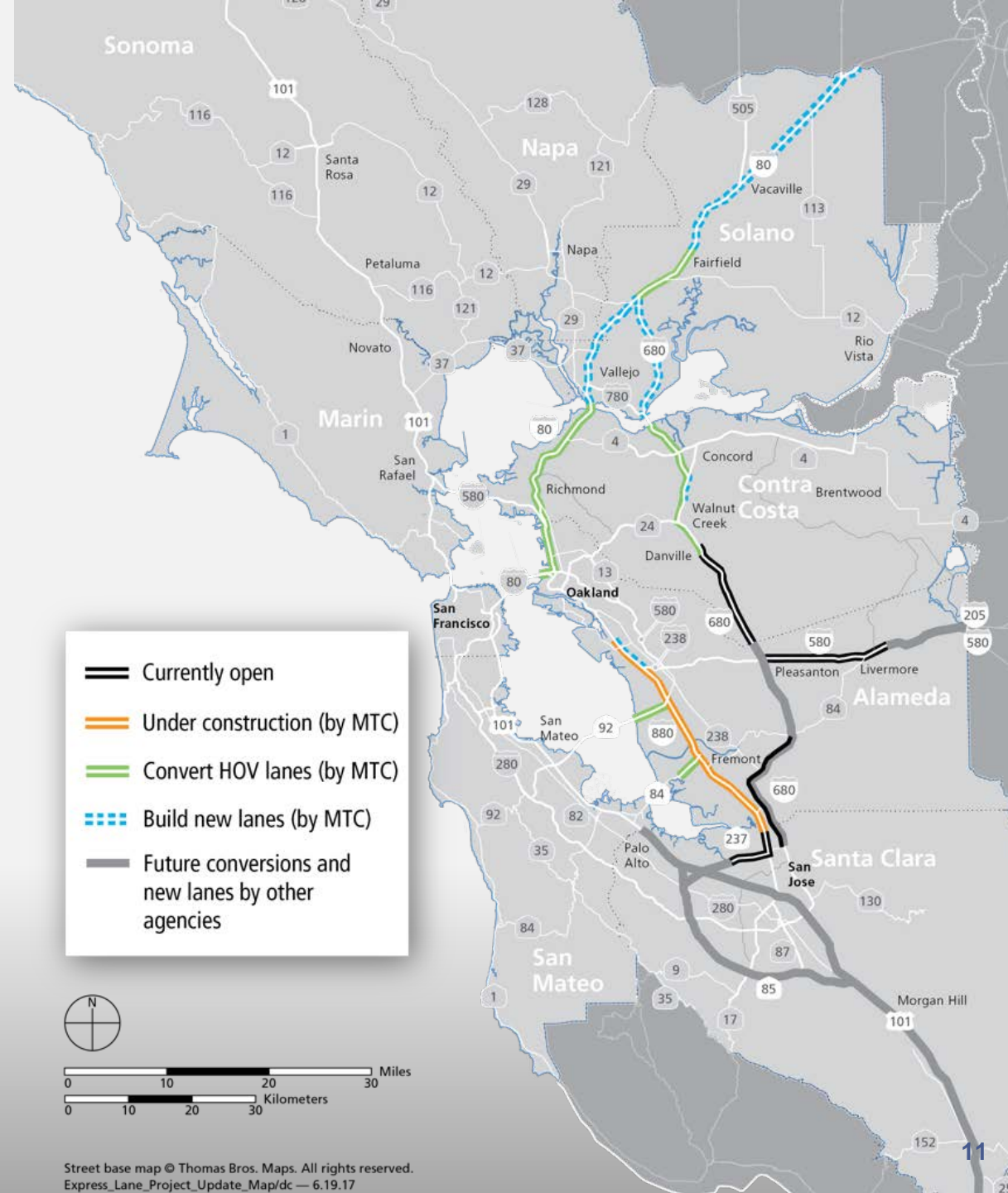
Bay Area Express Lanes

- Single lane, not reversible
- Different access configurations
- Dynamic tolls keep lane free flowing (congestion pricing)
- Carpools, buses free



Express Lane Network

- **550-Mile Network Planned**
 - 75 miles existing express lanes
 - 265 miles converted HOV lanes
 - 210 miles new lanes



Challenge: More People, Fewer Cars

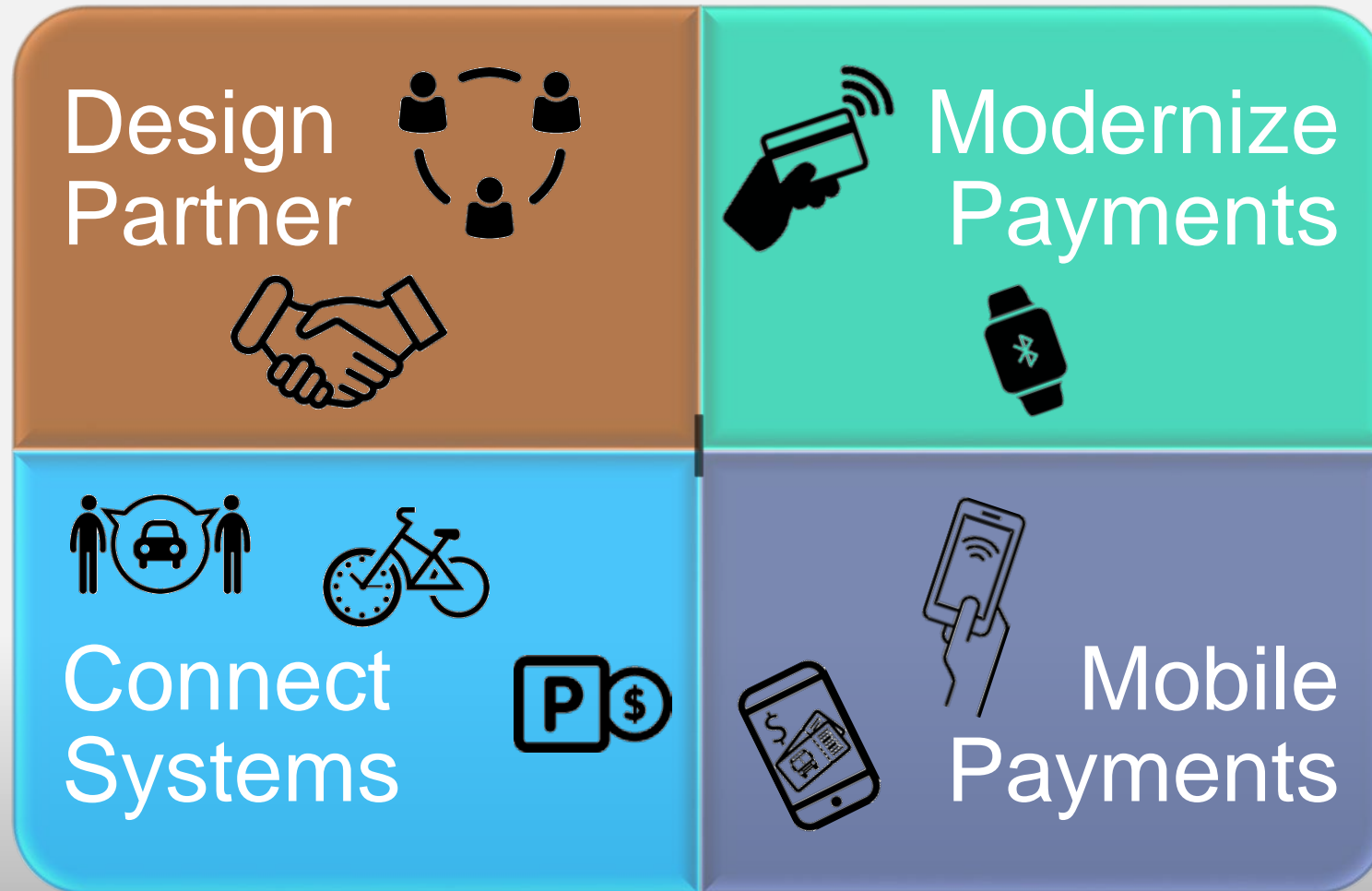
- The more people use shared modes, the more likely they are to use public transit, own fewer cars and spend less on transportation overall.

Question:

- To what extent would an integrated payment platform motivate people to use shared modes?



A Solution Ready for the Future





Carol Kuester, Director
Electronic Payments Section

ckuester@bayareametro.gov
415.778.5253