

Bay Area Regional Advance Mitigation Planning



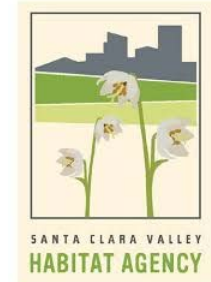
Joint MTC Planning Committee with the
ABAG Administrative Committee

June 9, 2017

Regional Advance Mitigation Planning

- **Goal:** Expedite project delivery and achieve meaningful conservation outcomes. Specifically, we aim to:
 - Save time
 - Save money
 - Improve project delivery and conservation outcomes
 - Encourage agency communication

Technical Advisory Committee



Aware and/or Advising



California Strategic Growth Council



Stakeholder Advisors

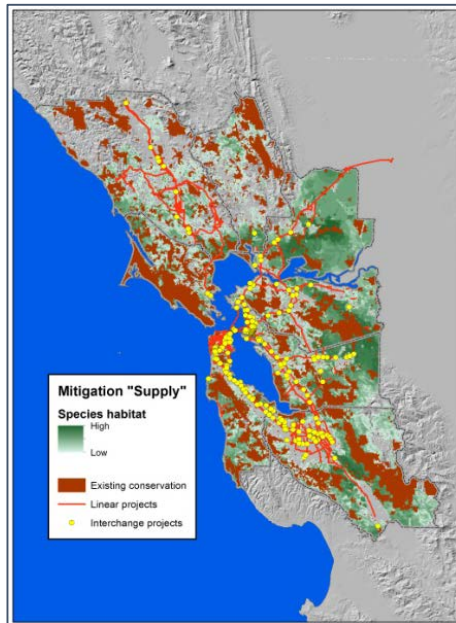


Craig Denisoff
Consulting



RAMP Planning Methodology

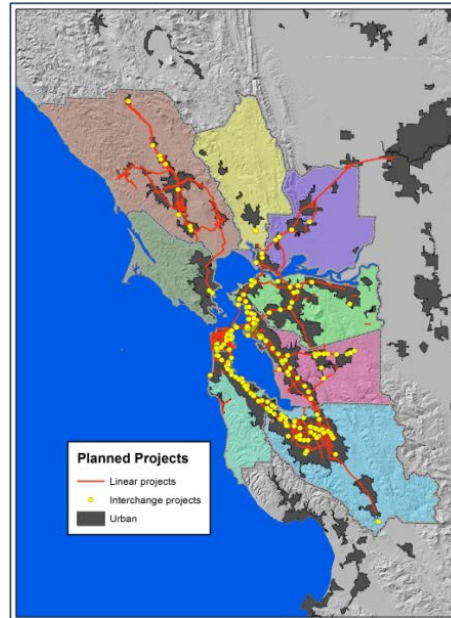
Identify Regional
Conservation Values
and Priorities



1



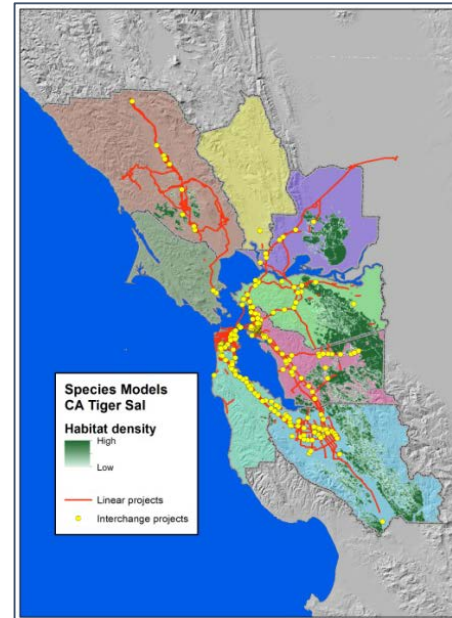
Identify Planned
Transportation
Projects



2



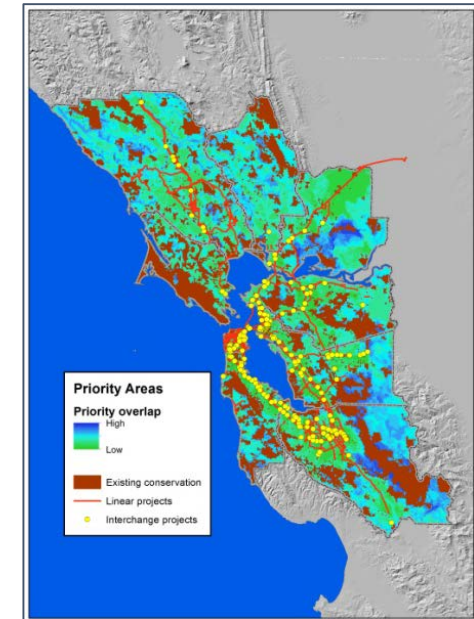
Estimate Potential
Impacts and
Mitigation Needs



3

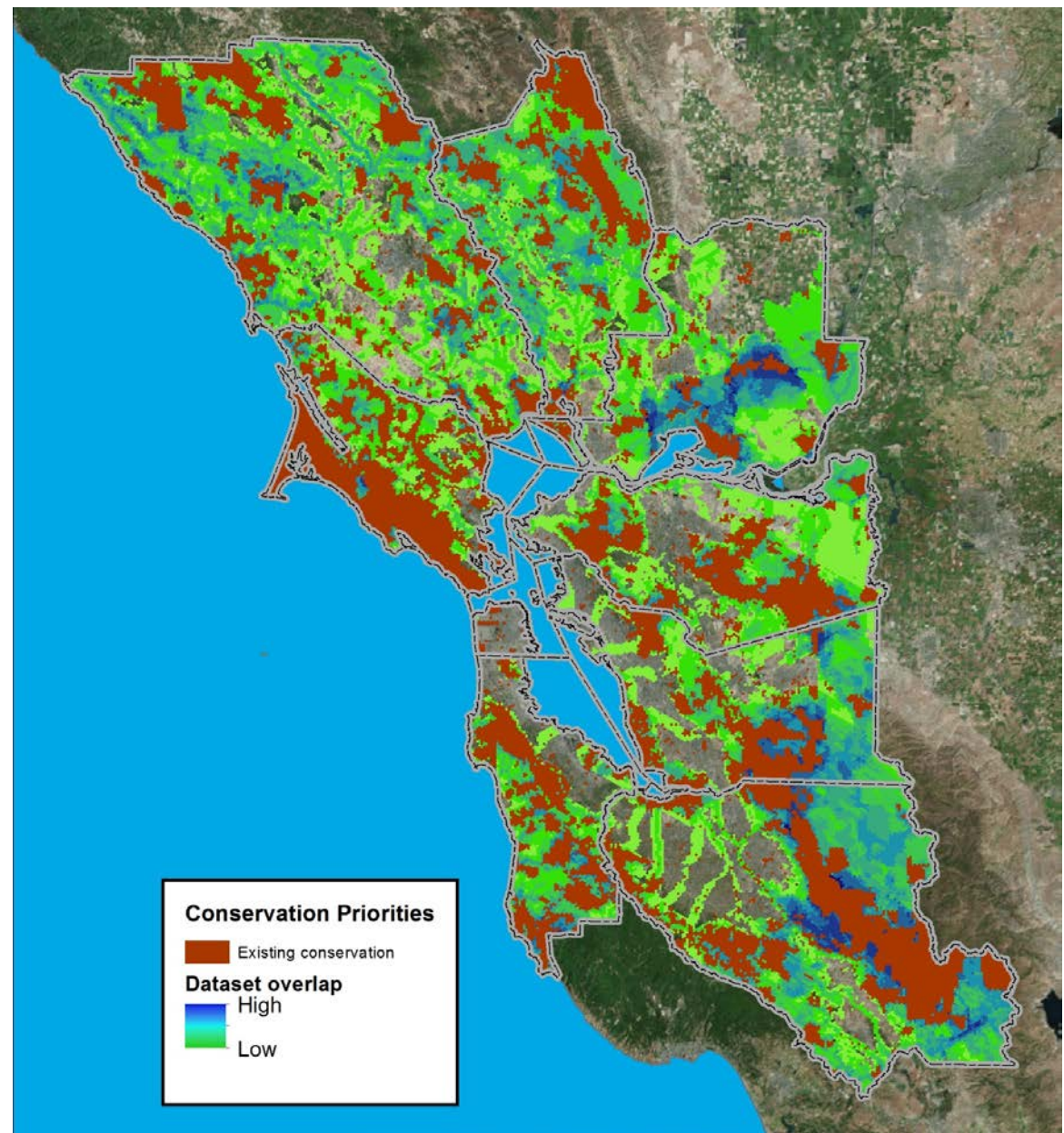


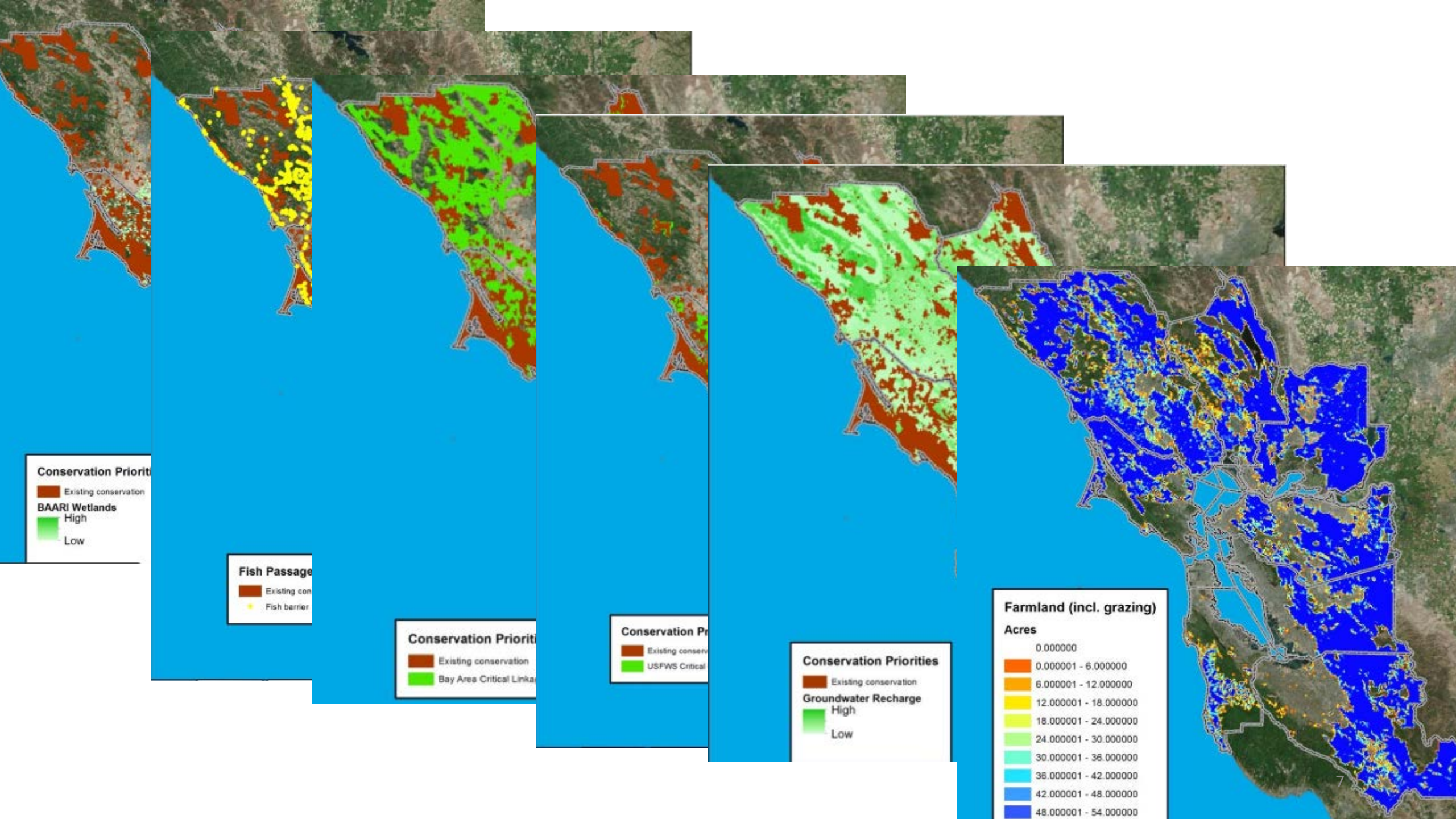
Select Appropriate
Mitigation Sites



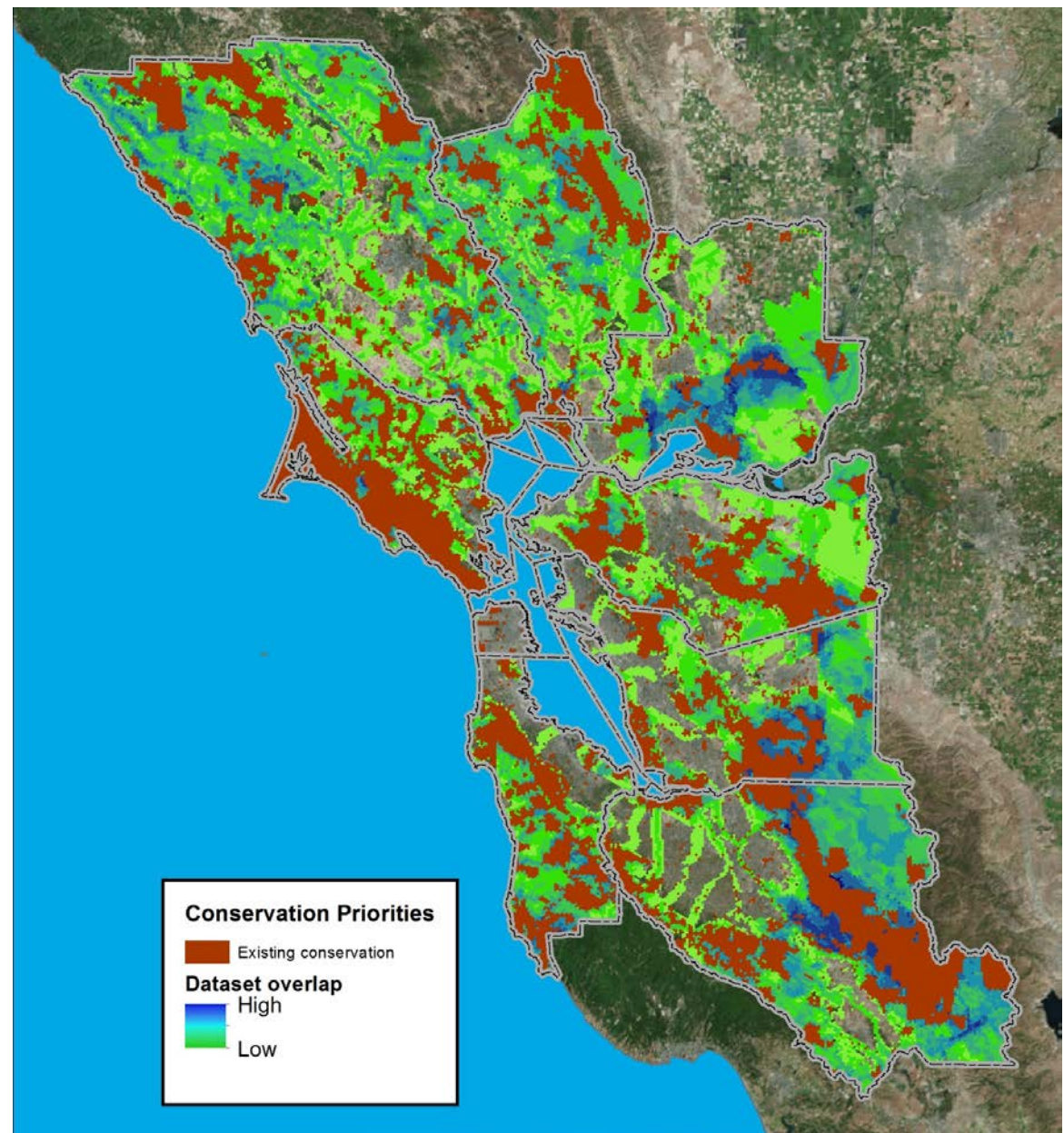
4

Conservation Assessment

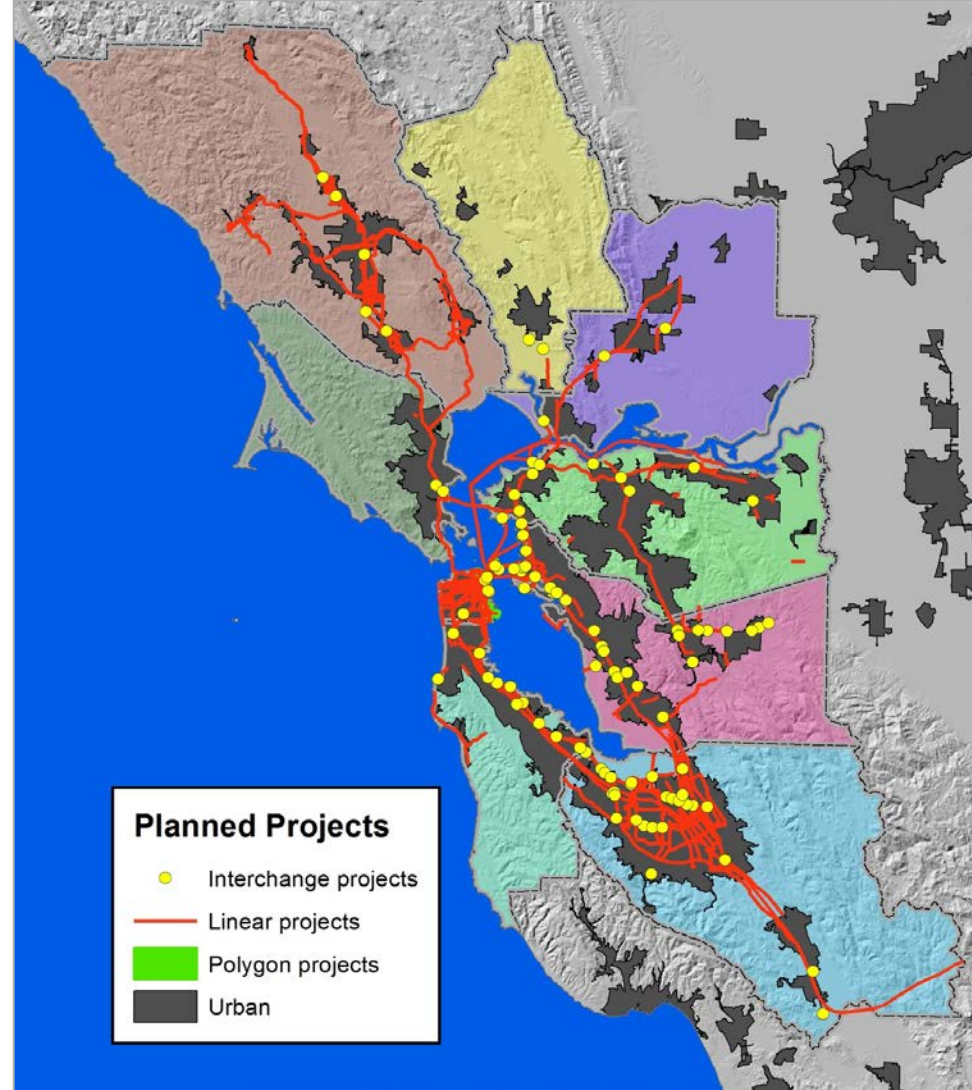


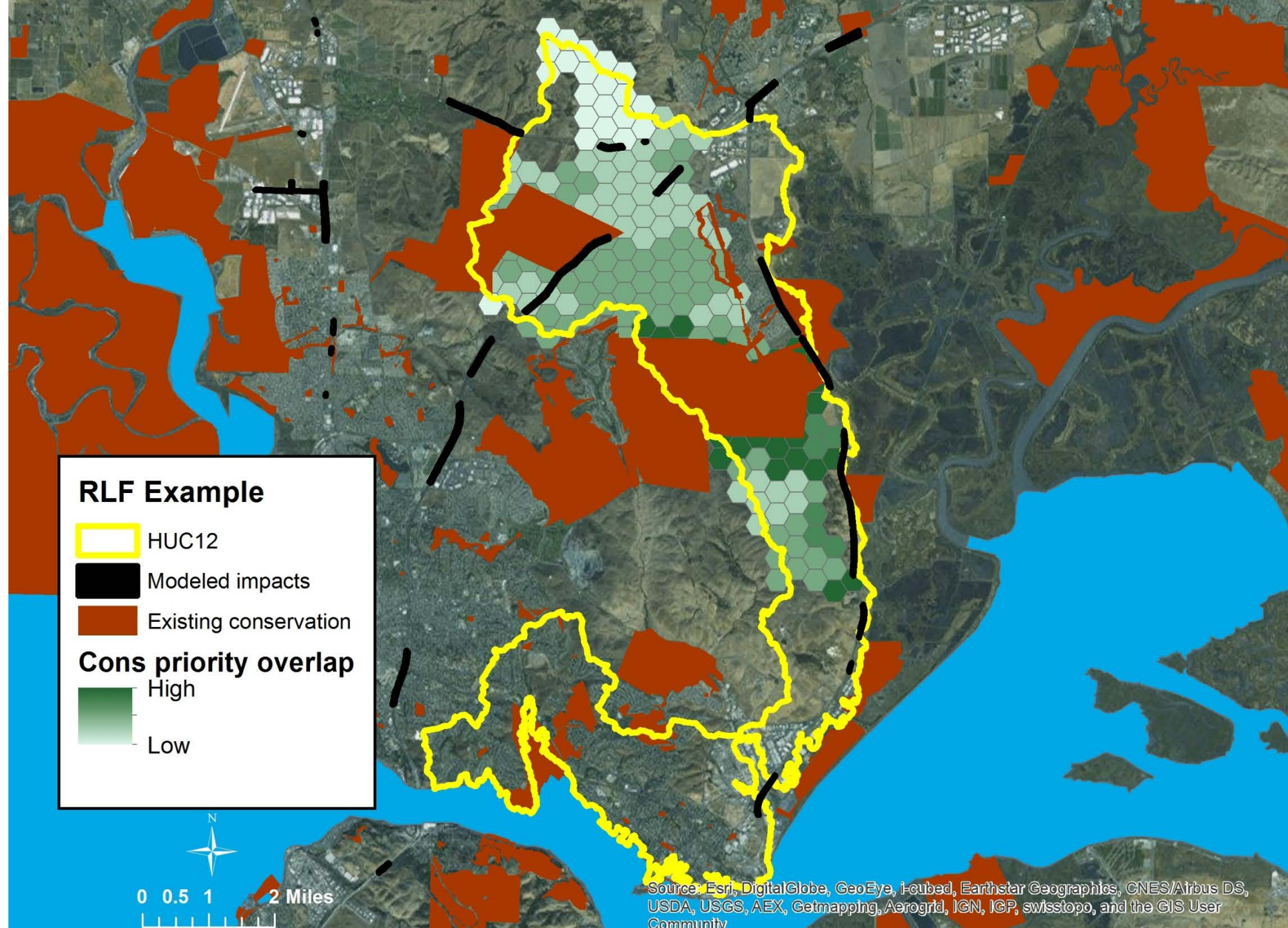


Conservation Assessment



Transportation Assessment



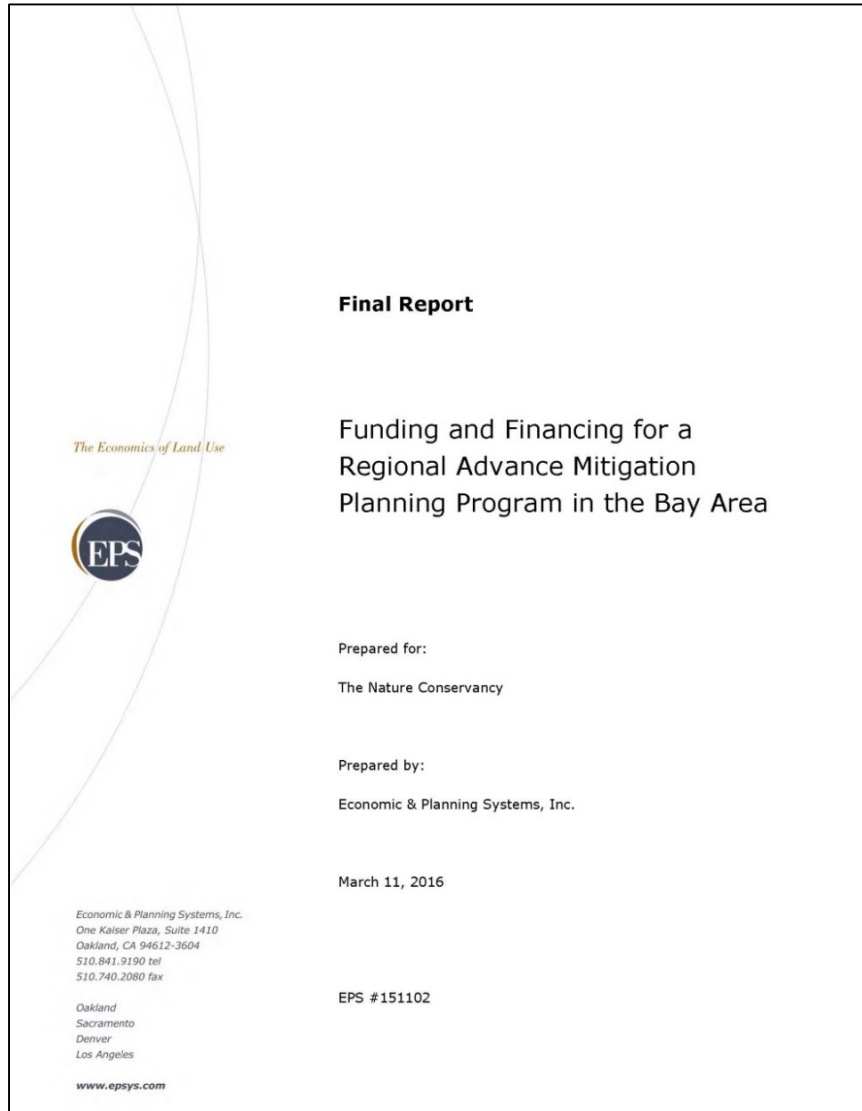


Mitigation Framework

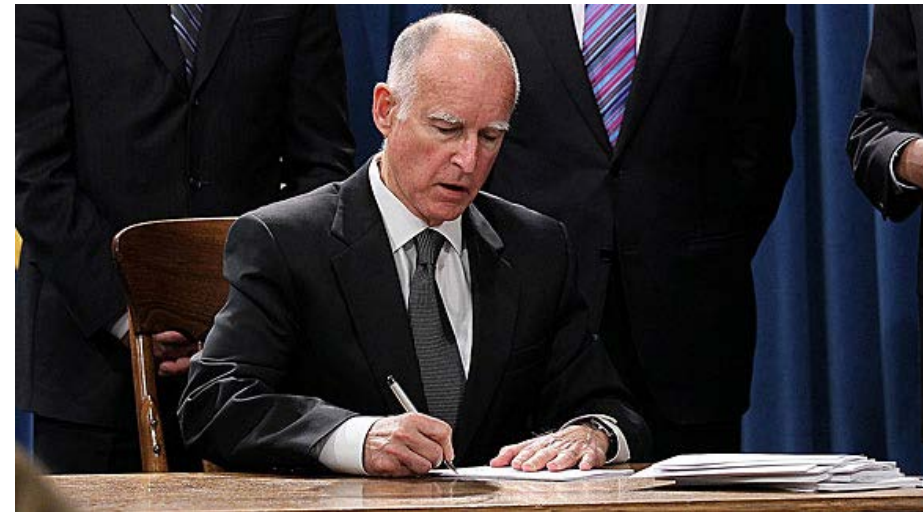


- RAMP is aligned with the agencies' policies to achieve outcomes
- Incorporated agency considerations into RAMP documents –
more to be done through implementation

Funding

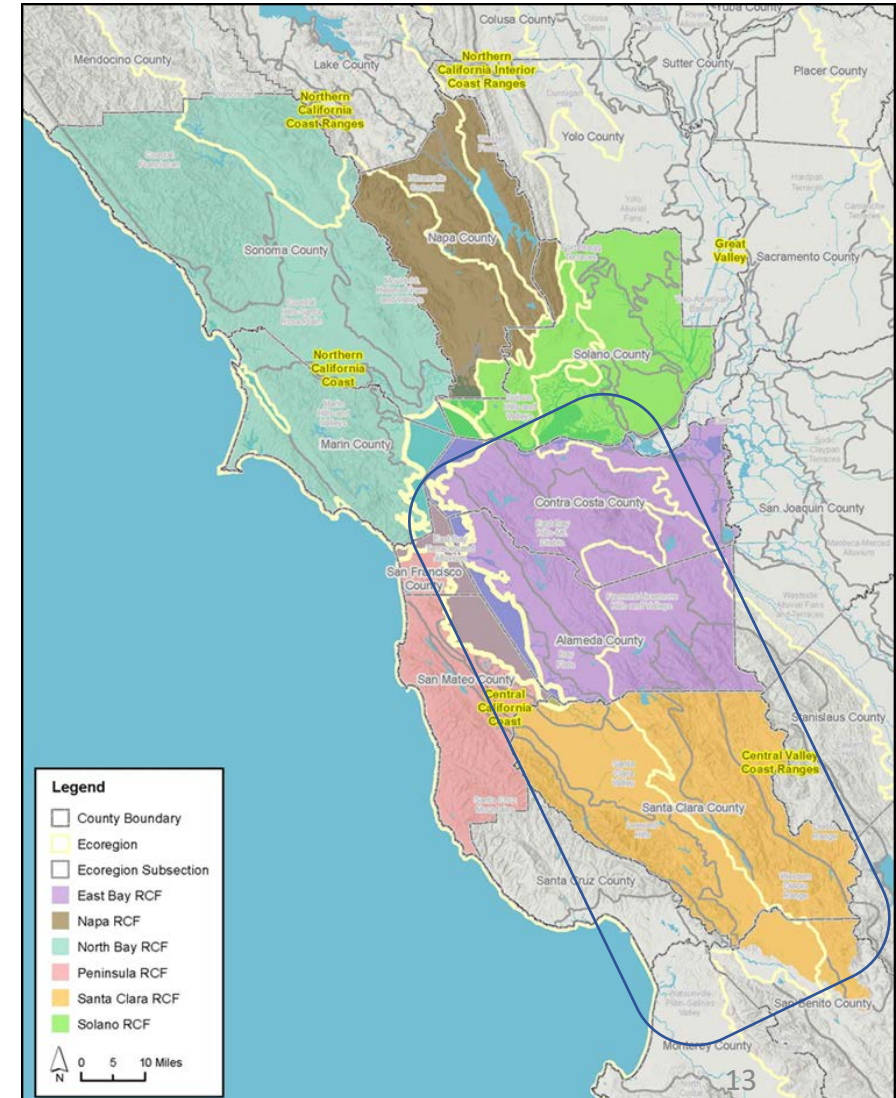


- SBI Signed into Law
- ✓ New Advance Mitigation Program
- ✓ Predictable funding flow



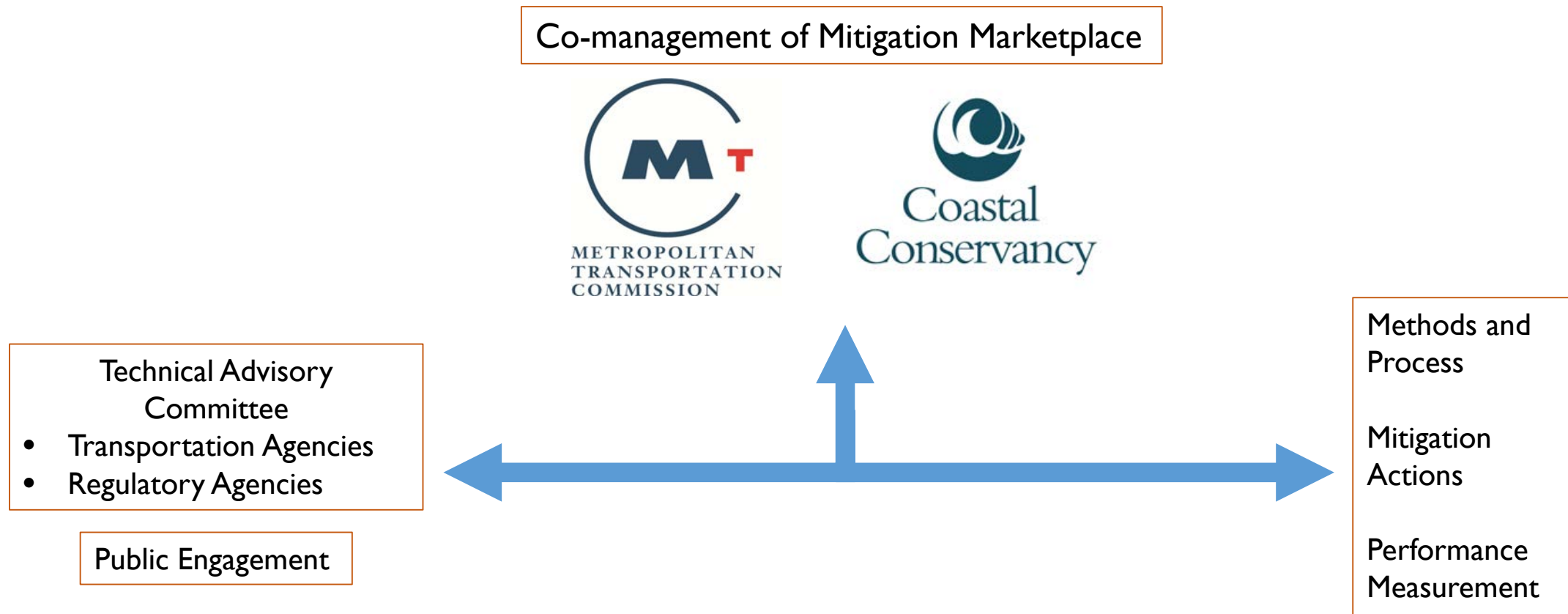
New law: AB 2087

- Encourages *Regional Conservation Investment Strategies*
- Enables Mitigation Credit Agreements
- Bay Area Pilots: Santa Clara and East Bay

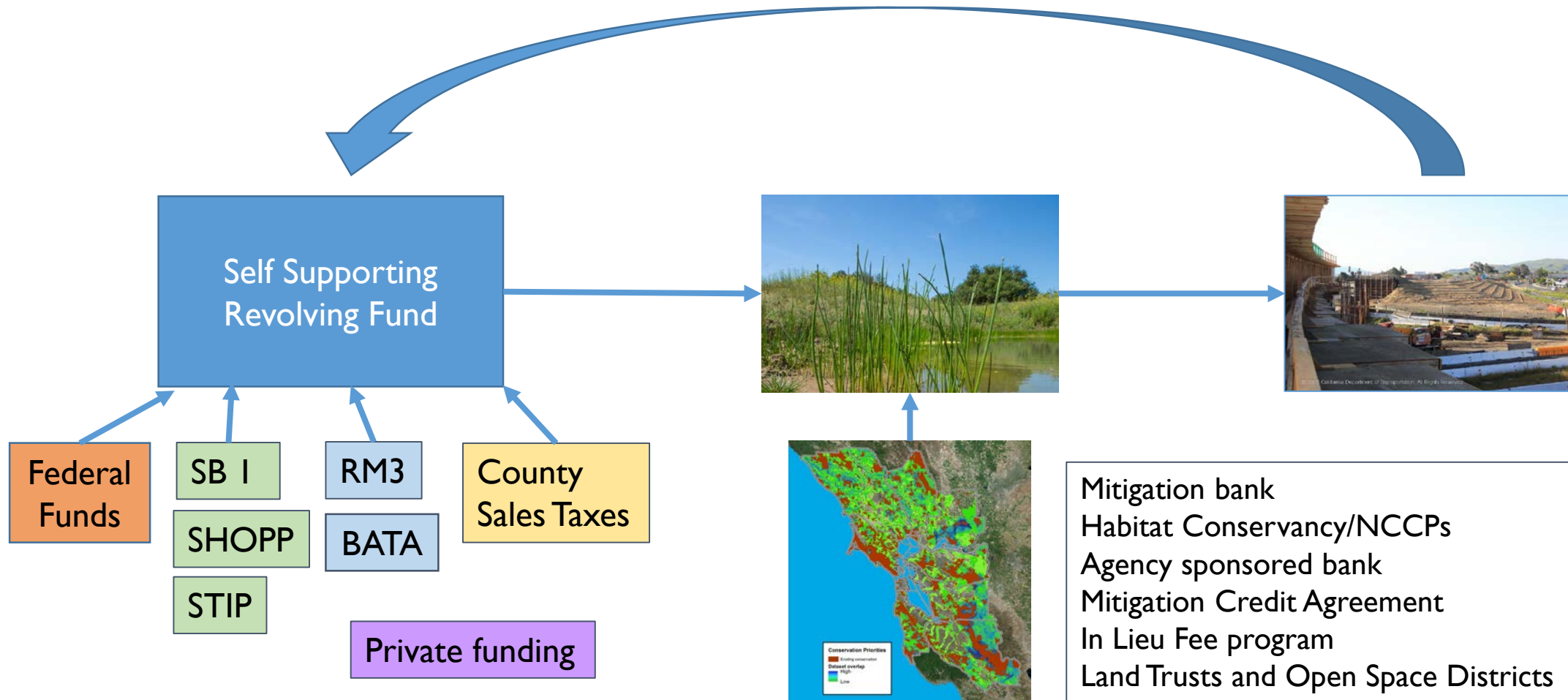


How RAMP would work

Organization and Administration



Funding opportunities and process



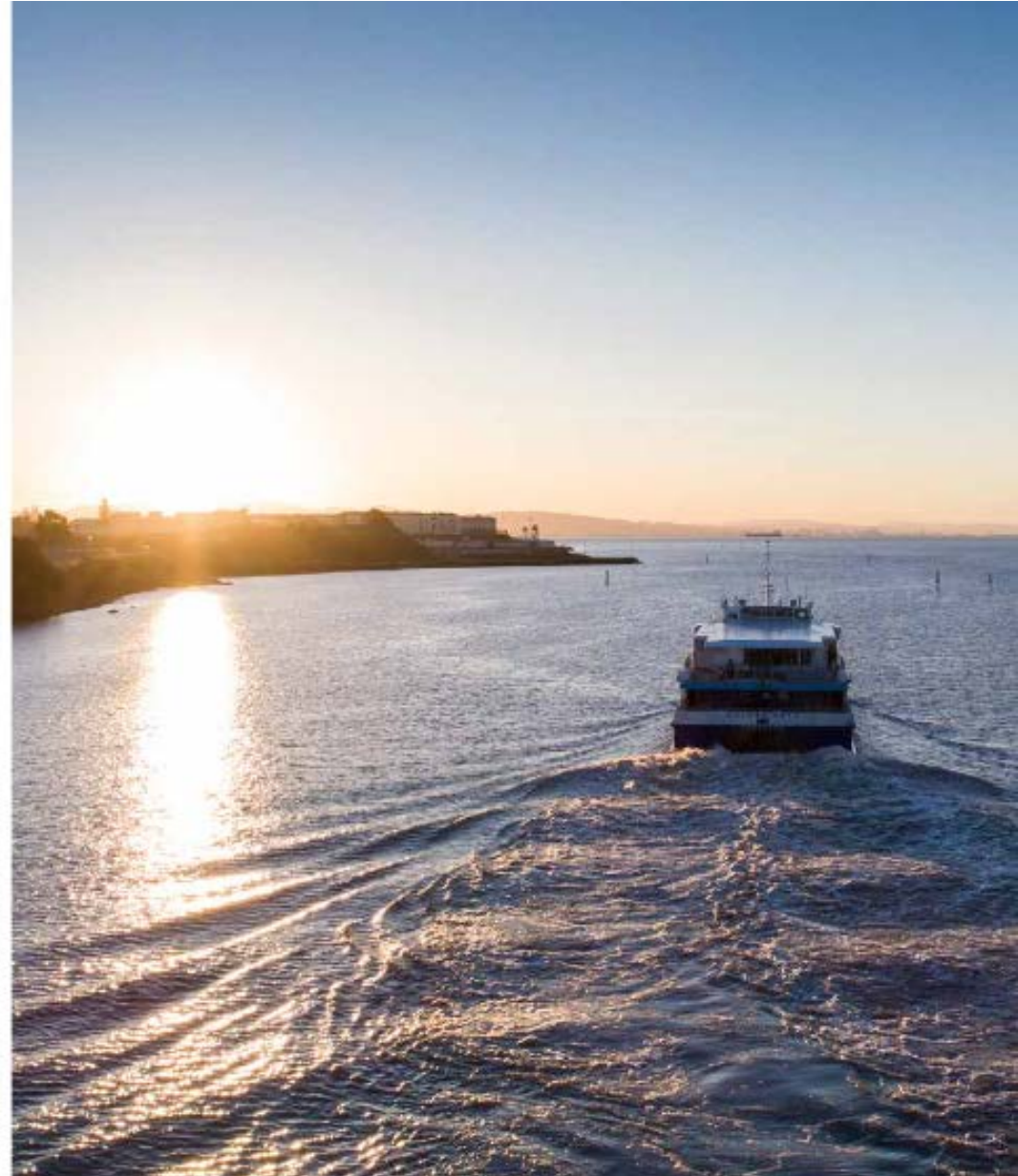
Plan Bay Area 2040 Action Plan - Resilience

This Action Plan makes the following recommendations for Resilience:

Resilience Actions	Partners and Timeframe
Develop a regional governance strategy for climate adaptation projects: Develop an institutional strategy for managing, coordinating, and implementing regional and local projects related to sea level rise.	BARC, MTC/ABAG, BCDC, Caltrans, local jurisdictions 2 - 4 YEARS
Provide stronger policy leadership on resilient housing and infrastructure: Expand guidance on resilient housing policies for earthquake, flooding, and fire, working in coordination with state and federal agencies and focusing on communities with high social vulnerability and exposure to natural hazards. Strengthen infrastructure lifelines to ensure that utilities can provide services under a variety of conditions and future scenarios.	MTC/ABAG, local jurisdictions 1 - 4 YEARS
Create new funding sources for adaptation and resilience: Pursue new funding opportunities, including innovative financing, for retrofits of buildings, retrofits of existing infrastructure, and infrastructure solutions to protect against flooding, earthquakes, and exposure to environmental health risks.	MTC/ABAG, BARC, BCDC 1 - 4 YEARS
Establish and provide a resilience technical services team: Broadly share best practices and grant opportunities for climate adaptation and natural hazard mitigation. Continue to assess vulnerabilities and identify workable solutions through public and private avenues. Integrate resilience into Priority Development Area (PDA) planning.	BARC, MTC/ABAG, BCDC 1-2 YEARS
Expand the region's network of natural infrastructure: Coordinate regional programs to preserve and expand natural features that reduce flood risk, strengthen biodiversity, enhance air quality, and improve access to urban and rural public space. Leverage existing initiatives—including Priority Conservation Areas (PCAs), the Resilient by Design Challenge, San Francisco Estuary Partnership, and Bay Restoration Authority—and partner with special districts and cities.	MTC/ABAG, BCDC, jurisdictions, utilities 1 - 4 YEARS
Establish the Regional Advance Mitigation Program (RAMP): Advance mitigation for infrastructure projects to strengthen regional biological conservation priorities. Work to secure off-site compensatory mitigation lands for multiple infrastructure projects in advance of environmental reviews to improve both project delivery and conservation outcomes.	MTC/ABAG, Caltrans, RAMP coalition 1 - 4 YEARS

TABLE 5.3 Plan Bay Area 2040 "Action Plan" recommendations for resilience.

Source: Metropolitan Transportation Commission, 2014



More work to be done

- Move from plans to action
 - Focus on pilots
 - Regulatory agency alignment
 - Refine transportation assessment
- Fully develop the funding mechanism
 - Sources
 - Financial modeling
 - Accounting and process
- Refine program guidelines

Committee Recommendation/Approval

- **PBA 2040:** Adopt RAMP as a preferred mitigation strategy
- **Pilots and Partners:** Develop RAMP pilots, and engage with State Coastal Conservancy and partners
- **Funding:** Pursue a self-sustaining fund; fund reasonable costs associated with implementation
- **Report:** back to the Planning Committee in 2018

Thank You!



Coastal
Conservancy



S. D. BECHTEL, JR.
FOUNDATION

STEPHEN BECHTEL FUND