



Regional Measure 3: A Potential Framework

MTC Legislation Committee

June 9, 2017

RM3 Potential Framework (\$3 Toll)

PROGRAM CATEGORY	Funding (in millions)
Operating Program	\$60/year
Regional Capital Program	\$2,000
Corridor-Based Capital Program	\$2,000
Reserve	\$200
Grand Total Capital Program	\$4,200

OPERATING PROGRAM

All — Corridor Operating Program

15% of \$3 Toll Revenue

Annual Amount

\$60 million

ALL CORRIDORS

- Transbay Terminal
- Ferries
- Clipper 2.0
- Regional Express Bus

CAPITAL PROJECTS

Regional Programs

Total Amount
\$2,000 million
*(50% of
Capital Funds)*

- **Bridge Rehabilitation**
(SFOBB & Richmond-San Rafael deck replacement, San Mateo-Hayward and Dumbarton deck overlays, paint Carquinez, miscellaneous projects on Richmond-San Rafael, SFOBB and San Mateo Hayward)
- **BART Expansion Cars**
(all BART-reliant counties)
- **Corridor Express Lanes**
(San Mateo 101, Alameda/Contra Costa I-80, Alameda I-880, Contra Costa I-680, I-680/80 connectors, SR 84, SR 92)
- **Freight**
(I-580, I-880, I-80, Port of Oakland)
- **Bay Trail / Safe Routes to Transit**
(all bridges corridors eligible)
- **Ferries**
(New vessels to add frequency to existing routes and expansion to Mission Bay, Alameda Point-Seaplane Lagoon, Berkeley, San Francisco)

CAPITAL PROJECTS

Regional Programs

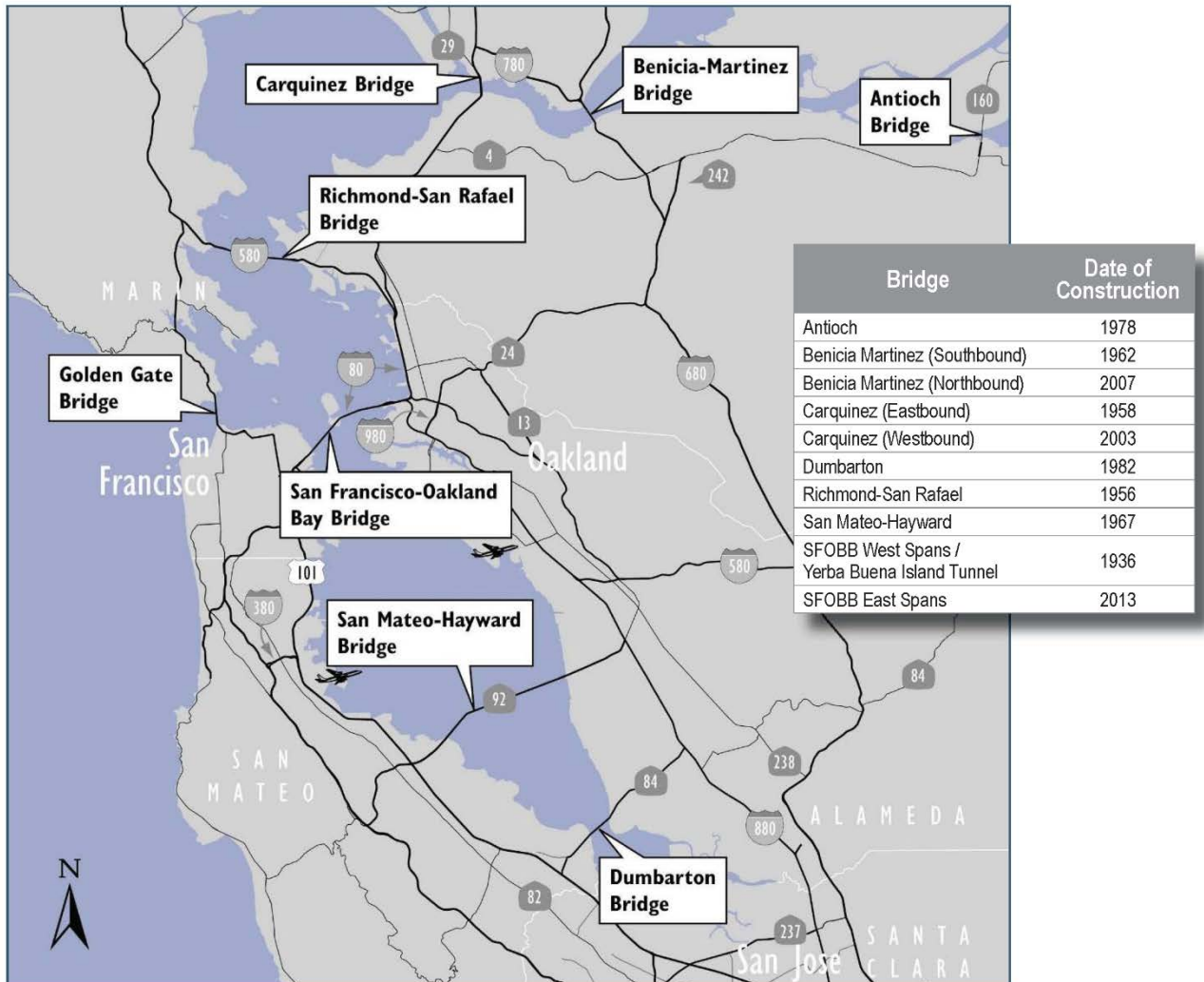
50% of RM3 Capital Funds

Regional Program Categories

- **Bridge Rehabilitation**
- **BART Expansion Cars**
- **Corridor Express Lanes**
- **Freight**
- **Bay Trail/Safe Routes to Transit**
- **Ferries**

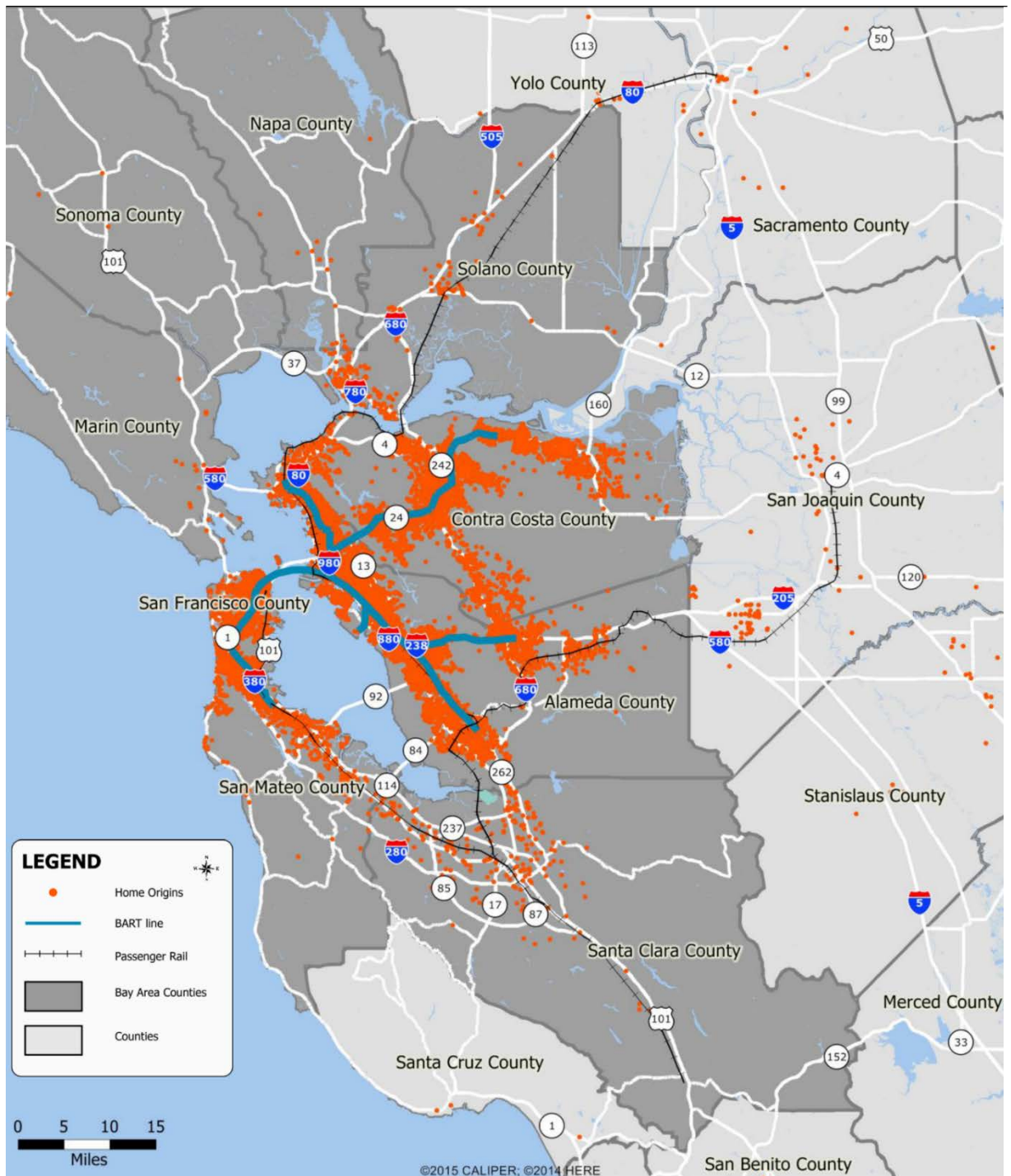
Bridge Rehabilitation

BATA annually adopts a revised 10-Year Toll Bridge Rehabilitation Plan for the state-owned bridges. BATA currently provides approximately \$60 million a year to fund the upkeep and rehabilitation of the toll bridges, toll facilities, and tolling equipment. However, as the bridges age, additional funds are needed to keep all structures and systems in a state of good repair.



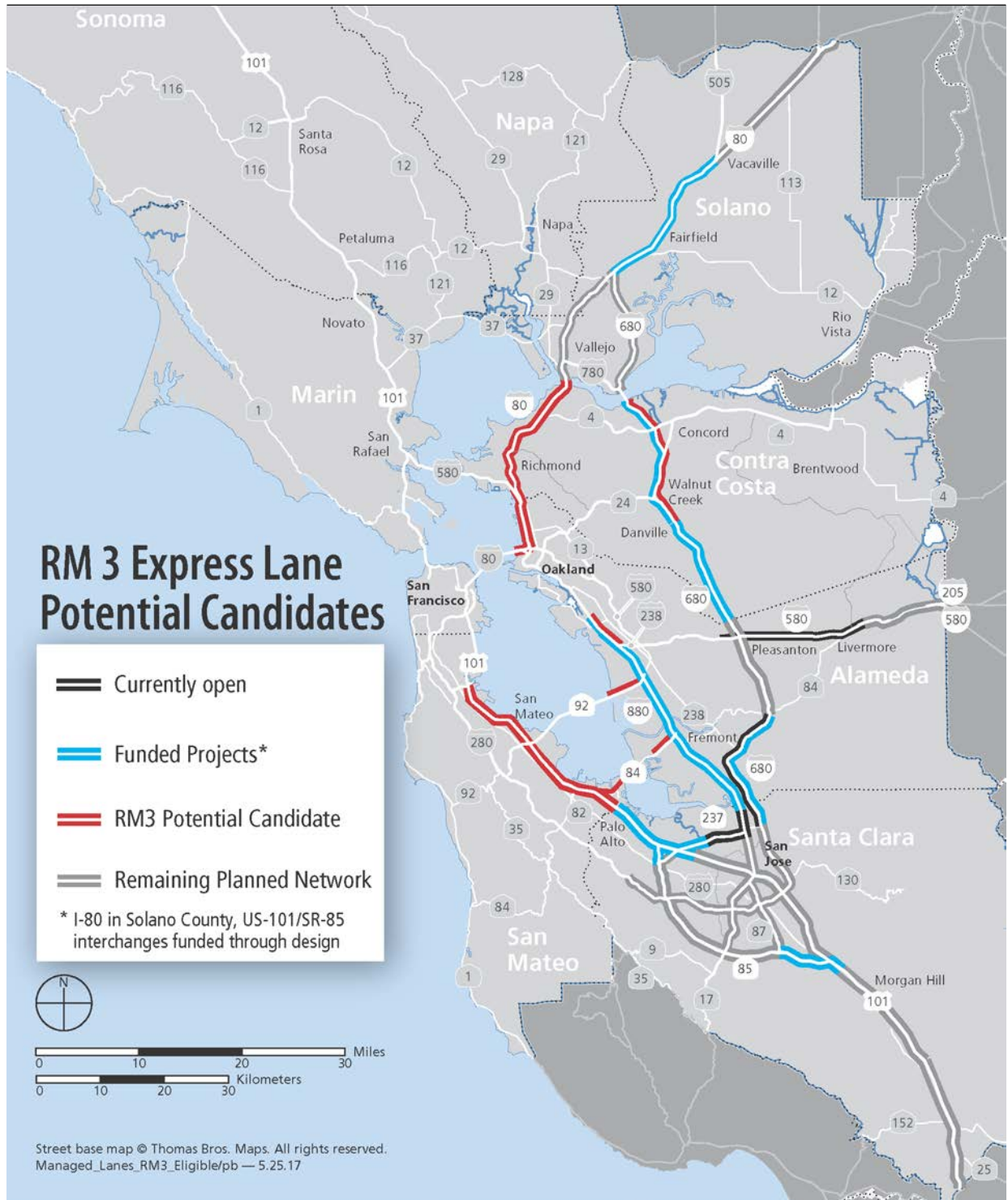
BART Expansion Cars

Regional Overview: Home Locations of BART Riders

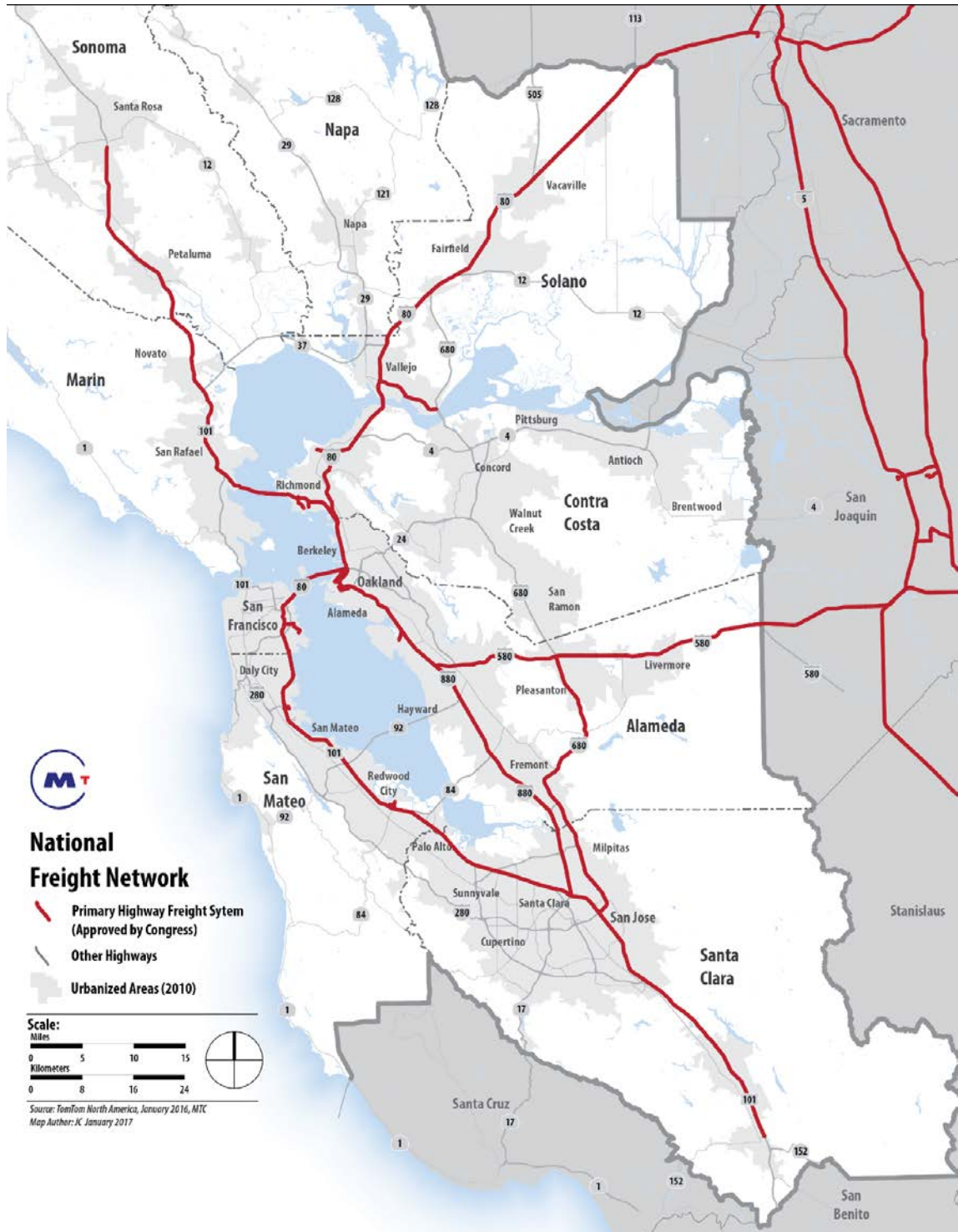


2015 BART Station Profile Study (weekday). Data shown on this map are not weighted.

Corridor Express Lanes



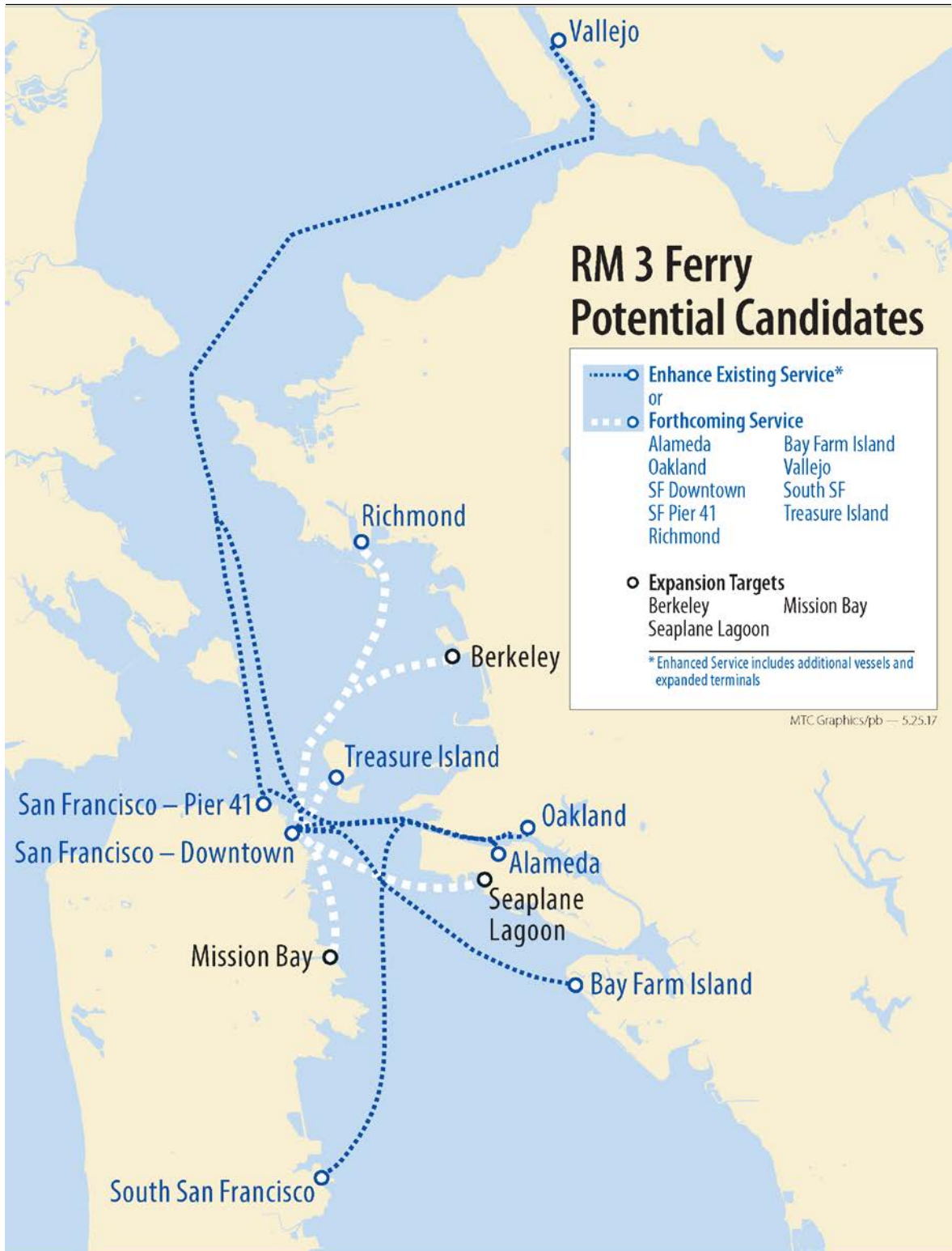
Freight Corridors (I-580, I-880, I-80, Port of Oakland)



Bay Trail / Safe Routes to Transit



Ferries





CAPITAL PROJECTS Corridor-Specific Projects & Programs	Total Amount \$2,000 million <i>(50% of Capital Funds)</i>
CENTRAL (San Francisco-Oakland Bay Bridge)	
<ul style="list-style-type: none">New Transbay Tube DesignCaltrain Downtown ExtensionMuni Expansion LRVsCore Capacity Projects (SF/Oakland)AC Transit - Rapid Bus Improvements	
CORRIDOR REVENUE GENERATED 32%	
SOUTH (San Mateo-Hayward, Dumbarton Bridges)	
<ul style="list-style-type: none">Tri-Valley Transit Access ImprovementsEastridge to BART Regional ConnectorSan Jose Diridon StationDumbarton Rail/ACE ConnectionBART to San Jose	
CORRIDOR REVENUE GENERATED 22%	



CAPITAL PROJECTS (continued)

Corridor-Specific Capital Projects & Programs

NORTH (Richmond-San Rafael, Benicia-Martinez, Carquinez, Antioch Bridges)

- **Contra Costa 680 Express Bus/Transit Capacity**
- **Marin-Sonoma Narrows**
- **Solano 80/680 Interchange**
- **Highway 37**
- **San Rafael Transit Center/SMART**
- **Marin 101/580 Interchange**
- **North Bay Transit Improvements**
(Marin, Sonoma, Solano, Napa)

CORRIDOR REVENUE GENERATED 46%

(\$ in millions)

Regional Capital Projects Total	\$2,000
Corridor Specific Capital Projects Total	\$2,000
Capital Projects Reserve	200
All Capital Projects TOTAL	4,200

Core Capacity Projects (S.F./Oakland)



- 75% of the peak Bay Bridge commute trips occur on transit, but transit is at capacity.
- **Examples of Core Capacity projects:**
BART platform enhancements to improve capacity, transbay bus fleet and service expansion, feeder bus service to ferries, new park-and-ride lots for transbay bus service, better bus access to bridge and HOV lanes.

Diridon Station/BART to Silicon Valley



- Diridon Station will be the South Bay hub for the region's existing and future rail systems, improving mobility for commuters traveling between the region's three largest cities: San Francisco, San Jose, and Oakland.
- BART to Silicon Valley scored the highest of any transit project in the Draft Plan Bay Area 2040 benefit-cost analysis.

Solano Interstate 80-680 Interchange



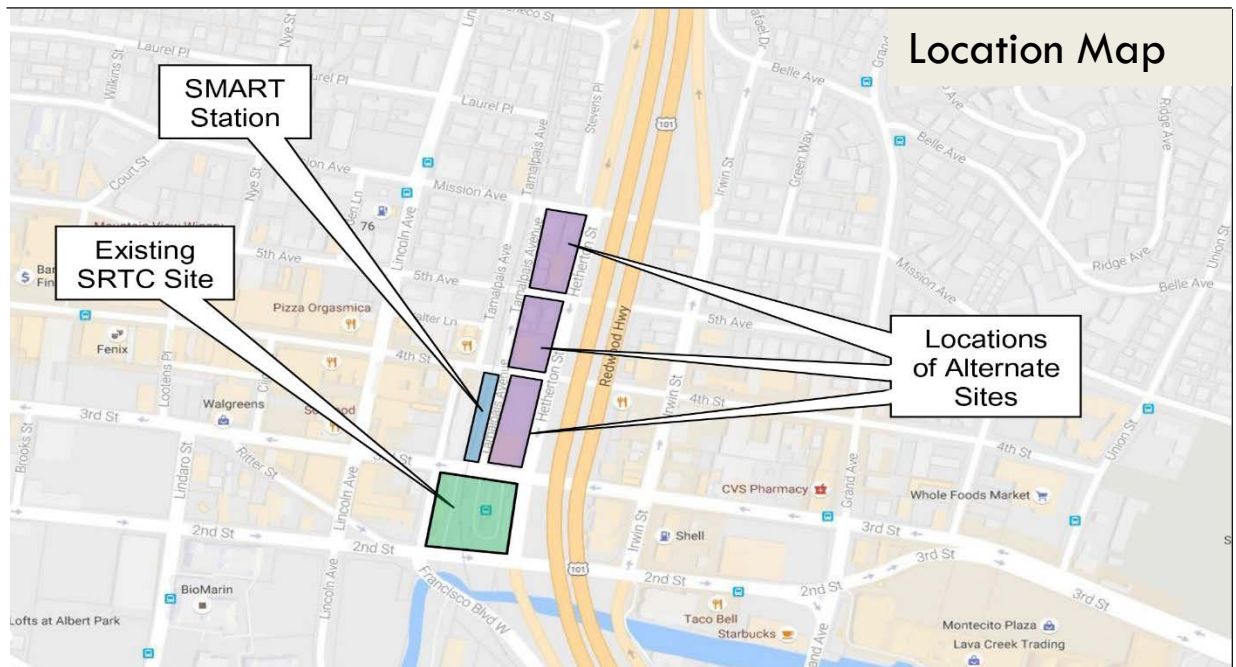
- The Solano Transportation Authority-led project will deliver major improvements to the Interstate 80, Interstate 680 and State Route 12 interchanges.
- Phase 1 was funded by Regional Measure 2.
- The project will improve travel time reliability, provide congestion relief, and enhance safety by streamlining connections between these routes, which serve as key bridge corridors.

Marin-Sonoma Narrows

- This Highway 101 segment is a key route for North Bay commuters and businesses.
- Since 2010, congestion along this segment of Highway 101 has more than doubled.
- New HOV lanes will improve travel times and make carpooling and transit more attractive travel options.



San Rafael Transit Center



- The existing San Rafael Transit Center needs a new location due to conflict with SMART Extension to Larkspur.
- A new station will help facilitate growth in transit riders in the North Bay, allowing transfers to SMART, bus, and ferry to destinations in the North Bay, East Bay and San Francisco.

Outstanding Issues/Policy Provisions

- Performance standards
- Status of New Starts
- Linkage to Housing
- Independent RM 3 oversight committee
- FasTrak Discount option
- Congestion Pricing
- All-Electronic Tolling Option

Next Steps for RM 3

- Continue dialogue with the Bay Area legislative delegation regarding the expenditure plan and any policy provisions.
- Senate Bill 595 (Beall) will be heard in the Assembly Transportation Committee by **July 14**.
- The next committee deadline is the Assembly Appropriations Committee, where it must be passed by **September 1**; the last day for both houses to pass bills is **September 15**. The Governor has until **October 15** to sign or veto bills.
- If bill is enacted, Commission will need to determine when to place measure on the ballot.