



METROPOLITAN
TRANSPORTATION
COMMISSION

Agenda Item 4b
Bay Area Metro Center
375 Beale Street
San Francisco, CA 94105
TEL 415.778.6700
WEB www.mtc.ca.gov

Memorandum

TO: Operations Committee

DATE: May 6, 2016

FR: Executive Director

W.I.: 1231

RE: Third Quarter MTC SAFE Financial Statements March 2016

Please find attached for Committee receipt the MTC SAFE financial statements for the third quarter ended March 31, 2016.

SAFE Program

Vehicle registration fees through the third quarter of \$4.8 million are slightly higher than the budgeted amount, due to an increase of registered vehicles.


FSP Program

Total program expenditures through the third quarter are \$5.6 million and 86% of the expenses are for tow related expenses.

Capital Program

The total life-to-date budget for the Capital Programs is \$24 million. As of the end of the third quarter of FY 2015-16, life-to-date expenses for those programs plus encumbrances total \$16 million.

If you have any questions about this report, please contact Brian Mayhew at (510) 817-5730.



Steve Heminger

SH: es

J:\COMMITTEE\Operations\2016 Operations Comm Packet\05_OPS_May 2016\4b_3rd Qtr SAFE Financial Statements March 2016-cover memo.docx

MTC Service Authority for Freeways and Expressways
Operating Budget
As of March 2016

	1	2	3	4	5	6
	FY 2015-16 Budget	Actual YTD	Budget Balance	% of Budget	% of Budget year Expired	Encumbrances
<u>SAFE Program</u>						
REVENUE:						
Vehicle Registration Fees	6,200,000	4,764,371	1,435,629	76.8%	75.0%	
Surface Transportation Program (STP)	150,000	150,000	-	100.0%	75.0%	
BATA	300,000	300,000	-	100.0%	75.0%	
Interest Income	6,000	3,112	2,888	51.9%	75.0%	
Other Revenue	-	7,647	(7,647)	0.0%	75.0%	
Total Revenue	6,656,000	5,225,129	1,430,871	78.5%	75.0%	
EXPENSE:						
Salaries and Benefits	210,500	171,535	38,965	81.5%	75.0%	22,732
General Operations	484,900	391,712	93,188	80.8%	75.0%	8,580
Consultant Services	397,500	143,486	254,014	36.1%	75.0%	223,628
Callbox Operating Expense	670,000	313,819	356,181	46.8%	75.0%	334,890
Total Expense	1,762,900	1,020,552	742,348	57.9%	75.0%	589,830
OPERATING TRANSFERS In (Out):						
MTC	(2,092,900)	(657,163)	(1,435,737)	31.4%	75.0%	-
FSP	(2,502,100)	(1,409,138)	(1,092,962)	56.3%	75.0%	-
Operating Reserve	(298,100)	(2,138,276)	1,840,176	717.3%	75.0%	-
Total Transfers	(4,893,100)	(4,204,577)	(688,523)	85.9%	75.0%	-
NET Operating Revenue (Exp)	-	-	-			

	1	2	3	4	5	6
	FY 2015-16 Budget	Actual YTD	Budget Balance	% of Budget (col 2/1)	% of Budget year Expired	Encumbrances
<u>FSP Program</u>						
REVENUE:						
Local Assistance Program (LAP)	5,800,000	3,098,060	2,701,940	53.4%	75.0%	
Surface Transportation Program (STP)	2,065,000	1,095,193	969,807	53.0%	75.0%	
Traffic Mitigation Program	100,000	28,924	71,076	28.9%	75.0%	
Total Revenue	7,965,000	4,222,177	3,742,823	53.0%	75.0%	
EXPENSE:						
Salaries and Benefits	697,400	458,724	238,676	65.8%	75.0%	-
General Operations	442,700	273,447	169,253	61.8%	75.0%	524
Consultant Services	335,000	56,036	278,964	16.7%	75.0%	12,644
Freeway Serv Operating Expense	8,992,000	4,843,108	4,148,892	53.9%	75.0%	3,961,812
Total Expense	10,467,100	5,631,315	4,835,785	53.8%	75.0%	3,974,981
TRANSFERS In (Out):						
Transfers from Callbox	2,502,100	1,409,138	1,092,962	56.3%	75.0%	-
Total Transfers	2,502,100	1,409,138	1,092,962	56.3%	75.0%	-
Ending Balance	-	-	-			

MTC Service Authority for Freeways and Expressways
Capital Budget
As of March 2016

	1	2	3	4	5
<u>Capital Program</u>	LTD Budget			Project Balance	Actual LTD
	Thru FY 2015-16	Actual LTD	Encumbrance	LTD	plus Encumb
<u>Active Programs</u>					
REVENUE:					
1. CMAQ	6,810,390	6,804,641	-	5,749	-
2. STP	1,556,260	721,378	-	834,882	
Total Revenue	8,385,489	7,526,019	-	859,470	
EXPENSE:					
6301 Bridge Callboxes	3,771,000	3,239,412	77,747	453,841	453,841
6303- Bay Area Camera Upgrade	9,464,583	8,597,683	743,760	123,140	123,140
6306- Data - AVL telecom system update	3,342,000	1,953,009	359,614	1,029,377	1,029,377
6314-Callbox Site Mitigation	1,650,000	974,625	76,359	599,016	599,016
6318-Connected Vehicles & Telematic	2,500,000	-	-	2,500,000	2,500,000
6319-Active OPS Mgt Program	3,200,000	-	-	3,200,000	3,200,000
Total Expense	23,927,583	14,764,729	1,257,480	7,905,374	7,905,374
TRANSFERS In/(Out):					
BATA	3,711,000	3,711,000	-	-	3,711,000
SAFE	11,831,094	5,633,830	-	6,197,264	5,633,830
Total Transfer In/(Out)	15,542,094	9,344,830	-	6,197,264	9,344,830
Ending Balance	-	2,106,120	-	-	1,439,456

PURCHASE ORDERS EXECUTED BY EXECUTIVE DIRECTOR

\$2,500 - \$200,000		Jan-Mar'16
AT&T		\$15,000
	<i>Wireless data service</i>	
Crystal Communication		\$3,000
	<i>Radio supplies - Freeway Safety Patrol</i>	
Abacus Product Inc		\$2,995
	<i>Supplies - Freeway Safety Patrol</i>	
Symmetrical Designs		\$2,940
	<i>Website maintenance</i>	

CONTRACTS EXECUTED BY EXECUTIVE DIRECTOR
\$200,000 and Under

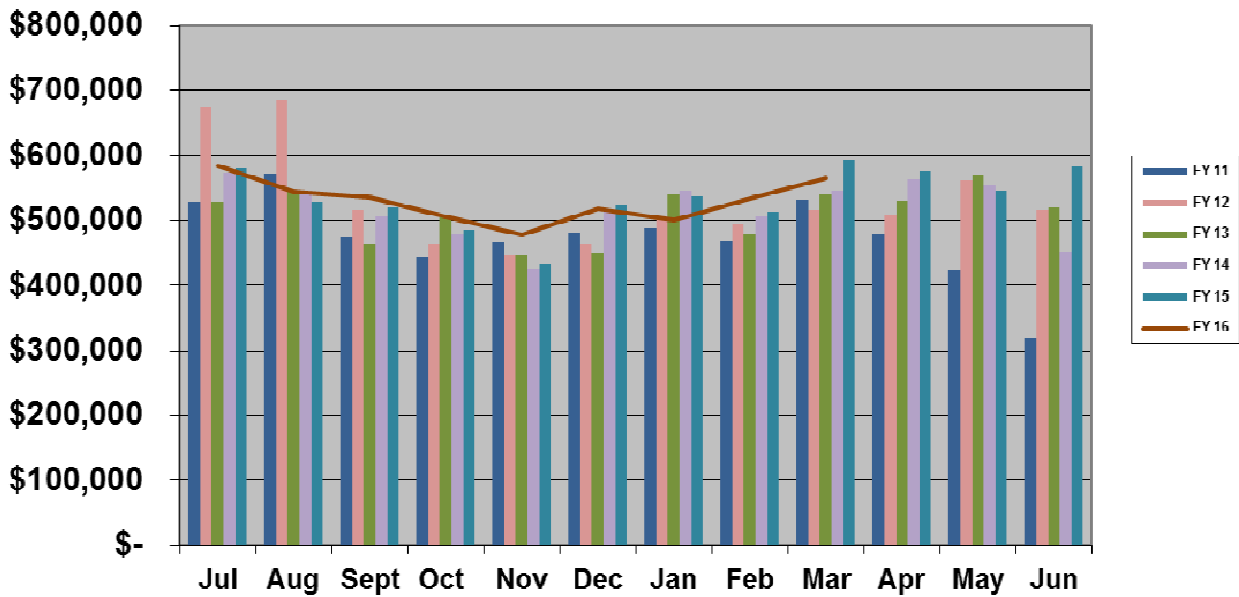
Jan-Mar'16

OneWorld Commuication

\$150,000

Raido air coverrage service for SAFE

Total DMV Revenue Total All Counties



Total YTD All Counties DMV Revenue (\$000)

