

An aerial photograph of the San Francisco Bay Area, showing the city skyline, the Port of San Francisco, and the water. The Port of San Francisco is a large, rectangular pier extending into the water, with several buildings and a clock tower. The water is dark green, and there are several boats and ships in the harbor. The city skyline is visible in the background, with many tall buildings and a mix of urban and green spaces.

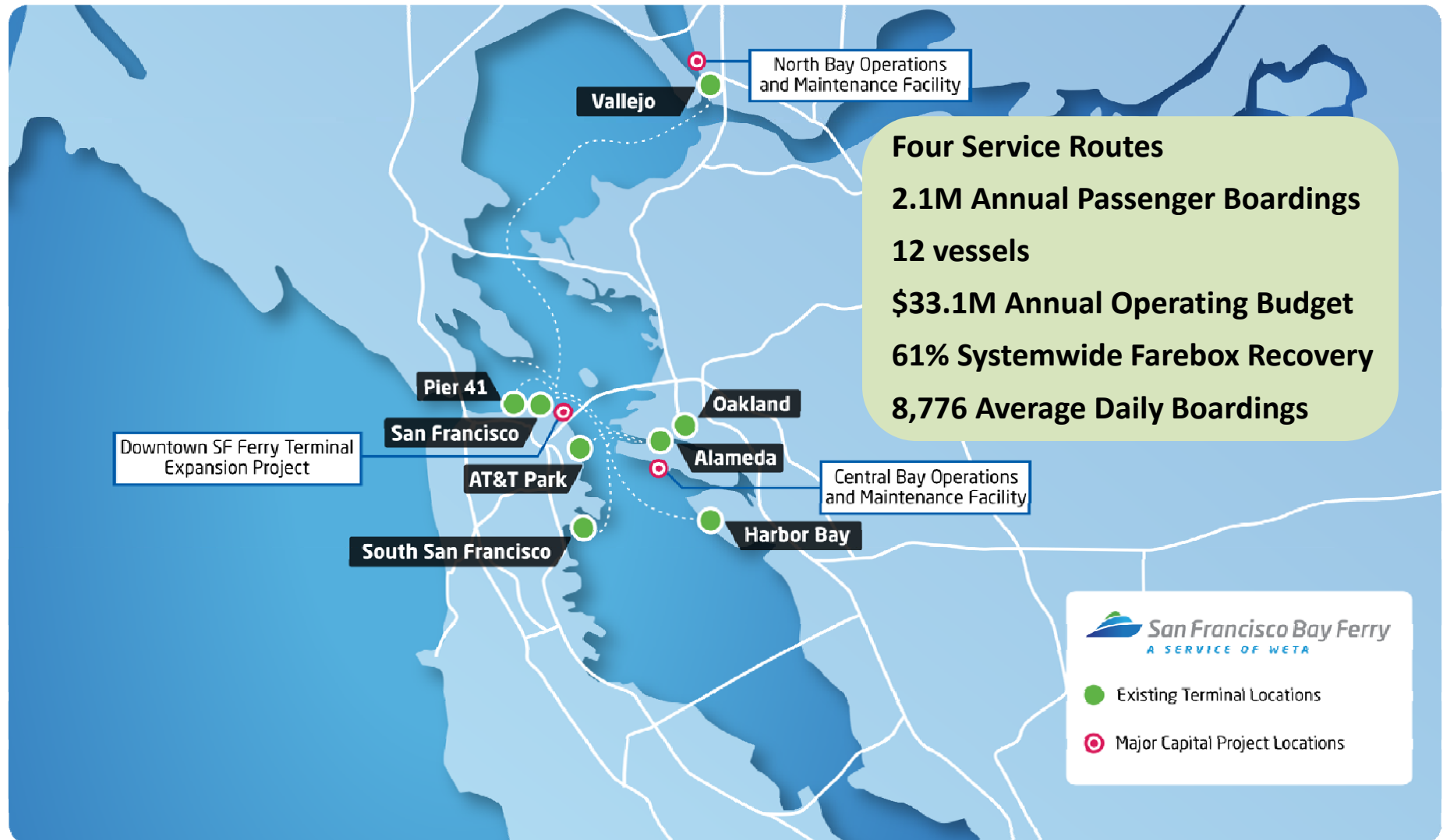
San Francisco Bay Area

Water Emergency Transportation Authority

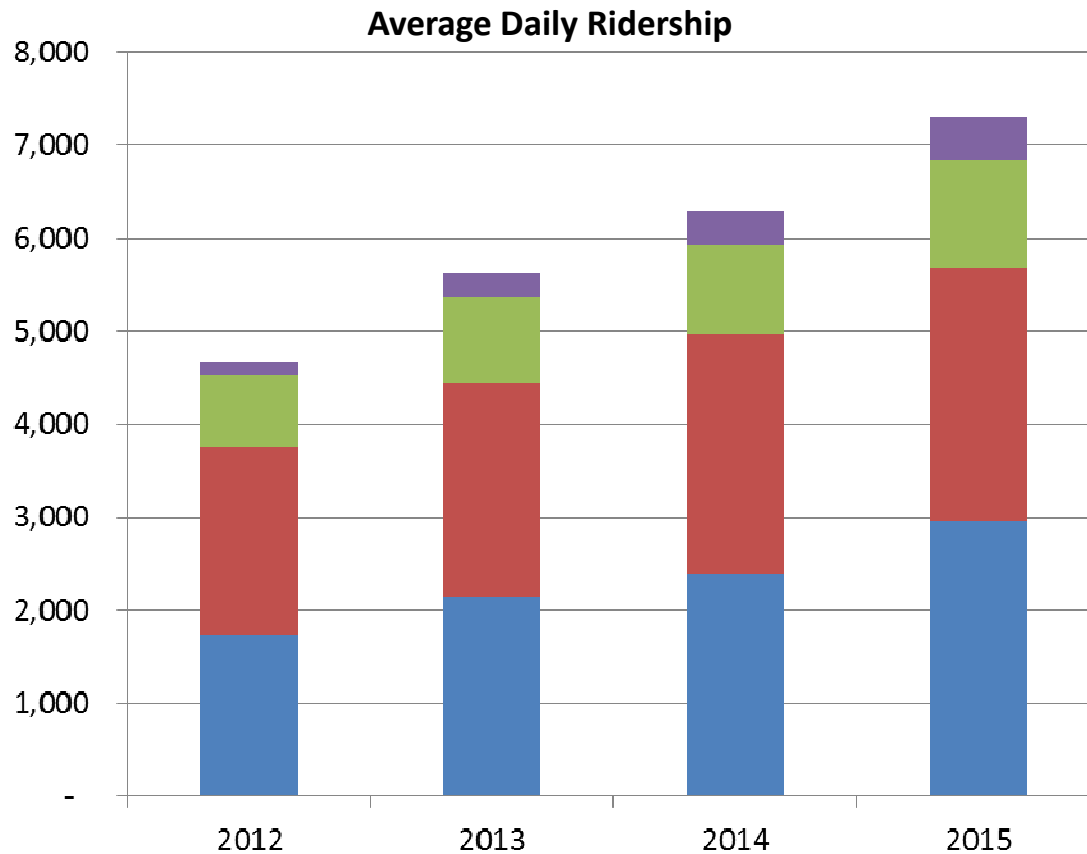
Transbay Capacity Presentation
September 2015

WETA Terminals

WATER EMERGENCY
TRANSPORTATION AUTHORITY

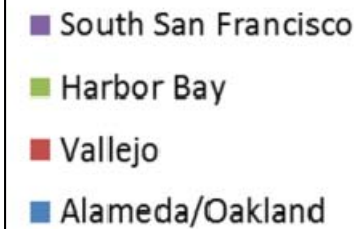


WATER EMERGENCY TRANSPORTATION AUTHORITY



Ridership Growth

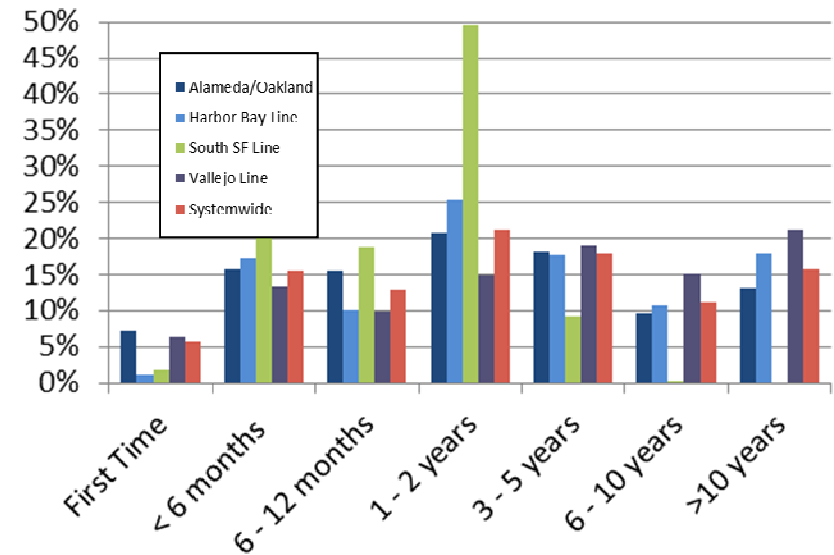
	Last Year	3-Year
Alameda/Oakland	23%	71%
Vallejo	7%	35%
Harbor Bay	20%	49%
South San Francisco	28%	232%
WETA System	16%	56%



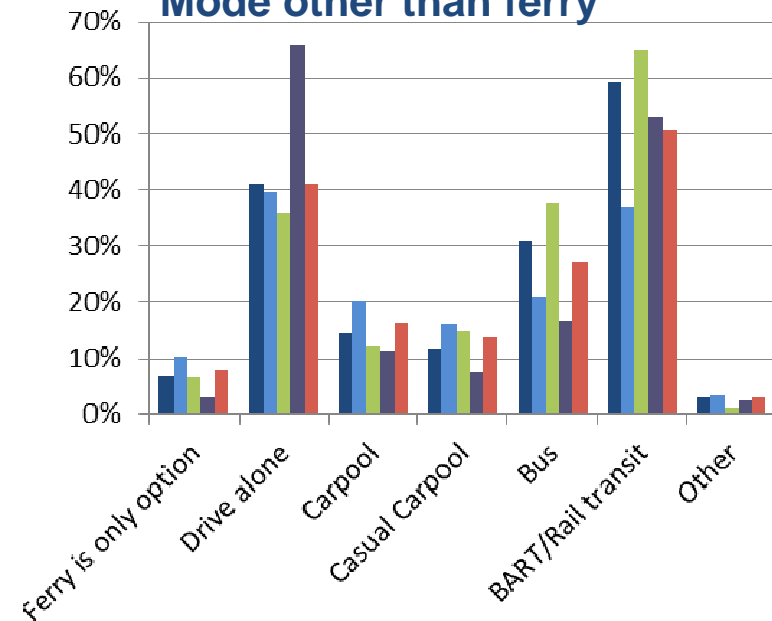
WETA Riders, 2014 Onboard Survey

- 35% of ferry riders have been riding regularly for less than a year
- 41% of ferry riders would drive alone if the ferry were not available
 - 50% would have used BART

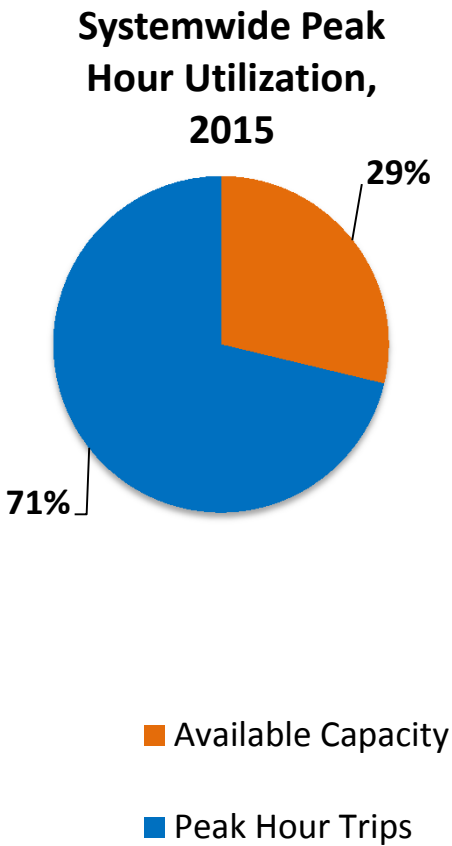
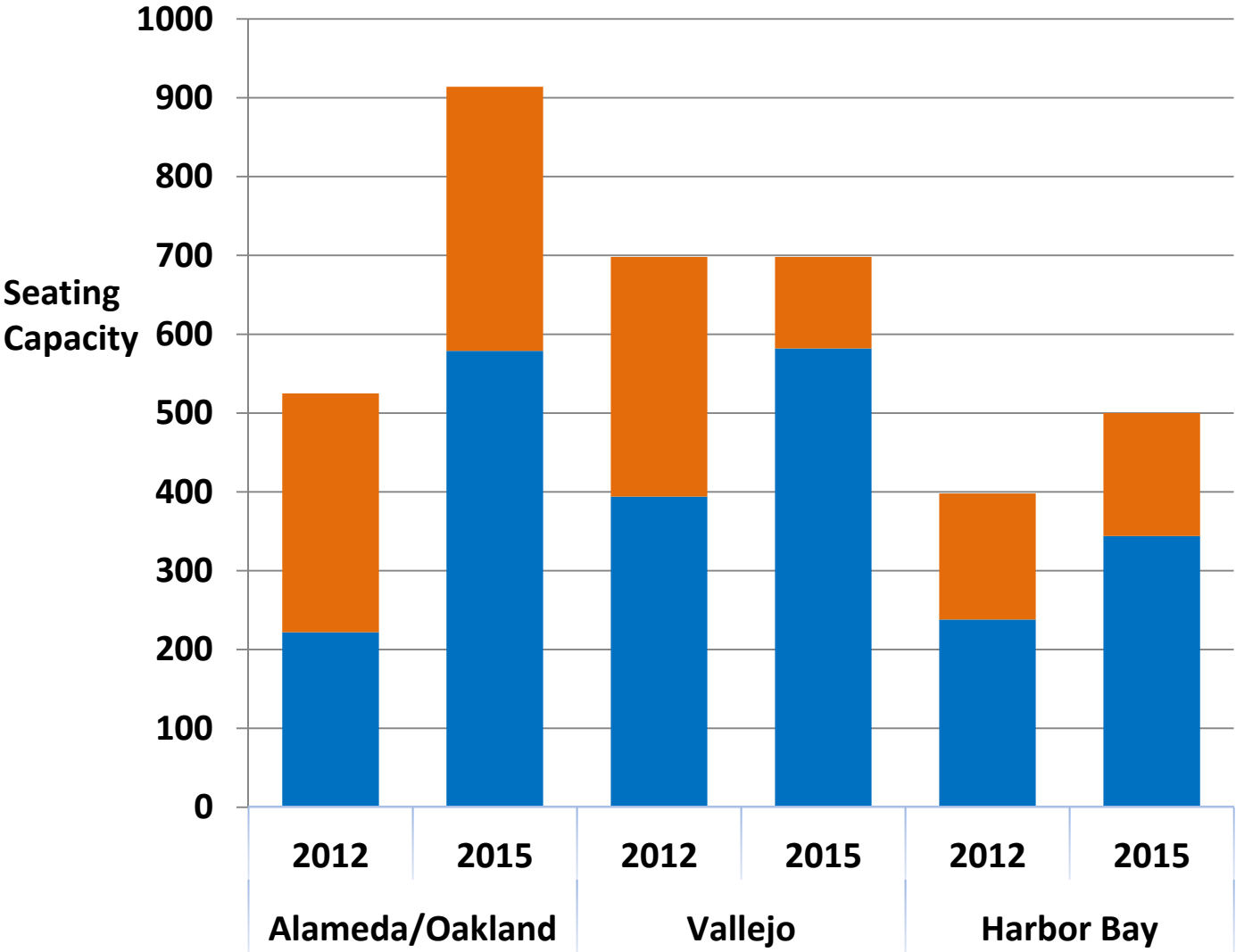
Years riding ferry



Mode other than ferry



Peak Hour Utilization by Route, 2012-2015



WETA Current Projects

Vessel Capacity Increases



Replacement & Retrofit

- 3 Replacement Vessels
 - 400-passenger capacity
- Retrofit Gemini Class Vessels
 - Up to 220 passengers

Additional

- 3 New Vessels by 2020
 - 400-passenger capacity

WETA Current Projects – Core Infrastructure

North Bay Maintenance Facility



- \$30 million project
- Mare Island location
- 5 slips
- Historic reuse of warehouse
- Emergency Operations Center

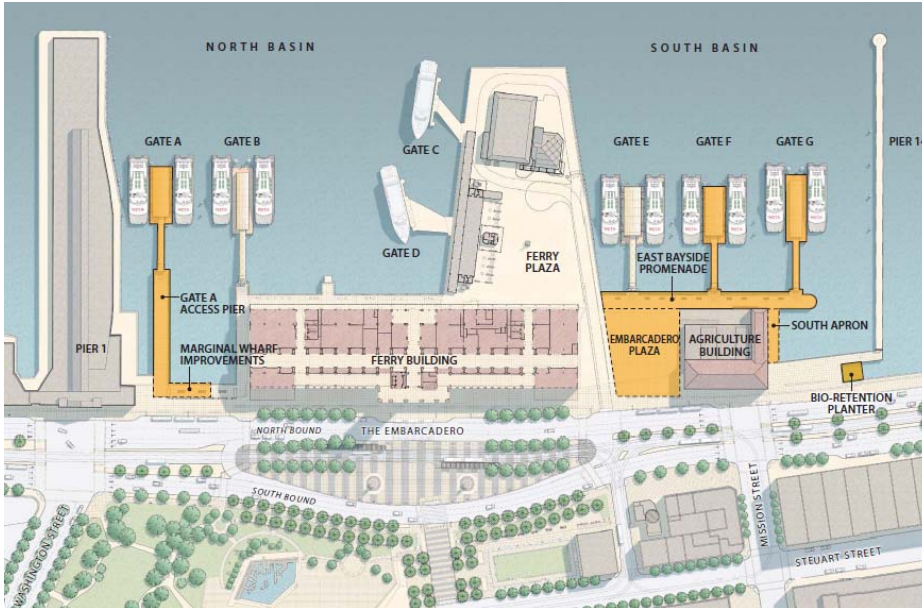
Central Bay Maintenance Facility



- \$35 million project
- Alameda Point location
- 12 slips
- Infrastructure improvements
- Emergency Operations Center

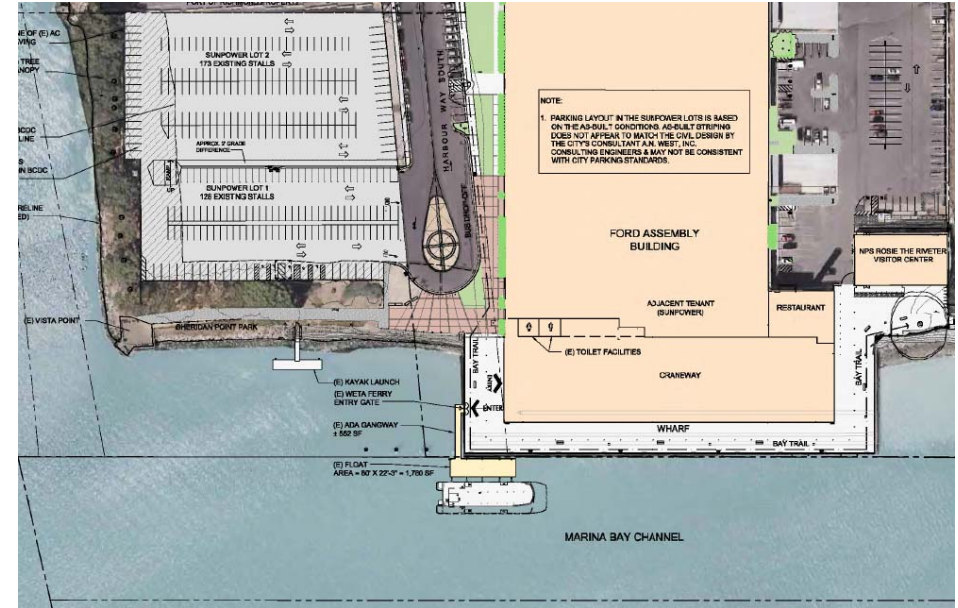
WETA Current Projects

Ferry Building Expansion



- \$80 million project
- 2 new gates in South Basin
- Pedestrian Plaza
- Enables service increases

Richmond Service



- \$48 million project
- Ford Peninsula
- 25-minutes to SF
- 2018 start
- Interlined with other services

Terminal Expansion Sites

WATER EMERGENCY
TRANSPORTATION AUTHORITY



WATER EMERGENCY TRANSPORTATION AUTHORITY

Recent Actions

- Improved to 30-minute peak frequency on Alameda-Oakland
- Additional PM peak departure to Vallejo
- Interlined crews & vessels: Harbor Bay/South SF, Vallejo/Oakland

Near Term Actions

- Schedule modifications to increase peak hour capacity
- Considering further service increases for Spring/Summer 2016
- Constraints:
 - Available operating subsidy
 - Operating vessels

Future Vision

- 15-20 minute frequencies on heavily travelled services
- Expansion to competitive markets
- More integrated network, sharing resources
- Triple peak capacity by 2025

Discussion

