



# India Basin Shoreline Park

SF BAY TRAIL STEERING COMMITTEE PRESENTATION

March 28, 2024

Prepared for San Francisco Recreation and Parks and The Trust for Public Land  
by GGN with Jensen Architects, Sherwood Design Engineers, Rana Creek, Moffatt & Nichol, Jon Brody Structural  
Engineers, Interface Engineering, Niteo Lighting, and Boudreau Associates





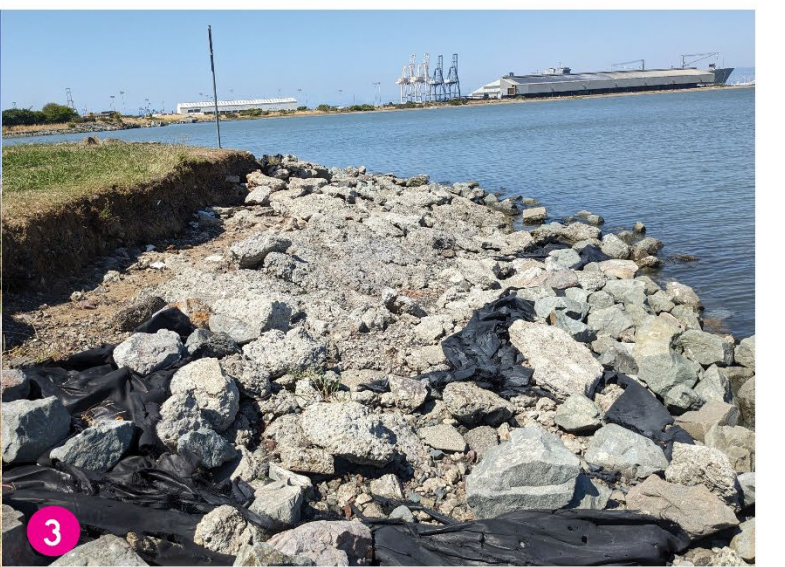
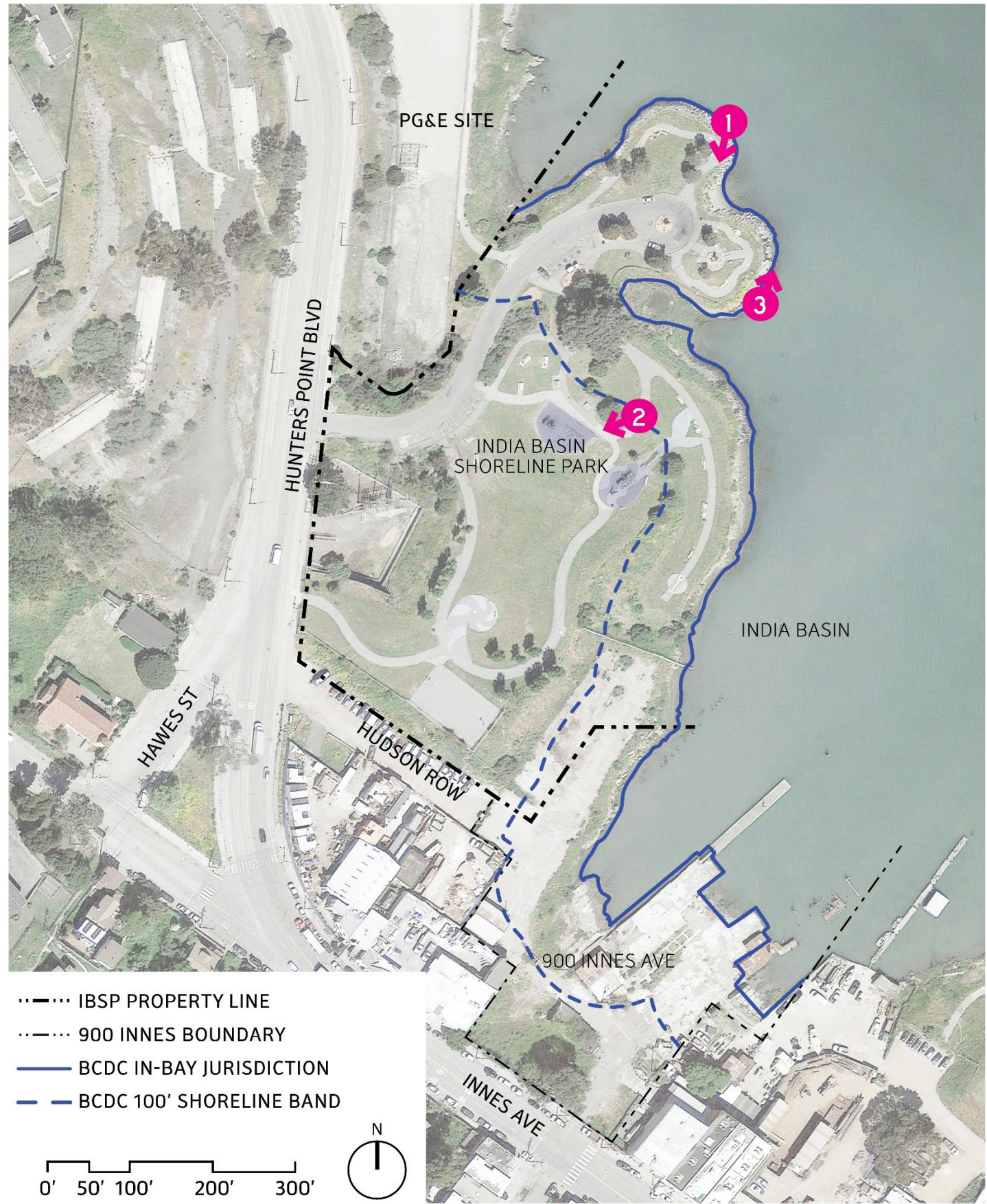
# Project Location



900 Innes: Construction Completion Anticipated Summer 2024  
IBSP: Construction Start Summer 2024

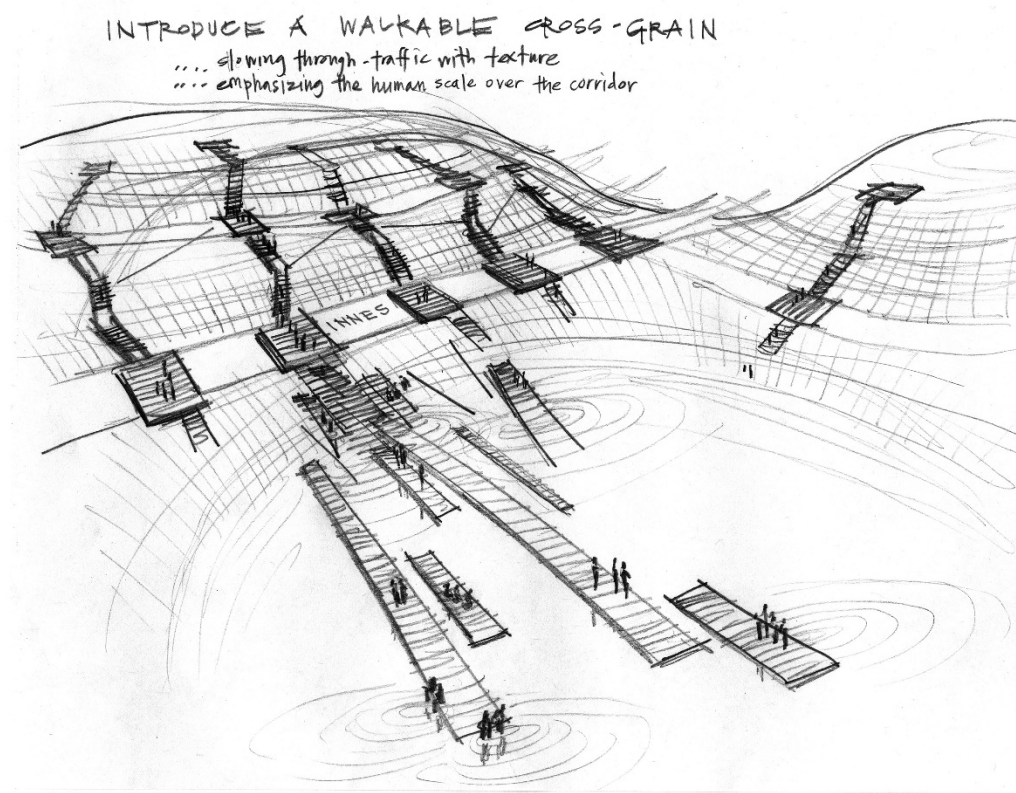
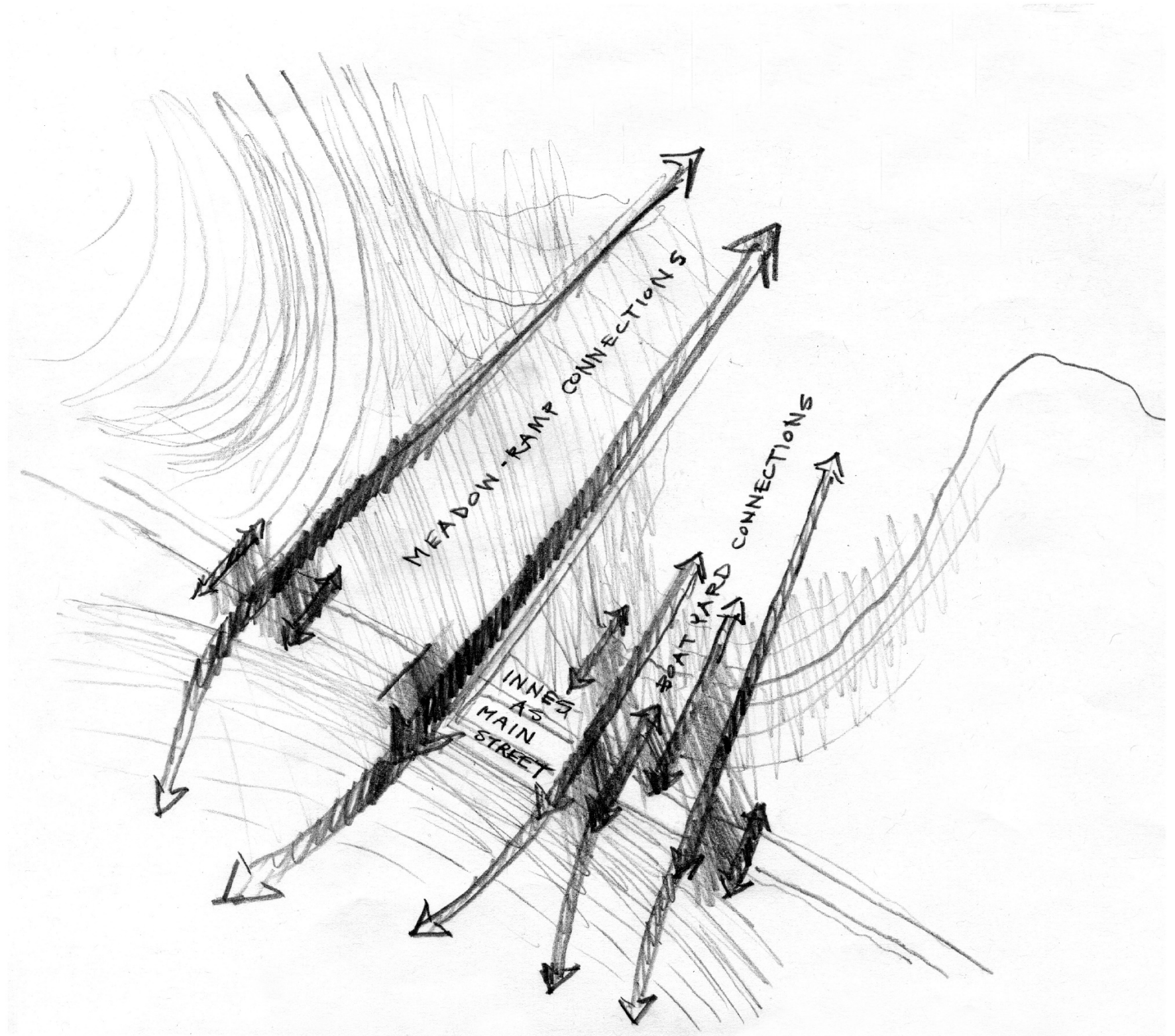
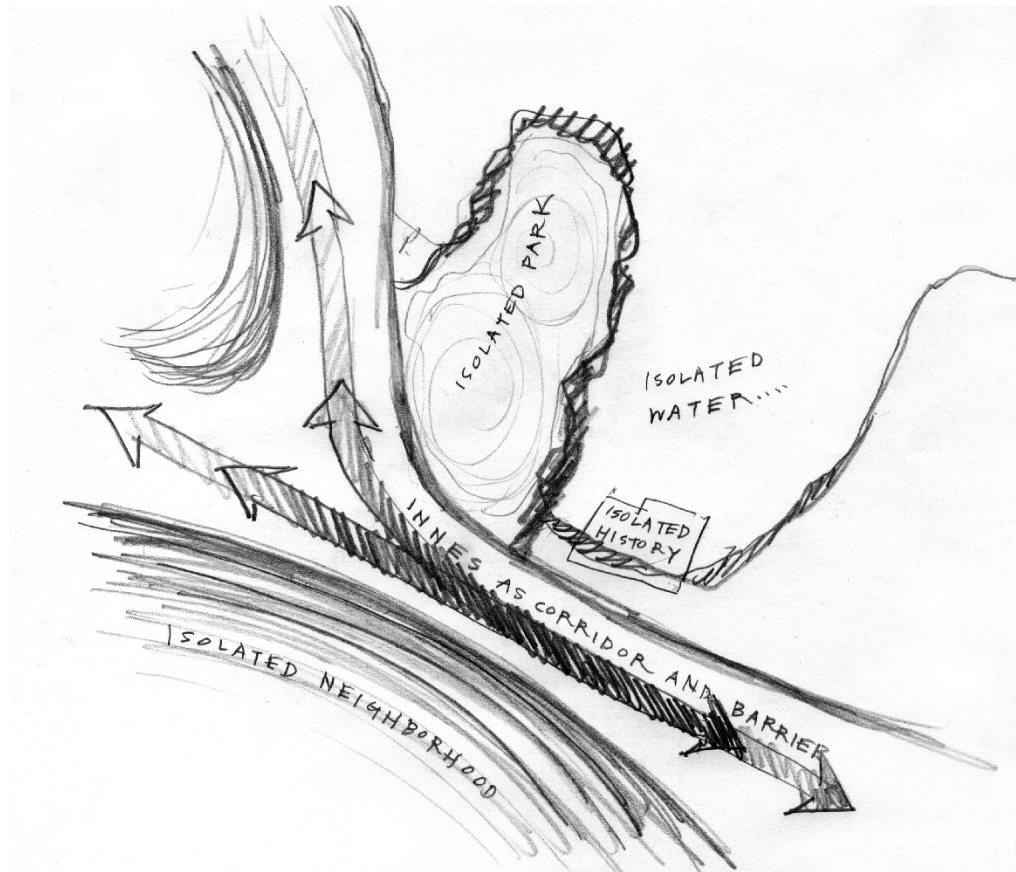


# Existing Site





# Design Goal: Prioritize Access & Connection





# Equitable Development Plan

- Support the development of the India Basin Waterfront Parks designed in partnership with the Bayview-Hunters Point community
- Stimulate local hiring through job training for construction activities, park-related concession opportunities, and recreation leadership positions.
- Create opportunities to address issues of social and environmental justice, equity, and inclusion within the Bayview Hunter’s Point communities.
- Construct more usable open space to address the population growth in a high-need and emerging neighborhood and improve recreational amenities to existing residents.



On-site Engagement



Sample Board



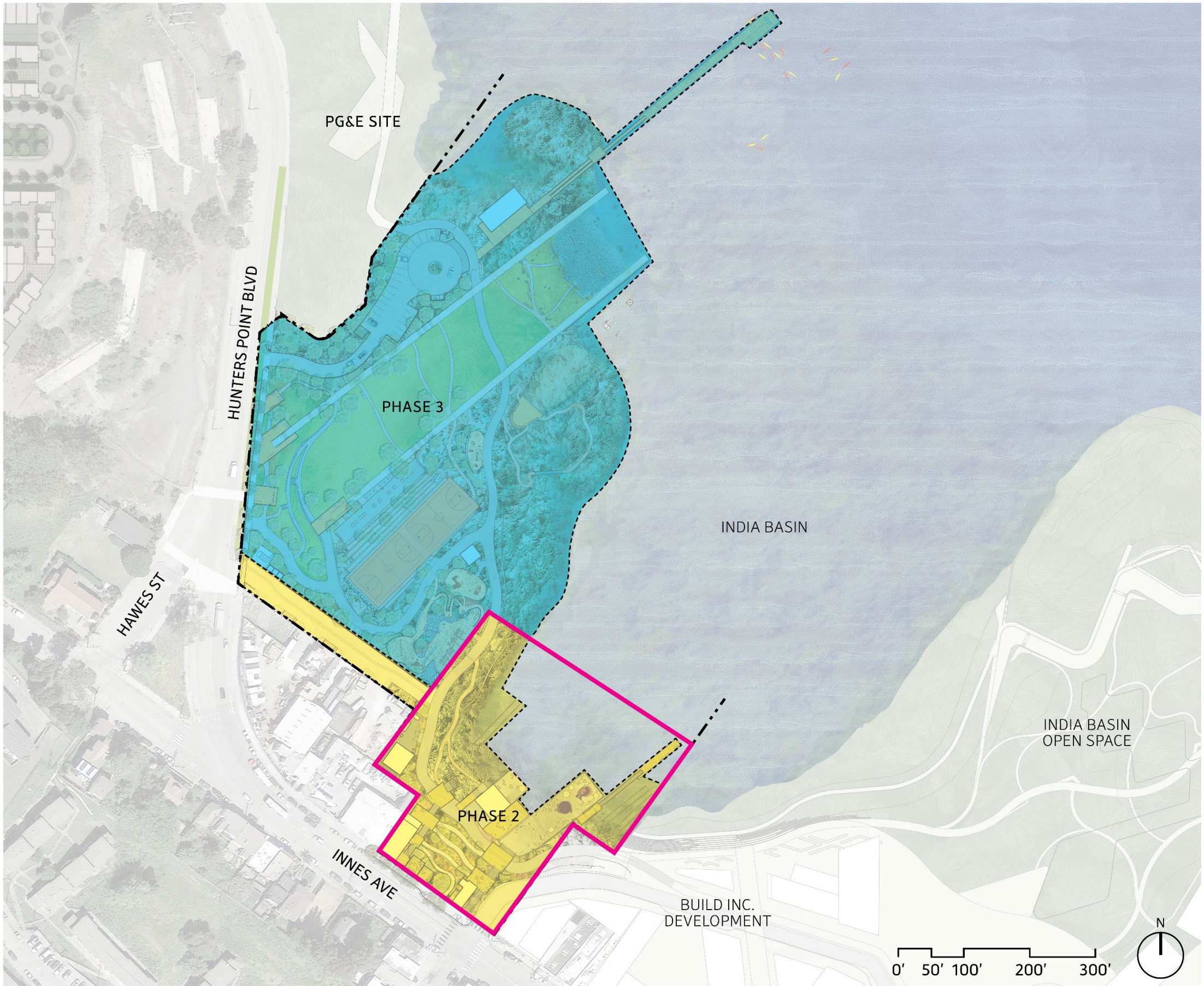


# Project Goals

1. Uphold Community Priorities
2. Connect and Provide Access
3. Create and Enhance Natural Habitat
4. Adapt to Sea Level Rise







**Phase 1: Remediation Phase (March 2021- August 2022)**

The remediation project removed contaminated soil and sediment left behind from industrial boat building and vessel repair activities and restored and capped the site with clean fill. Contaminated marine debris, abandoned structures, and deteriorated concrete was also removed to enable future park development.

**Phase 2: 900 Innes (September 2022- July 2024)**

Project is in construction. The concrete piles and slabs for Pier 1 and Pier 2 are completed and work is ongoing for the Food Pavilion, Shop Building, and Maintenance Building. Restoration work on the Shipwright's cottage is underway.

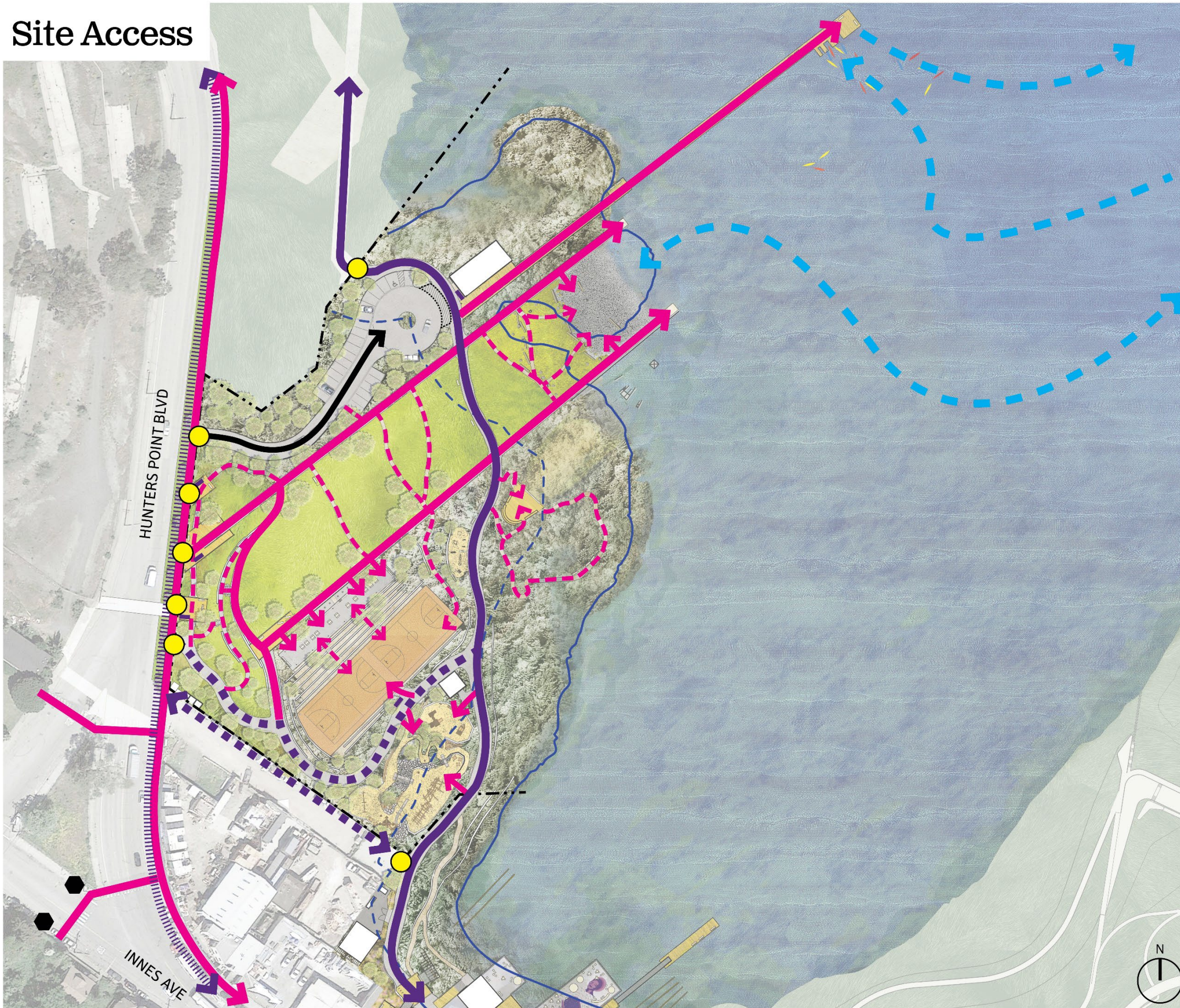
**Phase 3: IBSP (Fall 2024 - Summer 2026)**

The final phase of the project is currently under permit review. The design team has completed 90% construction documents as this design was developed in parallel with Phase 1 of 900 Innes.

- PHASE 1: REMEDIATION LOW
- PHASE 2: 900 INNES
- PHASE 3: INDIA BASIN SHORELINE PARK
- PROPERTY LINE



# Site Access



## Pedestrian & Bike Access

- ◆ BUS STOP
- PARK ENTRY
- ➔ PRIMARY CIRCULATION
- - - SECONDARY CIRCULATION
- BAY TRAIL/BLUE GREENWAY
- ▬ SHARED BIKE/PED PATH
- ||||| BIKE LANE
- BIKE PARKING

## Water Access

- WATER TRAIL

## Vehicle Access

- ➔ VEHICLE ACCESS
- ▭ VEHICLE DROP OFF

- · - · - · PARK BOUNDARY
- BCDC IN-BAY JURISDICTION
- - - BCDC 100' SHORELINE BAND





# Site Program





# Bay Trail Context

Bay Trail @ PG&E Site, North of IBSP

- 11' wide trail with 2' shoulder on either side= 15' width total



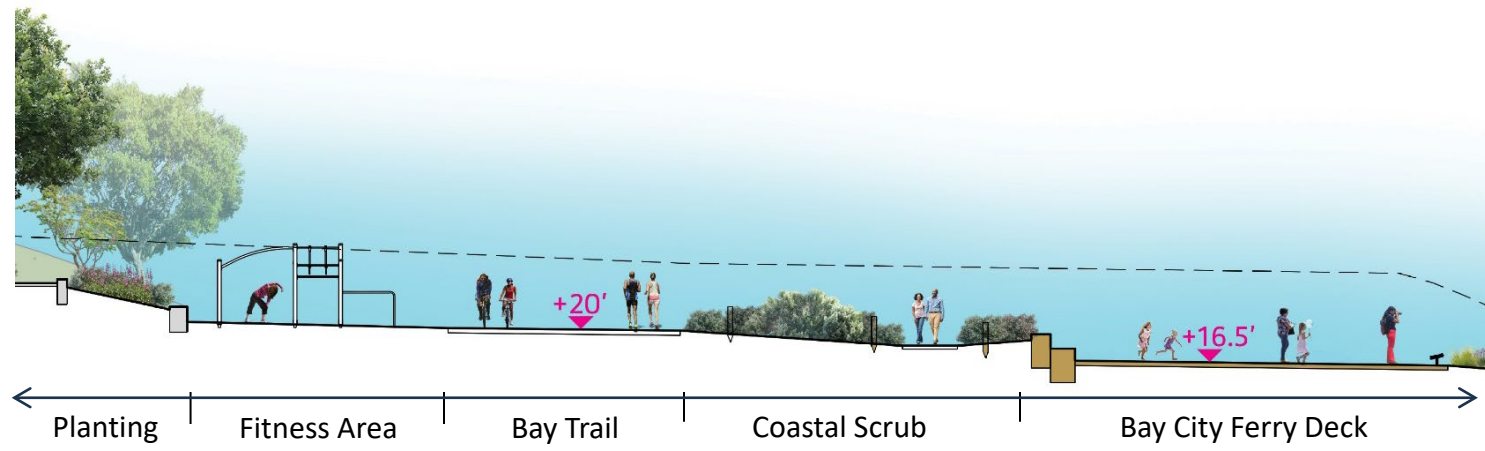
Bay Trail @ 900 Innes, South of IBSP

- 14'-10" to 16'-10" paved in most areas

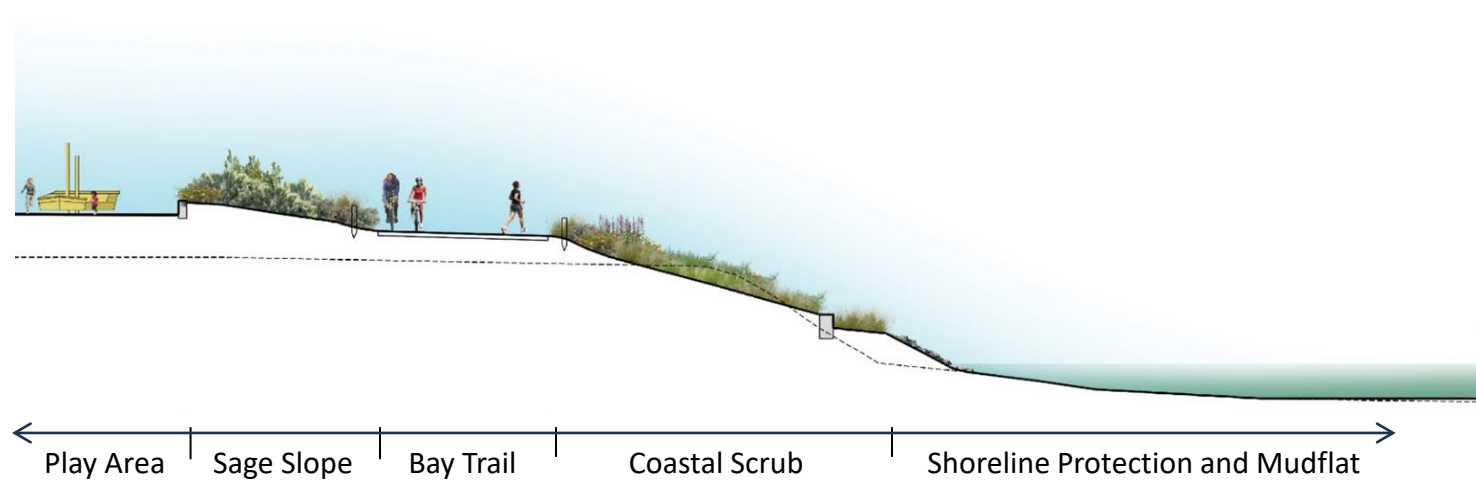




# Bay Trail at IBSP



Section A:A



Section B:B





