



Local Governments Empowering Our Communities



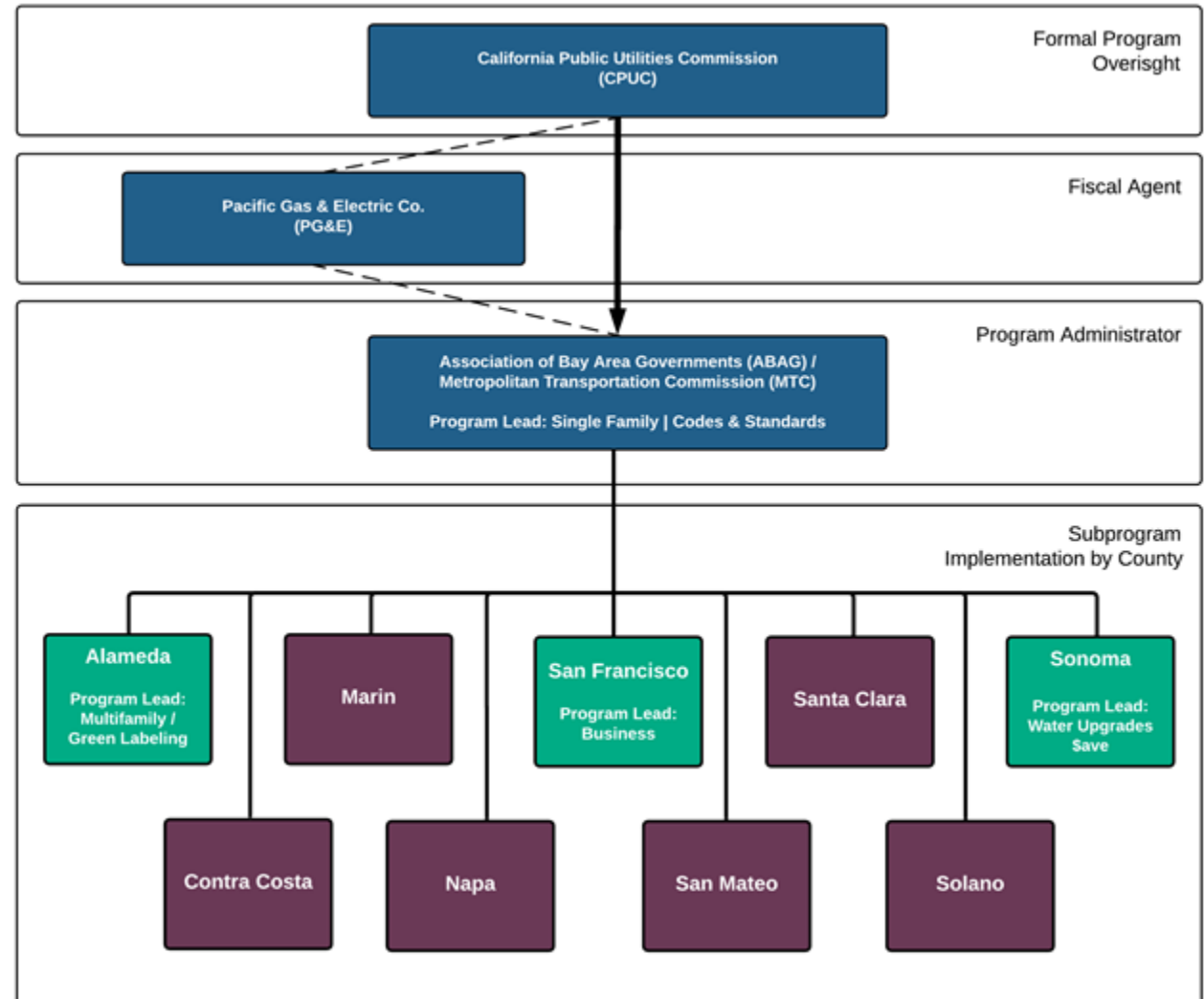
BayREN Overview and Opportunities for Collaboration

Jenny Berg, Energy Section Director, ABAG/MTC

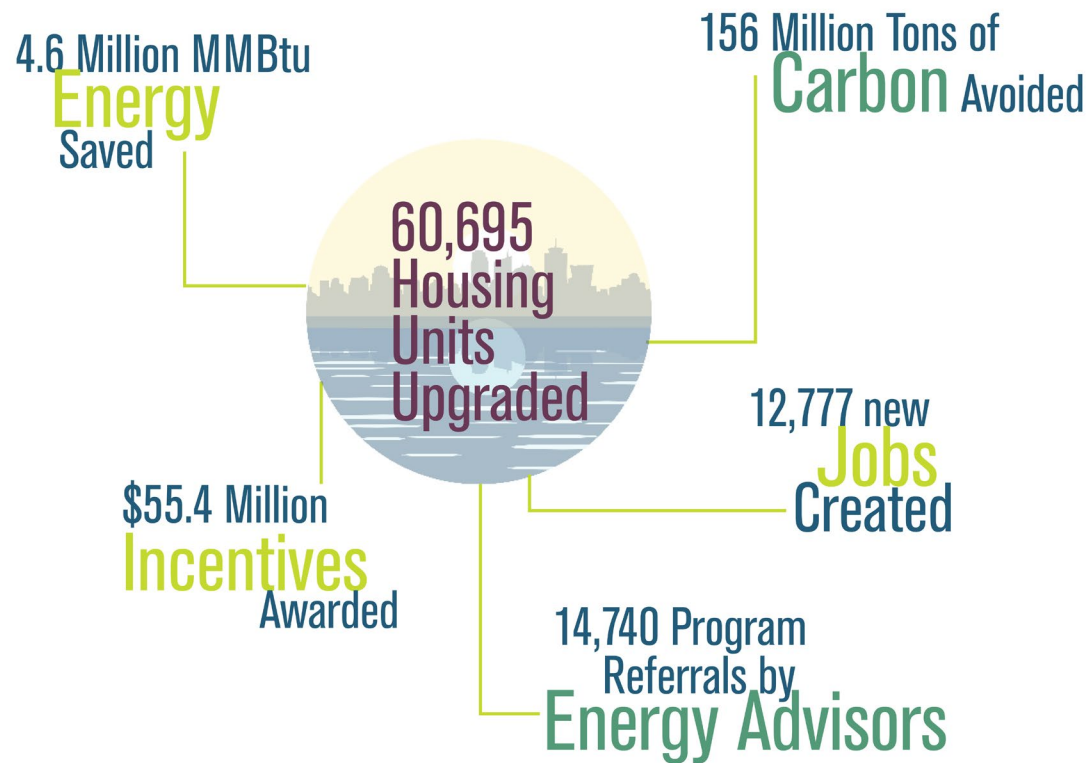
June 9, 2022

History & Structure

- Formed in 2012 by Bay Area cities and counties who saw a need for better collaboration around energy efficiency
- Now 1 of 4 RENs in the state
- Directed to:
 - Serve Hard-to-Reach
 - Fill gaps in market
 - Support innovative pilots that can be scaled



Regional Accomplishments and Impact



- **9 Counties, 101 Cities**
- 6 Programs focused on
 - ✓ Energy efficiency upgrades
 - ✓ Electrification upgrades
 - ✓ Water energy nexus
 - ✓ Raising awareness among real estate and contractor industry
 - ✓ Energy code compliance

Who We Serve

Small and
medium
businesses

Multifamily
property owners

Homeowners
& Renters

Contractors

Local
Government
Staff

Building Industry
& Real Estate
Professionals

BayREN Programs

Home+ Single
Family Program

Green Labeling
Program

Multifamily
Program

Integrated
Energy Services

Business
Program

Water Upgrades
\$ave Program

Codes &
Standards
Program

Targeted
Decarbonization
Services

Refrigerant
Replacement
Program

Climate Careers
Program

Bay Area Multifamily Building Enhancements (BAMBE)

- Eligibility: Multifamily properties w/ 5 or more dwelling units, located in 9-county Bay Area with a focus on deed restricted and NOAH
- Program offerings:
 - **1. No-Cost Energy Consulting**
 - Energy usage analysis, site visits, scope development
 - **2. Cash Rebates**
 - Flat rate \$750/unit, additional incentives for gas-to-electric conversions



BAMBE + BAHFA

- Extensive experience working with affordable property developers
- BAMBE is attractive as it lowers operational costs and provides financial support from rebates



**Episcopal
Community Services**
San Francisco



Chinatown Community
Development Center
華協中心



Case Study: Cinnabar Commons in San Jose (245 units)

Energy Savings	10.7%
Rebate Amount	\$103,750 (\$750 x 245 units)
Upgrades Installed	✓ Central Water Heaters / Boilers ✓ In-unit LED Lighting ✓ Hallway + Garage LED Lighting



Case Study: Noble Tower



Available online: <https://youtu.be/S78-9VfJUoY>

Thank you!

Jennifer Berg, Energy Section Director

jberg@bayareametro.gov

BAY AREA METRO | BayAreaMetro.gov
Association of Bay Area Governments
Metropolitan Transportation Commission

