



Bay Area Metro Center  
375 Beale Street  
San Francisco, CA 94105

## Meeting Agenda

### Regional Advisory Working Group

---

Tuesday, March 6, 2018

9:30 AM

Yerba Buena - 1st Floor

---

This meeting is scheduled to be webcast live on the Metropolitan Transportation Commission's Website: <http://mtc.ca.gov/whats-happening/meetings>

This meeting can also be accessed via WebEx:

Launch Link: <https://bamc.webex.com/bamc/j.php?MTID=m7d63cdd3a90a3ccbab07079895ed43ed>

Dial-in Number: 1-415-655-0002

Access Code: 923 813 309

#### 9:30 a.m.

1. [18-0100](#) Welcome, Introductions

**Presenter:** Ken Kirkey

#### 9:35 a.m.

- [18-0154](#) Consolidated Slide Deck

**Attachments:** [02\\_03\\_GuidingPrinciples\\_ExternalForces\\_Revised.pdf](#)

2. [18-0101](#) Futures: Developing Guiding Principles

Draft framework for Guiding Principles that identify regional aspirations over the next three decades and that will be used to guide the Futures process. Staff will share the public outreach effort underway to hear aspirations from Bay Area residents. Staff will use feedback from stakeholders to craft proposed Guiding Principles by April.

**Action:** Information

**Presenter:** Michael Germeraad

**Attachments:** [02\\_GuidingPrinciples\\_Development.pdf](#)

**10:05 a.m.**

**3.     [18-0102](#)     Futures: Identifying External Forces**

Discussion on a series of external forces that may shape the future of the region, the nation, and the world. Seeking input on additional external forces that should be considered through this effort in advance of crafting the futures later this spring.

**Action:**           Information

**Presenter:**       Dave Vautin

**Attachments:**     [03\\_External Forces.pdf](#)

**10:25 a.m.**

**5. Next Steps / Other Business / Public Comments**

**10:30 a.m.**

**6. Adjournment / Next Meeting**

**The next meeting of the Regional Advisory Working Group will be Tuesday, April 3, 2018 at 9:30 a.m. at the Bay Area Metro Center, 375 Beale Street, San Francisco, CA.**

**Public Comment:** The public is encouraged to comment on agenda items at Committee meetings by completing a request-to-speak card (available from staff) and passing it to the Committee secretary. Public comment may be limited by any of the procedures set forth in Section 3.09 of MTC's Procedures Manual (Resolution No. 1058, Revised) if, in the chair's judgment, it is necessary to maintain the orderly flow of business.

**Meeting Conduct:** If this meeting is willfully interrupted or disrupted by one or more persons rendering orderly conduct of the meeting unfeasible, the Chair may order the removal of individuals who are willfully disrupting the meeting. Such individuals may be arrested. If order cannot be restored by such removal, the members of the Committee may direct that the meeting room be cleared (except for representatives of the press or other news media not participating in the disturbance), and the session may continue.

**Record of Meeting:** Committee meetings are recorded. Copies of recordings are available at a nominal charge, or recordings may be listened to at MTC offices by appointment. Audiocasts are maintained on MTC's Web site ([mtc.ca.gov](http://mtc.ca.gov)) for public review for at least one year.

**Accessibility and Title VI:** MTC provides services/accommodations upon request to persons with disabilities and individuals who are limited-English proficient who wish to address Commission matters. For accommodations or translations assistance, please call 415.778.6757 or 415.778.6769 for TDD/TTY. We require three working days' notice to accommodate your request.

**可及性和法令第六章:** MTC 根據要求向希望來委員會討論有關事宜的殘疾人士及英語有限者提供服務/方便。需要便利設施或翻譯協助者，請致電 415.778.6757 或 415.778.6769 TDD / TTY。我們要求您在三個工作日前告知，以滿足您的要求。

**Acceso y el Titulo VI:** La MTC puede proveer asistencia/facilitar la comunicación a las personas discapacitadas y los individuos con conocimiento limitado del inglés quienes quieran dirigirse a la Comisión. Para solicitar asistencia, por favor llame al número 415.778.6757 o al 415.778.6769 para TDD/TTY. Requerimos que solicite asistencia con tres días hábiles de anticipación para poderle proveer asistencia.

---

Attachments are sent to Committee members, key staff and others as appropriate. Copies will be available at the meeting.

All items on the agenda are subject to action and/or change by the Committee. Actions recommended by staff are subject to change by the Committee.



# Metropolitan Transportation Commission

375 Beale Street, Suite 800  
San Francisco, CA 94105

## Legislation Details (With Text)

---

**File #:** 18-0100      **Version:** 1      **Name:**

**Type:** Report      **Status:** Informational

**File created:** 1/31/2018      **In control:** Regional Advisory Working Group

**On agenda:** 3/6/2018      **Final action:**

**Title:** Welcome, Introductions

**Sponsors:**

**Indexes:**

**Code sections:**

**Attachments:**

| Date | Ver. | Action By | Action | Result |
|------|------|-----------|--------|--------|
|------|------|-----------|--------|--------|

**Subject:**  
Welcome, Introductions

**Presenter:**  
Ken Kirkey



# Metropolitan Transportation Commission

375 Beale Street, Suite 800  
San Francisco, CA 94105

## Legislation Details (With Text)

---

**File #:** 18-0154      **Version:** 1      **Name:**

**Type:** Report      **Status:** Informational

**File created:** 2/15/2018      **In control:** Regional Advisory Working Group

**On agenda:** 3/6/2018      **Final action:**

**Title:** Consolidated Slide Deck

**Sponsors:**

**Indexes:**

**Code sections:**

**Attachments:** [02\\_03\\_GuidingPrinciples\\_ExternalForces\\_Revised.pdf](#)

| Date | Ver. | Action By | Action | Result |
|------|------|-----------|--------|--------|
|------|------|-----------|--------|--------|

**Subject:**  
Consolidated Slide Deck

**Attachments:**

***Futures:***

# Identifying Guiding Principles & Identifying External Forces

Michael Germeraad and Dave Vautin - MTC/ABAG

Regional Advisory Working Group

March 6, 2018

*Futures* is a blue-sky planning effort that seeks to identify a set of resilient strategies, policies, and projects that can be incorporated into the next RTP/SCS.

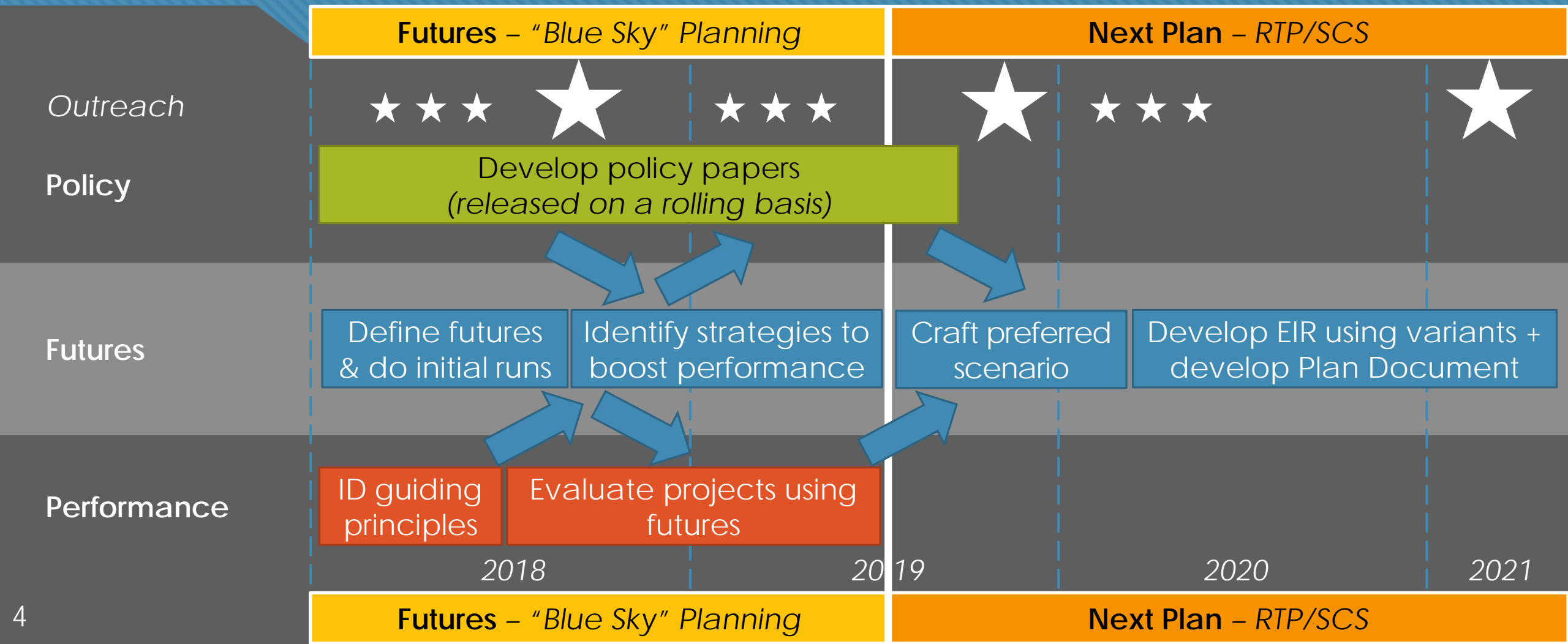


# Process Overview





High-performing strategies and projects from *Futures* – those that are resilient to uncertainties – **will be recommended for inclusion in the Preferred Scenario** for the Next Plan (RTP/SCS).

# Process Overview



# Key Futures Components & Milestones

## POLICY





-  **Paper Release Events**  
(June/Sept./Dec. 2018;  
March/June/Sept. 2019)
-  **Integration into Preferred Scenario**  
(Summer/Fall 2019)

## FUTURES

-  **Guiding Principles**  
(Spring 2018)
-  **External Forces/  
Futures Identification**  
(through June 2018)
-  **"Status Quo" Analysis**  
(through September 2018)
-  **Policy Solutions**  
(through Early 2019)
-  **"Win-Win" Strategy Report**  
(through May 2019)

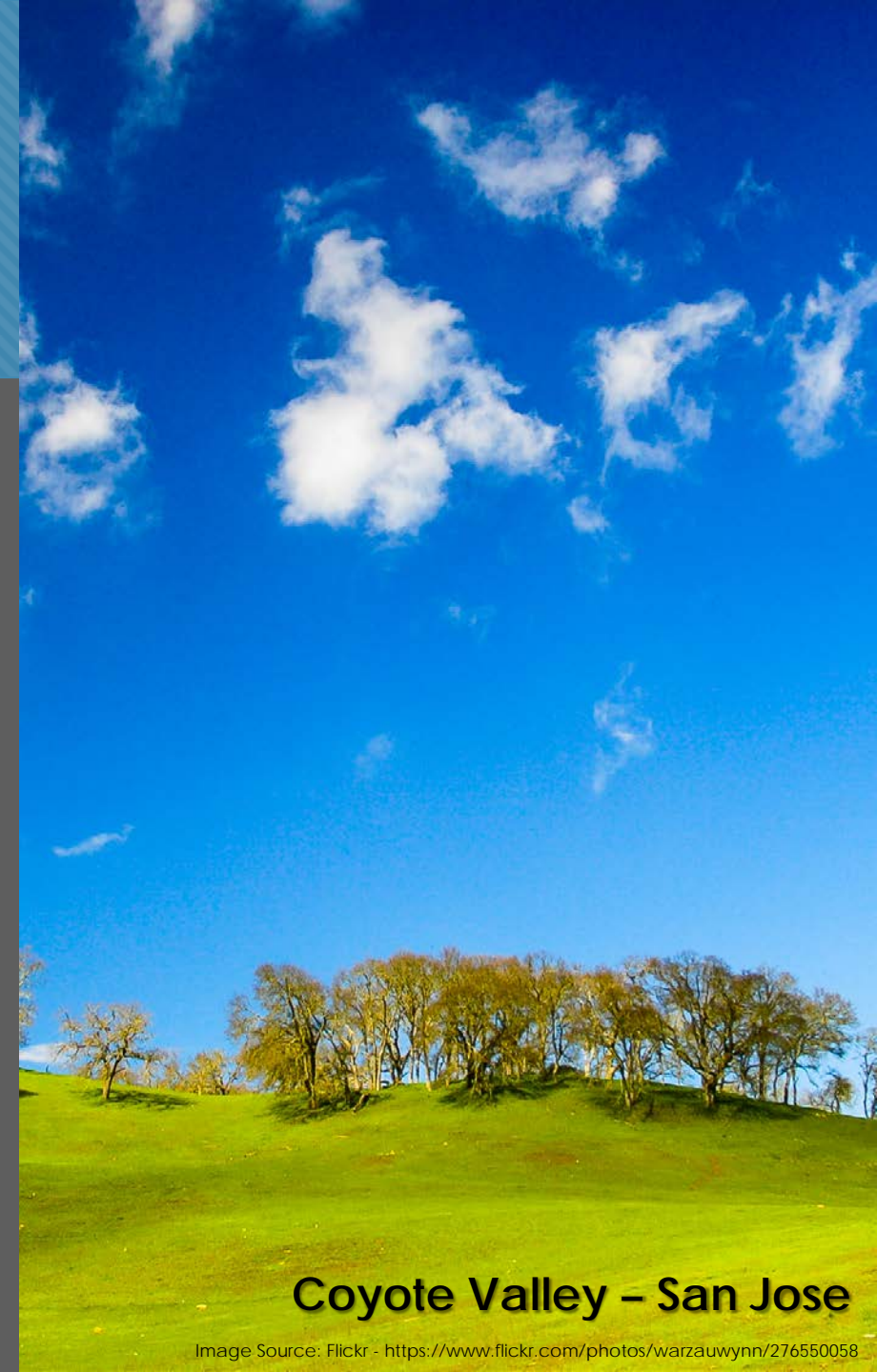


## PERFORMANCE

-  **Major Projects Data Update + Visionary Projects Submission**  
(Spring 2018)
-  **Evaluation Framework Finalization**  
(July 2018)
-  **Draft Results Release**  
(March 2019)
-  **Integration of High-Performers into Preferred**  
(Summer/Fall 2019)

# Guiding Principles Development

- What is their **structure** and how will they be **used**?
- What is our methodology and **outreach strategy**?
- What are the immediate **next steps**?

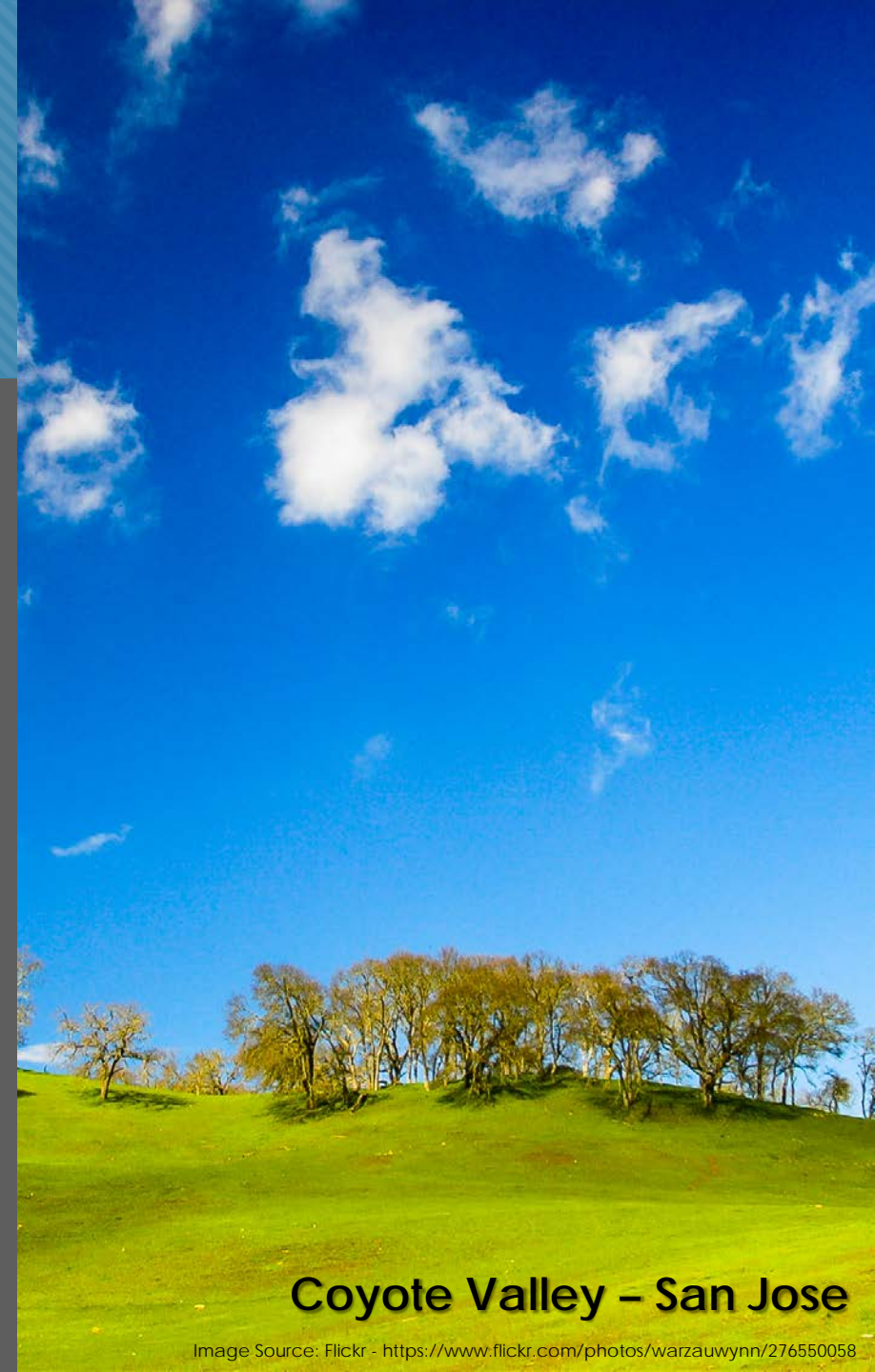


**Coyote Valley – San Jose**

Image Source: Flickr - <https://www.flickr.com/photos/warzauiwynn/276550058>

# Guiding Principles Structure & Use

- Inform evaluation of alternative futures.
- Explore the policy impacts through multiple lenses.
- Inform project performance.

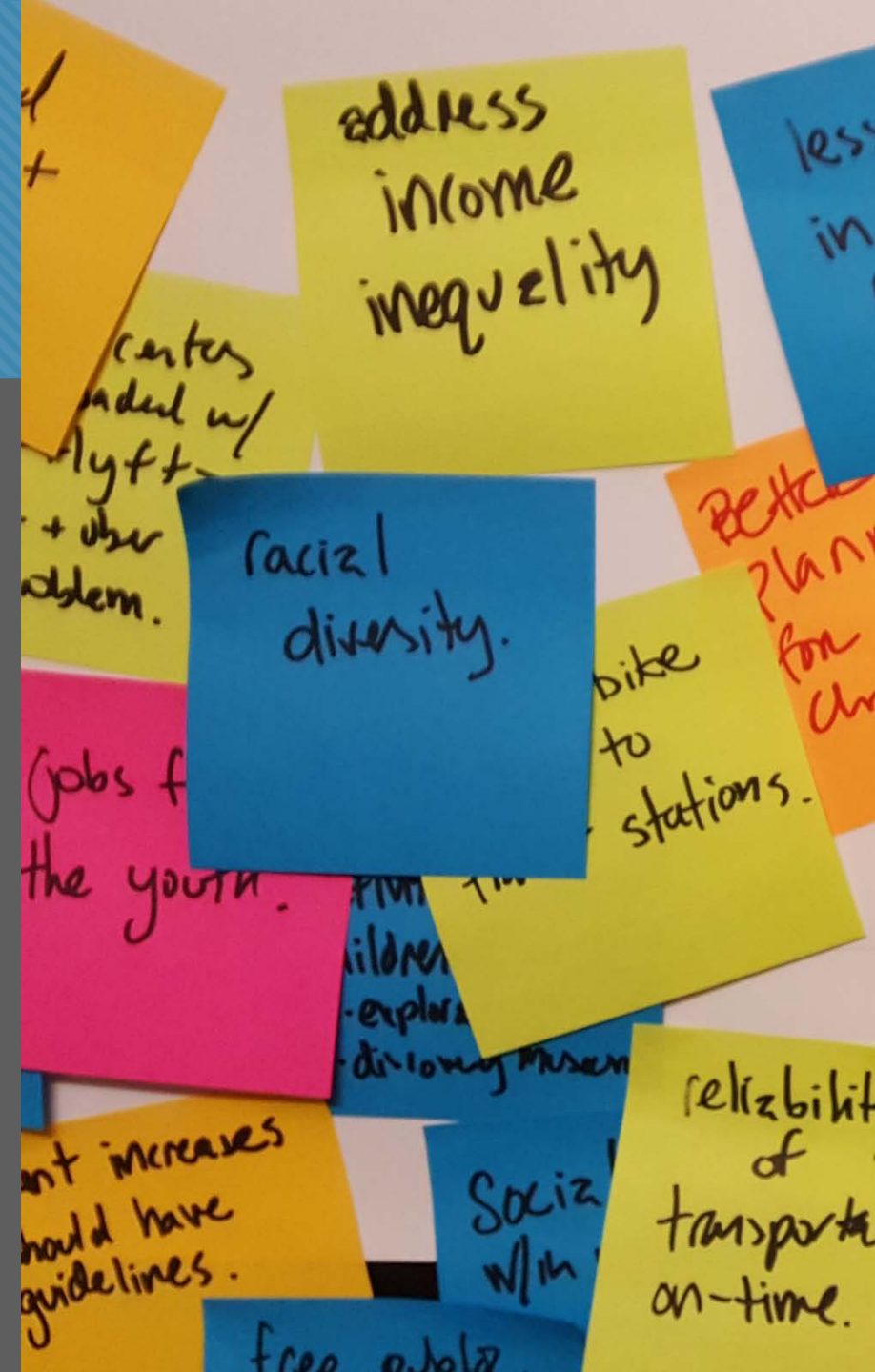


**Coyote Valley – San Jose**

Image Source: Flickr - <https://www.flickr.com/photos/warzauiwynn/276550058>

# Guiding Principles Outreach Strategy

- Pop-Ups
- Online Survey
- Formal Feedback at April Standing Meetings
- Review of Regional and Local Long-Range Plans



# Guiding Principles **Next Steps**

## Three ways to help us develop Guiding Principles:

- **April RAWG Meeting:** Provide feedback on draft Principles by April 17<sup>th</sup>.
- **Online Survey:** Share on your platforms (newsletter, email lists, social media).
- **Today's Exercise:** Get out your phone and engage now.

# Live-polling exercise

Go to: [pollev.com/mtcabag888](https://pollev.com/mtcabag888)

# What is an External Force?

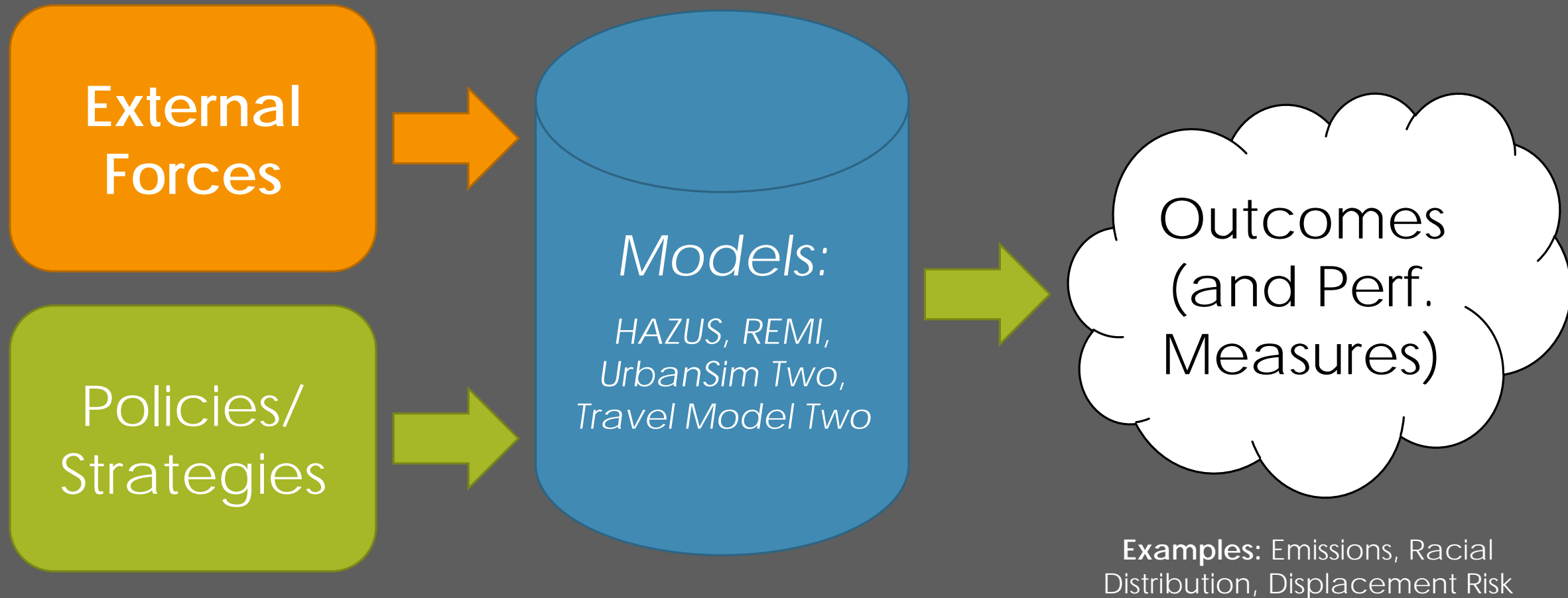
For the purposes of the *Futures* initiative, we are defining an external force as:

**A long-term trend or one-time event which affects the Bay Area but for which Bay Area residents and elected officials have little-to-no influence.**



U.S. Capitol  
Washington, DC

# What is an External Force?



# External Forces – Categories

REFER TO  
ATTACHMENT A



POLITICAL



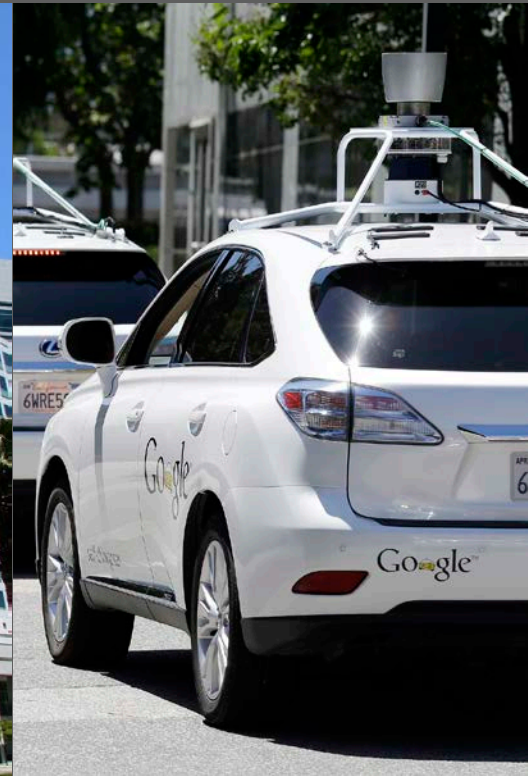
ENVIRONMENTAL



ECONOMIC



LAND USE



TRANSPORTATION

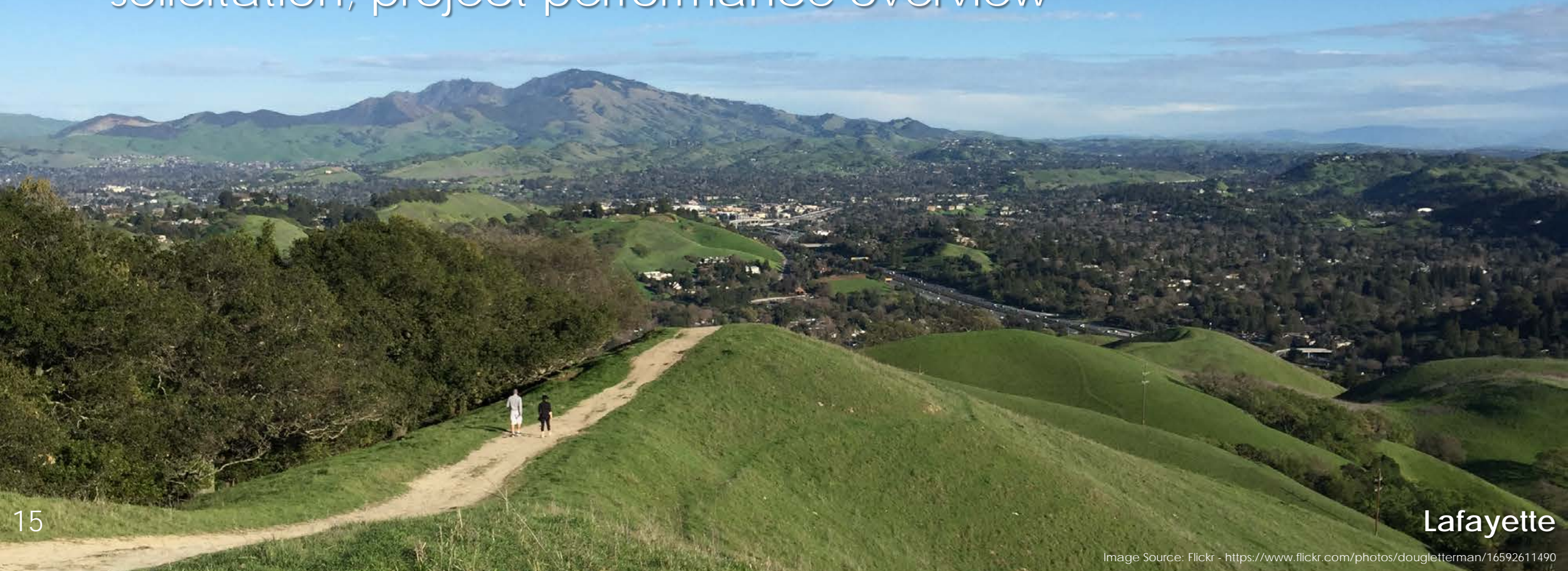
Image Sources:  
CNN - <http://i2.cdn.turner.com/money/dam/assets/121109083003-google-china-tablet-large.jpg>  
Flickr - <https://www.flickr.com/photos/photographingtravis/16863363155>  
Flickr - <https://www.flickr.com/photos/eschipul/32607722422/in/photolist-RFr6QJ>

# Live-polling exercise

Go to: [pollev.com/mtcabag888](https://pollev.com/mtcabag888)

# What's Next?

- **April 2018** – proposed guiding principles; futures development workshop
- **May 2018** – transformative investments solicitation; project performance overview





# Metropolitan Transportation Commission

375 Beale Street, Suite 800  
San Francisco, CA 94105

## Legislation Details (With Text)

|                      |  |                      |   |                                 |  |
|----------------------|--|----------------------|---|---------------------------------|--|
| <b>File #:</b>       | 18-0101                                | <b>Version:</b>      | 1 | <b>Name:</b>                    |  |
| <b>Type:</b>         | Report                                 | <b>Status:</b>       |   | Informational                   |  |
| <b>File created:</b> | 1/31/2018                              | <b>In control:</b>   |   | Regional Advisory Working Group |  |
| <b>On agenda:</b>    | 3/6/2018                               | <b>Final action:</b> |   |                                 |  |
| <b>Title:</b>        | Futures: Developing Guiding Principles |                      |   |                                 |  |

Draft framework for Guiding Principles that identify regional aspirations over the next three decades and that will be used to guide the Futures process. Staff will share the public outreach effort underway to hear aspirations from Bay Area residents. Staff will use feedback from stakeholders to craft proposed Guiding Principles by April.

### Sponsors:

### Indexes:

### Code sections:

**Attachments:** [02\\_GuidingPrinciples\\_Development.pdf](#)

| Date | Ver. | Action By | Action | Result |
|------|------|-----------|--------|--------|
|------|------|-----------|--------|--------|

### Subject:

Futures: Developing Guiding Principles

Draft framework for Guiding Principles that identify regional aspirations over the next three decades and that will be used to guide the Futures process. Staff will share the public outreach effort underway to hear aspirations from Bay Area residents. Staff will use feedback from stakeholders to craft proposed Guiding Principles by April.

### Presenter:

Michael Germeraad

### Recommended Action:

Information

### Attachments:



## Memorandum

TO: Regional Advisory Working Group

DATE: February 27, 2018

FR: Michael Germeraad

RE: Futures: Developing Guiding Principles

### Summary

In March, through an outreach driven process, staff will develop Guiding Principles (Principles) which will be used throughout the *Futures* process. Staff will return to RAWG in April for feedback on the proposed Principles.

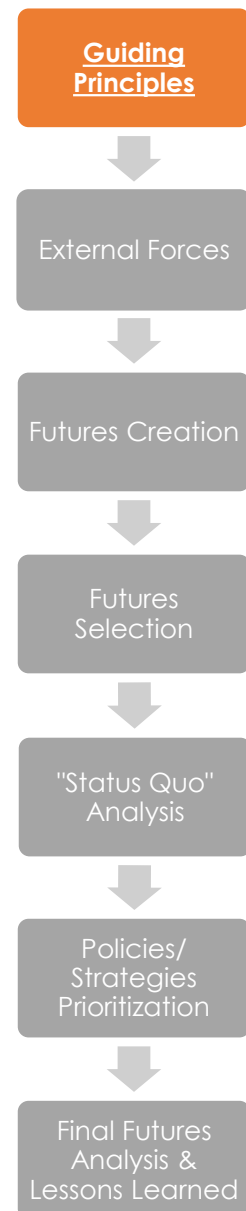
### Overview of the Futures Initiative

Defining Guiding Principles is the first step of the overall *Futures* initiative, which includes an exploration of potential futures, a suite of policy analyses, and a robust project evaluation process. *Futures* is intended to address a range of topics, including but not limited to transportation, land use, economic development, and resilience. Based on a set of guiding principles, stakeholders and the public will identify policies, strategies, and investments that should be aligned with each future to make progress towards our regional vision despite potential headwinds. *Futures* is expected to last through summer 2019, at which point high-performing policies, strategies, and investments will be integrated into the preferred scenario for the 2021 Regional Transportation Plan/Sustainable Communities Strategy (RTP/SCS).

### Structure and Use of Guiding Principles

The Guiding Principles will be used throughout the 18-month *Futures* process to guide decision-making across all key elements of the *Futures* initiative. For example, the Guiding Principles will be used to:

- **Inform the evaluation of futures.** Staff will measure how a suite of external forces directly impact the region – the Principles will be used to prioritize strategies that maximize the region's performance despite headwinds from external forces that exist in a given future.
- **Explore the indirect impacts of policies.** Staff will create a set of policy reports to explore high-impact strategies that could be major drivers in shaping the region – the Principles will help ensure that each report identifies policies in alignment with a consistent regional vision.
- **Inform transportation project performance.** While benefit-cost analysis will play a primary role in project performance analyses, the Principles will be used qualitatively to determine if projects align with the regional vision. The Principles could be used as a potential screening mechanism in this process.



**Figure 1:** Primary steps of the Futures process.

After the finalization of the Guiding Principles, staff will identify a handful of quantifiable metrics for use in futures analyses to determine if progress is being made on that topic area, leveraging the existing indicators on Vital Signs. For topics outside the scope of existing indicators, qualitative methods may also be used. While the Guiding Principles are not the ultimate vision, goals, and performance targets for the 2021 Regional Transportation Plan/Sustainable Communities Strategy, they will be a key input for that process in 2019.

### **Guiding Principles Outreach Strategy**

Staff will use four methods to craft the Principles: pop-up public outreach events, online outreach surveys, stakeholder feedback at standing meetings, and a review of vision statements from other long-range regional and local planning processes.

Pop-up outreach began the last week of February and will run throughout March across the region. In total, staff will set up over 20 stations across the region for several hours at each location and invite the public to share their aspirations for the Bay Area. Events will be held in all nine counties at a variety of high-traffic venues. The process is structured to engage a broad spectrum of Bay Area residents, including those that would be unlikely to attend a traditional workshop. **Attachment A** has the core questions staff is asking the public and a summary of the geographic coverage of the pop-up events. In March, the agency will use existing mailing lists and social media advertising to promote a short online survey to bolster input into the process. The Regional Advisory Working Group (RAWG) and the MTC Planning / ABAG Administrative Committee members will be invited to comment on draft principles in April. Finally, to support the outreach, vision statements and principles from other regional initiatives, as well as a random sample of local general plans, will provide staff with sample structures for the Principles. Staff are interested in developing a succinct set of goals that have a high level of interest from the public and from stakeholders that are broadly shared in all counties.

### **Guiding Principles Next Steps**

At the April 3<sup>rd</sup> RAWG meeting, staff will provide a detailed summary of outreach and proposed Principles informed by events, survey submissions, and regional and local scans. RAWG members will be invited to provide comment by letter or email on the proposed Principles by April 17<sup>th</sup>. The proposed Principles will be taken to the April 13<sup>th</sup> joint committee meeting to update members on the *Futures* process and offer the opportunity to comment. Following the comment period, staff will finalize Principles by early May.

### **Attachment:**

- Attachment A: Guiding Principles Outreach Calendar
- Presentation

## Outreach Questions and Coverage

### Outreach Questions: Online Survey

The online survey will be promoted through online social media and through partner agencies and stakeholders. The survey will be available in English, Chinese (Cantonese), and Spanish, and will ask the following questions:

- What are the most pressing issues we should consider as we plan for life in the Bay Area in 2050? Choose your top three. (*multiple choice, answer choices randomized per participant*)
  - (1) Affordable housing, (2) Traffic congestion, (3) Homelessness, (4) Crime/Safety/Police, (5) Overcrowding/Sustainable growth, (6) Economy/Jobs, (7) Cost of living, (8) Immigration, (9) Diversity and Equity, (10) Taxes/the Budget, (11) Infrastructure, (12) Public transportation, (13) Environment, (14) Education/Schools (15) Health care, (16) Disaster recovery (e.g., earthquakes, fires, etc.), (17) New technologies (e.g., autonomous vehicles/self-driving cars, electric vehicles, etc.)
- The year is 2050. What is one way that
  - your housing improved or changed? (*open-ended response*)
  - your ability to get places improved or changed? (*open-ended response*)
  - your daily life improved or changed? (*open-ended response*)
  - our natural environment improved or changed? (*open-ended response*)
  - your economic situation/job improved or changed? (*open-ended response*)
  - your community improved or changed? (*open-ended response*)

### Outreach Questions: Pop-Up

Pop-Up outreach will occur across the region – the geographic coverage of the events is summarized in Table 1. At each Pop-Up event, staff will ask two questions:

- Thinking about our region's housing, economy and jobs, transportation, environment, communities or other issues...
  - Which qualities of today's Bay Area do you hope remain in 2050?
  - Which qualities of today's Bay Area do you hope will change by 2050?

Participants who wish to share feedback in long-form can share on notepads. Members of the public who speak Chinese (Cantonese) and Spanish when non-fluent staff are present, will be directed to the online survey.

**Table 1: Geographic Coverage of Pop-Up Events**

| <i>County</i>                                    | <i>Number of Events</i> |
|--|-------------------------|
| <i>Marin</i>                                     | <i>2</i>                |
| <i>Sonoma</i>                                    | <i>2</i>                |
| <i>Napa</i>                                      | <i>1</i>                |
| <i>Solano</i>                                    | <i>2</i>                |
| <i>Contra Costa</i>                              | <i>2</i>                |
| <i>Alameda</i>                                   | <i>4</i>                |
| <i>Santa Clara</i>                               | <i>4</i>                |
| <i>San Mateo</i>                                 | <i>3</i>                |
| <i>San Francisco</i>                             | <i>3</i>                |
| <i>Regional (YES Conference, Ferry Building)</i> | <i>2</i>                |
| <i>TOTAL</i>                                     | <i>25</i>               |



# Metropolitan Transportation Commission

375 Beale Street, Suite 800  
San Francisco, CA 94105

## Legislation Details (With Text)

---

|                      |                                      |                      |   |                                 |  |
|----------------------|--------------------------------------|----------------------|---|---------------------------------|--|
| <b>File #:</b>       | 18-0102                              | <b>Version:</b>      | 1 | <b>Name:</b>                    |  |
| <b>Type:</b>         | Report                               | <b>Status:</b>       |   | Informational                   |  |
| <b>File created:</b> | 1/31/2018                            | <b>In control:</b>   |   | Regional Advisory Working Group |  |
| <b>On agenda:</b>    | 3/6/2018                             | <b>Final action:</b> |   |                                 |  |
| <b>Title:</b>        | Futures: Identifying External Forces |                      |   |                                 |  |

Discussion on a series of external forces that may shape the future of the region, the nation, and the world. Seeking input on additional external forces that should be considered through this effort in advance of crafting the futures later this spring.

**Sponsors:**

**Indexes:**

**Code sections:**

**Attachments:** [03 External Forces.pdf](#)

| Date | Ver. | Action By | Action | Result |
|------|------|-----------|--------|--------|
|------|------|-----------|--------|--------|

**Subject:**

Futures: Identifying External Forces

Discussion on a series of external forces that may shape the future of the region, the nation, and the world. Seeking input on additional external forces that should be considered through this effort in advance of crafting the futures later this spring.

**Presenter:**

Dave Vautin

**Recommended Action:**

Information

**Attachments:**

## Memorandum

TO: Regional Advisory Working Group

DATE: February 27, 2018

FR: Dave Vautin

RE: Futures: Identifying External Forces

External forces define our everyday lives – none of us can truly anticipate or affect fluctuations in gas prices or shifts in federal tax policy, for example. In the same vein, external forces affect the future of our region as well. Today, staff is looking for input on what external forces may exist – today or in the future – that will affect the daily lives of Bay Area residents through 2050.

### Overview of the *Futures* Initiative

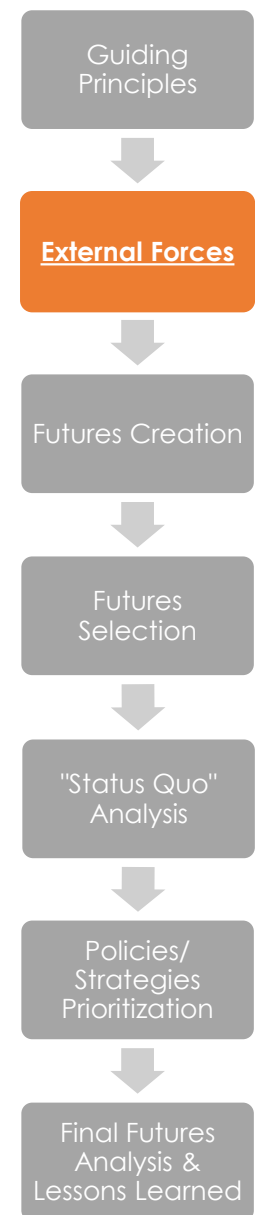
Defining external forces is the second step of the overall *Futures* initiative, which includes not only the creation of potential forces to explore through futures planning but also a suite of policy analyses and a robust project evaluation process. *Futures* is intended to address a range of topics, including but not limited to transportation, land use, economic development, and resilience. Based on a set of guiding principles, stakeholders and the public will identify policies, strategies, and investments that should be aligned with each future to make progress towards our regional vision despite potential headwinds. *Futures* is expected to last through summer 2019, at which point high-performing policies, strategies, and investments will be integrated into the preferred scenario for the 2021 Regional Transportation Plan/Sustainable Communities Strategy (RTP/SCS).

### What is An External Force?

**External forces** are defined as long-time trends or one-time events which affect the Bay Area but for which Bay Area residents and elected officials have little-to-no influence. Examples include advancements in autonomous vehicle (AV) technology or changes to immigration policies – AVs have the potential to significantly change our transportation system and land use pattern, whereas immigration policies may impact our labor force and economic vitality. While typically on the global or national levels, external forces can also include the occurrence of natural disasters, such as earthquakes and wildfires. External forces are inputs to the suite of simulation models that will be used to forecast the future, including Hazus, REMI, UrbanSim Two, and Travel Model Two.

In contrast to external forces:

**Policies or strategies** are defined as specific actions on the state, regional, or local levels that could be taken to improve outcomes for Bay Area residents and businesses. While no individual government agency can implement a cross-cutting suite of policy solutions, it is reasonable to assume that, through the democratic process, Bay Area residents have moderate-to-significant influence in advancing policies for these three levels of government. These could range



**Figure 1:** Primary steps of the Futures process.

from significant shifts in zoning to accommodate a rapidly-growing population to construction of new infrastructure to harden our shoreline against rising sea levels. Similar to external forces, policies and strategies are model inputs, but they will be defined once we have a more complete picture of opportunities and challenges in each future (following the “status quo” analysis phase).

- **Performance measures** are defined as quantifiable conditions in each future, such as employment distribution, racial/ethnic composition, congested delay, interregional volumes, and per-capita greenhouse gas emissions. In contrast to the prior two categories, these are model outputs that are a result of both external forces and policy decisions. For example, employment levels may be affected both by globalization and trade policies (external forces) and by economic incentives and infrastructure investments here in the Bay Area (policies/strategies). Staff intends to leverage the Vital Signs performance monitoring tool to sync historical trends with potential future trajectories under each future.

### Identifying External Forces

This spring, staff will be working with stakeholders and the public to collaboratively construct and prioritize a handful of well-defined futures for analysis. To do so, conditions for each external force will need to be identified. For example, if an external force is fuel prices, each future will need to imagine what fuel prices might be in 2050, given future political and economic forces, to create a consistent and coherent future to study.

To assist in today’s brainstorming of potential forces, staff has developed an initial list of external forces which could be used to define a future in **Attachment A**. We are looking for your feedback on the following questions at today’s meeting:

|   |   |
|---|---|
| 1 | Which of the external forces initially identified do you believe will have the <b>greatest potential impact</b> on the future of the Bay Area?  |
| 2 | Are there external forces – as defined on the prior page – <b>that are not currently listed</b> ? Why is this force <b>particularly influential</b> for the region’s future trajectory? |
| 3 | Are there any external forces currently under consideration are either <b>unlikely to have significant impacts</b> or <b>improperly defined as external forces</b> ?                    |

**Figure 2:** Key questions for RAWG on this item.

### Next Steps






Based on feedback received, staff will revise the list of external forces to frame the development of futures in April and May. Regional stakeholders will be asked to assist in the creation of futures, and expert advisors as well as the public will contribute to narrowing down the list to a handful of divergent futures for further analysis.

**The tentative date for this all-day futures creation workshop is Thursday, April 12.** The event will include expert panelists speaking about some of the key external forces identified below, as well as a collaborative exercise to brainstorm up to a dozen potential futures for further consideration this spring. We look forward to your participation in this upcoming event.

### Attachments:

- Attachment A: Potential External Forces
- Presentation

Potential External Forces

| CATEGORIES  | INPUTS/ASSUMPTIONS<br>(EXTERNAL FORCES)   | INTERMEDIATE OUTPUTS<br>(INPUTS TO HAZUS, REMI,<br>URBANSIM, TRAVEL MODEL)   | POLICY INTERVENTIONS<br>(STRATEGIES)   | PERFORMANCE<br>MEASURES<br>(OUTCOMES)  |
|---|---|--|--|--|
| <br>Politics                   | <ul style="list-style-type: none"> <li>- Political Conditions<br/>(Global and National)</li> <li>- Migration &amp; Trade Policies<br/>(Global and National)</li> </ul>  | not applicable   | <p>Across all categories:</p> <ul style="list-style-type: none"> <li>- Funding Levels<br/>(State, Regional, Local)</li> <li>- Investments<br/>(State, Regional, Local)</li> <li>- Policies<br/>(State, Regional, Local)</li> </ul> | <p>Examples include:</p> <ul style="list-style-type: none"> <li>- Emissions</li> <li>- Mode Share</li> <li>- Commute Time</li> <li>- Displacement Risk</li> <li>- Affordability</li> <li>- Open Space</li> </ul> <p>These will be identified after the finalization of the Guiding Principles.</p> |
| <br>Environment/<br>Resilience | <ul style="list-style-type: none"> <li>- Environmental &amp; Resilience Policies<br/>(Global and National)</li> <li>- Sea Level Rise<br/>(Rate &amp; Inundation)</li> <li>- Natural Disasters<br/>(Type, Location, Severity)</li> </ul>   | <ul style="list-style-type: none"> <li>- Impact of Disasters<br/>(Building Damage, Pop./Jobs Displaced, Revenue Impacts)</li> </ul>  |  |  |
| <br>Economy                    | <ul style="list-style-type: none"> <li>- Tax Framework &amp; Rates<br/>(Global and National)</li> <li>- Population, Jobs, and Econ. Growth<br/>(Global and National)</li> <li>- Fuel &amp; Commodity Prices</li> <li>- Automation of Jobs &amp; AI Capabilities</li> <li>- E-Commerce Adoption Level</li> </ul>   | <ul style="list-style-type: none"> <li>- Regional Population<br/>(Race/Ethnicity, Income, Age)</li> <li>- Regional Employment<br/>(Industry, Unemployment, Wages)</li> <li>- Regional Economic Output</li> </ul> |  |  |
| <br>Land Use                  | <ul style="list-style-type: none"> <li>- External Funding Levels<br/>(National and Private Sector)</li> <li>- Housing Policies (National)</li> <li>- Housing and Workplace Preferences</li> </ul>   | <ul style="list-style-type: none"> <li>- Housing Distribution<br/>(Location, Type, Tenure)</li> <li>- Employment Distribution<br/>(Location, Type)</li> </ul>  |  |  |
| <br>Transportation           | <ul style="list-style-type: none"> <li>- Vehicle and Fuel Policies<br/>(Global and National)</li> <li>- Transportation Breakthroughs<br/>(Drones, Hyperloop, etc.)</li> <li>- Automated Vehicles<br/>(Capabilities, Pricing, Market Share)</li> <li>- Electric Vehicles<br/>(Capabilities, Pricing, Market Share)</li> <li>- Telecommuting Market Share</li> <li>- Sharing Preferences</li> <li>- External Funding Levels<br/>(National and Private Sector)</li> <li>- Interregional Traffic Volumes</li> </ul> | <p>Travel Model Two is run last in the modeling sequence, meaning there are no intermediate outputs.</p>   |  |  |