

Welfare Tax Exemption Program Expansion and Revision

BAHFA Advisory Committee

April 23, 2026



ASSOCIATION OF BAY AREA GOVERNMENTS
METROPOLITAN TRANSPORTATION COMMISSION

Grounding the Program in BAHFFA's Strategic Plan



ASSOCIATION OF BAY AREA GOVERNMENTS
METROPOLITAN TRANSPORTATION COMMISSION

BAHFA Strategic Planning Overview

North Star:

BAHFA was created to raise transformative revenue to meet regional affordable housing needs at scale

Purpose:

Articulate the vision and plan to sustain BAHFA until capitalized at scale

Process:

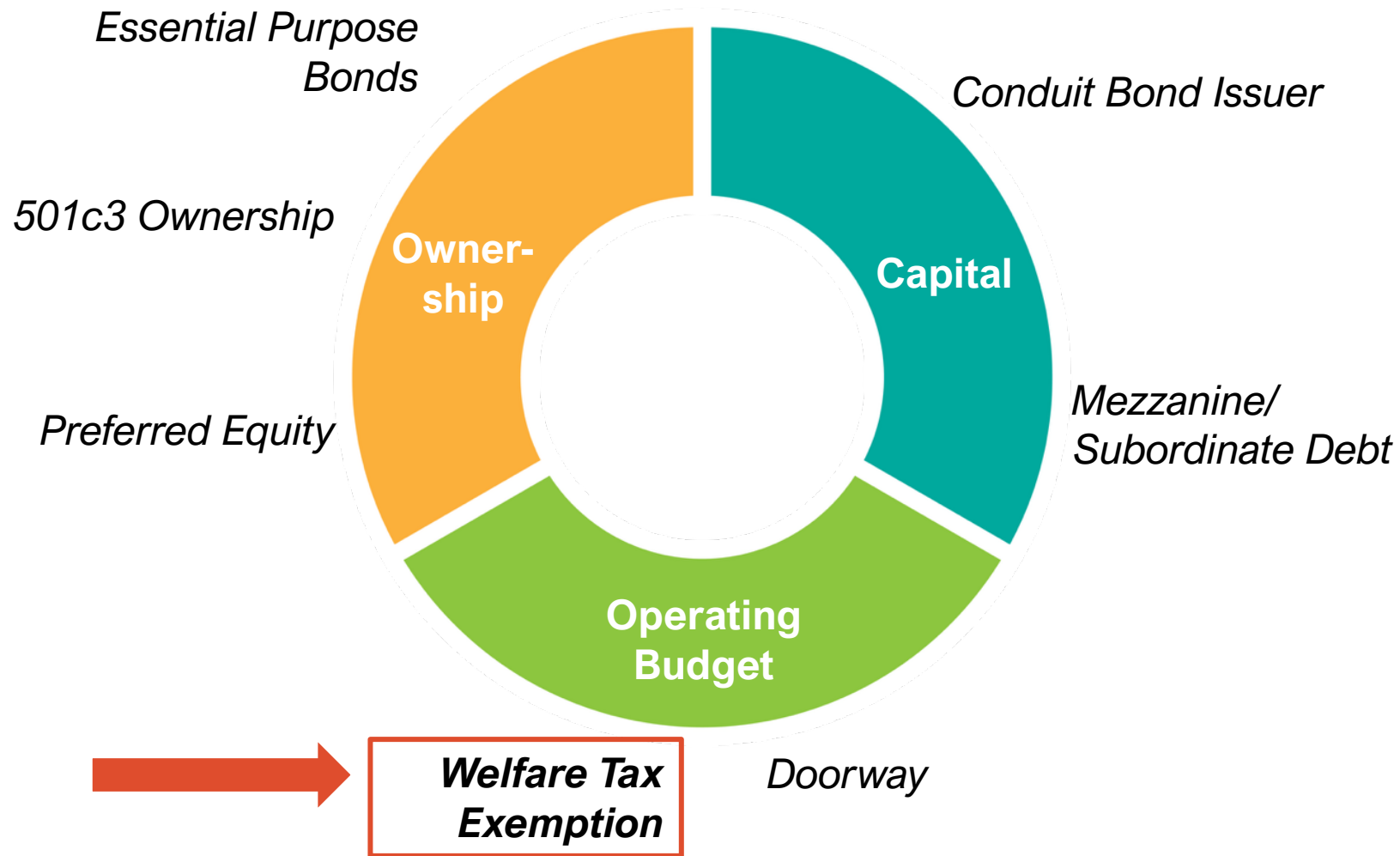
An inclusive process is necessary to maintain, strengthen, and expand coalition of BAHFA supporters



Four Modules:

1. Regional Revenue Measure: Reflections & Framework for Future Ballot Measure
2. Funding Strategy and Financial Sustainability Plan
3. **New Regional Financing Products & Approaches**
4. Regional Housing Programs

Real Estate Financing Roles



Module 3 (New Mixed-Income Program)

Goal: develop a new regional financing program to demonstrate BAHFA's potential and create a stable revenue stream

- **Established Program Principles**
- **Defined Real Estate Financing Roles**
 - Public financing
 - Public ownership
 - Operating support
- **Designed Program: a “kit-of-parts” that can be easily layered to multiply impact**
 - Initial focus on middle or mixed-income, acquisition-rehab projects
 - Incorporate existing Welfare Tax Exemption Program and expand to new construction
- **Multiple rounds of feedback with Committees, Technical Advisory Group and other stakeholders**
- **Due diligence, case studies, modeling and budgeting**

How the Welfare Tax Exemption Works



ASSOCIATION OF BAY AREA GOVERNMENTS
METROPOLITAN TRANSPORTATION COMMISSION

California's Welfare Tax Exemption Rules

- California law* provides an exemption from property tax payments for rental apartments that meet all of the following conditions:
 - Are owned by a charitable organization
 - Are occupied by a lower-income household
 - Have a recorded deed restriction from a public agency restricting occupancy to lower-income tenants
 - Have received a public sector financial investment

*Revenue & Taxation Code Section 214(g)

Welfare Tax Exemption Benefits

- Reduced building operating costs = lower rents (<80% area median income)
- Affordable rents continue for the life of the deed restriction (55 years)
- Affordable rents can prevent displacement that often accompanies building sales to market-rate buyers

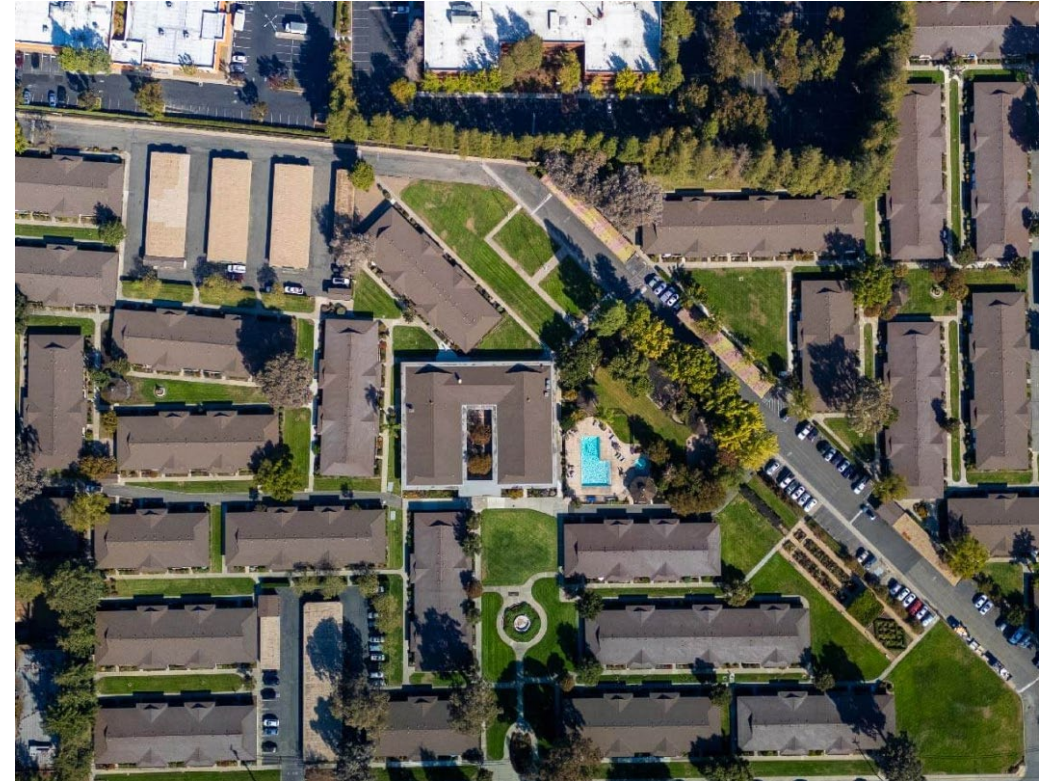
BAHFFA's Existing Program



ASSOCIATION OF BAY AREA GOVERNMENTS
METROPOLITAN TRANSPORTATION COMMISSION

Overview

- Program launched in 2022 in response to a need identified by local jurisdiction and development partners
- Provides public agency support that owners need to qualify for the Welfare Tax Exemption
 - Recorded Deed Restriction
 - \$5,000 Grant Agreement



81 Mayhew Way, Ethos Real Estate

Eligibility

- Eligible Applicants:
 - Developers/Owners with a successful track record of owning and operating comparable affordable projects
- Eligible Projects:
 - Existing rental buildings with 4 or more units
 - Occupied and unrestricted
- BAHFA Restriction:
 - All or percentage of units restricted at 80% AMI for 55 years



500 King Drive, BRIDGE Housing

Tenant Protection Measures

- Proposed restricted rents must be at least 10% below market
- Displacement is prohibited, regardless of income
- Existing local Rent Control and Just Cause Eviction ordinances must continue
- Annual rent increases where rent controls do not apply capped at the increase in area median income (AMI) or 4%, whichever is less
- Rents for rent-burdened tenants should be reduced over time, as financially feasible

Coordination and Enforcement

- BAHFA staff consults with local jurisdiction housing staff prior to project approval
- The State Board of Equalization and county assessor's office approve and monitor property tax exemptions
- Failure to comply means owners must pay property taxes
- Owners must annually report on compliance with regulatory agreement and tax exemption status to BAHFA

Projects To Date

Project / Developer	Jurisdiction	County	Funding	Affordable Units	Total Units
16455 E. 14th St. / Eden Housing	Ashland	Alameda	\$5,000	23	24
482 40th St. / Urban Core Preservation	Oakland	Alameda	\$5,000	5 (minimum)	24
1848 25th St. / Urban Core Preservation	Oakland	Alameda	\$5,000	5 (minimum)	24
763 Blossom Way / Urban Core Preservation	Hayward	Alameda	\$5,000	12 (minimum)	58
500 King Drive / BRIDGE Housing	Daly City	San Mateo	\$5,000	99 (minimum)	195
1919 Fruitvale Avenue / Jonathan Rose Companies	San Jose	Santa Clara	\$5,000	330	331
81 Mayhew Way / Ethos	Walnut Creek	Contra Costa	\$5,000	313 (minimum)	418
400 Canal Street / Tesseract Capital Group	San Rafael	Marin	\$5,000	94 (w/additional units to convert over time)	99
Totals	7 Jurisdictions	5 Counties	\$40,000	881	1,173

Lessons Learned

- Low-cost, high-impact program:
 - \$40,000 investment has preserved at least 881 units across 8 projects over 4 years
 - Module 4 Program Evaluation:
 - 47% of units located in Equity Priority Communities
 - 43% of funding to BIPOC-led developers
- Diversity of building sizes and geographies achieved, but not all prospective projects meet eligibility requirements
 - Building sizes range from 24 units to 418 units
 - 5 counties
- Financial feasibility supported by:
 - Minimal rehabilitation needs
 - Existing rents between 60-80% AMI to support conventional debt
 - Applicants have access to private equity

Lessons Learned (continued)

- Tenant protection measures have ensured mission-alignment of projects/applicants
- Importance of coordination with local jurisdictions to confirm sufficient public benefit
- Importance of coordination with local county assessor to ensure ultimate approval of the welfare tax exemption



400 Canal Street, Tesseract Capital Group

Proposed Revisions to BAHFFA's Program

Expansion to Include New Construction

- Eligible projects under the current program are limited to preservation of existing, occupied buildings
- Since program launch, several developers have expressed interest in using the welfare tax exemption as a financing tool for new construction of affordable housing
- Staff propose revisions to terms to:
 - Include new construction as an eligible project
 - Refine regulatory and submission requirements to account for minor distinctions between preservation and new construction projects
 - Corresponding change of the program name to **Welfare Tax Exemption Preservation Program** or “WTEP”

Overview of Proposed Revisions

Goal	Topic Area	Applicable Revision to Term Sheet
Expansion	New Construction	Revise definition of eligible projects to include new construction
	Small Projects	Eliminate 4-unit minimum
	Mixed-Use Projects	Eliminate minimum residential square footage
	Substantial Rehab Projects	Increase allowable temporary relocation from 90 days to 180 days
Clarification	Adding Affordable Units Over Time	Add that affordable units may be added upon income-certification of existing occupant
	Relief of Severe Rent Burden	Clarify that owner must propose a program to reduce rents for low-income residents spending 50% of income or more on rent
	10% Discount to Market	Clarify that initial rents for each protected household must start at 10% below market, including upon turnover or when a unit is newly restricted
Financial Sustainability	Introduction of Fee Schedule	Add the fees will be charged according to program's adopted fee schedule

Thank you



ASSOCIATION OF BAY AREA GOVERNMENTS
METROPOLITAN TRANSPORTATION COMMISSION