

# MTC's Community Action Resource and Empowerment (CARE) Program: Power-Building and Engagement (Pb+E)

Policy Advisory Council

September 23, 2025

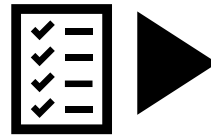


# CARE Funding Categories



**Project Development** to Advance Community Based Transportation Plan (CBTP) Project(s)  
(Category 1) OBAG: \$13M

- Advancing a CBTP concept to a fundable, viable project.
- Technical Assistance for Project Development (i.e preliminary engineering, environmental work)



**Implementation** of High-Priority Neighborhood Project(s)  
(Category 2) \$6.5M

- Utilizing a Participatory Budgeting Process or similar robust engagement
- Examples: Bus stop enhancements, quick-build pedestrian/bicycle/transit improvements



**Community Power-Building and Engagement (Pb+E)**  
(Category 3) \$3.5M

- “Power” is the ability to define reality for yourself and for others.
- Technical Assistance and Capacity Building for/from/with community based organizations through direct grants and learning action lab.

*Community-level Impact Advancing Regional Goals*

# How: Power-building and Engagement (Pb+E)



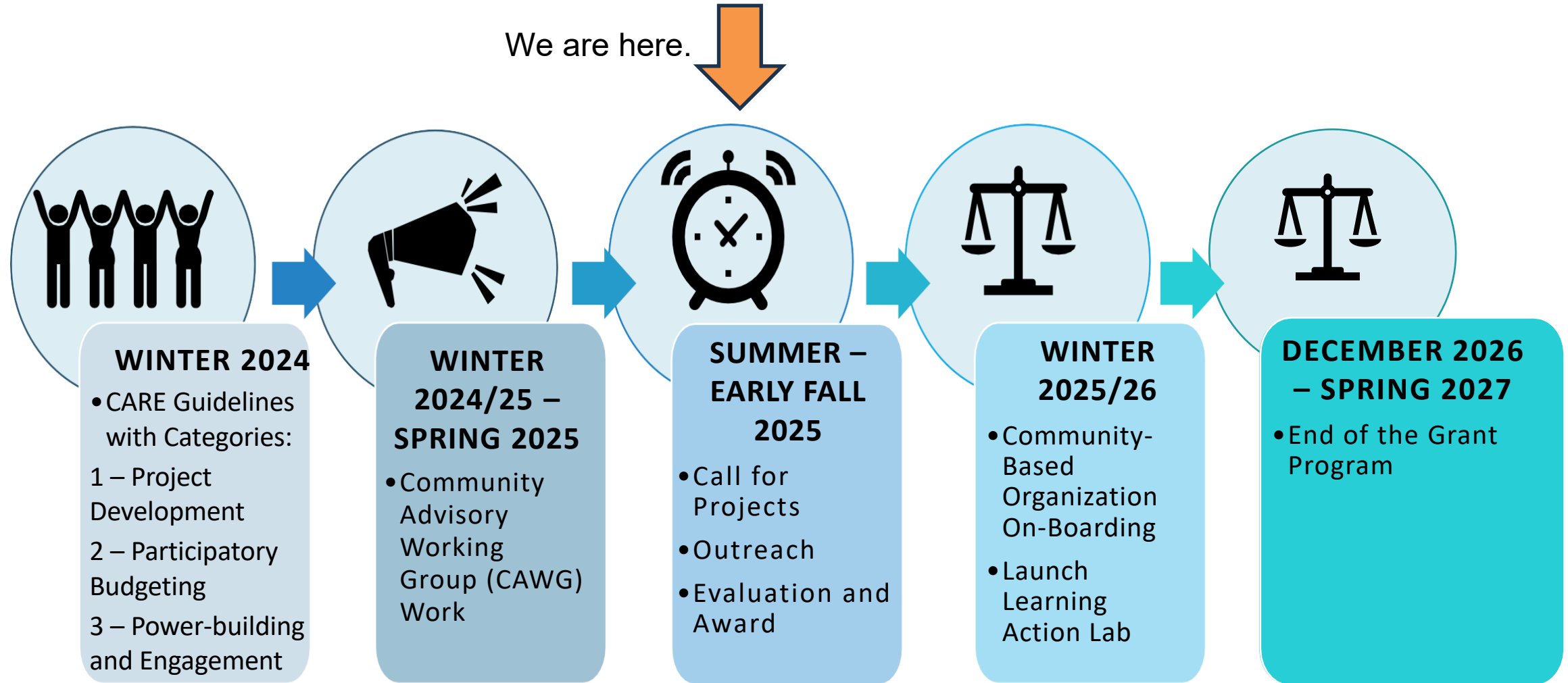
- Leadership and Capacity-building in Transportation and Housing
- Multi-Sector Partnerships and Collaboration Development
- Community Solutions

# What: Eligible Project Categories

- **Capacity Building** (\$50K/project)
  - Civic leadership development programs, youth outreach and training, multilingual community planning, disability access and engagement, community-based organization regional network
- **Multi-sector Partnerships and Collaboration Development** (\$100K/project)
  - Community-Agency bridge building, community dialogue and mediation hub, collaborative needs assessment
- **Community Solutions** (\$250K/project)
  - Cultural placemaking, collaborative housing and transportation pilots

Approximately **\$1.3 million** available in grant funding. In addition, technical assistance and support provided for all categories.

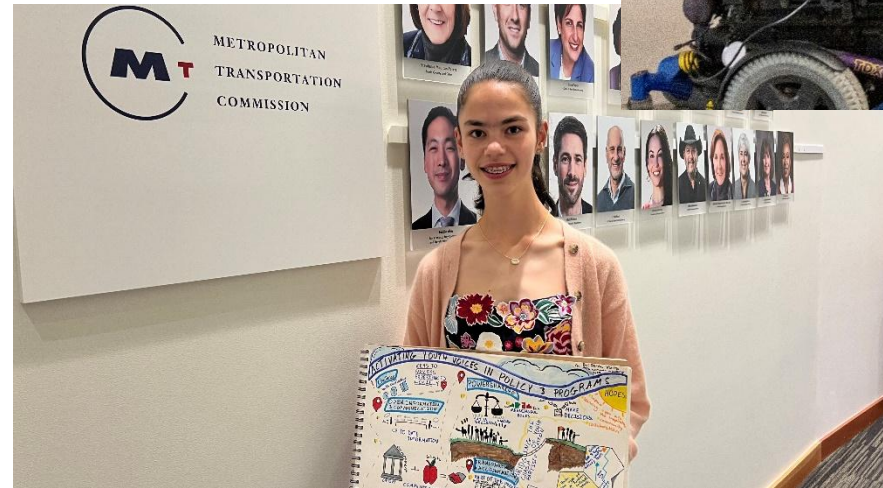
# Pb+E Approach and Process





# Applicant and Project Eligibility

- Community-based organizations (CBO) 501 (c) (3) nonprofit serving people in MTC's Equity Priority Communities or similar
- CBOs without 501(c)(3) designation may partner with a fiscal sponsor
- Non-profit/CBO with experience working on housing, transportation, or climate issues



# Scoring Criteria Includes:



# Application Steps and Key Milestones



▲ MTC Programming and Allocation Committee: November 12, refer Draft "Program of Projects" to Commission  
▲ MTC Commission: November 19, action item to approve on "Program of Projects"