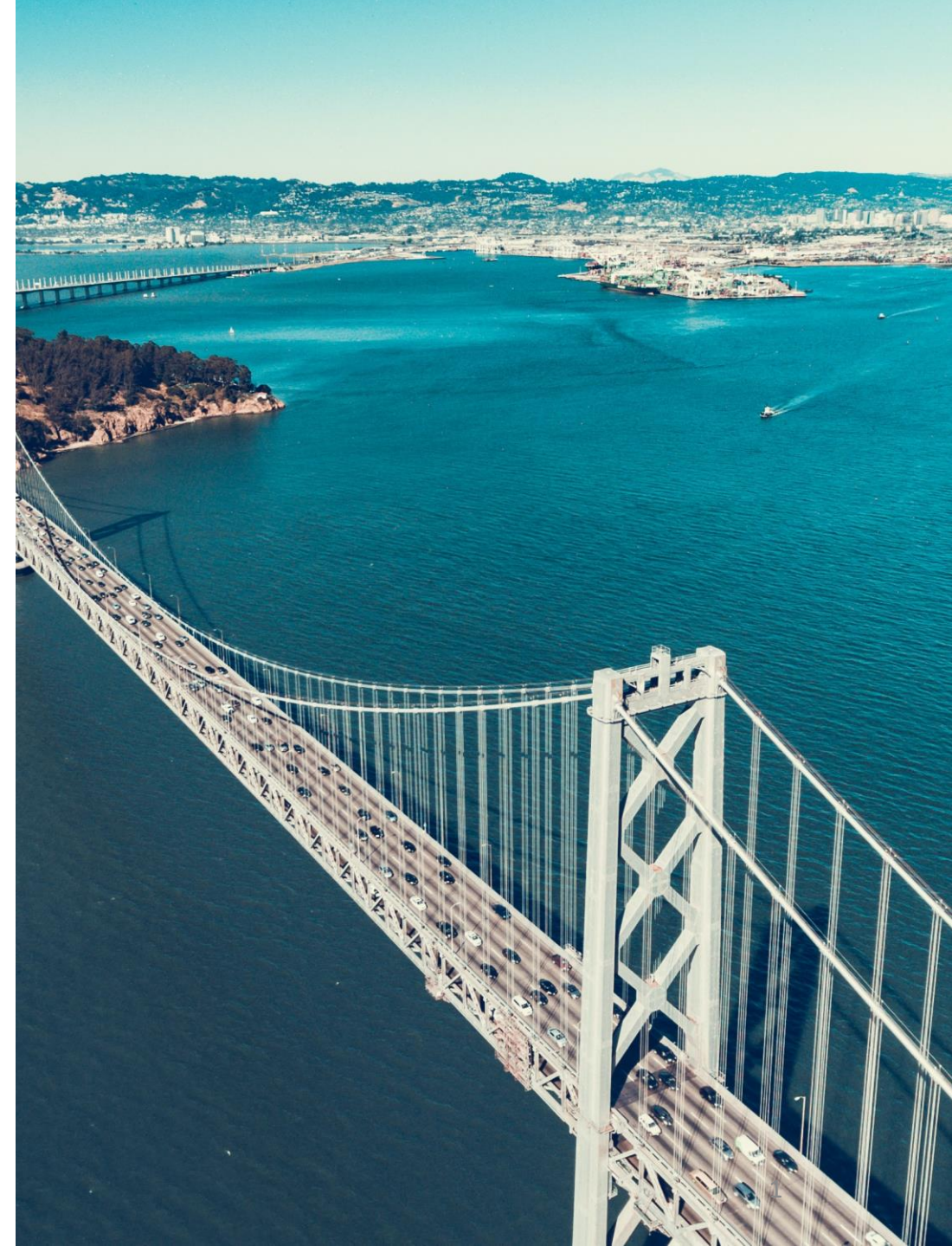


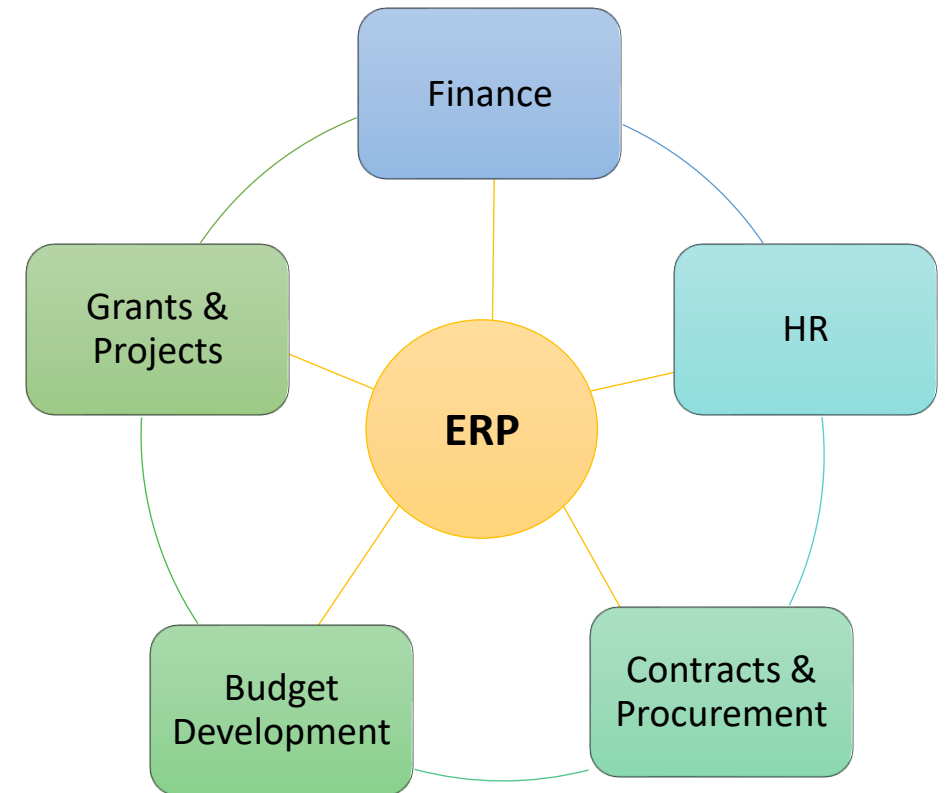
ERP Program Update

Metropolitan Transportation Commission
May 14, 2025



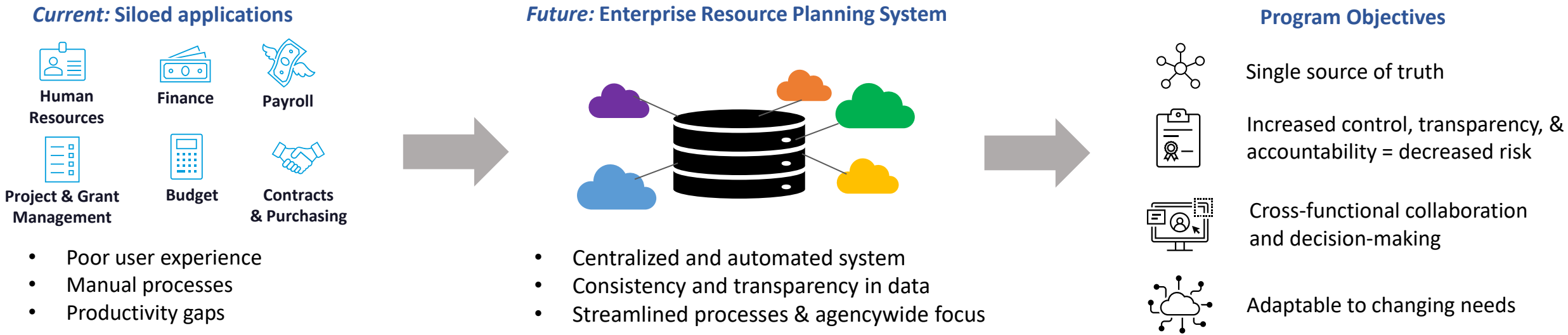
What is an ERP?

- Enterprise Resource Planning (ERP)
System: a software platform that integrates various business functions (such as finance, HR, contracts, projects, grants) into one complete system
- Central feature is a **shared database**
 - Employees in different sections can rely on the same information

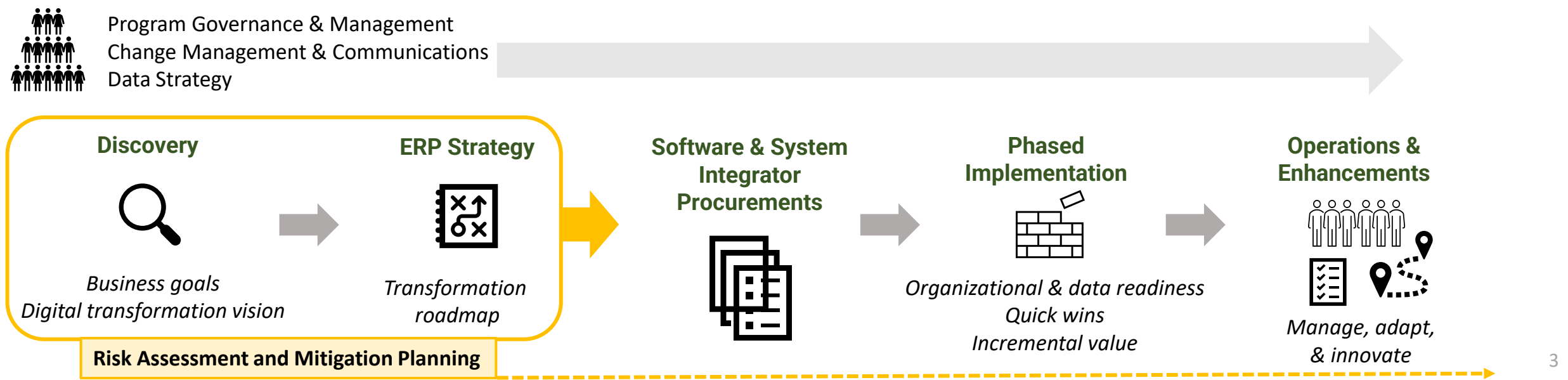


ERP Implementation: Approach

Where we're going



How we get there



Key Accomplishments Since June 2024

ERP Strategy & Planning Stage

July - Sept 2024	<ul style="list-style-type: none">• System Integrator Contract Executed
------------------	---

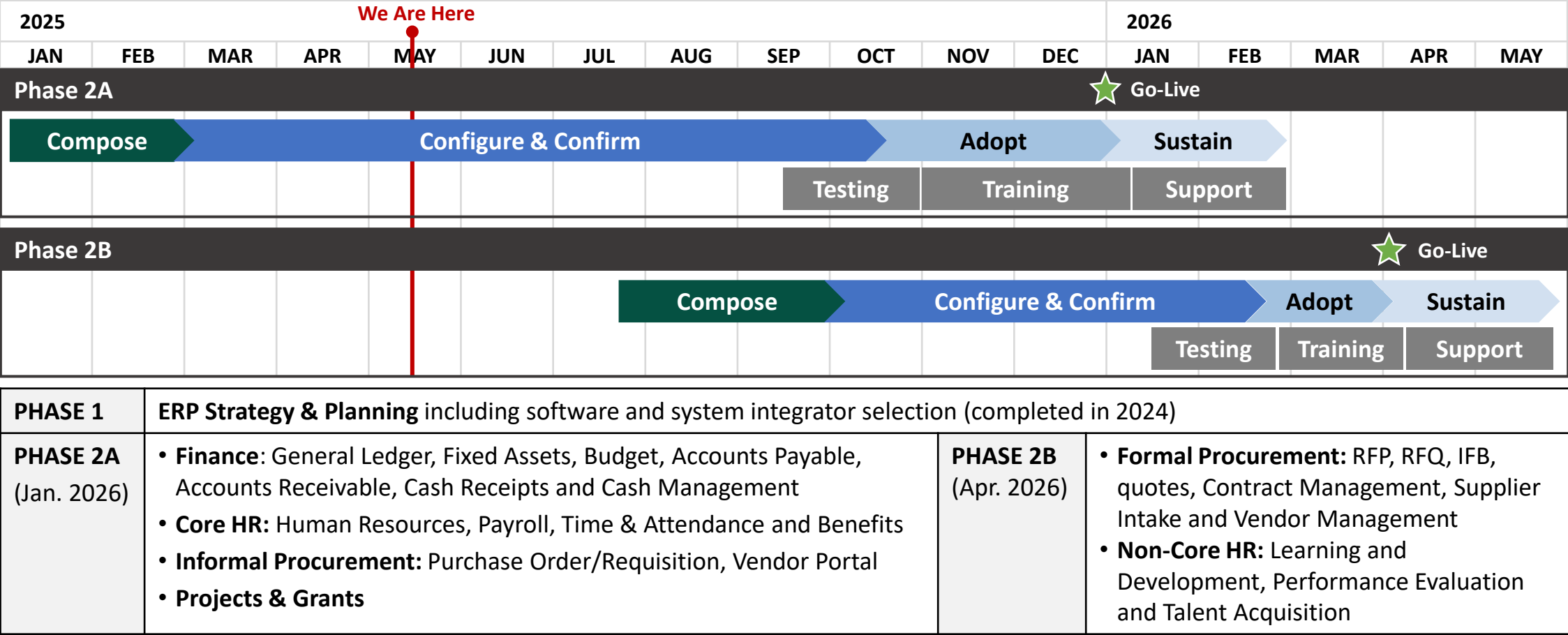
Compose Stage

Sept 2024 – Feb 2025	<ul style="list-style-type: none">• Oracle Implementation Kick-off with Mythics, System Integrator• 147 Discovery & Design sessions with 80+ Subject Matter Experts (SMEs) from MTC
	<ul style="list-style-type: none">• 123 Business Process Maps for current state by Slalom, Strategic Advisor• Communication with MTC Staff (Presentations, email, video, SharePoint site)

Configure Stage

Feb – May 2025	<ul style="list-style-type: none">• Data Migration Strategy & Plan• Preliminary Training Strategy• MTC Requirements and Key Design Decisions validated• Organizational Change Management Plan
	<ul style="list-style-type: none">• Oracle Demonstrations using MTC configuration and subset of MTC data• Change Champion Network Established• Continued Communication with MTC Staff• Change Impact Assessment

ERP Implementation Roadmap



ERP CAPITAL BUDGET
FY 2023-24 through FY 2025-26
(in thousands)

Description	Approved Budget FY 23-24 - FY 25-26	Amount Spent to Date (as of May 5, 2025)
<i>Capital Costs</i>		
Strategy and Change Management Consulting	\$7,132	\$3,971
ERP Software and System Integrator	\$9,002	\$2,110
MTC Staff	\$9,703	\$3,937
Total Capital Costs	\$25,837	\$10,018