

Background on MTC and ABAG **Wildfire Efforts**



ASSOCIATION OF BAY AREA GOVERNMENTS
METROPOLITAN TRANSPORTATION COMMISSION

**MTC Planning Committee and
ABAG Administrative Committee**

July 11, 2025

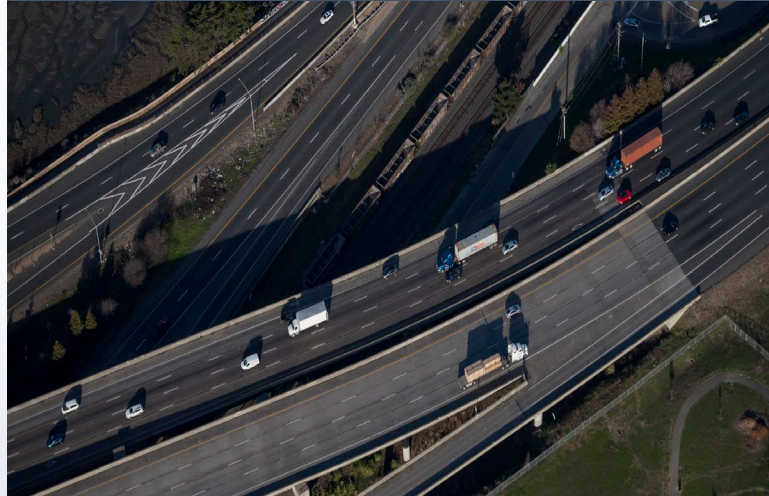
Wildfires impact housing, transportation, and climate goals.

Housing



Wildfires challenge the region's goal to produce more homes.

Transportation



Wildfires strain transportation systems in California causing infrastructure damage, road and transit closures, and evacuation challenges.

Climate



Wildfires are a growing share of greenhouse gas emissions, reversing emissions reductions and air quality progress.

MTC & ABAG Wildfire Initiatives



Past Efforts

2017: Wildfire White Paper

2021: Wildfire & Housing
Technical Assistance Cohort

2024: Plan Bay Area 2050+
Home Hardening Needs Analysis

Ongoing: MTC Transportation
Disaster Recovery Program



Current Efforts

Research: Updating
existing resources

Deliverables: Webinar,
Resource Guide



Future Work?

Potential Resources:
Webinars, analysis, resource
guides

Potential Topic Areas:
Land use planning, home
hardening and building
codes, evacuation

*Note: resource constraints
and staff expertise may
limit future efforts*



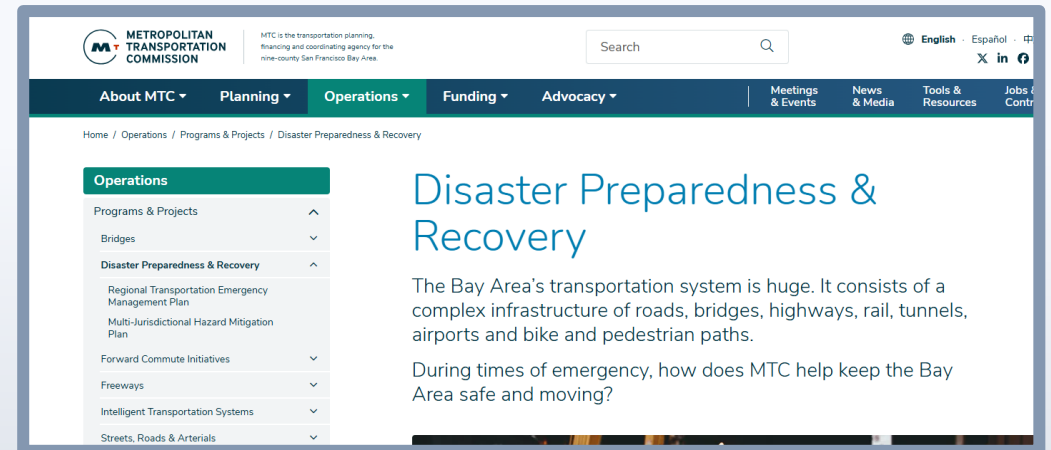
Past ABAG Wildfire and Ongoing MTC Preparedness Programs

Programs Focused on Advancing Wildfire Resilience and Transportation Preparedness:



MTC-ABAG Regional Planning Program

- Provided technical assistance on integrating wildfire risk into resilience and housing planning.



MTC Transportation System Safety and Reliability

- Coordinates multi-agency efforts to manage transportation during emergencies, ensuring clear evacuation routes and efficient access for emergency responders.

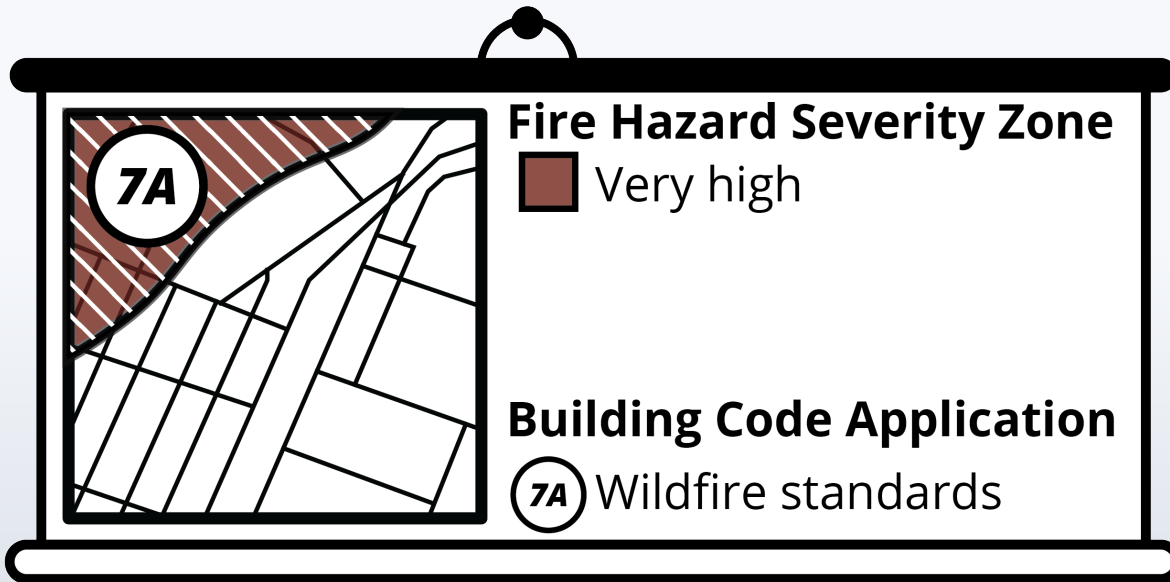
Evolving State Policies Are Shaping Local Housing and Wildfire Planning



Recent state laws that are now taking effect will impact how jurisdictions plan for and build in wildfire-prone areas:

- Fire Hazard Severity Zone Mapping (AB 642)
- Building Code Updates (SB 63)
- Fire Safe Regulations (SB 901)

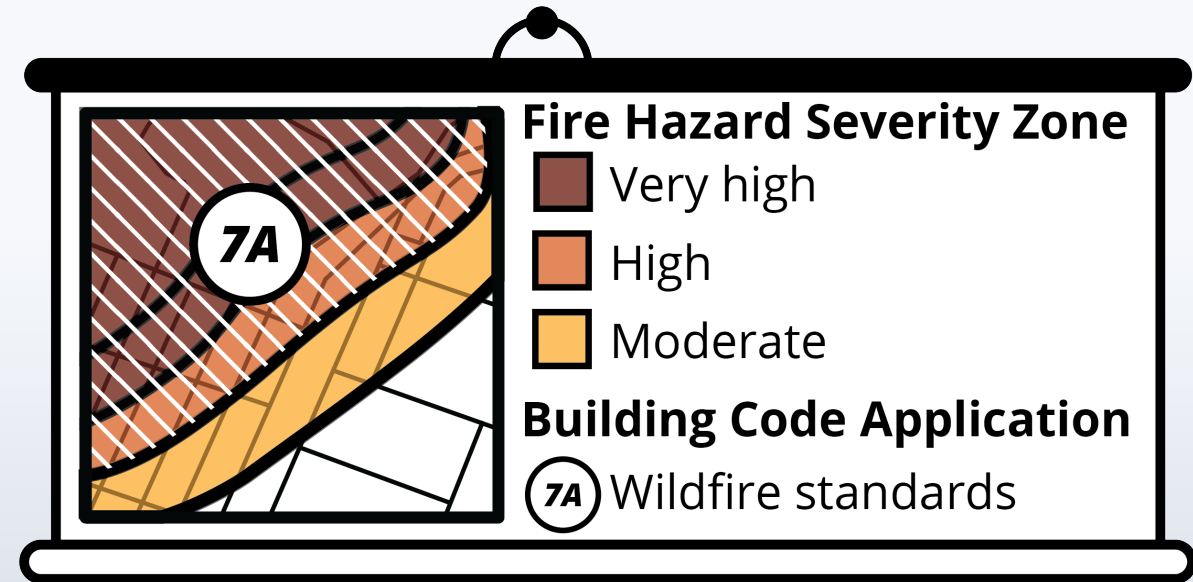
Recent changes expand where stricter building standards apply and how wildfire risk is mapped locally.



Prior Condition, 2008-2024

Wildfire Mapping – Previously only the very high zone was mapped in local areas.

Building Code – The wildfire-resistant construction standards (Chapter 7A) were only applied to the very high zone in local areas.



Future Condition, 2025 Onward

Wildfire Mapping – Now includes high and moderate zones in local areas. Updated mapping methods have also changed prior mapped severity levels.

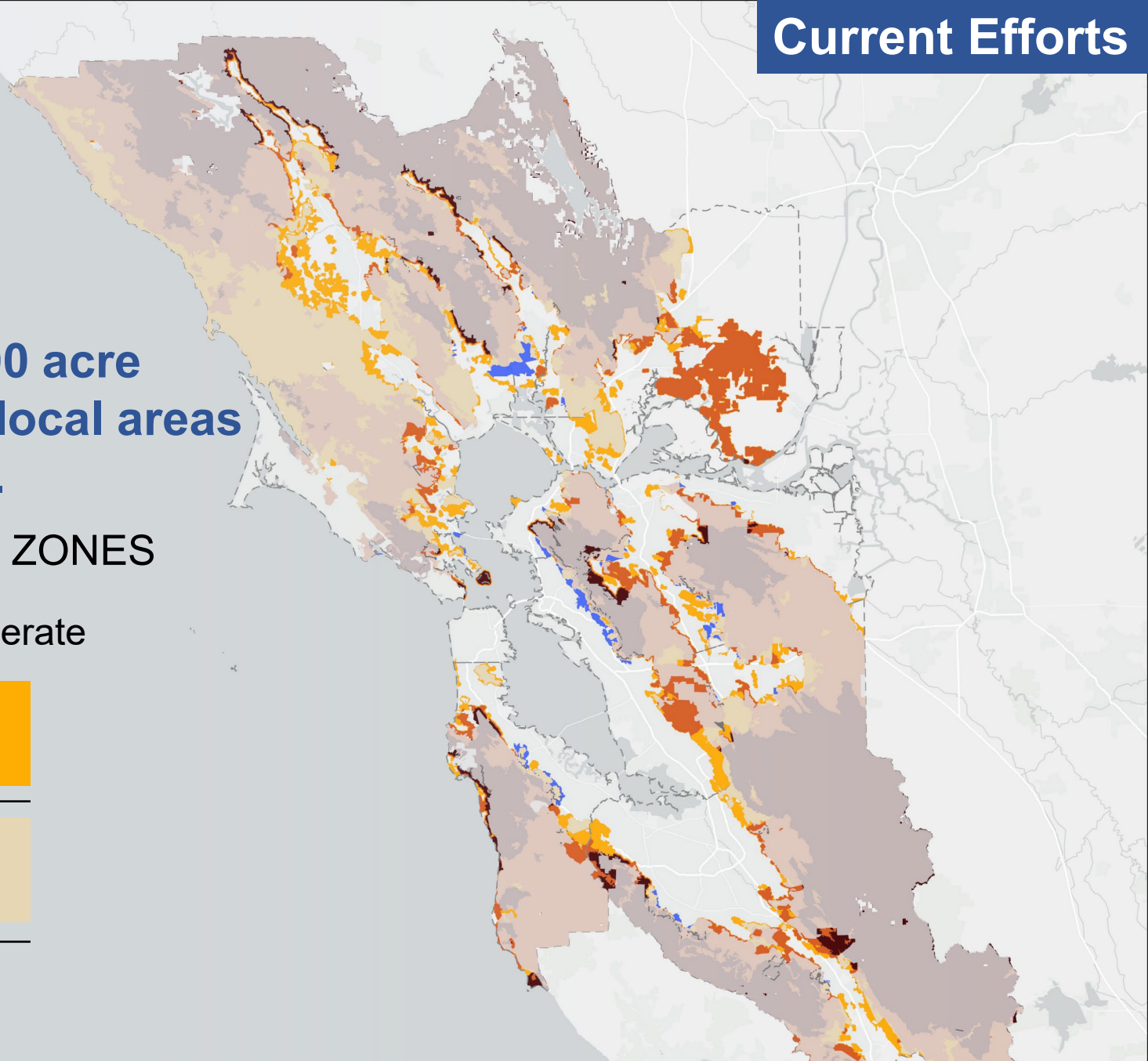
Building Code – Chapter 7A has expanded to the high zone in local areas. The state is studying its application in the moderate zone.

New Fire Hazard Severity Zone Maps

Across the region, there is a 415,000 acre increase in mapped wildfire risk in local areas compared to the older (2008) maps.

LEGEND: 2025 FIRE HAZARD SEVERITY ZONES

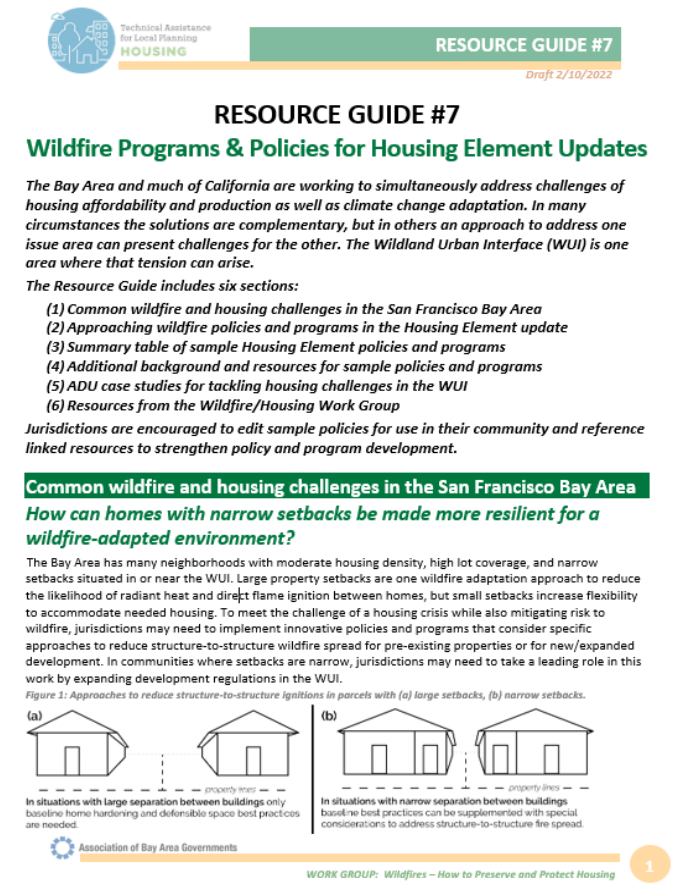
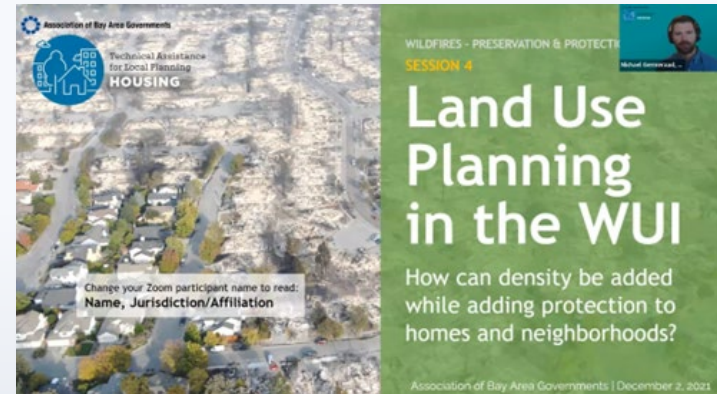
	Very High	High	Moderate
New areas covered by 2025 maps	<div></div>	<div></div>	<div></div>
Area covered by 2008 & 2025 maps	<div></div>	<div></div>	<div></div>
Area covered by 2008, but not 2025 maps	<div></div>		



Webinar Slated for Late Summer 2025: Updates to wildfire & housing resource guides

A webinar and associated resources will provide updates to the 2021 Wildfire and Housing Technical Assistance Cohort, including:

- **Updated Resource Guide** on building codes, wildfire maps, and state legislation.
- **Exploring paths forward** for home hardening programs.
- **Bring back wildfire experts** to share the latest insights.



Figures: Snapshots of 2021 webinar and resources guides that will be revisited in 2025.

Options to Explore Going Forward

Note: future efforts will be contingent on agency resources and expertise.

- A. Home Hardening Program Review**
- B. Integrate Wildfire Considerations into Objective Design Standards**
- C. Wildfire Funding Landscape**
- D. Other Potential Topics for Exploration**
 - Evacuation Planning, Evacuation-Related Capital Improvements, Vegetation Management, Insurance Market Dynamics, etc.

COMMITTEE DISCUSSION QUESTIONS:

- What wildfire risk reduction actions does your community need support with?
- With limited resources, where might MTC-ABAG regional support be most helpful?

