



Photo: Karl Nielsen

What Is the Plan?

Plan Bay Area 2050+ is the regional long-range plan for transportation, housing, economic development and environmental resilience for the nine-county San Francisco Bay Area, currently in development by the Metropolitan Transportation Commission and the Association of Bay Area Governments. It is scheduled for completion in early 2026.

What Is the Vision?

Ensure by the year 2050 that the Bay Area is affordable, connected, diverse, healthy and vibrant for all.

AFFORDABLE

All Bay Area residents and workers have sufficient access to housing options they can afford.

CONNECTED

An expanded, well-functioning, safe and multimodal transportation system connects the Bay Area.

DIVERSE

The Bay Area is an inclusive region where people from all backgrounds, abilities, and ages can remain in place with access to the region's assets and resources.

HEALTHY

The region's natural resources, open space, clean water and clean air are conserved.

VIBRANT

The Bay Area region is an innovation leader, creating job opportunities for all and ample fiscal resources for communities.

How Do We Get There?

Plan strategies guide growth and deliver on shared regional and local priorities through 2050.

TRANSPORTATION STRATEGIES

Operate and maintain the existing system ("Fix It First"), create healthy and safe streets, and expand and enhance transit.

HOUSING STRATEGIES

Produce, preserve and protect housing at all price points, especially affordable housing.

ECONOMY STRATEGIES

Create economic mobility for all residents and improve job locations.

ENVIRONMENT STRATEGIES

Mitigate hazards, create more parks and open spaces, and reduce climate emissions.

Key Outcomes by 2050 If Strategies Are Implemented

AFFORDABLE

-25% housing and transportation cost burden for **all households**

-50% housing and transportation cost burden for **low-income households**

CONNECTED

+45% share of all **households near frequent transit**

+40% **jobs** accessible via **transit, biking or walking**

DIVERSE

+30% **homeownership rate** for low-income households

HEALTHY

+110% share of people **commuting via transit, biking or walking**

+25% publicly accessible **open space** acres per capita

VIBRANT

+60% per capita **Gross Regional Product**, driven by a strong, recovered Bay Area economy

Meets 2035 GHG Emissions Target

Cars and Light Duty Trucks

SB 375

(Not Including Fleet Efficiency Gains)

-21%

-19% PER CAPITA GHG Reduction Target

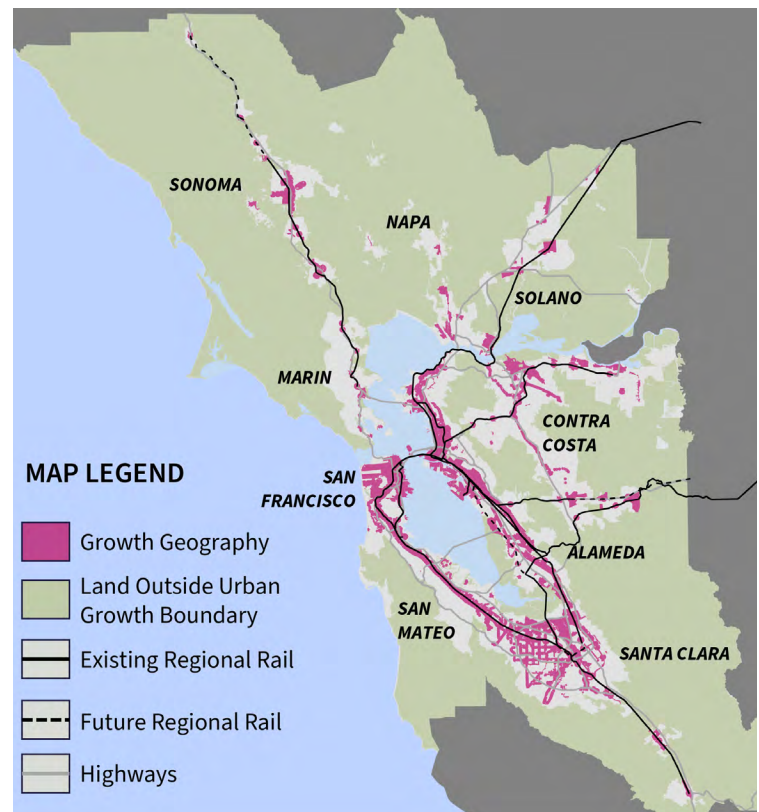
All Vehicles

(Including Fleet Efficiency Gains)

-40%

Growth Pattern

Plan Bay Area 2050+ focuses **95% of new households** and over **70% of new jobs** into Growth Geographies — places close to transit that are prioritized for future growth in the long-range plan.



Stay Involved!

Visit PlanBayArea.org to learn more.