

Metropolitan Transportation Commission Programming and Allocations Committee

December 13, 2017

Agenda Item 2e

Program Updates: Regional Measure 2 Capital Program

Subject: Semi-annual update on the Regional Measure 2 (RM2) Capital Program

Background: **RM2 Capital Program**

RM2 was passed by the voters in March 2004 and the Commission began allocating funds in July 2004. The attached staff presentation is the semiannual report for the RM2 capital program.

Allocation/Expenditure Status

The RM2 Capital Program has a programmed amount of approximately \$1.6 billion, with an additional \$74 million from unneeded financing cost coverage programmed to projects by the Commission in December 2016. As of November 2017, MTC has approved more than \$1.5 billion in capital allocations, of which over \$1.3 billion has been expended.

Project Status

The majority of projects are completed or are on track and under construction. Highlights of this report include the opening of SMART in summer 2017 and the opening of the Fairfield/Vacaville Intermodal Train Station in November 2017; the delivery of a second new ferry vessel to the Water Emergency Transportation Authority and the start of construction for its expanded downtown San Francisco terminal; and the beginning of systems testing for e-BART. The Transbay Terminal is making major construction progress toward the completion of Phase 1, with initial Muni service to begin by year's end. AC Transit East Bay Bus Rapid Transit continues its major construction phase, though expected project delivery has been further delayed to late 2019. I-880 North Safety Improvements in Oakland have made progress, with the completion of the 29th Avenue Overcrossing. Caltrain Electrification contracts have been issued full notice-to-proceed, and a groundbreaking event was held in June.

Staff continues to work with sponsors to move projects with remaining unallocated funds toward construction. Overall, staff continues to monitor projects to ensure continued progress.

Issues: None

Recommendation: Information

Attachments: Presentation Slides

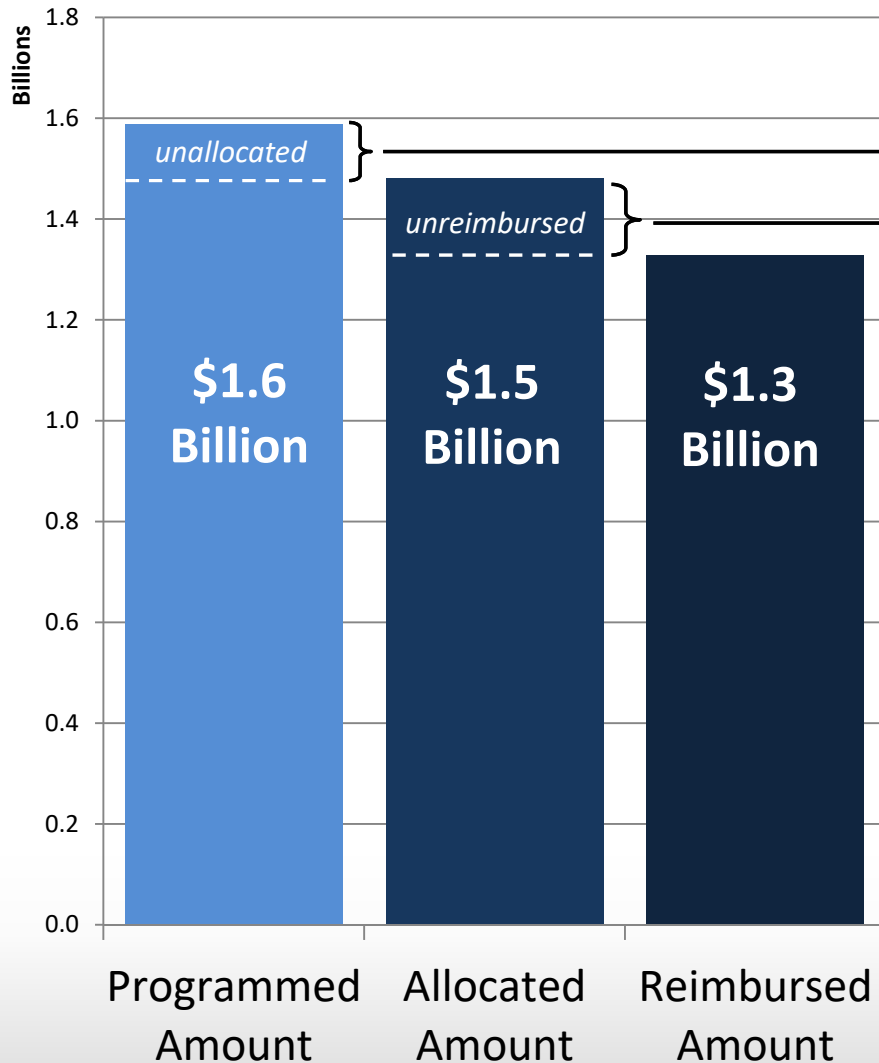
Regional Measure 2: Capital Program Update



METROPOLITAN
TRANSPORTATION
COMMISSION

Programming and Allocations
Committee
December 13, 2017

Capital Program Summary



The remaining \$108 million not yet allocated includes the following projects:

- BART Cars* (\$40M)
- Bay Bridge Forward* (\$16M)
- North South Greenway - Marin (\$15M)
- Clipper* (\$13M)
- I-580 Transit Improvements (\$12M)
- BART/Muni Connection (\$3M)
- Richmond Parkway P&R (\$2M)

The \$152 million not yet reimbursed includes these projects entering, under, or completing construction:

- AC Transit BRT (\$39M)
- BART Extension to Warm Springs (\$17M)
- SF Ferry Terminal Expansion (\$18M)
- SMART (incl. Larkspur) (\$17M)
- Ferry Vessels incl. Richmond (\$11M)
- I-680 HOV Lane Connector (\$6M)
- Regional Express Lanes (\$5M)
- Fairfield/Vacaville Train Station (\$5M)
- E-BART (\$5M)
- Bay Bridge Forward* (\$4M)
- Safe Routes to Transit projects (\$4M)

*Project funding added to RM2 program in December 2016

Program Assessment

- Majority of projects are “On Track” and “Under Construction”, or completed
- MTC monitors projects to minimize risk, provide opportunities for meaningful scope changes, and address funding shortfalls.
- MTC works with sponsors to provide direction, secure additional funds, or phase/down-scope the projects.
- Local construction market strong; could lead to cost escalation.

SMART

Operations Underway

- Ribbon-cutting on Aug. 25, 2017
- Larkspur design/build construction contract awarded; early work underway



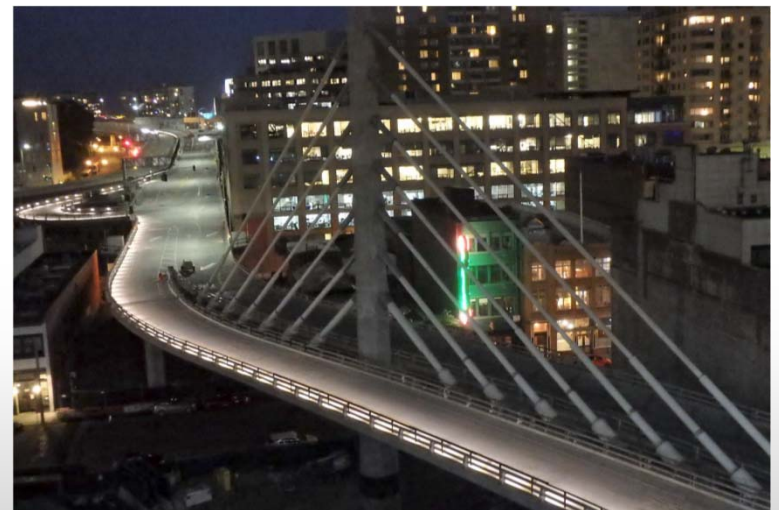
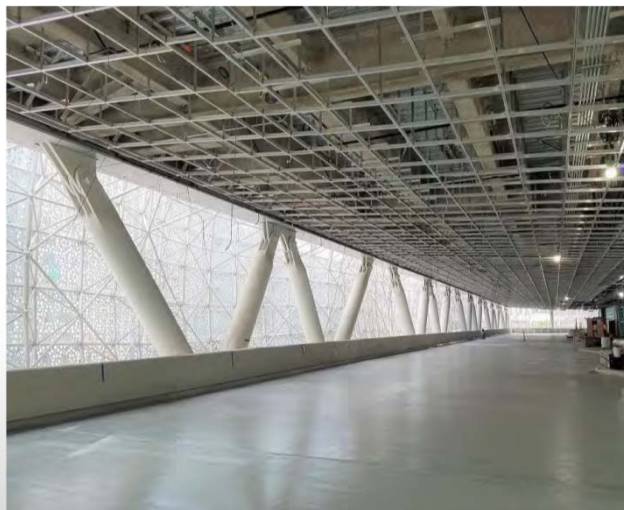
Fairfield/Vacaville Intermodal Train Station

- Station now open
- Full Capitol Corridor service began on November 13



Transbay Terminal

- Construction Progress:
 - Walls, decks, interior, landscaping work ongoing
 - Bus ramp structures nearing completion
 - Bus Storage Facility construction underway
- Muni #5 bus service to begin by end of December, bus deck transit operations planned to begin Spring 2018



eBART

- Trackwork, System, and Facility Finishes construction is ongoing – testing is underway
- Vehicles have all been accepted
- Transfer platform/guideway and maintenance facility/parking lot contracts are completed
- Opening expected mid-2018



BART Cars

- Currently seeking California Public Utilities Commission approval to begin passenger service with initial 10 new cars
- Approximately 16 cars scheduled to arrive monthly starting in 2018 until all 775 cars delivered under current contract with Bombardier
- An additional 306 cars planned for a second contract
- BART staff will give full project update to this committee in coming months



Caltrain Electrification

- Full notices to proceed issued for Design/Build and vehicle procurement contracts
- Final design underway
- Groundbreaking event held in June



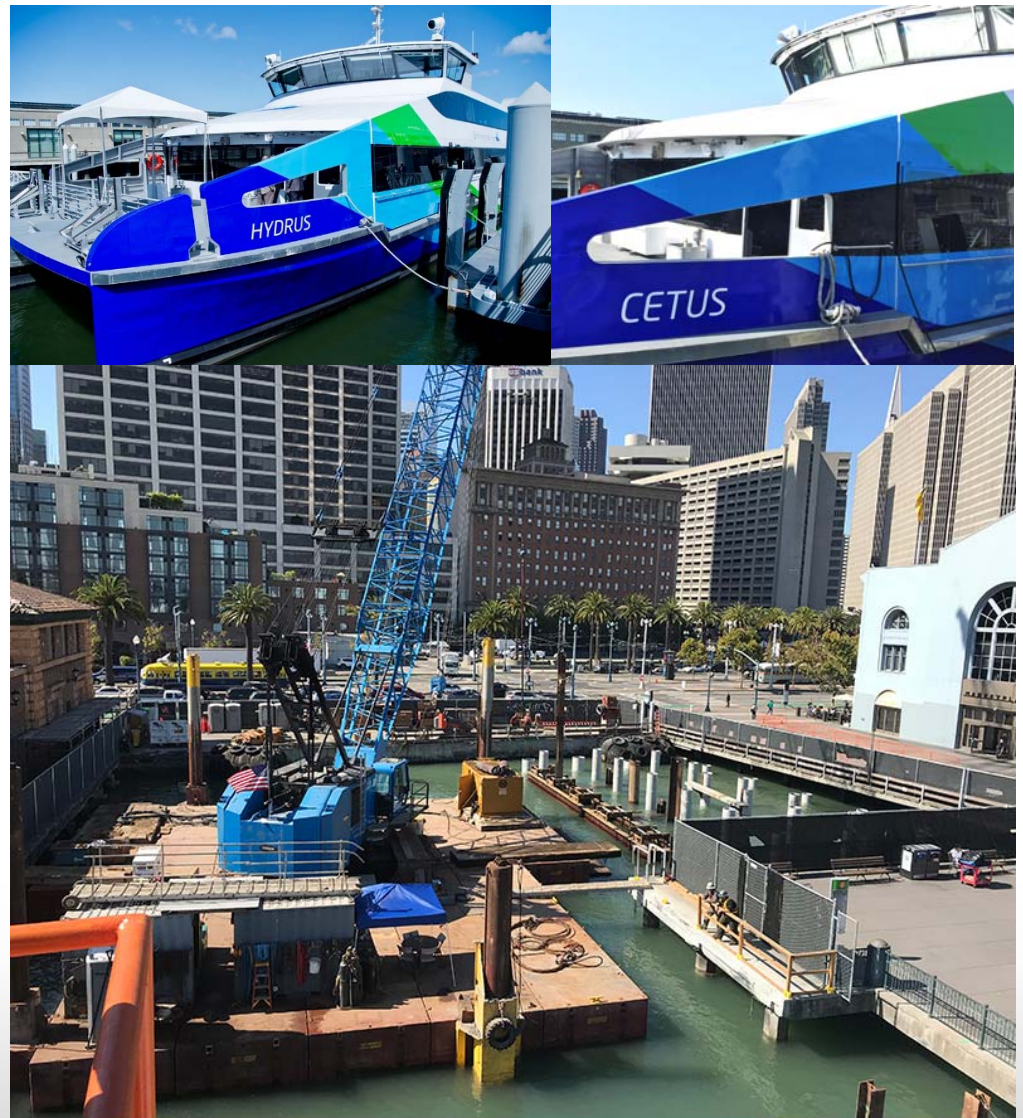
AC Transit East Bay BRT

- Advanced utilities, off-street parking, traffic mitigation packages completed
- Major construction is underway – signals, utilities, sidewalks, curbs
- Project funding gap is likely based on updated risk assessment; AC Transit staff assessing funding need and strategy
- Revenue service target now late 2019



Ferry Projects

- Two new vessels (*Hydrus* and *Cetus*) are now in service
- Richmond vessels construction underway; Richmond Terminal groundbreaking in November
- SF Terminal expansion construction underway; current focus dredging and pile driving



I-80/I-680/SR-12 Interchange – Solano County

- Initial Construction Package (WB 80 – WB 12 Connector): Open for use
- Utility relocations complete
- PS&E being prepared for subsequent construction packages
 - Package 2: Red Top Road Interchange
 - Package 3: I-80/I-680 Interchange



I-880 North Safety Improvements



- Reconstruction of I-880 in Oakland from 29th Ave to 23rd Ave
- Total cost: \$102M
- Construction approximately 60% complete
- Reconstruction of 29th Ave overcrossing completed, partially open to traffic
- Current focus on new off-ramp structure at 29th Ave and reconstruction of 23rd Ave structures

I-680 Express Lanes



- I-680 SB from Marina Vista to Rudgear
- Environmental phase completed in December 2016
- CCTA has prepared 100% design
- Project expected to advertise for construction later this year and open in 2020

Bay Bridge Forward



- Design progressing on West Grand Ave HOV/Bus Lane and Commuter Parking Initiative
- HOV enforcement pilot is under development
- Casual Carpooling Initiative underway; identifying opportunities for improvements and new pick-up spots; call for projects forthcoming

RM2 Program - Look Forward

- Several major projects opening in 2017 and 2018
- Working with sponsors who have unallocated funds
- Tracking New Starts/Small Starts projects closely

