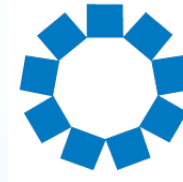


# Interagency Flooding & Sea Level Rise Memorandum of Understanding



**METROPOLITAN  
TRANSPORTATION  
COMMISSION**



**ASSOCIATION  
OF BAY AREA  
GOVERNMENTS**



**BAY AREA AIR QUALITY  
MANAGEMENT DISTRICT**



**MTC Planning Committee  
ABAG Administrative Committee  
June 14, 2024**



# Adaptation Needs

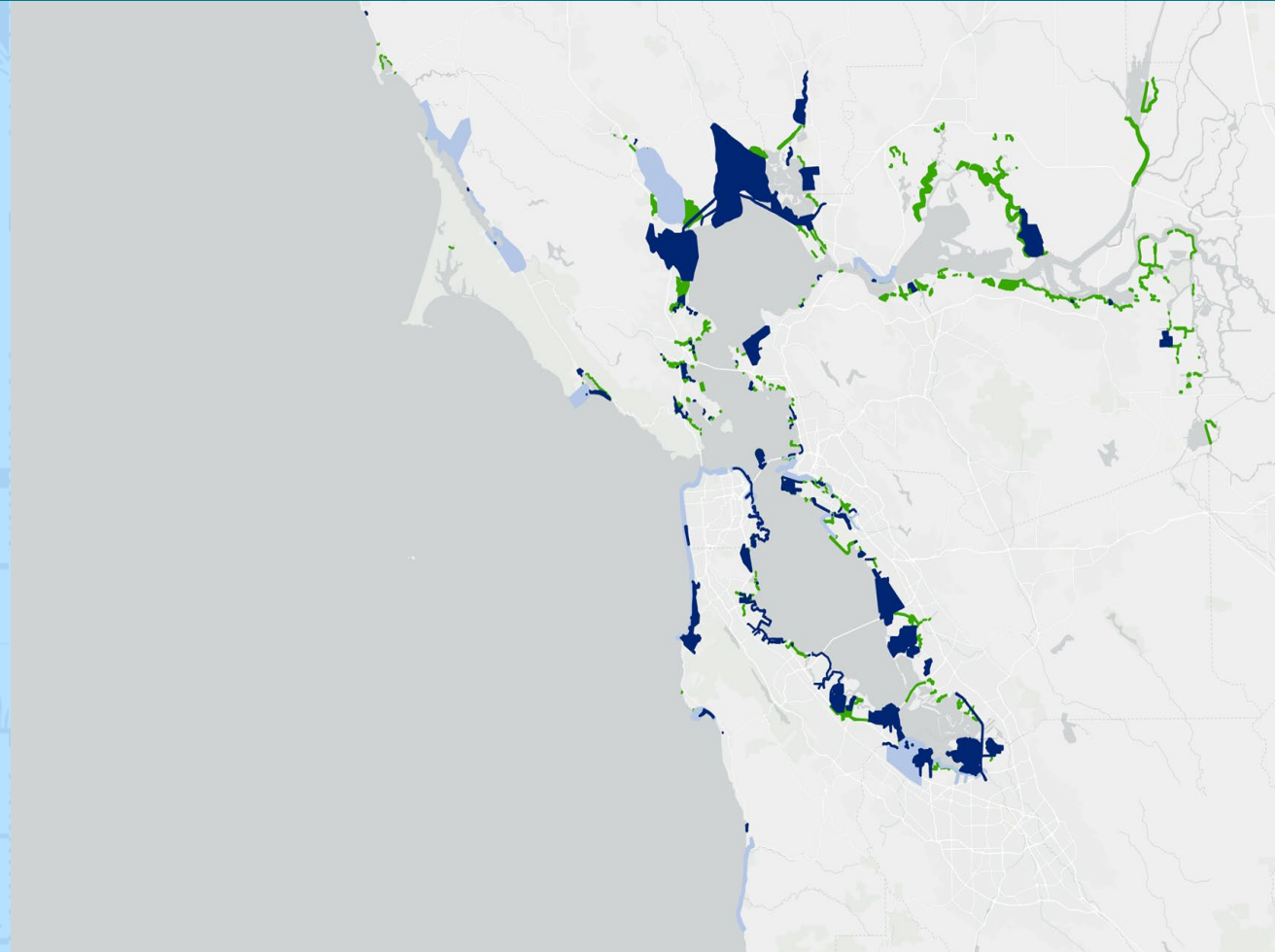
- What is the regional estimate to fund adaptation?

**\$110 billion\***

Estimated cost of sea level rise adaptation through 2050 (in Year of Expenditure dollars)

- What is the regional estimate of inaction?

**\$231 billion**



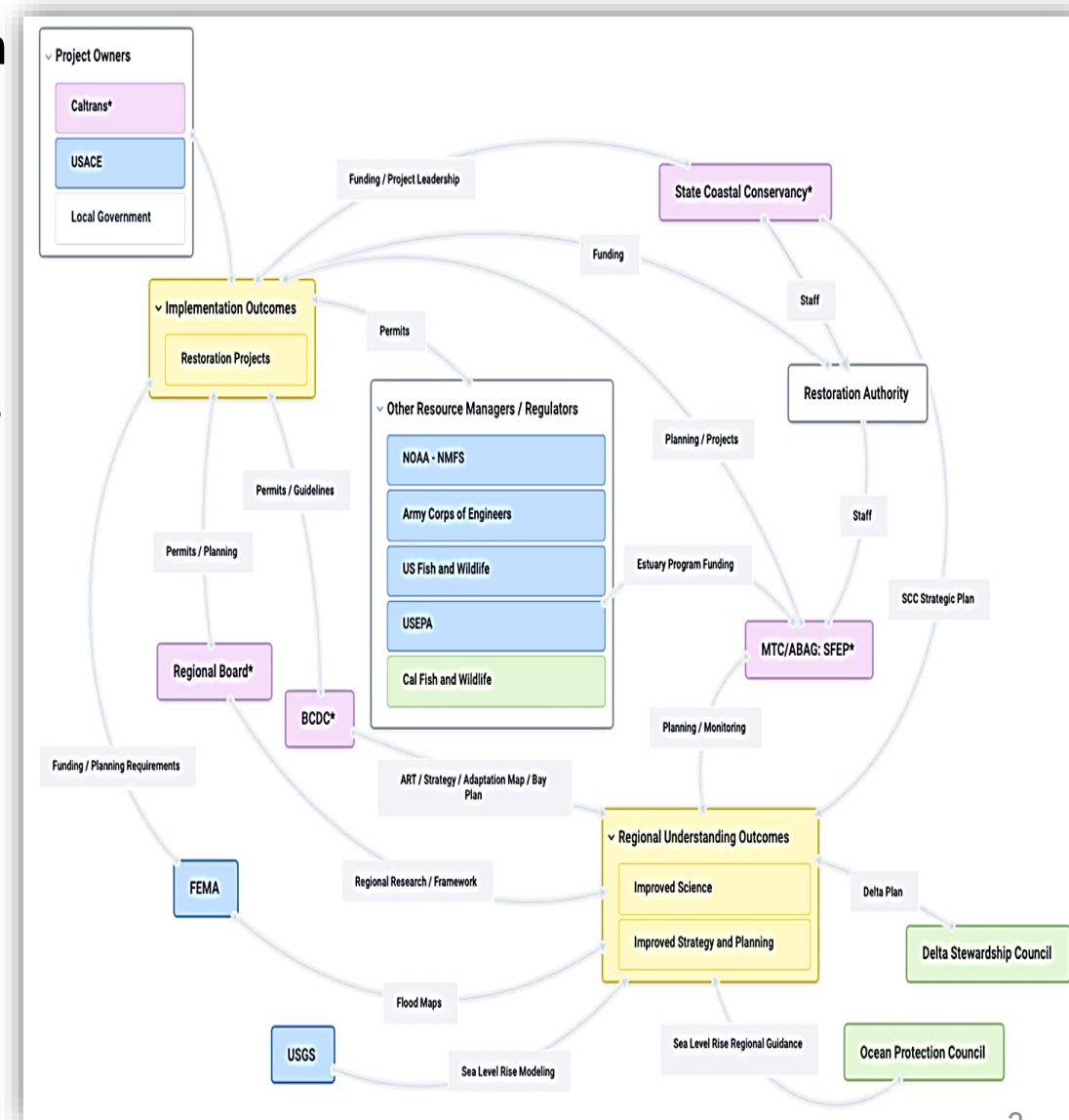
**\*The estimate includes:** Assumed “protect in place” adaptation action for all vulnerable shoreline, including low density areas and agricultural land. Assumed areas vulnerable to up to 4.9 feet of inundation are protected

**The estimate does not include:** Alternative approaches that do *not* protect in place, which could change the cost estimate for adaptation in some shoreline segments. Building code or other local policy adjustments. Riverine and groundwater adaptations. Adaptation plans made by utilities.

# Creating Clarity in Complexity

Wealth of agencies collaborating in an informal system of programs, policies, planning, funding and regulatory activities to support Nature Based Strategies

- No agencies similarly engaged to support grey or hybrid infrastructure where its needed.
- An array of project types along the Bay shoreline are needed to manage sea level rise, from green to grey and hybrid.
- Opportunity to create a regional-scale enabling environment for advancing best projects along the entire shoreline. Planning + Regulatory + Funding
- Greater clarity on roles & responsibilities of different agencies will help position Bay Area for major Federal and State Funding.



# Regional Efforts Have Called Out Need to Identify Fund Manager

## ***Bay Adapt Funding and Governance Action, Task 6.2: Establish a Framework for Funding Plans and Projects***

### **Develop a Revenue Generation and Distribution Plan**

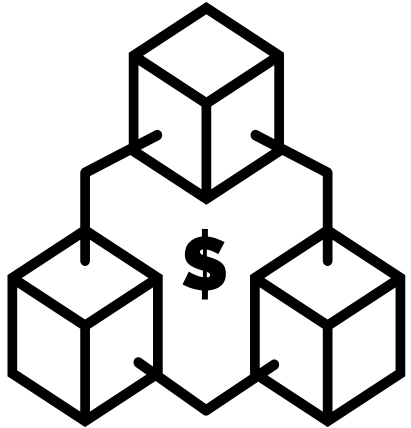
At a regional level, establish or designate a governance structure to develop and implement the Revenue Generation and Distribution Plan and allocate funding. This entity or structure should have the following qualities:

- Technical capabilities to evaluate SLR, planning, environmental, and financial issues
- Regional governance structure (i.e, has reach and representation throughout the 9-county Bay Area)
- Ability to receive, raise, and distribute regional funding

### ***BCDC/MTC/ABAG Sea Level Rise Adaptation Funding & Investment Framework***

#### **Next Step: Better define lead agency roles for SLR funding efforts in the Bay Area**

While tackling SLR requires robust partnerships, the lack of a lead agency to secure additional funding and distribute it equitably hinders the Bay Area's ability to mitigate climate impacts



# Core Functions Outlined in MOU



1. **Planning**: *Preparing for SLR and Flooding Risks*
2. **Fund Management**: *Securing and Awarding Federal, State, and Regional Funding*
3. **Technical Assistance**: *Supporting Project Development and Delivery*
4. **Regulatory Alignment**: *Permitting for Adaptation*
5. **Coordination**: *Collaboration and Decision-making Among Agencies*

Icon credit: TheNounProject, Pixelz Studio

# At A Glance: Organizational Roles and Responsibilities

	ABAG/ SFEP	BAAQMD	BARC	BCDC	Caltrans D4	MTC	SCC	Water Board
Planning								
Fund Management								
Technical Assistance								
Regulatory Alignment								
Coordination								

 **Prime**    
  **Responsible**    
  **Involved**

# Why this matters

**We've never done this before!**

- 1. Introducing a Coordinated Regional Strategy to Fund and Deliver Projects**
- 2. Outlining Roles and Responsibilities Across Functional Areas to Achieve Shared Goal**

# Next Steps

- **May / June:** Review and approval by each agency.
- **July:** BARC Governing Board approval
- **July+:** Work Plan Implementation



# Staff Recommendation

- Authorize the Executive Director to enter into a Memorandum of Understanding among the Metropolitan Transportation Commission; the Association of Bay Area Governments, also host of San Francisco Estuary Partnership; the Bay Area Air Quality Management District; the Bay Area Regional Collaborative; the California State Coastal Conservancy; the California Department of Transportation District 4; the San Francisco Bay Conservation and Development Commission, and the California Regional Water Quality Control Board San Francisco Bay Region to coordinate efforts to address the threats of flooding and sea level rise in the San Francisco Bay Area

**[barc.ca.gov](http://barc.ca.gov)**

**Allison Brooks, Executive Director**  
**[abrooks@bayareametro.gov](mailto:abrooks@bayareametro.gov)**