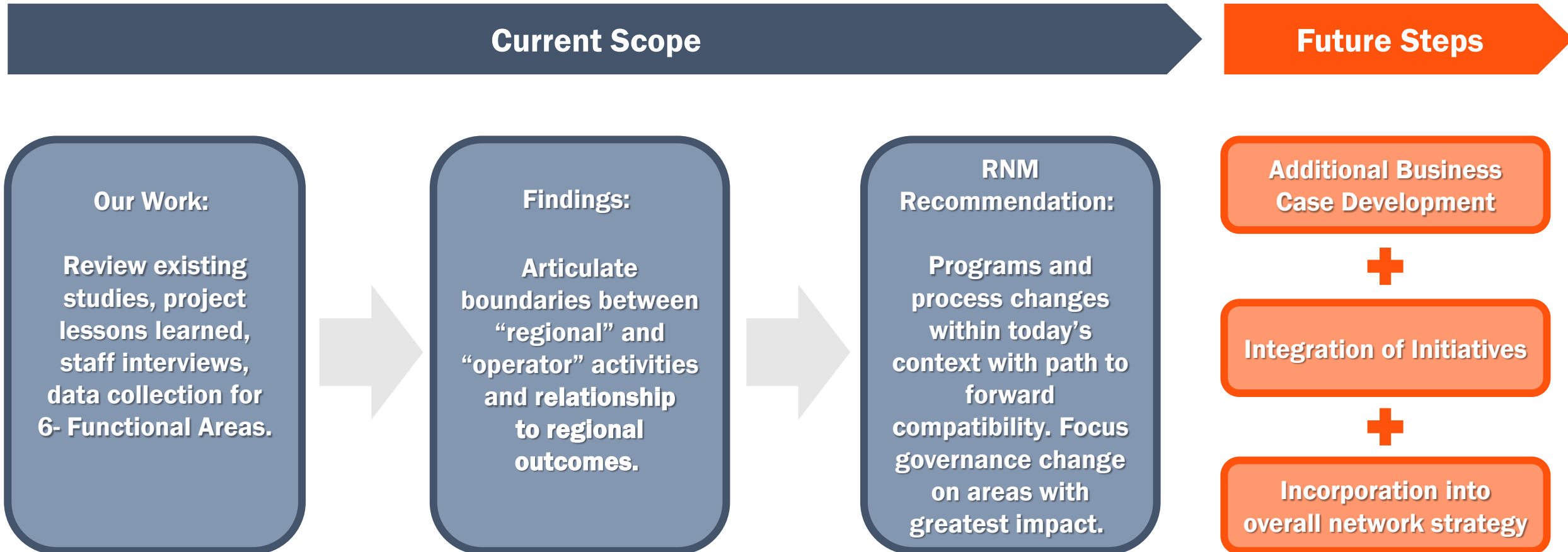




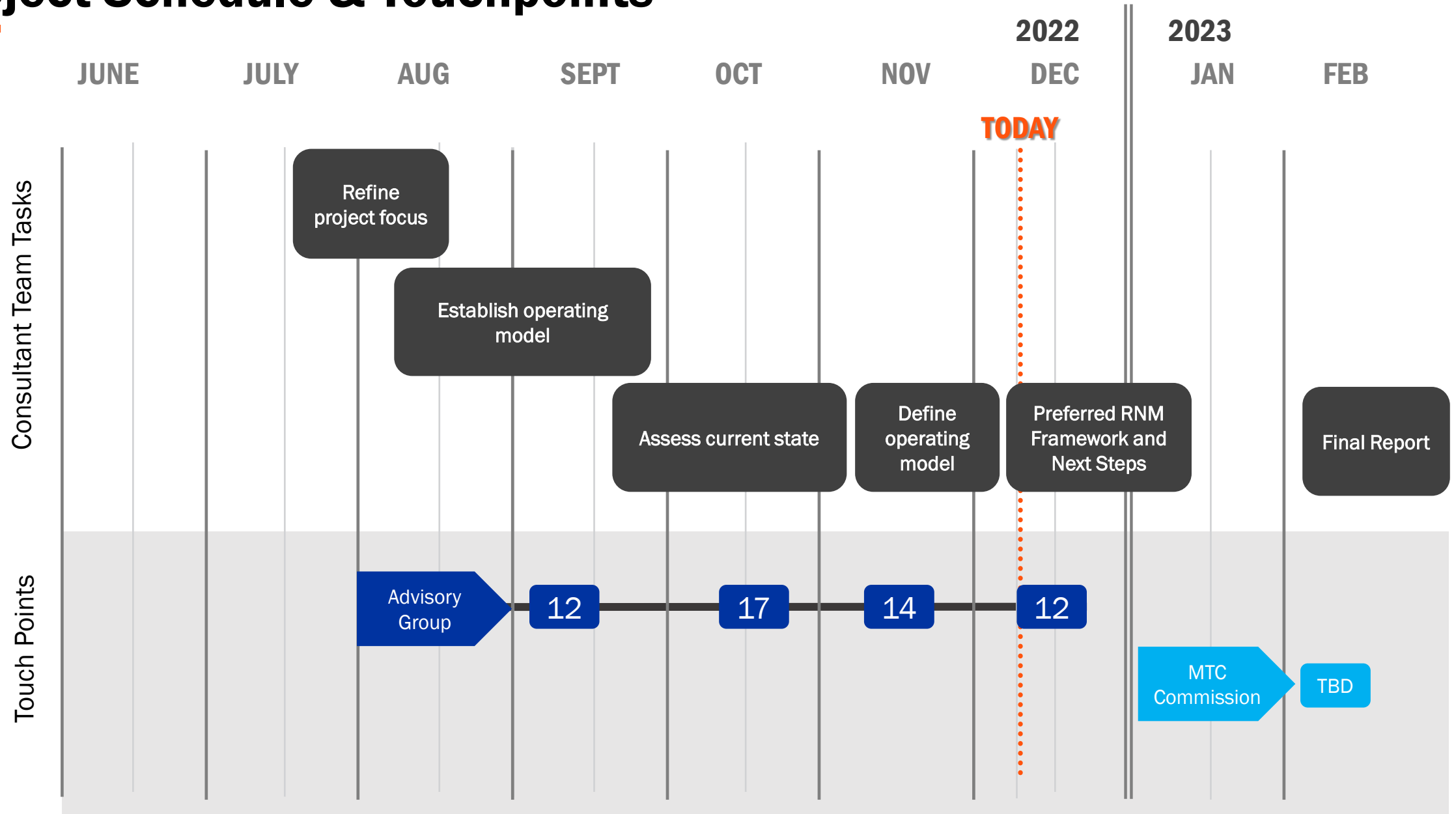
# Network Management

DRAFT PRELIMINARY FINDINGS  
BAY AREA PARTNERSHIP BOARD  
DECEMBER 2, 2022 AGENDA ITEM 4C

# Recap of Scope and Process



# Project Schedule & Touchpoints



# Regionalization for each Functional Area is based on the Regionalization Considerations & Categories:

Will “*regionalizing*” this accountability / responsibility...

## C Improve the Customer Experience

Such as:

- Reduce travel times
- Improve equity
- Simplify the user interface
- Enhance accessibility

and  
/ or

## E Unlock Efficiencies

Such as:

- Enable sharing of costs
- Generate economies of scale
- Reduce time spent on coordination activities
- Reduce duplicative efforts / activities

and

## F Be Feasible

Such as:

- Is not cost prohibitive
- Within achievable legal / regulatory limitations
- Agency has path to authority, where required
- Is operationally possible

# Preliminary Regional Role for Functional Area Activities

Fare Integration Policy

Wayfinding & Mapping

Accessibility

Connected  
Network Planning

Bus Transit Priority

Rail Network Mgmt.

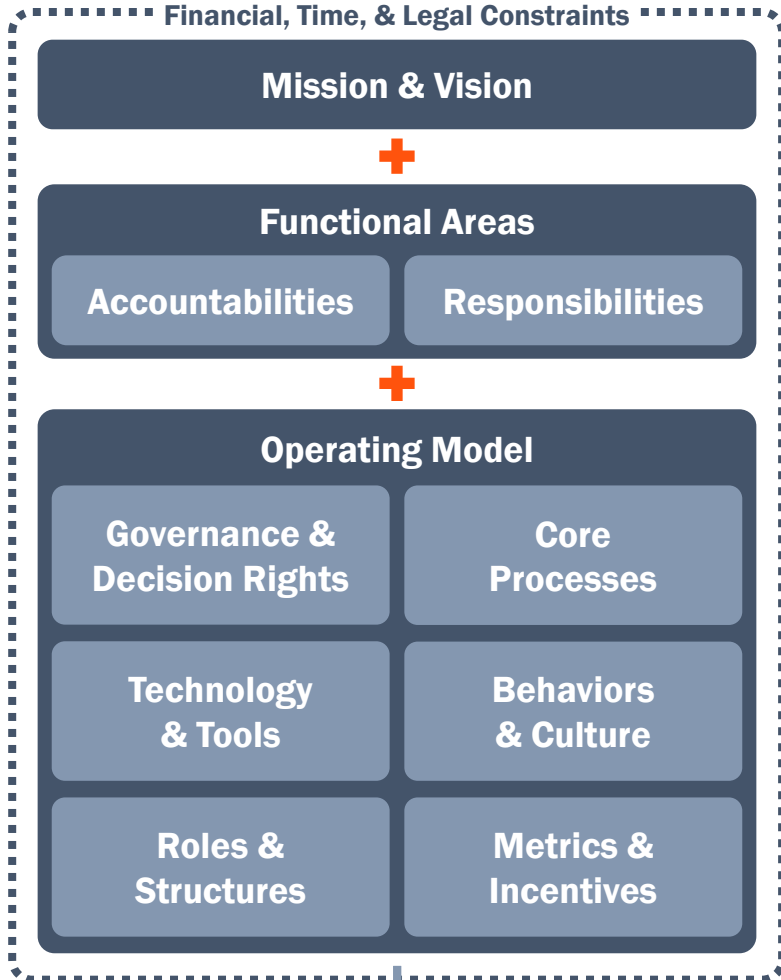
## Key Takeaways

- 1) Regional Role:** Regional entity will set the vision, make select funding decisions, develop the regional policies, create implementation plans, and implement regional programs (as needed) by coordinating stakeholders
- 2) Operator Role:** Operators will be highly involved in regional decision making, provide local stakeholder perspectives / needs, and implement regional policies
- 3) RNM Framework:** RNM Framework will need to be designed to facilitate the effective and efficient interplay of these two roles (see slide 14 for key operating model needs)

# The RNM Framework

The Regional Network Management Framework

Benefits of the RNM Framework



The **mission** (the RNM’s purpose) and **vision** (what the RNM hopes to accomplish) serve as guiding principles for the Functional Areas and Operating Model within the RNM

The **Accountabilities** and **Responsibilities** define what activities within each functional area for which the RNM is responsible (vs. the Operators or MTC)

The **Operating Model** defines *how* the RNM will deliver its Accountabilities and Responsibilities

The **Financial, Time, & Legal Constraints** place boundaries on the Mission, Vision, Functional Areas, and Operating Model for the RNM

# Proposed RNM Mission & Vision Statements

## Proposed Mission Statement

("Core Purpose")

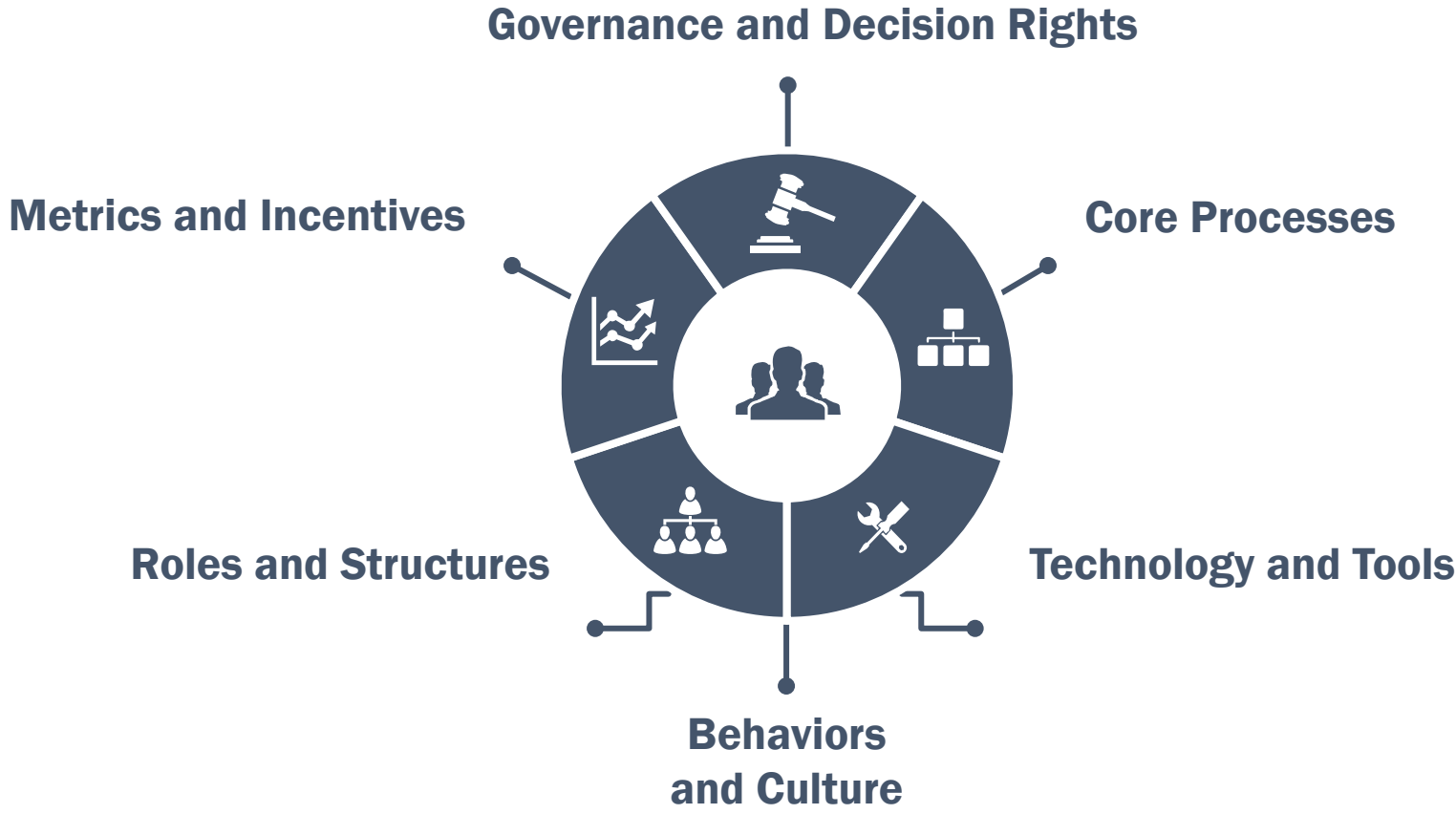
To drive transformative improvements in the customer experience for regional Bay Area transit

## Proposed Vision Statement

("Why")

To advance regional goals in affordability, connectivity, diversity, health, and vibrancy through a unified regional transit system that serves all Bay Area populations

# The current-state assessment revealed cross-cutting challenges for which the RNM Operating Model will be focused to address:





# To address these challenges, the RNM will need three key elements

## Regional Visioning Element

**MTC:** Leverage existing regional purview and planning capabilities to help set the regional vision for transit in the Bay Area and drive the direction of the RNM

## Steering Element

**RNM Executive Board:** Board comprised GM-level Operator and MTC representatives who understand transit operations and can represent the interests of their stakeholders, make critical decisions on regional policies, and provide leadership

**“Voice of the Customer” Advisory Function:** Group of stakeholders who represent the customer and can help inform decision-making with the customer in mind

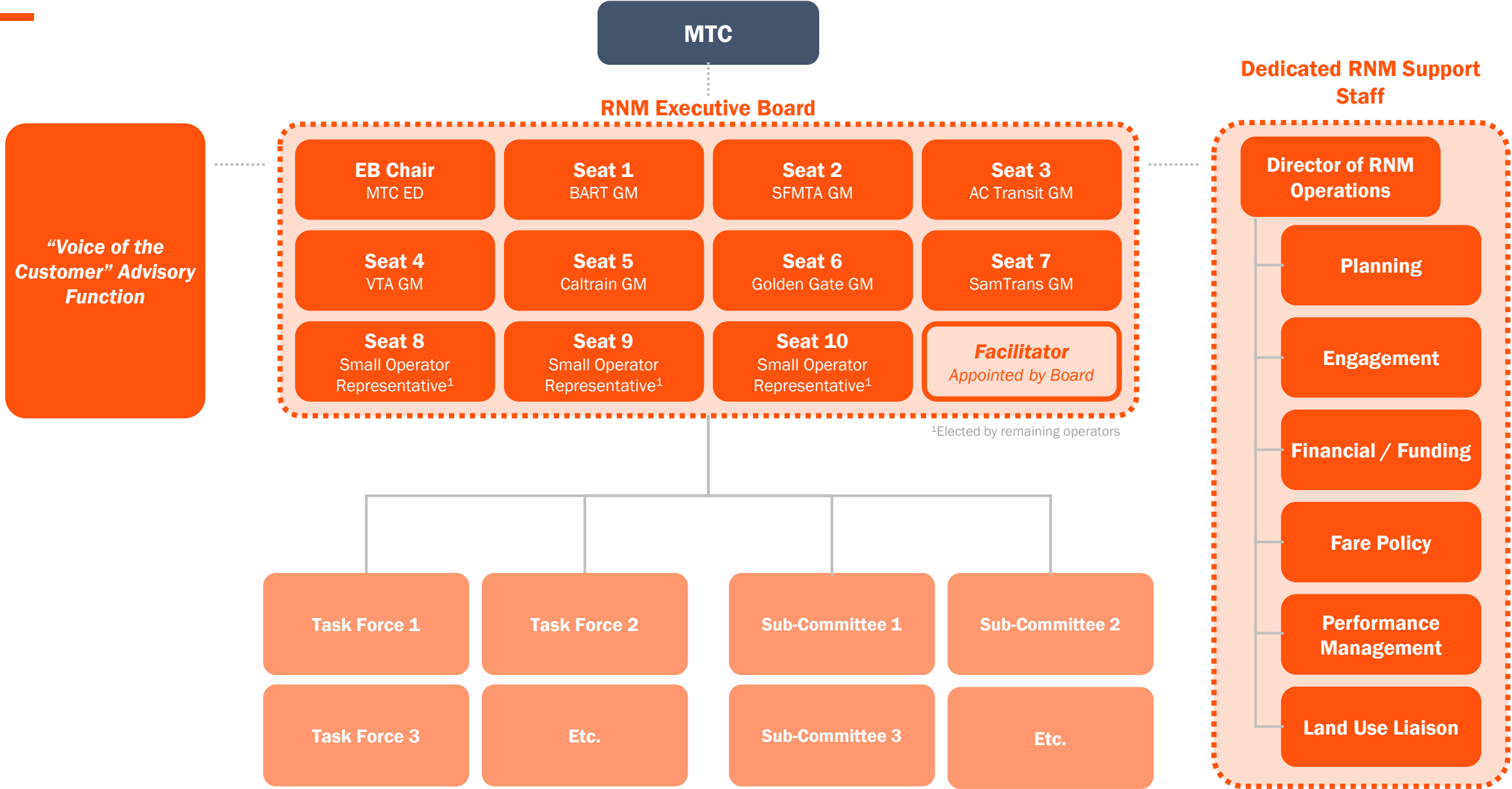
## Administrative / Operational Element

**Dedicated RNM Support Staff:** Group of dedicated staff (potential opportunity for seconded staff as well) with a broad range of capabilities and expertise to support the operations and analysis of the RNM

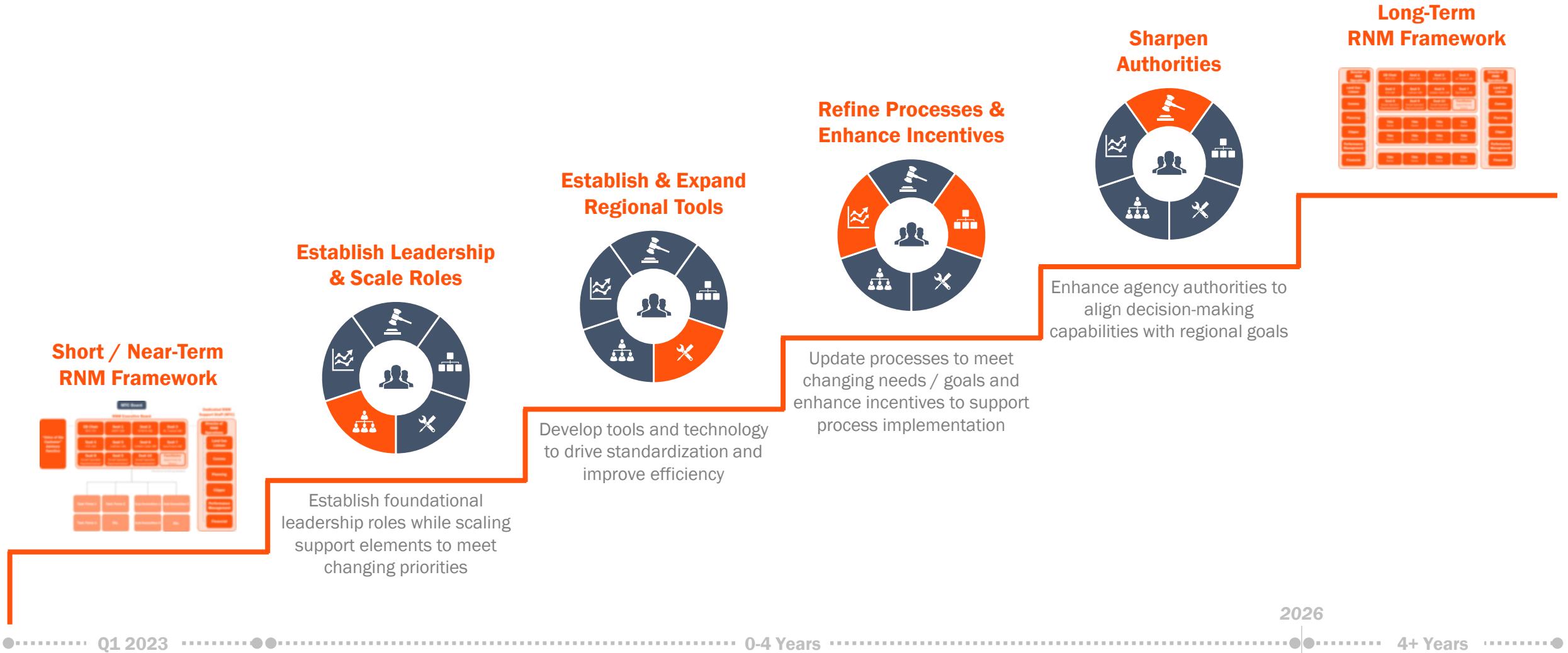
**Task Forces:** *Temporary* groups comprised a broad range of representatives, including Operators, stakeholders, and subject matter experts, that will help complete analysis and develop policy recommendations / options for *targeted* topics

**Sub-Committees:** *Longer-term* groups comprised a broad range of representatives, including Operators, stakeholders, and subject matter experts, that will help complete analysis and develop policy recommendations / options for *ongoing* topics

# Preliminary Short / Near-Term RNM Structure



# How the Operating Model Framework will Drive Long-Term Evolution of the RNM Framework



Note: Illustrative